

1801 Broadway
Suite 500
Denver, Colorado 80202



Callie Fiddes
Regulatory Technician
Tel: 303.398.0550
E-mail: cfiddes@gwogco.com

March 19, 2014

Colorado Oil and Gas Conservation Commission
1120 Lincoln Street, Suite 801
Denver, Colorado 80203

RE: **Proposed Wellbore Spacing Unit**
Kodak North FD 25-039HC

Codell New Drill
Township 6 North, Range 67 West, 6th P.M.
Section 26
Weld County, Colorado

Dear Director:

Great Western Operating Company, LLC is planning to drill the above captioned well in accordance with the provisions of COGCC Rule 318(l)e(2).

Great Western proposed wellbore spacing unit consists of:

- **N2N2 Sec 25, N2NE & NENW Sec 26, S2S2 Sec 24, S2SE & SESW Sec 23**

Great Western Operating Company, LLC respectfully requests that the COGCC review the enclosed map illustrating the proposed wellbore spacing unit.

Respectfully,

Callie Fiddes

Callie Fiddes
Regulatory Technician
Great Western Operating Company, LLC

T6N, R67W, 6th P.M.

GREAT WESTERN OIL & GAS COMPANY

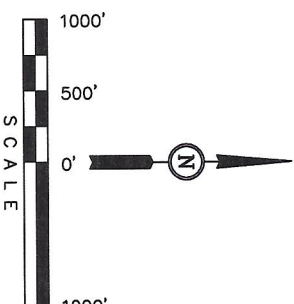
Well location, KODAK NORTH FD 25-039HC, located as shown in the SE 1/4 NW 1/4 of Section 26, T6N, R67W, 6th P.M., Weld County, Colorado.

BASIS OF ELEVATION

USGS COOPERATIVE BASE NETWORK CONTROL STATION, DESIGNATION 'VERMILIEA'. NGS DATA SHEET LISTS THE NAVD 88 ELEVATION AS BEING 5026 FEET

BASIS OF BEARINGS

BASIS OF BEARINGS IS A G.P.S. OBSERVATION.



LINE TABLE		
LINE	DIRECTION	LENGTH
L1	N0517.337E	2011.62

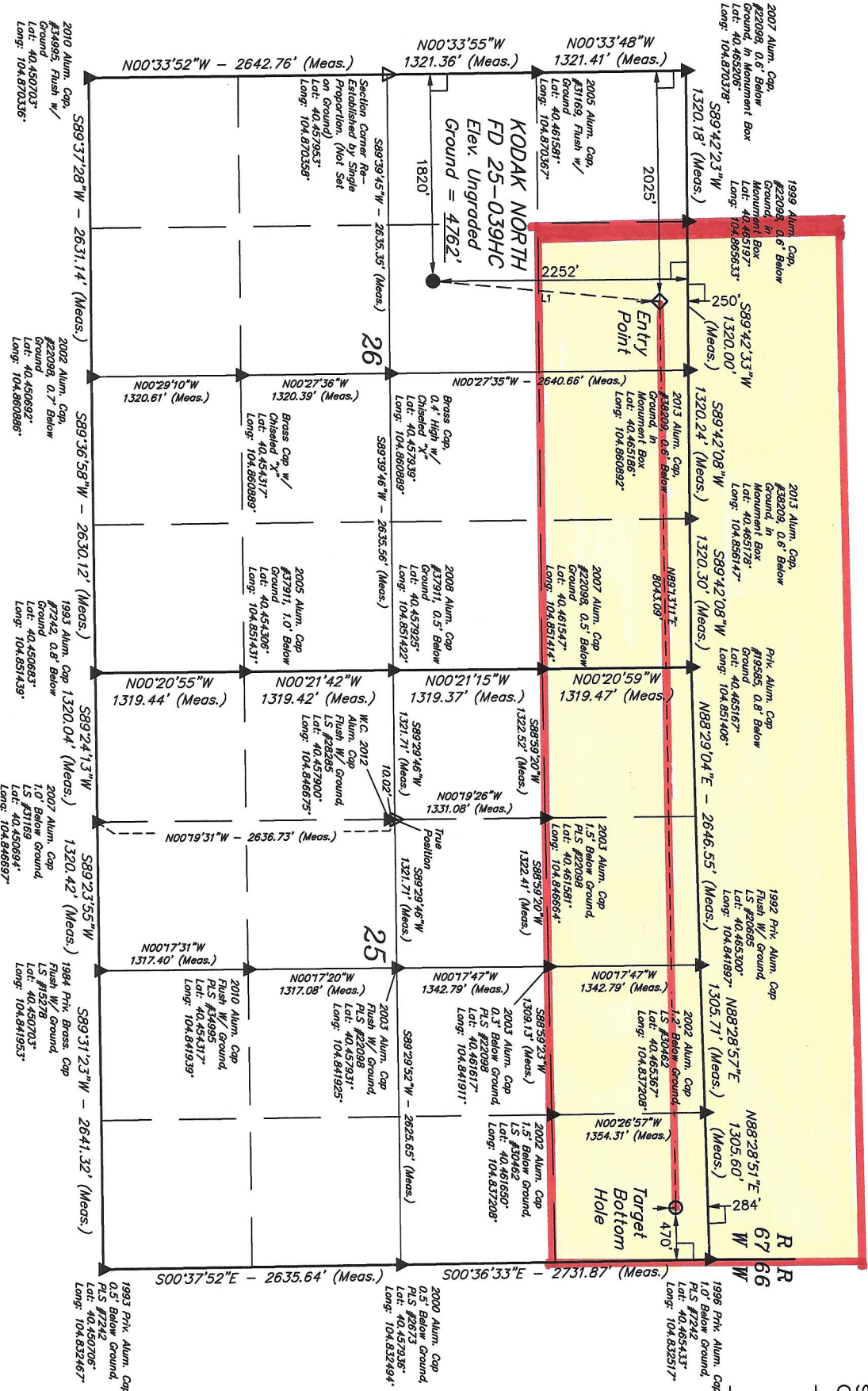
CERTIFICATE

THIS IS TO CERTIFY THAT THE ABOVE PLAT WAS PREPARED FROM FIELD NOTES OF ACTUAL SURVEY MADE BY ME OR UNDER MY SUPERVISION AND THAT THE SAME ARE TRUE AND CORRECT TO THE BEST OF MY KNOWLEDGE AND BELIEF.

REGISTERED LAND SURVEYOR
REGISTRATION NO. 28285
STATE OF COLORADO
WALLAND 13-13

LEGEND:

- = 90° SYMBOL
- = PROPOSED WELL HEAD.
- = TARGET BOTTOM HOLE.
- ◇ = ENTRY POINT.
- = SECTION CORNERS LOCATED.
- △ = SECTION CORNERS RE-ESTABLISHED. (Not Set on Ground.)



UTAH ENGINEERING & LAND SURVEYING
85 SOUTH 200 EAST - VERNAL, UTAH 84078
(435) 789-1017

PDOP = 1.8		SCALE 1" = 1000'		DATE SURVEYED: 10-21-13		DATE DRAWN: 10-30-13	
NAD 83 (TARGET BOTTOM HOLE)		NAD 83 (ENTRY POINT)		NAD 83 (SURFACE LOCATION)		PARTY	
LATITUDE = 40°27'52.67" (40.464631)		LATITUDE = 40°27'52.22" (40.464506)		LATITUDE = 40°27'52.44" (40.459011)		D.N.	
LONGITUDE = 104°50'03.13" (104.834203)		LONGITUDE = 104°51'47.16" (104.863100)		LONGITUDE = 104°51'46.78" (104.863822)		C.M.	
NAD 27 (TARGET BOTTOM HOLE)		NAD 27 (ENTRY POINT)		NAD 27 (SURFACE LOCATION)		G.W.	
LATITUDE = 40°27'52.74" (40.464660)		LATITUDE = 40°27'52.28" (40.464522)		LATITUDE = 40°27'52.51" (40.459031)		J.W.	
LONGITUDE = 104°50'01.24" (104.833672)		LONGITUDE = 104°51'45.26" (104.862572)		LONGITUDE = 104°51'47.86" (104.863294)		REFERENCES	
WEATHER		COOL		FILE		G.L.O. PLAT	
						GREAT WESTERN OIL & GAS COMPANY	