

T6N, R67W, 6th P.M.

GREAT WESTERN OIL & GAS COMPANY

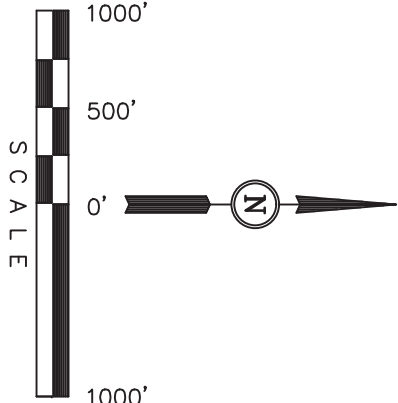
Well location, KODAK NORTH FD 25-039HC, located as shown in the SE 1/4 NW 1/4 of Section 26, T6N, R67W, 6th P.M., Weld County, Colorado.

BASIS OF ELEVATION

USGS COOPERATIVE BASE NETWORK CONTROL STATION, DESIGNATION "VERMILYEA". NGS DATA SHEET LISTS THE NAVD 88 ELEVATION AS BEING 5026 FEET

BASIS OF BEARINGS

BASIS OF BEARINGS IS A G.P.S. OBSERVATION.



LINE TABLE		
LINE	DIRECTION	LENGTH
L1	N05°17'33"E	2011.62'

CERTIFICATE OF RECORD REGISTRATION

THIS IS TO CERTIFY THAT THE ABOVE PLAT WAS PREPARED FROM FIELD NOTES OF ACTUAL SURVEY MADE BY ME OR UNDER MY SUPERVISION AND THAT THE SAME ARE TRUE AND CORRECT TO THE BEST OF MY KNOWLEDGE AND BELIEF.

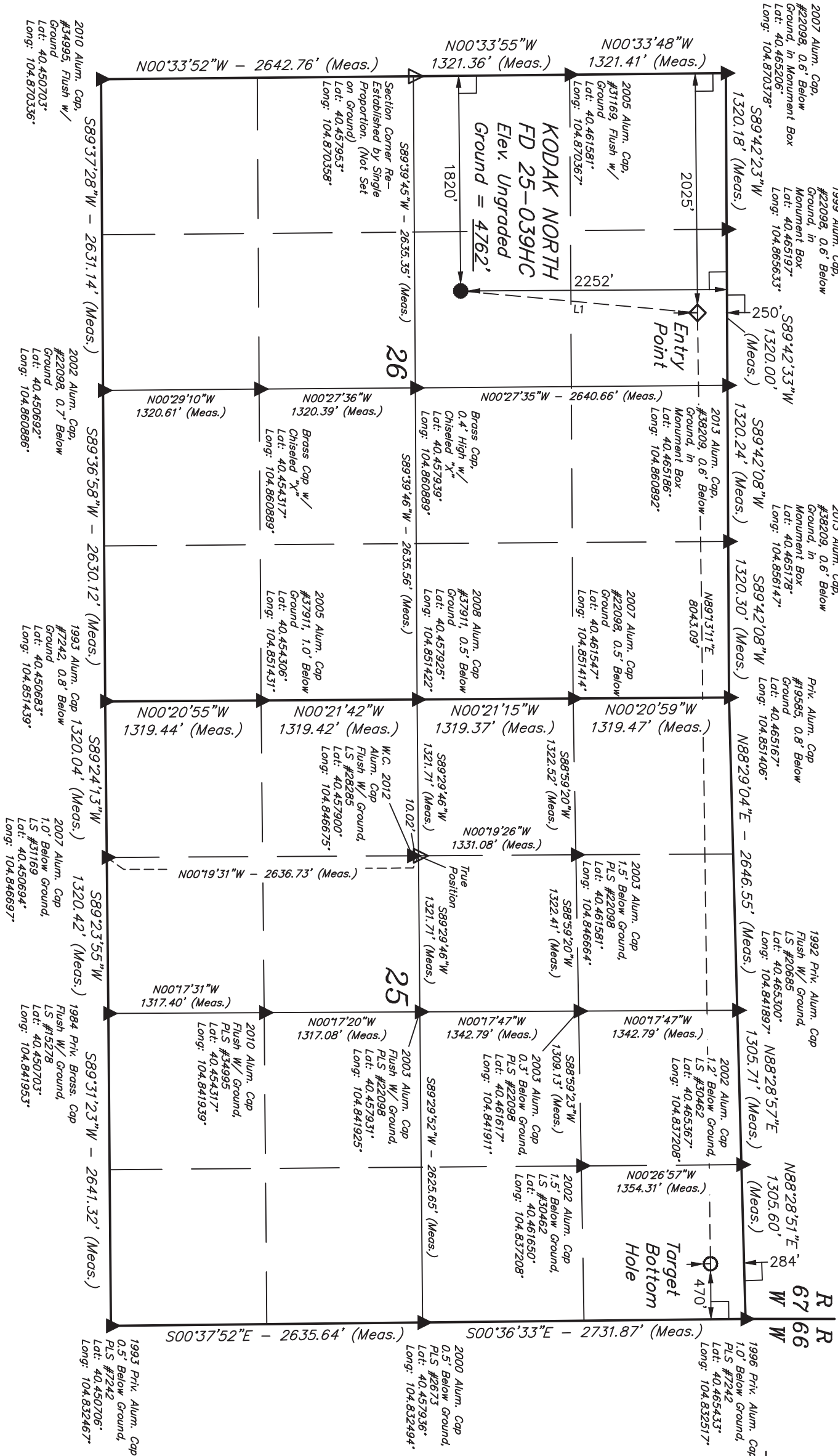


UNTAH ENGINEERING & LAND SURVEYING

85 SOUTH 200 EAST - VERNAL, UTAH 84078

(435) 789-1017

SCALE 1" = 1000'		DATE SURVEYED: 10-21-13	DATE DRAWN: 10-30-13
PARTY D.N. C.M. G.W. J.W.	REFERENCES G.L.O. PLAT		
WEATHER COOL	FILE GREAT WESTERN OIL & GAS COMPANY		



LEGEND:

- 90° SYMBOL
- PROPOSED WELL HEAD.
- TARGET BOTTOM HOLE.
- ENTRY POINT.
- SECTION CORNERS LOCATED.
- SECTION CORNERS RE-ESTABLISHED. (Not Set on Ground.)