

GREAT WESTERN OIL & GAS COMPANY

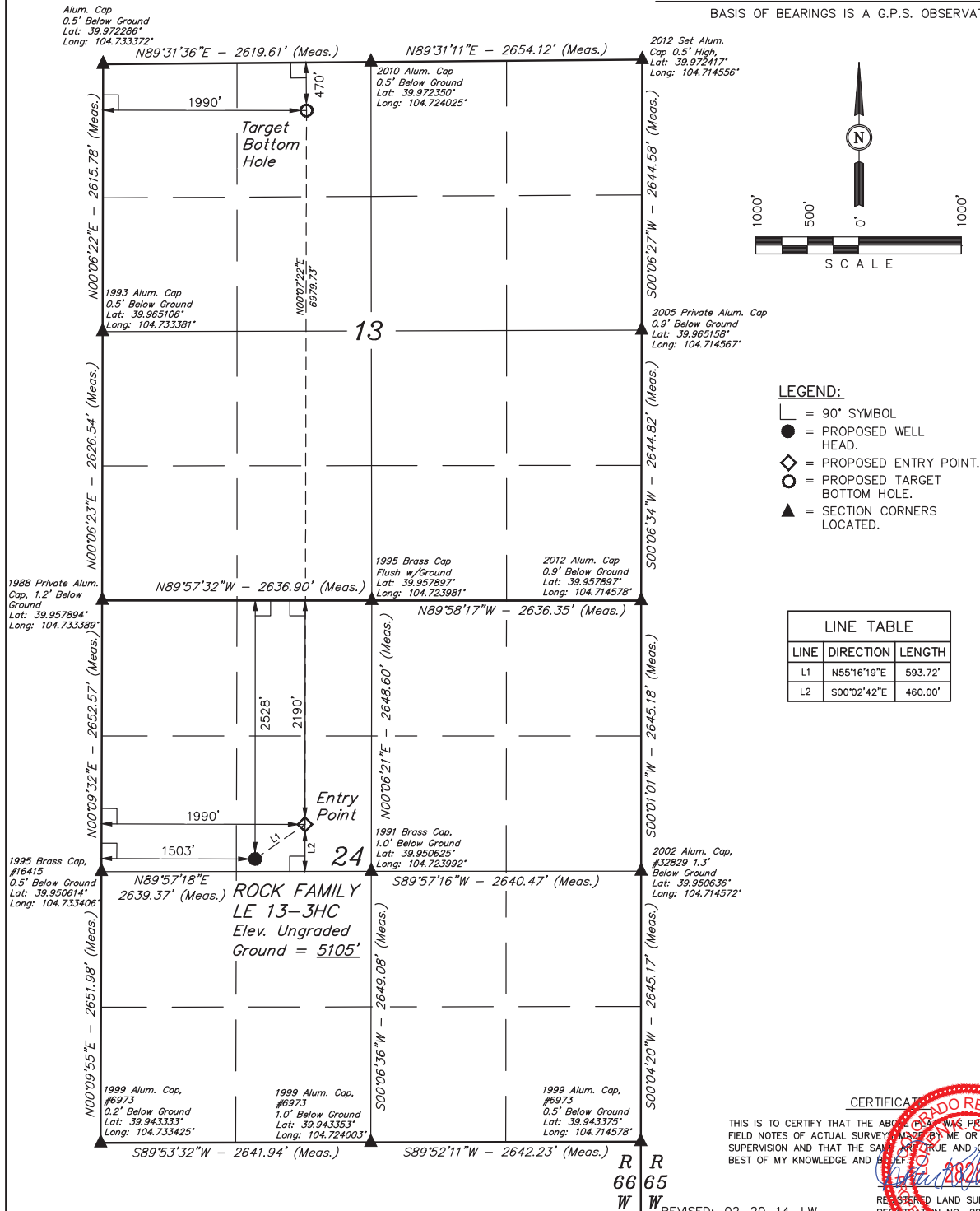
Well location, ROCK FAMILY LE 13-3HC, located as shown in the SE 1/4 NW 1/4 of Section 24, T1S, R66W, 6th. P.M., Adams County, Colorado.

BASIS OF ELEVATION

HUBBS TRIANGULATION STATION LOCATED IN THE NE 1/4 OF SECTION 21, T1N, R64W, 6th. P.M., TAKEN FROM THE KEENESBURG, QUADRANGLE, COLORADO, WELD COUNTY, 7.5 MINUTE QUAD (TOPOGRAPHIC MAP) PUBLISHED BY THE UNITED STATES DEPARTMENT OF THE INTERIOR, GEOLOGICAL SURVEY. SAID ELEVATION IS MARKED AS BEING 5168 FEET.

BASIS OF BEARINGS

BASIS OF BEARINGS IS A G.P.S. OBSERVATION.



CERTIFICATE

THIS IS TO CERTIFY THAT THE ABOVE PLAT WAS PREPARED FROM
FIELD NOTES OF ACTUAL SURVEY, MADE BY ME OR UNDER MY
SUPERVISION AND THAT THE SAME ARE TRUE AND CORRECT TO THE
BEST OF MY KNOWLEDGE AND BELIEF.

REGISTERED LAND SURVEYOR
REGISTRATION NO. 28285
STATE OF COLORADO
19-20-14

REVISED: 02-20-14 J.W.
REVISED: 02-11-14 J.W.
REVISED: 12-10-13 H.K.W.

UINTAH ENGINEERING & LAND SURVEYING
85 SOUTH 200 EAST - VERNAL, UTAH 84078
(435) 789-1017

PDOP = 1.7

SCALE
1" = 1000'

DATE SURVEYED: 09-05-12	DATE DRAWN: 09-10-12
----------------------------	-------------------------

09-03-12	REFERENCES
	G.L.O. PLAT

PARTY			
DALLAS NIELSEN	G.W.	J.W.	

WEATHER	
---------	--

FILE	GREAT WESTERN OIL & GAS COMPANY
------	------------------------------------

NAD 83 (TARGET BOTTOM HOLE)	NAD 83 (ENTRY POINT)	NAD 83 (SURFACE LOCATION)
LATITUDE = 39°58'15.78" (39.971044)	LATITUDE = 39°57'06.79" (39.951886)	LATITUDE = 39°57'05.70" (39.950956)
LONGITUDE = 104°44'38.58" (104.726272)	LONGITUDE = 104°43'37.70" (104.726306)	LONGITUDE = 104°43'40.96" (104.728044)
NAD 27 (TARGET BOTTOM HOLE)	NAD 27 (ENTRY POINT)	NAD 27 (SURFACE LOCATION)
LATITUDE = 39°58'15.82" (39.971061)	LATITUDE = 39°57'06.84" (39.951900)	LATITUDE = 39°57'05.50" (39.950972)
LONGITUDE = 104°43'32.69" (104.725747)	LONGITUDE = 104°43'32.81" (104.725781)	LONGITUDE = 104°43'39.07" (104.725919)