

PROPOSED LOCATION:
 ROCK FAMILY LE 13-021HN,
 13-4HN, 13-4HC, 13-29HN,
 13-3HN, 13-3HC & 13-28HN-1

T1S
T2S

R
66
W

R
65
W

LEGEND:

● PROPOSED LOCATION

GREAT WESTERN OIL & GAS COMPANY

ROCK FAMILY LE 13-021HN, 13-4HN, 13-4HC, 13-29HN,
 13-3HN, 13-3HC & 13-28HN-1
 SECTION 24, T1S, R66W, 6th P.M.
 S 1/2 NW 1/4



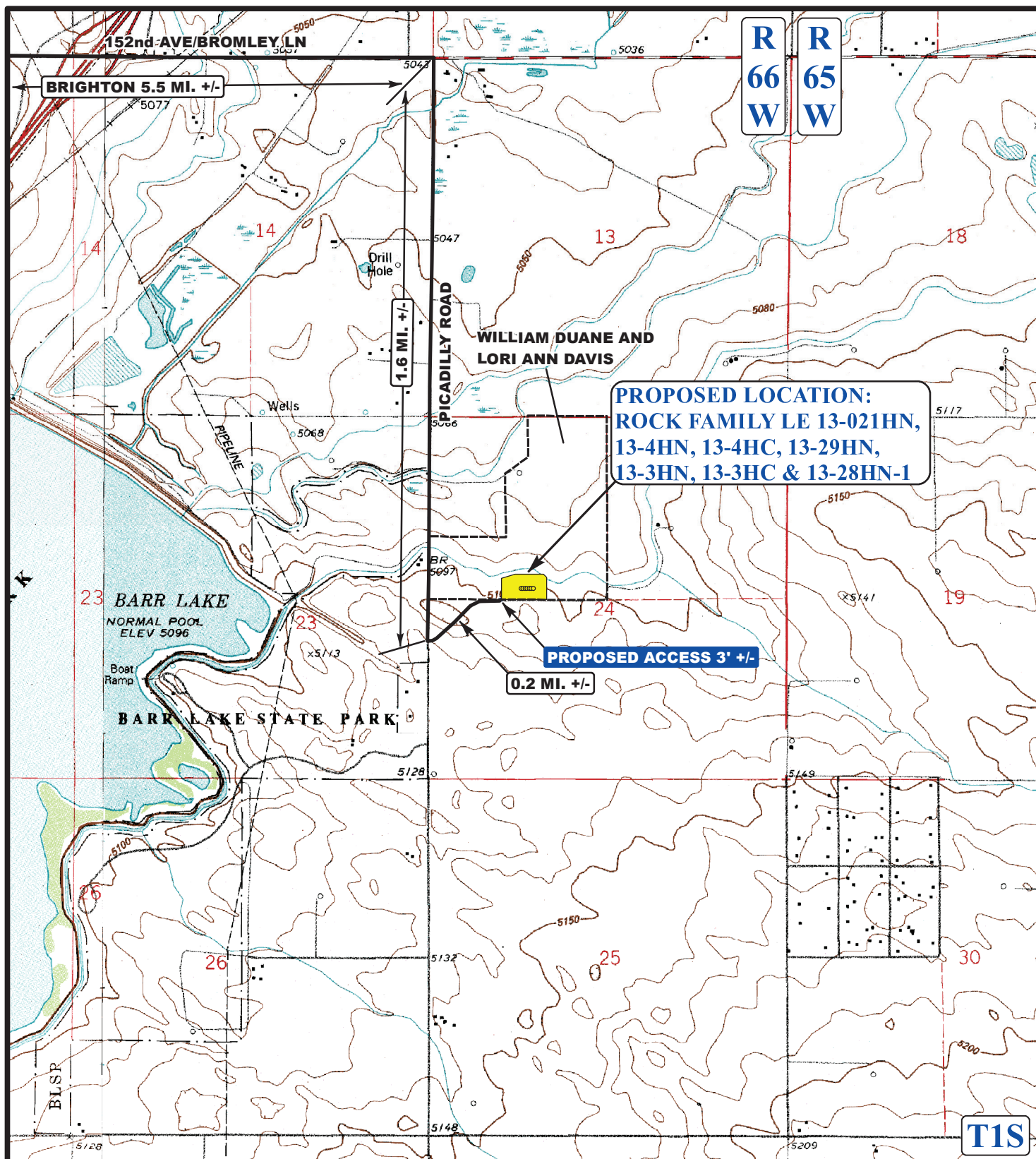
Utah Engineering & Land Surveying
 85 South 200 East Vernal, Utah 84078
 (435) 789-1017 * FAX (435) 789-1813

ACCESS ROAD
MAP

09 **11** **12**
 MONTH DAY YEAR

SCALE: 1:100,000 DRAWN BY: M.M. REV: 12-16-13 J.L.G.





LEGEND:

- EXISTING ROADS
- PROPOSED ACCESS ROAD

GREAT WESTERN OIL & GAS COMPANY

ROCK FAMILY LE 13-021HN, 13-4HN, 13-4HC, 13-29HN, 13-3HN, 13-3HC & 13-28HN-1
SECTION 24, T1S, R66W, 6th P.M.
S 1/2 NW 1/4



Utah Engineering & Land Surveying
85 South 200 East Vernal, Utah 84078
(435) 789-1017 * FAX (435) 789-1813



ACCESS ROAD MAP

09 **11** **12**
MONTH DAY YEAR

SCALE: 1"=2000' DRAWN BY: M.M. REV: 02-22-14 J.L.G.

