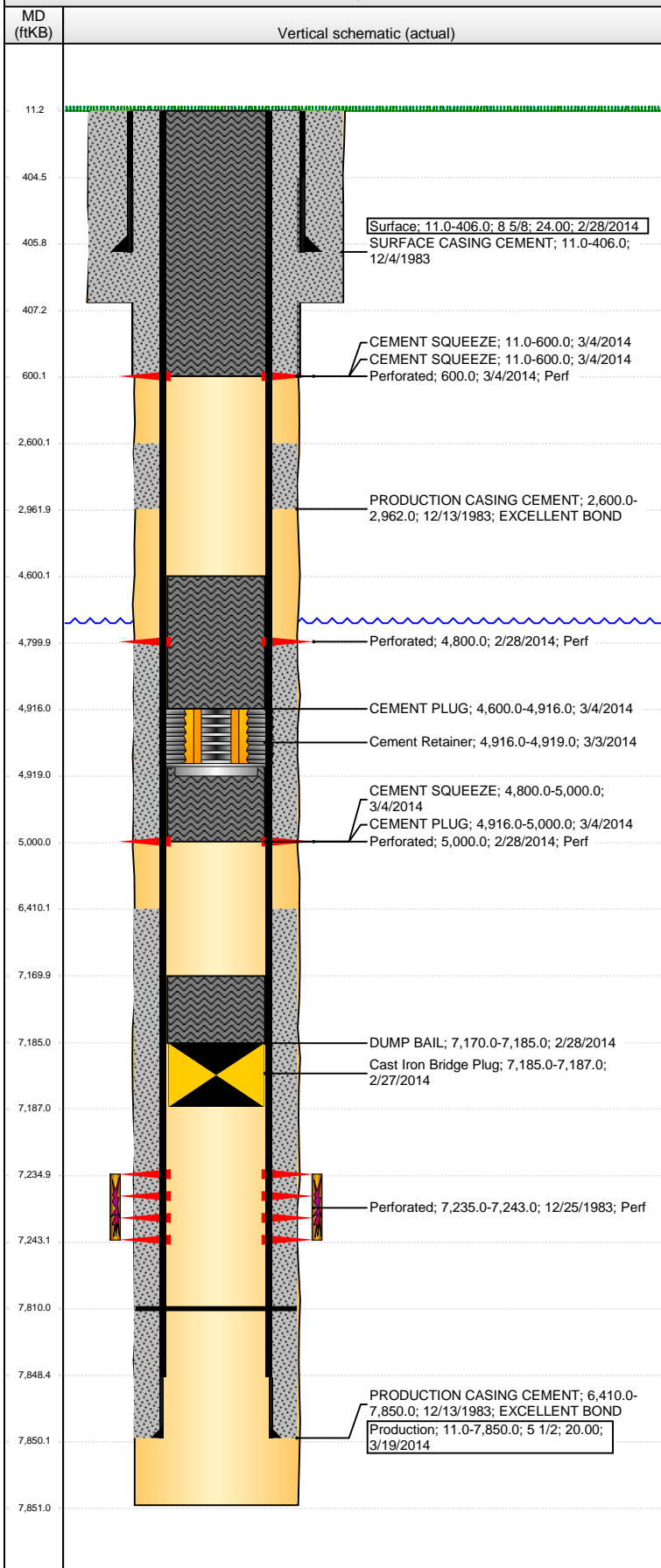


**Well Name: STEPHENS 1**

VERTICAL - ORIGINAL HOLE, 3/25/2014 10:28:25 AM



## Well Header

API 05-123-11552	Business Unit WATTENBERG	District 15	Well Config VERTICAL
Original KB Elevation (ft) 4,743.00	KB - GL / MSL (ftKB) 11.00	Spud Date 12/4/1983	P & A Date 3/4/2014

## Comment

THIS IS AN HOMESTEAD OIL, INC. WELL THAT WAS P&A'D BY NOBLE.

## Directions To Well

WCRs 31 & 44, NORTH 0.5 MILE, EAST (ON SOUTH SIDE OF FARMHOUSE) 0.2 MILE AND NORTH 0.2 MILE INTO.

## Congressional Location

Quarter 1	Quarter 2	Quarter 3	Quarter 4	Section	Township	Twnshp N...	Range	Rng E/W Dir
		SW	NW	15	4	N	66	W

## Bottom Hole Location

North-South Distance (ft)	From N or S Line	East-West Distance (ft)	From E or W Line

## Plug Back Total Depths

Date	Depth (ftKB)	Method	Com
1/17/1984	7,810.0		PBTD ON STATE REPORTS

## Wellbore Sections

Section Des	Size (in)	Act Top, MD (ftKB)	Act Btm, MD (ftKB)
SURFACE	12 1/4	11.0	407.0
PRODUCTION	7 7/8	407.0	7,851.0

## Zone Statuses

Zone Name	Status Date	Status	Job
CODELL	1/13/1984	PR	DRILLING/COMPLETION - ORIGINAL, 12/4/1983 00:00
CODELL	2/28/2014	P&A	ABANDON WELL, 2/22/2014 09:00

## Casing Strings

### Surface, 406.0ftKB

Casing Description	Run Date	OD (in)	Wt/Len (l...)	Grade	Top, MD (ft...)	MD (ftKB)
Surface	2/28/2014	8 5/8	24.00		11.0	406.0

### Production, 7,850.0ftKB

Casing Description	Run Date	OD (in)	Wt/Len (l...)	Grade	Top, MD (ft...)	MD (ftKB)
Production	3/19/2014	5 1/2	20.00		11.0	7,850.0

## Cement

Description	Top Depth (ftKB)	Bottom Depth (ftKB)
SURFACE CASING CEMENT	11.0	406.0
PRODUCTION CASING CEMENT	2,600.0	2,962.0
PRODUCTION CASING CEMENT	6,410.0	7,850.0
DUMP BAIL	7,170.0	7,185.0
CEMENT PLUG	4,916.0	5,000.0
CEMENT SQUEEZE	4,800.0	5,000.0
CEMENT PLUG	4,600.0	4,916.0
CEMENT SQUEEZE	11.0	600.0
CEMENT SQUEEZE	11.0	600.0

## Tubing Components

Item Des	OD (in)	Wt (lb/ft)	Grade	Jts	Len (ft)	Btm (ftKB)	Btm (TVD) (ftKB)

## Perforation Data

Zone	Bnch/St g	Entered Shot Total	Top (ftKB)	Btm (ftKB)	Date
		4	600.00	600.00	3/4/2014
		1	4,800.00	4,800.00	2/28/2014
		2	5,000.00	5,000.00	2/28/2014
CODELL, ORIGINAL HOLE			7,235.00	7,243.00	12/25/1983

## Stimulations & Treatments

Date	Zone	Primary Job Type
12/29/1983	CODELL, ORIGINAL HOLE	DRILLING/COMPLETION - ORIGINAL
Technical Result	Tech Result Details	Tech Result Note

## Comment

**Well Name: STEPHENS 1**

VERTICAL - ORIGINAL HOLE, 3/25/2014 10:28:28 AM

## Other In Hole

Run Date	Des	OD (in)	Top (ftKB)	Btm (ftKB)
2/27/2014	Cast Iron Bridge Plug	4.64	7,185.0	7,187.0
3/3/2014	Cement Retainer	4.64	4,916.0	4,919.0

## Logs

Date	Type	Top, MD (ftKB)	Btm, MD (ftKB)
2/26/2014	GYRO	0.0	6,750.0
2/28/2014	CEMENT BOND	0.0	7,180.0

