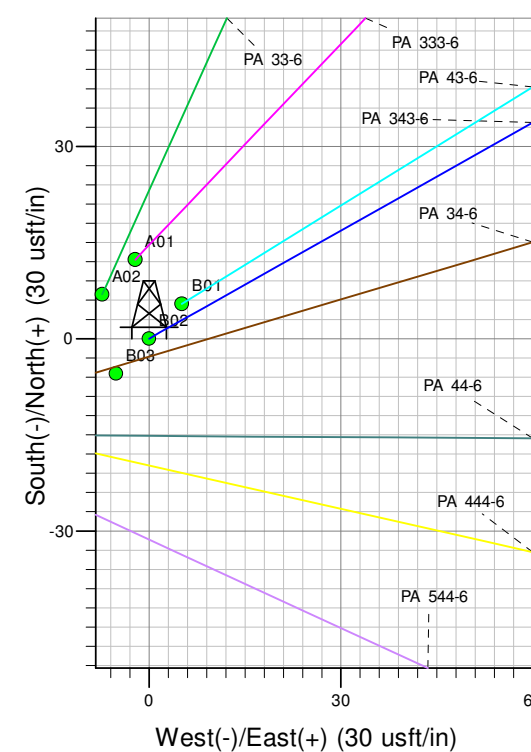
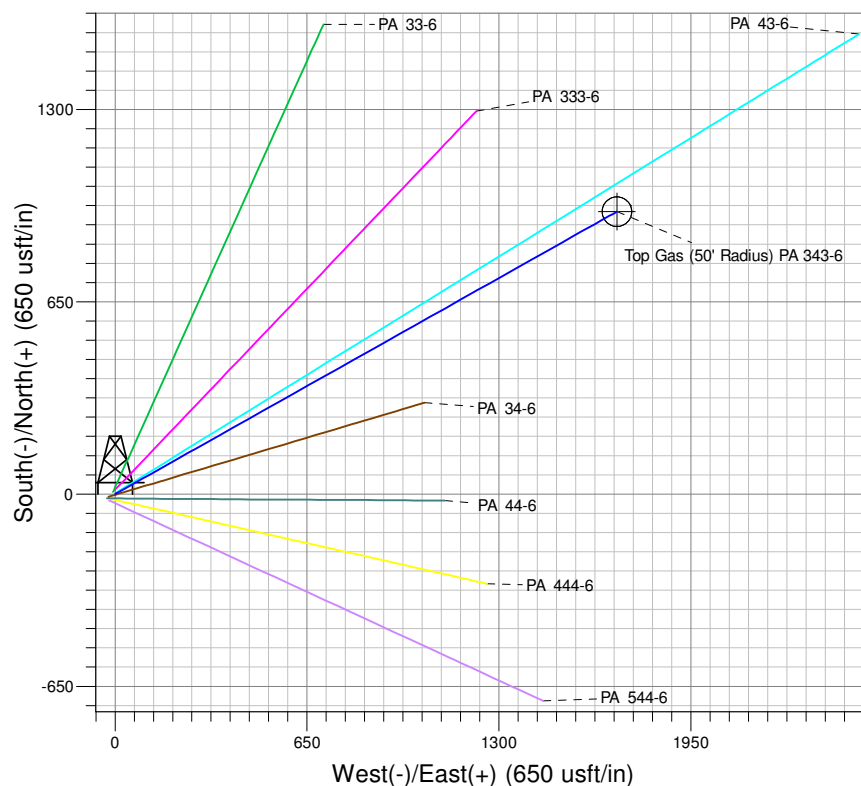
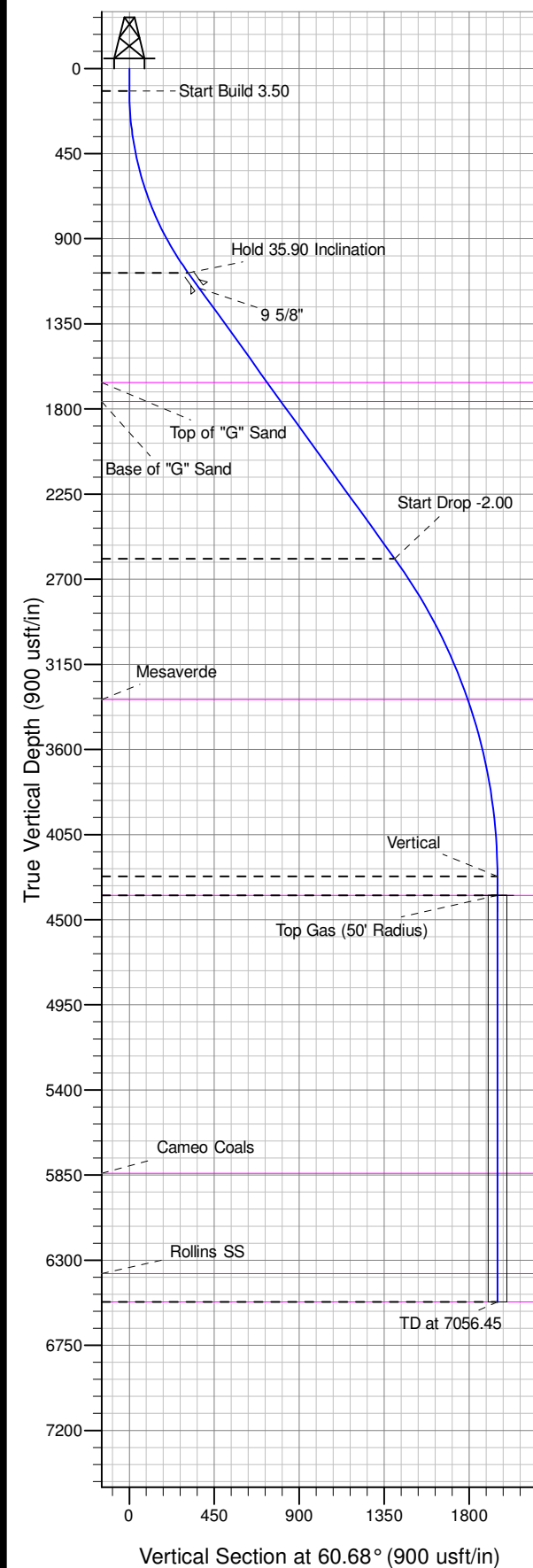




Well Name: PA 343-6
Surface Location: PA 24-6 Pad
North American Datum 1983 , US State Plane 1983 , Colorado Central Zone
Ground Elevation: 5135.00

+N/-S	+E/-W	Northing	Easting	Latitude	Longitude	Slot
0.00	0.00	1603194.60	2282590.40	39.46199	-108.04130	B02

KELLY BUSHING @ 5160.00usft (Aztec 1000 (25' RKB) kjs)



Project: PA 06-07S-095W
Site: PA 24-6 Pad
Well: PA 343-6
Design #4 26Feb14 kjs



Azimuths to True North
Magnetic North: 10.19°

Magnetic Field
Strength: 52088.0snT
Dip Angle: 65.66°
Date: 11/19/2012
Model: IGRF2010

ANNOTATIONS

TVD	MD	Inc	Azi	+N/-S	+E/-W	Vsect	Departure	Annotation
120.00	120.00	0.00	0.00	0.00	0.00	0.00	0.00	Start Build 3.50
1079.98	1145.81	35.90	60.68	152.31	271.18	311.02	311.02	Hold 35.90 Inclination
2591.04	3011.29	35.90	60.68	688.01	1224.98	1404.97	1404.97	Start Drop -2.00
4271.00	4806.45	0.00	0.00	954.55	1699.54	1949.26	1949.26	Vertical
4371.00	4906.45	0.00	0.00	954.55	1699.54	1949.26	1949.26	Top Gas
6521.00	7056.45	0.00	0.00	954.55	1699.54	1949.26	1949.26	TD at 7056.45

PICEANCE VLY NAD 83

PA 06-07S-095W

PA 24-6 Pad

PA 343-6 - Slot B02

Wellbore #1

Plan: Design #4 26Feb14 kjs

Standard Planning Report - Geographic

13 March, 2014

WPX
Planning Report - Geographic

Database:	COMPASS-PICEANCE	Local Co-ordinate Reference:	Well PA 343-6 - Slot B02
Company:	PICEANCE VLY NAD 83	TVD Reference:	KELLY BUSHING @ 5160.00usft (Aztec 1000 (25' RKB) kjs)
Project:	PA 06-07S-095W	MD Reference:	KELLY BUSHING @ 5160.00usft (Aztec 1000 (25' RKB) kjs)
Site:	PA 24-6 Pad	North Reference:	True
Well:	PA 343-6	Survey Calculation Method:	Minimum Curvature
Wellbore:	Wellbore #1		
Design:	Design #4 26Feb14 kjs		

Project	PA 06-07S-095W, Garfield County, CO, 06-07S-095W		
Map System:	US State Plane 1983	System Datum:	Mean Sea Level
Geo Datum:	North American Datum 1983		
Map Zone:	Colorado Central Zone		Using geodetic scale factor

Site	PA 24-6 Pad			
Site Position:		Northing:	1,603,207.00 usft	Latitude: 39.46203
From: Map		Easting:	2,282,588.60 usft	Longitude: -108.04131
Position Uncertainty:	0.00 usft	Slot Radius:	13.200 in	Grid Convergence: -1.603 °

Well	PA 343-6 - Slot B02			
Well Position	+N/-S	0.00 usft	Northing:	1,603,194.60 usft
	+E/-W	0.00 usft	Easting:	2,282,590.40 usft
Position Uncertainty	0.00 usft		Wellhead Elevation:	
			Ground Level:	5,135.00 usft

Wellbore	Wellbore #1				
Magnetics	Model Name	Sample Date	Declination (°)	Dip Angle (°)	Field Strength (nT)
	IGRF2010	11/19/2012	10.185	65.664	52,088

Design	Design #4 26Feb14 kjs			
Audit Notes:				
Version:	Phase:	PLAN	Tie On Depth:	0.00
Vertical Section:	Depth From (TVD) (usft)	+N/-S (usft)	+E/-W (usft)	Direction (°)
	0.00	0.00	0.00	60.68

Plan Sections										
Measured Depth (usft)	Inclination (°)	Azimuth (°)	Vertical Depth (usft)	+N/-S (usft)	+E/-W (usft)	Dogleg Rate (°/100usft)	Build Rate (°/100usft)	Turn Rate (°/100usft)	TFO (°)	Target
0.00	0.00	0.00	0.00	0.00	0.00	0.00	0.00	0.00	0.000	
120.00	0.00	0.00	120.00	0.00	0.00	0.00	0.00	0.00	0.000	
1,145.81	35.90	60.68	1,079.98	152.31	271.18	3.50	3.50	0.00	60.679	
3,011.29	35.90	60.68	2,591.04	688.01	1,224.98	0.00	0.00	0.00	0.000	
4,806.45	0.00	0.00	4,271.00	954.55	1,699.54	2.00	-2.00	0.00	180.000	
4,906.45	0.00	0.00	4,371.00	954.55	1,699.54	0.00	0.00	0.00	0.000	Top Gas (50' Radius)
7,056.45	0.00	0.00	6,521.00	954.55	1,699.54	0.00	0.00	0.00	0.000	

WPX
Planning Report - Geographic

Database:	COMPASS-PICEANCE	Local Co-ordinate Reference:	Well PA 343-6 - Slot B02
Company:	PICEANCE VLY NAD 83	TVD Reference:	KELLY BUSHING @ 5160.00usft (Aztec 1000 (25' RKB) kjs)
Project:	PA 06-07S-095W	MD Reference:	KELLY BUSHING @ 5160.00usft (Aztec 1000 (25' RKB) kjs)
Site:	PA 24-6 Pad	North Reference:	True
Well:	PA 343-6	Survey Calculation Method:	Minimum Curvature
Wellbore:	Wellbore #1		
Design:	Design #4 26Feb14 kjs		

Planned Survey									
Measured Depth (usft)	Inclination (°)	Azimuth (°)	Vertical Depth (usft)	+N/-S (usft)	+E/-W (usft)	Map Northing (usft)	Map Easting (usft)	Latitude	Longitude
0.00	0.00	0.00	0.00	0.00	0.00	1,603,194.60	2,282,590.40	39.46199	-108.04130
100.00	0.00	0.00	100.00	0.00	0.00	1,603,194.60	2,282,590.40	39.46199	-108.04130
120.00	0.00	0.00	120.00	0.00	0.00	1,603,194.60	2,282,590.40	39.46199	-108.04130
Start Build 3.50									
200.00	2.80	60.68	199.97	0.96	1.70	1,603,195.50	2,282,592.13	39.46200	-108.04130
300.00	6.30	60.68	299.64	4.84	8.62	1,603,199.19	2,282,599.15	39.46201	-108.04127
400.00	9.80	60.68	398.64	11.70	20.83	1,603,205.71	2,282,611.55	39.46202	-108.04123
500.00	13.30	60.68	496.60	21.50	38.28	1,603,215.02	2,282,629.27	39.46205	-108.04117
600.00	16.80	60.68	593.15	34.21	60.92	1,603,227.09	2,282,652.25	39.46209	-108.04109
700.00	20.30	60.68	687.94	49.79	88.65	1,603,241.89	2,282,680.41	39.46213	-108.04099
800.00	23.80	60.68	780.61	68.17	121.38	1,603,259.34	2,282,713.63	39.46218	-108.04087
900.00	27.30	60.68	870.82	89.29	158.98	1,603,279.40	2,282,751.81	39.46224	-108.04074
1,000.00	30.80	60.68	958.23	113.06	201.31	1,603,301.98	2,282,794.78	39.46230	-108.04059
1,100.00	34.30	60.68	1,042.50	139.41	248.21	1,603,327.00	2,282,842.40	39.46238	-108.04043
1,145.81	35.90	60.68	1,079.98	152.31	271.18	1,603,339.25	2,282,865.72	39.46241	-108.04034
Hold 35.90 Inclination									
1,200.00	35.90	60.68	1,123.88	167.87	298.88	1,603,354.03	2,282,893.85	39.46245	-108.04025
1,246.00	35.90	60.68	1,161.14	181.08	322.40	1,603,366.58	2,282,917.73	39.46249	-108.04016
9 5/8"									
1,300.00	35.90	60.68	1,204.88	196.59	350.01	1,603,381.31	2,282,945.76	39.46253	-108.04007
1,400.00	35.90	60.68	1,285.88	225.30	401.14	1,603,408.58	2,282,997.67	39.46261	-108.03988
1,500.00	35.90	60.68	1,366.88	254.02	452.27	1,603,435.86	2,283,049.58	39.46269	-108.03970
1,600.00	35.90	60.68	1,447.88	282.74	503.40	1,603,463.13	2,283,101.49	39.46277	-108.03952
1,700.00	35.90	60.68	1,528.88	311.45	554.53	1,603,490.40	2,283,153.40	39.46285	-108.03934
1,800.00	35.90	60.68	1,609.88	340.17	605.66	1,603,517.68	2,283,205.31	39.46293	-108.03916
1,863.11	35.90	60.68	1,661.00	358.29	637.93	1,603,534.89	2,283,238.07	39.46298	-108.03905
Top of "G" Sand									
1,900.00	35.90	60.68	1,690.88	368.89	656.79	1,603,544.95	2,283,257.22	39.46301	-108.03898
1,986.56	35.90	60.68	1,761.00	393.75	701.05	1,603,568.56	2,283,302.16	39.46307	-108.03882
Base of "G" Sand									
2,000.00	35.90	60.68	1,771.88	397.60	707.92	1,603,572.23	2,283,309.13	39.46308	-108.03880
2,100.00	35.90	60.68	1,852.88	426.32	759.05	1,603,599.50	2,283,361.04	39.46316	-108.03862
2,200.00	35.90	60.68	1,933.88	455.04	810.18	1,603,626.78	2,283,412.95	39.46324	-108.03844
2,300.00	35.90	60.68	2,014.89	483.75	861.31	1,603,654.05	2,283,464.86	39.46332	-108.03825
2,400.00	35.90	60.68	2,095.89	512.47	912.44	1,603,681.32	2,283,516.77	39.46340	-108.03807
2,500.00	35.90	60.68	2,176.89	541.19	963.57	1,603,708.60	2,283,568.68	39.46348	-108.03789
2,600.00	35.90	60.68	2,257.89	569.90	1,014.70	1,603,735.87	2,283,620.59	39.46356	-108.03771
2,700.00	35.90	60.68	2,338.89	598.62	1,065.82	1,603,763.15	2,283,672.50	39.46364	-108.03753
2,800.00	35.90	60.68	2,419.89	627.34	1,116.95	1,603,790.42	2,283,724.41	39.46371	-108.03735
2,900.00	35.90	60.68	2,500.89	656.06	1,168.08	1,603,817.70	2,283,776.32	39.46379	-108.03717
3,000.00	35.90	60.68	2,581.89	684.77	1,219.21	1,603,844.97	2,283,828.23	39.46387	-108.03699
3,011.29	35.90	60.68	2,591.04	688.01	1,224.98	1,603,848.05	2,283,834.09	39.46388	-108.03697
Start Drop -2.00									
3,100.00	34.13	60.68	2,663.69	712.94	1,269.36	1,603,871.72	2,283,879.15	39.46395	-108.03681
3,200.00	32.13	60.68	2,747.43	739.70	1,317.01	1,603,897.14	2,283,927.53	39.46402	-108.03664
3,300.00	30.13	60.68	2,833.02	765.02	1,362.09	1,603,921.18	2,283,973.29	39.46409	-108.03648
3,400.00	28.13	60.68	2,920.37	788.85	1,404.52	1,603,943.82	2,284,016.38	39.46416	-108.03633
3,500.00	26.13	60.68	3,009.36	811.18	1,444.28	1,603,965.03	2,284,056.74	39.46422	-108.03619
3,600.00	24.13	60.68	3,099.90	831.98	1,481.30	1,603,984.78	2,284,094.33	39.46428	-108.03606
3,700.00	22.13	60.68	3,191.85	851.21	1,515.55	1,604,003.05	2,284,129.10	39.46433	-108.03594
3,800.00	20.13	60.68	3,285.13	868.86	1,546.98	1,604,019.81	2,284,161.01	39.46438	-108.03583

WPX
Planning Report - Geographic

Database:	COMPASS-PICEANCE	Local Co-ordinate Reference:	Well PA 343-6 - Slot B02
Company:	PICEANCE VLY NAD 83	TVD Reference:	KELLY BUSHING @ 5160.00usft (Aztec 1000 (25' RKB) kjs)
Project:	PA 06-07S-095W	MD Reference:	KELLY BUSHING @ 5160.00usft (Aztec 1000 (25' RKB) kjs)
Site:	PA 24-6 Pad	North Reference:	True
Well:	PA 343-6	Survey Calculation Method:	Minimum Curvature
Wellbore:	Wellbore #1		
Design:	Design #4 26Feb14 kjs		

Planned Survey									
Measured Depth (usft)	Inclination (°)	Azimuth (°)	Vertical Depth (usft)	+N/-S (usft)	+E/-W (usft)	Map Northing (usft)	Map Easting (usft)	Latitude	Longitude
3,854.00	19.05	60.68	3,336.00	877.73	1,562.76	1,604,028.23	2,284,177.03	39.46440	-108.03577
Mesaverde									
3,900.00	18.13	60.68	3,379.60	884.91	1,575.55	1,604,035.05	2,284,190.01	39.46442	-108.03572
4,000.00	16.13	60.68	3,475.16	899.33	1,601.23	1,604,048.75	2,284,216.08	39.46446	-108.03563
4,100.00	14.13	60.68	3,571.69	912.11	1,623.98	1,604,060.89	2,284,239.19	39.46450	-108.03555
4,200.00	12.13	60.68	3,669.07	923.23	1,643.78	1,604,071.45	2,284,259.29	39.46453	-108.03548
4,300.00	10.13	60.68	3,767.18	932.68	1,660.61	1,604,080.43	2,284,276.38	39.46455	-108.03542
4,400.00	8.13	60.68	3,865.91	940.45	1,674.45	1,604,087.81	2,284,290.42	39.46457	-108.03537
4,500.00	6.13	60.68	3,965.13	946.53	1,685.27	1,604,093.58	2,284,301.41	39.46459	-108.03534
4,600.00	4.13	60.68	4,064.73	950.91	1,693.06	1,604,097.74	2,284,309.32	39.46460	-108.03531
4,700.00	2.13	60.68	4,164.57	953.58	1,697.82	1,604,100.28	2,284,314.15	39.46461	-108.03529
4,800.00	0.13	60.68	4,264.55	954.55	1,699.54	1,604,101.19	2,284,315.89	39.46461	-108.03529
4,806.45	0.00	0.00	4,271.00	954.55	1,699.54	1,604,101.20	2,284,315.90	39.46461	-108.03529
Vertical									
4,900.00	0.00	0.00	4,364.55	954.55	1,699.54	1,604,101.20	2,284,315.90	39.46461	-108.03529
4,906.45	0.00	0.00	4,371.00	954.55	1,699.54	1,604,101.20	2,284,315.90	39.46461	-108.03529
Top Gas - Approx. Top Gas									
5,000.00	0.00	0.00	4,464.55	954.55	1,699.54	1,604,101.20	2,284,315.90	39.46461	-108.03529
5,100.00	0.00	0.00	4,564.55	954.55	1,699.54	1,604,101.20	2,284,315.90	39.46461	-108.03529
5,200.00	0.00	0.00	4,664.55	954.55	1,699.54	1,604,101.20	2,284,315.90	39.46461	-108.03529
5,300.00	0.00	0.00	4,764.55	954.55	1,699.54	1,604,101.20	2,284,315.90	39.46461	-108.03529
5,400.00	0.00	0.00	4,864.55	954.55	1,699.54	1,604,101.20	2,284,315.90	39.46461	-108.03529
5,500.00	0.00	0.00	4,964.55	954.55	1,699.54	1,604,101.20	2,284,315.90	39.46461	-108.03529
5,600.00	0.00	0.00	5,064.55	954.55	1,699.54	1,604,101.20	2,284,315.90	39.46461	-108.03529
5,700.00	0.00	0.00	5,164.55	954.55	1,699.54	1,604,101.20	2,284,315.90	39.46461	-108.03529
5,800.00	0.00	0.00	5,264.55	954.55	1,699.54	1,604,101.20	2,284,315.90	39.46461	-108.03529
5,900.00	0.00	0.00	5,364.55	954.55	1,699.54	1,604,101.20	2,284,315.90	39.46461	-108.03529
6,000.00	0.00	0.00	5,464.55	954.55	1,699.54	1,604,101.20	2,284,315.90	39.46461	-108.03529
6,100.00	0.00	0.00	5,564.55	954.55	1,699.54	1,604,101.20	2,284,315.90	39.46461	-108.03529
6,200.00	0.00	0.00	5,664.55	954.55	1,699.54	1,604,101.20	2,284,315.90	39.46461	-108.03529
6,300.00	0.00	0.00	5,764.55	954.55	1,699.54	1,604,101.20	2,284,315.90	39.46461	-108.03529
6,376.45	0.00	0.00	5,841.00	954.55	1,699.54	1,604,101.20	2,284,315.90	39.46461	-108.03529
Cameo Coals									
6,400.00	0.00	0.00	5,864.55	954.55	1,699.54	1,604,101.20	2,284,315.90	39.46461	-108.03529
6,500.00	0.00	0.00	5,964.55	954.55	1,699.54	1,604,101.20	2,284,315.90	39.46461	-108.03529
6,600.00	0.00	0.00	6,064.55	954.55	1,699.54	1,604,101.20	2,284,315.90	39.46461	-108.03529
6,700.00	0.00	0.00	6,164.55	954.55	1,699.54	1,604,101.20	2,284,315.90	39.46461	-108.03529
6,800.00	0.00	0.00	6,264.55	954.55	1,699.54	1,604,101.20	2,284,315.90	39.46461	-108.03529
6,900.00	0.00	0.00	6,364.55	954.55	1,699.54	1,604,101.20	2,284,315.90	39.46461	-108.03529
6,906.45	0.00	0.00	6,371.00	954.55	1,699.54	1,604,101.20	2,284,315.90	39.46461	-108.03529
Rollins SS									
7,000.00	0.00	0.00	6,464.55	954.55	1,699.54	1,604,101.20	2,284,315.90	39.46461	-108.03529
7,056.45	0.00	0.00	6,521.00	954.55	1,699.54	1,604,101.20	2,284,315.90	39.46461	-108.03529
TD at 7056.45 - TD									

WPX
Planning Report - Geographic

Database:	COMPASS-PICEANCE	Local Co-ordinate Reference:	Well PA 343-6 - Slot B02
Company:	PICEANCE VLY NAD 83	TVD Reference:	KELLY BUSHING @ 5160.00usft (Aztec 1000 (25' RKB) kjs)
Project:	PA 06-07S-095W	MD Reference:	KELLY BUSHING @ 5160.00usft (Aztec 1000 (25' RKB) kjs)
Site:	PA 24-6 Pad	North Reference:	True
Well:	PA 343-6	Survey Calculation Method:	Minimum Curvature
Wellbore:	Wellbore #1		
Design:	Design #4 26Feb14 kjs		

Design Targets									
Target Name - hit/miss target - Shape	Dip Angle (°)	Dip Dir. (°)	TVD (usft)	+N/-S (usft)	+E/-W (usft)	Northing (usft)	Easting (usft)	Latitude	Longitude
Top Gas (50' Radius) PA - plan hits target center - Circle (radius 50.00)	0.00	0.00	4,371.00	954.55	1,699.54	1,604,101.20	2,284,315.90	39.46461	-108.03529

Casing Points					
Measured Depth (usft)	Vertical Depth (usft)	Name	Casing Diameter (in)	Hole Diameter (in)	
1,246.00	1,161.14	9 5/8"	9.625	12.250	

Formations						
Measured Depth (usft)	Vertical Depth (usft)	Name	Lithology	Dip (°)	Dip Direction (°)	
1,863.11	1,661.00	Top of "G" Sand				
1,986.56	1,761.00	Base of "G" Sand				
3,854.00	3,336.00	Mesaverde				
4,906.45	4,371.00	Approx. Top Gas				
6,376.45	5,841.00	Cameo Coals				
6,906.45	6,371.00	Rollins SS				
7,056.45	6,521.00	TD				

Plan Annotations					
Measured Depth (usft)	Vertical Depth (usft)	Local Coordinates			
		+N/-S (usft)	+E/-W (usft)	Comment	
120.00	120.00	0.00	0.00	Start Build 3.50	
1,145.81	1,079.98	152.31	271.18	Hold 35.90 Inclination	
3,011.29	2,591.04	688.01	1,224.98	Start Drop -2.00	
4,806.45	4,271.00	954.55	1,699.54	Vertical	
4,906.45	4,371.00	954.55	1,699.54	Top Gas	
7,056.45	6,521.00	954.55	1,699.54	TD at 7056.45	