



**Bill Barrett Corporation**

## COMPANY DETAILS: BILL BARRETT CORP

Calculation Method: Minimum Curvature  
Error System: ISCWSA  
Scan Method: Closest Approach 3D  
Error Surface: Elliptical Conic  
Warning Method: Error Ratio

## REFERENCE INFORMATION

Co-ordinate (N/E) Reference: Well Anschutz Equus Farms 4-62-33-6457CH2, True North  
Vertical (TVD) Reference: KB @ 4696.0ft (Original Well Elev)  
Section (VS) Reference: Slot - (0.0N, 0.0E)  
Measured Depth Reference: KB @ 4696.0ft (Original Well Elev)  
Calculation Method: Minimum Curvature

## WELL DETAILS: Anschutz Equus Farms 4-62-33-6457CH2

+N/-S	+E/-W	Northing	Easting	Latitude	Longitude
0.0	0.0	1340979.73	3324445.53	40° 15' 48.780 N	104° 20' 14.550 W

## SECTION DETAILS

Sec	MD	Inc	Azi	TVD	+N/-S	+E/-W	DLeg	TFace	VSec	Target
1	0.0	0.00	0.00	0.0	0.0	0.0	0.00	0.00	0.0	
2	1000.0	0.00	0.00	1000.0	0.0	0.0	0.00	0.00	0.0	
3	1152.4	3.05	258.69	1152.3	-0.8	-4.0	2.00	258.69	-4.0	
4	5472.5	3.05	258.69	5466.3	-45.8	-229.2	0.00	0.00	-228.9	
5	5624.8	0.00	90.00	5618.6	-46.6	-233.1	2.00	180.00	-232.9	
6	5874.8	0.00	90.00	5868.6	-46.6	-233.1	0.00	90.00	-232.9	
7	6630.8	90.72	90.00	6346.0	-46.6	250.3	12.00	90.00	250.5	AEF 33-6457CH2 LP
8	16180.6	90.72	90.00	6226.0	-46.5	9799.3	0.00	0.00	9799.4	AEF 33-6457CH2 PBHL

## PROJECT DETAILS: WELD COUNTY, COLORADO

Geodetic System: US State Plane 1983  
Datum: North American Datum 1983  
Ellipsoid: GRS 1980  
Zone: Colorado Northern Zone

## FORMATION TOP DETAILS

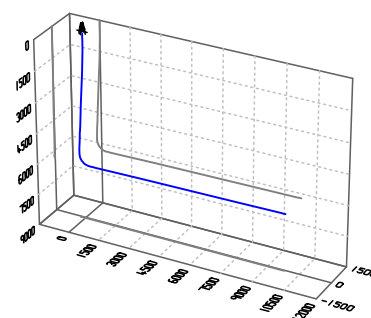
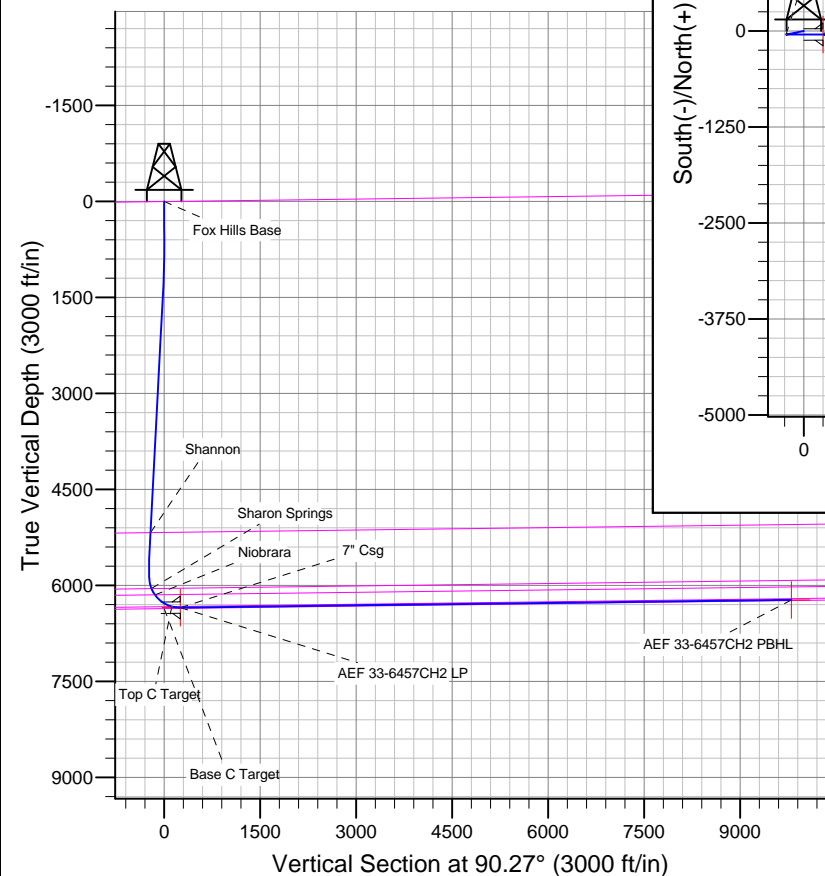
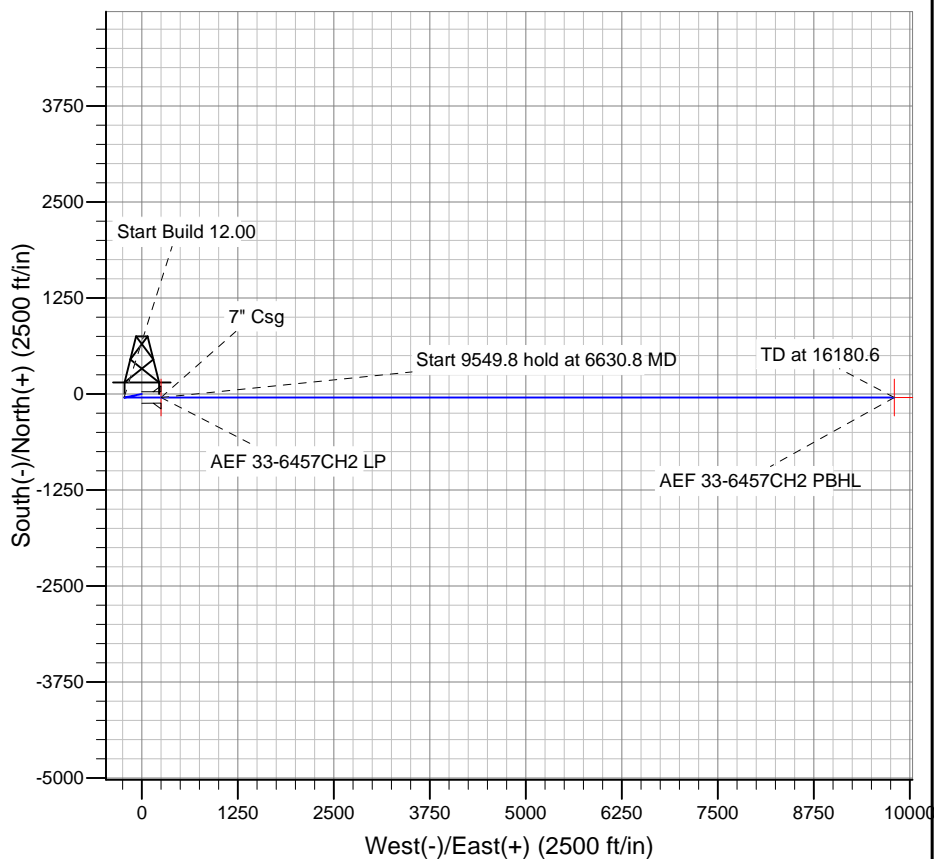
TVDPath	MDPath	Formation
		Base C Target
		Fox Hills Base
5174.7	5180.5	Shannon
6048.5	6059.3	Sharon Springs
6147.8	6173.1	Niobrara
6329.5	6498.8	Top C Target

## WELLBORE TARGET DETAILS

Name	TVD	+N/-S	+E/-W	Shape
AEF 33-6457CH2 PBHL	6226.0	-46.5	9799.3	Point
AEF 33-6457CH2 LP	6346.0	-46.6	250.3	Point

## CASING DETAILS

TVD	MD	Name	Size
6346.0	6630.8	7" Csg	7



Azimuths to True North  
Magnetic North: 8.25°

Magnetic Field  
Strength: 52814.4snT  
Dip Angle: 66.91°  
Date: 3/20/2014  
Model: IGRF2010

# **BILL BARRETT CORP**

**WELD COUNTY, COLORADO**

**Anschutz Equus Farms 4-62-33\_34 S2S2 Pad**

**Anschutz Equus Farms 4-62-33-6457CH2**

**Wellbore #1**

**Plan: Design #1**

## **Standard Planning Report**

**20 March, 2014**

# Bill Barrett Corp

## Planning Report

<b>Database:</b>	Compass	<b>Local Co-ordinate Reference:</b>	Well Anschutz Equus Farms 4-62-33-6457CH2
<b>Company:</b>	BILL BARRETT CORP	<b>TVD Reference:</b>	KB @ 4696.0ft (Original Well Elev)
<b>Project:</b>	WELD COUNTY, COLORADO	<b>MD Reference:</b>	KB @ 4696.0ft (Original Well Elev)
<b>Site:</b>	Anschutz Equus Farms 4-62-33_34 S2S2 Pad	<b>North Reference:</b>	True
<b>Well:</b>	Anschutz Equus Farms 4-62-33-6457CH2	<b>Survey Calculation Method:</b>	Minimum Curvature
<b>Wellbore:</b>	Wellbore #1		
<b>Design:</b>	Design #1		

<b>Project</b>	WELD COUNTY, COLORADO		
<b>Map System:</b>	US State Plane 1983	<b>System Datum:</b>	Mean Sea Level
<b>Geo Datum:</b>	North American Datum 1983		
<b>Map Zone:</b>	Colorado Northern Zone		

Site		Anschutz Equus Farms 4-62-33_34 S2S2 Pad			
Site Position:		Northing:	1,340,979.73ft	Latitude:	40° 15' 48.780 N
From:	Lat/Long	Easting:	3,324,445.53ft	Longitude:	104° 20' 14.550 W
Position Uncertainty:	0.0 ft	Slot Radius:	"	Grid Convergence:	0.75 °

Well	Anschutz Equus Farms 4-62-33-6457CH2					
Well Position	+N-S	0.0 ft	Northing:	1,340,979.73 ft	Latitude:	40° 15' 48.780 N
	+E-W	0.0 ft	Easting:	3,324,445.53 ft	Longitude:	104° 20' 14.550 W
Position Uncertainty		0.0 ft	Wellhead Elevation:	ft	Ground Level:	4,680.0 ft

<b>Wellbore</b>	Wellbore #1				
<b>Magnetics</b>	<b>Model Name</b>	<b>Sample Date</b>	<b>Declination (°)</b>	<b>Dip Angle (°)</b>	<b>Field Strength (nT)</b>
	IGRF2010	3/20/2014	8.25	66.91	52,814

<b>Design</b>	Design #1			
<b>Audit Notes:</b>				
<b>Version:</b>	<b>Phase:</b>	PLAN	<b>Tie On Depth:</b>	0.0
<b>Vertical Section:</b>	<b>Depth From (TVD) (ft)</b>	<b>+N/-S (ft)</b>	<b>+E/-W (ft)</b>	<b>Direction (°)</b>
	0.0	0.0	0.0	90.27

<b>Plan Sections</b>										
Measured Depth (ft)	Inclination (°)	Azimuth (°)	Vertical Depth (ft)	+N/-S (ft)	+E/-W (ft)	Dogleg Rate (°/100ft)	Build Rate (°/100ft)	Turn Rate (°/100ft)	TFO (°)	Target
0.0	0.00	0.00	0.0	0.0	0.0	0.00	0.00	0.00	0.00	
1,000.0	0.00	0.00	1,000.0	0.0	0.0	0.00	0.00	0.00	0.00	
1,152.4	3.05	258.69	1,152.3	-0.8	-4.0	2.00	2.00	0.00	258.69	
5,472.5	3.05	258.69	5,466.3	-45.8	-229.2	0.00	0.00	0.00	0.00	
5,624.8	0.00	90.00	5,618.6	-46.6	-233.1	2.00	-2.00	0.00	180.00	
5,874.8	0.00	90.00	5,868.6	-46.6	-233.1	0.00	0.00	0.00	90.00	
6,630.8	90.72	90.00	6,346.0	-46.6	250.3	12.00	12.00	0.00	90.00	AEF 33-6457CH2 L
16,180.6	90.72	90.00	6,226.0	-46.5	9,799.3	0.00	0.00	0.00	0.00	AEF 33-6457CH2 F

# Bill Barrett Corp

## Planning Report

<b>Database:</b>	Compass	<b>Local Co-ordinate Reference:</b>	Well Anschutz Equus Farms 4-62-33-6457CH2
<b>Company:</b>	BILL BARRETT CORP	<b>TVD Reference:</b>	KB @ 4696.0ft (Original Well Elev)
<b>Project:</b>	WELD COUNTY, COLORADO	<b>MD Reference:</b>	KB @ 4696.0ft (Original Well Elev)
<b>Site:</b>	Anschutz Equus Farms 4-62-33_34 S2S2 Pad	<b>North Reference:</b>	True
<b>Well:</b>	Anschutz Equus Farms 4-62-33-6457CH2	<b>Survey Calculation Method:</b>	Minimum Curvature
<b>Wellbore:</b>	Wellbore #1		
<b>Design:</b>	Design #1		

Planned Survey										
Measured Depth (ft)	Inclination (°)	Azimuth (°)	Vertical Depth (ft)	+N/-S (ft)	+E/-W (ft)	Vertical Section (ft)	Dogleg Rate (°/100ft)	Build Rate (°/100ft)	Turn Rate (°/100ft)	
0.0	0.00	0.00	0.0	0.0	0.0	0.0	0.00	0.00	0.00	
100.0	0.00	0.00	100.0	0.0	0.0	0.0	0.00	0.00	0.00	
200.0	0.00	0.00	200.0	0.0	0.0	0.0	0.00	0.00	0.00	
300.0	0.00	0.00	300.0	0.0	0.0	0.0	0.00	0.00	0.00	
400.0	0.00	0.00	400.0	0.0	0.0	0.0	0.00	0.00	0.00	
500.0	0.00	0.00	500.0	0.0	0.0	0.0	0.00	0.00	0.00	
600.0	0.00	0.00	600.0	0.0	0.0	0.0	0.00	0.00	0.00	
700.0	0.00	0.00	700.0	0.0	0.0	0.0	0.00	0.00	0.00	
800.0	0.00	0.00	800.0	0.0	0.0	0.0	0.00	0.00	0.00	
900.0	0.00	0.00	900.0	0.0	0.0	0.0	0.00	0.00	0.00	
1,000.0	0.00	0.00	1,000.0	0.0	0.0	0.0	0.00	0.00	0.00	
1,100.0	2.00	258.69	1,100.0	-0.3	-1.7	-1.7	2.00	2.00	0.00	
1,152.4	3.05	258.69	1,152.3	-0.8	-4.0	-4.0	2.00	2.00	0.00	
1,200.0	3.05	258.69	1,199.9	-1.3	-6.5	-6.4	0.00	0.00	0.00	
1,300.0	3.05	258.69	1,299.7	-2.3	-11.7	-11.7	0.00	0.00	0.00	
1,400.0	3.05	258.69	1,399.6	-3.4	-16.9	-16.9	0.00	0.00	0.00	
1,500.0	3.05	258.69	1,499.4	-4.4	-22.1	-22.1	0.00	0.00	0.00	
1,600.0	3.05	258.69	1,599.3	-5.5	-27.3	-27.3	0.00	0.00	0.00	
1,700.0	3.05	258.69	1,699.2	-6.5	-32.5	-32.5	0.00	0.00	0.00	
1,800.0	3.05	258.69	1,799.0	-7.5	-37.7	-37.7	0.00	0.00	0.00	
1,900.0	3.05	258.69	1,898.9	-8.6	-42.9	-42.9	0.00	0.00	0.00	
2,000.0	3.05	258.69	1,998.7	-9.6	-48.2	-48.1	0.00	0.00	0.00	
2,100.0	3.05	258.69	2,098.6	-10.7	-53.4	-53.3	0.00	0.00	0.00	
2,200.0	3.05	258.69	2,198.4	-11.7	-58.6	-58.5	0.00	0.00	0.00	
2,300.0	3.05	258.69	2,298.3	-12.8	-63.8	-63.7	0.00	0.00	0.00	
2,400.0	3.05	258.69	2,398.2	-13.8	-69.0	-68.9	0.00	0.00	0.00	
2,500.0	3.05	258.69	2,498.0	-14.8	-74.2	-74.1	0.00	0.00	0.00	
2,600.0	3.05	258.69	2,597.9	-15.9	-79.4	-79.4	0.00	0.00	0.00	
2,700.0	3.05	258.69	2,697.7	-16.9	-84.6	-84.6	0.00	0.00	0.00	
2,800.0	3.05	258.69	2,797.6	-18.0	-89.9	-89.8	0.00	0.00	0.00	
2,900.0	3.05	258.69	2,897.5	-19.0	-95.1	-95.0	0.00	0.00	0.00	
3,000.0	3.05	258.69	2,997.3	-20.1	-100.3	-100.2	0.00	0.00	0.00	
3,100.0	3.05	258.69	3,097.2	-21.1	-105.5	-105.4	0.00	0.00	0.00	
3,200.0	3.05	258.69	3,197.0	-22.1	-110.7	-110.6	0.00	0.00	0.00	
3,300.0	3.05	258.69	3,296.9	-23.2	-115.9	-115.8	0.00	0.00	0.00	
3,400.0	3.05	258.69	3,396.8	-24.2	-121.1	-121.0	0.00	0.00	0.00	
3,500.0	3.05	258.69	3,496.6	-25.3	-126.3	-126.2	0.00	0.00	0.00	
3,600.0	3.05	258.69	3,596.5	-26.3	-131.6	-131.4	0.00	0.00	0.00	
3,700.0	3.05	258.69	3,696.3	-27.4	-136.8	-136.6	0.00	0.00	0.00	
3,800.0	3.05	258.69	3,796.2	-28.4	-142.0	-141.8	0.00	0.00	0.00	
3,900.0	3.05	258.69	3,896.0	-29.4	-147.2	-147.1	0.00	0.00	0.00	
4,000.0	3.05	258.69	3,995.9	-30.5	-152.4	-152.3	0.00	0.00	0.00	
4,100.0	3.05	258.69	4,095.8	-31.5	-157.6	-157.5	0.00	0.00	0.00	
4,200.0	3.05	258.69	4,195.6	-32.6	-162.8	-162.7	0.00	0.00	0.00	
4,300.0	3.05	258.69	4,295.5	-33.6	-168.0	-167.9	0.00	0.00	0.00	
4,400.0	3.05	258.69	4,395.3	-34.7	-173.3	-173.1	0.00	0.00	0.00	
4,500.0	3.05	258.69	4,495.2	-35.7	-178.5	-178.3	0.00	0.00	0.00	
4,600.0	3.05	258.69	4,595.1	-36.7	-183.7	-183.5	0.00	0.00	0.00	
4,700.0	3.05	258.69	4,694.9	-37.8	-188.9	-188.7	0.00	0.00	0.00	
4,800.0	3.05	258.69	4,794.8	-38.8	-194.1	-193.9	0.00	0.00	0.00	
4,900.0	3.05	258.69	4,894.6	-39.9	-199.3	-199.1	0.00	0.00	0.00	
5,000.0	3.05	258.69	4,994.5	-40.9	-204.5	-204.3	0.00	0.00	0.00	
5,100.0	3.05	258.69	5,094.3	-42.0	-209.8	-209.5	0.00	0.00	0.00	

# Bill Barrett Corp

## Planning Report

<b>Database:</b>	Compass	<b>Local Co-ordinate Reference:</b>	Well Anschutz Equus Farms 4-62-33-6457CH2
<b>Company:</b>	BILL BARRETT CORP	<b>TVD Reference:</b>	KB @ 4696.0ft (Original Well Elev)
<b>Project:</b>	WELD COUNTY, COLORADO	<b>MD Reference:</b>	KB @ 4696.0ft (Original Well Elev)
<b>Site:</b>	Anschutz Equus Farms 4-62-33_34 S2S2 Pad	<b>North Reference:</b>	True
<b>Well:</b>	Anschutz Equus Farms 4-62-33-6457CH2	<b>Survey Calculation Method:</b>	Minimum Curvature
<b>Wellbore:</b>	Wellbore #1		
<b>Design:</b>	Design #1		

### Planned Survey

Measured Depth (ft)	Inclination (°)	Azimuth (°)	Vertical Depth (ft)	+N/-S (ft)	+E/-W (ft)	Vertical Section (ft)	Dogleg Rate (°/100ft)	Build Rate (°/100ft)	Turn Rate (°/100ft)
5,180.5	3.05	258.69	5,174.7	-42.8	-213.9	-213.7	0.00	0.00	0.00
<b>Shannon</b>									
5,200.0	3.05	258.69	5,194.2	-43.0	-215.0	-214.8	0.00	0.00	0.00
5,300.0	3.05	258.69	5,294.1	-44.0	-220.2	-220.0	0.00	0.00	0.00
5,400.0	3.05	258.69	5,393.9	-45.1	-225.4	-225.2	0.00	0.00	0.00
5,472.5	3.05	258.69	5,466.3	-45.8	-229.2	-228.9	0.00	0.00	0.00
5,500.0	2.50	258.69	5,493.8	-46.1	-230.5	-230.3	2.00	-2.00	0.00
5,600.0	0.50	258.69	5,593.7	-46.6	-233.0	-232.8	2.00	-2.00	0.00
5,624.8	0.00	90.00	5,618.6	-46.6	-233.1	-232.9	2.00	-2.00	0.00
5,700.0	0.00	90.00	5,693.7	-46.6	-233.1	-232.9	0.00	0.00	0.00
5,800.0	0.00	90.00	5,793.7	-46.6	-233.1	-232.9	0.00	0.00	0.00
5,874.8	0.00	90.00	5,868.6	-46.6	-233.1	-232.9	0.00	0.00	0.00
5,900.0	3.02	90.00	5,893.7	-46.6	-232.5	-232.3	12.00	12.00	0.00
6,000.0	15.02	90.00	5,992.3	-46.6	-216.8	-216.6	12.00	12.00	0.00
6,059.3	22.14	90.00	6,048.5	-46.6	-197.9	-197.7	12.00	12.00	0.00
<b>Sharon Springs</b>									
6,100.0	27.02	90.00	6,085.5	-46.6	-181.0	-180.8	12.00	12.00	0.00
6,173.1	35.79	90.00	6,147.8	-46.6	-143.0	-142.8	12.00	12.00	0.00
<b>Niobrara</b>									
6,200.0	39.02	90.00	6,169.2	-46.6	-126.6	-126.4	12.00	12.00	0.00
6,300.0	51.02	90.00	6,239.7	-46.6	-56.0	-55.8	12.00	12.00	0.00
6,400.0	63.02	90.00	6,294.1	-46.6	27.7	27.9	12.00	12.00	0.00
6,498.8	74.87	90.00	6,329.5	-46.6	119.7	120.0	12.00	12.00	0.00
<b>Top C Target</b>									
6,500.0	75.02	90.00	6,329.8	-46.6	120.9	121.1	12.00	12.00	0.00
6,600.0	87.02	90.00	6,345.4	-46.6	219.5	219.7	12.00	12.00	0.00
6,630.8	90.72	90.00	6,346.0	-46.6	250.3	250.5	11.99	11.99	0.00
<b>7" Csg - AEF 33-6457CH2 LP</b>									
6,700.0	90.72	90.00	6,345.1	-46.6	319.5	319.7	0.00	0.00	0.00
6,800.0	90.72	90.00	6,343.9	-46.6	419.5	419.7	0.00	0.00	0.00
6,900.0	90.72	90.00	6,342.6	-46.6	519.5	519.7	0.00	0.00	0.00
7,000.0	90.72	90.00	6,341.4	-46.6	619.5	619.7	0.00	0.00	0.00
7,100.0	90.72	90.00	6,340.1	-46.6	719.5	719.7	0.00	0.00	0.00
7,200.0	90.72	90.00	6,338.8	-46.6	819.5	819.7	0.00	0.00	0.00
7,300.0	90.72	90.00	6,337.6	-46.6	919.4	919.7	0.00	0.00	0.00
7,400.0	90.72	90.00	6,336.3	-46.6	1,019.4	1,019.7	0.00	0.00	0.00
7,500.0	90.72	90.00	6,335.1	-46.6	1,119.4	1,119.6	0.00	0.00	0.00
7,600.0	90.72	90.00	6,333.8	-46.6	1,219.4	1,219.6	0.00	0.00	0.00
7,700.0	90.72	90.00	6,332.6	-46.6	1,319.4	1,319.6	0.00	0.00	0.00
7,800.0	90.72	90.00	6,331.3	-46.6	1,419.4	1,419.6	0.00	0.00	0.00
7,900.0	90.72	90.00	6,330.1	-46.6	1,519.4	1,519.6	0.00	0.00	0.00
8,000.0	90.72	90.00	6,328.8	-46.6	1,619.4	1,619.6	0.00	0.00	0.00
8,100.0	90.72	90.00	6,327.5	-46.6	1,719.4	1,719.6	0.00	0.00	0.00
8,200.0	90.72	90.00	6,326.3	-46.6	1,819.4	1,819.6	0.00	0.00	0.00
8,300.0	90.72	90.00	6,325.0	-46.6	1,919.4	1,919.6	0.00	0.00	0.00
8,400.0	90.72	90.00	6,323.8	-46.6	2,019.4	2,019.6	0.00	0.00	0.00
8,500.0	90.72	90.00	6,322.5	-46.6	2,119.4	2,119.6	0.00	0.00	0.00
8,600.0	90.72	90.00	6,321.3	-46.6	2,219.3	2,219.5	0.00	0.00	0.00
8,700.0	90.72	90.00	6,320.0	-46.6	2,319.3	2,319.5	0.00	0.00	0.00
8,800.0	90.72	90.00	6,318.7	-46.6	2,419.3	2,419.5	0.00	0.00	0.00
8,900.0	90.72	90.00	6,317.5	-46.6	2,519.3	2,519.5	0.00	0.00	0.00
9,000.0	90.72	90.00	6,316.2	-46.6	2,619.3	2,619.5	0.00	0.00	0.00

# Bill Barrett Corp

## Planning Report

<b>Database:</b>	Compass	<b>Local Co-ordinate Reference:</b>	Well Anschutz Equus Farms 4-62-33-6457CH2
<b>Company:</b>	BILL BARRETT CORP	<b>TVD Reference:</b>	KB @ 4696.0ft (Original Well Elev)
<b>Project:</b>	WELD COUNTY, COLORADO	<b>MD Reference:</b>	KB @ 4696.0ft (Original Well Elev)
<b>Site:</b>	Anschutz Equus Farms 4-62-33_34 S2S2 Pad	<b>North Reference:</b>	True
<b>Well:</b>	Anschutz Equus Farms 4-62-33-6457CH2	<b>Survey Calculation Method:</b>	Minimum Curvature
<b>Wellbore:</b>	Wellbore #1		
<b>Design:</b>	Design #1		

Planned Survey									
Measured Depth (ft)	Inclination (°)	Azimuth (°)	Vertical Depth (ft)	+N/-S (ft)	+E/-W (ft)	Vertical Section (ft)	Dogleg Rate (°/100ft)	Build Rate (°/100ft)	Turn Rate (°/100ft)
9,100.0	90.72	90.00	6,315.0	-46.6	2,719.3	2,719.5	0.00	0.00	0.00
9,200.0	90.72	90.00	6,313.7	-46.6	2,819.3	2,819.5	0.00	0.00	0.00
9,300.0	90.72	90.00	6,312.5	-46.6	2,919.3	2,919.5	0.00	0.00	0.00
9,400.0	90.72	90.00	6,311.2	-46.6	3,019.3	3,019.5	0.00	0.00	0.00
9,500.0	90.72	90.00	6,309.9	-46.6	3,119.3	3,119.5	0.00	0.00	0.00
9,600.0	90.72	90.00	6,308.7	-46.6	3,219.3	3,219.5	0.00	0.00	0.00
9,700.0	90.72	90.00	6,307.4	-46.6	3,319.3	3,319.4	0.00	0.00	0.00
9,800.0	90.72	90.00	6,306.2	-46.6	3,419.3	3,419.4	0.00	0.00	0.00
9,900.0	90.72	90.00	6,304.9	-46.6	3,519.2	3,519.4	0.00	0.00	0.00
10,000.0	90.72	90.00	6,303.7	-46.6	3,619.2	3,619.4	0.00	0.00	0.00
10,100.0	90.72	90.00	6,302.4	-46.6	3,719.2	3,719.4	0.00	0.00	0.00
10,200.0	90.72	90.00	6,301.2	-46.6	3,819.2	3,819.4	0.00	0.00	0.00
10,300.0	90.72	90.00	6,299.9	-46.6	3,919.2	3,919.4	0.00	0.00	0.00
10,400.0	90.72	90.00	6,298.6	-46.6	4,019.2	4,019.4	0.00	0.00	0.00
10,500.0	90.72	90.00	6,297.4	-46.6	4,119.2	4,119.4	0.00	0.00	0.00
10,600.0	90.72	90.00	6,296.1	-46.6	4,219.2	4,219.4	0.00	0.00	0.00
10,700.0	90.72	90.00	6,294.9	-46.6	4,319.2	4,319.4	0.00	0.00	0.00
10,800.0	90.72	90.00	6,293.6	-46.6	4,419.2	4,419.3	0.00	0.00	0.00
10,900.0	90.72	90.00	6,292.4	-46.6	4,519.2	4,519.3	0.00	0.00	0.00
11,000.0	90.72	90.00	6,291.1	-46.6	4,619.2	4,619.3	0.00	0.00	0.00
11,100.0	90.72	90.00	6,289.8	-46.6	4,719.1	4,719.3	0.00	0.00	0.00
11,200.0	90.72	90.00	6,288.6	-46.6	4,819.1	4,819.3	0.00	0.00	0.00
11,300.0	90.72	90.00	6,287.3	-46.6	4,919.1	4,919.3	0.00	0.00	0.00
11,400.0	90.72	90.00	6,286.1	-46.6	5,019.1	5,019.3	0.00	0.00	0.00
11,500.0	90.72	90.00	6,284.8	-46.6	5,119.1	5,119.3	0.00	0.00	0.00
11,600.0	90.72	90.00	6,283.6	-46.6	5,219.1	5,219.3	0.00	0.00	0.00
11,700.0	90.72	90.00	6,282.3	-46.6	5,319.1	5,319.3	0.00	0.00	0.00
11,800.0	90.72	90.00	6,281.0	-46.6	5,419.1	5,419.3	0.00	0.00	0.00
11,900.0	90.72	90.00	6,279.8	-46.6	5,519.1	5,519.2	0.00	0.00	0.00
12,000.0	90.72	90.00	6,278.5	-46.6	5,619.1	5,619.2	0.00	0.00	0.00
12,100.0	90.72	90.00	6,277.3	-46.6	5,719.1	5,719.2	0.00	0.00	0.00
12,200.0	90.72	90.00	6,276.0	-46.6	5,819.1	5,819.2	0.00	0.00	0.00
12,300.0	90.72	90.00	6,274.8	-46.6	5,919.1	5,919.2	0.00	0.00	0.00
12,400.0	90.72	90.00	6,273.5	-46.6	6,019.0	6,019.2	0.00	0.00	0.00
12,500.0	90.72	90.00	6,272.2	-46.6	6,119.0	6,119.2	0.00	0.00	0.00
12,600.0	90.72	90.00	6,271.0	-46.6	6,219.0	6,219.2	0.00	0.00	0.00
12,700.0	90.72	90.00	6,269.7	-46.6	6,319.0	6,319.2	0.00	0.00	0.00
12,800.0	90.72	90.00	6,268.5	-46.6	6,419.0	6,419.2	0.00	0.00	0.00
12,900.0	90.72	90.00	6,267.2	-46.6	6,519.0	6,519.2	0.00	0.00	0.00
13,000.0	90.72	90.00	6,266.0	-46.5	6,619.0	6,619.1	0.00	0.00	0.00
13,100.0	90.72	90.00	6,264.7	-46.5	6,719.0	6,719.1	0.00	0.00	0.00
13,200.0	90.72	90.00	6,263.5	-46.5	6,819.0	6,819.1	0.00	0.00	0.00
13,300.0	90.72	90.00	6,262.2	-46.5	6,919.0	6,919.1	0.00	0.00	0.00
13,400.0	90.72	90.00	6,260.9	-46.5	7,019.0	7,019.1	0.00	0.00	0.00
13,500.0	90.72	90.00	6,259.7	-46.5	7,119.0	7,119.1	0.00	0.00	0.00
13,600.0	90.72	90.00	6,258.4	-46.5	7,219.0	7,219.1	0.00	0.00	0.00
13,700.0	90.72	90.00	6,257.2	-46.5	7,318.9	7,319.1	0.00	0.00	0.00
13,800.0	90.72	90.00	6,255.9	-46.5	7,418.9	7,419.1	0.00	0.00	0.00
13,900.0	90.72	90.00	6,254.7	-46.5	7,518.9	7,519.1	0.00	0.00	0.00
14,000.0	90.72	90.00	6,253.4	-46.5	7,618.9	7,619.1	0.00	0.00	0.00
14,100.0	90.72	90.00	6,252.1	-46.5	7,718.9	7,719.0	0.00	0.00	0.00
14,200.0	90.72	90.00	6,250.9	-46.5	7,818.9	7,819.0	0.00	0.00	0.00
14,300.0	90.72	90.00	6,249.6	-46.5	7,918.9	7,919.0	0.00	0.00	0.00

# Bill Barrett Corp

## Planning Report

<b>Database:</b>	Compass	<b>Local Co-ordinate Reference:</b>	Well Anschutz Equus Farms 4-62-33-6457CH2
<b>Company:</b>	BILL BARRETT CORP	<b>TVD Reference:</b>	KB @ 4696.0ft (Original Well Elev)
<b>Project:</b>	WELD COUNTY, COLORADO	<b>MD Reference:</b>	KB @ 4696.0ft (Original Well Elev)
<b>Site:</b>	Anschutz Equus Farms 4-62-33_34 S2S2 Pad	<b>North Reference:</b>	True
<b>Well:</b>	Anschutz Equus Farms 4-62-33-6457CH2	<b>Survey Calculation Method:</b>	Minimum Curvature
<b>Wellbore:</b>	Wellbore #1		
<b>Design:</b>	Design #1		

Planned Survey										
Measured Depth (ft)	Inclination (°)	Azimuth (°)	Vertical Depth (ft)	+N/-S (ft)	+E/-W (ft)	Vertical Section (ft)	Dogleg Rate (°/100ft)	Build Rate (°/100ft)	Turn Rate (°/100ft)	
14,400.0	90.72	90.00	6,248.4	-46.5	8,018.9	8,019.0	0.00	0.00	0.00	
14,500.0	90.72	90.00	6,247.1	-46.5	8,118.9	8,119.0	0.00	0.00	0.00	
14,600.0	90.72	90.00	6,245.9	-46.5	8,218.9	8,219.0	0.00	0.00	0.00	
14,700.0	90.72	90.00	6,244.6	-46.5	8,318.9	8,319.0	0.00	0.00	0.00	
14,800.0	90.72	90.00	6,243.3	-46.5	8,418.9	8,419.0	0.00	0.00	0.00	
14,900.0	90.72	90.00	6,242.1	-46.5	8,518.8	8,519.0	0.00	0.00	0.00	
15,000.0	90.72	90.00	6,240.8	-46.5	8,618.8	8,619.0	0.00	0.00	0.00	
15,100.0	90.72	90.00	6,239.6	-46.5	8,718.8	8,719.0	0.00	0.00	0.00	
15,200.0	90.72	90.00	6,238.3	-46.5	8,818.8	8,818.9	0.00	0.00	0.00	
15,300.0	90.72	90.00	6,237.1	-46.5	8,918.8	8,918.9	0.00	0.00	0.00	
15,400.0	90.72	90.00	6,235.8	-46.5	9,018.8	9,018.9	0.00	0.00	0.00	
15,500.0	90.72	90.00	6,234.6	-46.5	9,118.8	9,118.9	0.00	0.00	0.00	
15,600.0	90.72	90.00	6,233.3	-46.5	9,218.8	9,218.9	0.00	0.00	0.00	
15,700.0	90.72	90.00	6,232.0	-46.5	9,318.8	9,318.9	0.00	0.00	0.00	
15,800.0	90.72	90.00	6,230.8	-46.5	9,418.8	9,418.9	0.00	0.00	0.00	
15,900.0	90.72	90.00	6,229.5	-46.5	9,518.8	9,518.9	0.00	0.00	0.00	
16,000.0	90.72	90.00	6,228.3	-46.5	9,618.8	9,618.9	0.00	0.00	0.00	
16,100.0	90.72	90.00	6,227.0	-46.5	9,718.8	9,718.9	0.00	0.00	0.00	
16,180.6	90.72	90.00	6,226.0	-46.5	9,799.3	9,799.4	0.00	0.00	0.00	
AEF 33-6457CH2 PBHL										

Casing Points					
Measured Depth (ft)	Vertical Depth (ft)	Name	Casing Diameter (")	Hole Diameter (")	
6,630.8	6,346.0	7" Csg	7	8-3/4	

Formations						
Measured Depth (ft)	Vertical Depth (ft)	Name	Lithology	Dip (°)	Dip Direction (°)	
	0.0	Fox Hills Base		-0.72	90.00	
5,180.5	5,172.0	Shannon		-0.72	90.00	
6,059.3	6,046.0	Sharon Springs		-0.72	90.00	
6,173.1	6,146.0	Niobrara		-0.72	90.00	
6,498.8	6,331.0	Top C Target		-0.72	90.00	
	6,361.0	Base C Target		-0.72	90.00	