



**Bill Barrett Corporation**

## COMPANY DETAILS: BILL BARRETT CORP

Calculation Method: Minimum Curvature  
Error System: ISCWSA  
Scan Method: Closest Approach 3D  
Error Surface: Elliptical Conic  
Warning Method: Error Ratio

## REFERENCE INFORMATION

Co-ordinate (N/E) Reference: Well Anschutz Equus Farms 4-62-33-4956CH2, True North  
Vertical (TVD) Reference: KB @ 4696.0ft (Original Well Elev)  
Section (VS) Reference: Slot - (0.0N, 0.0E)  
Measured Depth Reference: KB @ 4696.0ft (Original Well Elev)  
Calculation Method: Minimum Curvature

## WELL DETAILS: Anschutz Equus Farms 4-62-33-4956CH2

+N/-S	+E/-W	Northing	Easting	Latitude	Longitude
0.0	0.0	1341025.24	3324444.10	40° 15' 49.230 N	104° 20' 14.561 W

## SECTION DETAILS

Sec	MD	Inc	Azi	TVD	+N/-S	+E/-W	DLeg	TFace	VSec	Target
1	0.0	0.00	0.00	0.0	0.0	0.0	0.00	0.00	0.0	
2	1000.0	0.00	0.00	1000.0	0.0	0.0	0.00	0.00	0.0	
3	1361.2	7.22	333.44	1360.3	20.3	-10.2	2.00	333.44	-9.2	
4	5290.4	7.22	333.44	5258.3	462.4	-231.1	0.00	0.00	-208.1	
5	5651.7	0.00	90.00	5618.6	482.7	-241.3	2.00	180.00	-217.2	
6	5901.7	0.00	90.00	5868.6	482.7	-241.3	0.00	90.00	-217.2	
7	6657.4	90.69	90.00	6346.0	482.7	241.9	12.00	90.00	265.4	AEF 33-4956CH2 LP
8	16205.2	90.69	90.00	6231.0	482.4	9789.1	0.00	0.00	9800.9	AEF 33-4956CH2 PBHL

## PROJECT DETAILS: WELD COUNTY, COLORADO

Geodetic System: US State Plane 1983  
Datum: North American Datum 1983  
Ellipsoid: GRS 1980  
Zone: Colorado Northern Zone

## FORMATION TOP DETAILS

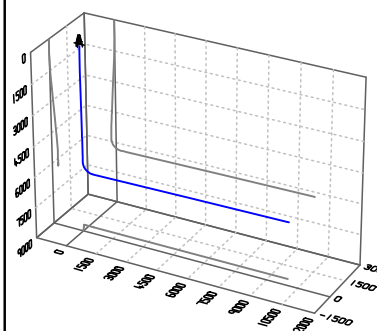
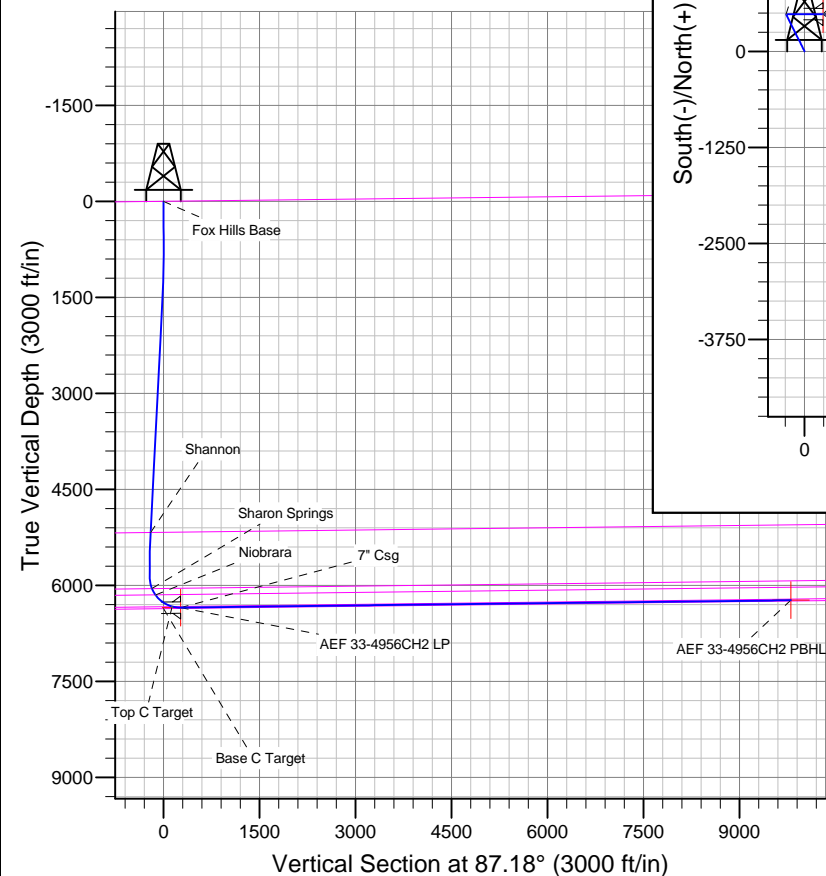
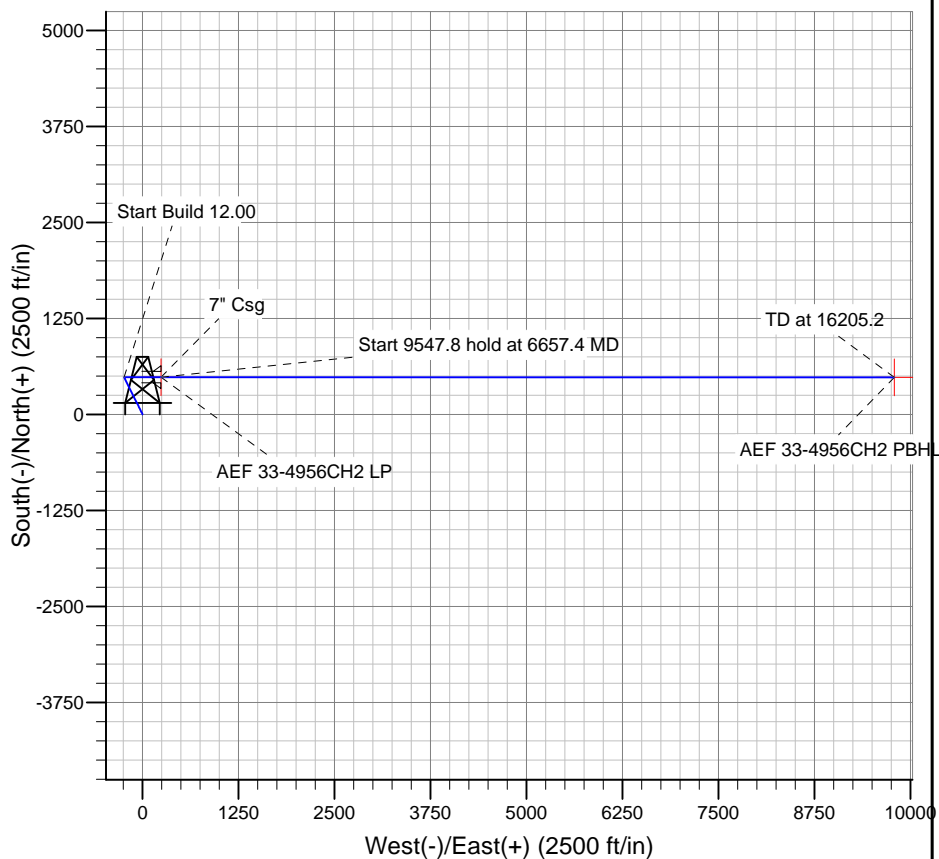
TVDPath	MDPath	Formation
		Base C Target
		Fox Hills Base
5174.7	5206.2	Shannon
6048.5	6086.1	Sharon Springs
6147.8	6200.0	Niobrara
6329.6	6526.2	Top C Target

## WELLBORE TARGET DETAILS

Name	TVD	+N/-S	+E/-W	Shape
AEF 33-4956CH2 PBHL	6231.0	482.4	9789.1	Point
AEF 33-4956CH2 LP	6346.0	482.7	241.9	Point

## CASING DETAILS

TVD	MD	Name	Size
6346.0	6657.4	7" Csg	7



Azimuths to True North  
Magnetic North: 8.25°

Magnetic Field  
Strength: 52814.2snT  
Dip Angle: 66.91°  
Date: 3/21/2014  
Model: IGRF2010

# **BILL BARRETT CORP**

**WELD COUNTY, COLORADO**

**Anschutz Equus Farms 4-62-33\_34 S2S2 Pad**

**Anschutz Equus Farms 4-62-33-4956CH2**

**Wellbore #1**

**Plan: Design #1**

## **Standard Planning Report**

**21 March, 2014**

# Bill Barrett Corp

## Planning Report

<b>Database:</b>	Compass	<b>Local Co-ordinate Reference:</b>	Well Anschutz Equus Farms 4-62-33-4956CH2
<b>Company:</b>	BILL BARRETT CORP	<b>TVD Reference:</b>	KB @ 4696.0ft (Original Well Elev)
<b>Project:</b>	WELD COUNTY, COLORADO	<b>MD Reference:</b>	KB @ 4696.0ft (Original Well Elev)
<b>Site:</b>	Anschutz Equus Farms 4-62-33_34 S2S2 Pad	<b>North Reference:</b>	True
<b>Well:</b>	Anschutz Equus Farms 4-62-33-4956CH2	<b>Survey Calculation Method:</b>	Minimum Curvature
<b>Wellbore:</b>	Wellbore #1		
<b>Design:</b>	Design #1		

<b>Project</b>	WELD COUNTY, COLORADO		
<b>Map System:</b>	US State Plane 1983	<b>System Datum:</b>	Mean Sea Level
<b>Geo Datum:</b>	North American Datum 1983		
<b>Map Zone:</b>	Colorado Northern Zone		

Site		Anschutz Equus Farms 4-62-33_34 S2S2 Pad			
Site Position:		Northing:	1,340,979.73ft	Latitude:	40° 15' 48.780 N
From:	Lat/Long	Easting:	3,324,445.53ft	Longitude:	104° 20' 14.550 W
Position Uncertainty:	0.0 ft	Slot Radius:	"	Grid Convergence:	0.75 °

Well	Anschutz Equus Farms 4-62-33-4956CH2					
Well Position	+N-S	45.5 ft	Northing:	1,341,025.24 ft	Latitude:	40° 15' 49.230 N
	+E-W	-0.8 ft	Easting:	3,324,444.10 ft	Longitude:	104° 20' 14.561 W
Position Uncertainty		0.0 ft	Wellhead Elevation:	ft	Ground Level:	4,680.0 ft

<b>Wellbore</b>	Wellbore #1				
<b>Magnetics</b>	<b>Model Name</b>	<b>Sample Date</b>	<b>Declination (°)</b>	<b>Dip Angle (°)</b>	<b>Field Strength (nT)</b>
	IGRF2010	3/21/2014	8.25	66.91	52,814

<b>Design</b>	Design #1			
<b>Audit Notes:</b>				
<b>Version:</b>	<b>Phase:</b>	PLAN	<b>Tie On Depth:</b>	0.0
<b>Vertical Section:</b>	<b>Depth From (TVD) (ft)</b>	<b>+N/-S (ft)</b>	<b>+E/-W (ft)</b>	<b>Direction (°)</b>
	0.0	0.0	0.0	87.18

<b>Plan Sections</b>										
Measured Depth (ft)	Inclination (°)	Azimuth (°)	Vertical Depth (ft)	+N/-S (ft)	+E/-W (ft)	Dogleg Rate (°/100ft)	Build Rate (°/100ft)	Turn Rate (°/100ft)	TFO (°)	Target
0.0	0.00	0.00	0.0	0.0	0.0	0.00	0.00	0.00	0.00	
1,000.0	0.00	0.00	1,000.0	0.0	0.0	0.00	0.00	0.00	0.00	
1,361.2	7.22	333.44	1,360.3	20.3	-10.2	2.00	2.00	0.00	333.44	
5,290.4	7.22	333.44	5,258.3	462.4	-231.1	0.00	0.00	0.00	0.00	
5,651.7	0.00	90.00	5,618.6	482.7	-241.3	2.00	-2.00	0.00	180.00	
5,901.7	0.00	90.00	5,868.6	482.7	-241.3	0.00	0.00	0.00	90.00	
6,657.4	90.69	90.00	6,346.0	482.7	241.9	12.00	12.00	0.00	90.00	AEF 33-4956CH2 L
16,205.2	90.69	90.00	6,231.0	482.4	9,789.1	0.00	0.00	0.00	0.00	AEF 33-4956CH2 F

# Bill Barrett Corp

## Planning Report

<b>Database:</b>	Compass	<b>Local Co-ordinate Reference:</b>	Well Anschutz Equus Farms 4-62-33-4956CH2
<b>Company:</b>	BILL BARRETT CORP	<b>TVD Reference:</b>	KB @ 4696.0ft (Original Well Elev)
<b>Project:</b>	WELD COUNTY, COLORADO	<b>MD Reference:</b>	KB @ 4696.0ft (Original Well Elev)
<b>Site:</b>	Anschutz Equus Farms 4-62-33_34 S2S2 Pad	<b>North Reference:</b>	True
<b>Well:</b>	Anschutz Equus Farms 4-62-33-4956CH2	<b>Survey Calculation Method:</b>	Minimum Curvature
<b>Wellbore:</b>	Wellbore #1		
<b>Design:</b>	Design #1		

Planned Survey										
Measured Depth (ft)	Inclination (°)	Azimuth (°)	Vertical Depth (ft)	+N/-S (ft)	+E/-W (ft)	Vertical Section (ft)	Dogleg Rate (°/100ft)	Build Rate (°/100ft)	Turn Rate (°/100ft)	
0.0	0.00	0.00	0.0	0.0	0.0	0.0	0.00	0.00	0.00	
100.0	0.00	0.00	100.0	0.0	0.0	0.0	0.00	0.00	0.00	
200.0	0.00	0.00	200.0	0.0	0.0	0.0	0.00	0.00	0.00	
300.0	0.00	0.00	300.0	0.0	0.0	0.0	0.00	0.00	0.00	
400.0	0.00	0.00	400.0	0.0	0.0	0.0	0.00	0.00	0.00	
500.0	0.00	0.00	500.0	0.0	0.0	0.0	0.00	0.00	0.00	
600.0	0.00	0.00	600.0	0.0	0.0	0.0	0.00	0.00	0.00	
700.0	0.00	0.00	700.0	0.0	0.0	0.0	0.00	0.00	0.00	
800.0	0.00	0.00	800.0	0.0	0.0	0.0	0.00	0.00	0.00	
900.0	0.00	0.00	900.0	0.0	0.0	0.0	0.00	0.00	0.00	
1,000.0	0.00	0.00	1,000.0	0.0	0.0	0.0	0.00	0.00	0.00	
1,100.0	2.00	333.44	1,100.0	1.6	-0.8	-0.7	2.00	2.00	0.00	
1,200.0	4.00	333.44	1,199.8	6.2	-3.1	-2.8	2.00	2.00	0.00	
1,300.0	6.00	333.44	1,299.5	14.0	-7.0	-6.3	2.00	2.00	0.00	
1,361.2	7.22	333.44	1,360.3	20.3	-10.2	-9.2	2.00	2.00	0.00	
1,400.0	7.22	333.44	1,398.7	24.7	-12.3	-11.1	0.00	0.00	0.00	
1,500.0	7.22	333.44	1,497.9	36.0	-18.0	-16.2	0.00	0.00	0.00	
1,600.0	7.22	333.44	1,597.1	47.2	-23.6	-21.2	0.00	0.00	0.00	
1,700.0	7.22	333.44	1,696.4	58.5	-29.2	-26.3	0.00	0.00	0.00	
1,800.0	7.22	333.44	1,795.6	69.7	-34.8	-31.4	0.00	0.00	0.00	
1,900.0	7.22	333.44	1,894.8	81.0	-40.5	-36.4	0.00	0.00	0.00	
2,000.0	7.22	333.44	1,994.0	92.2	-46.1	-41.5	0.00	0.00	0.00	
2,100.0	7.22	333.44	2,093.2	103.5	-51.7	-46.6	0.00	0.00	0.00	
2,200.0	7.22	333.44	2,192.4	114.7	-57.3	-51.6	0.00	0.00	0.00	
2,300.0	7.22	333.44	2,291.6	126.0	-63.0	-56.7	0.00	0.00	0.00	
2,400.0	7.22	333.44	2,390.8	137.2	-68.6	-61.7	0.00	0.00	0.00	
2,500.0	7.22	333.44	2,490.0	148.4	-74.2	-66.8	0.00	0.00	0.00	
2,600.0	7.22	333.44	2,589.2	159.7	-79.8	-71.9	0.00	0.00	0.00	
2,700.0	7.22	333.44	2,688.4	170.9	-85.4	-76.9	0.00	0.00	0.00	
2,800.0	7.22	333.44	2,787.6	182.2	-91.1	-82.0	0.00	0.00	0.00	
2,900.0	7.22	333.44	2,886.8	193.4	-96.7	-87.1	0.00	0.00	0.00	
3,000.0	7.22	333.44	2,986.0	204.7	-102.3	-92.1	0.00	0.00	0.00	
3,100.0	7.22	333.44	3,085.2	215.9	-107.9	-97.2	0.00	0.00	0.00	
3,200.0	7.22	333.44	3,184.4	227.2	-113.6	-102.2	0.00	0.00	0.00	
3,300.0	7.22	333.44	3,283.7	238.4	-119.2	-107.3	0.00	0.00	0.00	
3,400.0	7.22	333.44	3,382.9	249.7	-124.8	-112.4	0.00	0.00	0.00	
3,500.0	7.22	333.44	3,482.1	260.9	-130.4	-117.4	0.00	0.00	0.00	
3,600.0	7.22	333.44	3,581.3	272.2	-136.0	-122.5	0.00	0.00	0.00	
3,700.0	7.22	333.44	3,680.5	283.4	-141.7	-127.5	0.00	0.00	0.00	
3,800.0	7.22	333.44	3,779.7	294.7	-147.3	-132.6	0.00	0.00	0.00	
3,900.0	7.22	333.44	3,878.9	305.9	-152.9	-137.7	0.00	0.00	0.00	
4,000.0	7.22	333.44	3,978.1	317.2	-158.5	-142.7	0.00	0.00	0.00	
4,100.0	7.22	333.44	4,077.3	328.4	-164.2	-147.8	0.00	0.00	0.00	
4,200.0	7.22	333.44	4,176.5	339.7	-169.8	-152.9	0.00	0.00	0.00	
4,300.0	7.22	333.44	4,275.7	350.9	-175.4	-157.9	0.00	0.00	0.00	
4,400.0	7.22	333.44	4,374.9	362.2	-181.0	-163.0	0.00	0.00	0.00	
4,500.0	7.22	333.44	4,474.1	373.4	-186.7	-168.0	0.00	0.00	0.00	
4,600.0	7.22	333.44	4,573.3	384.7	-192.3	-173.1	0.00	0.00	0.00	
4,700.0	7.22	333.44	4,672.5	395.9	-197.9	-178.2	0.00	0.00	0.00	
4,800.0	7.22	333.44	4,771.7	407.2	-203.5	-183.2	0.00	0.00	0.00	
4,900.0	7.22	333.44	4,870.9	418.4	-209.1	-188.3	0.00	0.00	0.00	
5,000.0	7.22	333.44	4,970.2	429.7	-214.8	-193.4	0.00	0.00	0.00	
5,100.0	7.22	333.44	5,069.4	440.9	-220.4	-198.4	0.00	0.00	0.00	

# Bill Barrett Corp

## Planning Report

<b>Database:</b>	Compass	<b>Local Co-ordinate Reference:</b>	Well Anschutz Equus Farms 4-62-33-4956CH2
<b>Company:</b>	BILL BARRETT CORP	<b>TVD Reference:</b>	KB @ 4696.0ft (Original Well Elev)
<b>Project:</b>	WELD COUNTY, COLORADO	<b>MD Reference:</b>	KB @ 4696.0ft (Original Well Elev)
<b>Site:</b>	Anschutz Equus Farms 4-62-33_34 S2S2 Pad	<b>North Reference:</b>	True
<b>Well:</b>	Anschutz Equus Farms 4-62-33-4956CH2	<b>Survey Calculation Method:</b>	Minimum Curvature
<b>Wellbore:</b>	Wellbore #1		
<b>Design:</b>	Design #1		

Planned Survey									
Measured Depth (ft)	Inclination (°)	Azimuth (°)	Vertical Depth (ft)	+N/-S (ft)	+E/-W (ft)	Vertical Section (ft)	Dogleg Rate (°/100ft)	Build Rate (°/100ft)	Turn Rate (°/100ft)
5,200.0	7.22	333.44	5,168.6	452.2	-226.0	-203.5	0.00	0.00	0.00
5,206.2	7.22	333.44	5,174.7	452.9	-226.4	-203.8	0.00	0.00	0.00
<b>Shannon</b>									
5,290.4	7.22	333.44	5,258.3	462.4	-231.1	-208.1	0.00	0.00	0.00
5,300.0	7.03	333.44	5,267.8	463.4	-231.6	-208.5	2.00	-2.00	0.00
5,400.0	5.03	333.44	5,367.2	472.8	-236.3	-212.8	2.00	-2.00	0.00
5,500.0	3.03	333.44	5,467.0	479.1	-239.5	-215.6	2.00	-2.00	0.00
5,600.0	1.03	333.44	5,566.9	482.3	-241.1	-217.0	2.00	-2.00	0.00
5,651.7	0.00	90.00	5,618.6	482.7	-241.3	-217.2	2.00	-2.00	0.00
5,700.0	0.00	90.00	5,666.9	482.7	-241.3	-217.2	0.00	0.00	0.00
5,800.0	0.00	90.00	5,766.9	482.7	-241.3	-217.2	0.00	0.00	0.00
5,900.0	0.00	90.00	5,866.9	482.7	-241.3	-217.2	0.00	0.00	0.00
5,901.7	0.00	90.00	5,868.6	482.7	-241.3	-217.2	0.00	0.00	0.00
6,000.0	11.80	90.00	5,966.2	482.7	-231.2	-207.1	12.00	12.00	0.00
6,086.1	22.14	90.00	6,048.5	482.7	-206.1	-182.1	12.00	12.00	0.00
<b>Sharon Springs</b>									
6,100.0	23.80	90.00	6,061.2	482.7	-200.7	-176.7	12.00	12.00	0.00
6,200.0	35.79	90.00	6,147.8	482.7	-151.1	-127.1	12.00	12.00	0.00
<b>Niobrara</b>									
6,300.0	47.80	90.00	6,222.3	482.7	-84.5	-60.7	12.00	12.00	0.00
6,400.0	59.80	90.00	6,281.2	482.7	-4.0	19.8	12.00	12.00	0.00
6,500.0	71.80	90.00	6,322.1	482.7	87.1	110.7	12.00	12.00	0.00
6,526.2	74.95	90.00	6,329.6	482.7	112.2	135.8	12.00	12.00	0.00
<b>Top C Target</b>									
6,600.0	83.80	90.00	6,343.2	482.7	184.6	208.2	12.00	12.00	0.00
6,657.4	90.69	90.00	6,346.0	482.7	241.9	265.4	11.99	11.99	0.00
<b>7" Csg - AEF 33-4956CH2 LP</b>									
6,700.0	90.69	90.00	6,345.5	482.7	284.5	307.9	0.01	0.01	0.00
6,800.0	90.69	90.00	6,344.3	482.7	384.5	407.8	0.00	0.00	0.00
6,900.0	90.69	90.00	6,343.1	482.7	484.5	507.7	0.00	0.00	0.00
7,000.0	90.69	90.00	6,341.9	482.7	584.5	607.5	0.00	0.00	0.00
7,100.0	90.69	90.00	6,340.7	482.7	684.5	707.4	0.00	0.00	0.00
7,200.0	90.69	90.00	6,339.5	482.7	784.5	807.3	0.00	0.00	0.00
7,300.0	90.69	90.00	6,338.3	482.7	884.5	907.2	0.00	0.00	0.00
7,400.0	90.69	90.00	6,337.1	482.7	984.5	1,007.0	0.00	0.00	0.00
7,500.0	90.69	90.00	6,335.9	482.7	1,084.5	1,106.9	0.00	0.00	0.00
7,600.0	90.69	90.00	6,334.6	482.7	1,184.5	1,206.8	0.00	0.00	0.00
7,700.0	90.69	90.00	6,333.4	482.7	1,284.4	1,306.6	0.00	0.00	0.00
7,800.0	90.69	90.00	6,332.2	482.7	1,384.4	1,406.5	0.00	0.00	0.00
7,900.0	90.69	90.00	6,331.0	482.7	1,484.4	1,506.4	0.00	0.00	0.00
8,000.0	90.69	90.00	6,329.8	482.7	1,584.4	1,606.3	0.00	0.00	0.00
8,100.0	90.69	90.00	6,328.6	482.7	1,684.4	1,706.1	0.00	0.00	0.00
8,200.0	90.69	90.00	6,327.4	482.7	1,784.4	1,806.0	0.00	0.00	0.00
8,300.0	90.69	90.00	6,326.2	482.6	1,884.4	1,905.9	0.00	0.00	0.00
8,400.0	90.69	90.00	6,325.0	482.6	1,984.4	2,005.7	0.00	0.00	0.00
8,500.0	90.69	90.00	6,323.8	482.6	2,084.4	2,105.6	0.00	0.00	0.00
8,600.0	90.69	90.00	6,322.6	482.6	2,184.4	2,205.5	0.00	0.00	0.00
8,700.0	90.69	90.00	6,321.4	482.6	2,284.4	2,305.4	0.00	0.00	0.00
8,800.0	90.69	90.00	6,320.2	482.6	2,384.4	2,405.2	0.00	0.00	0.00
8,900.0	90.69	90.00	6,319.0	482.6	2,484.4	2,505.1	0.00	0.00	0.00
9,000.0	90.69	90.00	6,317.8	482.6	2,584.3	2,605.0	0.00	0.00	0.00
9,100.0	90.69	90.00	6,316.6	482.6	2,684.3	2,704.8	0.00	0.00	0.00

# Bill Barrett Corp

## Planning Report

<b>Database:</b>	Compass	<b>Local Co-ordinate Reference:</b>	Well Anschutz Equus Farms 4-62-33-4956CH2
<b>Company:</b>	BILL BARRETT CORP	<b>TVD Reference:</b>	KB @ 4696.0ft (Original Well Elev)
<b>Project:</b>	WELD COUNTY, COLORADO	<b>MD Reference:</b>	KB @ 4696.0ft (Original Well Elev)
<b>Site:</b>	Anschutz Equus Farms 4-62-33_34 S2S2 Pad	<b>North Reference:</b>	True
<b>Well:</b>	Anschutz Equus Farms 4-62-33-4956CH2	<b>Survey Calculation Method:</b>	Minimum Curvature
<b>Wellbore:</b>	Wellbore #1		
<b>Design:</b>	Design #1		

Planned Survey									
Measured Depth (ft)	Inclination (°)	Azimuth (°)	Vertical Depth (ft)	+N/-S (ft)	+E/-W (ft)	Vertical Section (ft)	Dogleg Rate (°/100ft)	Build Rate (°/100ft)	Turn Rate (°/100ft)
9,200.0	90.69	90.00	6,315.4	482.6	2,784.3	2,804.7	0.00	0.00	0.00
9,300.0	90.69	90.00	6,314.2	482.6	2,884.3	2,904.6	0.00	0.00	0.00
9,400.0	90.69	90.00	6,313.0	482.6	2,984.3	3,004.5	0.00	0.00	0.00
9,500.0	90.69	90.00	6,311.8	482.6	3,084.3	3,104.3	0.00	0.00	0.00
9,600.0	90.69	90.00	6,310.6	482.6	3,184.3	3,204.2	0.00	0.00	0.00
9,700.0	90.69	90.00	6,309.4	482.6	3,284.3	3,304.1	0.00	0.00	0.00
9,800.0	90.69	90.00	6,308.1	482.6	3,384.3	3,403.9	0.00	0.00	0.00
9,900.0	90.69	90.00	6,306.9	482.6	3,484.3	3,503.8	0.00	0.00	0.00
10,000.0	90.69	90.00	6,305.7	482.6	3,584.3	3,603.7	0.00	0.00	0.00
10,100.0	90.69	90.00	6,304.5	482.6	3,684.3	3,703.6	0.00	0.00	0.00
10,200.0	90.69	90.00	6,303.3	482.6	3,784.3	3,803.4	0.00	0.00	0.00
10,300.0	90.69	90.00	6,302.1	482.6	3,884.3	3,903.3	0.00	0.00	0.00
10,400.0	90.69	90.00	6,300.9	482.6	3,984.2	4,003.2	0.00	0.00	0.00
10,500.0	90.69	90.00	6,299.7	482.6	4,084.2	4,103.0	0.00	0.00	0.00
10,600.0	90.69	90.00	6,298.5	482.6	4,184.2	4,202.9	0.00	0.00	0.00
10,700.0	90.69	90.00	6,297.3	482.6	4,284.2	4,302.8	0.00	0.00	0.00
10,800.0	90.69	90.00	6,296.1	482.6	4,384.2	4,402.7	0.00	0.00	0.00
10,900.0	90.69	90.00	6,294.9	482.6	4,484.2	4,502.5	0.00	0.00	0.00
11,000.0	90.69	90.00	6,293.7	482.6	4,584.2	4,602.4	0.00	0.00	0.00
11,100.0	90.69	90.00	6,292.5	482.6	4,684.2	4,702.3	0.00	0.00	0.00
11,200.0	90.69	90.00	6,291.3	482.6	4,784.2	4,802.1	0.00	0.00	0.00
11,300.0	90.69	90.00	6,290.1	482.6	4,884.2	4,902.0	0.00	0.00	0.00
11,400.0	90.69	90.00	6,288.9	482.6	4,984.2	5,001.9	0.00	0.00	0.00
11,500.0	90.69	90.00	6,287.7	482.6	5,084.2	5,101.8	0.00	0.00	0.00
11,600.0	90.69	90.00	6,286.5	482.6	5,184.2	5,201.6	0.00	0.00	0.00
11,700.0	90.69	90.00	6,285.3	482.6	5,284.2	5,301.5	0.00	0.00	0.00
11,800.0	90.69	90.00	6,284.1	482.6	5,384.1	5,401.4	0.00	0.00	0.00
11,900.0	90.69	90.00	6,282.9	482.6	5,484.1	5,501.2	0.00	0.00	0.00
12,000.0	90.69	90.00	6,281.7	482.6	5,584.1	5,601.1	0.00	0.00	0.00
12,100.0	90.69	90.00	6,280.4	482.5	5,684.1	5,701.0	0.00	0.00	0.00
12,200.0	90.69	90.00	6,279.2	482.5	5,784.1	5,800.9	0.00	0.00	0.00
12,300.0	90.69	90.00	6,278.0	482.5	5,884.1	5,900.7	0.00	0.00	0.00
12,400.0	90.69	90.00	6,276.8	482.5	5,984.1	6,000.6	0.00	0.00	0.00
12,500.0	90.69	90.00	6,275.6	482.5	6,084.1	6,100.5	0.00	0.00	0.00
12,600.0	90.69	90.00	6,274.4	482.5	6,184.1	6,200.3	0.00	0.00	0.00
12,700.0	90.69	90.00	6,273.2	482.5	6,284.1	6,300.2	0.00	0.00	0.00
12,800.0	90.69	90.00	6,272.0	482.5	6,384.1	6,400.1	0.00	0.00	0.00
12,900.0	90.69	90.00	6,270.8	482.5	6,484.1	6,500.0	0.00	0.00	0.00
13,000.0	90.69	90.00	6,269.6	482.5	6,584.1	6,599.8	0.00	0.00	0.00
13,100.0	90.69	90.00	6,268.4	482.5	6,684.1	6,699.7	0.00	0.00	0.00
13,200.0	90.69	90.00	6,267.2	482.5	6,784.0	6,799.6	0.00	0.00	0.00
13,300.0	90.69	90.00	6,266.0	482.5	6,884.0	6,899.4	0.00	0.00	0.00
13,400.0	90.69	90.00	6,264.8	482.5	6,984.0	6,999.3	0.00	0.00	0.00
13,500.0	90.69	90.00	6,263.6	482.5	7,084.0	7,099.2	0.00	0.00	0.00
13,600.0	90.69	90.00	6,262.4	482.5	7,184.0	7,199.1	0.00	0.00	0.00
13,700.0	90.69	90.00	6,261.2	482.5	7,284.0	7,298.9	0.00	0.00	0.00
13,800.0	90.69	90.00	6,260.0	482.5	7,384.0	7,398.8	0.00	0.00	0.00
13,900.0	90.69	90.00	6,258.8	482.5	7,484.0	7,498.7	0.00	0.00	0.00
14,000.0	90.69	90.00	6,257.6	482.5	7,584.0	7,598.5	0.00	0.00	0.00
14,100.0	90.69	90.00	6,256.4	482.5	7,684.0	7,698.4	0.00	0.00	0.00
14,200.0	90.69	90.00	6,255.2	482.5	7,784.0	7,798.3	0.00	0.00	0.00
14,300.0	90.69	90.00	6,253.9	482.5	7,884.0	7,898.2	0.00	0.00	0.00
14,400.0	90.69	90.00	6,252.7	482.5	7,984.0	7,998.0	0.00	0.00	0.00

# Bill Barrett Corp

## Planning Report

<b>Database:</b>	Compass	<b>Local Co-ordinate Reference:</b>	Well Anschutz Equus Farms 4-62-33-4956CH2
<b>Company:</b>	BILL BARRETT CORP	<b>TVD Reference:</b>	KB @ 4696.0ft (Original Well Elev)
<b>Project:</b>	WELD COUNTY, COLORADO	<b>MD Reference:</b>	KB @ 4696.0ft (Original Well Elev)
<b>Site:</b>	Anschutz Equus Farms 4-62-33_34 S2S2 Pad	<b>North Reference:</b>	True
<b>Well:</b>	Anschutz Equus Farms 4-62-33-4956CH2	<b>Survey Calculation Method:</b>	Minimum Curvature
<b>Wellbore:</b>	Wellbore #1		
<b>Design:</b>	Design #1		

Planned Survey										
Measured Depth (ft)	Inclination (°)	Azimuth (°)	Vertical Depth (ft)	+N/-S (ft)	+E/-W (ft)	Vertical Section (ft)	Dogleg Rate (°/100ft)	Build Rate (°/100ft)	Turn Rate (°/100ft)	
14,500.0	90.69	90.00	6,251.5	482.5	8,083.9	8,097.9	0.00	0.00	0.00	
14,600.0	90.69	90.00	6,250.3	482.5	8,183.9	8,197.8	0.00	0.00	0.00	
14,700.0	90.69	90.00	6,249.1	482.5	8,283.9	8,297.6	0.00	0.00	0.00	
14,800.0	90.69	90.00	6,247.9	482.5	8,383.9	8,397.5	0.00	0.00	0.00	
14,900.0	90.69	90.00	6,246.7	482.5	8,483.9	8,497.4	0.00	0.00	0.00	
15,000.0	90.69	90.00	6,245.5	482.5	8,583.9	8,597.3	0.00	0.00	0.00	
15,100.0	90.69	90.00	6,244.3	482.5	8,683.9	8,697.1	0.00	0.00	0.00	
15,200.0	90.69	90.00	6,243.1	482.5	8,783.9	8,797.0	0.00	0.00	0.00	
15,300.0	90.69	90.00	6,241.9	482.5	8,883.9	8,896.9	0.00	0.00	0.00	
15,400.0	90.69	90.00	6,240.7	482.5	8,983.9	8,996.7	0.00	0.00	0.00	
15,500.0	90.69	90.00	6,239.5	482.5	9,083.9	9,096.6	0.00	0.00	0.00	
15,600.0	90.69	90.00	6,238.3	482.5	9,183.9	9,196.5	0.00	0.00	0.00	
15,700.0	90.69	90.00	6,237.1	482.5	9,283.9	9,296.4	0.00	0.00	0.00	
15,800.0	90.69	90.00	6,235.9	482.5	9,383.9	9,396.2	0.00	0.00	0.00	
15,900.0	90.69	90.00	6,234.7	482.4	9,483.8	9,496.1	0.00	0.00	0.00	
16,000.0	90.69	90.00	6,233.5	482.4	9,583.8	9,596.0	0.00	0.00	0.00	
16,100.0	90.69	90.00	6,232.3	482.4	9,683.8	9,695.8	0.00	0.00	0.00	
16,200.0	90.69	90.00	6,231.1	482.4	9,783.8	9,795.7	0.00	0.00	0.00	
16,205.2	90.69	90.00	6,231.0	482.4	9,789.1	9,800.9	0.00	0.00	0.00	
AEF 33-4956CH2 PBHL										

Casing Points					
Measured Depth (ft)	Vertical Depth (ft)	Name	Casing Diameter (")	Hole Diameter (")	
6,657.4	6,346.0	7" Csg	7	8-3/4	

Formations						
Measured Depth (ft)	Vertical Depth (ft)	Name	Lithology	Dip (°)	Dip Direction (°)	
	0.0	Fox Hills Base		-0.69	90.00	
5,206.2	5,172.0	Shannon		-0.69	90.00	
6,086.1	6,046.0	Sharon Springs		-0.69	90.00	
6,200.0	6,146.0	Niobrara		-0.69	90.00	
6,526.2	6,331.0	Top C Target		-0.69	90.00	
	6,361.0	Base C Target		-0.69	90.00	