

LEGEND:

 PROPOSED LOCATION



EE3 LLC.

SPICER-FRONTIER #03-32H ON EXISTING
SPICER #03-32H PAD
SECTION 32, T7N, R80W, 6th P.M.
607' FSL 786' FWL



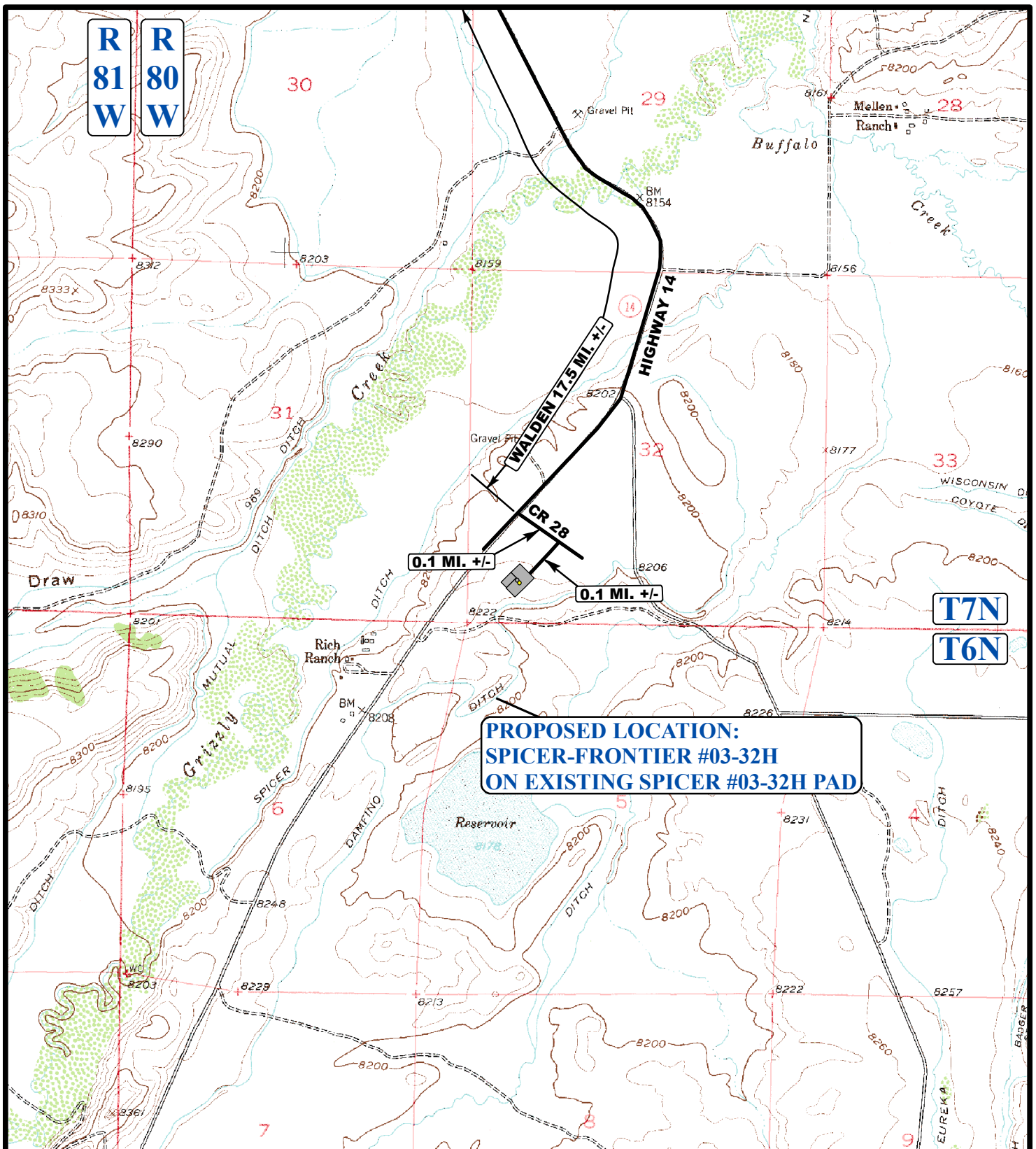
Uintah Engineering & Land Surveying
85 South 200 East Vernal, Utah 84078
(435) 789-1017 * FAX (435) 789-1813

**ACCESS ROAD
MAP**

10 18 13
MONTH DAY YEAR

SCALE: 1:100,000 DRAWN BY: J.C. REVISED: 00-00-00





LEGEND:

EXISTING ROADS



EE3 LLC.

**SPICER-FRONTIER #03-32H ON EXISTING
SPICER #03-32H PAD
SECTION 32, T7N, R80W, 6th P.M.
607' FSL 786' FWL**



Uintah Engineering & Land Surveying
85 South 200 East Vernal, Utah 84078
(435) 789-1017 * FAX (435) 789-1813

ACCESS ROAD MAP	10	19	13	B TOPO
	MONTH	DAY	YEAR	
SCALE: 1"=2000'		DRAWN BY: J.C.		REVISED: 00-00-00