



Kerr-McGee Oil & Gas Onshore LP

A subsidiary of Anadarko Petroleum Corporation

1099 18th Street
Denver, CO 80202
720-929-6000

March 13, 2014

Department of Natural Resources
Oil and Gas Conservation Commission
The Chancery Building
1120 Lincoln St., Suite 801
Denver, CO 80203

Re: **30 Day Certification Letter - 318A.e**
SICKLER 28N-34HZ
Township 2 North, Range 67 West, Section 34: SW/4SE/4
Unit Spacing: 01N-67W-Sec 03 NW/4NE/4, NE/4NW/4
02N-67W-Sec 27 SW/4SE/4, SE/4SW/4
02N-67W-Sec 34 E/2W/2, W/2E/2
Weld County, Colorado


Ladies/Gentlemen:

Kerr McGee Oil and Gas Onshore LP ("KMG") hereby certify to the Director that KMG owns one-hundred percent (100%) of the mineral rights in the proposed spacing unit. Therefore, KMG respectfully requests the Director to approve the boundary well.

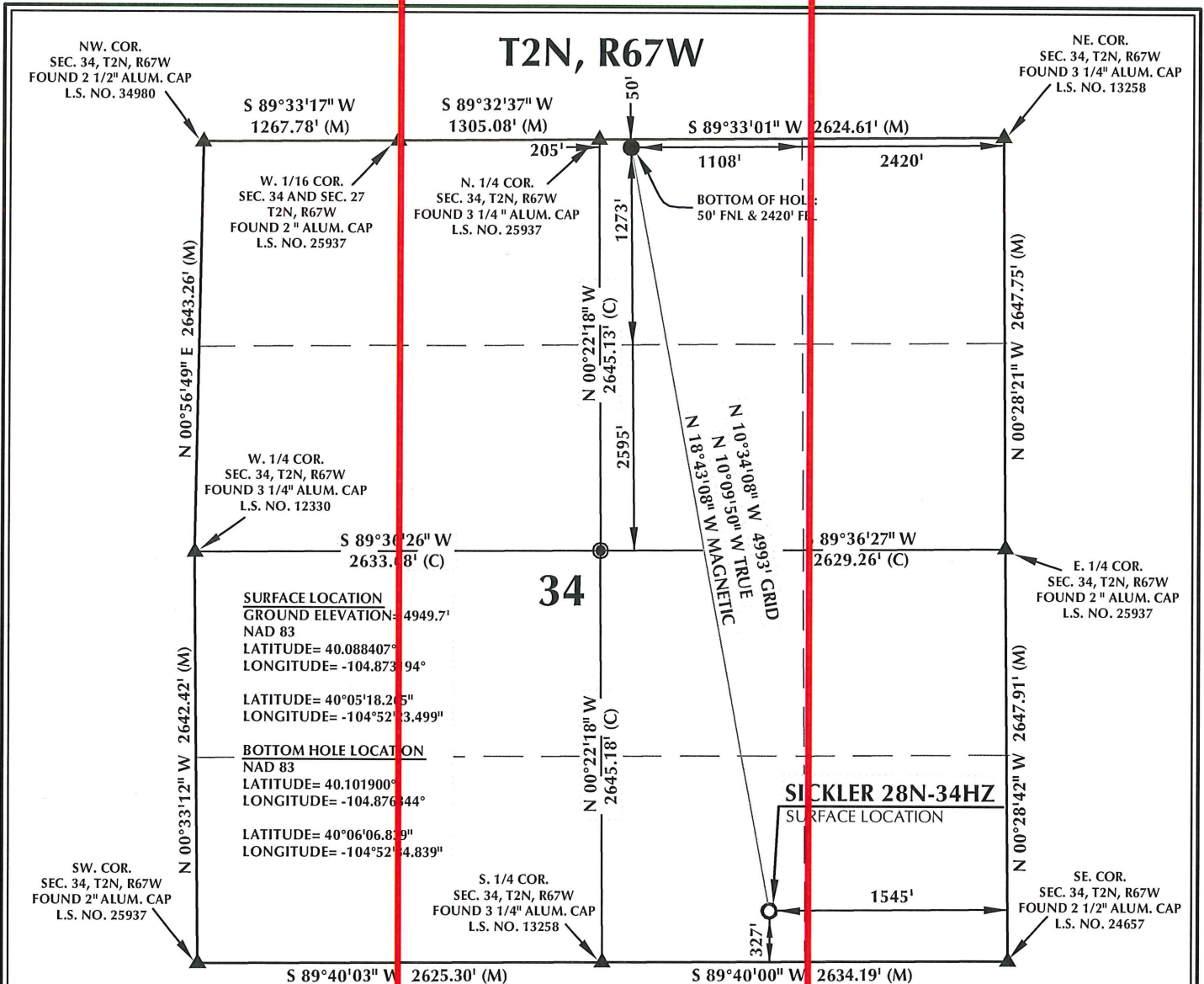
If you have any questions or issues regarding this permit, please contact Cheryl Light at (720) 929-6461.

Very truly yours,

KERR-McGEE OIL AND GAS ONSHORE LP


Lauren Kucera
Regulatory Analyst II

PROPOSED SPACING UNIT



34

SURFACE LOCATION
 GROUND ELEVATION= 4949.7'
 NAD 83
 LATITUDE= 40.088407°
 LONGITUDE= -104.873194°

LATITUDE= 40°05'18.25"
 LONGITUDE= -104°52'33.499"

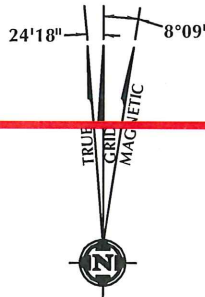
BOTTOM HOLE LOCATION
 NAD 83
 LATITUDE= 40.101900°
 LONGITUDE= -104.876444°

LATITUDE= 40°06'06.839"
 LONGITUDE= -104°52'34.839"

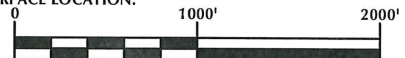
SICKLER 28N-34HZ
 SURFACE LOCATION

NOTES:

- ▲ INDICATES FOUND SECTION CORNER
- ◎ INDICATES CALCULATED CORNER
- ELEVATION BASED ON NAVD88 (GEOID09)
- BASIS OF BEARING DERIVED FROM COLORADO COORDINATE SYSTEM 1983 NORTH ZONE UNLESS OTHERWISE NOTED.
- ALL MEASURED DISTANCES ARE GRID.
- COMBINED SCALE FACTOR: .99972779
- OPERATOR: ROB WILSON / PDOP = 1.6
- SURFACE USE OF LOCATION IS FLOOD IRRIGATED.
- SEE ADDENDUM TO WELL LOCATION CERTIFICATE FOR EXISTING IMPROVEMENTS WITHIN 500' OF THE WELL PAD.
- WELL FOOTAGES ARE MEASURED AT RIGHT ANGLES TO THE SECTION LINES.
- THE BOTTOM OF HOLE BEARS N10°34'08"W 4993' FROM THE SURFACE LOCATION.



NOTE:
 MAGNETIC NORTH IS CURRENT AS OF 12/8/2013.
 MAGNETIC NORTH CHANGES WEST 0°08' PER YEAR.



SCALE: 1" = 1000'

CERTIFICATE OF SURVEYOR:

THIS IS TO CERTIFY THAT THE ABOVE PLAT WAS PREPARED FROM FIELD NOTES OF ACTUAL SURVEY MADE BY ME OR UNDER MY SUPERVISION AND THAT THE SAME ARE TRUE AND CORRECT TO THE BEST OF MY KNOWLEDGE AND BELIEF. THIS CERTIFICATE DOES NOT REPRESENT A LAND SURVEY PLAT OR IMPROVEMENT SURVEY PLAT AS DEFINED BY C.S. 38-51-302 AND CANNOT BE RELIED UPON TO DETERMINE OWNERSHIP.

Benjamin J. Reenders
 BENJAMIN J. REENDERS
 PROFESSIONAL LAND SURVEYOR
 COLORADO REGISTRATION NUMBER 38305

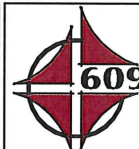
12/10/13

NOTICE
 ACCORDING TO COLORADO STATE LAW YOU MUST COMMENCE ANY LEGAL ACTION BASED UPON ANY DEFECT IN THIS SURVEY WITHIN THREE YEARS AFTER YOU FIRST DISCOVER SUCH DEFECT. IN NO EVENT MAY ANY ACTION BASED UPON ANY DEFECT IN THIS SURVEY BE COMMENCED MORE THAN TEN YEARS FROM THE DATE ON THE CERTIFICATION SHOWN HEREON.

WELL PAD - SICKLER 27N-34HZ

SICKLER 28N-34HZ
WELL LOCATION CERTIFICATE
 327' FSL & 1545' FEL SWSE (SURFACE)
 50' FNL & 2420' FEL NWNE (BOTTOM)
 LOCATED IN SECTION 34
 T2N, R67W, 6TH P.M.
 WELD COUNTY, COLORADO

**Kerr-McGee Oil &
 Gas Onshore L.P.**
 1099 18th Street
 Denver, Colorado 80202



CONSULTING, LLC

SHERIDAN OFFICE **LOVELAND OFFICE**
 2155 North Main Street 1635 Foxtrail Drive, Suite 204
 Sheridan, Wyoming 82801 Loveland, Colorado 80538
 Phone 307-674-6069 Phone 970-776-4331

DRAFTED BY:	LMO	CHECKED BY:	BJR
DATE DRAFTED:	12/10/13	DATE SURVEYED:	11/19/13
REVISED:		FILE NAME:	13-105