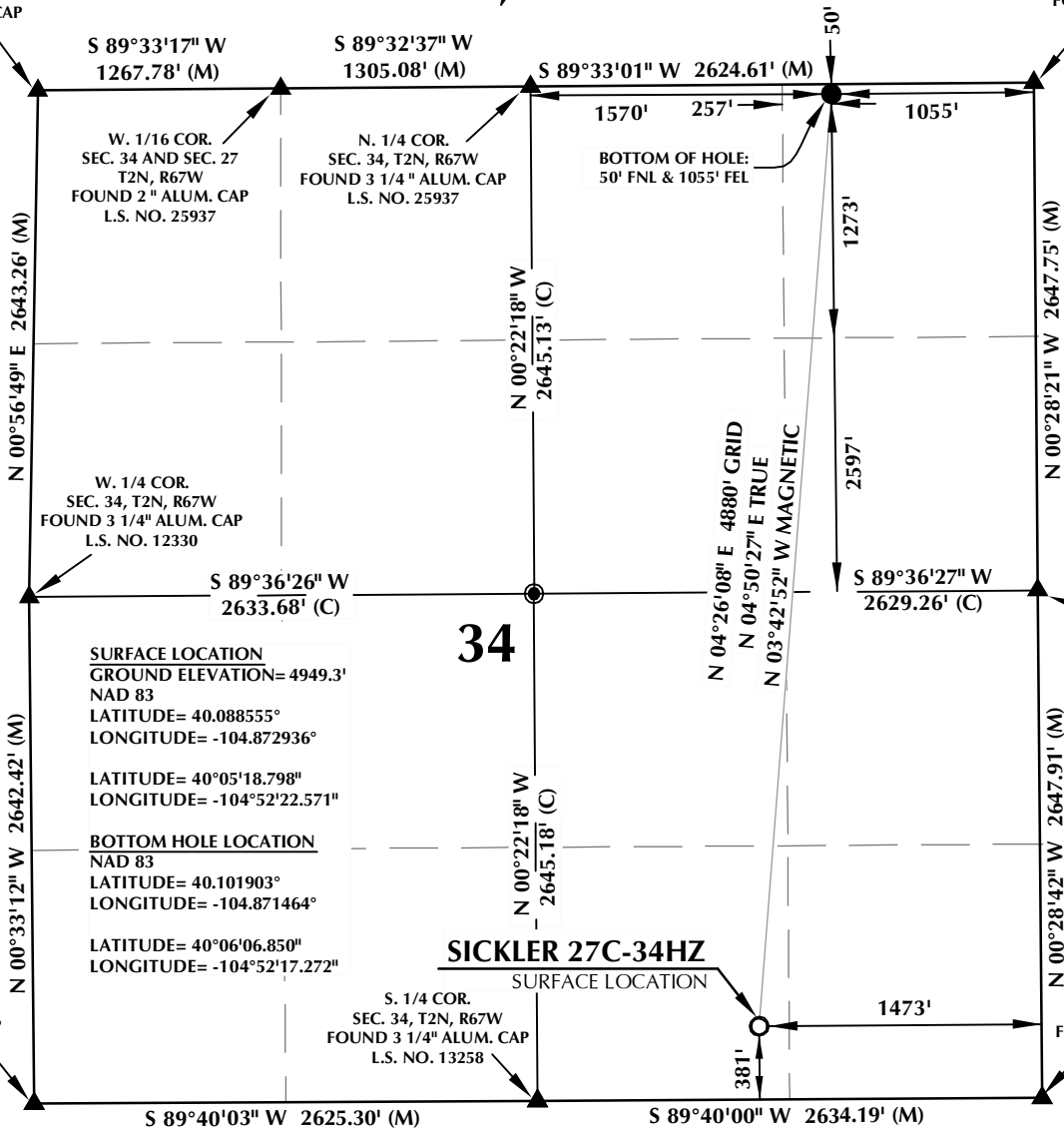


T2N, R67W

NW. COR.
SEC. 34, T2N, R67W
FOUND 2 1/2" ALUM. CAP
L.S. NO. 34980

NE. COR.
SEC. 34, T2N, R67W
FOUND 3 1/4" ALUM. CAP
L.S. NO. 13258



34

SURFACE LOCATION
GROUND ELEVATION= 4949.3'
NAD 83
LATITUDE= 40.08855°
LONGITUDE= -104.872936°

LATITUDE= 40°05'18.798"
LONGITUDE= -104°52'22.571"

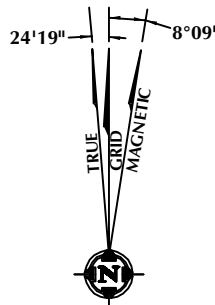
BOTTOM HOLE LOCATION
NAD 83
LATITUDE= 40.101903°
LONGITUDE= -104.871464°

LATITUDE= 40°06'06.850"
LONGITUDE= -104°52'17.272"

SICKLER 27C-34HZ
SURFACE LOCATION

NOTES:

- ▲ INDICATES FOUND SECTION CORNER
- INDICATES CALCULATED CORNER
- ELEVATION BASED ON NAVD88 (GEOID09)
- BASIS OF BEARING DERIVED FROM COLORADO COORDINATE SYSTEM 1983 NORTH ZONE UNLESS OTHERWISE NOTED.
- ALL MEASURED DISTANCES ARE GRID.
COMBINED SCALE FACTOR: .99972779
- OPERATOR: ROB WILSON / PDOP = 1.6
- SURFACE USE OF LOCATION IS FLOOD IRRIGATED.
- SEE ADDENDUM TO WELL LOCATION CERTIFICATE FOR EXISTING IMPROVEMENTS WITHIN 500' OF THE WELL PAD.
- WELL FOOTAGES ARE MEASURED AT RIGHT ANGLES TO THE SECTION LINES.
- THE BOTTOM OF HOLE BEARS N04°26'08"E 4880' FROM THE SURFACE LOCATION.



NOTE:
MAGNETIC NORTH IS CURRENT AS OF 12/8/2013.
MAGNETIC NORTH CHANGES WEST 0°08' PER YEAR.



SCALE: 1" = 1000'

CERTIFICATE OF SURVEYOR:

THIS IS TO CERTIFY THAT THE ABOVE PLAT WAS PREPARED FROM FIELD NOTES OF ACTUAL SURVEY MADE BY ME OR UNDER MY SUPERVISION AND THAT THE SAME ARE TRUE AND CORRECT TO THE BEST OF MY KNOWLEDGE AND BELIEF. THIS CERTIFICATE DOES NOT REPRESENT A LAND SURVEY PLAT OR IMPROVEMENT SURVEY PLAT AS DEFINED BY C.S. 38-51-102 AND CANNOT BE RELIED UPON TO DETERMINE OWNERSHIP.

Benjamin J. Reenders
PROFESSIONAL LAND SURVEYOR
12/10/13

BENJAMIN J. REENDERS
PROFESSIONAL LAND SURVEYOR
COLORADO REGISTRATION NUMBER 43363

NOTICE:
ACCORDING TO COLORADO STATE LAW YOU MUST COMMENCE ANY LEGAL ACTION BASED UPON ANY DEFECT IN THIS SURVEY WITHIN THREE YEARS AFTER YOU FIRST DISCOVER SUCH DEFECT. IN NO EVENT MAY ANY ACTION BASED UPON ANY DEFECT IN THIS SURVEY BE COMMENCED MORE THAN TEN YEARS FROM THE DATE ON THE CERTIFICATION SHOWN HEREON.

WELL PAD - SICKLER 27N-34HZ

SICKLER 27C-34HZ
WELL LOCATION CERTIFICATE
381' FSL & 1473' FEL SWSE (SURFACE)
50' FNL & 1055' FEL NENE (BOTTOM)
LOCATED IN SECTION 34
T2N, R67W, 6TH P.M.
WELD COUNTY, COLORADO

**Kerr-McGee Oil &
Gas Onshore L.P.**
1099 18th Street
Denver, Colorado 80202



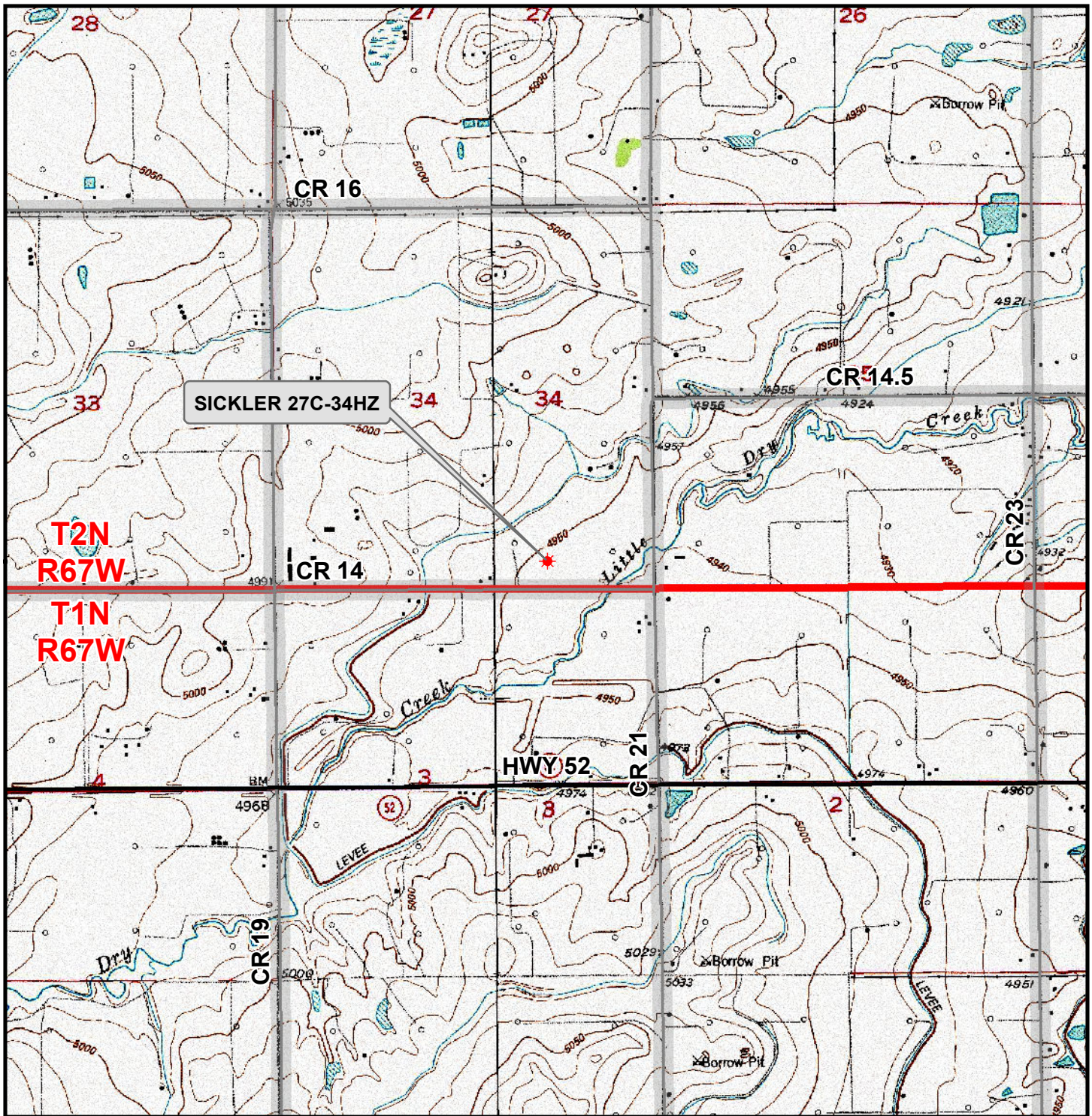
CONSULTING, LLC

SHERIDAN OFFICE
2155 North Main Street
Sheridan, Wyoming 82801
Phone 307-674-0609

LOVELAND OFFICE
1635 Foxtrail Drive, Suite 204
Loveland, Colorado 80538
Phone 970-776-4331

DRAFTED BY:	LMO	CHECKED BY:	BJR
DATE DRAFTED:	12/10/13	DATE SURVEYED:	11/19/13
REVISED:		FILE NAME:	13-105

K:\ANADARKO\2013\2013_105_COLORADO_T2N67W_SEC34\GIS\Maps_ABC\Sickler 27N-34HZ\Sickler 27C-34HZ.mxd 12/10/2013 9:20:12 AM



Legend

- ★ Well - Fee - Proposed
- ==== Road - Primitive - Existing
- Road - Improved - Existing
- Road - County - Existing
- Road - Highway - Existing

WELL PAD - SICKLER 27N-34HZ
GENERAL LOCATION MAP
SICKLER 27C-34HZ
LOCATED IN SECTION 34
T2N, R67W, 6th P.M.
WELD COUNTY, COLORADO

Kerr-McGee Oil & Gas Onshore L.P.
 1099 18th Street
 Denver, Colorado 80202



CONSULTING, LLC
 SHERIDAN OFFICE: 2155 North Main Street, Sheridan, Wyoming 82801, Phone 307-674-0609
 LOVELAND OFFICE: 1635 Foxtail Drive, Suite 204, Loveland, Colorado 80538, Phone 970-776-4331

SCALE: 1" = 2,000ft	NAD83 CO-Nft
DRAWN: JELo	DATE: 10 Dec 2013
REVISED:	DATE:

