

KERR-MCGEE OIL & GAS ONSHORE LP

Location: COLORADO Slot: SLOT#12 SICKLER 26C-34HZ (417FSL & 1425FEL, SEC.34)
 Field: WELD COUNTY (KERR MCGEE) Well: SICKLER 26C-34HZ
 Facility: SEC.34-T2N-R67W Wellbore: SICKLER 26C-34HZ PWB

Plot reference wellpath is SICKLER 26C-34HZ (PERMIT REV-3) PWP

True vertical depths are referenced to PERMIT (17KB) (RKB)	Grid System: NAD83 / Lambert Colorado SP, Northern Zone (501), US feet
Measured depths are referenced to PERMIT (17KB) (RKB)	North Reference: True north
PERMIT (17KB) (RKB) to Mean Sea Level: 4966 feet	Scale: True distance
Mean Sea Level to Mud line (At Slot: SLOT#12 SICKLER 26C-34HZ (417FSL & 1425FEL, SEC.34): 0 feet	Depths are in feet
Coordinates are in feet referenced to Slot	Created by: precin on 19/Mar/2014

Location Information

Facility Name	Grid East (US ft)	Grid North (US ft)	Latitude	Longitude
SEC.34-T2N-R67W	3172818.756	1280239.992	40°06'03.593"N	104°52'55.952"W
Slot	Local N (ft)	Local E (ft)	Grid East (US ft)	Grid North (US ft)
SLOT#12 SICKLER 26C-34HZ (417FSL & 1425FEL, SEC.34)	-4496.75	2642.64	3175492.552	1275761.948
PERMIT (17KB) (RKB) to Mud line (At Slot: SLOT#12 SICKLER 26C-34HZ (417FSL & 1425FEL, SEC.34)				4966R
Mean Sea Level to Mud line (At Slot: SLOT#12 SICKLER 26C-34HZ (417FSL & 1425FEL, SEC.34)				0R
PERMIT (17KB) (RKB) to Mean Sea Level				4966R

Survey Program

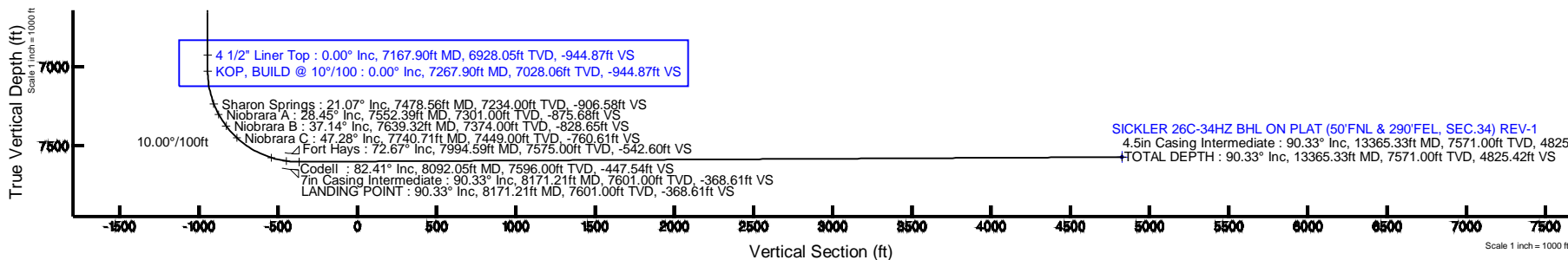
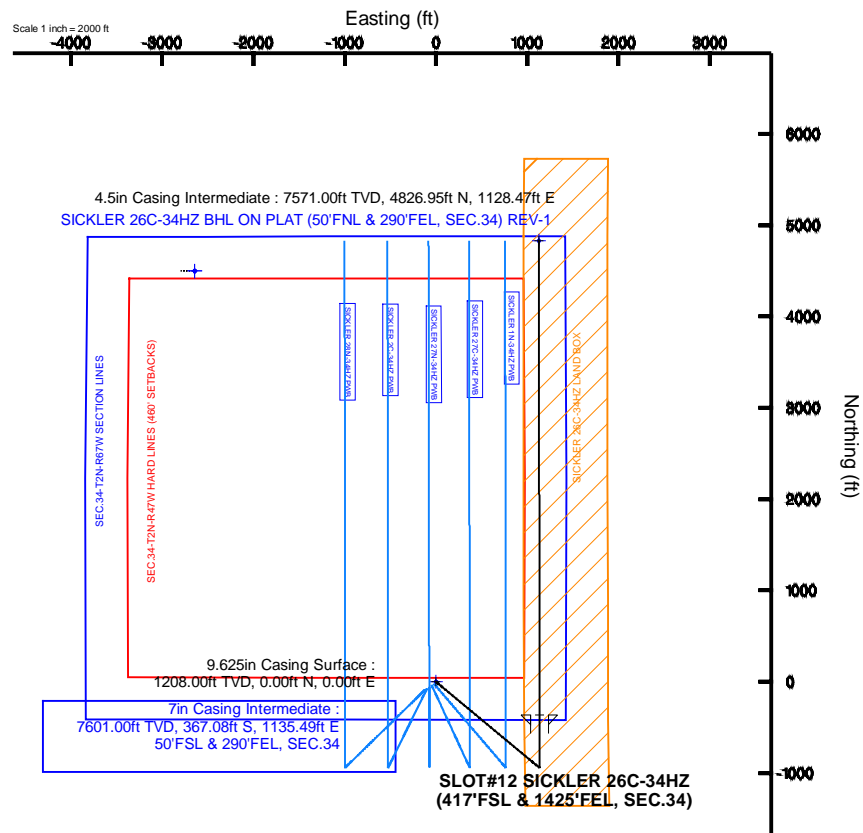
Start MD (ft)	End MD (ft)	Tool	Model	Log Name/Comment	Wellbore
17.00	13365.33	NaviTrak	NaviTrak (MAGCORR, IFR)		SICKLER 26C-34HZ PWB

Well Profile Data

Design Comment	MD (ft)	Inc (°)	Az (°)	TVD (ft)	Local N (ft)	Local E (ft)	DLS (°/100ft)	VS (ft)
TIE-ON	17.00	0.000	129.700	17.00	0.00	0.00	0.00	0.00
BEGIN NUDGE	1320.00	0.000	129.700	1320.00	0.00	0.00	0.00	0.00
END NUDGE	2320.00	20.000	129.700	2299.82	-110.36	132.93	2.00	-110.54
BEGIN DROP	5627.66	20.000	129.700	5408.00	-832.99	1003.34	0.00	-834.34
END DROP	6627.66	0.000	359.923	6387.82	-943.35	1136.27	2.00	-944.87
KOP, BUILD @ 10°/100	7267.90	0.000	359.923	7028.06	-943.35	1136.27	0.00	-944.87
LANDING POINT	8171.21	90.331	359.923	7601.00	-367.08	1135.49	10.00	-368.61
TOTAL DEPTH	13365.33	90.331	359.923	7571.00	4826.95	1128.47	0.00	4825.42

Targets

Name	MD (ft)	TVD (ft)	Local N (ft)	Local E (ft)	Grid East (US ft)	Grid North (US ft)	Latitude	Longitude
SEC.34-T2N-R47W HARD LINES (467 SETBACKS)		4966.00	4497.03	-2642.24	3172818.68	1280239.99	40°06'03.593"N	104°52'55.952"W
SEC.34-T2N-R67W SECTION LINES		4966.00	4497.03	-2642.24	3172818.68	1280239.99	40°06'03.593"N	104°52'55.952"W
SICKLER 26C-34HZ BHL ON PLAT (50°FNL & 290°FEL, SEC.34) REV-1	13365.33	7571.00	4826.95	1128.47	3176586.80	1280596.55	40°06'06.854"N	104°52'07.428"W
SICKLER 26C-34HZ LAND BOX		7571.00	0.00	0.00	3175492.55	1275761.95	40°06'19.154"N	104°52'21.950"W



Azimuth 359.92° with reference 0.00 N, 0.00 E

REFERENCE WELLPATH IDENTIFICATION			
Operator	KERR-MCGEE OIL & GAS ONSHORE LP	Slot	SLOT#12 SICKLER 26C-34HZ (417'FSL & 1425'FEL, SEC.34)
Area	COLORADO	Well	SICKLER 26C-34HZ
Field	WELD COUNTY (KERR MCGEE)	Wellbore	SICKLER 26C-34HZ PWB
Facility	SEC.34-T2N-R67W		

REPORT SETUP INFORMATION			
Projection System	NAD83 / Lambert Colorado SP, Northern Zone (501), US feet	Software System	WellArchitect® 4.0.0
North Reference	True	User	Precain
Scale	0.999961	Report Generated	19/Mar/2014 at 10:08
Convergence at slot	n/a	Database/Source file	WellArchitectDB/SICKLER_26C-34HZ_PWB.xml

WELLPATH LOCATION						
	Local coordinates		Grid coordinates		Geographic coordinates	
	North[ft]	East[ft]	Easting[US ft]	Northing[US ft]	Latitude	Longitude
Slot Location	-4496.75	2642.64	3175492.55	1275761.95	40°05'19.154"N	104°52'21.950"W
Facility Reference Pt			3172818.76	1280239.99	40°06'03.593"N	104°52'55.951"W
Field Reference Pt			3197771.84	1268891.29	40°04'09.600"N	104°47'36.000"W

WELLPATH DATUM			
Calculation method	Minimum curvature	PERMIT (17'KB) (RKB) to Facility Vertical Datum	4966.00ft
Horizontal Reference Pt	Slot	PERMIT (17'KB) (RKB) to Mean Sea Level	4966.00ft
Vertical Reference Pt	PERMIT (17'KB) (RKB)	PERMIT (17'KB) (RKB) to Mud Line at Slot (SLOT#12 SICKLER 26C-34HZ (417'FSL & 1425'FEL, SEC.34))	4966.00ft
MD Reference Pt	PERMIT (17'KB) (RKB)	Section Origin	N 0.00, E 0.00 ft
Field Vertical Reference	Mean Sea Level	Section Azimuth	359.92°

REFERENCE WELLPATH IDENTIFICATION			
Operator	KERR-MCGEE OIL & GAS ONSHORE LP	Slot	SLOT#12 SICKLER 26C-34HZ (417'FSL & 1425'FEL, SEC.34)
Area	COLORADO	Well	SICKLER 26C-34HZ
Field	WELD COUNTY (KERR MCGEE)	Wellbore	SICKLER 26C-34HZ PWB
Facility	SEC.34-T2N-R67W		

WELLPATH DATA (152 stations) † = interpolated/extrapolated station										
MD [ft]	Inclination [°]	Azimuth [°]	TVD [ft]	Vert Sect [ft]	North [ft]	East [ft]	Latitude	Longitude	DLS [°/100ft]	Comments
0.00†	0.000	129.700	0.00	0.00	0.00	0.00	40°05'19.154"N	104°52'21.950"W	0.00	
17.00	0.000	129.700	17.00	0.00	0.00	0.00	40°05'19.154"N	104°52'21.950"W	0.00	TIE-ON
117.00†	0.000	129.700	117.00	0.00	0.00	0.00	40°05'19.154"N	104°52'21.950"W	0.00	
217.00†	0.000	129.700	217.00	0.00	0.00	0.00	40°05'19.154"N	104°52'21.950"W	0.00	
317.00†	0.000	129.700	317.00	0.00	0.00	0.00	40°05'19.154"N	104°52'21.950"W	0.00	
417.00†	0.000	129.700	417.00	0.00	0.00	0.00	40°05'19.154"N	104°52'21.950"W	0.00	
517.00†	0.000	129.700	517.00	0.00	0.00	0.00	40°05'19.154"N	104°52'21.950"W	0.00	
617.00†	0.000	129.700	617.00	0.00	0.00	0.00	40°05'19.154"N	104°52'21.950"W	0.00	
717.00†	0.000	129.700	717.00	0.00	0.00	0.00	40°05'19.154"N	104°52'21.950"W	0.00	
817.00†	0.000	129.700	817.00	0.00	0.00	0.00	40°05'19.154"N	104°52'21.950"W	0.00	
917.00†	0.000	129.700	917.00	0.00	0.00	0.00	40°05'19.154"N	104°52'21.950"W	0.00	
1017.00†	0.000	129.700	1017.00	0.00	0.00	0.00	40°05'19.154"N	104°52'21.950"W	0.00	
1117.00†	0.000	129.700	1117.00	0.00	0.00	0.00	40°05'19.154"N	104°52'21.950"W	0.00	
1158.00†	0.000	129.700	1158.00	0.00	0.00	0.00	40°05'19.154"N	104°52'21.950"W	0.00	Fox Hills Marker
1217.00†	0.000	129.700	1217.00	0.00	0.00	0.00	40°05'19.154"N	104°52'21.950"W	0.00	
1317.00†	0.000	129.700	1317.00	0.00	0.00	0.00	40°05'19.154"N	104°52'21.950"W	0.00	
1320.00	0.000	129.700	1320.00	0.00	0.00	0.00	40°05'19.154"N	104°52'21.950"W	0.00	BEGIN NUDGE
1417.00†	1.940	129.700	1416.98	-1.05	-1.05	1.26	40°05'19.144"N	104°52'21.934"W	2.00	
1517.00†	3.940	129.700	1516.84	-4.33	-4.32	5.21	40°05'19.111"N	104°52'21.883"W	2.00	
1617.00†	5.940	129.700	1616.47	-9.84	-9.83	11.83	40°05'19.057"N	104°52'21.798"W	2.00	
1717.00†	7.940	129.700	1715.73	-17.57	-17.54	21.13	40°05'18.981"N	104°52'21.678"W	2.00	
1817.00†	9.940	129.700	1814.51	-27.51	-27.47	33.09	40°05'18.883"N	104°52'21.524"W	2.00	
1917.00†	11.940	129.700	1912.69	-39.66	-39.59	47.69	40°05'18.763"N	104°52'21.336"W	2.00	
2017.00†	13.940	129.700	2010.14	-53.98	-53.89	64.92	40°05'18.621"N	104°52'21.115"W	2.00	
2117.00†	15.940	129.700	2106.76	-70.48	-70.36	84.75	40°05'18.459"N	104°52'20.860"W	2.00	
2217.00†	17.940	129.700	2202.41	-89.12	-88.97	107.17	40°05'18.275"N	104°52'20.571"W	2.00	
2317.00†	19.940	129.700	2297.00	-109.88	-109.70	132.14	40°05'18.070"N	104°52'20.250"W	2.00	
2320.00	20.000	129.700	2299.82	-110.54	-110.36	132.93	40°05'18.063"N	104°52'20.240"W	2.00	END NUDGE
2417.00†	20.000	129.700	2390.97	-131.76	-131.55	158.45	40°05'17.854"N	104°52'19.911"W	0.00	
2517.00†	20.000	129.700	2484.93	-153.65	-153.40	184.77	40°05'17.638"N	104°52'19.573"W	0.00	
2617.00†	20.000	129.700	2578.90	-175.53	-175.24	211.08	40°05'17.422"N	104°52'19.234"W	0.00	
2717.00†	20.000	129.700	2672.87	-197.41	-197.09	237.40	40°05'17.206"N	104°52'18.896"W	0.00	
2817.00†	20.000	129.700	2766.84	-219.29	-218.94	263.71	40°05'16.990"N	104°52'18.557"W	0.00	
2917.00†	20.000	129.700	2860.81	-241.18	-240.79	290.03	40°05'16.774"N	104°52'18.218"W	0.00	
3017.00†	20.000	129.700	2954.78	-263.06	-262.63	316.34	40°05'16.559"N	104°52'17.880"W	0.00	
3117.00†	20.000	129.700	3048.75	-284.94	-284.48	342.66	40°05'16.343"N	104°52'17.541"W	0.00	
3217.00†	20.000	129.700	3142.72	-306.82	-306.33	368.97	40°05'16.127"N	104°52'17.203"W	0.00	
3317.00†	20.000	129.700	3236.69	-328.71	-328.17	395.29	40°05'15.911"N	104°52'16.864"W	0.00	
3417.00†	20.000	129.700	3330.66	-350.59	-350.02	421.60	40°05'15.695"N	104°52'16.526"W	0.00	
3517.00†	20.000	129.700	3424.63	-372.47	-371.87	447.92	40°05'15.479"N	104°52'16.187"W	0.00	
3617.00†	20.000	129.700	3518.60	-394.35	-393.72	474.23	40°05'15.263"N	104°52'15.848"W	0.00	
3717.00†	20.000	129.700	3612.57	-416.24	-415.56	500.55	40°05'15.047"N	104°52'15.510"W	0.00	
3817.00†	20.000	129.700	3706.54	-438.12	-437.41	526.86	40°05'14.831"N	104°52'15.171"W	0.00	
3917.00†	20.000	129.700	3800.50	-460.00	-459.26	553.18	40°05'14.615"N	104°52'14.833"W	0.00	
4017.00†	20.000	129.700	3894.47	-481.88	-481.10	579.49	40°05'14.400"N	104°52'14.494"W	0.00	

REFERENCE WELLPATH IDENTIFICATION				
Operator	KERR-MCGEE OIL & GAS ONSHORE LP		Slot	SLOT#12 SICKLER 26C-34HZ (417'FSL & 1425'FEL, SEC.34)
Area	COLORADO		Well	SICKLER 26C-34HZ
Field	WELD COUNTY (KERR MCGEE)		Wellbore	SICKLER 26C-34HZ PWB
Facility	SEC.34-T2N-R67W			

WELLPATH DATA (152 stations) † = interpolated/extrapolated station										
MD [ft]	Inclination [°]	Azimuth [°]	TVD [ft]	Vert Sect [ft]	North [ft]	East [ft]	Latitude	Longitude	DLS [°/100ft]	Comments
4030.33†	20.000	129.700	3907.00	-484.80	-484.02	583.00	40°05'14.371"N	104°52'14.449"W	0.00	Parkman
4117.00†	20.000	129.700	3988.44	-503.77	-502.95	605.81	40°05'14.184"N	104°52'14.156"W	0.00	
4217.00†	20.000	129.700	4082.41	-525.65	-524.80	632.12	40°05'13.968"N	104°52'13.817"W	0.00	
4317.00†	20.000	129.700	4176.38	-547.53	-546.65	658.44	40°05'13.752"N	104°52'13.479"W	0.00	
4417.00†	20.000	129.700	4270.35	-569.41	-568.49	684.75	40°05'13.536"N	104°52'13.140"W	0.00	
4517.00†	20.000	129.700	4364.32	-591.30	-590.34	711.07	40°05'13.320"N	104°52'12.801"W	0.00	
4617.00†	20.000	129.700	4458.29	-613.18	-612.19	737.38	40°05'13.104"N	104°52'12.463"W	0.00	
4625.21†	20.000	129.700	4466.00	-614.97	-613.98	739.54	40°05'13.086"N	104°52'12.435"W	0.00	Sussex
4717.00†	20.000	129.700	4552.26	-635.06	-634.03	763.70	40°05'12.888"N	104°52'12.124"W	0.00	
4817.00†	20.000	129.700	4646.23	-656.94	-655.88	790.01	40°05'12.672"N	104°52'11.786"W	0.00	
4917.00†	20.000	129.700	4740.20	-678.83	-677.73	816.33	40°05'12.456"N	104°52'11.447"W	0.00	
5017.00†	20.000	129.700	4834.17	-700.71	-699.58	842.64	40°05'12.241"N	104°52'11.109"W	0.00	
5117.00†	20.000	129.700	4928.14	-722.59	-721.42	868.96	40°05'12.025"N	104°52'10.770"W	0.00	
5217.00†	20.000	129.700	5022.11	-744.47	-743.27	895.27	40°05'11.809"N	104°52'10.431"W	0.00	
5317.00†	20.000	129.700	5116.07	-766.36	-765.12	921.59	40°05'11.593"N	104°52'10.093"W	0.00	
5417.00†	20.000	129.700	5210.04	-788.24	-786.96	947.90	40°05'11.377"N	104°52'09.754"W	0.00	
5517.00†	20.000	129.700	5304.01	-810.12	-808.81	974.22	40°05'11.161"N	104°52'09.416"W	0.00	
5617.00†	20.000	129.700	5397.98	-832.00	-830.66	1000.53	40°05'10.945"N	104°52'09.077"W	0.00	
5627.66	20.000	129.700	5408.00	-834.34	-832.99	1003.34	40°05'10.922"N	104°52'09.041"W	0.00	BEGIN DROP
5717.00†	18.213	129.700	5492.41	-853.04	-851.67	1025.84	40°05'10.737"N	104°52'08.752"W	2.00	
5817.00†	16.213	129.700	5587.93	-871.98	-870.57	1048.61	40°05'10.551"N	104°52'08.459"W	2.00	
5917.00†	14.213	129.700	5684.42	-888.77	-887.33	1068.79	40°05'10.385"N	104°52'08.199"W	2.00	
6017.00†	12.213	129.700	5781.77	-903.39	-901.93	1086.38	40°05'10.241"N	104°52'07.973"W	2.00	
6117.00†	10.213	129.700	5879.85	-915.83	-914.35	1101.34	40°05'10.118"N	104°52'07.780"W	2.00	
6217.00†	8.213	129.700	5978.56	-926.07	-924.58	1113.66	40°05'10.017"N	104°52'07.622"W	2.00	
6317.00†	6.213	129.700	6077.76	-934.11	-932.60	1123.32	40°05'09.938"N	104°52'07.498"W	2.00	
6417.00†	4.213	129.700	6177.34	-939.92	-938.40	1130.31	40°05'09.880"N	104°52'07.408"W	2.00	
6517.00†	2.213	129.700	6277.18	-943.51	-941.98	1134.62	40°05'09.845"N	104°52'07.352"W	2.00	
6617.00†	0.213	129.700	6377.15	-944.86	-943.33	1136.25	40°05'09.832"N	104°52'07.331"W	2.00	
6627.66	0.000	359.923	6387.82	-944.87	-943.35	1136.27	40°05'09.831"N	104°52'07.331"W	2.00	END DROP
6717.00†	0.000	359.923	6477.15	-944.87	-943.35	1136.27	40°05'09.831"N	104°52'07.331"W	0.00	
6817.00†	0.000	359.923	6577.15	-944.87	-943.35	1136.27	40°05'09.831"N	104°52'07.331"W	0.00	
6917.00†	0.000	359.923	6677.15	-944.87	-943.35	1136.27	40°05'09.831"N	104°52'07.331"W	0.00	
7017.00†	0.000	359.923	6777.15	-944.87	-943.35	1136.27	40°05'09.831"N	104°52'07.331"W	0.00	
7117.00†	0.000	359.923	6877.15	-944.87	-943.35	1136.27	40°05'09.831"N	104°52'07.331"W	0.00	
7167.90†	0.000	359.923	6928.05	-944.87	-943.35	1136.27	40°05'09.831"N	104°52'07.331"W	0.00	4 1/2" Liner Top
7217.00†	0.000	359.923	6977.15	-944.87	-943.35	1136.27	40°05'09.831"N	104°52'07.331"W	0.00	
7267.90	0.000	359.923	7028.06	-944.87	-943.35	1136.27	40°05'09.831"N	104°52'07.331"W	0.00	KOP, BUILD @ 10°/100
7317.00†	4.910	359.923	7077.09	-942.77	-941.24	1136.26	40°05'09.852"N	104°52'07.331"W	10.00	
7417.00†	14.910	359.923	7175.48	-925.58	-924.06	1136.24	40°05'10.022"N	104°52'07.331"W	10.00	
7478.56†	21.066	359.923	7234.00	-906.58	-905.05	1136.21	40°05'10.210"N	104°52'07.332"W	10.00	Sharon Springs
7517.00†	24.910	359.923	7269.38	-891.57	-890.05	1136.19	40°05'10.358"N	104°52'07.332"W	10.00	
7552.39†	28.449	359.923	7301.00	-875.68	-874.16	1136.17	40°05'10.515"N	104°52'07.332"W	10.00	Niobrara A
7617.00†	34.910	359.923	7355.95	-841.77	-840.24	1136.13	40°05'10.850"N	104°52'07.333"W	10.00	
7639.32†	37.142	359.923	7374.00	-828.65	-827.12	1136.11	40°05'10.980"N	104°52'07.333"W	10.00	Niobrara B

REFERENCE WELLPATH IDENTIFICATION				
Operator	KERR-MCGEE OIL & GAS ONSHORE LP		Slot	SLOT#12 SICKLER 26C-34HZ (417'FSL & 1425'FEL, SEC.34)
Area	COLORADO		Well	SICKLER 26C-34HZ
Field	WELD COUNTY (KERR MCGEE)		Wellbore	SICKLER 26C-34HZ PWB
Facility	SEC.34-T2N-R67W			

WELLPATH DATA (152 stations) † = interpolated/extrapolated station										
MD [ft]	Inclination [°]	Azimuth [°]	TVD [ft]	Vert Sect [ft]	North [ft]	East [ft]	Latitude	Longitude	DLS [°/100ft]	Comments
7717.00†	44.910	359.923	7432.56	-777.69	-776.17	1136.04	40°05'11.484"N	104°52'07.334"W	10.00	
7740.71†	47.281	359.923	7449.00	-760.61	-759.09	1136.02	40°05'11.652"N	104°52'07.334"W	10.00	Niobrara C
7817.00†	54.910	359.923	7496.88	-701.29	-699.76	1135.94	40°05'12.239"N	104°52'07.335"W	10.00	
7917.00†	64.910	359.923	7546.95	-614.87	-613.35	1135.82	40°05'13.093"N	104°52'07.337"W	10.00	
7994.59†	72.669	359.923	7575.00	-542.60	-541.07	1135.72	40°05'13.807"N	104°52'07.338"W	10.00	Fort Hays
8017.00†	74.910	359.923	7581.26	-521.08	-519.55	1135.69	40°05'14.019"N	104°52'07.338"W	10.00	
8092.05†	82.415	359.923	7596.00	-447.54	-446.02	1135.59	40°05'14.746"N	104°52'07.339"W	10.00	Codell
8117.00†	84.910	359.923	7598.75	-422.75	-421.22	1135.56	40°05'14.991"N	104°52'07.340"W	10.00	
8171.21	90.331	359.923	7601.00	-368.61	-367.08	1135.49	40°05'15.526"N	104°52'07.341"W	10.00	LANDING POINT
8217.00†	90.331	359.923	7600.74	-322.82	-321.29	1135.43	40°05'15.979"N	104°52'07.341"W	0.00	
8317.00†	90.331	359.923	7600.16	-222.82	-221.29	1135.29	40°05'16.967"N	104°52'07.343"W	0.00	
8417.00†	90.331	359.923	7599.58	-122.82	-121.29	1135.16	40°05'17.955"N	104°52'07.345"W	0.00	
8517.00†	90.331	359.923	7599.01	-22.82	-21.30	1135.02	40°05'18.943"N	104°52'07.347"W	0.00	
8617.00†	90.331	359.923	7598.43	77.18	78.70	1134.88	40°05'19.931"N	104°52'07.348"W	0.00	
8717.00†	90.331	359.923	7597.85	177.18	178.70	1134.75	40°05'20.920"N	104°52'07.350"W	0.00	
8817.00†	90.331	359.923	7597.27	277.17	278.70	1134.61	40°05'21.908"N	104°52'07.352"W	0.00	
8917.00†	90.331	359.923	7596.70	377.17	378.70	1134.48	40°05'22.896"N	104°52'07.353"W	0.00	
9017.00†	90.331	359.923	7596.12	477.17	478.69	1134.34	40°05'23.884"N	104°52'07.355"W	0.00	
9117.00†	90.331	359.923	7595.54	577.17	578.69	1134.21	40°05'24.872"N	104°52'07.357"W	0.00	
9217.00†	90.331	359.923	7594.96	677.17	678.69	1134.07	40°05'25.861"N	104°52'07.358"W	0.00	
9317.00†	90.331	359.923	7594.39	777.17	778.69	1133.94	40°05'26.849"N	104°52'07.360"W	0.00	
9417.00†	90.331	359.923	7593.81	877.16	878.69	1133.80	40°05'27.837"N	104°52'07.362"W	0.00	
9517.00†	90.331	359.923	7593.23	977.16	978.69	1133.67	40°05'28.825"N	104°52'07.363"W	0.00	
9617.00†	90.331	359.923	7592.65	1077.16	1078.68	1133.53	40°05'29.813"N	104°52'07.365"W	0.00	
9717.00†	90.331	359.923	7592.07	1177.16	1178.68	1133.40	40°05'30.802"N	104°52'07.367"W	0.00	
9817.00†	90.331	359.923	7591.50	1277.16	1278.68	1133.26	40°05'31.790"N	104°52'07.368"W	0.00	
9917.00†	90.331	359.923	7590.92	1377.15	1378.68	1133.13	40°05'32.778"N	104°52'07.370"W	0.00	
10017.00†	90.331	359.923	7590.34	1477.15	1478.68	1132.99	40°05'33.766"N	104°52'07.372"W	0.00	
10117.00†	90.331	359.923	7589.76	1577.15	1578.68	1132.86	40°05'34.754"N	104°52'07.373"W	0.00	
10217.00†	90.331	359.923	7589.19	1677.15	1678.67	1132.72	40°05'35.743"N	104°52'07.375"W	0.00	
10317.00†	90.331	359.923	7588.61	1777.15	1778.67	1132.59	40°05'36.731"N	104°52'07.377"W	0.00	
10417.00†	90.331	359.923	7588.03	1877.15	1878.67	1132.45	40°05'37.719"N	104°52'07.378"W	0.00	
10517.00†	90.331	359.923	7587.45	1977.14	1978.67	1132.32	40°05'38.707"N	104°52'07.380"W	0.00	
10617.00†	90.331	359.923	7586.88	2077.14	2078.67	1132.18	40°05'39.695"N	104°52'07.382"W	0.00	
10717.00†	90.331	359.923	7586.30	2177.14	2178.66	1132.05	40°05'40.684"N	104°52'07.383"W	0.00	
10817.00†	90.331	359.923	7585.72	2277.14	2278.66	1131.91	40°05'41.672"N	104°52'07.385"W	0.00	
10917.00†	90.331	359.923	7585.14	2377.14	2378.66	1131.78	40°05'42.660"N	104°52'07.387"W	0.00	
11017.00†	90.331	359.923	7584.57	2477.14	2478.66	1131.64	40°05'43.648"N	104°52'07.389"W	0.00	
11117.00†	90.331	359.923	7583.99	2577.13	2578.66	1131.51	40°05'44.636"N	104°52'07.390"W	0.00	
11217.00†	90.331	359.923	7583.41	2677.13	2678.66	1131.37	40°05'45.625"N	104°52'07.392"W	0.00	
11317.00†	90.331	359.923	7582.83	2777.13	2778.65	1131.24	40°05'46.613"N	104°52'07.394"W	0.00	
11417.00†	90.331	359.923	7582.25	2877.13	2878.65	1131.10	40°05'47.601"N	104°52'07.395"W	0.00	
11517.00†	90.331	359.923	7581.68	2977.13	2978.65	1130.96	40°05'48.589"N	104°52'07.397"W	0.00	
11617.00†	90.331	359.923	7581.10	3077.13	3078.65	1130.83	40°05'49.577"N	104°52'07.399"W	0.00	
11717.00†	90.331	359.923	7580.52	3177.12	3178.65	1130.69	40°05'50.566"N	104°52'07.400"W	0.00	

REFERENCE WELLPATH IDENTIFICATION			
Operator	KERR-MCGEE OIL & GAS ONSHORE LP	Slot	SLOT#12 SICKLER 26C-34HZ (417'FSL & 1425'FEL, SEC.34)
Area	COLORADO	Well	SICKLER 26C-34HZ
Field	WELD COUNTY (KERR MCGEE)	Wellbore	SICKLER 26C-34HZ PWB
Facility	SEC.34-T2N-R67W		

WELLPATH DATA (152 stations) † = interpolated/extrapolated station										
MD [ft]	Inclination [°]	Azimuth [°]	TVD [ft]	Vert Sect [ft]	North [ft]	East [ft]	Latitude	Longitude	DLS [°/100ft]	Comments
11817.00†	90.331	359.923	7579.94	3277.12	3278.65	1130.56	40°05'51.554"N	104°52'07.402"W	0.00	
11917.00†	90.331	359.923	7579.37	3377.12	3378.64	1130.42	40°05'52.542"N	104°52'07.404"W	0.00	
12017.00†	90.331	359.923	7578.79	3477.12	3478.64	1130.29	40°05'53.530"N	104°52'07.405"W	0.00	
12117.00†	90.331	359.923	7578.21	3577.12	3578.64	1130.15	40°05'54.518"N	104°52'07.407"W	0.00	
12217.00†	90.331	359.923	7577.63	3677.12	3678.64	1130.02	40°05'55.507"N	104°52'07.409"W	0.00	
12317.00†	90.331	359.923	7577.06	3777.11	3778.64	1129.88	40°05'56.495"N	104°52'07.410"W	0.00	
12417.00†	90.331	359.923	7576.48	3877.11	3878.64	1129.75	40°05'57.483"N	104°52'07.412"W	0.00	
12517.00†	90.331	359.923	7575.90	3977.11	3978.63	1129.61	40°05'58.471"N	104°52'07.414"W	0.00	
12617.00†	90.331	359.923	7575.32	4077.11	4078.63	1129.48	40°05'59.459"N	104°52'07.415"W	0.00	
12717.00†	90.331	359.923	7574.75	4177.11	4178.63	1129.34	40°06'00.448"N	104°52'07.417"W	0.00	
12817.00†	90.331	359.923	7574.17	4277.11	4278.63	1129.21	40°06'01.436"N	104°52'07.419"W	0.00	
12917.00†	90.331	359.923	7573.59	4377.10	4378.63	1129.07	40°06'02.424"N	104°52'07.420"W	0.00	
13017.00†	90.331	359.923	7573.01	4477.10	4478.62	1128.94	40°06'03.412"N	104°52'07.422"W	0.00	
13117.00†	90.331	359.923	7572.43	4577.10	4578.62	1128.80	40°06'04.400"N	104°52'07.424"W	0.00	
13217.00†	90.331	359.923	7571.86	4677.10	4678.62	1128.67	40°06'05.389"N	104°52'07.426"W	0.00	
13317.00†	90.331	359.923	7571.28	4777.10	4778.62	1128.53	40°06'06.377"N	104°52'07.427"W	0.00	
13365.33	90.331	359.923	7571.00 [†]	4825.42	4826.95	1128.47	40°06'06.854"N	104°52'07.428"W	0.00	TOTAL DEPTH

HOLE & CASING SECTIONS - Ref Wellbore: SICKLER 26C-34HZ PWB Ref Wellpath: SICKLER 26C-34HZ (PERMIT REV-3) PWP									
String/Diameter	Start MD [ft]	End MD [ft]	Interval [ft]	Start TVD [ft]	End TVD [ft]	Start N/S [ft]	Start E/W [ft]	End N/S [ft]	End E/W [ft]
13.5in Open Hole	17.00	1208.00	1191.00	17.00	1208.00	0.00	0.00	0.00	0.00
9.625in Casing Surface	17.00	1208.00	1191.00	17.00	1208.00	0.00	0.00	0.00	0.00
8.75in Open Hole	1208.00	8171.21	6963.21	1208.00	7601.00	0.00	0.00	-367.08	1135.49
7in Casing Intermediate	17.00	8171.21	8154.21	17.00	7601.00	0.00	0.00	-367.08	1135.49
6.125in Open Hole	8171.21	13365.33	5194.12	7601.00	7571.00	-367.08	1135.49	4826.95	1128.47
4.5in Casing Intermediate	17.00	13365.33	13348.33	17.00	7571.00	0.00	0.00	4826.95	1128.47

REFERENCE WELLPATH IDENTIFICATION			
Operator	KERR-MCGEE OIL & GAS ONSHORE LP	Slot	SLOT#12 SICKLER 26C-34HZ (417'FSL & 1425'FEL, SEC.34)
Area	COLORADO	Well	SICKLER 26C-34HZ
Field	WELD COUNTY (KERR MCGEE)	Wellbore	SICKLER 26C-34HZ PWB
Facility	SEC.34-T2N-R67W		

TARGETS									
Name	MD [ft]	TVD [ft]	North [ft]	East [ft]	Grid East [US ft]	Grid North [US ft]	Latitude	Longitude	Shape
SEC.34-T2N-R47W HARD LINES (460' SETBACKS)		4966.00	4497.03	-2642.24	3172818.68	1280239.99	40°06'03.593"N	104°52'55.952"W	polygon
SEC.34-T2N-R67W SECTION LINES		4966.00	4497.03	-2642.24	3172818.68	1280239.99	40°06'03.593"N	104°52'55.952"W	polygon
1) SICKLER 26C-34HZ BHL ON PLAT (50'FNL & 290'FEL, SEC.34) REV-1	13365.33	7571.00	4826.95	1128.47	3176586.80	1280596.55	40°06'06.854"N	104°52'07.428"W	point
SICKLER 26C-34HZ LAND BOX		7571.00	0.00	0.00	3175492.55	1275761.95	40°05'19.154"N	104°52'21.950"W	polygon

SURVEY PROGRAM - Ref Wellbore: SICKLER 26C-34HZ PWB Ref Wellpath: SICKLER 26C-34HZ (PERMIT REV-3) PWP				
Start MD [ft]	End MD [ft]	Positional Uncertainty Model	Log Name/Comment	Wellbore
17.00	13365.33	NaviTrak (MAGCORR,IFR)		SICKLER 26C-34HZ PWB

REFERENCE WELLPATH IDENTIFICATION			
Operator	KERR-MCGEE OIL & GAS ONSHORE LP	Slot	SLOT#12 SICKLER 26C-34HZ (417'FSL & 1425'FEL, SEC.34)
Area	COLORADO	Well	SICKLER 26C-34HZ
Field	WELD COUNTY (KERR MCGEE)	Wellbore	SICKLER 26C-34HZ PWB
Facility	SEC.34-T2N-R67W		

WELLPATH COMMENTS				
MD [ft]	Inclination [°]	Azimuth [°]	TVD [ft]	Comment
1158.00	0.000	129.700	1158.00	Fox Hills Marker
4030.33	20.000	129.700	3907.00	Parkman
4625.21	20.000	129.700	4466.00	Sussex
7167.90	0.000	359.923	6928.05	4 1/2" Liner Top
7478.56	21.066	359.923	7234.00	Sharon Springs
7552.39	28.449	359.923	7301.00	Niobrara A
7639.32	37.142	359.923	7374.00	Niobrara B
7740.71	47.281	359.923	7449.00	Niobrara C
7994.59	72.669	359.923	7575.00	Fort Hays
8092.05	82.415	359.923	7596.00	Codell

DESIGN COMMENTS				
MD [ft]	Inclination [°]	Azimuth [°]	TVD [ft]	Comment
17.00	0.000	129.700	17.00	TIE-ON
1320.00	0.000	129.700	1320.00	BEGIN NUDGE
2320.00	20.000	129.700	2299.82	END NUDGE
5627.66	20.000	129.700	5408.00	BEGIN DROP
6627.66	0.000	359.923	6387.82	END DROP
7267.90	0.000	359.923	7028.06	KOP, BUILD @ 10°/100
8171.21	90.331	359.923	7601.00	LANDING POINT
13365.33	90.331	359.923	7571.00	TOTAL DEPTH