

BILL BARRETT CORP

WELD COUNTY, COLORADO

Fiducial 6-62-34-_35 SWNW

Fiducial 6-62-34-3225BH2

Wellbore #1

Plan: Design #1

Standard Planning Report

24 March, 2014



Bill Barrett Corporation

COMPANY DETAILS: BILL BARRETT CORP

Calculation Method: Minimum Curvature
Error System: ISCWSA
Scan Method: Closest Approach 3D
Error Surface: Elliptical Conic
Warning Method: Error Ratio

REFERENCE INFORMATION

Co-ordinate (N/E) Reference: Well Fiducial 6-62-34-3225BH2, True North
Vertical (TVD) Reference: KB @ 4732.0ft (Original Well Elev)
Section (VS) Reference: Slot - (0.0N, 0.0E)
Measured Depth Reference: KB @ 4732.0ft (Original Well Elev)
Calculation Method: Minimum Curvature

WELL DETAILS: Fiducial 6-62-34-3225BH2

+N/-S +E/-W Northing Easting Latitude Longitude
0.0 0.0 1407388.56 3329153.9740° 26' 44.369 N 104° 19' 2.392 W

SECTION DETAILS

Sec	MD	Inc	Azi	TVD	+N/-S	+E/-W	DLeg	TFace	VSec	Target
1	0.0	0.00	0.00	0.0	0.0	0.0	0.00	0.00	0.0	
2	1000.0	0.00	0.00	1000.0	0.0	0.0	0.00	0.00	0.0	
3	1260.7	5.21	237.79	1260.3	-6.3	-10.0	2.00	237.79	-10.0	
4	5387.6	5.21	237.79	5370.2	-206.2	-327.4	0.00	0.00	-325.1	
5	5648.3	0.00	89.38	5630.5	-212.5	-337.4	2.00	180.00	-335.1	
6	5898.3	0.00	89.38	5880.5	-212.5	-337.4	0.00	89.38	-335.1	
7	6651.4	90.36	89.38	6358.0	-207.3	143.1	12.00	89.38	145.3	F 34-3225BH2 LP
8	16122.9	90.36	89.38	6298.0	-104.1	9613.9	0.00	0.00	9614.4	F 34-3225BH2 PBHL

PROJECT DETAILS: WELD COUNTY, COLORADO

Geodetic System: US State Plane 1983
Datum: North American Datum 1983
Ellipsoid: GRS 1980
Zone: Colorado Northern Zone

FORMATION TOP DETAILS

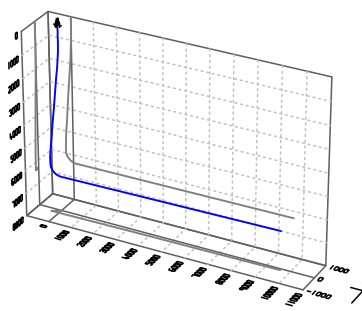
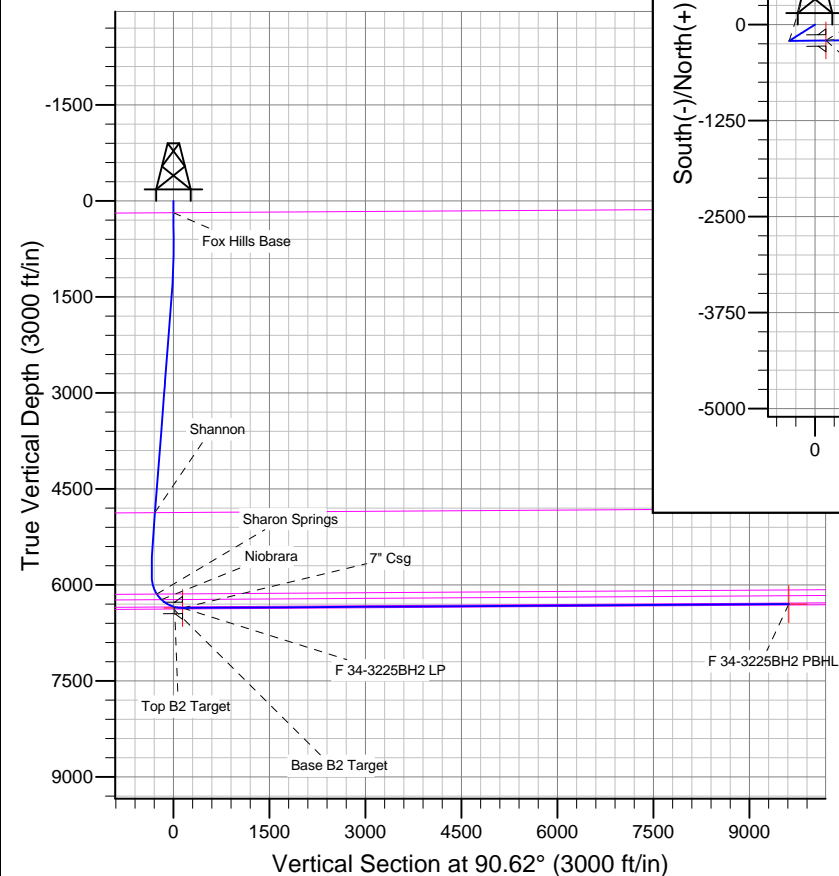
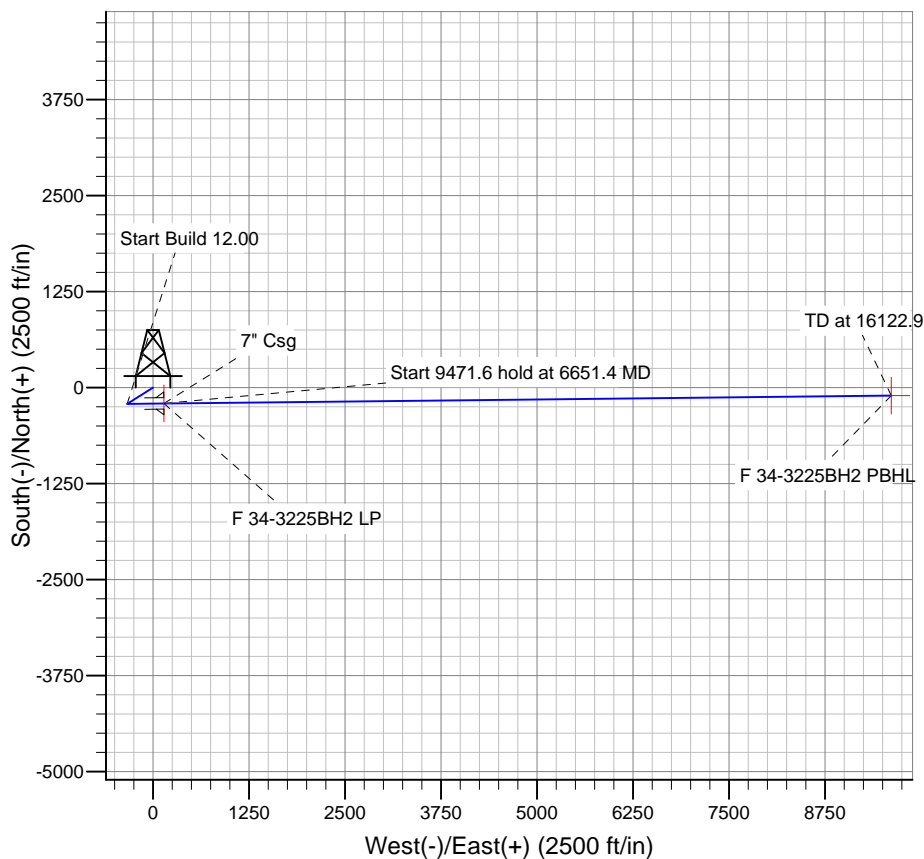
TVDPath	MDPath	Formation
182.0	182.0	Base B2 Target
4868.8	4864.2	Fox Hills Base
6140.7	6173.4	Shannon Springs
6228.2	6287.7	Niobrara
6341.9	6524.0	Top B2 Target

WELLBORE TARGET DETAILS

Name	TVD	+N/-S	+E/-W	Shape
F 34-3225BH2 PBHL	6298.0	-104.1	9613.9	Point
F 34-3225BH2 LP	6358.0	-207.3	143.1	Point

CASING DETAILS

TVD	MD	Name	Size
6358.0	6651.4	7" Csg	7



Azimuths to True North
Magnetic North: 8.25°

Magnetic Field
Strength: 52910.1snT
Dip Angle: 67.06°
Date: 3/24/2014
Model: IGRF2010

Bill Barrett Corp

Planning Report

Database:	Compass	Local Co-ordinate Reference:	Well Fiducial 6-62-34-3225BH2
Company:	BILL BARRETT CORP	TVD Reference:	KB @ 4732.0ft (Original Well Elev)
Project:	WELD COUNTY, COLORADO	MD Reference:	KB @ 4732.0ft (Original Well Elev)
Site:	Fiducial 6-62-34-_35 SWNW	North Reference:	True
Well:	Fiducial 6-62-34-3225BH2	Survey Calculation Method:	Minimum Curvature
Wellbore:	Wellbore #1		
Design:	Design #1		

Project	WELD COUNTY, COLORADO		
Map System:	US State Plane 1983	System Datum:	Mean Sea Level
Geo Datum:	North American Datum 1983		
Map Zone:	Colorado Northern Zone		

Site		Fiducial 6-62-34-_35 SWNW				
Site Position:		Northing:	1,407,388.56ft	Latitude:	40° 26' 44.369 N	
From:	Lat/Long	Easting:	3,329,153.97ft	Longitude:	104° 19' 2.392 W	
Position Uncertainty:		0.0 ft	Slot Radius:	"	Grid Convergence:	0.76 °

Well		Fiducial 6-62-34-3225BH2				
Well Position	+N-S	0.0 ft	Northing:	1,407,388.56 ft	Latitude:	40° 26' 44.369 N
	+E-W	0.0 ft	Easting:	3,329,153.97 ft	Longitude:	104° 19' 2.392 W
Position Uncertainty		0.0 ft	Wellhead Elevation:	ft	Ground Level:	4,710.0ft

Wellbore	Wellbore #1				
Magnetics	Model Name	Sample Date	Declination (°)	Dip Angle (°)	Field Strength (nT)
	IGRF2010	3/24/2014	8.25	67.06	52,910

Design	Design #1				
Audit Notes:					
Version:	Phase:	PLAN		Tie On Depth:	0.0
Vertical Section:	Depth From (TVD) (ft)	+N/-S (ft)	+E/-W (ft)	Direction (°)	
	0.0	0.0	0.0	90.62	

Plan Sections										
Measured Depth (ft)	Inclination (°)	Azimuth (°)	Vertical Depth (ft)	+N/-S (ft)	+E/-W (ft)	Dogleg Rate (°/100ft)	Build Rate (°/100ft)	Turn Rate (°/100ft)	TFO (°)	Target
0.0	0.00	0.00	0.0	0.0	0.0	0.00	0.00	0.00	0.00	
1,000.0	0.00	0.00	1,000.0	0.0	0.0	0.00	0.00	0.00	0.00	
1,260.7	5.21	237.79	1,260.3	-6.3	-10.0	2.00	2.00	0.00	237.79	
5,387.6	5.21	237.79	5,370.2	-206.2	-327.4	0.00	0.00	0.00	0.00	
5,648.3	0.00	89.38	5,630.5	-212.5	-337.4	2.00	-2.00	0.00	180.00	
5,898.3	0.00	89.38	5,880.5	-212.5	-337.4	0.00	0.00	0.00	89.38	
6,651.4	90.36	89.38	6,358.0	-207.3	143.1	12.00	12.00	0.00	89.38	F 34-3225BH2 LP
16,122.9	90.36	89.38	6,298.0	-104.1	9,613.9	0.00	0.00	0.00	0.00	F 34-3225BH2 PBT

Bill Barrett Corp

Planning Report

Database:	Compass	Local Co-ordinate Reference:	Well Fiducial 6-62-34-3225BH2
Company:	BILL BARRETT CORP	TVD Reference:	KB @ 4732.0ft (Original Well Elev)
Project:	WELD COUNTY, COLORADO	MD Reference:	KB @ 4732.0ft (Original Well Elev)
Site:	Fiducial 6-62-34-35 SWNW	North Reference:	True
Well:	Fiducial 6-62-34-3225BH2	Survey Calculation Method:	Minimum Curvature
Wellbore:	Wellbore #1		
Design:	Design #1		

Planned Survey									
Measured Depth (ft)	Inclination (°)	Azimuth (°)	Vertical Depth (ft)	+N/-S (ft)	+E/-W (ft)	Vertical Section (ft)	Dogleg Rate (°/100ft)	Build Rate (°/100ft)	Turn Rate (°/100ft)
0.0	0.00	0.00	0.0	0.0	0.0	0.0	0.00	0.00	0.00
100.0	0.00	0.00	100.0	0.0	0.0	0.0	0.00	0.00	0.00
182.0	0.00	0.00	182.0	0.0	0.0	0.0	0.00	0.00	0.00
Fox Hills Base									
200.0	0.00	0.00	200.0	0.0	0.0	0.0	0.00	0.00	0.00
300.0	0.00	0.00	300.0	0.0	0.0	0.0	0.00	0.00	0.00
400.0	0.00	0.00	400.0	0.0	0.0	0.0	0.00	0.00	0.00
500.0	0.00	0.00	500.0	0.0	0.0	0.0	0.00	0.00	0.00
600.0	0.00	0.00	600.0	0.0	0.0	0.0	0.00	0.00	0.00
700.0	0.00	0.00	700.0	0.0	0.0	0.0	0.00	0.00	0.00
800.0	0.00	0.00	800.0	0.0	0.0	0.0	0.00	0.00	0.00
900.0	0.00	0.00	900.0	0.0	0.0	0.0	0.00	0.00	0.00
1,000.0	0.00	0.00	1,000.0	0.0	0.0	0.0	0.00	0.00	0.00
1,100.0	2.00	237.79	1,100.0	-0.9	-1.5	-1.5	2.00	2.00	0.00
1,200.0	4.00	237.79	1,199.8	-3.7	-5.9	-5.9	2.00	2.00	0.00
1,260.7	5.21	237.79	1,260.3	-6.3	-10.0	-10.0	2.00	2.00	0.00
1,300.0	5.21	237.79	1,299.5	-8.2	-13.1	-13.0	0.00	0.00	0.00
1,400.0	5.21	237.79	1,399.1	-13.1	-20.7	-20.6	0.00	0.00	0.00
1,500.0	5.21	237.79	1,498.7	-17.9	-28.4	-28.2	0.00	0.00	0.00
1,600.0	5.21	237.79	1,598.2	-22.8	-36.1	-35.9	0.00	0.00	0.00
1,700.0	5.21	237.79	1,697.8	-27.6	-43.8	-43.5	0.00	0.00	0.00
1,800.0	5.21	237.79	1,797.4	-32.4	-51.5	-51.1	0.00	0.00	0.00
1,900.0	5.21	237.79	1,897.0	-37.3	-59.2	-58.8	0.00	0.00	0.00
2,000.0	5.21	237.79	1,996.6	-42.1	-66.9	-66.4	0.00	0.00	0.00
2,100.0	5.21	237.79	2,096.2	-47.0	-74.6	-74.1	0.00	0.00	0.00
2,200.0	5.21	237.79	2,195.8	-51.8	-82.3	-81.7	0.00	0.00	0.00
2,300.0	5.21	237.79	2,295.3	-56.7	-89.9	-89.3	0.00	0.00	0.00
2,400.0	5.21	237.79	2,394.9	-61.5	-97.6	-97.0	0.00	0.00	0.00
2,500.0	5.21	237.79	2,494.5	-66.3	-105.3	-104.6	0.00	0.00	0.00
2,600.0	5.21	237.79	2,594.1	-71.2	-113.0	-112.2	0.00	0.00	0.00
2,700.0	5.21	237.79	2,693.7	-76.0	-120.7	-119.9	0.00	0.00	0.00
2,800.0	5.21	237.79	2,793.3	-80.9	-128.4	-127.5	0.00	0.00	0.00
2,900.0	5.21	237.79	2,892.9	-85.7	-136.1	-135.1	0.00	0.00	0.00
3,000.0	5.21	237.79	2,992.4	-90.6	-143.8	-142.8	0.00	0.00	0.00
3,100.0	5.21	237.79	3,092.0	-95.4	-151.5	-150.4	0.00	0.00	0.00
3,200.0	5.21	237.79	3,191.6	-100.2	-159.2	-158.1	0.00	0.00	0.00
3,300.0	5.21	237.79	3,291.2	-105.1	-166.8	-165.7	0.00	0.00	0.00
3,400.0	5.21	237.79	3,390.8	-109.9	-174.5	-173.3	0.00	0.00	0.00
3,500.0	5.21	237.79	3,490.4	-114.8	-182.2	-181.0	0.00	0.00	0.00
3,600.0	5.21	237.79	3,590.0	-119.6	-189.9	-188.6	0.00	0.00	0.00
3,700.0	5.21	237.79	3,689.5	-124.5	-197.6	-196.2	0.00	0.00	0.00
3,800.0	5.21	237.79	3,789.1	-129.3	-205.3	-203.9	0.00	0.00	0.00
3,900.0	5.21	237.79	3,888.7	-134.1	-213.0	-211.5	0.00	0.00	0.00
4,000.0	5.21	237.79	3,988.3	-139.0	-220.7	-219.2	0.00	0.00	0.00
4,100.0	5.21	237.79	4,087.9	-143.8	-228.4	-226.8	0.00	0.00	0.00
4,200.0	5.21	237.79	4,187.5	-148.7	-236.0	-234.4	0.00	0.00	0.00
4,300.0	5.21	237.79	4,287.1	-153.5	-243.7	-242.1	0.00	0.00	0.00
4,400.0	5.21	237.79	4,386.7	-158.4	-251.4	-249.7	0.00	0.00	0.00
4,500.0	5.21	237.79	4,486.2	-163.2	-259.1	-257.3	0.00	0.00	0.00
4,600.0	5.21	237.79	4,585.8	-168.1	-266.8	-265.0	0.00	0.00	0.00
4,700.0	5.21	237.79	4,685.4	-172.9	-274.5	-272.6	0.00	0.00	0.00
4,800.0	5.21	237.79	4,785.0	-177.7	-282.2	-280.2	0.00	0.00	0.00
4,884.2	5.21	237.79	4,868.8	-181.8	-288.7	-286.7	0.00	0.00	0.00
Shannon									

Bill Barrett Corp

Planning Report

Database:	Compass	Local Co-ordinate Reference:	Well Fiducial 6-62-34-3225BH2
Company:	BILL BARRETT CORP	TVD Reference:	KB @ 4732.0ft (Original Well Elev)
Project:	WELD COUNTY, COLORADO	MD Reference:	KB @ 4732.0ft (Original Well Elev)
Site:	Fiducial 6-62-34- _35 SWNW	North Reference:	True
Well:	Fiducial 6-62-34-3225BH2	Survey Calculation Method:	Minimum Curvature
Wellbore:	Wellbore #1		
Design:	Design #1		

Planned Survey									
Measured Depth (ft)	Inclination (°)	Azimuth (°)	Vertical Depth (ft)	+N/-S (ft)	+E/-W (ft)	Vertical Section (ft)	Dogleg Rate (°/100ft)	Build Rate (°/100ft)	Turn Rate (°/100ft)
4,900.0	5.21	237.79	4,884.6	-182.6	-289.9	-287.9	0.00	0.00	0.00
5,000.0	5.21	237.79	4,984.2	-187.4	-297.6	-295.5	0.00	0.00	0.00
5,100.0	5.21	237.79	5,083.8	-192.3	-305.3	-303.2	0.00	0.00	0.00
5,200.0	5.21	237.79	5,183.3	-197.1	-312.9	-310.8	0.00	0.00	0.00
5,300.0	5.21	237.79	5,282.9	-202.0	-320.6	-318.4	0.00	0.00	0.00
5,387.6	5.21	237.79	5,370.2	-206.2	-327.4	-325.1	0.00	0.00	0.00
5,400.0	4.97	237.79	5,382.5	-206.8	-328.3	-326.0	2.00	-2.00	0.00
5,500.0	2.97	237.79	5,482.3	-210.5	-334.2	-331.9	2.00	-2.00	0.00
5,600.0	0.97	237.79	5,582.2	-212.3	-337.1	-334.7	2.00	-2.00	0.00
5,648.3	0.00	89.38	5,630.5	-212.5	-337.4	-335.1	2.00	-2.00	0.00
5,700.0	0.00	89.38	5,682.2	-212.5	-337.4	-335.1	0.00	0.00	0.00
5,800.0	0.00	89.38	5,782.2	-212.5	-337.4	-335.1	0.00	0.00	0.00
5,898.3	0.00	89.38	5,880.5	-212.5	-337.4	-335.1	0.00	0.00	0.00
5,900.0	0.20	89.38	5,882.2	-212.5	-337.4	-335.1	12.00	12.00	0.00
6,000.0	12.20	89.38	5,981.4	-212.4	-326.6	-324.3	12.00	12.00	0.00
6,100.0	24.20	89.38	6,076.3	-212.1	-295.4	-293.1	12.00	12.00	0.00
6,173.4	33.01	89.38	6,140.7	-211.7	-260.3	-258.0	12.00	12.00	0.00
Sharon Springs									
6,200.0	36.20	89.38	6,162.5	-211.5	-245.2	-242.9	12.00	12.00	0.00
6,287.7	46.73	89.38	6,228.2	-210.9	-187.2	-184.9	12.00	12.00	0.00
Niobrara									
6,300.0	48.20	89.38	6,236.5	-210.8	-178.2	-175.9	12.00	12.00	0.00
6,400.0	60.20	89.38	6,294.9	-209.9	-97.2	-95.0	12.00	12.00	0.00
6,500.0	72.20	89.38	6,335.2	-208.9	-5.9	-3.7	12.00	12.00	0.00
6,524.0	75.08	89.38	6,341.9	-208.7	17.1	19.3	12.00	12.00	0.00
Top B2 Target									
6,600.0	84.20	89.38	6,355.6	-207.8	91.8	94.0	12.00	12.00	0.00
6,651.4	90.36	89.38	6,358.0	-207.3	143.1	145.3	11.99	11.99	0.00
7" Csg - F 34-3225BH2 LP									
6,700.0	90.36	89.38	6,357.7	-206.8	191.7	193.9	0.01	0.01	0.00
6,800.0	90.36	89.38	6,357.1	-205.7	291.7	293.9	0.00	0.00	0.00
6,900.0	90.36	89.38	6,356.4	-204.6	391.7	393.9	0.00	0.00	0.00
7,000.0	90.36	89.38	6,355.8	-203.5	491.7	493.8	0.00	0.00	0.00
7,100.0	90.36	89.38	6,355.2	-202.4	591.7	593.8	0.00	0.00	0.00
7,200.0	90.36	89.38	6,354.5	-201.3	691.6	693.8	0.00	0.00	0.00
7,300.0	90.36	89.38	6,353.9	-200.2	791.6	793.8	0.00	0.00	0.00
7,400.0	90.36	89.38	6,353.3	-199.1	891.6	893.7	0.00	0.00	0.00
7,500.0	90.36	89.38	6,352.6	-198.0	991.6	993.7	0.00	0.00	0.00
7,600.0	90.36	89.38	6,352.0	-197.0	1,091.6	1,093.7	0.00	0.00	0.00
7,700.0	90.36	89.38	6,351.4	-195.9	1,191.6	1,193.7	0.00	0.00	0.00
7,800.0	90.36	89.38	6,350.7	-194.8	1,291.6	1,293.6	0.00	0.00	0.00
7,900.0	90.36	89.38	6,350.1	-193.7	1,391.6	1,393.6	0.00	0.00	0.00
8,000.0	90.36	89.38	6,349.5	-192.6	1,491.6	1,493.6	0.00	0.00	0.00
8,100.0	90.36	89.38	6,348.8	-191.5	1,591.6	1,593.6	0.00	0.00	0.00
8,200.0	90.36	89.38	6,348.2	-190.4	1,691.6	1,693.5	0.00	0.00	0.00
8,300.0	90.36	89.38	6,347.6	-189.3	1,791.6	1,793.5	0.00	0.00	0.00
8,400.0	90.36	89.38	6,346.9	-188.2	1,891.6	1,893.5	0.00	0.00	0.00
8,500.0	90.36	89.38	6,346.3	-187.2	1,991.5	1,993.5	0.00	0.00	0.00
8,600.0	90.36	89.38	6,345.7	-186.1	2,091.5	2,093.4	0.00	0.00	0.00
8,700.0	90.36	89.38	6,345.0	-185.0	2,191.5	2,193.4	0.00	0.00	0.00
8,800.0	90.36	89.38	6,344.4	-183.9	2,291.5	2,293.4	0.00	0.00	0.00
8,900.0	90.36	89.38	6,343.8	-182.8	2,391.5	2,393.4	0.00	0.00	0.00
9,000.0	90.36	89.38	6,343.1	-181.7	2,491.5	2,493.3	0.00	0.00	0.00

Bill Barrett Corp

Planning Report

Database:	Compass	Local Co-ordinate Reference:	Well Fiducial 6-62-34-3225BH2
Company:	BILL BARRETT CORP	TVD Reference:	KB @ 4732.0ft (Original Well Elev)
Project:	WELD COUNTY, COLORADO	MD Reference:	KB @ 4732.0ft (Original Well Elev)
Site:	Fiducial 6-62-34- _35 SWNW	North Reference:	True
Well:	Fiducial 6-62-34-3225BH2	Survey Calculation Method:	Minimum Curvature
Wellbore:	Wellbore #1		
Design:	Design #1		

Planned Survey										
Measured Depth (ft)	Inclination (°)	Azimuth (°)	Vertical Depth (ft)	+N/-S (ft)	+E/-W (ft)	Vertical Section (ft)	Dogleg Rate (°/100ft)	Build Rate (°/100ft)	Turn Rate (°/100ft)	
9,100.0	90.36	89.38	6,342.5	-180.6	2,591.5	2,593.3	0.00	0.00	0.00	
9,200.0	90.36	89.38	6,341.9	-179.5	2,691.5	2,693.3	0.00	0.00	0.00	
9,300.0	90.36	89.38	6,341.2	-178.4	2,791.5	2,793.3	0.00	0.00	0.00	
9,400.0	90.36	89.38	6,340.6	-177.4	2,891.5	2,893.2	0.00	0.00	0.00	
9,500.0	90.36	89.38	6,340.0	-176.3	2,991.5	2,993.2	0.00	0.00	0.00	
9,600.0	90.36	89.38	6,339.3	-175.2	3,091.5	3,093.2	0.00	0.00	0.00	
9,700.0	90.36	89.38	6,338.7	-174.1	3,191.5	3,193.1	0.00	0.00	0.00	
9,800.0	90.36	89.38	6,338.1	-173.0	3,291.4	3,293.1	0.00	0.00	0.00	
9,900.0	90.36	89.38	6,337.4	-171.9	3,391.4	3,393.1	0.00	0.00	0.00	
10,000.0	90.36	89.38	6,336.8	-170.8	3,491.4	3,493.1	0.00	0.00	0.00	
10,100.0	90.36	89.38	6,336.2	-169.7	3,591.4	3,593.0	0.00	0.00	0.00	
10,200.0	90.36	89.38	6,335.5	-168.6	3,691.4	3,693.0	0.00	0.00	0.00	
10,300.0	90.36	89.38	6,334.9	-167.6	3,791.4	3,793.0	0.00	0.00	0.00	
10,400.0	90.36	89.38	6,334.3	-166.5	3,891.4	3,893.0	0.00	0.00	0.00	
10,500.0	90.36	89.38	6,333.6	-165.4	3,991.4	3,992.9	0.00	0.00	0.00	
10,600.0	90.36	89.38	6,333.0	-164.3	4,091.4	4,092.9	0.00	0.00	0.00	
10,700.0	90.36	89.38	6,332.4	-163.2	4,191.4	4,192.9	0.00	0.00	0.00	
10,800.0	90.36	89.38	6,331.7	-162.1	4,291.4	4,292.9	0.00	0.00	0.00	
10,900.0	90.36	89.38	6,331.1	-161.0	4,391.4	4,392.8	0.00	0.00	0.00	
11,000.0	90.36	89.38	6,330.5	-159.9	4,491.3	4,492.8	0.00	0.00	0.00	
11,100.0	90.36	89.38	6,329.8	-158.8	4,591.3	4,592.8	0.00	0.00	0.00	
11,200.0	90.36	89.38	6,329.2	-157.8	4,691.3	4,692.8	0.00	0.00	0.00	
11,300.0	90.36	89.38	6,328.6	-156.7	4,791.3	4,792.7	0.00	0.00	0.00	
11,400.0	90.36	89.38	6,327.9	-155.6	4,891.3	4,892.7	0.00	0.00	0.00	
11,500.0	90.36	89.38	6,327.3	-154.5	4,991.3	4,992.7	0.00	0.00	0.00	
11,600.0	90.36	89.38	6,326.7	-153.4	5,091.3	5,092.7	0.00	0.00	0.00	
11,700.0	90.36	89.38	6,326.0	-152.3	5,191.3	5,192.6	0.00	0.00	0.00	
11,800.0	90.36	89.38	6,325.4	-151.2	5,291.3	5,292.6	0.00	0.00	0.00	
11,900.0	90.36	89.38	6,324.8	-150.1	5,391.3	5,392.6	0.00	0.00	0.00	
12,000.0	90.36	89.38	6,324.1	-149.0	5,491.3	5,492.6	0.00	0.00	0.00	
12,100.0	90.36	89.38	6,323.5	-148.0	5,591.3	5,592.5	0.00	0.00	0.00	
12,200.0	90.36	89.38	6,322.9	-146.9	5,691.3	5,692.5	0.00	0.00	0.00	
12,300.0	90.36	89.38	6,322.2	-145.8	5,791.2	5,792.5	0.00	0.00	0.00	
12,400.0	90.36	89.38	6,321.6	-144.7	5,891.2	5,892.5	0.00	0.00	0.00	
12,500.0	90.36	89.38	6,321.0	-143.6	5,991.2	5,992.4	0.00	0.00	0.00	
12,600.0	90.36	89.38	6,320.3	-142.5	6,091.2	6,092.4	0.00	0.00	0.00	
12,700.0	90.36	89.38	6,319.7	-141.4	6,191.2	6,192.4	0.00	0.00	0.00	
12,800.0	90.36	89.38	6,319.0	-140.3	6,291.2	6,292.4	0.00	0.00	0.00	
12,900.0	90.36	89.38	6,318.4	-139.2	6,391.2	6,392.3	0.00	0.00	0.00	
13,000.0	90.36	89.38	6,317.8	-138.1	6,491.2	6,492.3	0.00	0.00	0.00	
13,100.0	90.36	89.38	6,317.1	-137.1	6,591.2	6,592.3	0.00	0.00	0.00	
13,200.0	90.36	89.38	6,316.5	-136.0	6,691.2	6,692.3	0.00	0.00	0.00	
13,300.0	90.36	89.38	6,315.9	-134.9	6,791.2	6,792.2	0.00	0.00	0.00	
13,400.0	90.36	89.38	6,315.2	-133.8	6,891.2	6,892.2	0.00	0.00	0.00	
13,500.0	90.36	89.38	6,314.6	-132.7	6,991.1	6,992.2	0.00	0.00	0.00	
13,600.0	90.36	89.38	6,314.0	-131.6	7,091.1	7,092.2	0.00	0.00	0.00	
13,700.0	90.36	89.38	6,313.3	-130.5	7,191.1	7,192.1	0.00	0.00	0.00	
13,800.0	90.36	89.38	6,312.7	-129.4	7,291.1	7,292.1	0.00	0.00	0.00	
13,900.0	90.36	89.38	6,312.1	-128.3	7,391.1	7,392.1	0.00	0.00	0.00	
14,000.0	90.36	89.38	6,311.4	-127.3	7,491.1	7,492.0	0.00	0.00	0.00	
14,100.0	90.36	89.38	6,310.8	-126.2	7,591.1	7,592.0	0.00	0.00	0.00	
14,200.0	90.36	89.38	6,310.2	-125.1	7,691.1	7,692.0	0.00	0.00	0.00	
14,300.0	90.36	89.38	6,309.5	-124.0	7,791.1	7,792.0	0.00	0.00	0.00	
14,400.0	90.36	89.38	6,308.9	-122.9	7,891.1	7,891.9	0.00	0.00	0.00	

Bill Barrett Corp

Planning Report

Database:	Compass	Local Co-ordinate Reference:	Well Fiducial 6-62-34-3225BH2
Company:	BILL BARRETT CORP	TVD Reference:	KB @ 4732.0ft (Original Well Elev)
Project:	WELD COUNTY, COLORADO	MD Reference:	KB @ 4732.0ft (Original Well Elev)
Site:	Fiducial 6-62-34- _35 SWNW	North Reference:	True
Well:	Fiducial 6-62-34-3225BH2	Survey Calculation Method:	Minimum Curvature
Wellbore:	Wellbore #1		
Design:	Design #1		

Planned Survey

Measured Depth (ft)	Inclination (°)	Azimuth (°)	Vertical Depth (ft)	+N/-S (ft)	+E/-W (ft)	Vertical Section (ft)	Dogleg Rate (°/100ft)	Build Rate (°/100ft)	Turn Rate (°/100ft)
14,500.0	90.36	89.38	6,308.3	-121.8	7,991.1	7,991.9	0.00	0.00	0.00
14,600.0	90.36	89.38	6,307.6	-120.7	8,091.1	8,091.9	0.00	0.00	0.00
14,700.0	90.36	89.38	6,307.0	-119.6	8,191.1	8,191.9	0.00	0.00	0.00
14,800.0	90.36	89.38	6,306.4	-118.5	8,291.0	8,291.8	0.00	0.00	0.00
14,900.0	90.36	89.38	6,305.7	-117.5	8,391.0	8,391.8	0.00	0.00	0.00
15,000.0	90.36	89.38	6,305.1	-116.4	8,491.0	8,491.8	0.00	0.00	0.00
15,100.0	90.36	89.38	6,304.5	-115.3	8,591.0	8,591.8	0.00	0.00	0.00
15,200.0	90.36	89.38	6,303.8	-114.2	8,691.0	8,691.7	0.00	0.00	0.00
15,300.0	90.36	89.38	6,303.2	-113.1	8,791.0	8,791.7	0.00	0.00	0.00
15,400.0	90.36	89.38	6,302.6	-112.0	8,891.0	8,891.7	0.00	0.00	0.00
15,500.0	90.36	89.38	6,301.9	-110.9	8,991.0	8,991.7	0.00	0.00	0.00
15,600.0	90.36	89.38	6,301.3	-109.8	9,091.0	9,091.6	0.00	0.00	0.00
15,700.0	90.36	89.38	6,300.7	-108.7	9,191.0	9,191.6	0.00	0.00	0.00
15,800.0	90.36	89.38	6,300.0	-107.7	9,291.0	9,291.6	0.00	0.00	0.00
15,900.0	90.36	89.38	6,299.4	-106.6	9,391.0	9,391.6	0.00	0.00	0.00
16,000.0	90.36	89.38	6,298.8	-105.5	9,491.0	9,491.5	0.00	0.00	0.00
16,100.0	90.36	89.38	6,298.1	-104.4	9,590.9	9,591.5	0.00	0.00	0.00
16,122.9	90.36	89.38	6,298.0	-104.1	9,613.9	9,614.4	0.00	0.00	0.00
F 34-3225BH2 PBHL									

Casing Points

Measured Depth (ft)	Vertical Depth (ft)	Name	Casing Diameter (")	Hole Diameter (")
6,651.4	6,358.0	7" Csg	7	8-3/4

Formations

Measured Depth (ft)	Vertical Depth (ft)	Name	Lithology	Dip (°)	Dip Direction (°)
182.0	182.0	Fox Hills Base		-0.36	89.38
4,884.2	4,867.0	Shannon		-0.36	89.38
6,173.4	6,139.0	Sharon Springs		-0.36	89.38
6,287.7	6,227.0	Niobrara		-0.36	89.38
6,524.0	6,342.0	Top B2 Target		-0.36	89.38
	6,373.0	Base B2 Target		-0.36	89.38