

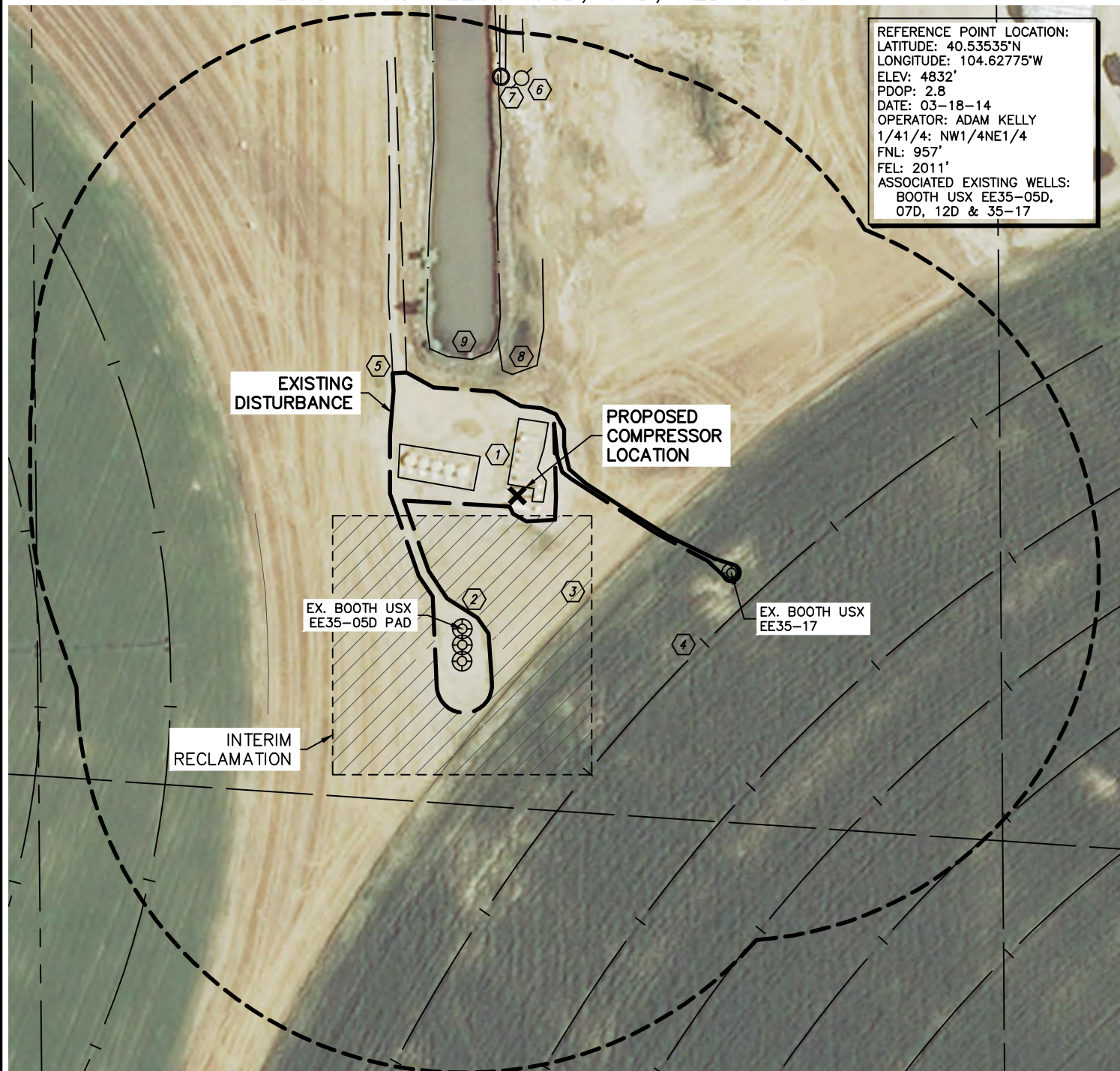


Lat40°, Inc. 1635 Foxtrail Drive, Suite 325 Loveland, CO 970-776-3321

PRODUCTION FACILITY LOCATION DRAWING

BOOTH USX EE35-05D, 07D, 12D & 35-17

SECTION: 35
TOWNSHIP: 7N
RANGE: 65W



IMPROVEMENTS:

(MEASURED FROM THE PROPOSED COMPRESSOR REFERENCE POINT)

- | | |
|---|--|
| (BU1) BUILDING UNIT, NONE WITHIN 500' IMPROVEMENT BUFFER | (5) ACCESS ROAD 230' NW, 590' N |
| (B1) BUILDING, NONE WITHIN 500' IMPROVEMENT BUFFER | (6) UTILITY POLE / OVERHEAD UTILITY 580' N |
| (1) EX. PRODUCTION EQUIPMENT (NOBLE) 14' N, 21' E, 61' NW | (7) IRRIGATION PUMP 582' N |
| (2) EX. WELL HEAD 200', 221' & 243' SW, 316' SE | (8) WET AREA 169' N |
| (3) EDGE OF FIELD 170' SE, 364' SW | (9) IRRIGATION POND 200' NW |
| (4) PIVOT TRACK 329', 514', 654' SE, 500' SW | |

NEAREST: BUILDING ±1050' NE, BUILDING UNIT ±1235' NW, HIGH OCCUPANCY BUILDING UNIT 5280'+,
DESIGNATED OUTSIDE ACTIVITY AREA 5280'+, PUBLIC ROAD ±940' N (CR76),
ABOVE GROUND UTILITY 580' N, RAILROAD 5280'+, PROPERTY LINE 150' W

DATE: 03/18/2014
PROJECT#: 2011149

