

EE3 LLC

T7N, R81W, 6th P.M.

Multiwell Plan  
GRIZZLY #3-11H and GRIZZLY #6-11H surface  
locations as shown in the NW1/4 NE1/4 of  
Section 11, T7N, R81W, 6th P.M.,  
Jackson County, Colorado.

BASIS OF BEARINGS

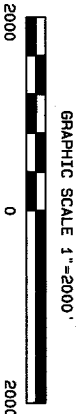
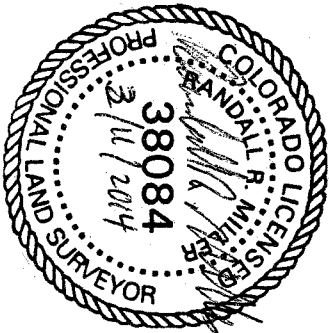
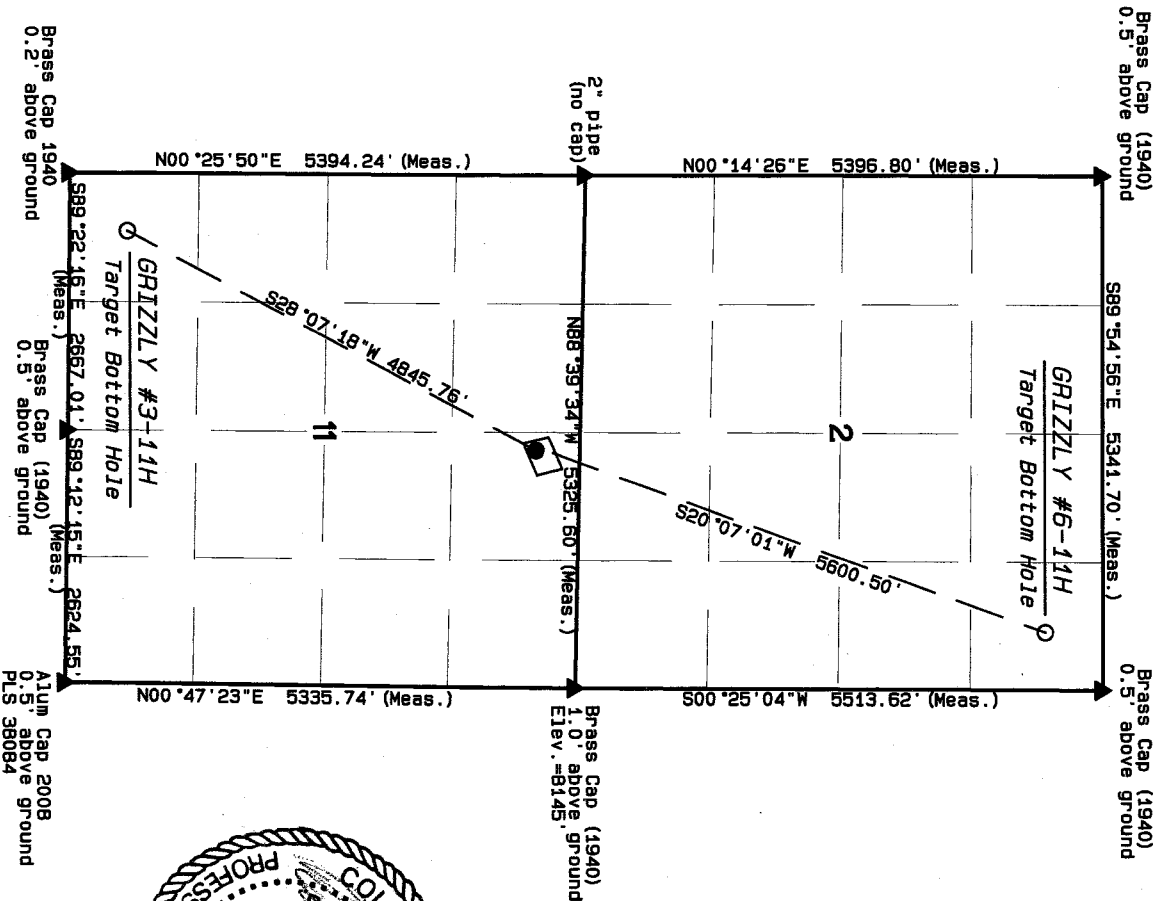
BASIS OF BEARINGS IS TRUE NORTH USING GPS

BASIS OF ELEVATION

SPOT ELEVATION AT THE NE CORNER OF SECTION 11,  
T7N, R81W, 6TH PM, TAKEN FROM THE COALMONT  
QUADRANGLE, USGS 7.5 MIN QUAD (TOPOGRAPHIC MAP)  
WITH SAID ELEVATION MARKED AS BEING 8145 FEET.

SURFACE USE: GRAZING

VEGETATION IS MAINLY SAGE-  
BRUSH AND NATIVE GRASSES



I RANDALL R. MILLER, BEING A REGISTERED LAND SURVEYOR IN THE  
STATE OF COLORADO, DO HEREBY CERTIFY THAT THIS PLAT WAS  
MADE BY ME AND/OR UNDER MY DIRECT SUPERVISION AND THAT IT  
IS ACCURATE TO THE BEST OF MY KNOWLEDGE.

DATED THIS \_\_\_\_\_ DAY OF \_\_\_\_\_ 2014.

RANDALL R. MILLER, COLORADO PLS NO. 38084

LEGEND

FOUND CORNER  
PROPOSED SHL  
PROPOSED BHL



PDOP = 1.425

NAD 83 (GRIZZLY #6-11H BHL)	NAD 83 (GRIZZLY #6-11H SHL)	NORTH PARK ENGINEERING & CONSULTING, INC. P.O. BOX 395 WALDEN, CO. 80480 (970) 723-3725
LATITUDE=40.5613047°N	LATITUDE=40.598555°N	
LONGITUDE=106.446389°W	LONGITUDE=106.453123°W	
NAD 83 (GRIZZLY #3-11H BHL)	NAD 83 (GRIZZLY #3-11H SHL)	DATE OF FIELD WORK: JULY 26, 2013 DRAWING COMPLETION: MARCH 11, 2014
LATITUDE=40.586600°N	LATITUDE=40.598397°N	
LONGITUDE=106.461127°W	LONGITUDE=106.453069°W	
SURVEYED BY: RAS		DRAWN BY: TAT
		CHECKED BY: RM