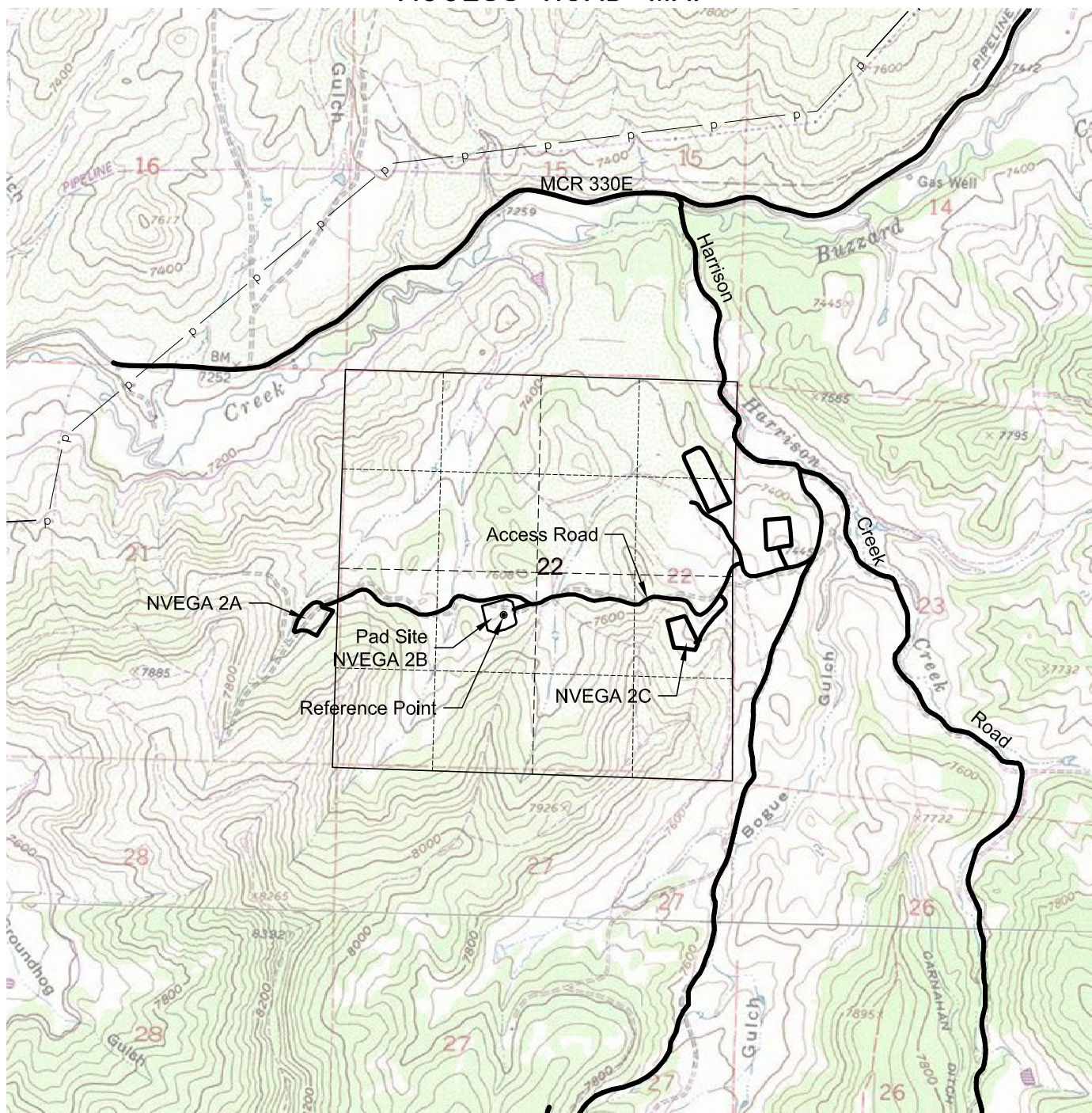


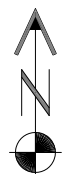
ACCESS ROAD MAP



DRIVING DIRECTIONS:

From the intersection of Mesa County Road (MCR) 330E and Harrison Creek Road, South for 0.7 Miles
 Right onto the Gravel Access Road South
 First Right headed West on Access Road
 Continue in Westerly direction as road veers north take first left in Westerly direction onto the NVEGA 2A,B, and C pads access Road
 Continue West past NVEGA Pad 2C to next Pad NVEGA 2B

3/20/14



North

0 2000 4000

Graphic Scale in Feet
 1" = 2000'



LAND SURVEYING AND MAPPING
 LAFAYETTE - WINTER PARK
 Ph 303 666 0379 Fx 303 665 6320

PICEANCE ENERGY, LLC
NVEGA 2B PAD

NE1/4 SW1/4 SECTION 22 T9S R93W
6th PM MESA COUNTY COLORADO