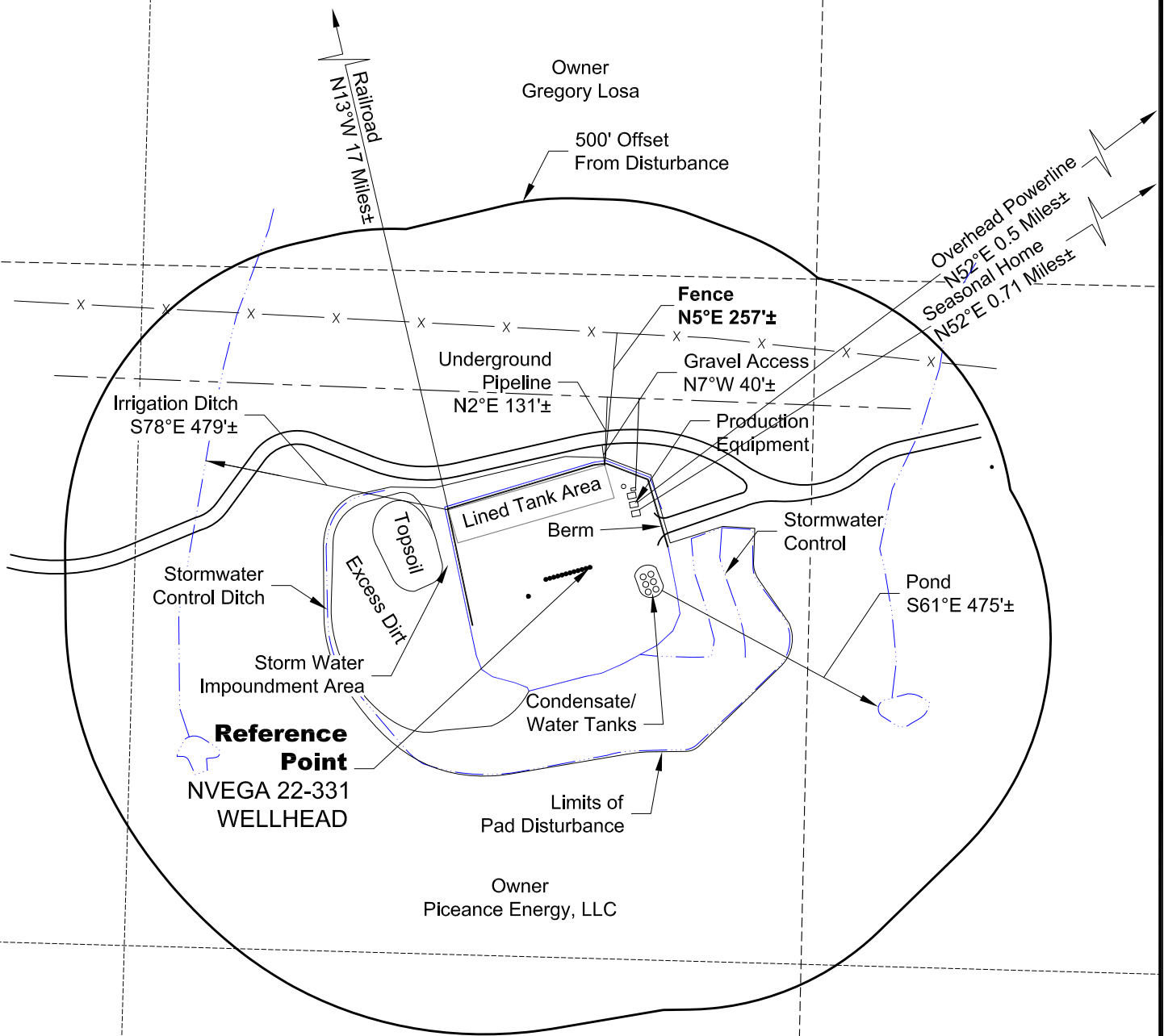


LOCATION DRAWING NVEGA 2B PAD (Existing Well Pad)

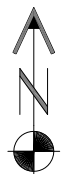
VEGETATION:
GRASSES
SURFACE USE:
AGRICULTURAL

REFERENCE POINT

LATITUDE: 39.260870
LONGITUDE: -107.757460
FOOTAGE: 2079 FSL 2202 FWL
GROUND ELEVATION: 7587.4'
PDOP: 3.2 DATE: Delta Plat
INSTRUMENT OPERATOR:
Original Delta Survey Plat



DWG: G:\GEO SURV\Laramie\1_\Laramie-Buzzard-Creek\Delta\Wellplat\W 2B Delta Pad\W 2B F2A.dwg USER: Survey DATE: Mar 20, 2014 1:38pm



North

0 300 600

Graphic Scale in Feet
1" = 300'



LAND SURVEYING AND MAPPING
LAFAYETTE - WINTER PARK
Ph 303 666 0379 Fx 303 665 6320

PICEANCE ENERGY, LLC
NVEGA 2B PAD

NE1/4 SW1/4 SECTION 22 T9S R93W
6th PM MESA COUNTY COLORADO

3/20/14