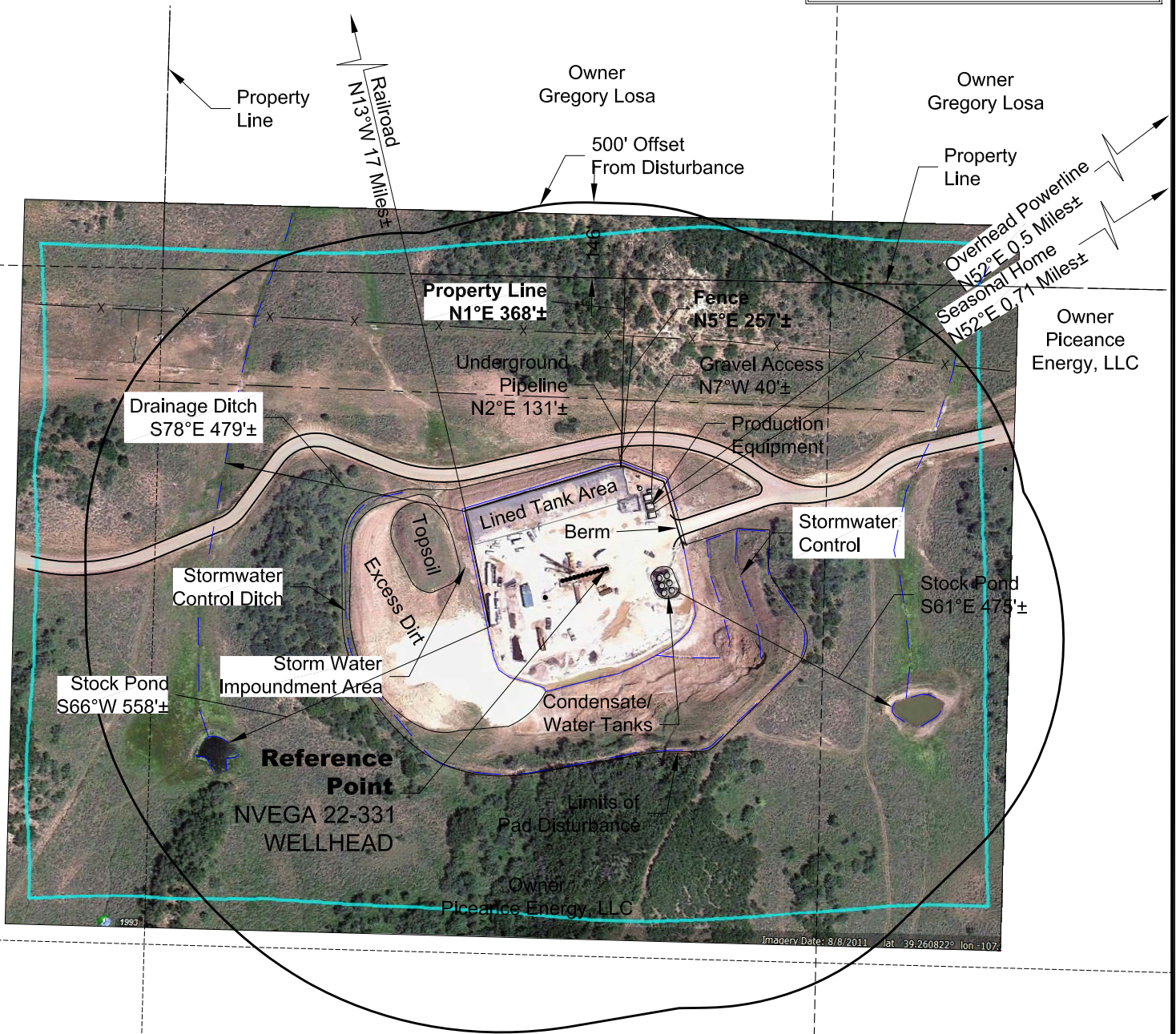


LOCATION DRAWING NVEGA 2B PAD (Existing Well Pad)

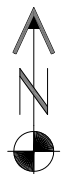
VEGETATION:
GRASSES
SURFACE USE:
AGRICULTURAL

REFERENCE POINT

LATITUDE: 39.260870
LONGITUDE: -107.757460
FOOTAGE: 2079 FSL 2202 FWL
GROUND ELEVATION: 7497.0
PDOP: 3.2 DATE: Delta Plat
INSTRUMENT OPERATOR: Original Delta Survey Plat



DWG: G:\GEO SURV\Laramie\Buzzard-Creek\Delta Wellplat\W 2B Delta Pad\W 2B F2A.dwg USER: E/G DATE: Mar 21, 2014 3:46pm



North

0 300 600

Graphic Scale in Feet
1" = 300'



LAND SURVEYING AND MAPPING
LAFAYETTE - WINTER PARK
Ph 303 666 0379 Fx 303 665 6320

**PICEANCE ENERGY, LLC
NVEGA 2B PAD**

**NE1/4 SW1/4 SECTION 22 T9S R93W
6th PM MESA COUNTY COLORADO**

3/21/14