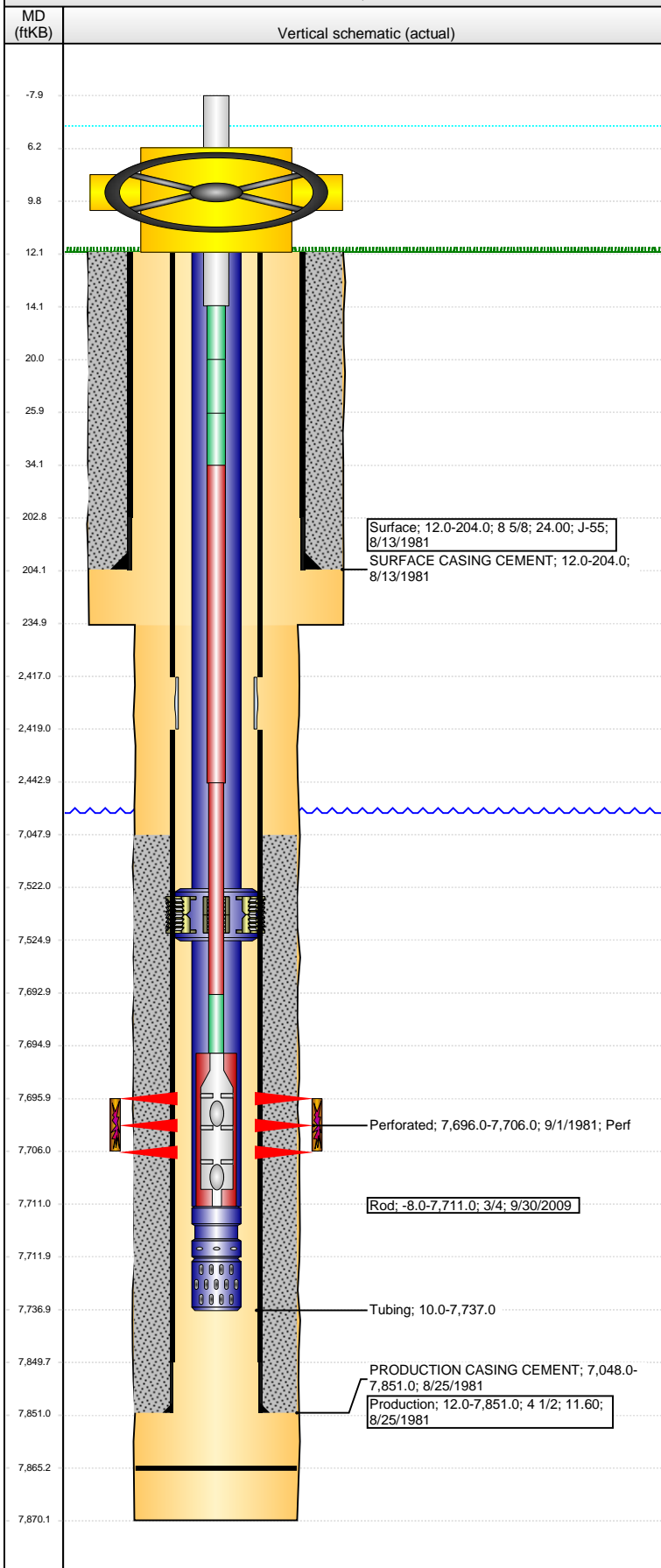


**Well Name: CINDY 23-28**

VERTICAL - ORIGINAL HOLE, 3/26/2014 6:53:10 AM



## Well Header

API 05-123-10361	Business Unit WATTENBERG	District 15	Well Config VERTICAL
Original KB Elevation (ft) 5,143.00	KB - GL / MSL (ftKB) 12.00	Spud Date 8/13/1981	P & A Date

## Comment

SLIDING SLEEVE @2417'  
VERY LITTLE DATA & CONFLICTING DATA

## Directions To Well

RD 4 & 53, EAST .3, NORTH .3 INTO.

## Congressional Location

Quarter 1	Quarter 2	Quarter 3	Quarter 4	Section	Township	Twnshp N...	Range	Rng E/W Dir
		NE	SW	28	1	N	64	W

## Bottom Hole Location

North-South Distance (ft)	From N or S Line	East-West Distance (ft)	From E or W Line
---------------------------	------------------	-------------------------	------------------

## Plug Back Total Depths

Date	Depth (ftKB)	Method	Com
8/22/1981	7,865.0	TAG	

## Wellbore Sections

Section Des	Size (in)	Act Top, MD (ftKB)	Act Btm, MD (ftKB)
SURFACE	12 1/4	12.0	235.0
PRODUCTION	7 7/8	235.0	7,870.0

## Zone Statuses

Zone Name	Status Date	Status	Job
D SAND	8/13/1981	PR	DRILLING/COMPLETION - ORIGINAL, 8/13/1981 00:00

## Casing Strings

### Surface, 204.0ftKB

Casing Description	Run Date	OD (in)	Wt/Len (l...)	Grade	Top, MD (ft...)	MD (ftKB)
Surface	8/13/1981	8 5/8	24.00	J-55	12.0	204.0

### Production, 7,851.0ftKB

Casing Description	Run Date	OD (in)	Wt/Len (l...)	Grade	Top, MD (ft...)	MD (ftKB)
Production	8/25/1981	4 1/2	11.60		12.0	7,851.0

## Cement

Description	Top Depth (ftKB)	Bottom Depth (ftKB)
SURFACE CASING CEMENT	12.0	204.0
Description	Top Depth (ftKB)	Bottom Depth (ftKB)
PRODUCTION CASING CEMENT	7,048.0	7,851.0

## Tubing Components

Item Des	OD (in)	Wt (lb/ft)	Grade	Jts	Len (ft)	Btm (ftKB)	Btm (TVD) (ftKB)
Tubing	2 3/8	4.70	J-55	242	7,512.00	7,522.0	
Anchor/catcher	4	4.70	J-55	1	3.00	7,525.0	
Tubing	2 3/8	4.70	J-55	6	186.00	7,711.0	
Pump Seating Nipple	2 3/8	4.70	N-80	1	1.00	7,712.0	
Slotted Joint	2 3/8	4.70	J-55	1	25.00	7,737.0	

## Rods & Pumps

Rod Description	Run Date	Set Depth (ftKB)
Rod	9/30/2009	7,711.0

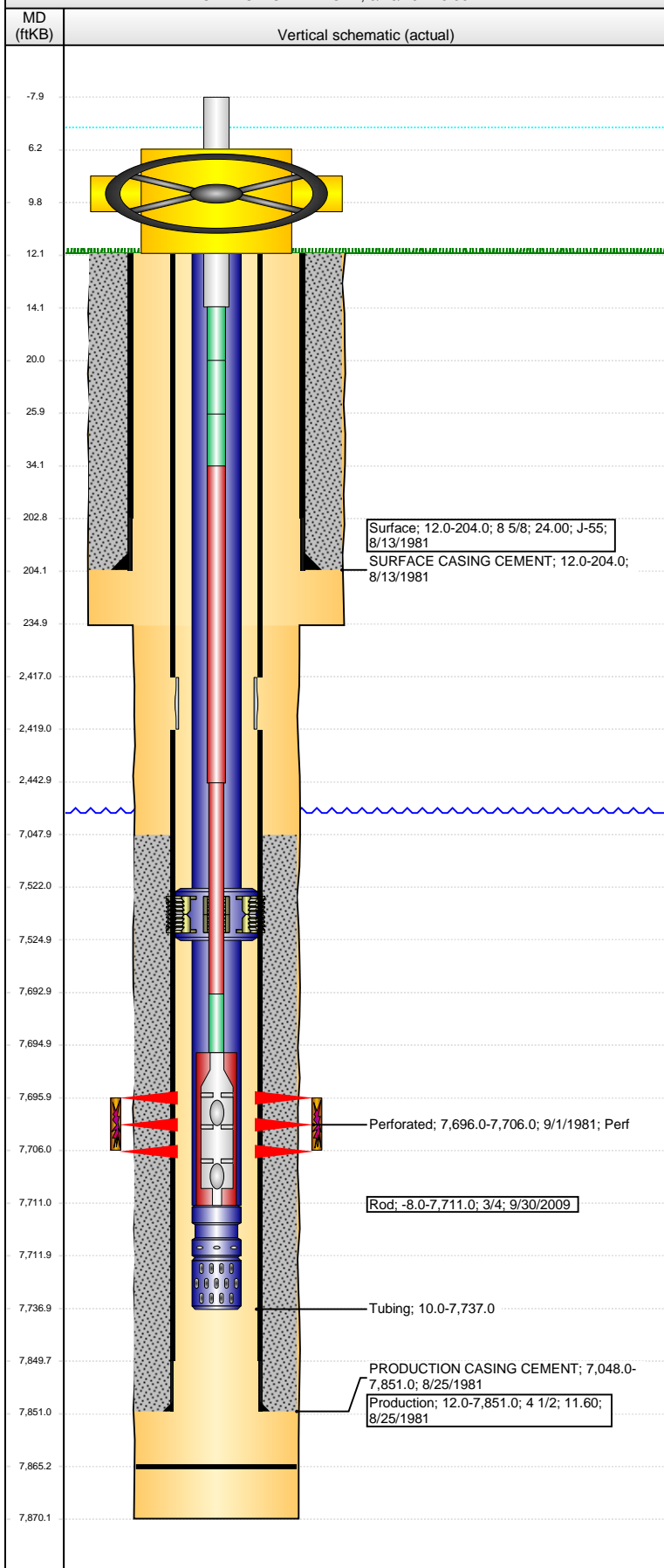
## Comment

Item Description	OD Nominal (in)	Joints	Length (ft)
Polished Rod	1 1/4	1	22.00
Item Description	OD Nominal (in)	Joints	Length (ft)
Pony Rod	7/8	1	6.00
Item Description	OD Nominal (in)	Joints	Length (ft)
Pony Rod	7/8	1	6.00
Item Description	OD Nominal (in)	Joints	Length (ft)
Pony Rod	7/8	1	8.00
Item Description	OD Nominal (in)	Joints	Length (ft)
Sucker Rod	7/8	96	2,409.00
Item Description	OD Nominal (in)	Joints	Length (ft)
Sucker Rod	3/4	210	5,250.00
Item Description	OD Nominal (in)	Joints	Length (ft)
Pony Rod	3/4	1	2.00
Item Description	OD Nominal (in)	Joints	Length (ft)
Rod Insert Pump	2	1	16.00

API Pump Type	Barrel Length (ft)	Seating Assembly Type
R	13.00	C

**Well Name: CINDY 23-28**

VERTICAL - ORIGINAL HOLE, 3/26/2014 6:53:12 AM



Perforation Data					
Zone	Bnch/St g	Entered Shot Total	Top (ftKB)	Btm (ftKB)	Date
D SAND, ORIGINAL HOLE		20	7,696.00	7,706.00	9/1/1981
Stimulations & Treatments					
Date	Zone	Primary Job Type			
9/2/1981	D SAND, ORIGINAL HOLE	DRILLING/COMPLETION - ORIGINAL			
Technical Result		Tech Result Details		Tech Result Note	
Comment					
Other In Hole					
Run Date	Des		OD (in)	Top (ftKB)	Btm (ftKB)
Logs					
Date	Type		Top, MD (ftKB)	Btm, MD (ftKB)	
8/22/1981	COMPENSATED DENSITY		4,700.0	7,868.0	
8/22/1981	INDUCTION		131.0	7,863.0	
8/28/1981	CBL/CCL/GR		6,900.0	7,840.0	