

**ANADARKO PETROLEUM CORP - EBUS
DO NOT MAIL - PO BOX 4995
THE WOODLANDS, Texas**

Dreiling 27N-32HZ

Majors 42

Post Job Summary **Cement Surface Casing**

Date Prepared: 3/18/2014
Version: 1

Service Supervisor: WHIPPLE, WESLEY

Submitted by: PRUDHOMME, JOSHUA

HALLIBURTON

HALLIBURTON

Wellbore Geometry

Job Tubulars					MD		Shoe Joint Length ft
Type	Description	Size in	ID in	Wt lbm/ft	Top ft	Bottom ft	
Casing	9 5/8" Surface Casing	9.63	8.921	36.00	0.00	1,049.00	45.00
Open Hole Section	13 1/2" Open Hole Section		13.500		0.00	1,049.00	0.00

HALLIBURTON

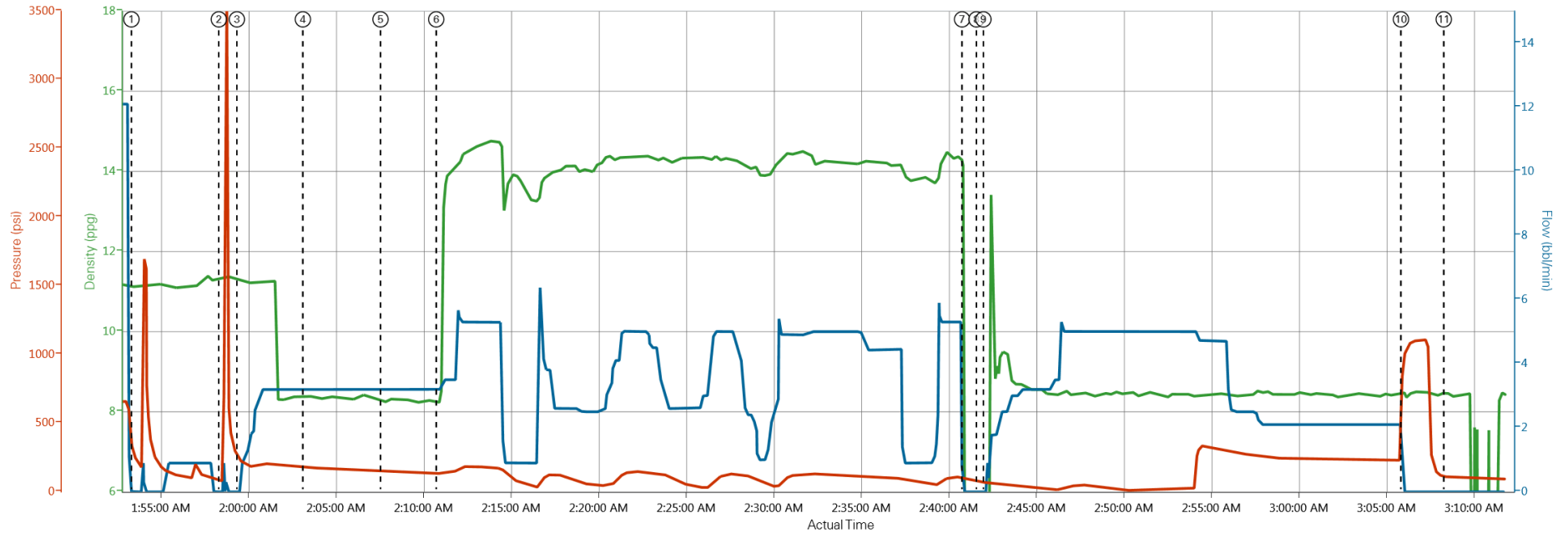
Pumping Schedule

Stage /Plug #	Fluid #	Fluid Type	Fluid Name	Surface Density lbm/gal	Avg Rate bbl/min	Surface Volume	Downhole Volume
1	1	Spacer	Fresh Water Spacer	8.33	3.5	10.0 bbl	10.0 bbl
1	2	Spacer	Mud Flush	8.40	3.5	12.0 bbl	12.0 bbl
1	3	Spacer	fresh water spacer	8.33	3.5	10.0 bbl	10.0 bbl
1	4	Cement Slurry	SwiftCem B2	14.2	5.0	392.0 sacks	392.0 sacks

HALLIBURTON

Data Acquisition

ANADARKO DREILING 27N-32HZ



DH Density (ppg) Comb Pump Rate (bbl/min) PS Pump Press (psi)

① Start Job 11.13;0;274 ④ Pump Spacer 2 8.37;3.2;179 ⑦ Shutdown 0.34;0;102 ⑩ Bump Plug 8.5;0;969
 ② Test Lines 11.31;0;81 ⑤ Pump Spacer 1 8.27;3.2;151 ⑧ Drop Top Plug 0.2;0;77 ⑪ End Job 8.51;0;110
 ③ Pump Spacer 1 11.27;0;235 ⑥ Pump Cement 8.22;3.2;134 ⑨ Pump Displacement 0.18;0;67

HALLIBURTON

Service Supervisor Reports

Job Log

Date/Time	Chart #	Activity Code	Pump Rate	Cum Vol	Pump		Pressure (psig)	Comments
12/04/2013 18:40		Call Out						CREW CALLED OUT BY ARS OFFICE @ 1840
12/04/2013 22:00		Crew Leave Yard						CREW PRE TRIPPED JOB EQUIPMENT, HELD A PRE JOURNEY SAFETY MEETING, DISCUSSED HAZARDS AND ROUTE.
12/04/2013 22:30		Arrive At Loc						ARRIVED ON LOCATION @ 2230, RIG HAD JUST STARTED RUNNING CASING. MET WITH COMPANY REP TO DISCUSS JOB
12/04/2013 23:00		Rig-Up Equipment						HELD A PRE RIG UP SAFETY MEETING TO DISCUSS RIG UP AND POTENTIAL HAZARDS. COMMENCED RIG UP OF BULK, MIXING EQUIPMENT AND IRON.
12/05/2013 00:50		Casing on Bottom						RIG HAD CASING ON BOTTOM @
12/05/2013 01:15		Safety Meeting						HELD A PRE JOB SAFETY MEETING WITH ALL HANDS ON LOCATION TO DISCUSS JOB PROCESS, PROCEDURES AND POTENTIAL HAZARDS
12/05/2013 01:53		Start Job						
12/05/2013 01:58		Test Lines						PRESSURE TESTED PUMPS AND LINES TO 3000PSI, FOUND NO LEAKS IN IRON AND PRESSURE HELD
12/05/2013 01:59		Pump Spacer 1	3.5	10			178.0	PUMPED 10BBL FRESH WATER SPACER
12/05/2013 02:03		Pump Spacer 2	3.5	12			130.0	MIXED AND PUMPED 12BBL MUD FLUSH SPACER
12/05/2013 02:07		Pump Spacer 1	3.5	10			148.0	PUMPED 10BBL FRESH WATER SPACER
12/05/2013 02:10		Pump Cement	5	108			118.0	MIXED AND PUMPED 392SKS OF SWIFCEM @ 14.2PPG. DENSITY WAS VERIFIED BY PRESSURIZED MUD SCALES
12/05/2013 02:40		Shutdown						
12/05/2013 02:41		Drop Top Plug						DROPPED TOP PLUG, WITNESSED BY ANADARKO REP.
12/05/2013 02:42		Pump Displacement	5	76			265.0	PUMPED 76BBLs OF FRESH WATER DISPLACEMENT. RECIEVED 13 BBLs OF CEMENT TO SURFACE
12/05/2013 03:06		Bump Plug						BUMPED PLUG 235@ PSI .HELD PRESSURE @ 1070 PSI
12/05/2013 03:07		Check Floats						RELEASED PRESSURE BACK TO PUMP TRUCK. RECIEVED .75 BBLs BACK TO TRUCK AND FLOATS HELD
12/05/2013 03:08		End Job						HELD A RIG DOWN SAFETY MEETING. DISCUSSED POTENTIAL HAZARDS AND COMMENCED RIG DOWN OF IRON. LEFT WET AND DRY SAMPLES ON LOCATION.

The Road to Excellence Starts with Safety

Sold To #: 300466	Ship To #: 3205829	Quote #:	Sales Order #: 900947076
Customer: ANADARKO PETROLEUM CORP - EBUS		Customer Rep: Hersh, Larry	
Well Name: Dreiling		Well #: 27N-32HZ	API/UWI #:
Field: WATTENBERG	City (SAP): IONE	County/Parish: Weld	State: Colorado
Contractor: Majors		Rig/Platform Name/Num: Majors 42	
Job Purpose: Cement Surface Casing			
Well Type: Development Well		Job Type: Cement Surface Casing	
Sales Person: PLIENESS, RYAN		Srvc Supervisor: WHIPPLE, WESLEY	MBU ID Emp #: 518611

Job Personnel

HES Emp Name	Exp Hrs	Emp #	HES Emp Name	Exp Hrs	Emp #	HES Emp Name	Exp Hrs	Emp #
ACEVEDO, ROBERTO Carlos	5.5	551312	NIELSON, BRANDON K	5.5	479703	STIELER, KENT	5.5	554541
WHIPPLE, WESLEY Morgan	5.5	518611						

Equipment

HES Unit #	Distance-1 way	HES Unit #	Distance-1 way	HES Unit #	Distance-1 way	HES Unit #	Distance-1 way
10679720C	10 mile	11036301	10 mile	11338223	10 mile	11812069C	10 mile
12010172	10 mile						

Job

Job Times

Formation Name				Date	Time	Time Zone
Formation Depth (MD)	Top		Bottom	Called Out	04 - Dec - 2013	18:40 MST
Form Type		BHST		On Location	04 - Dec - 2013	22:30 MST
Job depth MD	1049. ft	Job Depth TVD	1049. ft	Job Started	05 - Dec - 2013	01:53 MST
Water Depth		Wk Ht Above Floor	3. ft	Job Completed	05 - Dec - 2013	03:08 MST
Perforation Depth (MD)	From		To	Departed Loc	05 - Dec - 2013	04:00 MST

Well Data

Description	New / Used	Max pressure psig	Size in	ID in	Weight lbm/ft	Thread	Grade	Top MD ft	Bottom MD ft	Top TVD ft	Bottom TVD ft
13 1/2" Open Hole Section				13.5				.	1049.		
9 5/8" Surface Casing	Unknown		9.625	8.921	36.		J-55	.	1049.		

Sales/Rental/3rd Party (HES)

Description	Qty	Qty uom	Depth	Supplier
CMT CASING EQUIPMENT BOM	1	JOB		
MILEAGE FOR CEMENTING CREW,ZI	20	MI		
ZI FUEL SURCHG-CARS/PICKUPS<1 1/2TON	20	MI		
KIT,HALL WELD-A	1	EA		
Description	Qty	Qty uom	Depth	Supplier
CNTRLZR, 9 5/8"x13 3/4',#500-0963-1375	7	EA		
BASKET - CEMENT - 9-5/8 CSG X 12-1/4	1	EA		
PLUG,CMTG,TOP,9 5/8,HWE,8.16 MIN/9.06 MA	1	EA		
COLLAR-STOP-9 5/8"-FRICTION-HINGED	2	EA		

Fluid Data

Stage/Plug #: 1									
Fluid #	Stage Type	Fluid Name	Qty	Qty uom	Mixing Density lbm/gal	Yield ft ³ /sk	Mix Fluid Gal/sk	Rate bbl/min	Total Mix Fluid Gal/sk
1	Fresh Water Spacer		10.00	bbl	8.33			3.5	
2	Mud Flush		12.00	bbl	8.4			3.5	
3.5 lbm/bbl		MUD FLUSH III, 40 LB SACK (101633304)							
42 gal/bbl		MUD FLUSH III - SBM (528788)							
3	fresh water spacer		10.00	bbl	8.33			3.5	
4	SwiftCem B2	SWIFTCM (TM) SYSTEM (452990)	392.0	sacks	14.2	1.54	7.66	5.0	7.66
7.66 Gal		FRESH WATER							
Calculated Values		Pressures		Volumes					
Displacement		Shut In: Instant		Lost Returns		Cement Slurry		Pad	
Top Of Cement		5 Min		Cement Returns	13.0	Actual Displacement	76.0	Treatment	
Frac Gradient		15 Min		Spacers	32.0	Load and Breakdown		Total Job	
Rates									
Circulating		Mixing		Displacement		Avg. Job			
Cement Left In Pipe	Amount	45 ft	Reason	Shoe Joint					
Frac Ring # 1 @	ID	Frac ring # 2 @	ID	Frac Ring # 3 @	ID	Frac Ring # 4 @	ID		
The Information Stated Herein Is Correct				Customer Representative Signature					

