

Company: Anadarko E&P Onshore LLC

Well: Caboose 1548-21-44

Field: Wildcat

County: Cheyenne State: Colorado

Platform Express			
Caliper			
Cement Volume			
Location:		SESE Sec. 21, T15S, R48W	
SESE Sec. 21, T15S, R48W		Elev.: K.B. 4273.00 ft	
SHL: 675' FSL X 1100' FEL		G.L. 4254.00 ft	
D.F. 4272.00 ft			
Permanent Datum:		Ground Level	
Log Measured From:		Kelly Bushing	
Drilling Measured From:		Kelly Bushing	
API Serial No.		Section: 21	
05-017-07780-0000		Township: 15S	
		Range: 48W	

Logging Date	09-Feb-2014			
Run Number	Run 1: PEX-BHC-AIT-HNGS			
Depth Driller	5420.00 ft			
Schlumberger Depth	5416.00 ft			
Bottom Log Interval	5408.00 ft			
Top Log Interval	2778.00 ft			
Casing Driller Size @ Depth	9.625 in @ 2784.00 ft			
Casing Schlumberger	2778 ft			
Bit Size	8.75 in			
Type Fluid In Hole	Polymer			
MUD	Density	8.7 lbm/gal	44 s	
	Fluid Loss	8.2 cm3	9.2	
	Source of Sample	Active Tank		
RM @ Meas Temp	0.55 ohm.m @ 100 degF			
RMF @ Meas Temp	0.44 ohm.m @ 100 degF			
RMC @ Meas Temp	0.66 ohm.m @ 100 degF			
Source RMF	RMC		Pressed	
RM @ BHT	RMF @ BHT	0.35 @ 160	0.28 @ 160	
Max Recorded Temperatures				
Circulation Stopped				
Time				
Logger on Bottom				
Unit Number	Location:	3022	Ft. Morgan, CO	
Recorded By	Tim Hoffman			
Witnessed By	Stuart Nelson			

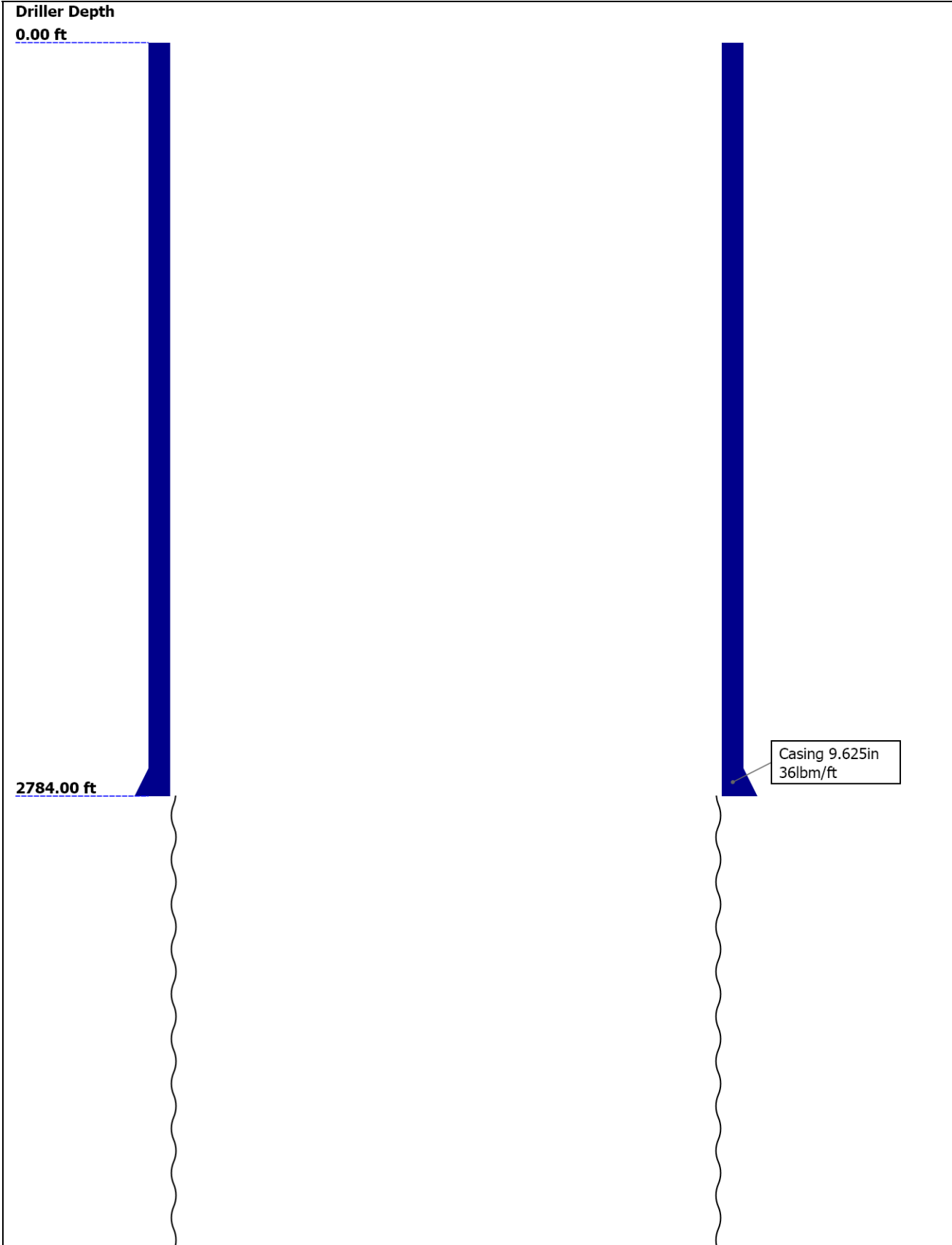
Disclaimer

THE USE OF AND RELIANCE UPON THIS RECORDED-DATA BY THE HEREIN NAMED COMPANY (AND ANY OF ITS AFFILIATES, PARTNERS, REPRESENTATIVES, AGENTS, CONSULTANTS AND EMPLOYEES) IS SUBJECT TO THE TERMS AND CONDITIONS AGREED UPON BETWEEN SCHLUMBERGER AND THE COMPANY, INCLUDING: (a) RESTRICTIONS ON USE OF THE RECORDED-DATA; (b) DISCLAIMERS AND WAIVERS OF WARRANTIES AND REPRESENTATIONS REGARDING COMPANY'S USE AND RELIANCE UPON THE RECORDED-DATA; AND (c) CUSTOMER'S FULL AND SOLE RESPONSIBILITY FOR ANY INFERENCE DRAWN OR DECISION MADE IN CONNECTION WITH THE USE OF THIS RECORDED-DATA.

Contents

- 1. Header
- 2. Disclaimer
- 3. Contents
- 4. Well Sketch
- 5. Borehole Size/Casing/Tubing Record
- 6. Borehole Fluids
- 7. Survey Record
- 8. Composite1
  - 8.1 Integration Summary
  - 8.2 Software Version
  - 8.3 Composite Summary
  - 8.4 Log ( Noble East Caliper )
  - 8.5 Parameter Listing
- 9. Tail

Well Sketch



5420.00 ft

Open Hole 8.75in

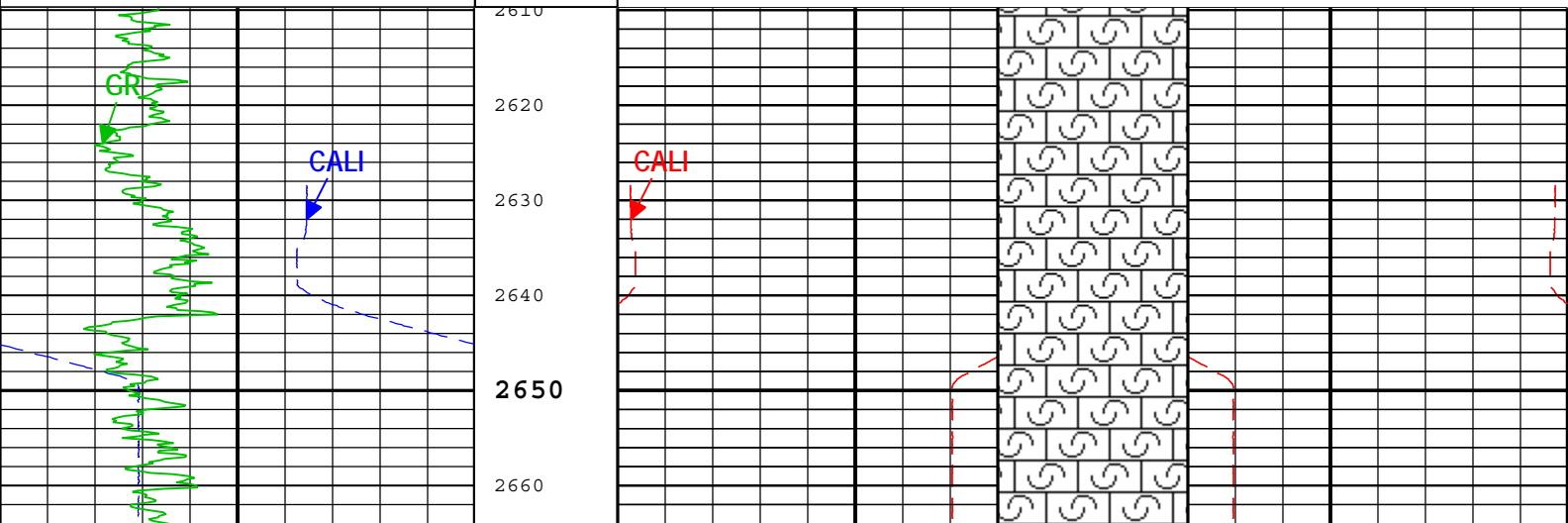
## Borehole Size/Casing/Tubing Record

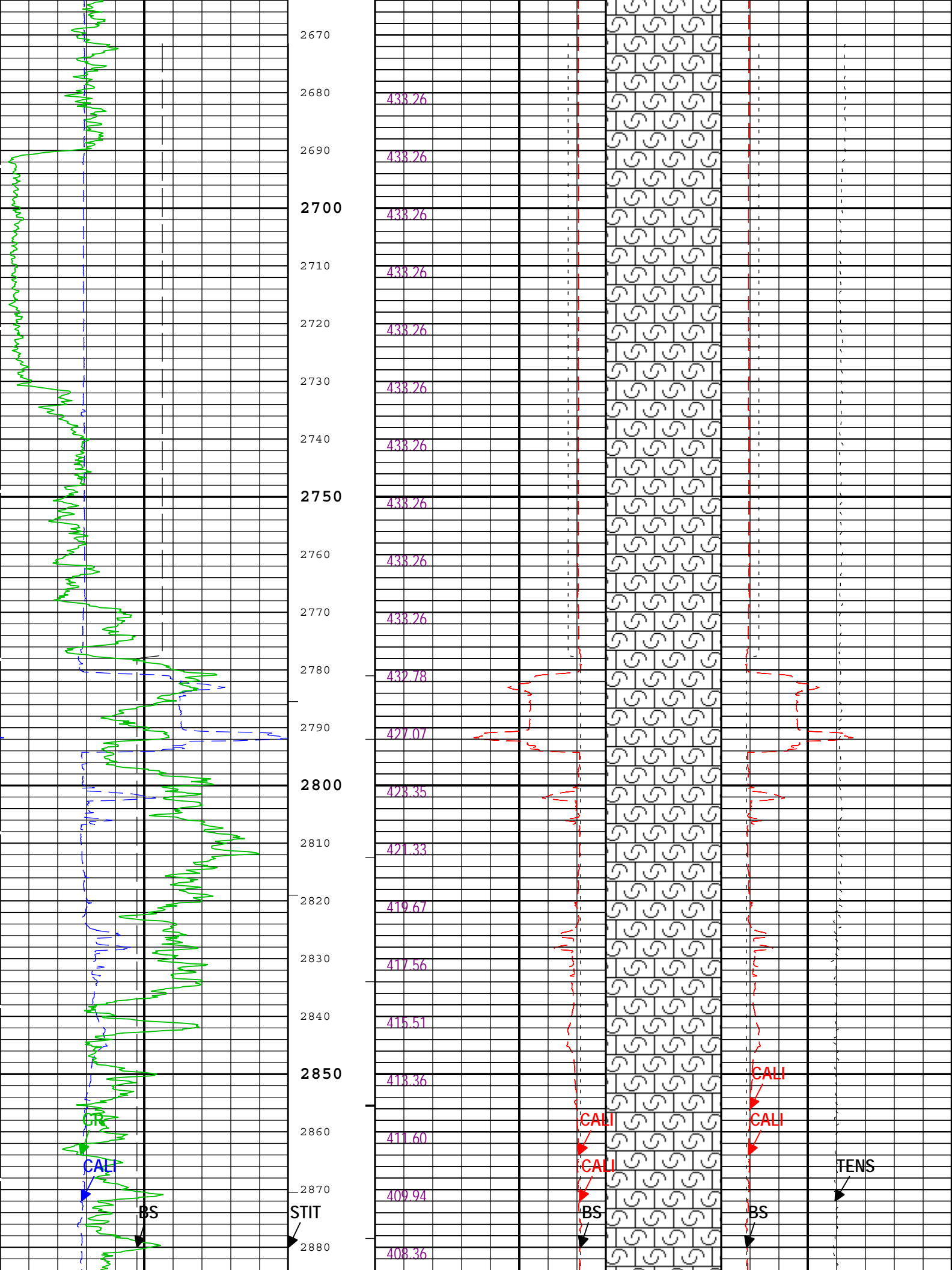
Bit						
Bit Size ( in )	8.75					
Top Driller ( ft )	2784					
Top Logger ( ft )	2778					
Bottom Driller ( ft )	5420					
Bottom Logger ( ft )	5416					
Casing						
Size ( in )	9.625					
Weight ( lbm/ft )	36					
Inner Diameter ( in )	8.921					
Grade	P110					
Top Driller ( ft )	0					
Top Logger ( ft )	0					
Bottom Driller ( ft )	2784					
Bottom Logger ( ft )	2778					

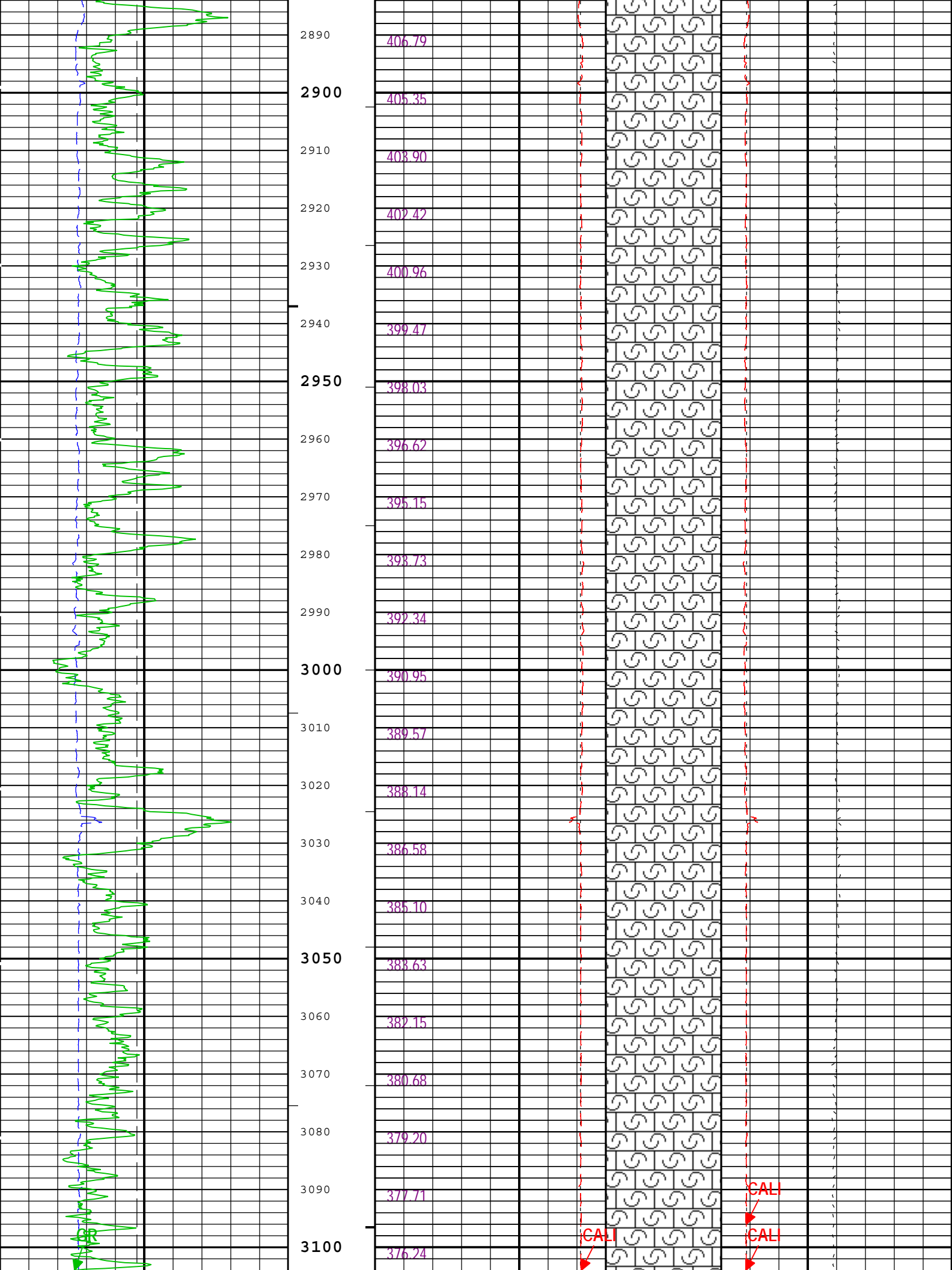
## Borehole Fluids

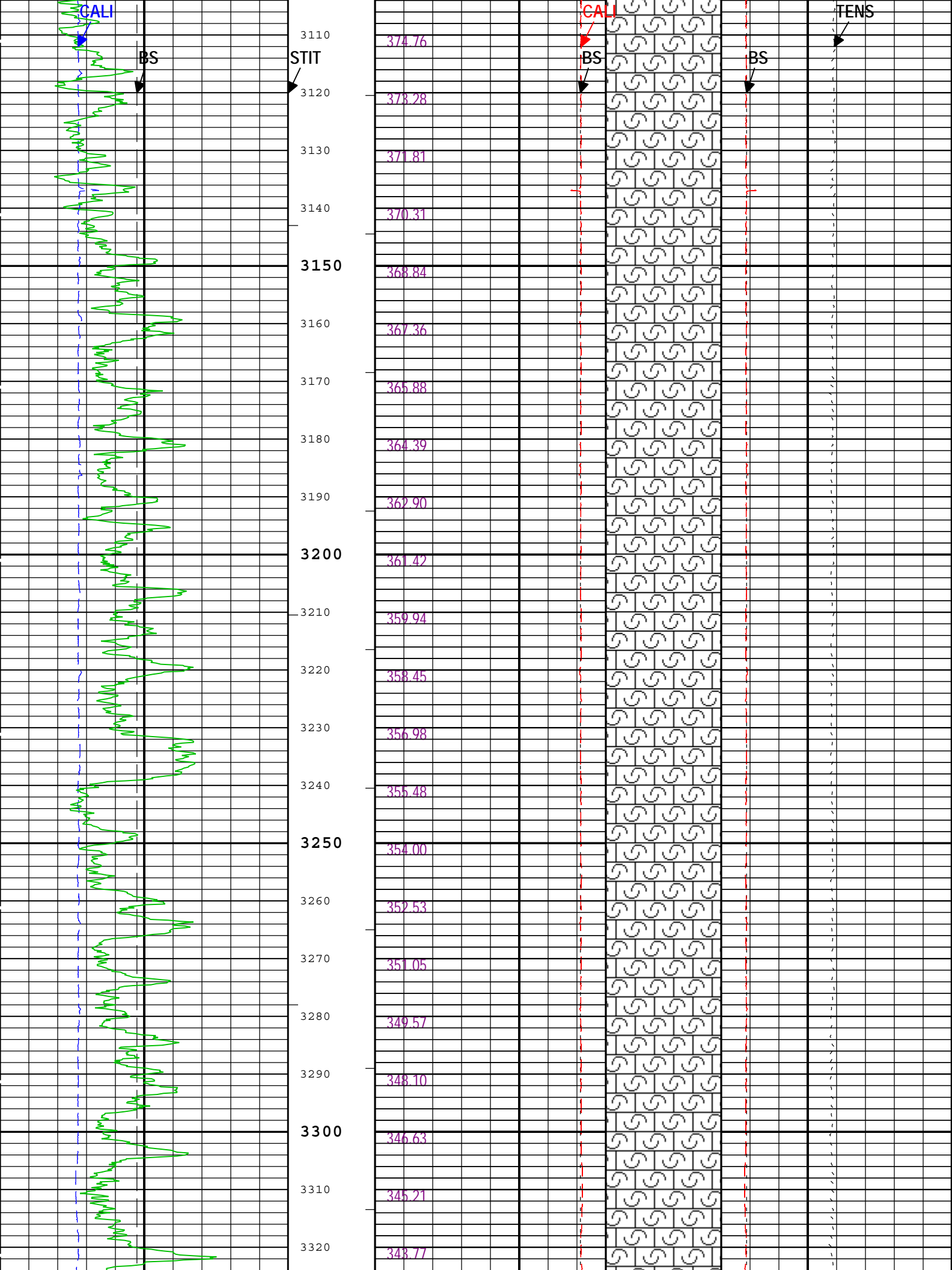
Parameter( unit )	Run1: PEX-BHC-AIT-HNGS					
Fluid Type	Water					
Fluid Name	Polymer					
Max Recorded Temperatures ( degF )	153					
Source of Sample	Active Tank					
Salinity ( ppm )	1700					
Density ( lbm/gal )	8.7					
Funnel Viscosity ( s )	44					
Fluid Loss ( cm3 )	8.2					
PH	9.2					
Date/Time Circulation Stopped	NaN					
Date Logger on Bottom	NaN					
Time Logger on Bottom	NaN					
Source RMF						
RMC	Pressed					
RM @ Meas Temp ( ohm.m@degF )	0.55 @ 100					
RMF @ Meas Temp	0.44 @ 100					



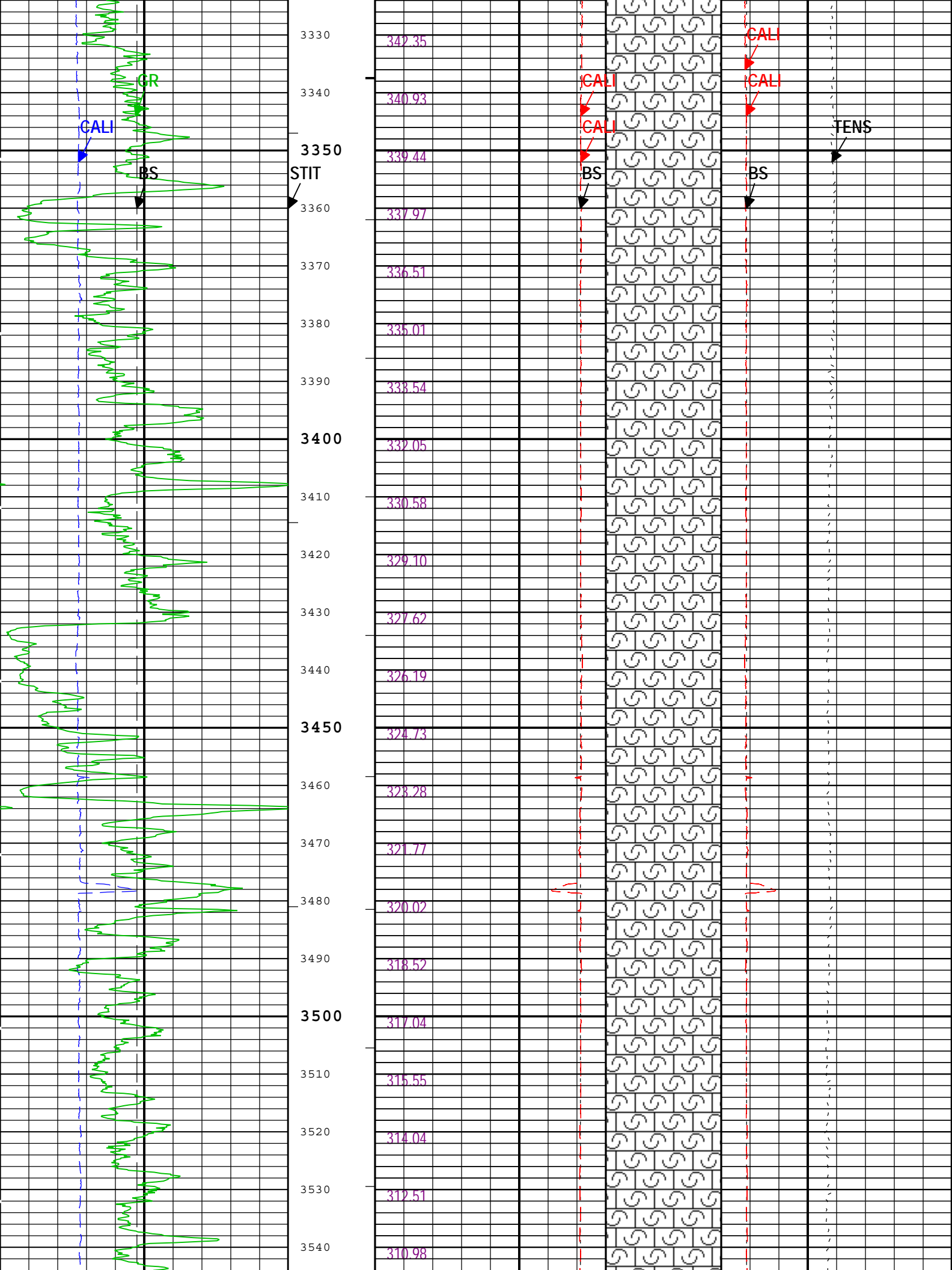


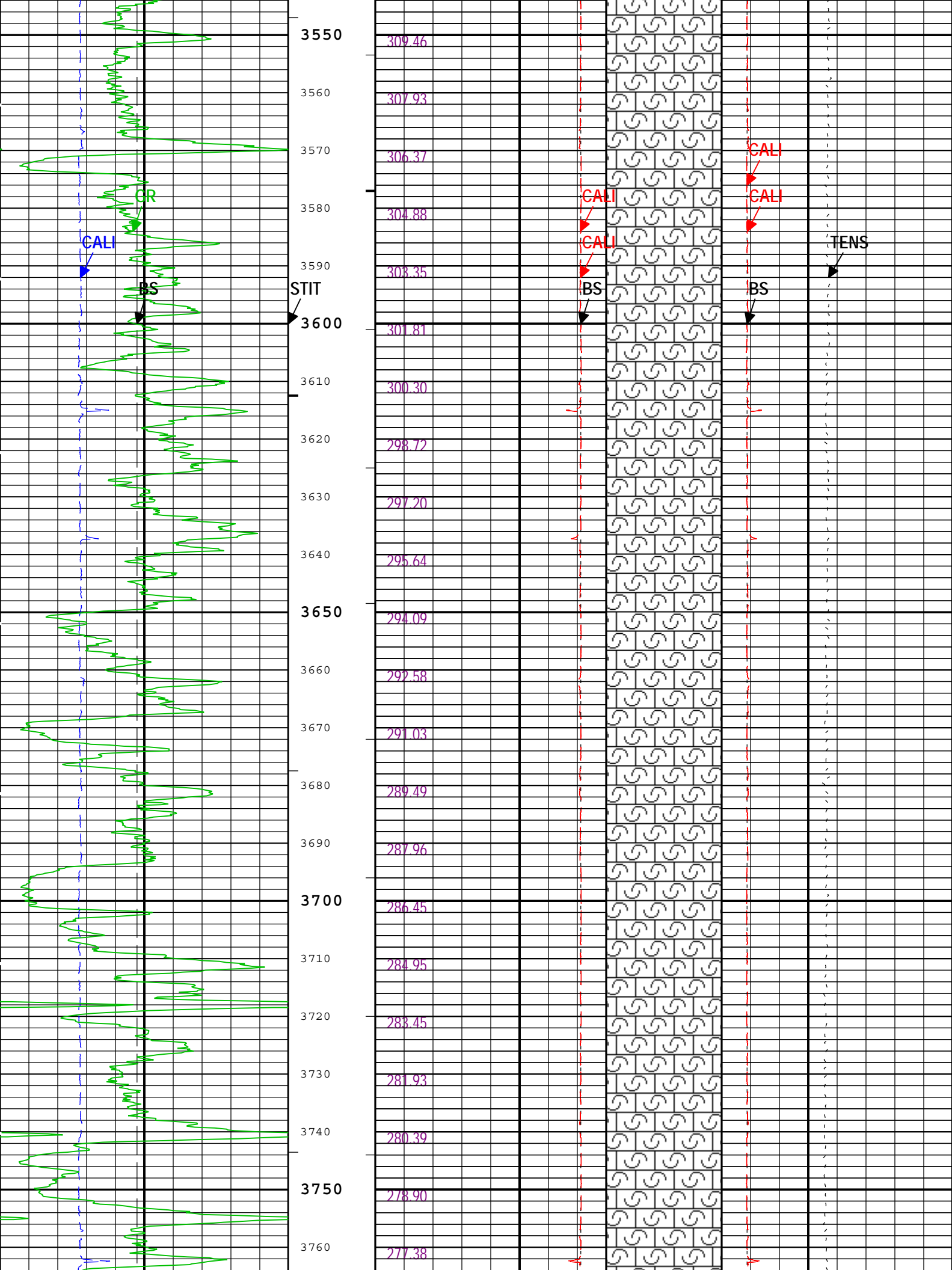


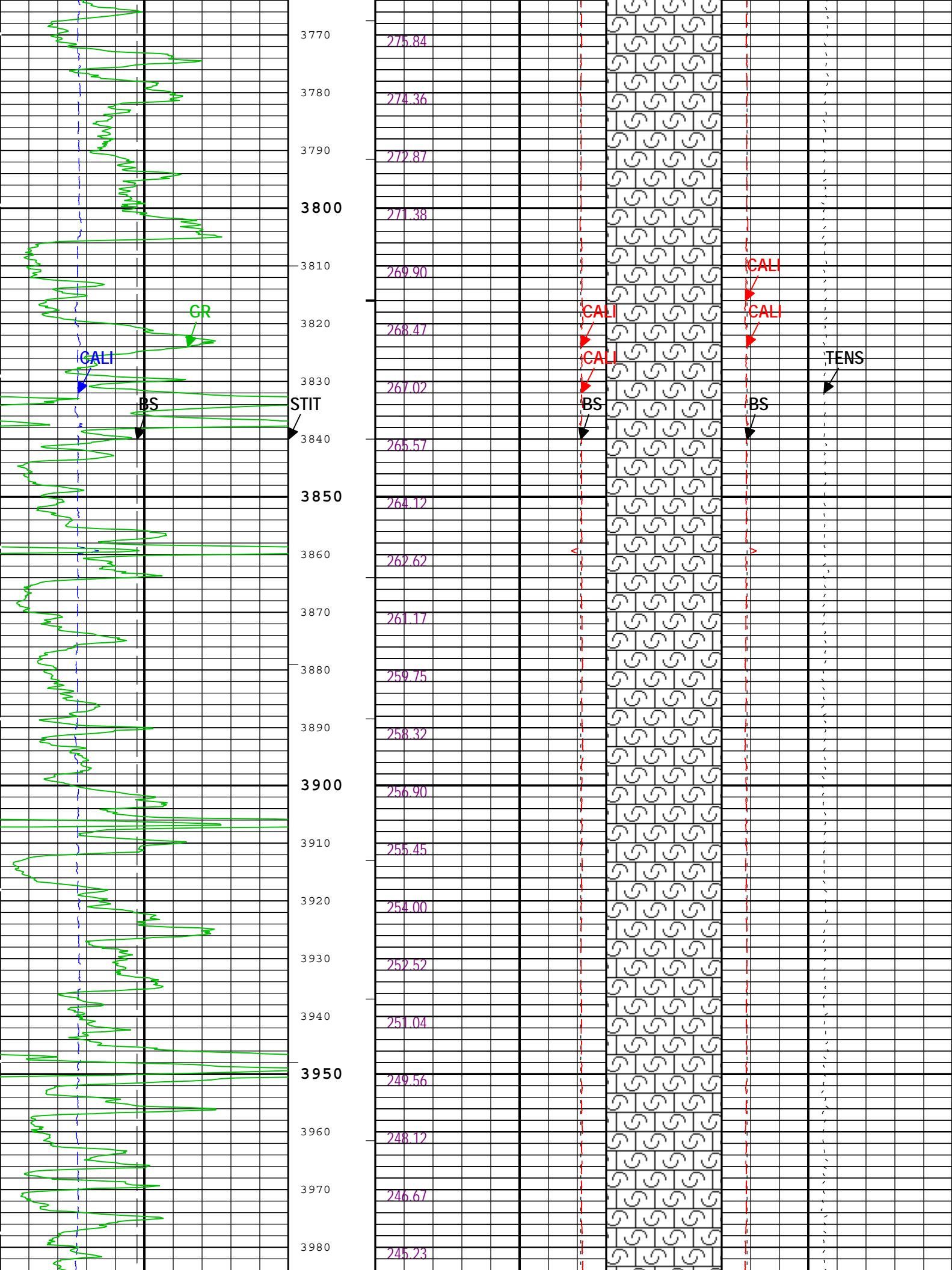


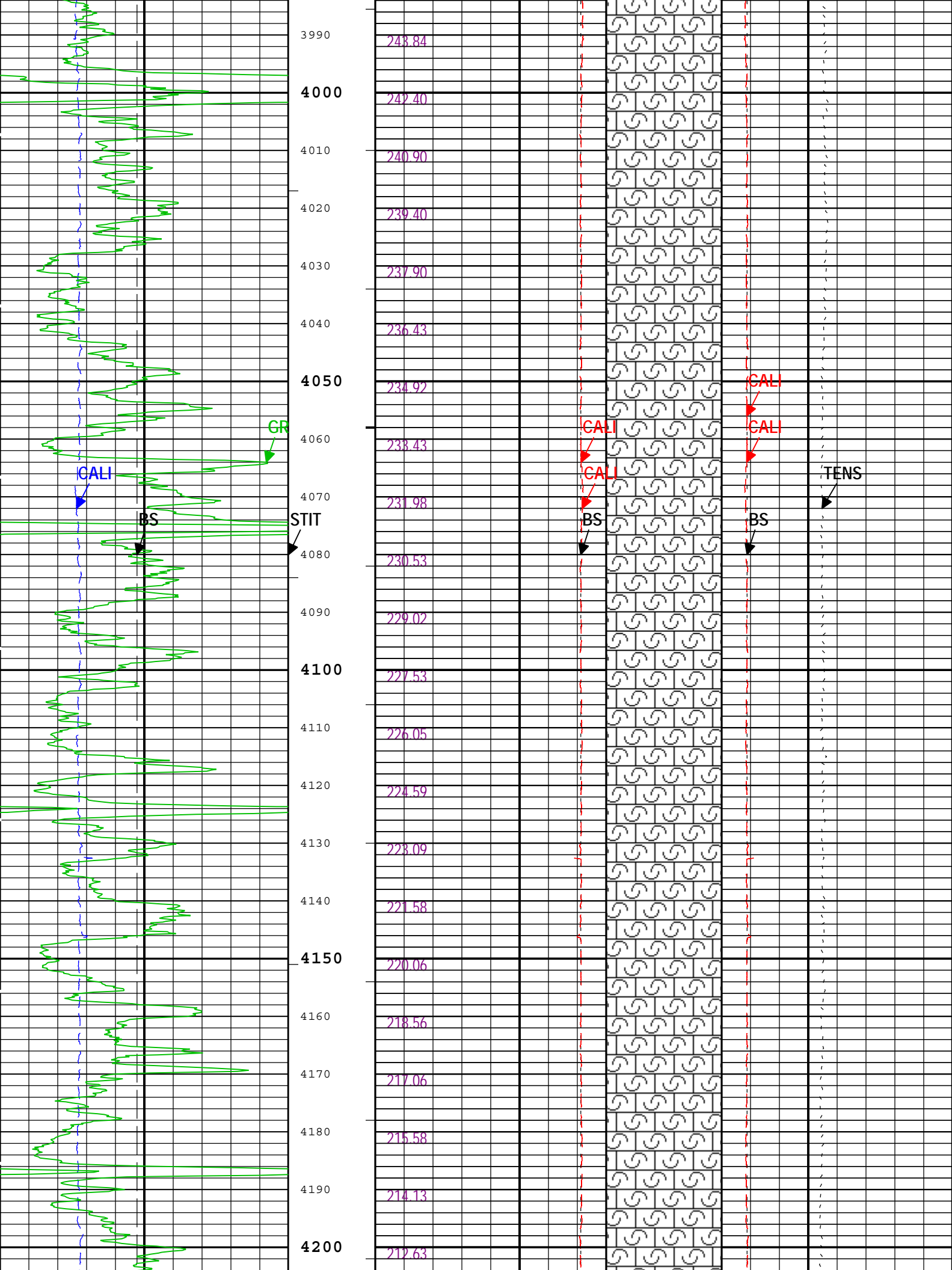


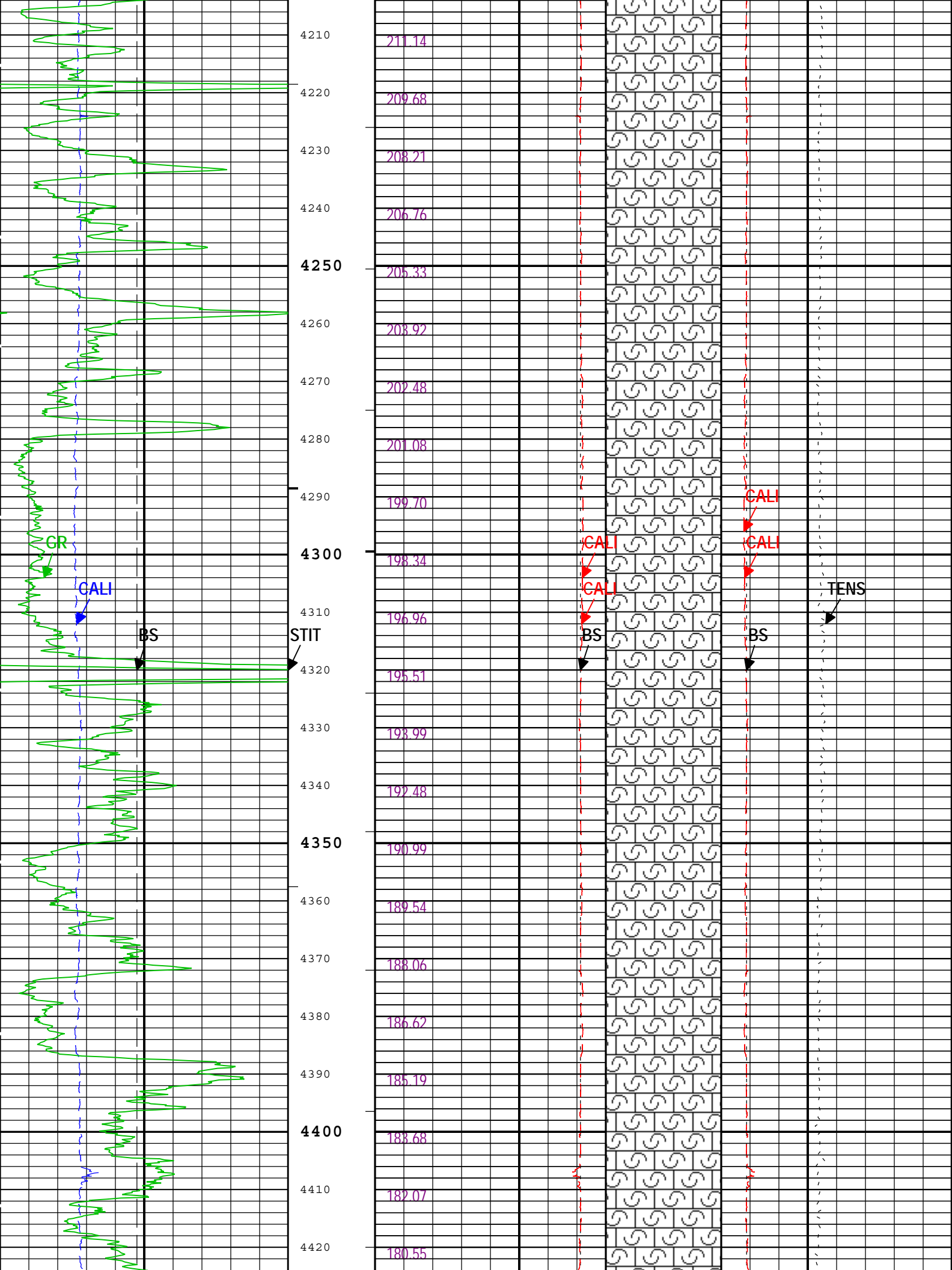


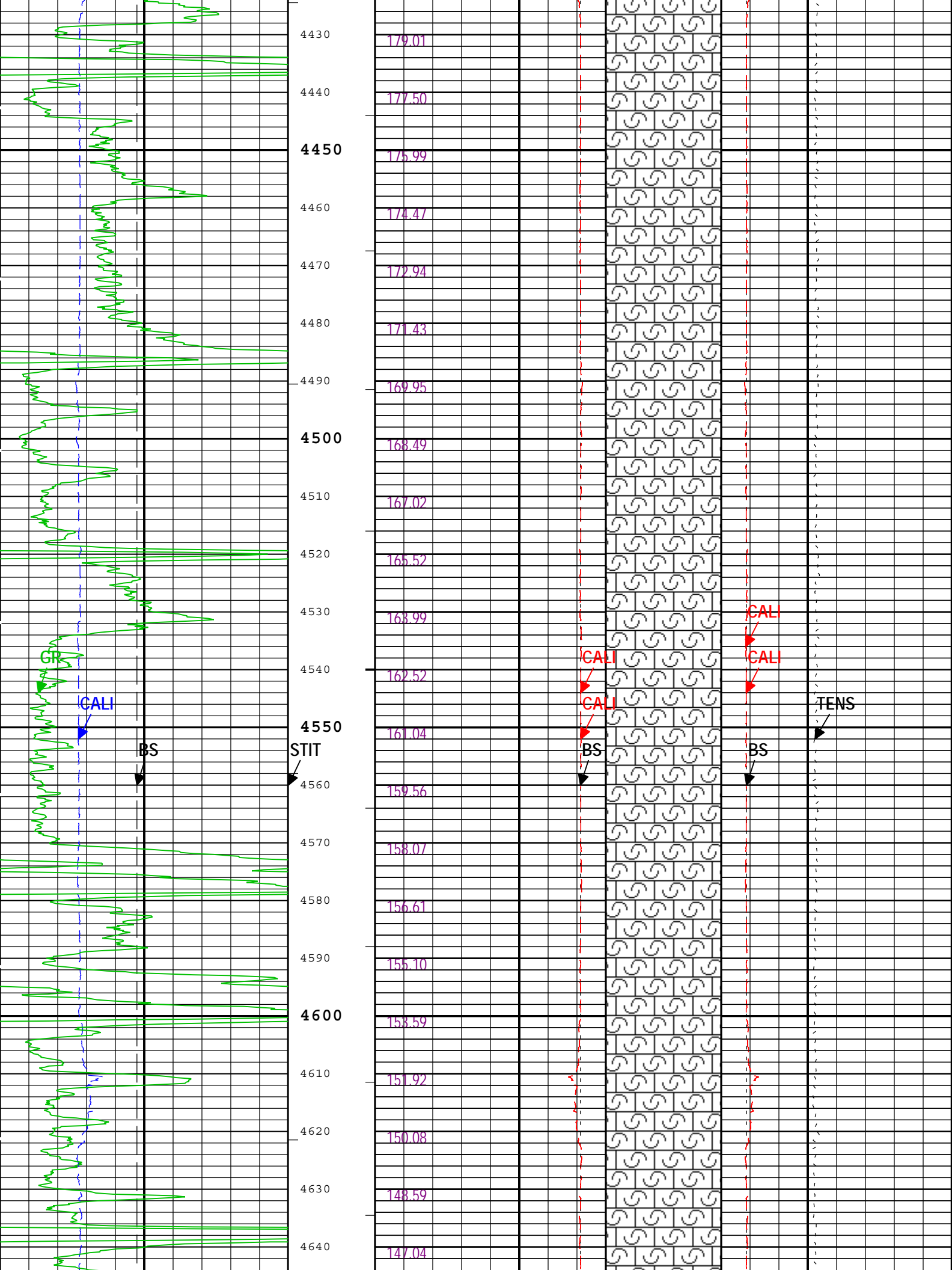


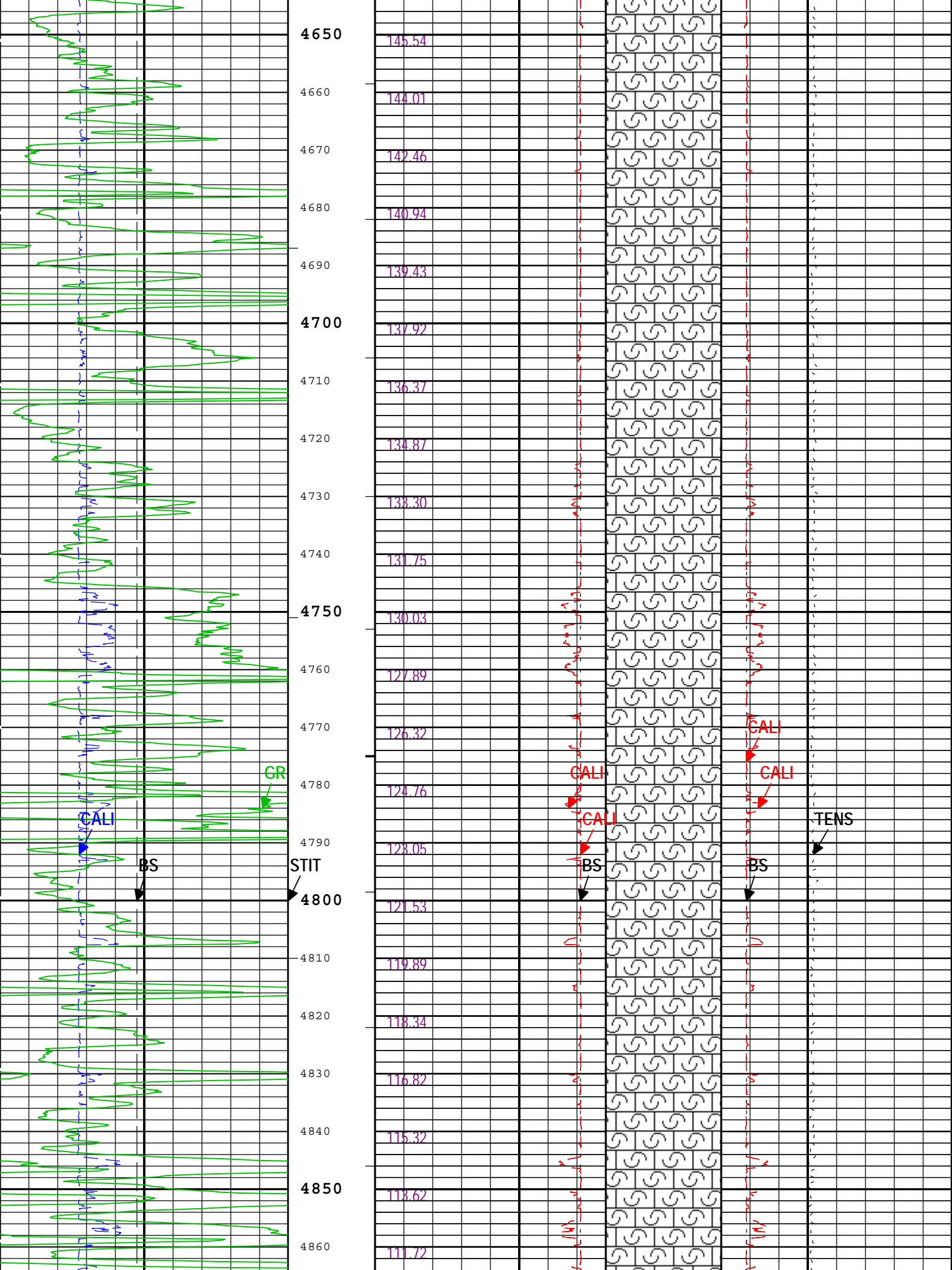


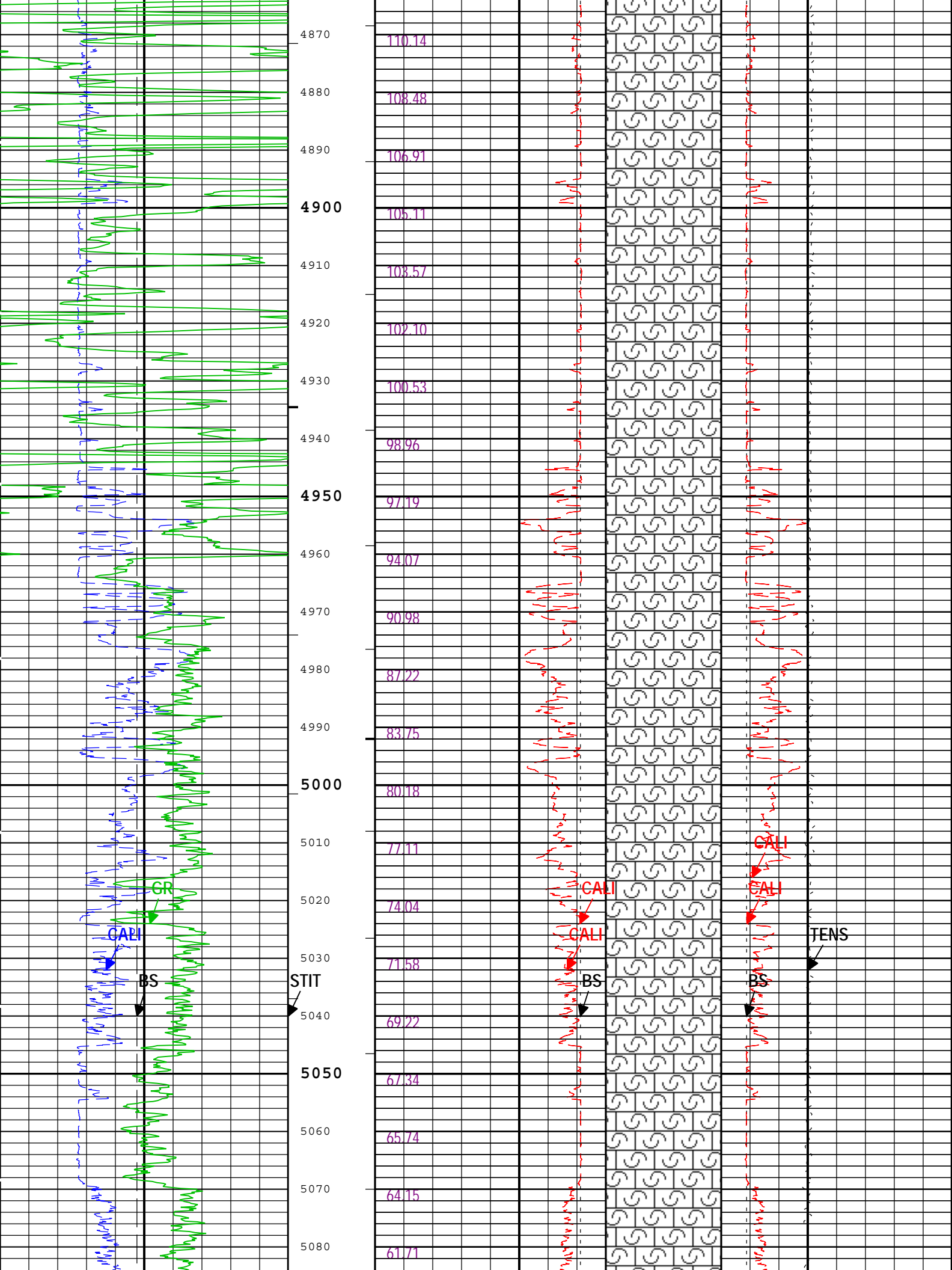




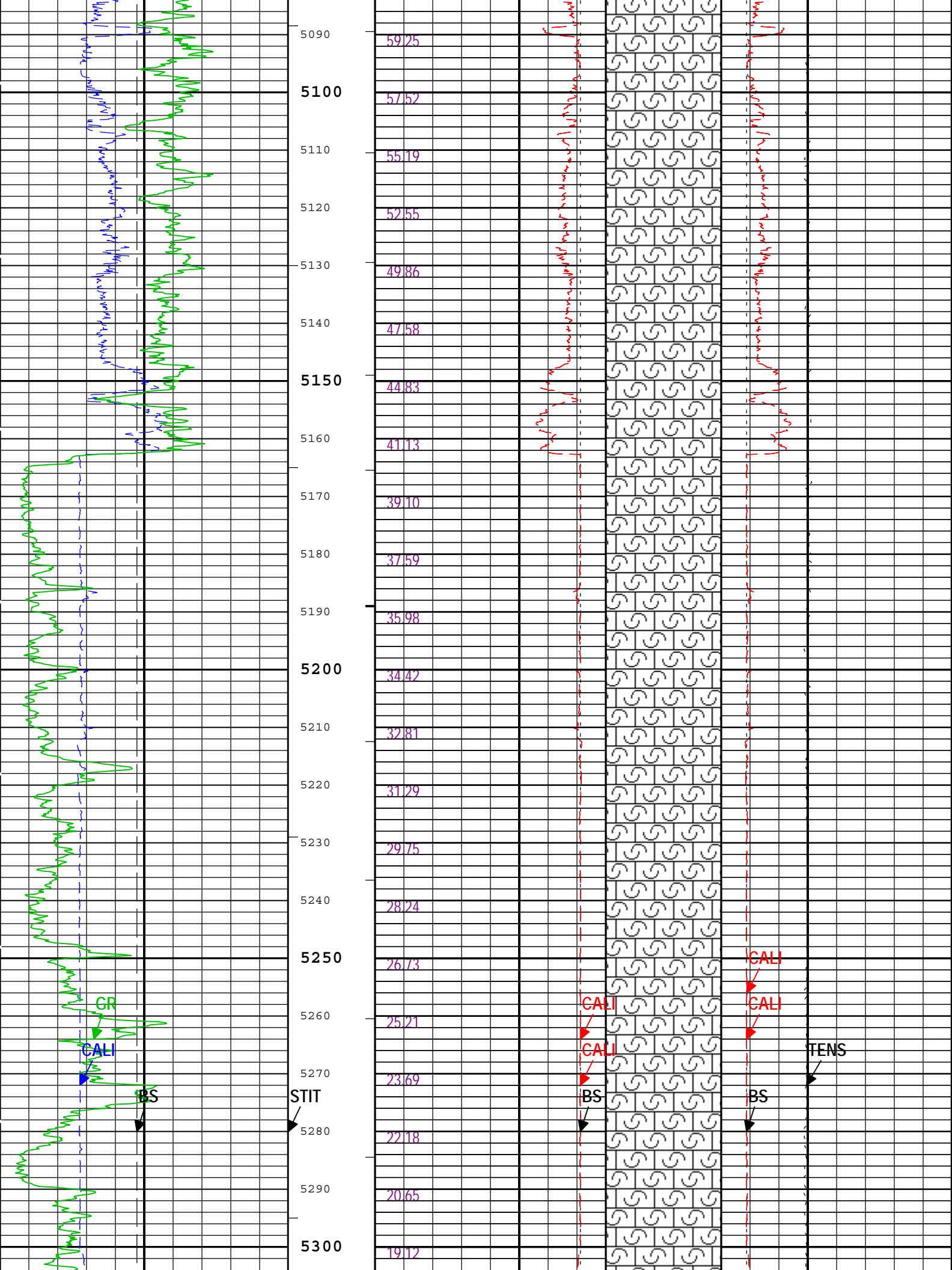


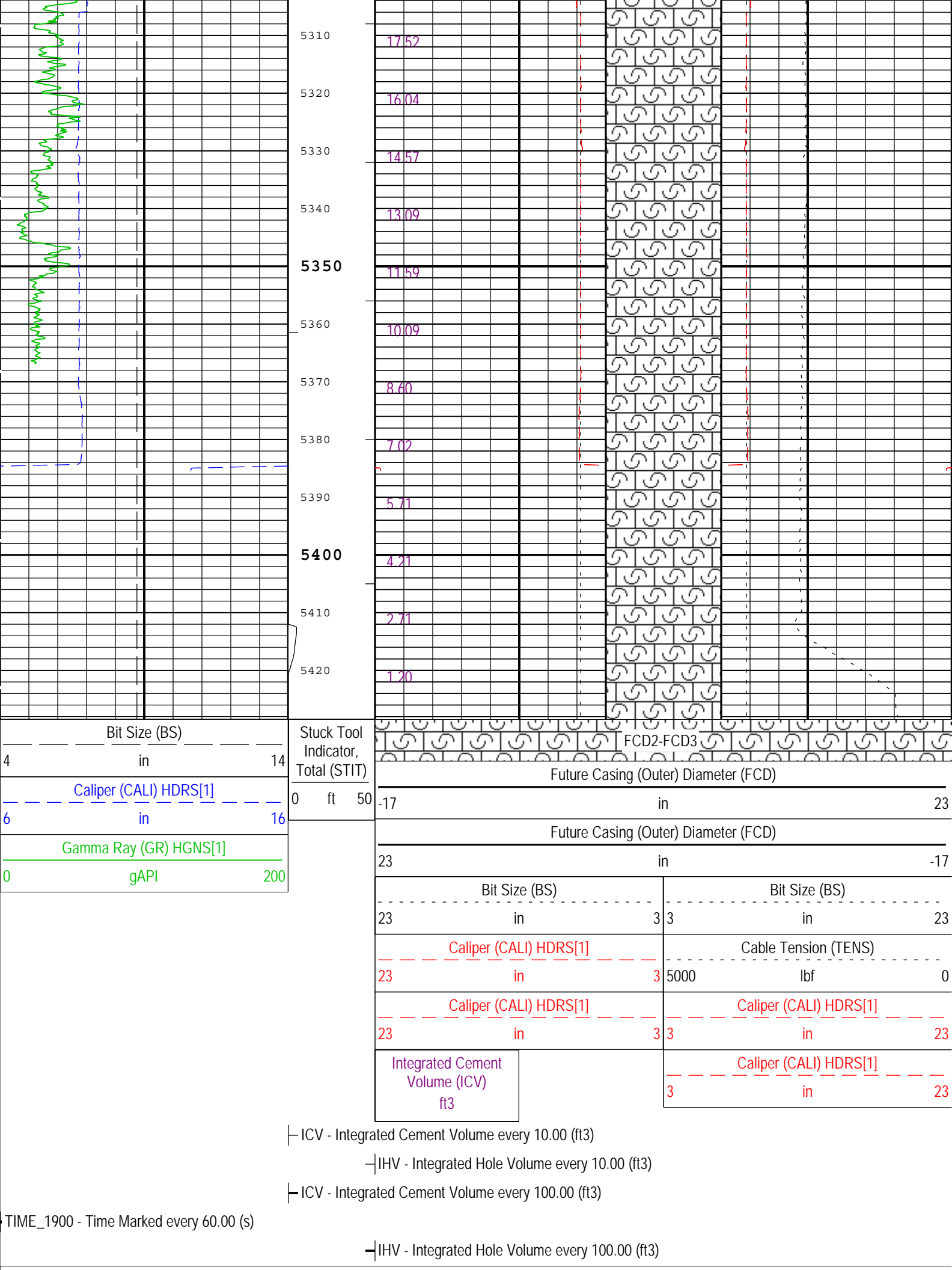












Channel Processing Parameters				
Run1: PEX-BHC-AIT-HNGS: Parameters				
Parameter	Description	Tool	Value	Unit
BARI	Barite Mud Presence Flag	Borehole	No	
BHS	Borehole Status (Open or Cased Hole)	Borehole	Open	
BS	Bit Size	WLSESSION	8.75	in
CALI_SHIFT	CALI Supplementary Offset	HDRS-B	0.08	in
CBLO	Casing Bottom (Logger)	WLSESSION	2778	ft
CDEN	Cement Density	HGNS-B	2	g/cm3
CSODDRL	Casing Outer Diameter - Zoned along driller depths	WLSESSION	9.625	in
DFD	Drilling Fluid Density	Borehole	8.7	lbm/gal
FCD	Future Casing (Outer) Diameter	WLSESSION	7	in
GCSE_DOWN_PASS	Generalized Caliper Selection for WL Log Down Passes	Borehole	BS	
GCSE_UP_PASS	Generalized Caliper Selection for WL Log Up Passes	Borehole	CALI	
SOCO	Standoff Correction Option	HGNS-B	Yes	
TD	Total Measured Depth	Borehole	5420	ft

Tool Control Parameters				
Run1: PEX-BHC-AIT-HNGS: Parameters				
Parameter	Description	Tool	Value	Unit
MAX_LOG_SPEED	Toolstring Maximum Logging Speed	WLSESSION	1800	ft/h

Company:	Anadarko E&P Onshore LLC	Schlumberger
Well:	Caboose 1548-21-44	
Field:	Wildcat	
County:	Cheyenne	
State:	Colorado	

Platform Express  
Caliper  
Cement Volume