

T7S, R96W, 6th P.M.

WPX Energy Rocky Mountain, LLC

Well location, GM 706-4-HN2 (SURFACE LOCATION), located as shown in Lot 5 of Section 4, T7S, R96W, 6th P.M., Garfield County, Colorado.

### BASIS OF ELEVATION

SPOT ELEVATION AT THE NORTHWEST CORNER OF SECTION 30, T5S, R95W, 6th P.M. TAKEN FROM THE FORKED GULCH QUADRANGLE, COLORADO, GARFIELD COUNTY, 7.5 MINUTE SERIES (TOPOGRAPHICAL MAP) PUBLISHED BY THE UNITED STATES DEPARTMENT OF THE INTERIOR, GEOLOGICAL SURVEY. SAID ELEVATION IS MARKED AS BEING 5966 FEET.

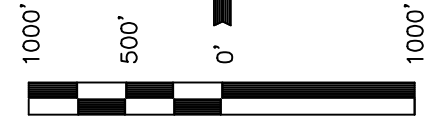
### BASIS OF BEARINGS

BASIS OF BEARINGS IS A G.P.S. OBSERVATION.

NOTE:  
SEE CURRENT FOOTAGE PLAT #6 FOR  
EXISTING IMPROVEMENT WITHIN 500'  
OF THE PROPOSED WELL HEAD.



PLAT #1



SCALE  
CERTIFICATE

THIS IS TO CERTIFY THAT THE ABOVE PLAT WAS PREPARED AND LOCATION AS SHOWN WAS STAKED ON THE GROUND FROM FIELD NOTES OF ACTUAL SURVEYS MADE BY ME OR UNDER MY SUPERVISION AND THAT THE SAME ARE TRUE AND CORRECT TO THE BEST OF MY KNOWLEDGE AND BELIEF.

REVISIT  
REGISTERED LAND SURVEYOR  
REGISTRATION NO. 17492  
STATE OF COLORADO 03-05-14

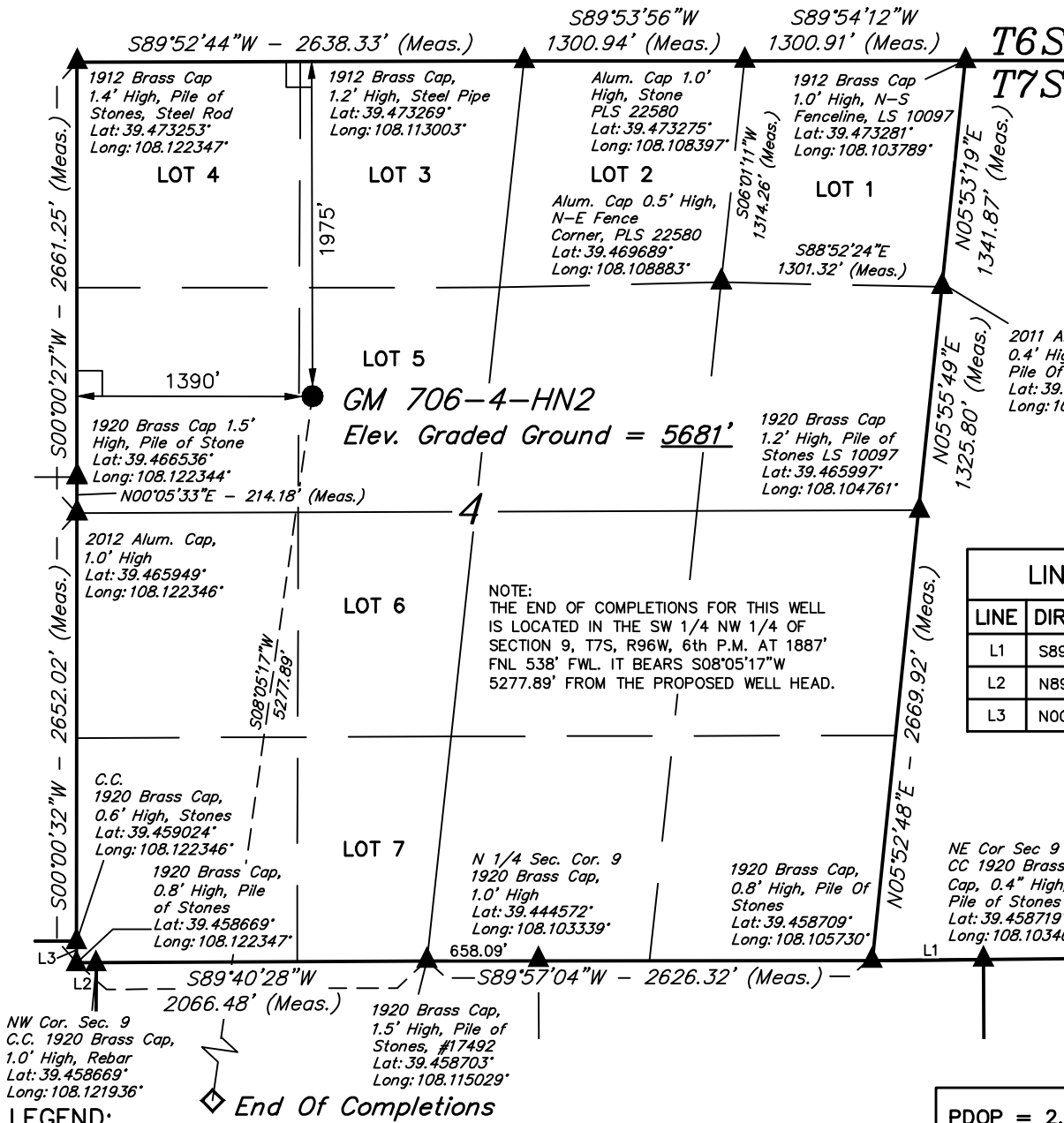
REVISED: 03-05-14  
REVISED: 11-19-13  
REVISED: 11-18-13  
REVISED: 11-06-13

**UINTAH ENGINEERING & LAND SURVEYING**  
**85 SOUTH 200 EAST - VERNAL, UTAH 84078**  
(435) 789-1017

SCALE 1" = 1000'	DATE SURVEYED: 05-02-13	DATE DRAWN: 10-16-13
PARTY BEN JOHNSON B.B. M.D.	REFERENCES G.L.O. PLAT	
WEATHER COOL	FILE WPX Energy Rocky Mountain, LLC	

PDOP = 2.8

NAD 83 (SURFACE LOCATION)	
LATITUDE	= 39°28'04.23" (39.467842)
LONGITUDE	= 108°07'02.72" (108.117422)
STATE PLANE-(COLO. CENTRAL-NAD 83)	
N	= 1605934.72
E	= 2261168.75



- LEGEND:**
- └─┘ = 90° SYMBOL
  - = PROPOSED WELL HEAD.
  - ▲ = SECTION CORNERS LOCATED.

Surface Location ● T7S, R96W, 6th P.M.

WPX Energy Rocky Mountain, LLC

SW Cor. Sec. 4  
1920 Brass Cap,  
0.8' High, Pile  
of Stones  
Lat: 39.458669°  
Long: 108.122347°

C.C. 1920 Brass Cap,  
1.0' High, Rebar  
Lat: 39.458669°  
Long: 108.121936°

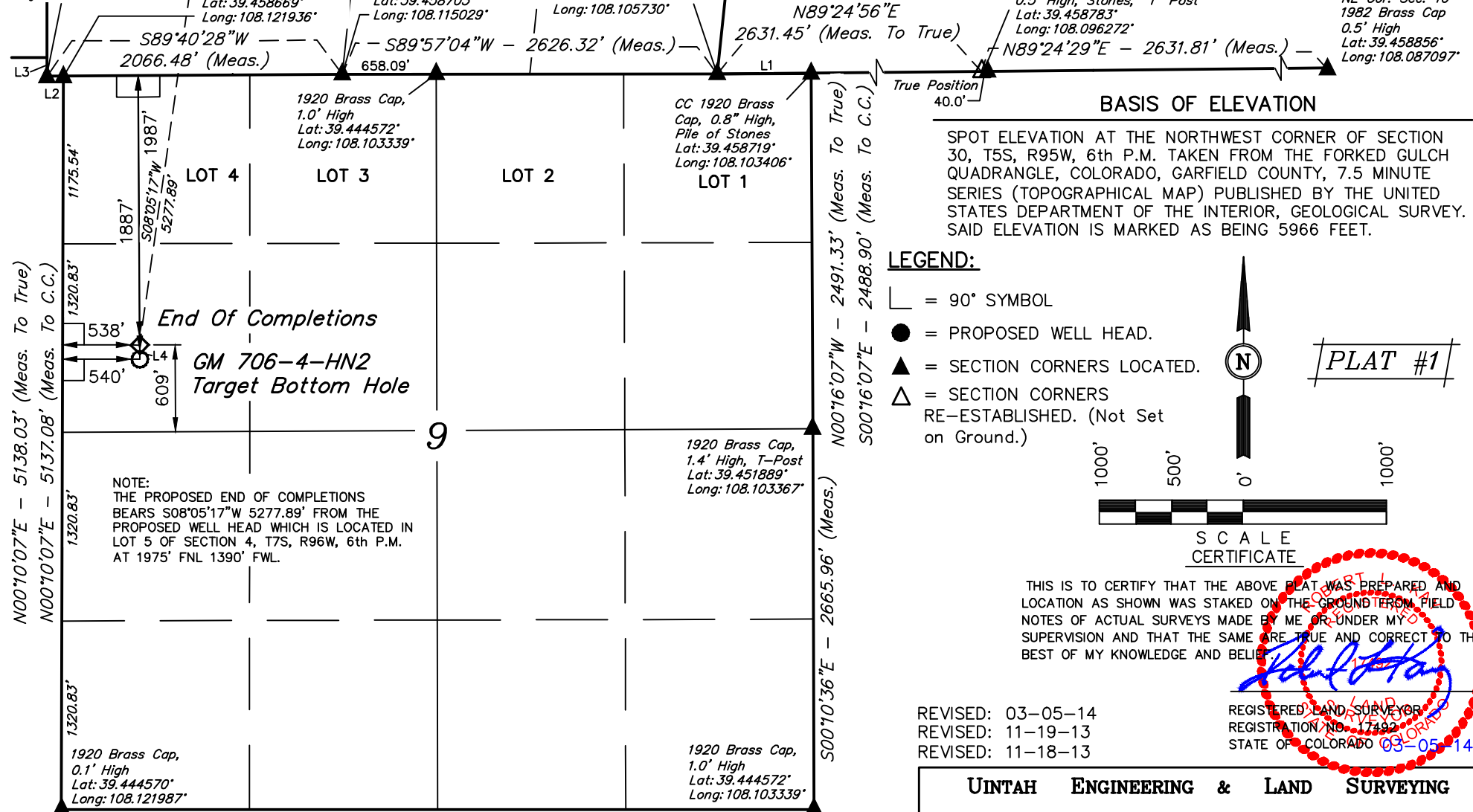
S 1/4 Cor. Sec. 4  
1920 Brass Cap,  
1.5' High,  
Pile of Stones,  
#17492  
Lat: 39.458703°  
Long: 108.115029°

SE Cor. Sec. 4  
1920 Brass Cap,  
1.5' High, Pile Of Stones  
Lat: 39.458709°  
Long: 108.105730°

Well location, GM 706-4-HN2 (TARGET BOTTOM HOLE),  
located as shown in the SW 1/4 NW 1/4 of Section 9,  
T7S, R96W, 6th P.M., Garfield County, Colorado.

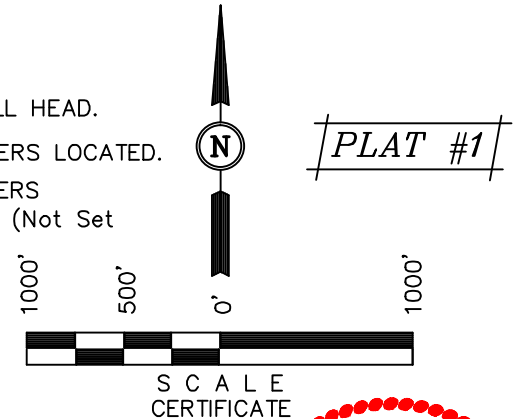
W.C. 1981 Brass Cap,  
0.5' High, Stones, "T" Post  
Lat: 39.458783°  
Long: 108.096272°

NE Cor. Sec. 10  
1982 Brass Cap  
0.5' High  
Lat: 39.458856°  
Long: 108.087097°



LEGEND:

- └ = 90° SYMBOL
- = PROPOSED WELL HEAD.
- ▲ = SECTION CORNERS LOCATED.
- △ = SECTION CORNERS RE-ESTABLISHED. (Not Set on Ground.)



THIS IS TO CERTIFY THAT THE ABOVE PLAT WAS PREPARED AND  
LOCATION AS SHOWN WAS STAKED ON THE GROUND FROM FIELD  
NOTES OF ACTUAL SURVEYS MADE BY ME OR UNDER MY  
SUPERVISION AND THAT THE SAME ARE TRUE AND CORRECT TO THE  
BEST OF MY KNOWLEDGE AND BELIEF.

REVISED: 03-05-14  
REVISED: 11-19-13  
REVISED: 11-18-13

REGISTERED LAND SURVEYOR  
REGISTRATION NO. 17492  
STATE OF COLORADO 03-05-14

UINTAH ENGINEERING & LAND SURVEYING  
85 SOUTH 200 EAST - VERNAL, UTAH 84078  
(435) 789-1017

LINE TABLE		
LINE	DIRECTION	LENGTH
L1	S89°37'41"W	656.34'
L2	N89°51'16"W	115.68'
L3	N00°02'55"E	129.07'
L4	S00°19'32"E	100.00'

BASIS OF BEARINGS  
BASIS OF BEARINGS IS A G.P.S. OBSERVATION.

NAD 83 (END OF COMPLETIONS)	NAD 83 (TARGET BOTTOM HOLE)
LATITUDE = 39°27'12.60" (39.453500)	LATITUDE = 39°27'11.61" (39.453225)
LONGITUDE = 108°07'12.18" (108.120050)	LONGITUDE = 108°07'12.16" (108.120044)
STATE PLANE-(COLO. CENTRAL-NAD 83)	STATE PLANE-(COLO. CENTRAL-NAD 83)
N = 1600734.47 E = 2260276.76	N = 1600634.73 E = 2260275.70

SCALE 1" = 1000'	DATE SURVEYED: 05-02-13	DATE DRAWN: 10-16-13
PARTY BEN JOHNSON B.B. M.D.	REFERENCES G.L.O. PLAT	
WEATHER COOL	FILE WPX Energy Rocky Mountain, LLC	