

BILL BARRETT CORPORATION

WELD COUNTY, COLORADO

SEC 22 T5N R62W 6th P.M.

**ANSCHUTZ STATE #5-62-27-0857BH - Slot PROP HZ AS
#5-62-27-0857BH**

11 January, 2014

Survey: FINAL SURVEYS





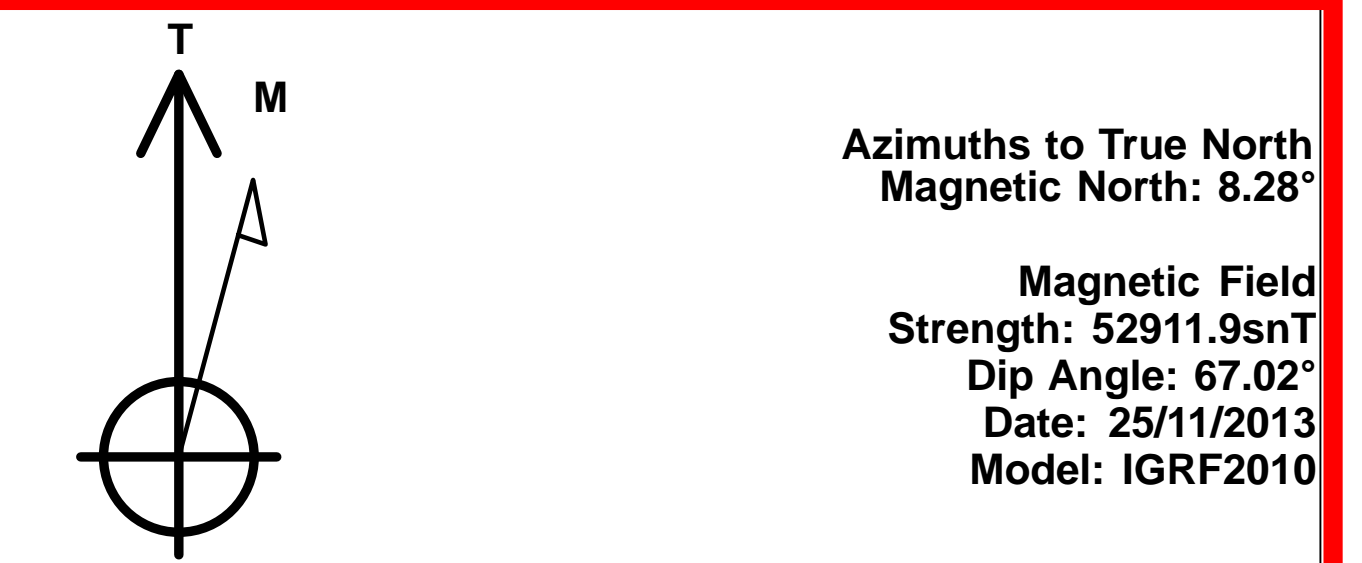
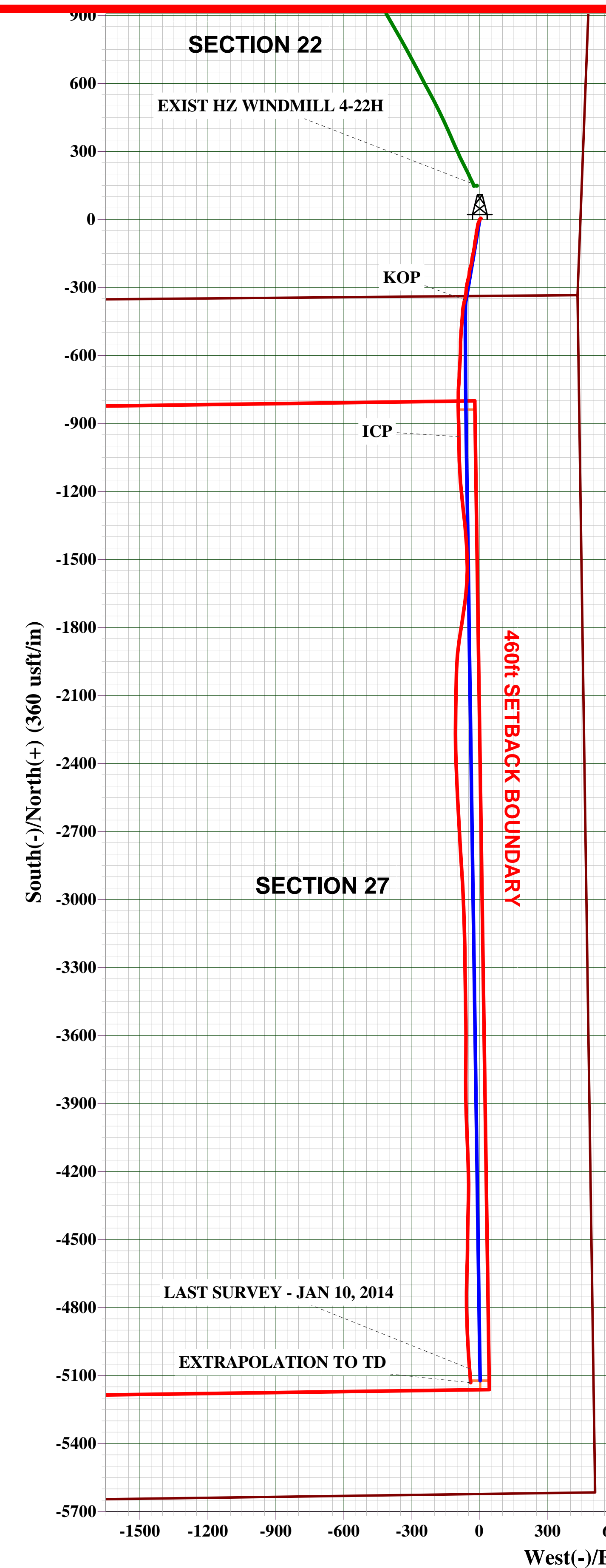
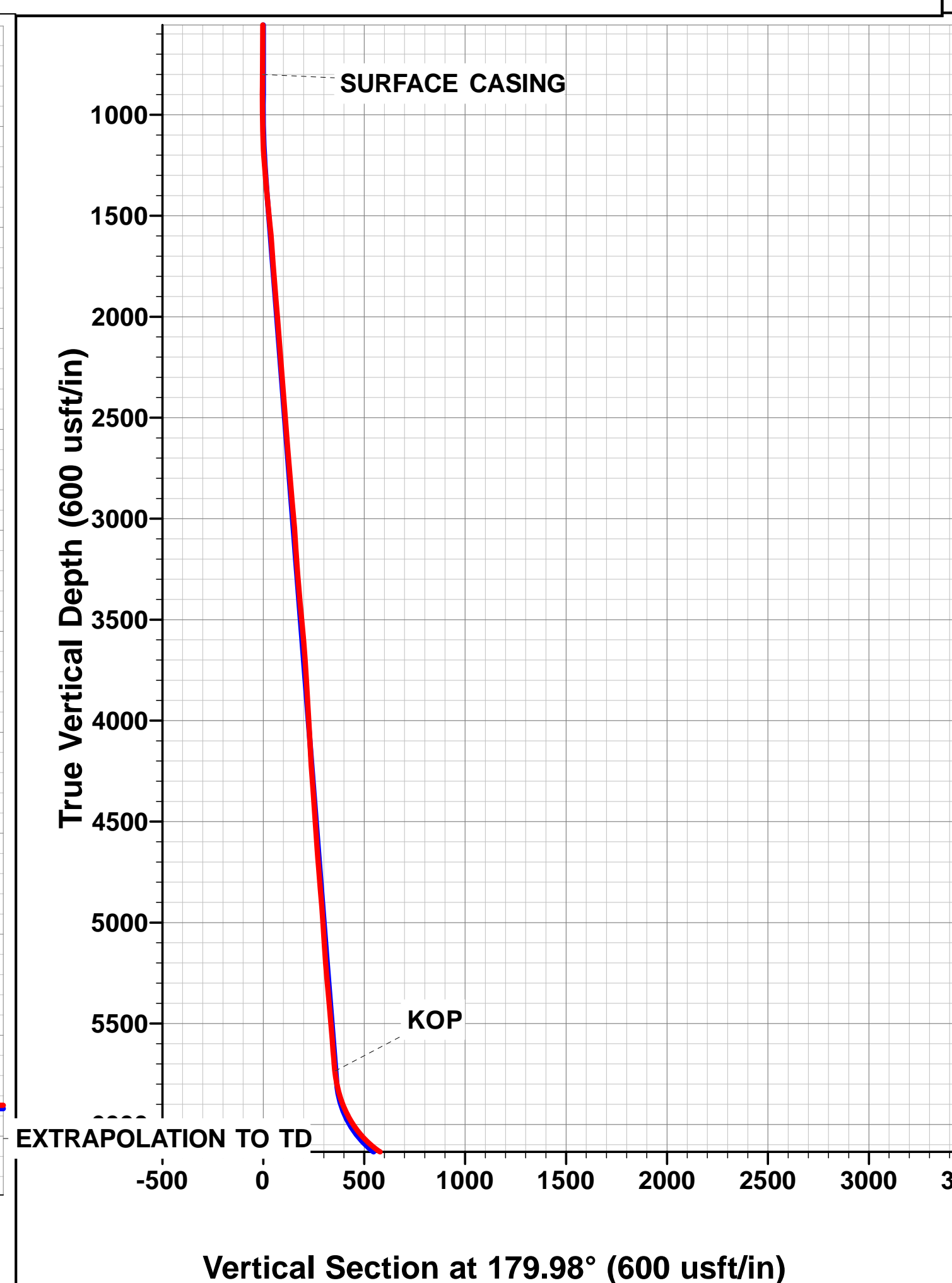
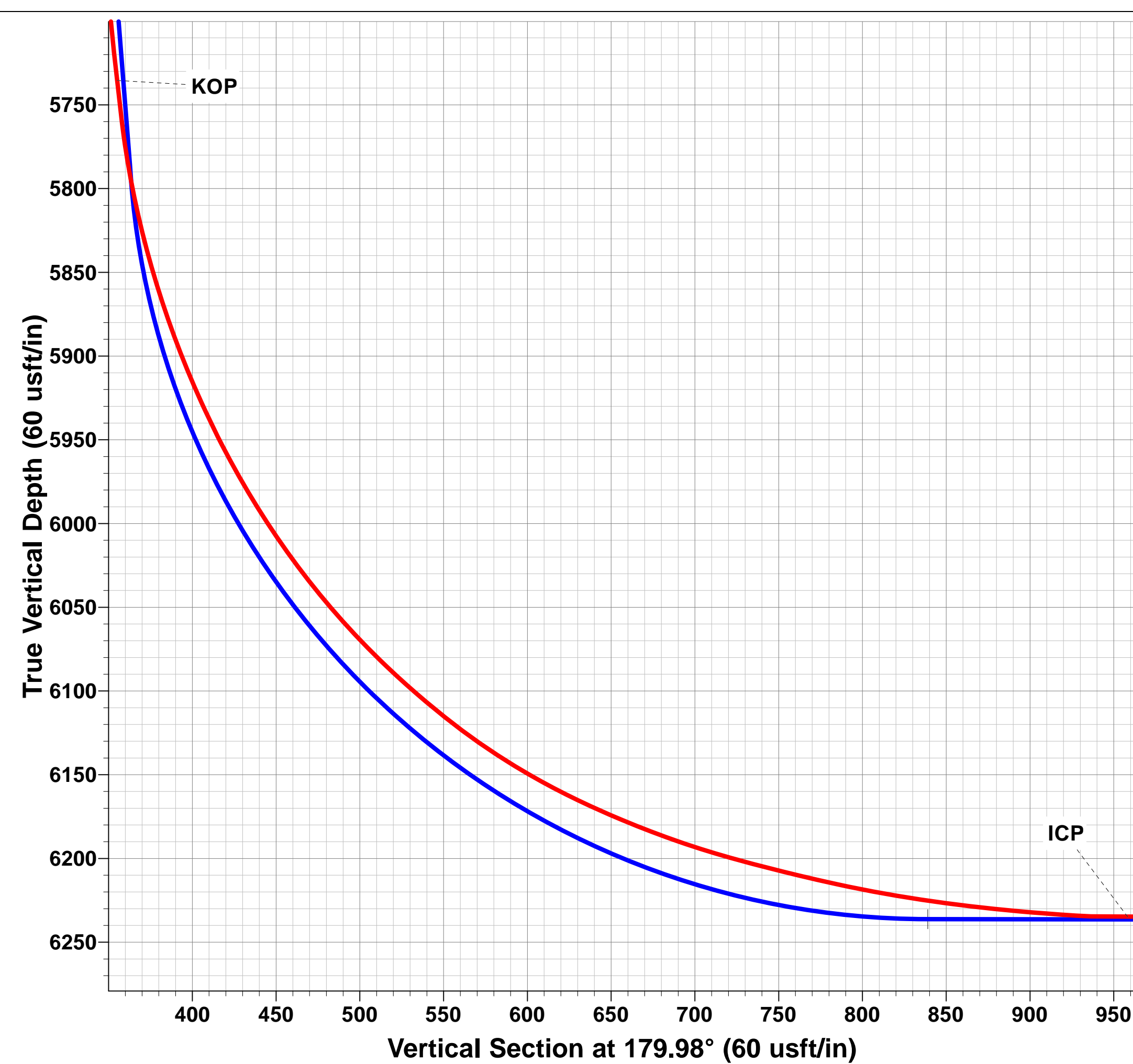
Project: WELD COUNTY, COLORADO
Site: SEC 22 T5N R62W 6th P.M.
Well: ANSCHUTZ STATE #5-62-27-0857BH
Wellbore: JOB #2009-251
Design: FINAL SURVEYS

ANNOTATIONS

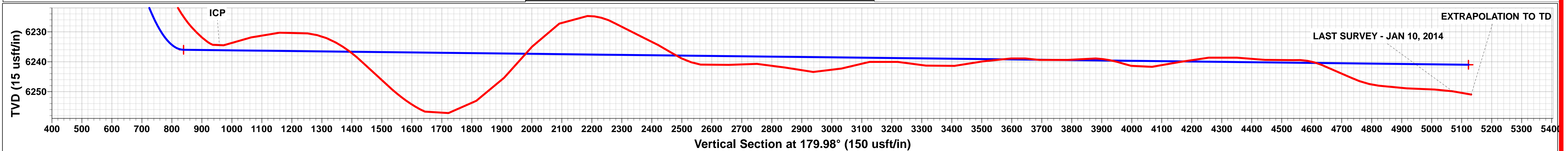
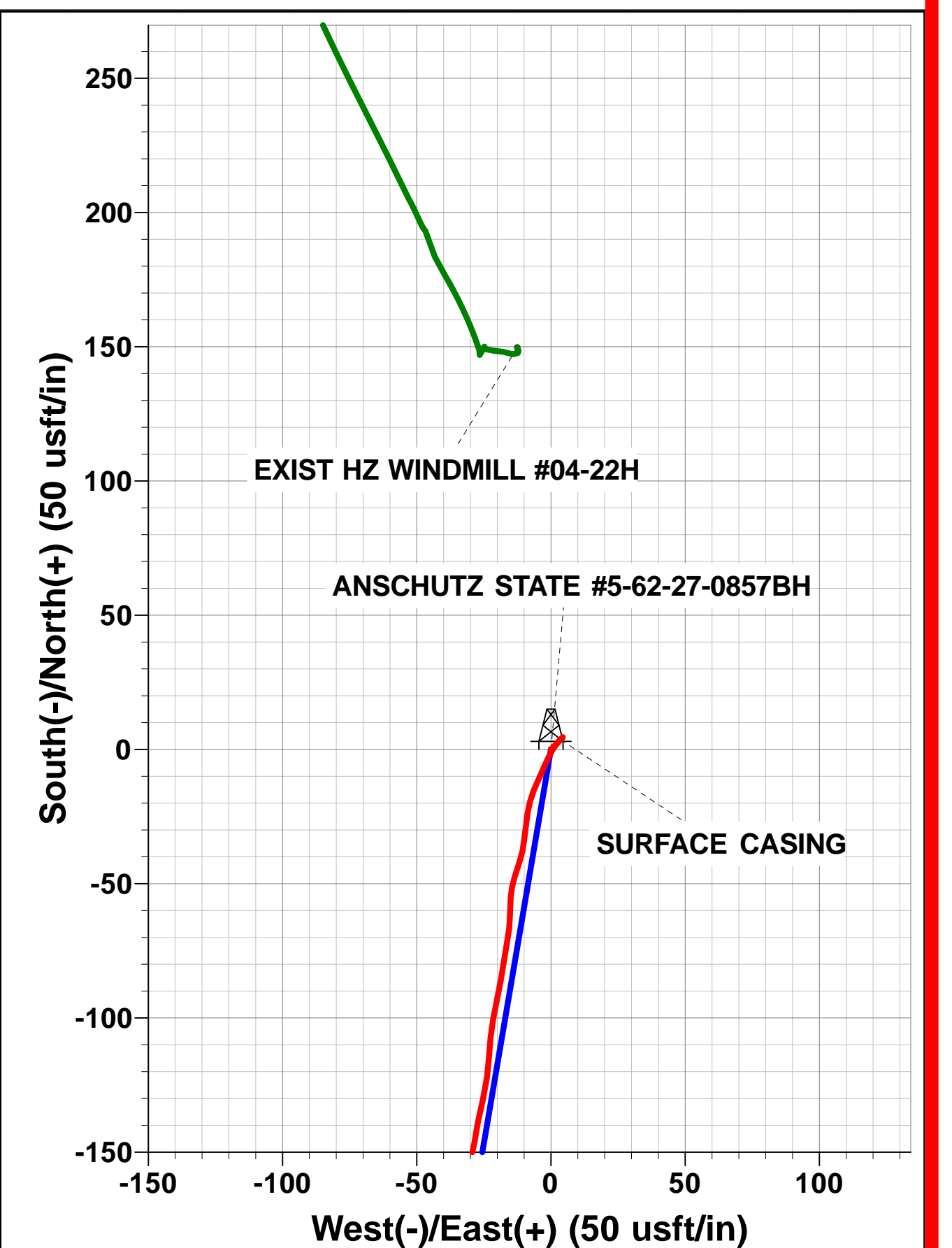
TVD	MD	Inc	Azi	+N/-S	+E/-W	Vsect	Departure	Annotation
800.0	800.0	0.74	43.80	3.7	3.6	-3.7	5.6	SURFACE CASING
5735.2	5750.0	6.64	195.24	-355.1	-66.7	355.1	377.3	KOP
6234.7	6622.0	90.17	179.27	-958.4	-92.5	958.4	981.7	ICP
6249.9	10743.0	89.00	175.20	-5069.9	-45.3	5069.9	5099.5	LAST SURVEY - JAN 10, 2014
6251.0	10805.0	89.00	175.20	-5131.6	-40.1	5131.6	5161.5	EXTRAPOLATION TO TD

WELLBORE TARGET DETAILS (LAT/LONG)

Name	TVD	+N/-S	+E/-W	Latitude	Longitude
LP - ANSCHUTZ STATE #5-62-27-0857BH	6236.0	-839.0	-61.3	40° 22' 36.350 N	104° 18' 7.582 W
BHL - ANSCHUTZ STATE #5-62-27-0857BH	6241.0	-5122.6	1.4	40° 21' 54.022 N	104° 18' 6.772 W



LOCAL COORDINATES:
SHL: 338ft FSL & 444ft FEL Sec 22
LP: 500ft FNL & 500ft FEL Sec 27
BHL: 500ft FSL & 500ft FEL Sec 27
HARD BOUNDARIES:
LP FALLS 40ft S & 40ft W of 460' SETBACK BOUNDARY
LAND +/- 30ft W of PROPOSED LP
LATERAL RUNS PARALLEL WITH 460ft SETBACK BOUNDARY (40' W)
BHL FALLS 40ft N & 40ft W of 460' SETBACK BOUNDARY



Survey Report



Company:	BILL BARRETT CORPORATION	Local Co-ordinate Reference:	Well ANSCHUTZ STATE #5-62-27-0857BH - Slot PRO
Project:	WELD COUNTY, COLORADO	TVD Reference:	KB @ 4683.0usft (SST 17)
Site:	SEC 22 T5N R62W 6th P.M.	MD Reference:	KB @ 4683.0usft (SST 17)
Well:	ANSCHUTZ STATE #5-62-27-0857BH	North Reference:	True
Wellbore:	JOB #2009-251	Survey Calculation Method:	Minimum Curvature
Design:	FINAL SURVEYS	Database:	EDM 5000.1 Single User Db

Project	WELD COUNTY, COLORADO		
Map System:	US State Plane 1983	System Datum:	Mean Sea Level
Geo Datum:	North American Datum 1983		
Map Zone:	Colorado Northern Zone		Using geodetic scale factor

Site	SEC 22 T5N R62W 6th P.M.		
Site Position:		Northing:	1,383,189.52 usft
From:	Lat/Long	Easting:	3,333,780.04 usft
Position Uncertainty:	0.0 usft	Slot Radius:	13-3/16"
		Latitude:	40° 22' 44.641 N
		Longitude:	104° 18' 6.790 W
		Grid Convergence:	0.77 °

Well	ANSCHUTZ STATE #5-62-27-0857BH - Slot PROP HZ AS #5-62-27-0857BH		
Well Position	+N-S	0.0 usft	Northing: 1,383,189.52 usft
	+E-W	0.0 usft	Easting: 3,333,780.04 usft
Position Uncertainty	0.0 usft	Wellhead Elevation:	usft
		Latitude:	40° 22' 44.641 N
		Longitude:	104° 18' 6.790 W
		Ground Level:	4,665.0 usft

Wellbore	JOB #2009-251				
Magnetics	Model Name	Sample Date	Declination (°)	Dip Angle (°)	Field Strength (nT)
	IGRF2010	25/11/2013	8.28	67.02	52,912

Design	FINAL SURVEYS				
Audit Notes:					
Version:	1.0	Phase:	ACTUAL	Tie On Depth:	0.0
Vertical Section:	Depth From (TVD) (usft)	+N-S (usft)	+E-W (usft)	Direction (°)	
	0.0	0.0	0.0	179.98	

Survey Program	Date	11/01/2014			
From (usft)	To (usft)	Survey (Wellbore)	Tool Name	Description	
860.8	10,805.0	FINAL SURVEYS (JOB #2009-251)	MWD	MWD - Standard	

Survey										
Measured Depth (usft)	Inclination (°)	Azimuth (°)	Vertical Depth (usft)	Subsea Depth (usft)	+N-S (usft)	+E-W (usft)	Vertical Section (usft)	Dogleg Rate (°/100usft)	Build Rate (°/100usft)	Turn Rate (°/100usft)
0.0	0.00	0.00	0.0	4,683.0	0.0	0.0	0.0	0.00	0.00	0.00
SURFACE CASING										
800.0	0.74	43.80	800.0	3,883.0	3.7	3.6	-3.7	0.09	0.09	0.00
861.0	0.80	43.80	861.0	3,822.0	4.3	4.2	-4.3	0.09	0.09	0.00
892.0	0.70	42.70	892.0	3,791.0	4.6	4.4	-4.6	0.33	-0.32	-3.55
986.0	1.30	220.70	986.0	3,697.0	4.2	4.1	-4.2	2.13	0.64	189.36
1,080.0	1.50	223.80	1,079.9	3,603.1	2.6	2.6	-2.6	0.23	0.21	3.30
1,173.0	3.40	210.80	1,172.8	3,510.2	-0.7	0.3	0.7	2.12	2.04	-13.98
1,267.0	5.40	203.80	1,266.6	3,416.4	-7.1	-2.9	7.1	2.20	2.13	-7.45
1,361.0	5.50	202.70	1,360.1	3,322.9	-15.3	-6.4	15.3	0.15	0.11	-1.17
1,455.0	5.70	187.80	1,453.7	3,229.3	-24.1	-8.8	24.1	1.56	0.21	-15.85
1,549.0	5.70	186.30	1,547.2	3,135.8	-33.4	-9.9	33.4	0.16	0.00	-1.60
1,642.0	4.30	198.10	1,639.9	3,043.1	-41.3	-11.5	41.3	1.86	-1.51	12.69

Survey Report



Company:	BILL BARRETT CORPORATION	Local Co-ordinate Reference:	Well ANSCHUTZ STATE #5-62-27-0857BH - Slot PRO
Project:	WELD COUNTY, COLORADO	TVD Reference:	KB @ 4683.0usft (SST 17)
Site:	SEC 22 T5N R62W 6th P.M.	MD Reference:	KB @ 4683.0usft (SST 17)
Well:	ANSCHUTZ STATE #5-62-27-0857BH	North Reference:	True
Wellbore:	JOB #2009-251	Survey Calculation Method:	Minimum Curvature
Design:	FINAL SURVEYS	Database:	EDM 5000.1 Single User Db

Survey										
Measured Depth (usft)	Inclination (°)	Azimuth (°)	Vertical Depth (usft)	Subsea Depth (usft)	+N/-S (usft)	+E/-W (usft)	Vertical Section (usft)	Dogleg Rate (°/100usft)	Build Rate (°/100usft)	Turn Rate (°/100usft)
1,736.0	4.10	197.50	1,733.6	2,949.4	-47.8	-13.6	47.8	0.22	-0.21	-0.64
1,830.0	4.90	184.90	1,827.3	2,855.7	-55.1	-15.0	55.0	1.35	0.85	-13.40
1,924.0	4.60	180.40	1,921.0	2,762.0	-62.8	-15.3	62.8	0.51	-0.32	-4.79
2,018.0	5.20	190.60	2,014.7	2,668.3	-70.8	-16.2	70.8	1.12	0.64	10.85
2,112.0	4.80	188.50	2,108.3	2,574.7	-78.9	-17.5	78.8	0.47	-0.43	-2.23
2,206.0	4.10	190.10	2,202.0	2,481.0	-86.1	-18.7	86.0	0.76	-0.74	1.70
2,300.0	4.50	192.30	2,295.8	2,387.2	-93.0	-20.1	93.0	0.46	0.43	2.34
2,394.0	4.50	190.10	2,389.5	2,293.5	-100.2	-21.5	100.2	0.18	0.00	-2.34
2,488.0	4.10	185.80	2,483.2	2,199.8	-107.2	-22.5	107.2	0.55	-0.43	-4.57
2,583.0	4.60	184.00	2,577.9	2,105.1	-114.3	-23.1	114.3	0.55	0.53	-1.89
2,677.0	4.90	186.60	2,671.6	2,011.4	-122.1	-23.8	122.1	0.39	0.32	2.77
2,771.0	5.40	194.30	2,765.2	1,917.8	-130.4	-25.4	130.4	0.91	0.53	8.19
2,865.0	5.10	189.90	2,858.8	1,824.2	-138.8	-27.2	138.8	0.53	-0.32	-4.68
2,959.0	4.80	190.20	2,952.5	1,730.5	-146.8	-28.6	146.8	0.32	-0.32	0.32
3,053.0	4.30	193.60	3,046.2	1,636.8	-154.1	-30.1	154.0	0.60	-0.53	3.62
3,147.0	4.00	197.60	3,139.9	1,543.1	-160.6	-31.9	160.6	0.44	-0.32	4.26
3,240.0	4.10	184.90	3,232.7	1,450.3	-167.0	-33.2	167.0	0.97	0.11	-13.66
3,334.0	5.10	187.00	3,326.4	1,356.6	-174.5	-34.0	174.5	1.08	1.06	2.23
3,428.0	5.10	188.10	3,420.0	1,263.0	-182.8	-35.1	182.8	0.10	0.00	1.17
3,523.0	5.30	185.60	3,514.7	1,168.3	-191.3	-36.1	191.3	0.32	0.21	-2.63
3,616.0	5.30	199.30	3,607.3	1,075.7	-199.7	-38.0	199.7	1.36	0.00	14.73
3,709.0	4.30	196.90	3,699.9	983.1	-207.1	-40.4	207.0	1.10	-1.08	-2.58
3,803.0	3.60	195.10	3,793.7	889.3	-213.3	-42.2	213.3	0.76	-0.74	-1.91
3,897.0	3.30	195.50	3,887.5	795.5	-218.7	-43.7	218.7	0.32	-0.32	0.43
3,991.0	3.40	192.40	3,981.4	701.6	-224.1	-45.0	224.1	0.22	0.11	-3.30
4,086.0	3.30	185.90	4,076.2	606.8	-229.5	-45.9	229.5	0.41	-0.11	-6.84
4,180.0	3.00	181.40	4,170.1	512.9	-234.7	-46.2	234.7	0.41	-0.32	-4.79
4,274.0	4.30	186.60	4,263.9	419.1	-240.6	-46.7	240.6	1.43	1.38	5.53
4,368.0	4.00	184.40	4,357.6	325.4	-247.4	-47.3	247.4	0.36	-0.32	-2.34
4,462.0	4.30	197.20	4,451.4	231.6	-254.0	-48.6	254.0	1.03	0.32	13.62
4,556.0	4.20	195.20	4,545.1	137.9	-260.7	-50.6	260.7	0.19	-0.11	-2.13
4,650.0	3.90	195.20	4,638.9	44.1	-267.1	-52.3	267.1	0.32	-0.32	0.00
4,745.0	5.00	192.70	4,733.6	-50.6	-274.3	-54.1	274.3	1.18	1.16	-2.63
4,840.0	4.90	189.90	4,828.3	-145.3	-282.3	-55.7	282.3	0.28	-0.11	-2.95
4,934.0	4.40	191.00	4,921.9	-238.9	-289.8	-57.1	289.8	0.54	-0.53	1.17
5,028.0	3.70	191.80	5,015.7	-332.7	-296.3	-58.4	296.3	0.75	-0.74	0.85
5,122.0	3.70	184.30	5,109.5	-426.5	-302.3	-59.2	302.3	0.51	0.00	-7.98
5,216.0	4.70	184.30	5,203.3	-520.3	-309.2	-59.7	309.2	1.06	1.06	0.00
5,310.0	5.00	187.10	5,296.9	-613.9	-317.1	-60.5	317.1	0.41	0.32	2.98
5,404.0	5.40	185.50	5,390.5	-707.5	-325.6	-61.5	325.6	0.45	0.43	-1.70
5,498.0	4.70	183.40	5,484.2	-801.2	-333.8	-62.1	333.8	0.77	-0.74	-2.23
5,592.0	4.60	193.60	5,577.9	-894.9	-341.3	-63.2	341.3	0.88	-0.11	10.85
5,650.0	4.40	192.90	5,635.7	-952.7	-345.8	-64.3	345.7	0.36	-0.34	-1.21
KOP										
5,750.0	6.64	195.24	5,735.2	-1,052.2	-355.1	-66.7	355.1	2.25	2.24	2.34
5,775.0	7.20	195.60	5,760.0	-1,077.0	-358.0	-67.5	358.0	2.25	2.24	1.43
5,822.0	12.20	191.40	5,806.3	-1,123.3	-365.7	-69.2	365.7	10.74	10.64	-8.94
5,869.0	16.90	192.30	5,851.8	-1,168.8	-377.2	-71.7	377.2	10.01	10.00	1.91
5,917.0	21.30	188.20	5,897.2	-1,214.2	-392.7	-74.4	392.7	9.58	9.17	-8.54
5,963.0	25.90	182.40	5,939.3	-1,256.3	-411.0	-76.0	411.0	11.19	10.00	-12.61
6,010.0	30.60	185.40	5,980.7	-1,297.7	-433.2	-77.6	433.2	10.44	10.00	6.38
6,058.0	36.30	184.90	6,020.7	-1,337.7	-459.5	-79.9	459.5	11.89	11.87	-1.04
6,105.0	41.80	183.80	6,057.2	-1,374.2	-489.0	-82.2	489.0	11.79	11.70	-2.34

Survey Report



Company:	BILL BARRETT CORPORATION	Local Co-ordinate Reference:	Well ANSCHUTZ STATE #5-62-27-0857BH - Slot PRO
Project:	WELD COUNTY, COLORADO	TVD Reference:	KB @ 4683.0usft (SST 17)
Site:	SEC 22 T5N R62W 6th P.M.	MD Reference:	KB @ 4683.0usft (SST 17)
Well:	ANSCHUTZ STATE #5-62-27-0857BH	North Reference:	True
Wellbore:	JOB #2009-251	Survey Calculation Method:	Minimum Curvature
Design:	FINAL SURVEYS	Database:	EDM 5000.1 Single User Db

Survey

Measured Depth (usft)	Inclination (°)	Azimuth (°)	Vertical Depth (usft)	Subsea Depth (usft)	+N/-S (usft)	+E/-W (usft)	Vertical Section (usft)	Dogleg Rate (°/100usft)	Build Rate (°/100usft)	Turn Rate (°/100usft)
6,152.0	47.40	183.20	6,090.7	-1,407.7	-522.0	-84.2	521.9	11.95	11.91	-1.28
6,199.0	52.50	179.80	6,120.9	-1,437.9	-557.9	-85.1	557.9	12.18	10.85	-7.23
6,247.0	59.70	182.90	6,147.7	-1,464.7	-597.7	-86.0	597.7	15.93	15.00	6.46
6,294.0	65.60	183.80	6,169.3	-1,486.3	-639.4	-88.5	639.3	12.67	12.55	1.91
6,341.0	70.00	181.70	6,187.0	-1,504.0	-682.8	-90.6	682.8	10.23	9.36	-4.47
6,388.0	75.00	184.40	6,201.2	-1,518.2	-727.6	-93.0	727.5	11.97	10.64	5.74
6,435.0	77.00	180.90	6,212.5	-1,529.5	-773.1	-95.1	773.1	8.39	4.26	-7.45
6,482.0	80.20	179.90	6,221.8	-1,538.8	-819.2	-95.4	819.1	7.12	6.81	-2.13
6,529.0	83.60	178.00	6,228.4	-1,545.4	-865.7	-94.5	865.7	8.27	7.23	-4.04
6,582.0	85.80	178.90	6,233.3	-1,550.3	-918.4	-93.1	918.4	4.48	4.15	1.70
ICP										
6,622.0	90.17	179.27	6,234.7	-1,551.7	-958.4	-92.5	958.4	10.97	10.93	0.93
6,636.0	91.70	179.40	6,234.5	-1,551.5	-972.4	-92.3	972.4	10.97	10.93	0.92
6,728.0	91.60	178.50	6,231.9	-1,548.9	-1,064.3	-90.6	1,064.3	0.98	-0.11	-0.98
6,823.0	90.30	175.40	6,230.3	-1,547.3	-1,159.2	-85.6	1,159.1	3.54	-1.37	-3.26
6,917.0	89.40	173.40	6,230.5	-1,547.5	-1,252.7	-76.4	1,252.7	2.33	-0.96	-2.13
7,012.0	86.90	174.00	6,233.6	-1,550.6	-1,347.1	-66.0	1,347.1	2.71	-2.63	0.63
7,105.0	84.50	176.60	6,240.6	-1,557.6	-1,439.5	-58.4	1,439.5	3.80	-2.58	2.80
7,200.0	85.00	179.80	6,249.3	-1,566.3	-1,534.0	-55.4	1,534.0	3.40	0.53	3.37
7,294.0	86.90	184.90	6,255.9	-1,572.9	-1,627.7	-59.3	1,627.7	5.78	2.02	5.43
7,389.0	91.60	188.40	6,257.2	-1,574.2	-1,722.0	-70.3	1,722.0	6.17	4.95	3.68
7,483.0	93.40	189.30	6,253.1	-1,570.1	-1,814.8	-84.7	1,814.8	2.14	1.91	0.96
7,577.0	96.00	185.90	6,245.3	-1,562.3	-1,907.6	-97.1	1,907.6	4.54	2.77	-3.62
7,671.0	96.70	181.60	6,234.9	-1,551.9	-2,000.8	-103.2	2,000.8	4.61	0.74	-4.57
7,762.0	93.00	180.60	6,227.3	-1,544.3	-2,091.5	-104.9	2,091.4	4.21	-4.07	-1.10
7,856.0	90.10	181.60	6,224.7	-1,541.7	-2,185.4	-106.7	2,185.4	3.26	-3.09	1.06
7,950.0	86.80	179.60	6,227.3	-1,544.3	-2,279.3	-107.7	2,279.3	4.10	-3.51	-2.13
8,045.0	87.40	178.00	6,232.1	-1,549.1	-2,374.2	-105.7	2,374.2	1.80	0.63	-1.68
8,139.0	86.40	177.60	6,237.1	-1,554.1	-2,468.0	-102.1	2,468.0	1.15	-1.06	-0.43
8,234.0	89.00	176.90	6,241.0	-1,558.0	-2,562.8	-97.6	2,562.8	2.83	2.74	-0.74
8,328.0	90.90	177.00	6,241.0	-1,558.0	-2,656.7	-92.6	2,656.6	2.02	2.02	0.11
8,422.0	89.50	176.90	6,240.7	-1,557.7	-2,750.5	-87.6	2,750.5	1.49	-1.49	-0.11
8,516.0	89.00	175.70	6,241.9	-1,558.9	-2,844.3	-81.5	2,844.3	1.38	-0.53	-1.28
8,610.0	89.20	176.90	6,243.4	-1,560.4	-2,938.1	-75.5	2,938.1	1.29	0.21	1.28
8,704.0	92.20	178.30	6,242.3	-1,559.3	-3,032.0	-71.5	3,032.0	3.52	3.19	1.49
8,798.0	90.50	178.00	6,240.1	-1,557.1	-3,125.9	-68.5	3,125.9	1.84	-1.81	-0.32
8,892.0	89.50	179.40	6,240.1	-1,557.1	-3,219.9	-66.4	3,219.9	1.83	-1.06	1.49
8,986.0	89.00	178.90	6,241.3	-1,558.3	-3,313.9	-65.0	3,313.9	0.75	-0.53	-0.53
9,081.0	90.90	179.70	6,241.4	-1,558.4	-3,408.9	-63.8	3,408.9	2.17	2.00	0.84
9,175.0	90.90	178.40	6,239.9	-1,556.9	-3,502.8	-62.2	3,502.8	1.38	0.00	-1.38
9,270.0	90.30	180.40	6,238.9	-1,555.9	-3,597.8	-61.2	3,597.8	2.20	-0.63	2.11
9,364.0	89.10	180.00	6,239.4	-1,556.4	-3,691.8	-61.6	3,691.8	1.35	-1.28	-0.43
9,458.0	90.90	180.30	6,239.4	-1,556.4	-3,785.8	-61.8	3,785.8	1.94	1.91	0.32
9,552.0	89.70	179.60	6,238.9	-1,555.9	-3,879.8	-61.7	3,879.8	1.48	-1.28	-0.74
9,647.0	88.10	177.00	6,240.7	-1,557.7	-3,974.7	-58.9	3,974.7	3.21	-1.68	-2.74
9,740.0	90.70	178.60	6,241.7	-1,558.7	-4,067.7	-55.3	4,067.6	3.28	2.80	1.72
9,835.0	91.30	177.00	6,240.0	-1,557.0	-4,162.6	-51.7	4,162.6	1.80	0.63	-1.68
9,929.0	90.40	180.00	6,238.6	-1,555.6	-4,256.5	-49.2	4,256.5	3.33	-0.96	3.19
10,023.0	89.60	182.30	6,238.6	-1,555.6	-4,350.5	-51.1	4,350.5	2.59	-0.85	2.45
10,117.0	89.50	180.40	6,239.4	-1,556.4	-4,444.5	-53.3	4,444.4	2.02	-0.11	-2.02
10,211.0	90.40	180.60	6,239.5	-1,556.5	-4,538.5	-54.2	4,538.4	0.98	0.96	0.21
10,305.0	87.70	182.10	6,241.0	-1,558.0	-4,632.4	-56.4	4,632.4	3.29	-2.87	1.60
10,400.0	87.30	180.40	6,245.2	-1,562.2	-4,727.3	-58.4	4,727.3	1.84	-0.42	-1.79

Survey Report



Company:	BILL BARRETT CORPORATION	Local Co-ordinate Reference:	Well ANSCHUTZ STATE #5-62-27-0857BH - Slot PRO
Project:	WELD COUNTY, COLORADO	TVD Reference:	KB @ 4683.0usft (SST 17)
Site:	SEC 22 T5N R62W 6th P.M.	MD Reference:	KB @ 4683.0usft (SST 17)
Well:	ANSCHUTZ STATE #5-62-27-0857BH	North Reference:	True
Wellbore:	JOB #2009-251	Survey Calculation Method:	Minimum Curvature
Design:	FINAL SURVEYS	Database:	EDM 5000.1 Single User Db

Survey										
Measured Depth (usft)	Inclination (°)	Azimuth (°)	Vertical Depth (usft)	Subsea Depth (usft)	+N/-S (usft)	+E/-W (usft)	Vertical Section (usft)	Dogleg Rate (°/100usft)	Build Rate (°/100usft)	Turn Rate (°/100usft)
10,495.0	89.30	178.80	6,248.0	-1,565.0	-4,822.2	-57.8	4,822.2	2.70	2.11	-1.68
10,589.0	89.60	177.70	6,248.9	-1,565.9	-4,916.2	-54.9	4,916.2	1.21	0.32	-1.17
10,683.0	89.90	176.10	6,249.3	-1,566.3	-5,010.0	-49.8	5,010.0	1.73	0.32	-1.70
LAST SURVEY - JAN 10, 2014										
10,743.0	89.00	175.20	6,249.9	-1,566.9	-5,069.9	-45.3	5,069.9	2.12	-1.50	-1.50
EXTRAPOLATION TO TD										
10,805.0	89.00	175.20	6,251.0	-1,568.0	-5,131.6	-40.1	5,131.6	0.00	0.00	0.00

Targets										
Target Name	- hit/miss target	Dip Angle (°)	Dip Dir. (°)	TVD (usft)	+N/-S (usft)	+E/-W (usft)	Northing (usft)	Easting (usft)	Latitude	Longitude
BHL - ANSCHUTZ ST		0.00	0.00	6,241.0	-5,122.6	1.4	1,378,067.66	3,333,850.64	40° 21' 54.022 N	104° 18' 6.772 W
- survey misses target center by 43.2usft at 10799.2usft MD (6250.9 TVD, -5125.9 N, -40.6 E)										
- Point										
LP - ANSCHUTZ STA		0.00	0.00	6,236.0	-839.0	-61.3	1,382,349.80	3,333,730.08	40° 22' 36.350 N	104° 18' 7.582 W
- survey misses target center by 35.6usft at 6504.3usft MD (6225.3 TVD, -841.2 N, -95.2 E)										
- Point										

Survey Annotations					
Measured Depth (usft)	Vertical Depth (usft)	Local Coordinates			
		+N/-S (usft)	+E/-W (usft)	Comment	
800.0	800.0	3.7	3.6	SURFACE CASING	
5,750.0	5,735.2	-355.1	-66.7	KOP	
6,622.0	6,234.7	-958.4	-92.5	ICP	
10,743.0	6,249.9	-5,069.9	-45.3	LAST SURVEY - JAN 10, 2014	
10,805.0	6,251.0	-5,131.6	-40.1	EXTRAPOLATION TO TD	

Checked By: _____ Approved By: _____ Date: _____