

T10N, R58W, 6th P.M.

WHITING OIL & GAS CORP.

2010 UELS
Alum. Cap,
0.3' High
Lat: 40.802117°
Long: 103.879772°

Target Bottom Hole

2010 UELS Alum. Cap,
0.5' Below Ground
Lat: 40.802136°
Long: 103.860622°

Well location, RAZOR #330-2812 (SURFACE LOCATION), located as shown in the SW 1/4 SE 1/4 of Section 33, T10N, R58W, 6th P.M., Weld County, Colorado.

BASIS OF ELEVATION

SPOT ELEVATION LOCATED AT THE NORTHEAST CORNER OF SECTION 15, T9N, R58W, 6th P.M. TAKEN FROM THE GATEHOOK SPRING, QUADRANGLE, COLORADO, WELD COUNTY, 7.5 MINUTE QUAD (TOPOGRAPHIC MAP) PUBLISHED BY THE UNITED STATES DEPARTMENT OF THE INTERIOR, GEOLOGICAL SURVEY. SAID ELEVATION IS MARKED AS BEING 4679 FEET.

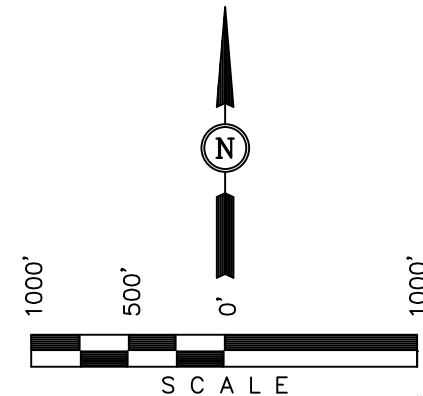
BASIS OF BEARINGS

BASIS OF BEARINGS IS A G.P.S. OBSERVATION.

NOTE:
THE PROPOSED TARGET BOTTOM HOLE FOR THIS WELL IS LOCATED IN THE NW 1/4 SE 1/4 OF SECTION 28, T10N, R58W, 6th P.M. AT 2552' FSL 1485' FEL. IT BEARS N02°13'46"E 7501.27' FROM THE PROPOSED WELL HEAD.

2012 UELS Alum. Cap,
0.1' High, PLS 28285
Lat: 40.794873°
Long: 103.879513°

2012 UELS Alum. Cap,
PLS 28285, 0.3' High
Lat: 40.794906°
Long: 103.860528°



CERTIFICATION

THIS IS TO CERTIFY THAT THE ABOVE PLAT WAS PREPARED FROM FIELD NOTES OF ACTUAL SURVEYS MADE BY ME OR UNDER MY SUPERVISION AND THAT THE SAME ARE TRUE AND CORRECT TO THE BEST OF MY KNOWLEDGE AND BELIEF.

REGISTERED LAND SURVEYOR
REGISTRATION NO. 28285
STATE OF COLORADO 09-19-13

REVISED: 09-19-13 B.D.H.

REVISED: 08-29-13 B.D.H.

UINTAH ENGINEERING & LAND SURVEYING
85 SOUTH 200 EAST - VERNAL, UTAH 84078
(435) 789-1017

T10N
T9N S89°49'48"W - 2603.18' (Meas.) S89°49'53"W - 2609.50' (Meas.)

2010 UELS Alum. Cap,
0.3' Below Ground
Lat: 40.787628°
Long: 103.879253°

2012 UELS Alum. Cap,
PLS 28285
1.0' Below Ground
Lat: 40.787653°
Long: 103.869856°

2010 UELS Alum. Cap,
Lat: 40.787675°
Long: 103.860433°

PDOP = 2.2

LEGEND:

└ = 90° SYMBOL

● = PROPOSED WELL HEAD.

▲ = SECTION CORNERS LOCATED.

NAD 83 (SURFACE LOCATION)
LATITUDE = 40°47'18.83" (40.788564)
LONGITUDE = 103°52'01.80" (103.867167)
NAD 27 (SURFACE LOCATION)
LATITUDE = 40°47'18.88" (40.788578)
LONGITUDE = 103°51'59.99" (103.866664)

SCALE 1" = 1000'	DATE SURVEYED: 08-07-13	DATE DRAWN: 08-10-13
PARTY D.N. G.W. A.D.	REFERENCES G.L.O. PLAT	
WEATHER HOT	FILE WHITING OIL & GAS CORP.	

T10N, R58W, 6th P.M.

2010 UELS Alum. Cap,
Flush W/Ground
RLS 17492
Lat: 40.816664°
Long: 103.880000°

2012 UELS Alum.
Cap, 0.5' High
Lat: 40.816736°
Long: 103.870442°

2010 UELS Alum. Cap,
0.5' Below Ground
Lat: 40.816692°
Long: 103.860906°

WHITING OIL & GAS CORP.

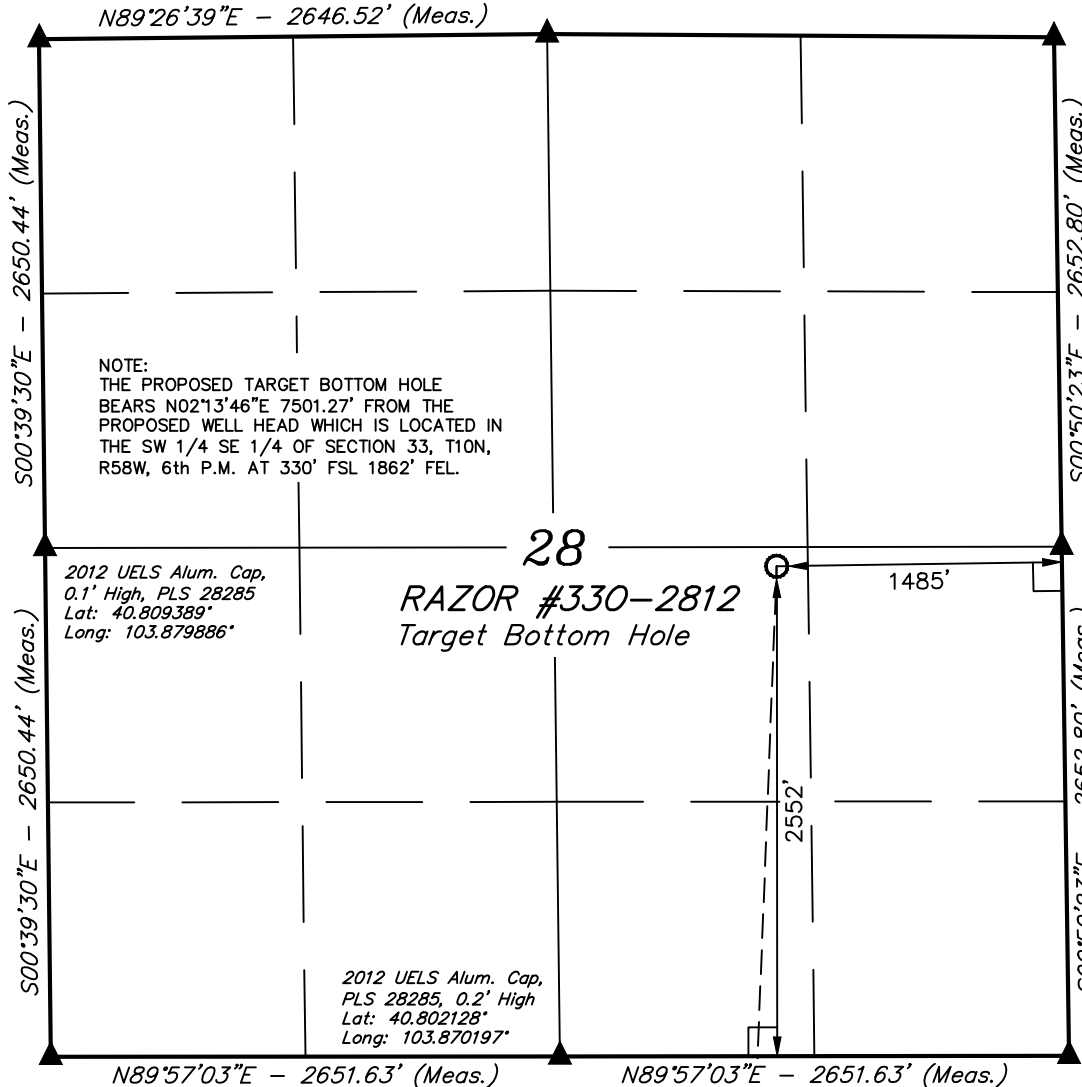
Well location, RAZOR #330-2812 (TARGET BOTTOM HOLE), located as shown in the NW 1/4 SE 1/4 of Section 28, T10N, R58W, 6th P.M., Weld County, Colorado.

BASIS OF ELEVATION

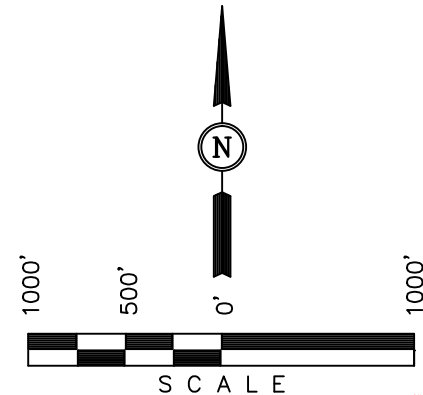
SPOT ELEVATION LOCATED AT THE NORTHEAST CORNER OF SECTION 15, T9N, R58W, 6th P.M. TAKEN FROM THE GATEHOOK SPRING, QUADRANGLE, COLORADO, WELD COUNTY, 7.5 MINUTE QUAD (TOPOGRAPHIC MAP) PUBLISHED BY THE UNITED STATES DEPARTMENT OF THE INTERIOR, GEOLOGICAL SURVEY. SAID ELEVATION IS MARKED AS BEING 4679 FEET.

BASIS OF BEARINGS

BASIS OF BEARINGS IS A G.P.S. OBSERVATION.



2012 UELS Alum. Cap,
PLS 28285,
0.6' Below Ground
Lat: 40.809414°
Long: 103.860764°



CERTIFICATION

THIS IS TO CERTIFY THAT THE ABOVE PLAT WAS PREPARED FROM FIELD NOTES OF ACTUAL SURVEYS MADE BY ME OR UNDER MY SUPERVISION AND THAT THE SAME ARE TRUE AND CORRECT TO THE BEST OF MY KNOWLEDGE AND BELIEF.

[Signature]
REGISTERED LAND SURVEYOR
REGISTRATION NO. 28285
STATE OF COLORADO
09-19-13

REVISED: 09-19-13 B.D.H.
REVISED: 08-29-13 B.D.H.

UINTAH ENGINEERING & LAND SURVEYING
85 SOUTH 200 EAST - VERNAL, UTAH 84078
(435) 789-1017

2010 UELS Alum. Cap,
0.3' High
Lat: 40.802117°
Long: 103.879772°

LEGEND:

- └─┘ = 90° SYMBOL
- = PROPOSED WELL HEAD.
- ▲ = SECTION CORNERS LOCATED.

Surface Location

N02°13'46"E
7501.27'

NAD 83 (TARGET BOTTOM HOLE)	
LATITUDE =	40°48'32.88" (40.809133)
LONGITUDE =	103°51'58.04" (103.866122)
NAD 27 (TARGET BOTTOM HOLE)	
LATITUDE =	40°48'32.93" (40.809147)
LONGITUDE =	103°51'56.23" (103.865619)

2010 UELS Alum. Cap,
0.5' Below Ground
Lat: 40.802136°
Long: 103.860622°

SCALE 1" = 1000'	DATE SURVEYED: 08-07-13	DATE DRAWN: 08-10-13
PARTY D.N. G.W. A.D.	REFERENCES G.L.O. PLAT	
WEATHER HOT	FILE WHITING OIL & GAS CORP.	