

WELL LOCATION MAP

SMU 1-12-B PAD

35|36
02|01
Alum. Cap
PLS 34587

N 89°44'59" E 2601.24'

36
01
See Note 3

N 89°43'54" E 2600.01'

36|31
01|06
See Note 3

NOTE-DISTANCE TO NEAREST:
Property Line - N90°E 480'±
Public Road - CR 562 - N75°W 679'±
Building - N86°W 2.3± Miles
Railroad - S10°E 7.8± Miles
Powerline - N26°W 4337'±
Water Well - N45°E 9804'±
Drainage - N90°E 494'±

N 00°18'10" E 2832.68'

S 01°05'16" E 2849.53'

1/4 Corner
Sec 2|Sec 1
Alum. Cap
PLS 16163

SMU 1-12-B

Surface Location
391 FSL 2160 FWL
Ground Elev 8647.3
Pad Elev 8636.6
LAT:37.63688
LON:-105.17129

N 00°11'39" E 2639.73'

01|06
See Note 3

S 01°05'16" E 2849.53'

1/4 Corner
Sec 1|Sec 12
Alum. Cap
PLS 16163

S 89°45'27" E 2642.20'
(Basis of Bearings)

S 85°56'31" E 2697.91'

01|06
12|07
See Note 3

188'

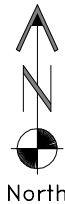
SURVEYOR'S STATEMENT

The undersigned hereby states that the well location shown hereon was staked on the ground based on existing monumentation and/or physical evidence found in the field and is correct to the best of my knowledge, information and belief.

NOTES

- 1.) Horizontal and vertical datum, based on an OPUS solution.
 - 2.) All directions, distances, and dimensions shown hereon are based on coordinates from the "Colorado coordinate system of 1983 south zone" (article 52 of title 38, C.R.S.).
 - 3.) All section line dimensions shown hereon are based on field measurements of existing monuments and/or physical evidence found in the field unless otherwise indicated. Refer to land survey plats deposited in Huerfano County, COGCC Well Plats, & BLM Survey.
 - 4.) Physical features shown hereon are for graphical representation only.
 - 5.) See Form 2A for visible improvements within 500' of wellhead.
 - 6.) Distances to nearest section lines are measured perpendicularly.
 - 7.) This is not a land survey nor land survey plat.
 - 8.) Date of Survey 12/5/12 Date of Drawing 3/13/14. REV 1
- PDOP Reading: 2.3 Instrument Operator: Sam Selin

3/13/14



0 1000 2000
Graphic Scale in Feet
1" = 1000'

GEO SURV

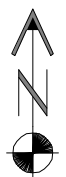
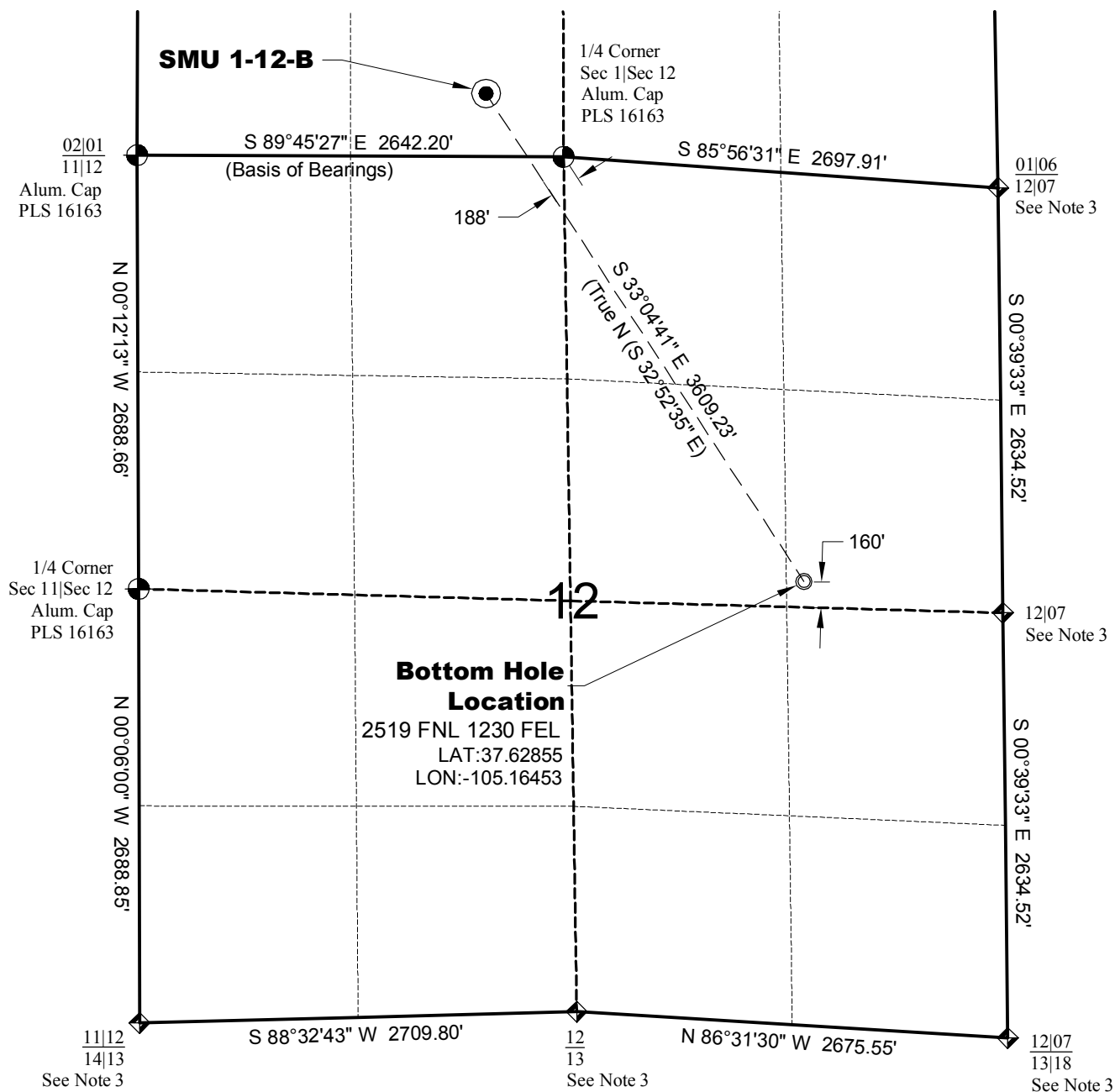
LAND SURVEYING AND MAPPING
LAFAYETTE - WINTER PARK
Ph 303 666 0379 Fx 303 665 6320

OXY PERMIAN
SMU 1-12-B

SL SE1/4 SW1/4 SEC.1 T28S R70W
BHL SE1/4 NE1/4 SEC.12 T28S R70W
6th PM HUERFANO COUNTY COLORADO

BOTTOM HOLE LOCATION MAP

SMU 1-12-B PAD



North

0 1000 2000

Graphic Scale in Feet
1" = 1000'



LAND SURVEYING AND MAPPING
LAFAYETTE - WINTER PARK
Ph 303 666 0379 Fx 303 665 6320

OXY PERMIAN
SMU 1-12-B

SL SE1/4 SW1/4 SEC.1 T28S R70W
BHL SE1/4 NE1/4 SEC.12 T28S R70W
6th PM HUERFANO COUNTY COLORADO