

**ANADARKO PETROLEUM CORP - EBUS
DO NOT MAIL - PO BOX 4995
THE WOODLANDS, Texas**

Badding 1C-26HZ

Ensign 138

Post Job Summary **Plug Service - Whipstock**

Date Prepared: 3/20/2014
Version: 1

Service Supervisor: VIGIL, NICHOLAS

Submitted by: PRUDHOMME, JOSHUA

HALLIBURTON

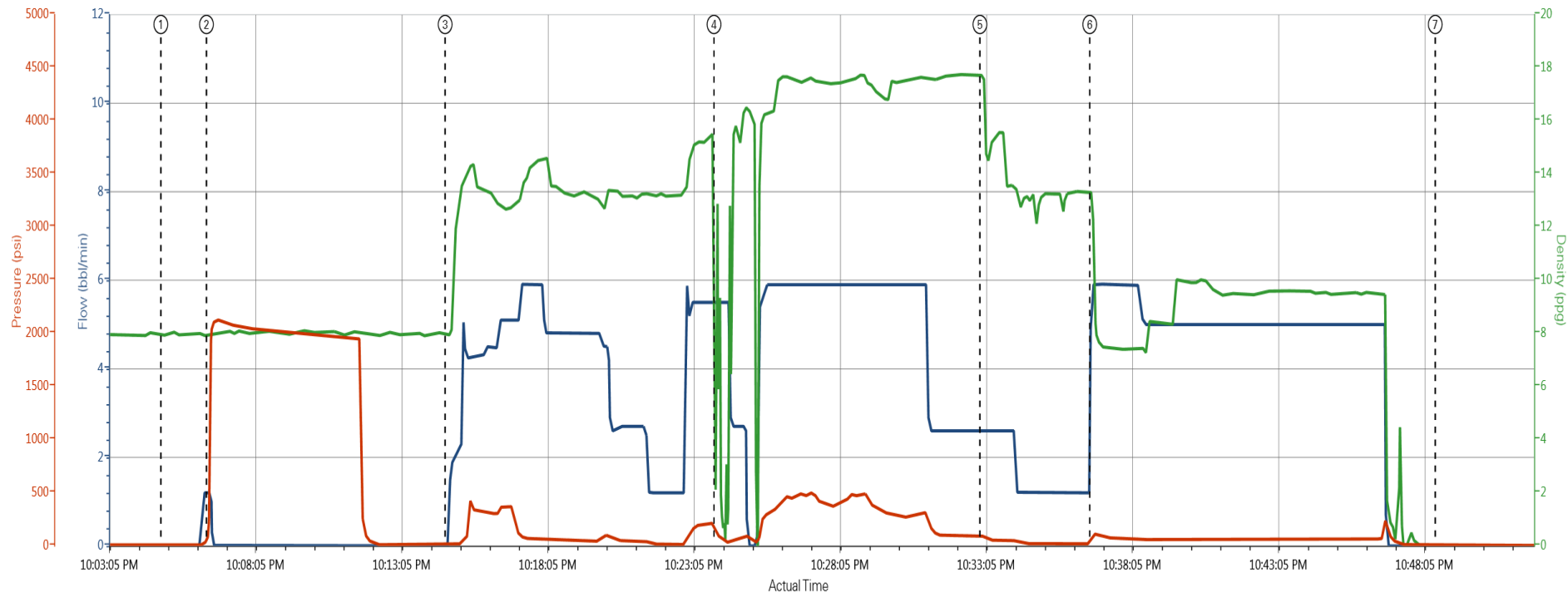
Pumping Schedule

Stage /Plug #	Fluid #	Fluid Type	Fluid Name	Surface Density lbm/gal	Avg Rate bbl/min	Surface Volume	Downhole Volume
1	1	Spacer	TUNED SPACER III	13.5	4.5	34.0 bbl	34.0 bbl
1	2	Cement Slurry	KOP	17.5	6.0	245.0 sacks	245.0 sacks
1	1	Spacer	TUNED SPACER III	13.5	2.0	6.0 bbl	6.0 bbl

HALLIBURTON

Data Acquisition

Anadarko Badding 1C-26HZ



Comb Pump Rate (bbl/min) DH Density (ppg) PS Pump Press (psi)

① Start Job ② Test Lines ③ 13.5 ppg Tuned Spacer ④ 175 ppg Cement ⑤ 13.5 ppg Tuned Spacer ⑥ Pump Displacement ⑦ End Job

▼ HALLIBURTON | iCem® Service

Created: 2014-03-03 18:24:50, Version: 3.0.121

Edit

Customer: ANADARKO PETROLEUM CORP -
EBUS

Job Date: 3/3/2014 6:27:22 PM

Well: Badding 1C-26HZ

Representative: Nicholas Vigil

Sales Order #: 901162009

Job Type: KOP

HALLIBURTON

Service Supervisor Reports

Job Log

Date/Time	Chart #	Activity Code	Pump Rate	Cum Vol	Pump		Pressure (psig)		Comments
03/03/2014 13:45		Arrive At Loc							On location time was 13:30, We got held up at the gate to location because the gate personnel needed to show each employee how to use the panel. Rig still had quite a bit of drill pipe left to run
03/03/2014 14:00		Assessment Of Location Safety Meeting							Hazard hunt, Rig up safety meeting, Water test
03/03/2014 14:10		Rig-Up Equipment							
03/03/2014 15:15		Rig-Up Completed							
03/03/2014 21:40		Pre-Job Safety Meeting							Held safety meeting with all personnel involved in job
03/03/2014 22:04		Start Job							
03/03/2014 22:06		Test Lines							Pressure tested lines to 2000 psi
03/03/2014 22:14		Pump Spacer 1	4.5	34				75.0	13.5 ppg Tuned Spacer
03/03/2014 22:23		Pump Cement	6	41				300.0	17.5 ppg Tuned Spacer (245 sks), weight was verified by scale
03/03/2014 22:32		Pump Spacer 2	2	6				22.0	13.5 ppg Tuned Spacer
03/03/2014 22:36		Pump Displacement	5	56				60.0	Displaced with mud
03/03/2014 22:47		End Job							Rig down safety meeting
03/03/2014 23:00		Rig-Down Equipment							Rig down and wash up pump
03/04/2014 00:30		Rig-Down Completed							

The Road to Excellence Starts with Safety

Sold To #: 300466		Ship To #: 3198513		Quote #:		Sales Order #: 901162009	
Customer: ANADARKO PETROLEUM CORP - EBUS				Customer Rep: BRYAN, ALBERT			
Well Name: Badding			Well #: 1C-26HZ		API/UWI #: 05-123-38334		
Field: WATTENBERG		City (SAP): FORT LUPTON		County/Parish: Weld		State: Colorado	
Contractor: Ensign			Rig/Platform Name/Num: Ensign 138				
Job Purpose: Plug Service - Whipstock							
Well Type: Development Well				Job Type: Plug Service - Whipstock			
Sales Person: FLING, MATTHEW			Srvc Supervisor: VIGIL, NICHOLAS			MBU ID Emp #: 443481	

Job Personnel

HES Emp Name	Exp Hrs	Emp #	HES Emp Name	Exp Hrs	Emp #	HES Emp Name	Exp Hrs	Emp #
ACEVEDO, ROBERTO Carlos	0.0	551312	GARCIA, GREG	0.0	456067	MASTEL, RYAN Eugene	0.0	561732
VIGIL, NICHOLAS Joseph	0.0	443481						

Equipment

HES Unit #	Distance-1 way	HES Unit #	Distance-1 way	HES Unit #	Distance-1 way	HES Unit #	Distance-1 way
10977079C	18 mile	11398490	18 mile	11764739	18 mile		

Job

Job Times

Formation Name	Top	Bottom	Called Out	Date	Time	Time Zone
Formation Depth (MD)			On Location	03 - Mar - 2014	09:30	MST
Form Type	BHST		Job Started	03 - Mar - 2014	13:45	MST
Job depth MD	7042. ft	Job Depth TVD	Job Completed	03 - Mar - 2014	22:04	MST
Water Depth		Wk Ht Above Floor	Deparied Loc	04 - Mar - 2014	22:48	MST
Perforation Depth (MD)	From	To		04 - Mar - 2014	00:30	MST

Fluid Data

Stage/Plug #: 1

Fluid #	Stage Type	Fluid Name	Qty	Qty uom	Mixing Density lbm/gal	Yield ft3/sk	Mix Fluid Gal/sk	Rate bbl/min	Total Mix Fluid Gal/sk
1	TUNED SPACER III	TUNED SPACER III - SBM (483826)	34.0	bbl	13.5	9.7	72.54	4.5	
2	KOP	PLUGCEM (TM) SYSTEM (452969)	245.0	sacks	17.5	.94	3.32	6.0	3.32
1	TUNED SPACER III	TUNED SPACER III - SBM (483826)	6.0	bbl	13.5	9.7	72.54	2.0	

Rates

Circulating	Mixing	Displacement	Avg. Job
Cement Left In Pipe	Amount	0 ft	Reason
Shoe Joint			
Frac Ring # 1 @	ID	Frac ring # 2 @	ID
Frac Ring # 3 @	ID	Frac Ring # 4 @	ID

The Information Stated Herein Is Correct

Customer Representative Signature

