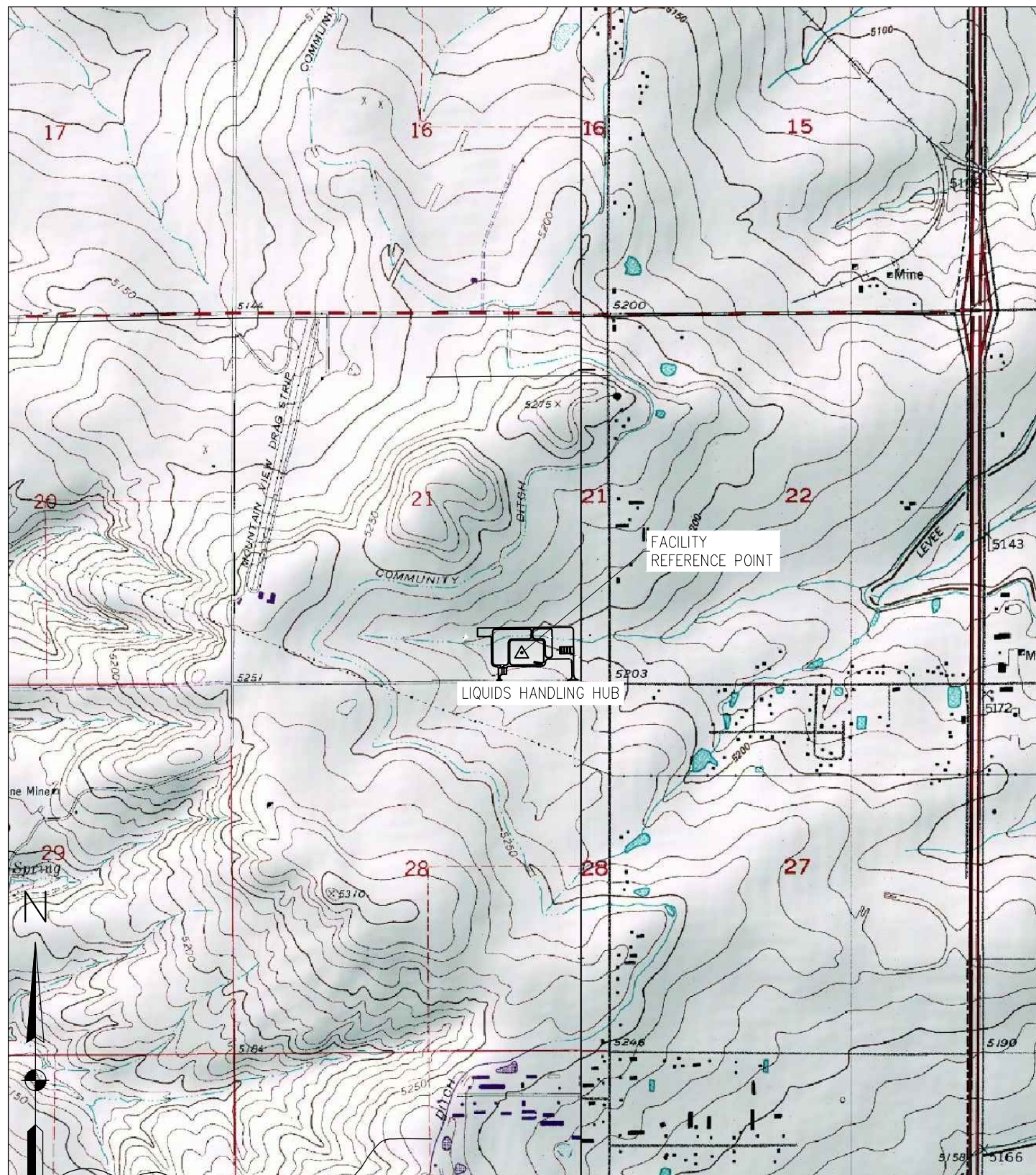


Appendix 2: Figures

Figure 1: Topographic Map

N: \PLANNING LLC\226 Encana Weld CO USR\Form 28\Drawings\Figure 1 Topographic & Hydro Map 2014.3.21.dwg, 3/21/2014 1:17:56 PM, Cory Miller



700 12TH STREET, SUITE 220 • GOLDEN, COLORADO 80401
P: 303.940.8966 • F: 303.940.8959 • www.baselinecorp.com

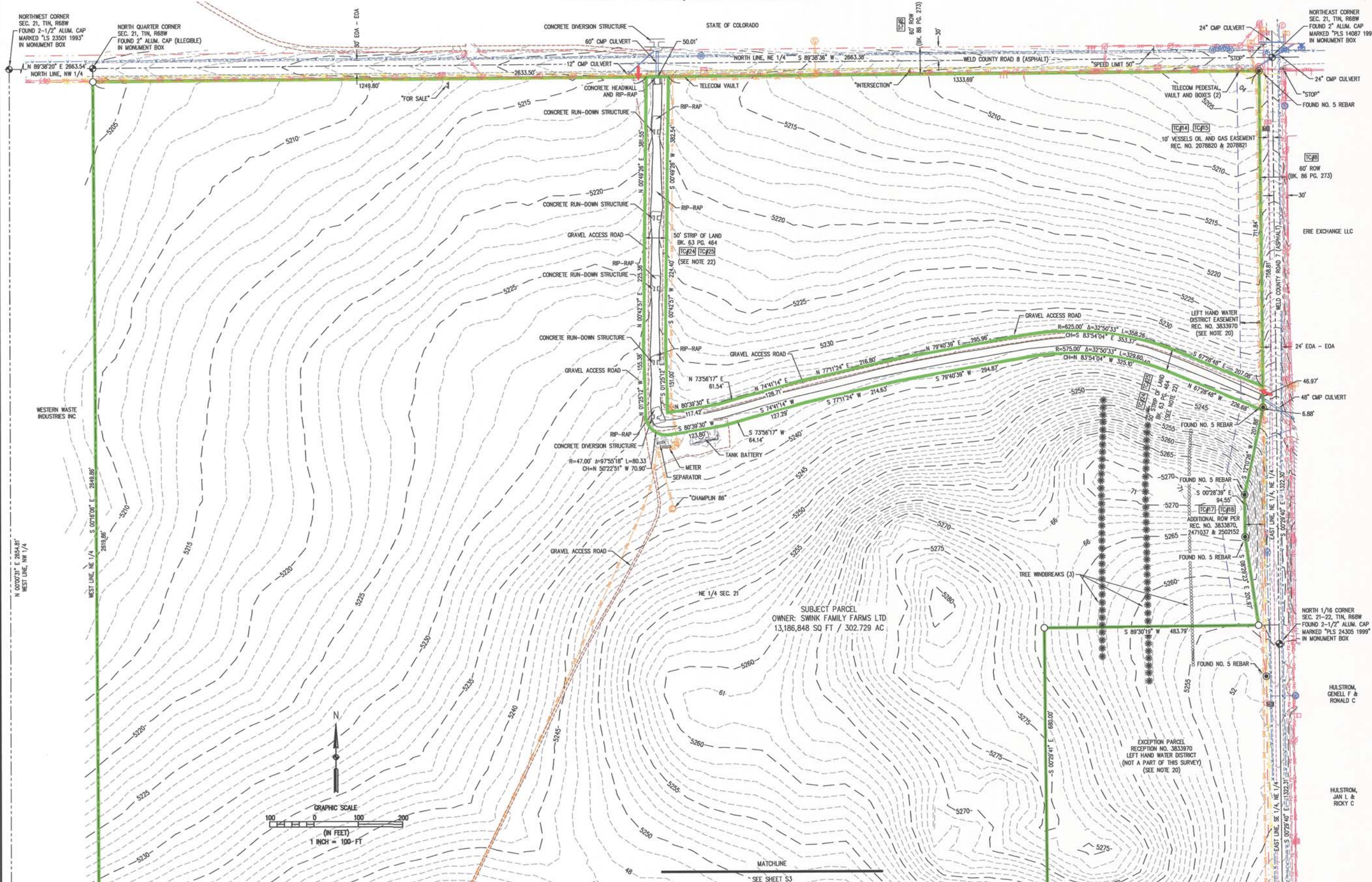
ENCANA OIL & GAS (USA), INC.

TOWN OF ERIE WELD COUNTY
LIQUIDS HANDLING HUB: FIGURE 1 TOPOGRAPHIC MAP
SECTION 21, TOWNSHIP 1N, RANGE 68W

DESIGNED BY	CRM	INITIAL SUBMITTAL	DRAWING SIZE	8.5" X 11"
SURVEY FIRM	BASLINE ENG	SURVEY DATE		
DRAWN BY	CRM	JOB NO.	PL226	
CHECKED BY		DRAWING NAME	Figure 1 Topographic Map	
		SHEET	1 OF 1	

Figure 2: Site Survey

A PARCEL OF LAND LOCATED IN THE EAST HALF OF SECTION 21,
TOWNSHIP 1 NORTH, RANGE 68 WEST OF THE 6TH P.M.
COUNTY OF WELD, STATE OF COLORADO



BASELINE
Engineering • Planning • Surveying

Engineering · Planning · Surveying

710 11TH AVENUE, SUITE 105 • GREELEY, COLORADO 80631
P: 970.353.7600 • F: 970.353.7501 • www.bselinecorp.com

[illegible]

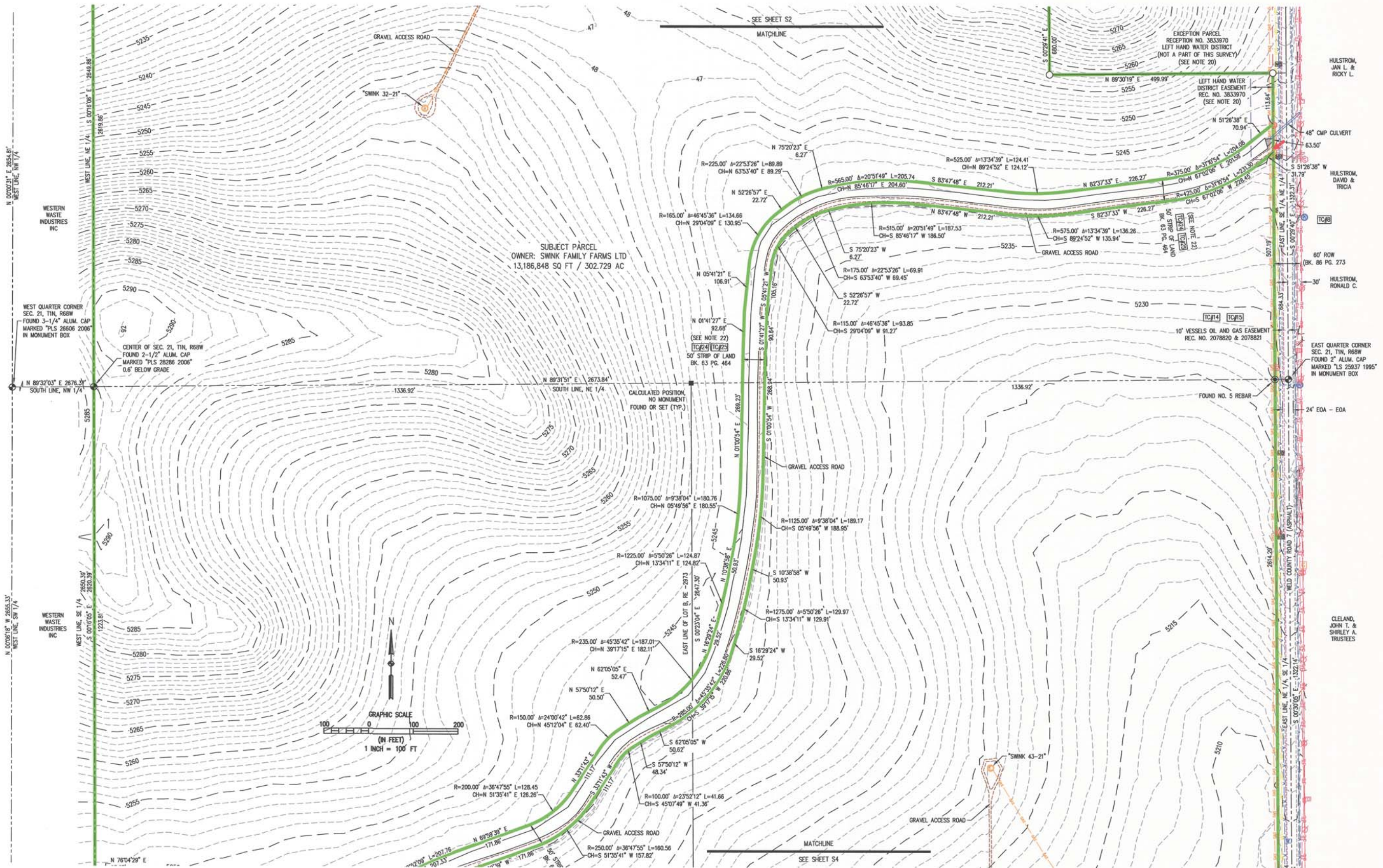
ENCANA OIL & GAS (USA) INC.

ALTA/ACSM TITLE SURVEY
A PORTION OF THE E 1/2 OF SECTION 21, T1N,
WELD COUNTY, COLORADO

DRAWING SIZE	24" X 36"
JOB NO.	226
DRAWING NAME	226 REC SURVEY OASS CDF - ALTA.dwg
SHEET	2 of 4
S2	

S2

ALTA/ACSM LAND TITLE SURVEY
A PARCEL OF LAND LOCATED IN THE EAST HALF OF SECTION 21,
TOWNSHIP 1 NORTH, RANGE 68 WEST OF THE 6TH P.M.
COUNTY OF WELD, STATE OF COLORADO



BASLINE
Engineering · Planning · Surveying

DRAWN BY
DAM

CHECKED BY
MRE

REVISION DESCRIPTION	DATE

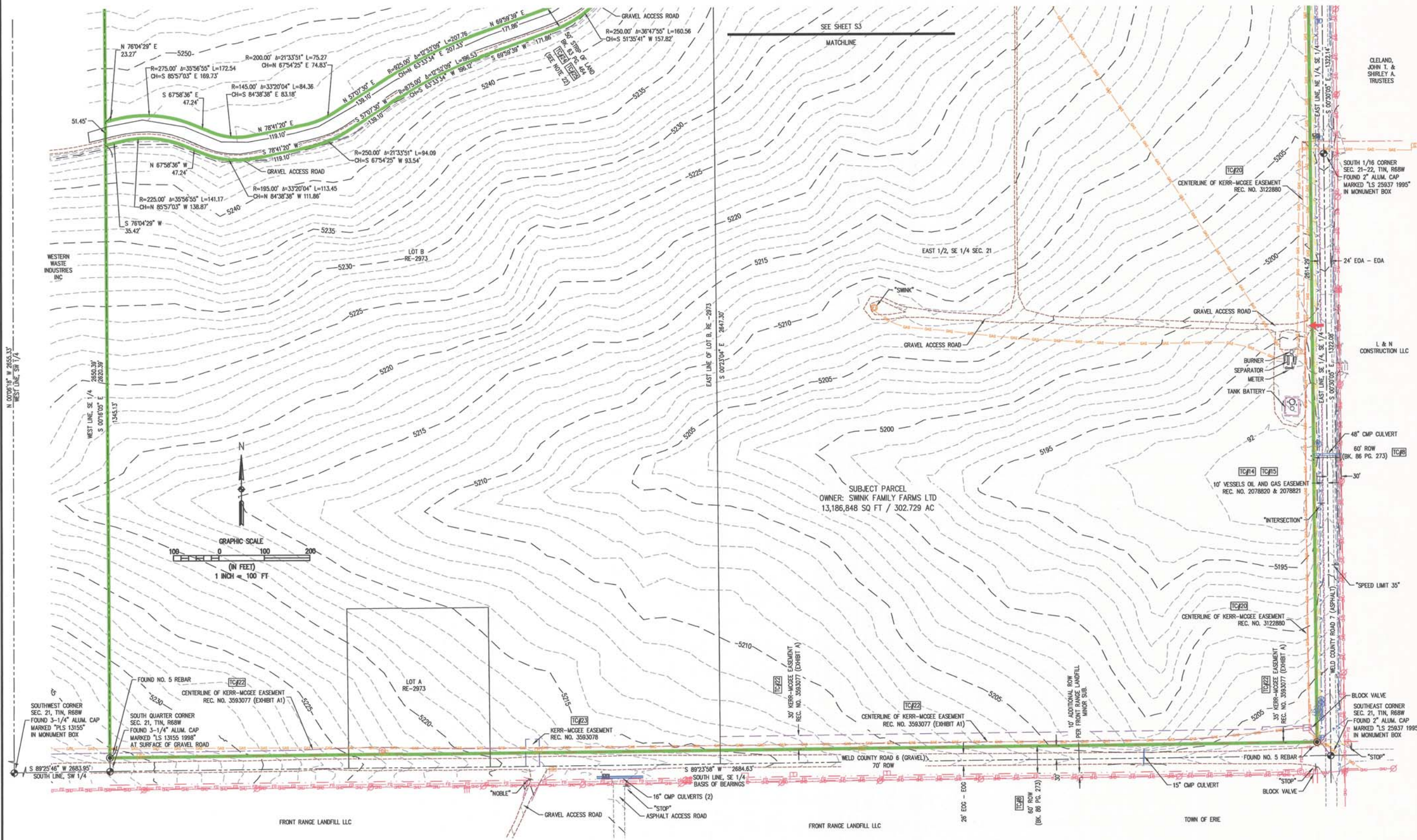
ENCANA OIL & GAS (USA) INC.

ALTA/ACSM TITLE SURVEY
A PORTION OF THE E 1/2 OF SECTION 21, T1N, R68W
WELD COUNTY, COLORADO

DRAWING SIZE	24" X 36"
JOB NO.	226
DRAWING NAME	226 REC SURVEY OASIS CDF - ALTA.dwg
SHEET	3 OF 4

M:\Well Projects-Planning\226 - Encana Oasis COF\226 BEC SURVEY OASIS COF - ALTA.dwg, 9/12/2013 2:20:42 PM, Denny Miller

ALTA/ACSM LAND TITLE SURVEY
A PARCEL OF LAND LOCATED IN THE EAST HALF OF SECTION 21,
TOWNSHIP 1 NORTH, RANGE 68 WEST OF THE 6TH P.M.
COUNTY OF WELD, STATE OF COLORADO



BASELINE
Engineering - Planning - Surveying
7017TH AVENUE SUITE 105 - GREELEY, COLORADO 80631
P: 970.353.7600 F: 970.353.7601 www.baselineinc.com

REVISION	DESCRIPTION	DATE	PREPARED BY
1	ENCANA OIL & GAS (USA) INC.		

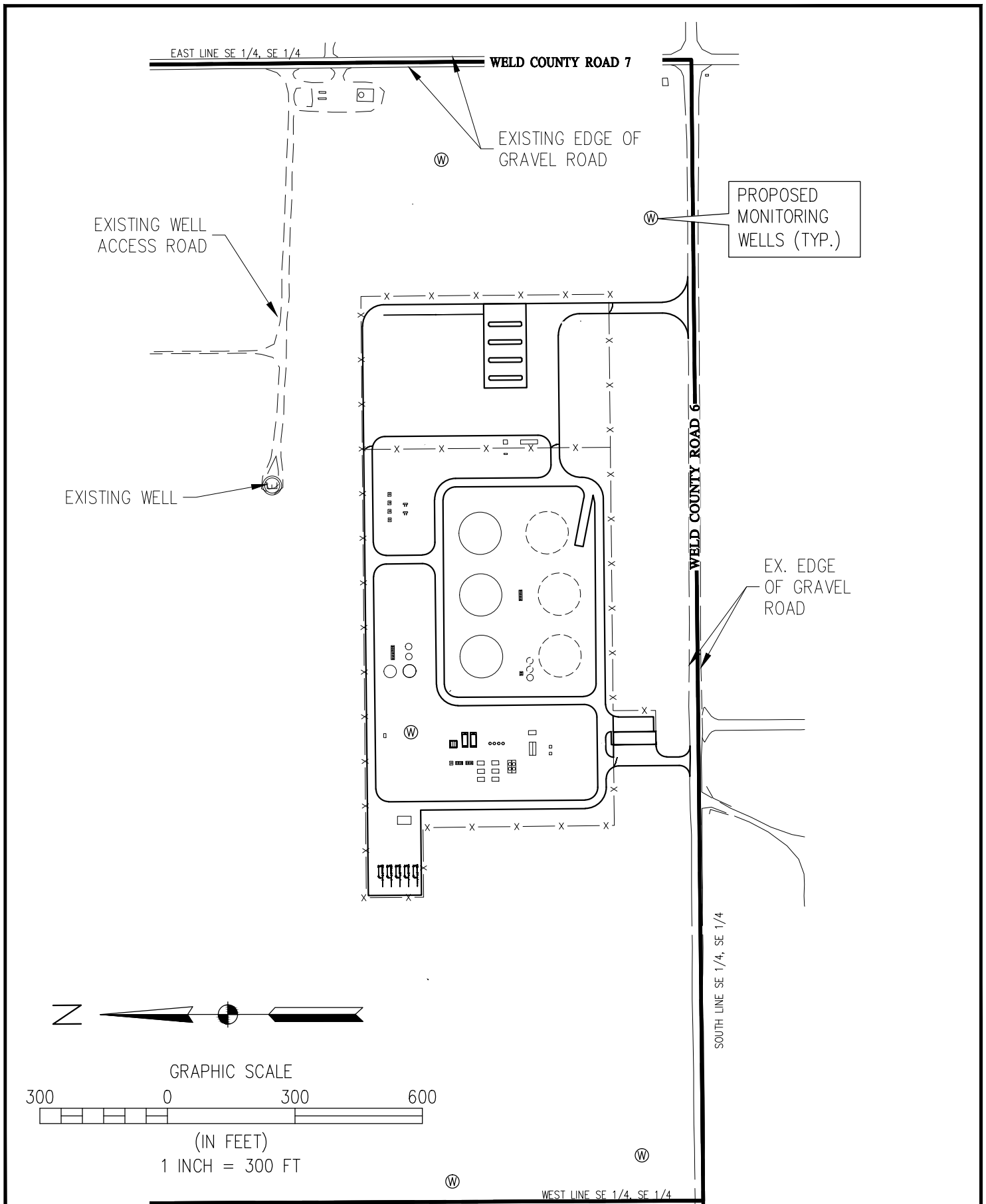
DRAWING	DATE	BY	CHKD
ALTA/ACSM TITLE SURVEY		DAM	
A PORTION OF THE E 1/2 OF SECTION 21, T1N, R68W			
WELD COUNTY, COLORADO			

DRAWING	DATE	BY	CHKD
226 BEC SURVEY OASIS COF - ALTA.dwg		DAM	
SHEET 4 OF 4			

DRAWING SIZE: 24" X 36"
JOB NO: 226
DRAWING NAME: 226 BEC SURVEY OASIS COF - ALTA.dwg
SHEET 4 OF 4
S4

Figure 3: Groundwater Monitoring Locations

\\server-golden\engr\PLANNING LLC\226 Encana Weld CO USR\Form 28\Drawings\Figure 1 Topographic & Hydro Map 2014.3.21.dwg, 3/21/2014 1:11:18 PM, Cory Miller



700 12TH STREET, SUITE 220 • GOLDEN, COLORADO 80401
P: 303.940.8966 • F: 303.940.8959 • www.baselinecorp.com

ENCANA OIL & GAS (USA), INC.

TOWN OF ERIE

WELD COUNTY

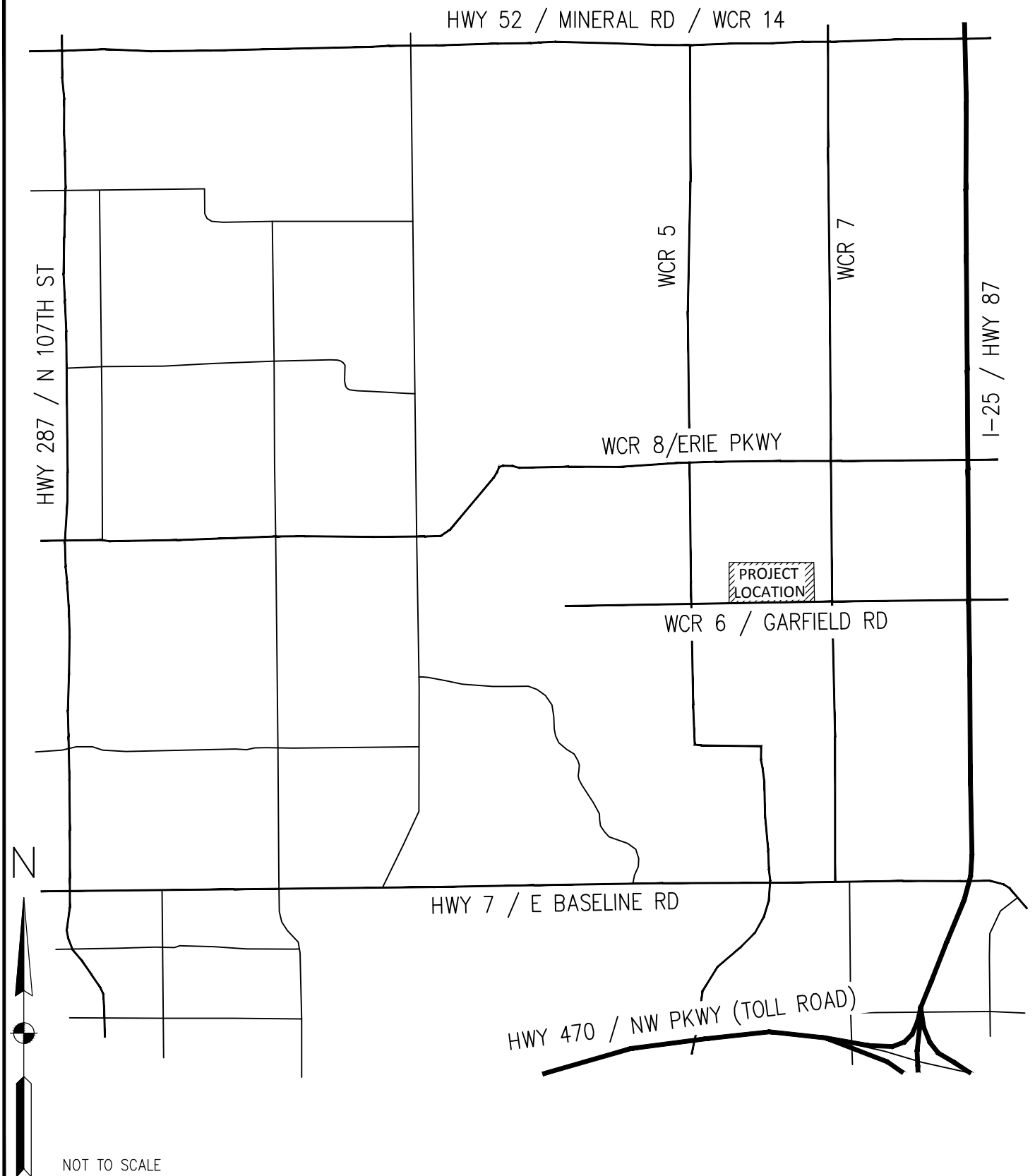
FIGURE 3: GROUNDWATER MONITORING LOCATIONS

SECTION 21, TOWNSHIP 1N, RANGE 68W

DESIGNED BY	CRM		INITIAL SUBMITTAL	
	CRM		DRAWING SIZE	8.5" X 11"
DRAWN BY	CRM		SURVEY FIRM	BASELINE ENG
	CRM		SURVEY DATE	
CHECKED BY			JOB NO.	PL226
			DRAWING NAME	Figure 3 GWATER MONITORING
		SHEET	1	OF 1

Figure V-1: Vicinity Map

N: \PLANNING LLC\226 Encana Weld CO USR\Form 28\Drawings\Figure V-1 Vicinity Map.dwg, 9/16/2013 6:37:30 PM, Cory Miller



700 12TH STREET, SUITE 220 • GOLDEN, COLORADO 80401
P: 303.940.9966 • F: 303.940.9959 • www.baselinecorp.com

ENCANA OIL & GAS (USA), INC.

TOWN OF ERIE

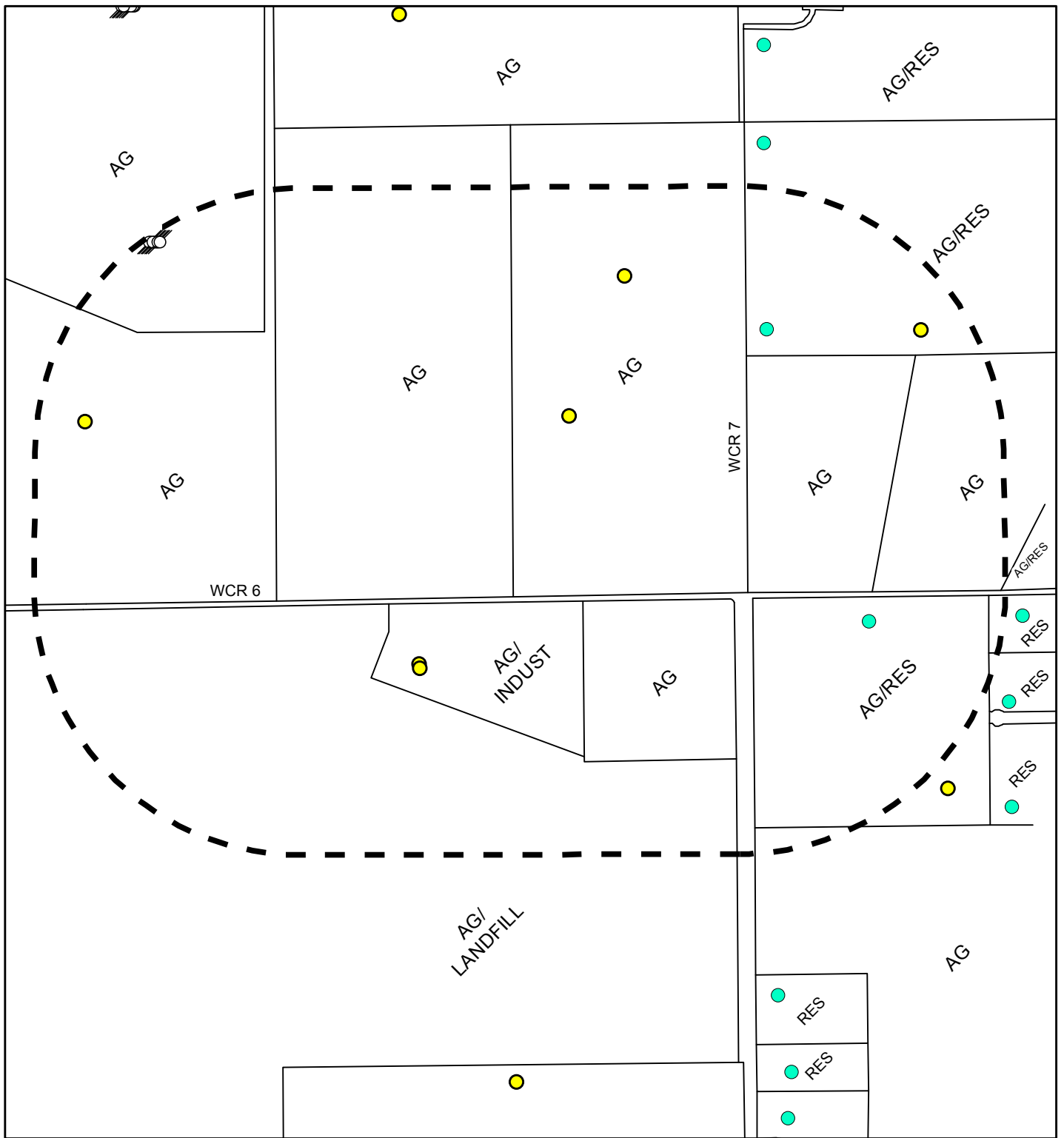
WELD COUNTY

LIQUIDS HANDLING HUB: FIGURE V-1 VICINITY MAP

SECTION 21, TOWNSHIP 1N, RANGE 68W

DESIGNED BY	LTV	INITIAL SUBMITTAL
DRAWING SIZE	8.5" X 11"	
SURVEY FIRM	BASELINE, ENG	SURVEY DATE
JOB NO.	PL 226	
DRAWING NAME	Figure V-1 Vicinity Map.dwg	
CHECKED BY	LTV	SHEET 1 OF 1

Figure LU-1: Land Use Map



0 400 800 1,600 Feet

1 inch = 800 feet

Legend

— COUNTY PARCELS

— 1,500' BUFFER FROM DISTURBED AREA

LAND USE:

AG = AGRICULTURAL

RES = RESIDENTIAL

INDUST = INDUSTRIAL

● RESIDENCE

○ O&G ABANDONED LOCATION

● O&G PRODUCING WELL

BASELINE
Engineering - Planning - Surveying

700 12TH STREET, SUITE 220 • GOLDEN, COLORADO 80401
P: 303.940.9966 • F: 303.940.9959 • www.baselinecorp.com

ENCANA OIL & GAS (USA), INC.

TOWN OF ERIE

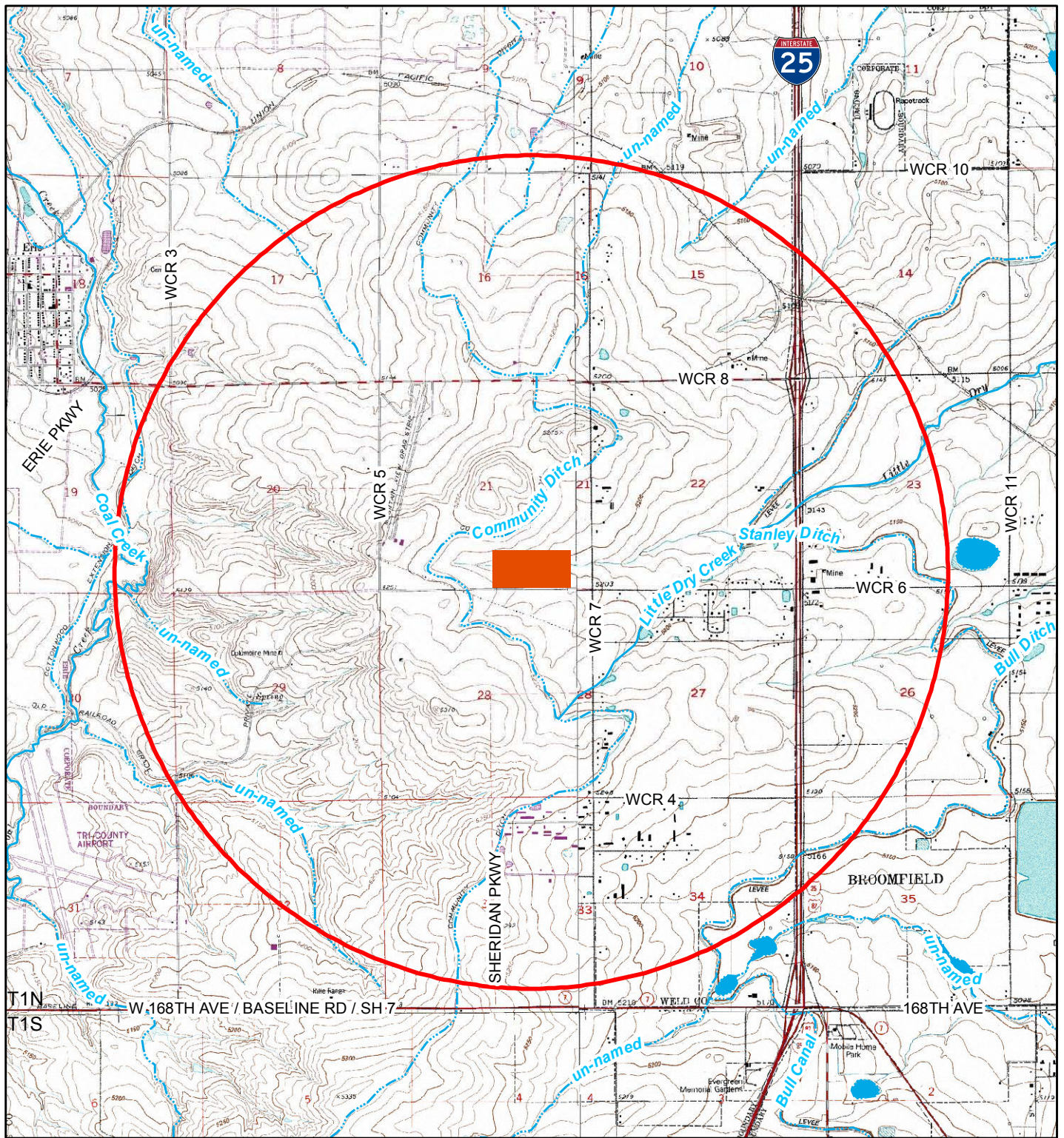
WELD COUNTY

LIQUIDS HANDLING HUB: FIGURE LU-1 EXISTING LAND USE

SECTION 21 TOWNSHIP 1N RANGE 68W

DESIGNED BY	INITIAL SUBMITTAL
—	DRAWING SIZE 8.5" X 11"
	SURVEY FIRM BASELINE, ENG
	SURVEY DATE
DRAWN BY ESW	JOB NO. PL 226
	DRAWING NAME
	Figure LU-1 Existing Land Use
CHECKED BY NN	SHEET 1 OF 1

Figure SW-1: Surface Water Map



Legend

- 2 MILE RADIUS FROM FACILITY REF. POINT
- ~ INTERMITTENT STREAM
- PERENNIAL STREAM
- LAKES AND RESERVOIRS
- LIQUIDS HANDLING HUB

Hydrology per Colo. Div. of Water Resources



700 12TH STREET, SUITE 220 • GOLDEN, COLORADO 80401
P: 303.940.8966 • F: 303.940.8959 • www.baselinecorp.com

ENCANA OIL & GAS (USA), INC.

TOWN OF ERIE WELD COUNTY
LIQUIDS HANDLING HUB: FIGURE SW-1 SURFACE WATER MAP
SECTION 21 TOWNSHIP 1N RANGE 68W

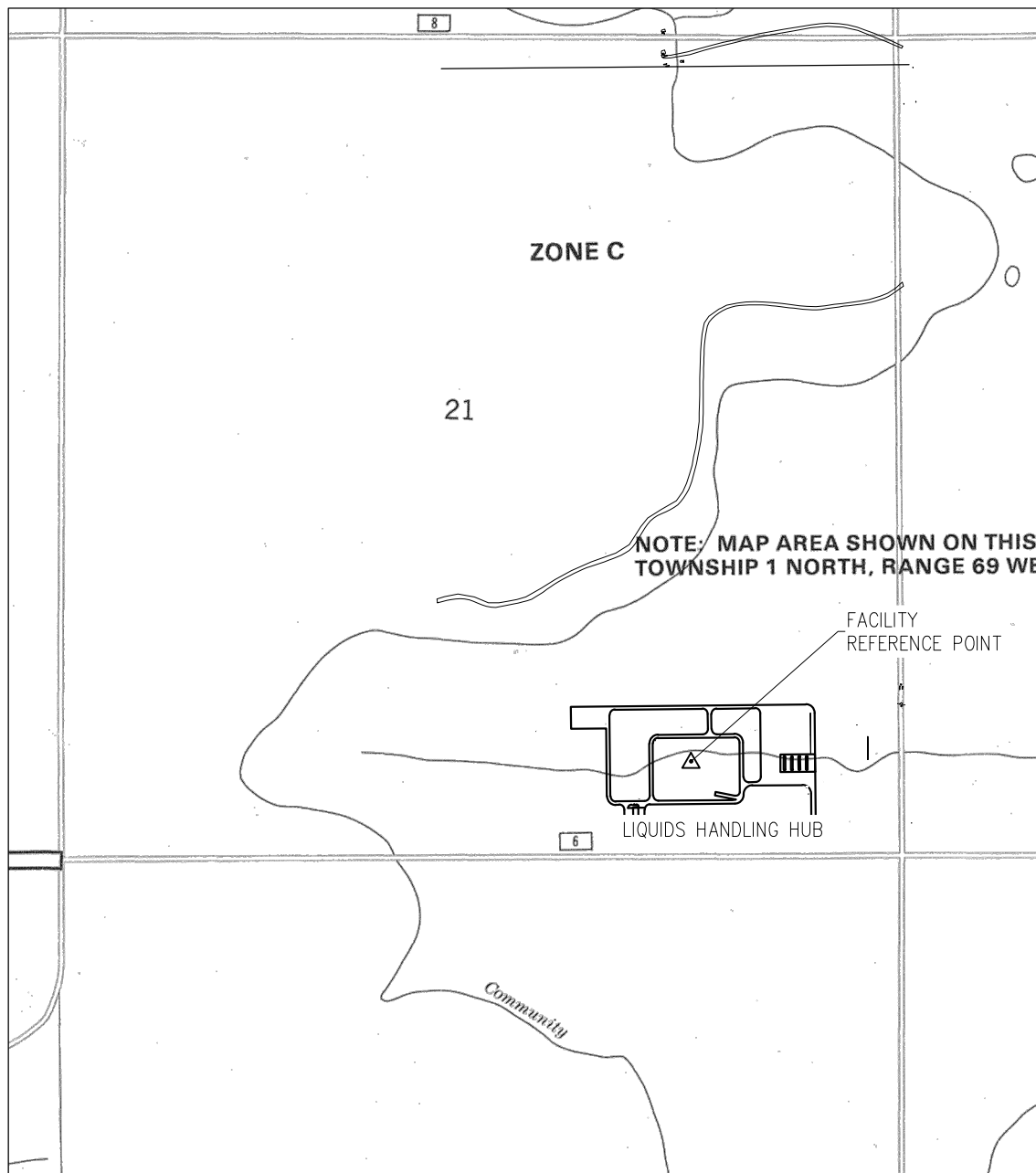
DESIGNED BY	—	INITIAL SUBMITTAL
DRAWN BY	ESW	DRAWING SIZE 8.5" X 11"
CHECKED BY	NN	SURVEY FIRM SURVEY DATE
		BASELINE ENG
		JOB NO. PL 226
		DRAWING NAME
		Figure SW-1 Surface Water Map
		SHEET 1 OF 1

Figure F-1: Floodplain Map

\\server-golden\engr\PLANNING LLC\226 Encana Weld CO USR\Drawings\Figure 1 Topographic & Hydro Map 2014.3.21.dwg, 3/21/2014 1:10:52 PM, Cory Miller



0 2000
Scale 1" = 2000 ft



700 12TH STREET, SUITE 220 • GOLDEN, COLORADO 80401
P: 303.940.8966 • F: 303.940.8969 • www.baselinecorp.com

ENCANA OIL & GAS (USA), INC.

TOWN OF ERIE

WELD COUNTY

LIQUIDS HANDLING HUB: FIGURE F-1 FLOODPLAIN MAP

SECTION 21, TOWNSHIP 1N, RANGE 68W

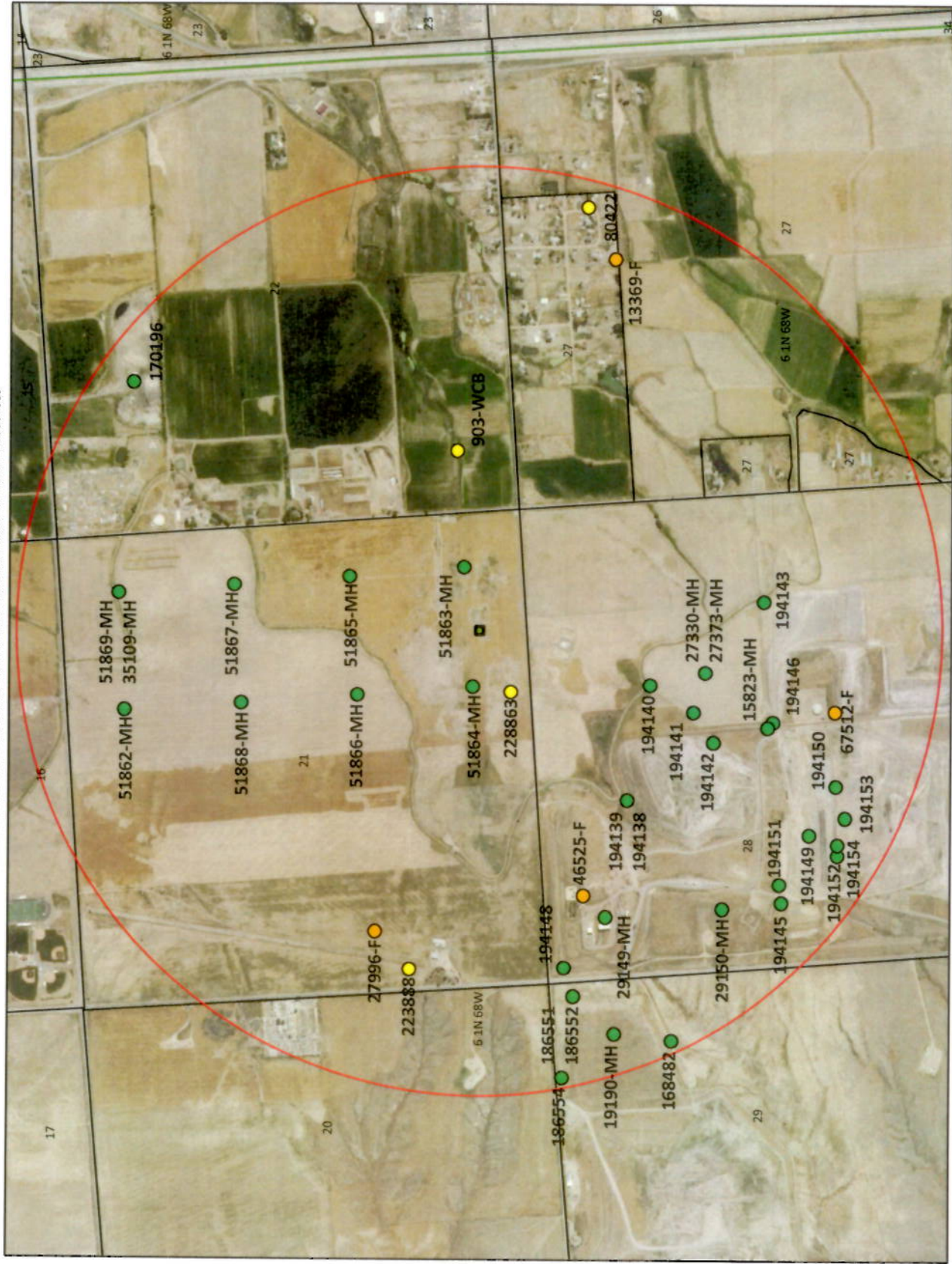
DESIGNED BY CRM	INITIAL SUBMITTAL	
	DRAWING SIZE	8.5" X 11"
DRAWN BY CRM	SURVEY FIRM	SURVEY DATE
	BASELINE, ENG	
CHECKED BY	JOB NO.	PL226
	DRAWING NAME	Figure F-1 Floodplain Map
	SHEET	1 OF 1

Figure GW-1: Ground Water Well Map

Permitted Water Wells Within a One Mile Radius Of Proposed Hub

Township/Range - 1N 68W

All Information was collected from the Colorado Division of Water Resources



LEGEND

- 1 Mile Buffer
- Domestic Water Wells
- Liquids Handling Hub
- Commercial/Irrigation Water Wells
- Monitoring Water Wells

