

Anadarko Petroleum Corp.

Weld County, CO (NAD 83)

Sec. 24-T3N-R68W

BENSON FARMS 12C-23HZ

Plan A

Plan: Rev A0 Permit

Sperry Drilling Services

Proposal Report

18 February, 2014

Well Coordinates: 1,319,765.68 N, 3,150,662.78 E (40° 12' 35.63" N, 104° 57' 37.98" W)

Ground Level: 4,957.00 usft

Local Coordinate Origin:

Viewing Datum:

TVDs to System:

North Reference:

Unit System:

Geodetic Scale Factor Applied

Version: 5000.1 Build: 70

Centered on Well BENSON FARMS 12C-23HZ

RKB = 17' @ 4974.00usft (Drilling Rig)

N

True

Dec-Deg - API - US Survey Feet - Custom

HALLIBURTON

Project: Weld County, CO (NAD 83)
Site: Sec. 24-T3N-R68W
Well: BENSON FARMS 12C-23HZ
Wellbore: Plan A
Design: Rev A0 Permit

Anadarko Petroleum Corp.

HALLIBURTON
Sperry Drilling

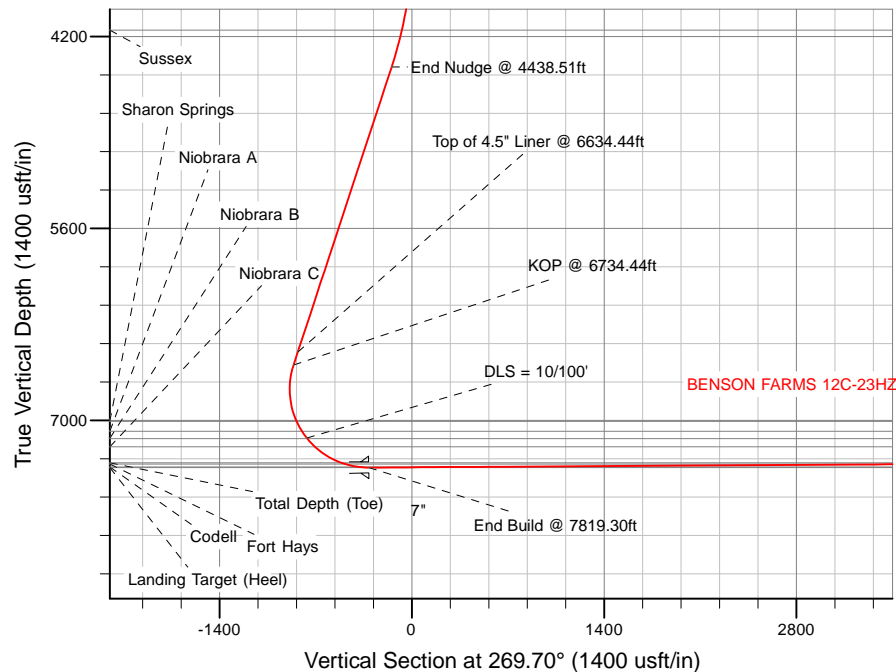
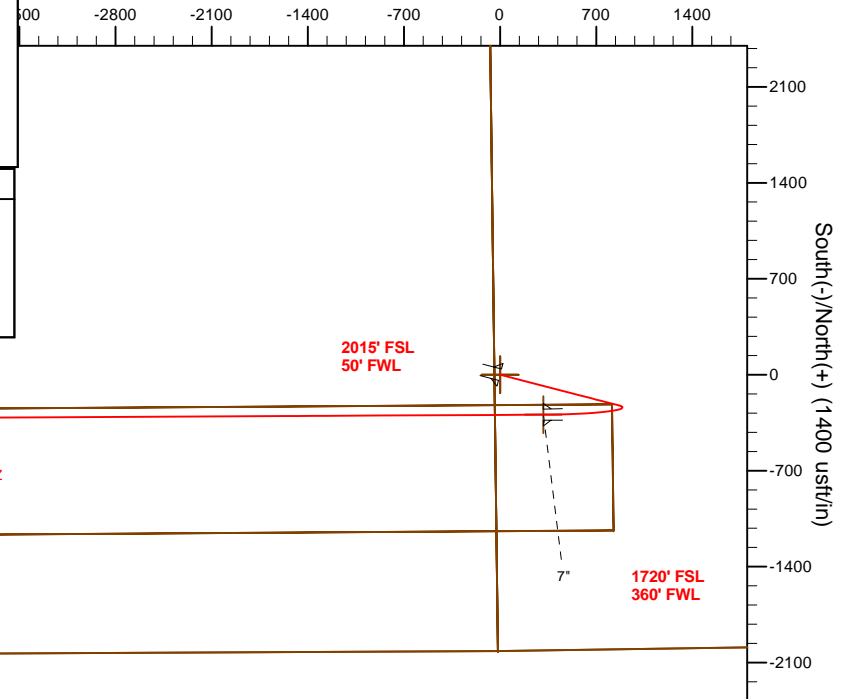
SECTION DETAILS

Sec	MD	Inc	Azi	TVD	+N/-S	+E/-W	Dleg	TFace	VSec	Target
1	0.00	0.00	0.00	0.00	0.00	0.00	0.00	0.00	0.00	
2	3500.00	0.00	0.00	3500.00	0.00	0.00	0.00	0.00	0.00	
3	4438.51	18.77	104.48	4421.81	-38.10	147.52	2.00	104.48	-147.32	
4	6734.44	18.77	104.48	6595.64	-222.85	862.81	0.00	0.00	-861.63	
5	7819.30	90.36	269.70	7344.00	-291.06	315.06	10.00	164.39	-313.53	BENSON FARMS 12C-23HZ_CP
6	13392.77	90.36	269.70	7309.00	-320.38	-5258.23	0.00	0.00	5259.84	BENSON FARMS 12C-23HZ_BHL

WELLBORE TARGET DETAILS (LAT/LONG)

Name	TVD	+N/-S	+E/-W	Latitude	Longitude	
BENSON FARMS 12C-23HZ_LD	0.00	0.00	0.00	40° 12' 35.625 N	104° 57' 37.980 W	Polygon
BENSON FARMS 12C-23HZ_SEC	0.00	0.00	0.00	40° 12' 35.625 N	104° 57' 37.980 W	Polygon
BENSON FARMS 12C-23HZ_SHL	0.00	0.00	0.00	40° 12' 35.625 N	104° 57' 37.980 W	Polygon
BENSON FARMS 12C-23HZ_BHL	7309.00	-320.38	-5258.23	40° 12' 32.454 N	104° 58' 45.754 W	Point
BENSON FARMS 12C-23HZ_CP	7344.00	-291.06	315.06	40° 12' 32.749 N	104° 57' 33.919 W	Point

est(-)/East(+) (1400 usft/in)



TVD

MD

6500.96
6595.64

6634.44
6734.44

Top of 4.5" Liner @ 6634.44ft
KOP @ 6734.44ft

WELL DETAILS: BENSON FARMS 12C-23HZ

Ground Level: 4957.00

RKB = 17' @ 4974.00usft (Drilling Rig)

Plan: Rev A0 Permit (BENSON FARMS 12C-23HZ/Plan A)

Created By: Clint Eshelman

Date: 2/18/2014

Reviewed: _____

Date: _____

Plan Report for BENSON FARMS 12C-23HZ - Rev A0 Permit

Measured Depth (usft)	Inclination (°)	Azimuth (°)	Vertical Depth (usft)	+N/-S (usft)	+E/-W (usft)	Vertical Section (usft)	Dogleg Rate (°/100usft)	Build Rate (°/100usft)	Turn Rate (°/100usft)	Toolface Azimuth (°)
0.00	0.00	0.00	0.00	0.00	0.00	0.00	0.00	0.00	0.00	0.00
BENSON FARMS 12C-23HZ_LD - BENSON FARMS 12C-23HZ_SHL - BENSON FARMS 12C-23HZ_SEC										
100.00	0.00	0.00	100.00	0.00	0.00	0.00	0.00	0.00	0.00	0.00
200.00	0.00	0.00	200.00	0.00	0.00	0.00	0.00	0.00	0.00	0.00
300.00	0.00	0.00	300.00	0.00	0.00	0.00	0.00	0.00	0.00	0.00
400.00	0.00	0.00	400.00	0.00	0.00	0.00	0.00	0.00	0.00	0.00
500.00	0.00	0.00	500.00	0.00	0.00	0.00	0.00	0.00	0.00	0.00
600.00	0.00	0.00	600.00	0.00	0.00	0.00	0.00	0.00	0.00	0.00
700.00	0.00	0.00	700.00	0.00	0.00	0.00	0.00	0.00	0.00	0.00
800.00	0.00	0.00	800.00	0.00	0.00	0.00	0.00	0.00	0.00	0.00
900.00	0.00	0.00	900.00	0.00	0.00	0.00	0.00	0.00	0.00	0.00
1,000.00	0.00	0.00	1,000.00	0.00	0.00	0.00	0.00	0.00	0.00	0.00
1,056.00	0.00	0.00	1,056.00	0.00	0.00	0.00	0.00	0.00	0.00	0.00
Fox Hills Marker										
1,100.00	0.00	0.00	1,100.00	0.00	0.00	0.00	0.00	0.00	0.00	0.00
1,106.00	0.00	0.00	1,106.00	0.00	0.00	0.00	0.00	0.00	0.00	0.00
9 5/8"										
1,200.00	0.00	0.00	1,200.00	0.00	0.00	0.00	0.00	0.00	0.00	0.00
1,300.00	0.00	0.00	1,300.00	0.00	0.00	0.00	0.00	0.00	0.00	0.00
1,400.00	0.00	0.00	1,400.00	0.00	0.00	0.00	0.00	0.00	0.00	0.00
1,500.00	0.00	0.00	1,500.00	0.00	0.00	0.00	0.00	0.00	0.00	0.00
1,600.00	0.00	0.00	1,600.00	0.00	0.00	0.00	0.00	0.00	0.00	0.00
1,700.00	0.00	0.00	1,700.00	0.00	0.00	0.00	0.00	0.00	0.00	0.00
1,800.00	0.00	0.00	1,800.00	0.00	0.00	0.00	0.00	0.00	0.00	0.00
1,900.00	0.00	0.00	1,900.00	0.00	0.00	0.00	0.00	0.00	0.00	0.00
2,000.00	0.00	0.00	2,000.00	0.00	0.00	0.00	0.00	0.00	0.00	0.00
2,100.00	0.00	0.00	2,100.00	0.00	0.00	0.00	0.00	0.00	0.00	0.00
2,200.00	0.00	0.00	2,200.00	0.00	0.00	0.00	0.00	0.00	0.00	0.00
2,300.00	0.00	0.00	2,300.00	0.00	0.00	0.00	0.00	0.00	0.00	0.00
2,400.00	0.00	0.00	2,400.00	0.00	0.00	0.00	0.00	0.00	0.00	0.00
2,500.00	0.00	0.00	2,500.00	0.00	0.00	0.00	0.00	0.00	0.00	0.00
2,600.00	0.00	0.00	2,600.00	0.00	0.00	0.00	0.00	0.00	0.00	0.00
2,700.00	0.00	0.00	2,700.00	0.00	0.00	0.00	0.00	0.00	0.00	0.00
2,800.00	0.00	0.00	2,800.00	0.00	0.00	0.00	0.00	0.00	0.00	0.00
2,900.00	0.00	0.00	2,900.00	0.00	0.00	0.00	0.00	0.00	0.00	0.00
3,000.00	0.00	0.00	3,000.00	0.00	0.00	0.00	0.00	0.00	0.00	0.00
3,100.00	0.00	0.00	3,100.00	0.00	0.00	0.00	0.00	0.00	0.00	0.00
3,200.00	0.00	0.00	3,200.00	0.00	0.00	0.00	0.00	0.00	0.00	0.00
3,300.00	0.00	0.00	3,300.00	0.00	0.00	0.00	0.00	0.00	0.00	0.00
3,400.00	0.00	0.00	3,400.00	0.00	0.00	0.00	0.00	0.00	0.00	0.00
3,500.00	0.00	0.00	3,500.00	0.00	0.00	0.00	0.00	0.00	0.00	0.00
Begin Nudge @ 3500.00ft										
3,600.00	2.00	104.48	3,599.98	-0.44	1.69	-1.69	2.00	2.00	0.00	104.48
3,693.15	3.86	104.48	3,693.00	-1.63	6.30	-6.29	2.00	2.00	0.00	0.00
Parkman										
3,700.00	4.00	104.48	3,699.84	-1.75	6.76	-6.75	2.00	2.00	0.00	0.00
3,800.00	6.00	104.48	3,799.45	-3.92	15.19	-15.17	2.00	2.00	0.00	0.00
3,900.00	8.00	104.48	3,898.70	-6.97	26.99	-26.96	2.00	2.00	0.00	0.00
4,000.00	10.00	104.48	3,997.47	-10.88	42.14	-42.08	2.00	2.00	0.00	0.00
4,100.00	12.00	104.48	4,095.62	-15.66	60.61	-60.53	2.00	2.00	0.00	0.00
4,158.79	13.18	104.48	4,153.00	-18.86	73.02	-72.92	2.00	2.00	0.00	0.00
Sussex										
4,200.00	14.00	104.48	4,193.06	-21.28	82.39	-82.28	2.00	2.00	0.00	0.00
4,300.00	16.00	104.48	4,289.64	-27.75	107.45	-107.30	2.00	2.00	0.00	0.00
4,400.00	18.00	104.48	4,385.27	-35.06	135.76	-135.57	2.00	2.00	0.00	0.00
4,438.51	18.77	104.48	4,421.81	-38.10	147.52	-147.32	2.00	2.00	0.00	0.00
End Nudge @ 4438.51ft										

Plan Report for BENSON FARMS 12C-23HZ - Rev A0 Permit

Measured Depth (usft)	Inclination (°)	Azimuth (°)	Vertical Depth (usft)	+N/-S (usft)	+E/-W (usft)	Vertical Section (usft)	Dogleg Rate (°/100usft)	Build Rate (°/100usft)	Turn Rate (°/100usft)	Toolface Azimuth (°)
4,500.00	18.77	104.48	4,480.03	-43.05	166.67	-166.45	0.00	0.00	0.00	0.00
4,600.00	18.77	104.48	4,574.71	-51.10	197.83	-197.56	0.00	0.00	0.00	0.00
4,700.00	18.77	104.48	4,669.40	-59.14	228.98	-228.67	0.00	0.00	0.00	0.00
4,800.00	18.77	104.48	4,764.08	-67.19	260.14	-259.78	0.00	0.00	0.00	0.00
4,900.00	18.77	104.48	4,858.76	-75.24	291.29	-290.90	0.00	0.00	0.00	0.00
5,000.00	18.77	104.48	4,953.44	-83.28	322.45	-322.01	0.00	0.00	0.00	0.00
5,100.00	18.77	104.48	5,048.12	-91.33	353.60	-353.12	0.00	0.00	0.00	0.00
5,200.00	18.77	104.48	5,142.80	-99.38	384.76	-384.23	0.00	0.00	0.00	0.00
5,300.00	18.77	104.48	5,237.49	-107.42	415.91	-415.35	0.00	0.00	0.00	0.00
5,400.00	18.77	104.48	5,332.17	-115.47	447.07	-446.46	0.00	0.00	0.00	0.00
5,500.00	18.77	104.48	5,426.85	-123.52	478.22	-477.57	0.00	0.00	0.00	0.00
5,600.00	18.77	104.48	5,521.53	-131.57	509.38	-508.68	0.00	0.00	0.00	0.00
5,700.00	18.77	104.48	5,616.21	-139.61	540.53	-539.80	0.00	0.00	0.00	0.00
5,800.00	18.77	104.48	5,710.89	-147.66	571.69	-570.91	0.00	0.00	0.00	0.00
5,900.00	18.77	104.48	5,805.58	-155.71	602.84	-602.02	0.00	0.00	0.00	0.00
6,000.00	18.77	104.48	5,900.26	-163.75	634.00	-633.13	0.00	0.00	0.00	0.00
6,100.00	18.77	104.48	5,994.94	-171.80	665.15	-664.24	0.00	0.00	0.00	0.00
6,200.00	18.77	104.48	6,089.62	-179.85	696.31	-695.36	0.00	0.00	0.00	0.00
6,300.00	18.77	104.48	6,184.30	-187.89	727.46	-726.47	0.00	0.00	0.00	0.00
6,400.00	18.77	104.48	6,278.98	-195.94	758.62	-757.58	0.00	0.00	0.00	0.00
6,500.00	18.77	104.48	6,373.67	-203.99	789.77	-788.69	0.00	0.00	0.00	0.00
6,600.00	18.77	104.48	6,468.35	-212.03	820.93	-819.81	0.00	0.00	0.00	0.00
6,634.44	18.77	104.48	6,500.96	-214.81	831.66	-830.52	0.00	0.00	0.00	0.00
Top of 4.5" Liner @ 6634.44ft										
6,700.00	18.77	104.48	6,563.03	-220.08	852.08	-850.92	0.00	0.00	0.00	0.00
6,734.44	18.77	104.48	6,595.64	-222.85	862.81	-861.63	0.00	0.00	0.00	0.00
KOP @ 6734.44ft										
6,800.00	12.58	112.59	6,658.74	-228.24	879.63	-878.43	10.00	-9.45	12.37	164.39
6,900.00	5.21	162.12	6,757.58	-236.76	891.11	-889.86	10.00	-7.37	49.52	156.57
7,000.00	9.78	239.38	6,856.90	-245.43	885.18	-883.88	10.00	4.57	77.26	107.48
7,100.00	19.07	255.11	6,953.68	-253.97	862.03	-860.69	10.00	9.29	15.72	30.65
7,156.37	24.55	258.70	7,006.00	-258.64	841.63	-840.27	10.00	9.72	6.37	15.37
Sharon Springs										
7,200.00	28.83	260.58	7,044.97	-262.13	822.36	-820.98	10.00	9.81	4.32	12.03
7,239.61	32.73	261.90	7,079.00	-265.21	802.33	-800.93	10.00	9.86	3.32	10.34
Niobrara A										
7,300.00	38.70	263.44	7,128.01	-269.67	767.38	-765.96	10.00	9.89	2.56	9.21
DLS = 10/100'										
7,305.14	39.21	263.55	7,132.00	-270.03	764.17	-762.75	10.00	9.90	2.19	7.96
Niobrara B										
7,387.65	47.40	265.08	7,192.00	-275.58	707.90	-706.45	10.00	9.92	1.85	7.87
Niobrara C										
7,400.00	48.62	265.28	7,200.26	-276.35	698.76	-697.30	10.00	9.93	1.57	6.75
7,500.00	58.56	266.62	7,259.54	-281.96	618.57	-617.09	10.00	9.94	1.35	6.63
7,600.00	68.52	267.71	7,304.04	-286.35	529.27	-527.76	10.00	9.95	1.08	5.82
7,645.44	73.04	268.15	7,319.00	-287.90	486.40	-484.89	10.00	9.96	0.97	5.34
Fort Hays										
7,700.00	78.48	268.65	7,332.42	-289.37	433.56	-432.04	10.00	9.96	0.92	5.19
7,739.71	82.43	269.01	7,339.00	-290.17	394.42	-392.90	10.00	9.96	0.89	5.07
Codell										
7,800.00	88.44	269.53	7,343.80	-290.94	334.35	-332.82	10.00	9.96	0.87	5.01
7,819.30	90.36	269.70	7,344.00	-291.06	315.06	-313.53	10.00	9.96	0.87	4.97
End Build @ 7819.30ft - Landing Target (Heel) - 7" - BENSON FARMS 12C-23HZ_CP										
7,900.00	90.36	269.70	7,343.49	-291.49	234.36	-232.83	0.00	0.00	0.00	4.97
8,000.00	90.36	269.70	7,342.87	-292.02	134.36	-132.83	0.00	0.00	0.00	0.00
8,100.00	90.36	269.70	7,342.24	-292.54	34.36	-32.83	0.00	0.00	0.00	0.00
8,200.00	90.36	269.70	7,341.61	-293.07	-65.63	67.17	0.00	0.00	0.00	0.00
8,300.00	90.36	269.70	7,340.98	-293.59	-165.63	167.17	0.00	0.00	0.00	0.00
8,400.00	90.36	269.70	7,340.35	-294.12	-265.63	267.16	0.00	0.00	0.00	0.00

Plan Report for BENSON FARMS 12C-23HZ - Rev A0 Permit

Measured Depth (usft)	Inclination (°)	Azimuth (°)	Vertical Depth (usft)	+N/-S (usft)	+E/-W (usft)	Vertical Section (usft)	Dogleg Rate (°/100usft)	Build Rate (°/100usft)	Turn Rate (°/100usft)	Toolface Azimuth (°)
8,500.00	90.36	269.70	7,339.73	-294.65	-365.62	367.16	0.00	0.00	0.00	0.00
8,600.00	90.36	269.70	7,339.10	-295.17	-465.62	467.16	0.00	0.00	0.00	0.00
8,700.00	90.36	269.70	7,338.47	-295.70	-565.62	567.16	0.00	0.00	0.00	0.00
8,800.00	90.36	269.70	7,337.84	-296.22	-665.61	667.16	0.00	0.00	0.00	0.00
8,900.00	90.36	269.70	7,337.21	-296.75	-765.61	767.15	0.00	0.00	0.00	0.00
9,000.00	90.36	269.70	7,336.59	-297.28	-865.61	867.15	0.00	0.00	0.00	0.00
9,100.00	90.36	269.70	7,335.96	-297.80	-965.60	967.15	0.00	0.00	0.00	0.00
9,200.00	90.36	269.70	7,335.33	-298.33	-1,065.60	1,067.15	0.00	0.00	0.00	0.00
9,300.00	90.36	269.70	7,334.70	-298.85	-1,165.60	1,167.15	0.00	0.00	0.00	0.00
9,400.00	90.36	269.70	7,334.07	-299.38	-1,265.59	1,267.14	0.00	0.00	0.00	0.00
9,500.00	90.36	269.70	7,333.45	-299.91	-1,365.59	1,367.14	0.00	0.00	0.00	0.00
9,600.00	90.36	269.70	7,332.82	-300.43	-1,465.59	1,467.14	0.00	0.00	0.00	0.00
9,700.00	90.36	269.70	7,332.19	-300.96	-1,565.58	1,567.14	0.00	0.00	0.00	0.00
9,800.00	90.36	269.70	7,331.56	-301.48	-1,665.58	1,667.14	0.00	0.00	0.00	0.00
9,900.00	90.36	269.70	7,330.93	-302.01	-1,765.58	1,767.13	0.00	0.00	0.00	0.00
10,000.00	90.36	269.70	7,330.31	-302.54	-1,865.57	1,867.13	0.00	0.00	0.00	0.00
10,100.00	90.36	269.70	7,329.68	-303.06	-1,965.57	1,967.13	0.00	0.00	0.00	0.00
10,200.00	90.36	269.70	7,329.05	-303.59	-2,065.57	2,067.13	0.00	0.00	0.00	0.00
10,300.00	90.36	269.70	7,328.42	-304.11	-2,165.56	2,167.13	0.00	0.00	0.00	0.00
10,400.00	90.36	269.70	7,327.79	-304.64	-2,265.56	2,267.12	0.00	0.00	0.00	0.00
10,500.00	90.36	269.70	7,327.17	-305.17	-2,365.56	2,367.12	0.00	0.00	0.00	0.00
10,600.00	90.36	269.70	7,326.54	-305.69	-2,465.55	2,467.12	0.00	0.00	0.00	0.00
10,700.00	90.36	269.70	7,325.91	-306.22	-2,565.55	2,567.12	0.00	0.00	0.00	0.00
10,800.00	90.36	269.70	7,325.28	-306.74	-2,665.55	2,667.12	0.00	0.00	0.00	0.00
10,900.00	90.36	269.70	7,324.65	-307.27	-2,765.54	2,767.11	0.00	0.00	0.00	0.00
11,000.00	90.36	269.70	7,324.03	-307.80	-2,865.54	2,867.11	0.00	0.00	0.00	0.00
11,100.00	90.36	269.70	7,323.40	-308.32	-2,965.54	2,967.11	0.00	0.00	0.00	0.00
11,200.00	90.36	269.70	7,322.77	-308.85	-3,065.53	3,067.11	0.00	0.00	0.00	0.00
11,300.00	90.36	269.70	7,322.14	-309.37	-3,165.53	3,167.11	0.00	0.00	0.00	0.00
11,400.00	90.36	269.70	7,321.51	-309.90	-3,265.53	3,267.10	0.00	0.00	0.00	0.00
11,500.00	90.36	269.70	7,320.89	-310.43	-3,365.52	3,367.10	0.00	0.00	0.00	0.00
11,600.00	90.36	269.70	7,320.26	-310.95	-3,465.52	3,467.10	0.00	0.00	0.00	0.00
11,700.00	90.36	269.70	7,319.63	-311.48	-3,565.52	3,567.10	0.00	0.00	0.00	0.00
11,800.00	90.36	269.70	7,319.00	-312.00	-3,665.51	3,667.10	0.00	0.00	0.00	0.00
11,900.00	90.36	269.70	7,318.37	-312.53	-3,765.51	3,767.09	0.00	0.00	0.00	0.00
12,000.00	90.36	269.70	7,317.75	-313.06	-3,865.51	3,867.09	0.00	0.00	0.00	0.00
12,100.00	90.36	269.70	7,317.12	-313.58	-3,965.50	3,967.09	0.00	0.00	0.00	0.00
12,200.00	90.36	269.70	7,316.49	-314.11	-4,065.50	4,067.09	0.00	0.00	0.00	0.00
12,300.00	90.36	269.70	7,315.86	-314.63	-4,165.50	4,167.09	0.00	0.00	0.00	0.00
12,400.00	90.36	269.70	7,315.23	-315.16	-4,265.49	4,267.08	0.00	0.00	0.00	0.00
12,500.00	90.36	269.70	7,314.61	-315.69	-4,365.49	4,367.08	0.00	0.00	0.00	0.00
12,600.00	90.36	269.70	7,313.98	-316.21	-4,465.49	4,467.08	0.00	0.00	0.00	0.00
12,700.00	90.36	269.70	7,313.35	-316.74	-4,565.48	4,567.08	0.00	0.00	0.00	0.00
12,800.00	90.36	269.70	7,312.72	-317.26	-4,665.48	4,667.08	0.00	0.00	0.00	0.00
12,900.00	90.36	269.70	7,312.09	-317.79	-4,765.48	4,767.07	0.00	0.00	0.00	0.00
13,000.00	90.36	269.70	7,311.47	-318.32	-4,865.47	4,867.07	0.00	0.00	0.00	0.00
13,100.00	90.36	269.70	7,310.84	-318.84	-4,965.47	4,967.07	0.00	0.00	0.00	0.00
13,200.00	90.36	269.70	7,310.21	-319.37	-5,065.47	5,067.07	0.00	0.00	0.00	0.00
13,300.00	90.36	269.70	7,309.58	-319.89	-5,165.46	5,167.07	0.00	0.00	0.00	0.00
13,392.77	90.36	269.70	7,309.00	-320.38	-5,258.23	5,259.84	0.00	0.00	0.00	0.00

TD Well @ 13392.77ft - Total Depth (Toe) - BENSON FARMS 12C-23HZ_BHL

Plan Report for BENSON FARMS 12C-23HZ - Rev A0 Permit

Plan Annotations

Measured Depth (usft)	Vertical Depth (usft)	Local Coordinates		Comment
		+N/-S (usft)	+E/-W (usft)	
3,500.00	3,500.00	0.00	0.00	Begin Nudge @ 3500.00ft
4,438.51	4,421.81	-38.10	147.52	End Nudge @ 4438.51ft
6,634.44	6,500.96	-214.81	831.66	Top of 4.5" Liner @ 6634.44ft
6,734.44	6,595.64	-222.85	862.81	KOP @ 6734.44ft
7,300.00	7,128.01	-269.67	767.38	DLS = 10/100'
7,819.30	7,344.00	-291.06	315.05	End Build @ 7819.30ft
13,392.77	7,309.00	-320.38	-5,258.23	TD Well @ 13392.77ft

Vertical Section Information

Angle Type	Target	Azimuth (°)	Origin Type	Origin		Start TVD (usft)
				+N/_S (usft)	+E/-W (usft)	
User	No Target (Freehand)	269.70	Slot	0.00	0.00	0.00

Survey tool program

From (usft)	To (usft)	Survey/Plan	Survey Tool
0.00	7,819.30	Rev A0 Permit	MWD
7,819.30	13,392.77	Rev A0 Permit	MWD

Casing Details

Measured Depth (usft)	Vertical Depth (usft)	Name	Casing Diameter (")	Hole Diameter (")
1,106.00	1,106.00	9 5/8"	9-5/8	13-1/2
7,819.30	7,344.00	7"	7	8-3/4

Formation Details

Measured Depth (usft)	Vertical Depth (usft)	Name	Lithology	Dip (°)	Dip Direction (°)
1,056.00	1,056.00	Fox Hills Marker		0.00	
3,693.15	3,693.00	Parkman		0.00	
4,158.79	4,153.00	Sussex		0.00	
7,156.37	7,006.00	Sharon Springs		0.00	
7,239.61	7,079.00	Niobrara A		0.00	
7,305.14	7,132.00	Niobrara B		0.00	
7,387.65	7,192.00	Niobrara C		0.00	
7,645.44	7,319.00	Fort Hays		0.00	
7,739.71	7,339.00	Codell		0.00	
7,819.30	7,344.00	Landing Target (Heel)		0.00	
13,392.77	7,309.00	Total Depth (Toe)		0.00	

Plan Report for BENSON FARMS 12C-23HZ - Rev A0 Permit

Targets associated with this wellbore

Target Name	TVD (usft)	+N/-S (usft)	+E/-W (usft)	Shape
BENSON FARMS 12C-23HZ_LD	0.00	0.00	0.00	Polygon
BENSON FARMS 12C-23HZ_SHL	0.00	0.00	0.00	Point
BENSON FARMS 12C-23HZ_SEC	0.00	0.00	0.00	Point
BENSON FARMS 12C-23HZ_BHL	7,309.00	-320.38	-5,258.23	Point
BENSON FARMS 12C-23HZ_CP	7,344.00	-291.06	315.06	Point

Directional Difficulty Index

Average Dogleg over Survey:	0.00 °/100usft	Maximum Dogleg over Survey:	0.00 °/100usft at 0.00 usft
Net Tortosity applicable to Plans:	0.00 °/100usft	Directional Difficulty Index:	6.376

Audit Info

North Reference Sheet for Sec. 24-T3N-R68W - BENSON FARMS 12C-23HZ - Plan

A

All data is in US Feet unless otherwise stated. Directions and Coordinates are relative to True North Reference.

Vertical Depths are relative to RKB = 17' @ 4974.00usft (Drilling Rig). Northing and Easting are relative to BENSON FARMS 12C-23HZ

Coordinate System is US State Plane 1983, Colorado Northern Zone using datum North American Datum 1983, ellipsoid GRS 1980

Projection method is Lambert Conformal Conic (2 parallel)

Central Meridian is -105.50°, Longitude Origin:0.000000°, Latitude Origin:40.783333°

False Easting: 3,000,000.00usft, False Northing: 1,000,000.00usft, Scale Reduction: 0.99995710

Grid Coordinates of Well: 1,319,765.68 usft N, 3,150,662.78 usft E

Geographical Coordinates of Well: 40° 12' 35.63" N, 104° 57' 37.98" W

Grid Convergence at Surface is: 0.35°

Based upon Minimum Curvature type calculations, at a Measured Depth of 13,392.77usft the Bottom Hole Displacement is 5,267.98usft in the Direction of 266.51° (True).

Magnetic Convergence at surface is: -8.29° (12 February 2014, , BGGM2013)

