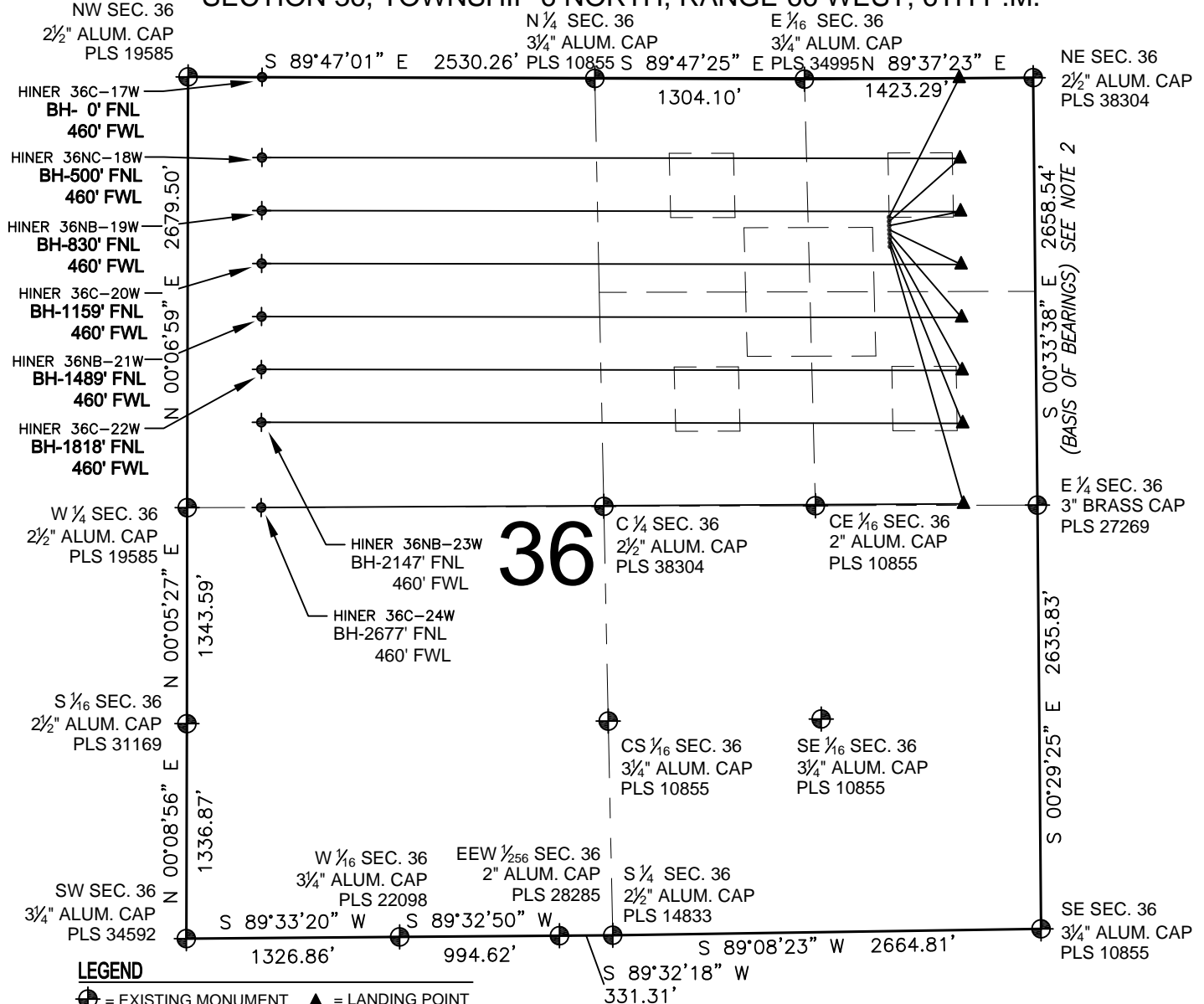


# HINER 36 PAD MULTI-WELL PLAN

SECTION 36, TOWNSHIP 6 NORTH, RANGE 66 WEST, 6TH P.M.



## LEGEND

- ⊕ = EXISTING MONUMENT    ▲ = LANDING POINT
- = PROPOSED WELL        LP = LANDING POINT
- ◆ = EXISTING WELL        BH = BOTTOM HOLE
- ⊙ = BOTTOM HOLE

## NOTES:

- THIS FIELD SURVEY CONFORMS TO THE MINIMUM STANDARDS SET BY THE C.O.G.C.C., RULE NO. 215
- BEARINGS AND DISTANCE SHOWN HEREON ARE GRID AND BASED ON THE COLORADO STATE PLANE COORDINATE SYSTEM, NAD 83/2011 BETWEEN MONUMENTS AS LABELED HEREON AND ELEVATIONS SHOWN ARE NAVD 88, AS DERIVED BY GPS OBSERVATIONS.
- GRID DISTANCES ARE SHOWN, AS MEASURED IN THE FIELD, WITH TIES TO WELLS MEASURED PERPENDICULAR TO SECTION LINES.

## NOTES:

- HINER 36C-17W TO BE AT 862' FNL, 905' FEL. BOTTOM HOLE AT 0' FNL & 460' FWL.
- HINER 36NC-18W TO BE AT 888' FNL, 905' FEL. BOTTOM HOLE AT 500' FNL & 460' FWL.
- HINER 36NB-19W TO BE AT 914' FNL, 904' FEL. BOTTOM HOLE AT 830' FNL & 460' FWL.
- HINER 36C-20W TO BE AT 940' FNL, 904' FEL. BOTTOM HOLE AT 1159' FNL & 460' FWL.
- HINER 36NB-21W TO BE AT 966' FNL, 903' FEL. BOTTOM HOLE AT 1489' FNL & 460' FWL.
- HINER 36C-22W TO BE AT 992' FNL, 902' FEL. BOTTOM HOLE AT 1818' FNL & 460' FWL.
- HINER 36NB-23W TO BE AT 1018' FNL, 902' FEL. BOTTOM HOLE AT 2147' FNL & 460' FWL.
- HINER 36C-24W TO BE AT 1044' FNL, 901' FEL. BOTTOM HOLE AT 2677' FNL & 460' FWL.

PREPARED BY:

**PFS**   
Petroleum Field Services, LLC  
7535 Hilltop Circle  
Denver, CO 80229

EXTRACTION OIL & GAS

FIELD DATE: 01-22-14	PAD NAME: HINER 36 PAD
DRAWING DATE: 01-29-14	SURFACE LOCATION: NE 1/4 NE 1/4, SEC. 36, T6N, R66W, 6TH P.M.
BY: KAD	CHECKED: CLM
WELD COUNTY, COLORADO	

