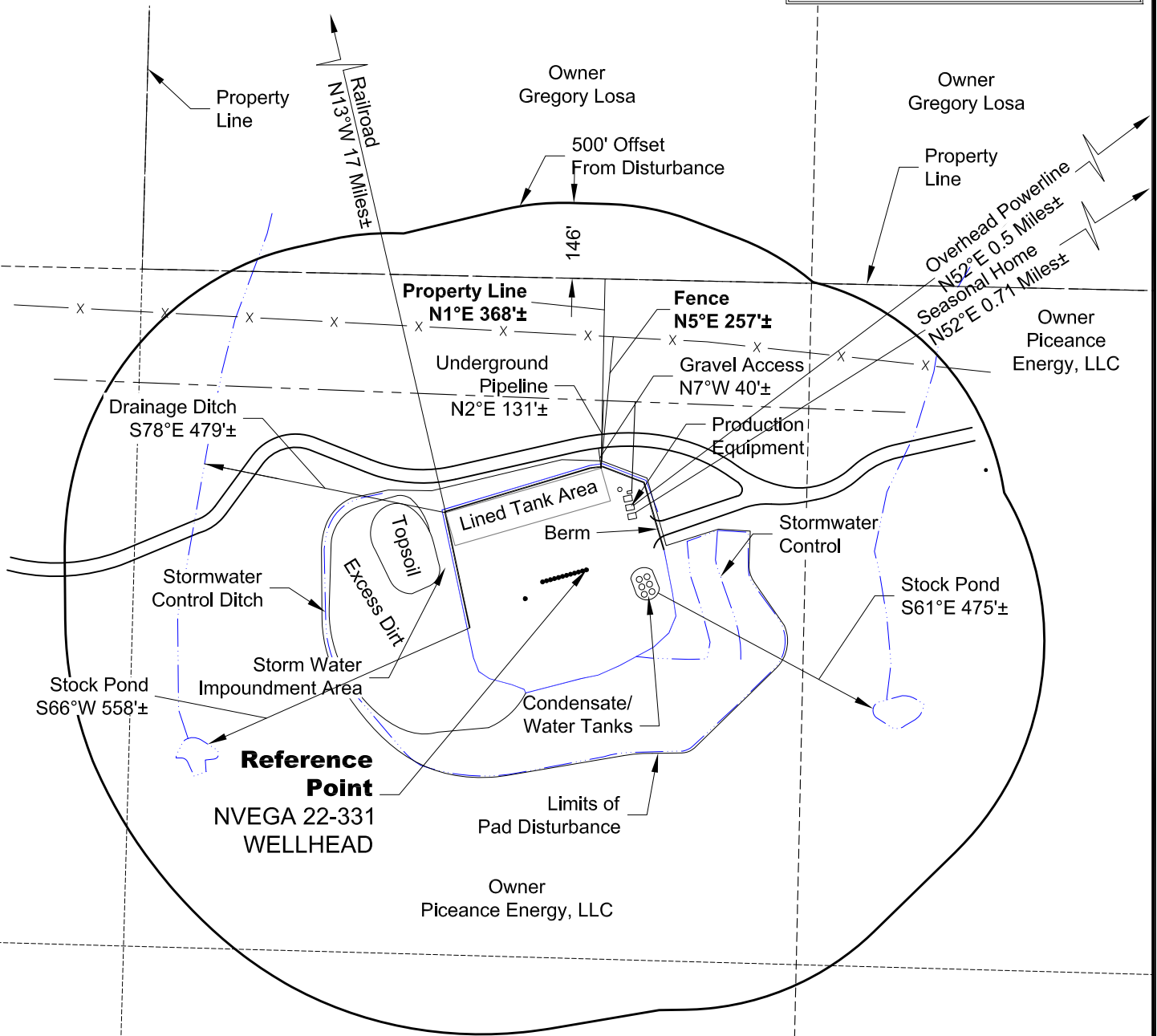


# LOCATION DRAWING NVEGA 2B PAD (Existing Well Pad)

VEGETATION:  
GRASSES  
SURFACE USE:  
AGRICULTURAL

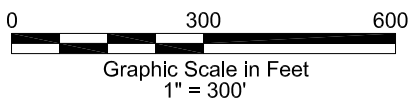
REFERENCE POINT	
LATITUDE:	39.260870
LONGITUDE:	-107.757460
FOOTAGE:	2079 FSL 2202 FWL
GROUND ELEVATION:	7497.0
PDOP:	3.2 DATE: Delta Plat
INSTRUMENT OPERATOR:	
Original Delta Survey Plat	



DWG: G:\GEO SURV\Laramie\11\_Laramie-Buzzard-Creek\Delta Wellplat\W 2B Delta Pad\W 2B F2A.dwg USER: E.J.G. DATE: Mar 21, 2014 3:47pm



North



LAND SURVEYING AND MAPPING  
LAFAYETTE - WINTER PARK  
Ph 303 666 0379 Fx 303 665 6320

PICEANCE ENERGY, LLC  
NVEGA 2B PAD

NE1/4 SW1/4 SECTION 22 T9S R93W  
6th PM MESA COUNTY COLORADO

3/21/14