

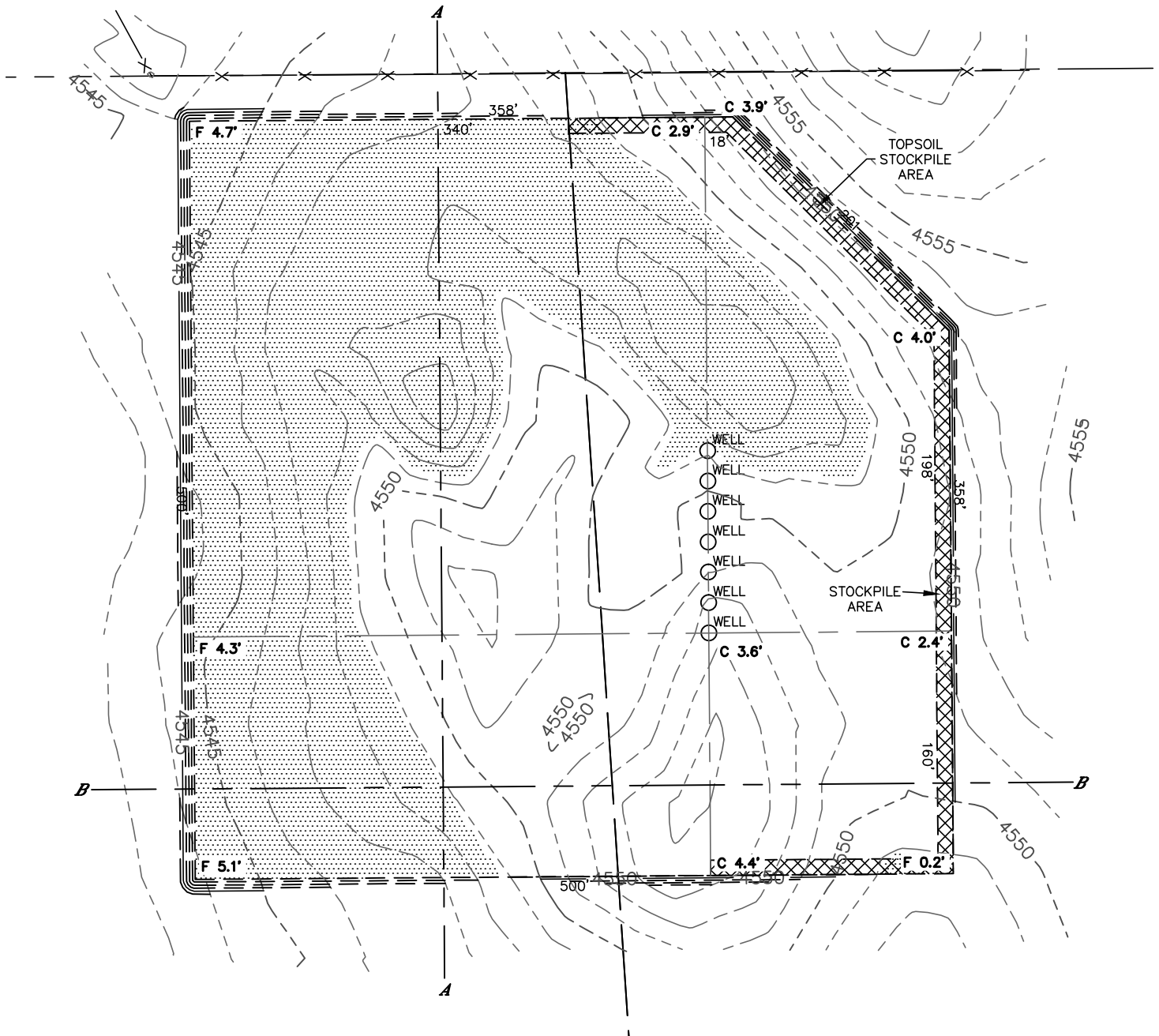


Lat40°, Inc. 1635 Foxtrail Drive, Suite 325 Loveland, CO 970-776-3321

CUT & FILL DIAGRAM

STATE SEVENTY HOLES F-4 PAD

SECTION: 4
TOWNSHIP: 4N
RANGE: 62W



OPERATOR: BONANZA CREEK ENERGY, INC.

LOCATION: 370' FNL, 1382' FWL

EXISTING ELEV= 4552.5'

PROPOSED ELEV= 4548.9'

DISTURBANCE= 5.8 ACRES

ESTIMATED EARTHWORK:

TOPSOIL= 9,302 CY

CUT= 8,850 CY

FILL= 8,841 CY

STOCKPILE:

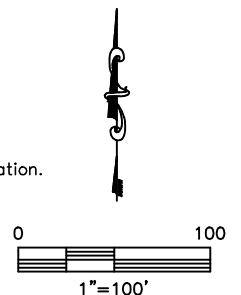
EXCESS= 9 CY

NOTE:

- 1) Ground elevations are based on an observed GPS elevation (NAVD 1988 DATUM).
- 2) No allowance has been made for soil expansion or compaction.
- 3) Proposed elevation does not account for top soil removal.
- 4) Top soil volume assumes 12" depth across entire location.
- 5) Fill slopes 2:1
- 6) Cut slopes 1.5:1

LEGEND

EX. CONTOUR	---
PRO. CONTOUR	- - -
FILL AREA	



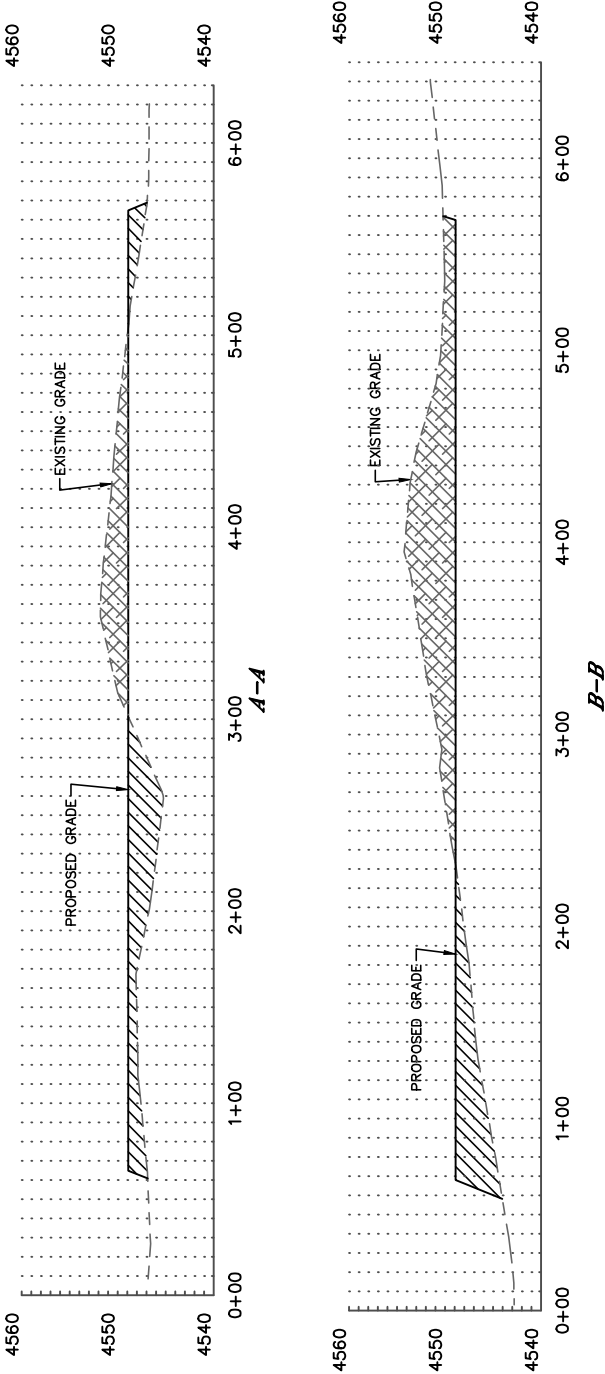
DATE: rev3/24/2014
PROJECT#: 2012179



CROSS SECTION DIAGRAM

STATE SEVENTY HOLES F-4 PAD

SECTION: 4
TOWNSHIP: 4N
RANGE: 62W



HORIZONTAL SCALE: 1"=100', VERTICAL SCALE: 1"=20'