

WELL LOCATION PLAT
T4S, R65W, 6th P.M.

ConocoPhillips Company

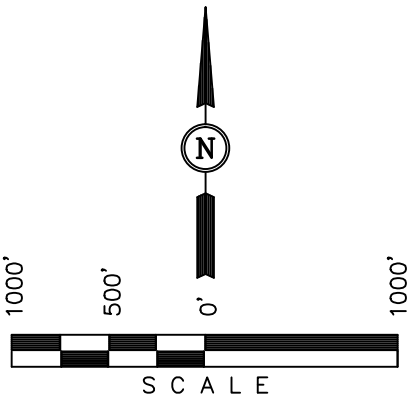
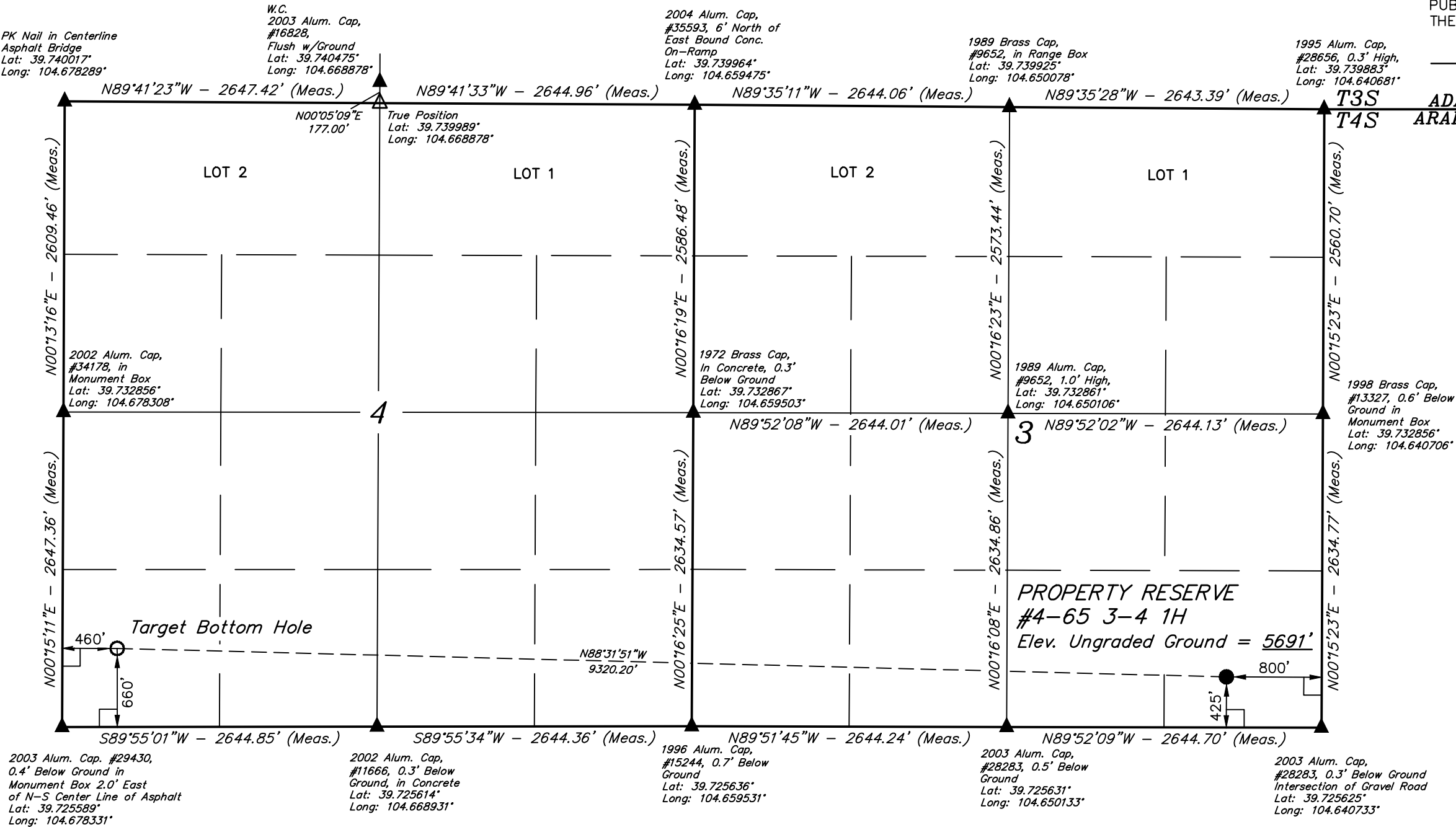
Well location, PROPERTY RESERVE #4-65 3-4 1H,
located as shown in the SE 1/4 SE 1/4 of
Section 3, T4S, R65W, 6th P.M., Arapahoe County,
Colorado.

BASIS OF ELEVATION

BENCHMARK 374 LOCATED ON THE SECTION LINE BETWEEN
SECTIONS 12 & 13, T5S, R64W, 6th. P.M., TAKEN FROM 1988
PUBLISHED DATUM BY THE UNITED STATES DEPARTMENT OF
THE INTERIOR, GEOLOGICAL SURVEY AS BEING 6054.61 FEET.

BASIS OF BEARINGS

BASIS OF BEARINGS IS A G.P.S. OBSERVATION.



CERTIFICATE
THIS IS TO CERTIFY THAT THE ABOVE PLAT WAS PREPARED FROM
FIELD NOTES OF ACTUAL SURVEYS MADE BY ME OR UNDER MY
SUPERVISION AND THAT THE SAME ARE TRUE AND CORRECT TO THE
BEST OF MY KNOWLEDGE AND BELIEF.
REGISTERED LAND SURVEYOR
REGISTRATION NO. 28285
STATE OF COLORADO
4-21-13

- LEGEND:
- └─┘ = 90° SYMBOL
 - = PROPOSED WELL HEAD.
 - ▲ = SECTION CORNERS LOCATED.
 - △ = SECTION CORNERS RE-ESTABLISHED. (Not Set on Ground.)

PDOP = 1.6

NAD 83 (TARGET BOTTOM HOLE)	NAD 83 (SURFACE LOCATION)
LATITUDE = 39°43'38.66" (39.727406)	LATITUDE = 39°43'36.46" (39.726794)
LONGITUDE = 104°40'36.08" (104.676689)	LONGITUDE = 104°38'36.86" (104.643572)
NAD 27 (TARGET BOTTOM HOLE)	NAD 27 (SURFACE LOCATION)
LATITUDE = 39°43'38.70" (39.727417)	LATITUDE = 39°43'36.50" (39.726806)
LONGITUDE = 104°40'34.19" (104.676164)	LONGITUDE = 104°38'34.98" (104.643050)

UINTAH ENGINEERING & LAND SURVEYING 85 SOUTH 200 EAST - VERNAL, UTAH 84078 (435) 789-1017		
SCALE 1" = 1000'	DATE SURVEYED: 10-31-13	DATE DRAWN: 11-18-13
PARTY DALLAS NIELSEN G.W. J.W.	REFERENCES G.L.O. PLAT	
WEATHER COOL	FILE ConocoPhillips Company	

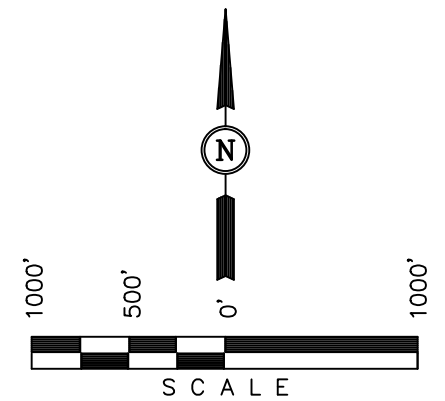
ConocoPhillips Company

Well location, PROPERTY RESERVE #4-65 3-4 1H,
located as shown in the SE 1/4 SE 1/4 of
Section 3, T4S, R65W, 6th P.M., Arapahoe County,
Colorado.

BASIS OF ELEVATION

BENCHMARK 374 LOCATED ON THE SECTION LINE BETWEEN
SECTIONS 12 & 13, T5S, R64W, 6th. P.M., TAKEN FROM 1988
PUBLISHED DATUM BY THE UNITED STATES DEPARTMENT OF
THE INTERIOR, GEOLOGICAL SURVEY AS BEING 6054.61 FEET.

BASIS OF BEARINGS IS A G.P.S. OBSERVATION.



CERTIFICATE

AT THE ABOVE PLAT WAS PREPARED FROM
L SURVEYS MADE BY ME OR UNDER MY
THE SAME ARE TRUE AND CORRECT TO THE
E AND BELIEF.

28285

REGISTERED LAND SURVEYOR
REGISTRATION NO. 28285
STATE OF COLORADO

21-13

LEGEND:

└ = 90° SYMBOL

● = PROPOSED WELL HEAD.

▲ = SECTION CORNERS LOCATED.

△ = SECTION CORNERS RE-ESTABLISHED. (Not Set on Ground.)

<p align="center">UINTAH ENGINEERING & LAND SURVEYING 85 SOUTH 200 EAST - VERNAL, UTAH 84078 (435) 789-1017</p>		
<p>SCALE 1" = 1000'</p>	<p>DATE SURVEYED: 10-31-13</p>	<p>DATE DRAWN: 11-18-13</p>
<p>PARTY DALLAS NIELSEN G.W. J.W.</p>	<p>REFERENCES G.L.O. PLAT</p>	
<p>WEATHER COOL</p>	<p>FILE ConocoPhillips Company</p>	