



**Weatherford<sup>®</sup>**

## **Drilling Services**

---

## **Proposal**

---

### **BERRY PETROLEUM COMPANY**

BERRY 1-32D

GARFIELD COUNTY, CO

WELL FILE:PLAN 1

DECEMBER 11, 2007

---

**Weatherford International Ltd.**

2690 Oil Drive

Casper, Wyoming 82604

+1.307.265.1413 Main

+1.307.235.3958 Fax

[www.weatherford.com](http://www.weatherford.com)



**Berry Petroleum Company**

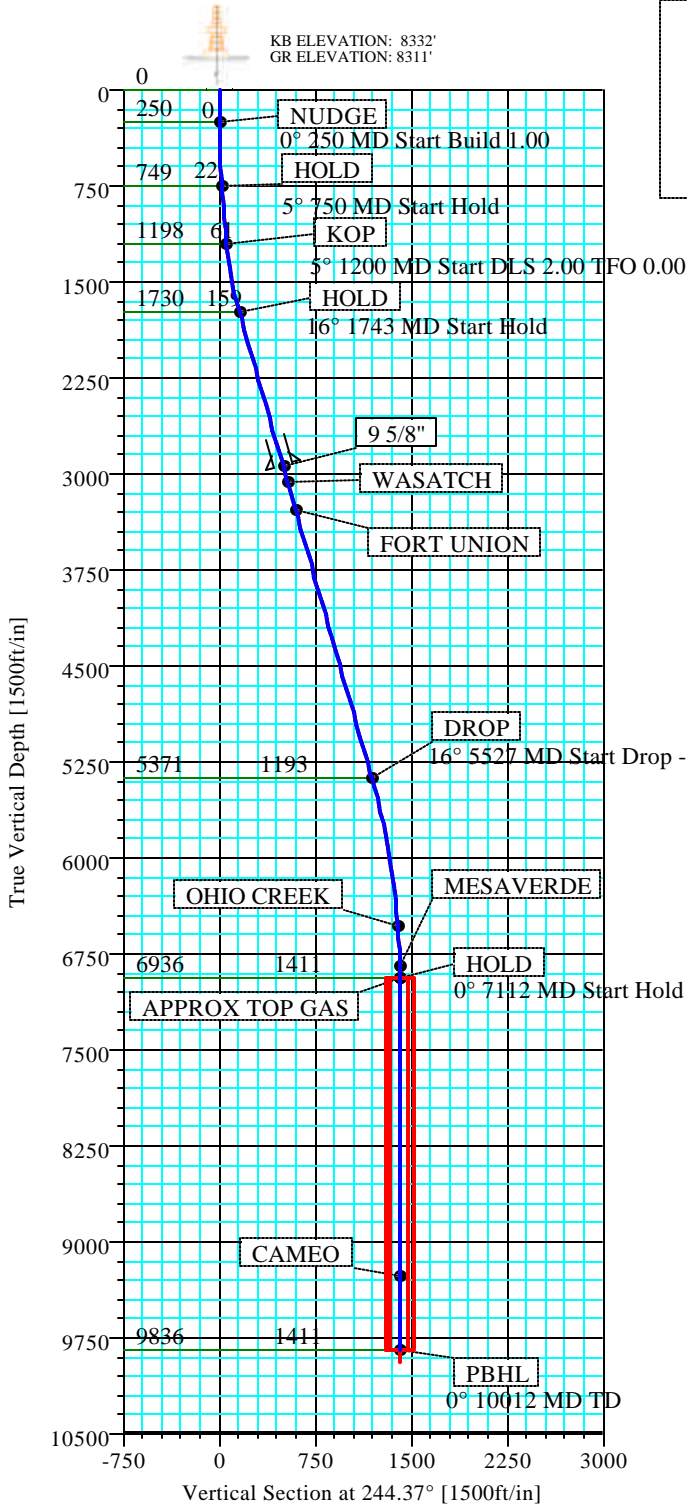
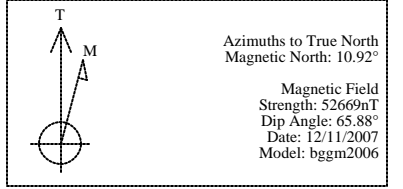
BERRY 1-32D  
 3074' FNL, 1913' FWL  
 SECTION 1 T6S R96W  
 GARFIELD COUNTY, CO

SECTION DETAILS										
Sec	MD	Inc	Azi	TVD	+N/-S	+E/-W	DLeg	TFace	VSec	Target
1	0.00	0.00	244.37	0.00	0.00	0.00	0.00	0.00	0.00	
2	250.00	0.00	244.37	250.00	0.00	0.00	0.00	244.37	0.00	
3	750.00	5.00	244.37	749.37	-9.43	-19.66	1.00	244.37	21.80	
4	1200.00	5.00	244.37	1197.65	-26.39	-55.02	0.00	0.00	61.02	
5	1742.52	15.85	244.37	1730.42	-68.79	-143.40	2.00	0.00	159.05	
6	5527.10	15.85	244.37	5371.10	-515.83	-1075.40	0.00	0.00	1192.72	
7	7112.14	0.00	244.37	6936.00	-610.05	-1271.82	1.00	180.00	1410.56	
8	10012.14	0.00	244.37	9836.00	-610.05	-1271.82	0.00	244.37	1410.56	PBHL 1-32D

WELL DETAILS							
Name	+N/-S	+E/-W	Northing	Easting	Latitude	Longitude	Slot
BERRY 1-32D	-100.07	-112.04	1638465.75	2246912.52	39°33'21.482N	108°10'16.689W	N/A

TARGET DETAILS							
Name	TVD	+N/-S	+E/-W	Northing	Easting	Shape	
PBHL 1-32D	9836.00	-610.05	-1271.82	1637893.36	2245623.31	Rectangle (100x200)	

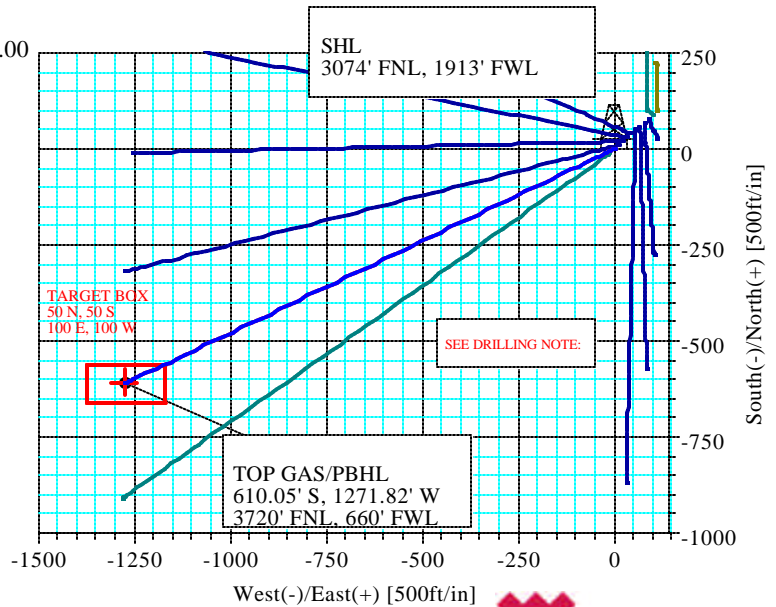
FORMATION TOP DETAILS			
No.	TVDPath	MDPath	Formation
1	3066.00	3130.89	WASATCH
2	3280.00	3353.35	FORT UNION
3	6536.00	6711.81	OHIO CREEK
4	6836.00	7012.13	MESAVERDE
5	6936.00	7112.14	APPROX TOP GAS
6	9261.00	9437.14	CAMEO
7	9736.00	9912.14	PBHL



TOTAL CORRECTION TO TRUE NORTH 10.92°

FIELD DETAILS	
GARFIELD COUNTY (NAD 83) COLORADO	
Geodetic System: US State Plane Coordinate System 1983	
Ellipsoid: GRS 1980	
Zone: Colorado, Central Zone	
Magnetic Model: bggm2006	
System Datum: Mean Sea Level	
Local North: True North	

**-DRILLING NOTE-**  
 TO ACCOUNT FOR THE 240° DRIFT IN AZIMUTH, AIM FOR THE NE SIDE OF PBHL, AND BE IN THE TARGET WINDOW BY THE TOP GAS AND STAY WITHIN THE WINDOW TO TD. DO NOT GO OUTSIDE THE WINDOW.



# Weatherford International, Ltd.

## PLAN REPORT

<b>Company:</b> BERRY PETROLEUM COMPANY	<b>Date:</b> 12/11/2007	<b>Time:</b> 14:42:54	<b>Page:</b> 1
<b>Field:</b> GARFIELD COUNTY (NAD 83)	<b>Co-ordinate(NE) Reference:</b> Well: BERRY 1-32D, True North		
<b>Site:</b> BERRY 1-21D PAD	<b>Vertical (TVD) Reference:</b> KB 8332.0		
<b>Well:</b> BERRY 1-32D	<b>Section (VS) Reference:</b> Well (0.00N,0.00E,244.37Azi)		
<b>Wellpath:</b> 1	<b>Survey Calculation Method:</b> Minimum Curvature	<b>Db:</b> Sybase	

<b>Field:</b> GARFIELD COUNTY (NAD 83) COLORADO	
<b>Map System:</b> US State Plane Coordinate System 1983	<b>Map Zone:</b> Colorado, Central Zone
<b>Geo Datum:</b> GRS 1980	<b>Coordinate System:</b> Well Centre
<b>Sys Datum:</b> Mean Sea Level	<b>Geomagnetic Model:</b> bggm2006

<b>Site:</b> BERRY 1-21D PAD SECTION 1 T6S R97W 2971' FNL, 2022' FWL			
<b>Site Position:</b>	<b>Northing:</b> 1638562.48 ft	<b>Latitude:</b> 39 33 22.471 N	
<b>From:</b> Geographic	<b>Easting:</b> 2247027.45 ft	<b>Longitude:</b> 108 10 15.258 W	
<b>Position Uncertainty:</b> 0.00 ft		<b>North Reference:</b> True	
<b>Ground Level:</b> 8311.00 ft		<b>Grid Convergence:</b> -1.68 deg	

<b>Well:</b> BERRY 1-32D 3074' FNL, 1913' FWL		<b>Slot Name:</b>	
<b>Well Position:</b> +N/-S -100.07 ft	<b>Northing:</b> 1638465.75 ft	<b>Latitude:</b> 39 33 21.482 N	
+E/-W -112.04 ft	<b>Easting:</b> 2246912.52 ft	<b>Longitude:</b> 108 10 16.689 W	
<b>Position Uncertainty:</b> 0.00 ft			

<b>Wellpath:</b> 1		<b>Drilled From:</b> Surface
<b>Current Datum:</b> KB	<b>Height:</b> 8332.00 ft	<b>Tie-on Depth:</b> 0.00 ft
<b>Magnetic Data:</b> 12/11/2007		<b>Above System Datum:</b> Mean Sea Level
<b>Field Strength:</b> 52669 nT		<b>Declination:</b> 10.92 deg
<b>Vertical Section:</b> Depth From (TVD)	+N/-S	<b>Mag Dip Angle:</b> 65.88 deg
ft	ft	+E/-W
		ft
0.00	0.00	0.00
		244.37
		deg

<b>Plan:</b> Plan #1	<b>Date Composed:</b> 5/24/2007
<b>Principal:</b> Yes	<b>Version:</b> 1
	<b>Tied-to:</b> From Surface

**Plan Section Information**

MD ft	Incl deg	Azim deg	TVD ft	+N/-S ft	+E/-W ft	DLS deg/100ft	Build deg/100ft	Turn deg/100ft	TFO deg	Target
0.00	0.00	244.37	0.00	0.00	0.00	0.00	0.00	0.00	0.00	
250.00	0.00	244.37	250.00	0.00	0.00	0.00	0.00	0.00	244.37	
750.00	5.00	244.37	749.37	-9.43	-19.66	1.00	1.00	0.00	244.37	
1200.00	5.00	244.37	1197.65	-26.39	-55.02	0.00	0.00	0.00	0.00	
1742.52	15.85	244.37	1730.42	-68.79	-143.40	2.00	2.00	0.00	0.00	
5527.10	15.85	244.37	5371.10	-515.83	-1075.40	0.00	0.00	0.00	0.00	
7112.14	0.00	244.37	6936.00	-610.05	-1271.82	1.00	-1.00	0.00	180.00	
10012.14	0.00	244.37	9836.00	-610.05	-1271.82	0.00	0.00	0.00	244.37	PBHL 1-32D

**Survey**

MD ft	Incl deg	Azim deg	TVD ft	N/S ft	E/W ft	VS ft	DLS deg/100ft	Build deg/100ft	Turn deg/100ft	Comment
250.00	0.00	244.37	250.00	0.00	0.00	0.00	0.00	0.00	0.00	NUDGE
350.00	1.00	244.37	349.99	-0.38	-0.79	0.87	1.00	1.00	0.00	
450.00	2.00	244.37	449.96	-1.51	-3.15	3.49	1.00	1.00	0.00	
550.00	3.00	244.37	549.86	-3.40	-7.08	7.85	1.00	1.00	0.00	
650.00	4.00	244.37	649.68	-6.04	-12.58	13.96	1.00	1.00	0.00	
750.00	5.00	244.37	749.37	-9.43	-19.66	21.80	1.00	1.00	0.00	HOLD
850.00	5.00	244.37	848.99	-13.20	-27.52	30.52	0.00	0.00	0.00	
950.00	5.00	244.37	948.60	-16.97	-35.37	39.23	0.00	0.00	0.00	
1050.00	5.00	244.37	1048.22	-20.74	-43.23	47.95	0.00	0.00	0.00	
1150.00	5.00	244.37	1147.84	-24.51	-51.09	56.67	0.00	0.00	0.00	
1200.00	5.00	244.37	1197.65	-26.39	-55.02	61.02	0.00	0.00	0.00	KOP
1250.00	6.00	244.37	1247.42	-28.46	-59.34	65.82	2.00	2.00	0.00	
1350.00	8.00	244.37	1346.67	-33.74	-70.33	78.00	2.00	2.00	0.00	
1450.00	10.00	244.37	1445.44	-40.50	-84.43	93.64	2.00	2.00	0.00	

# Weatherford International, Ltd.

## PLAN REPORT

<b>Company:</b> BERRY PETROLEUM COMPANY	<b>Date:</b> 12/11/2007	<b>Time:</b> 14:42:54	<b>Page:</b> 2
<b>Field:</b> GARFIELD COUNTY (NAD 83)	<b>Co-ordinate(NE) Reference:</b>	Well: BERRY 1-32D, True North	
<b>Site:</b> BERRY 1-21D PAD	<b>Vertical (TVD) Reference:</b>	KB 8332.0	
<b>Well:</b> BERRY 1-32D	<b>Section (VS) Reference:</b>	Well (0.00N,0.00E,244.37Azi)	
<b>Wellpath:</b> 1	<b>Survey Calculation Method:</b>	Minimum Curvature	<b>Db:</b> Sybase

**Survey**

MD ft	Incl deg	Azim deg	TVD ft	N/S ft	E/W ft	VS ft	DLS deg/100ft	Build deg/100ft	Turn deg/100ft	Comment
1550.00	12.00	244.37	1543.59	-48.75	-101.64	112.72	2.00	2.00	0.00	
1650.00	14.00	244.37	1641.03	-58.48	-121.92	135.22	2.00	2.00	0.00	
1742.52	15.85	244.37	1730.42	-68.79	-143.40	159.05	2.00	2.00	0.00	HOLD
1750.00	15.85	244.37	1737.62	-69.67	-145.24	161.09	0.00	0.00	0.00	
1850.00	15.85	244.37	1833.81	-81.48	-169.87	188.40	0.00	0.00	0.00	
1950.00	15.85	244.37	1930.01	-93.29	-194.50	215.71	0.00	0.00	0.00	
2050.00	15.85	244.37	2026.21	-105.11	-219.12	243.03	0.00	0.00	0.00	
2150.00	15.85	244.37	2122.41	-116.92	-243.75	270.34	0.00	0.00	0.00	
2250.00	15.85	244.37	2218.60	-128.73	-268.38	297.65	0.00	0.00	0.00	
2350.00	15.85	244.37	2314.80	-140.54	-293.00	324.97	0.00	0.00	0.00	
2450.00	15.85	244.37	2411.00	-152.36	-317.63	352.28	0.00	0.00	0.00	
2550.00	15.85	244.37	2507.20	-164.17	-342.25	379.59	0.00	0.00	0.00	
2650.00	15.85	244.37	2603.40	-175.98	-366.88	406.90	0.00	0.00	0.00	
2750.00	15.85	244.37	2699.59	-187.79	-391.51	434.22	0.00	0.00	0.00	
2850.00	15.85	244.37	2795.79	-199.60	-416.13	461.53	0.00	0.00	0.00	
2950.00	15.85	244.37	2891.99	-211.42	-440.76	488.84	0.00	0.00	0.00	
3000.00	15.85	244.37	2940.09	-217.32	-453.07	502.50	0.00	0.00	0.00	9 5/8"
3050.00	15.85	244.37	2988.19	-223.23	-465.39	516.15	0.00	0.00	0.00	
3130.89	15.85	244.37	3066.00	-232.78	-485.31	538.25	0.00	0.00	0.00	WASATCH
3150.00	15.85	244.37	3084.39	-235.04	-490.01	543.47	0.00	0.00	0.00	
3250.00	15.85	244.37	3180.58	-246.85	-514.64	570.78	0.00	0.00	0.00	
3350.00	15.85	244.37	3276.78	-258.67	-539.26	598.09	0.00	0.00	0.00	
3353.35	15.85	244.37	3280.00	-259.06	-540.09	599.01	0.00	0.00	0.00	FORT UNION
3450.00	15.85	244.37	3372.98	-270.48	-563.89	625.40	0.00	0.00	0.00	
3550.00	15.85	244.37	3469.18	-282.29	-588.52	652.72	0.00	0.00	0.00	
3650.00	15.85	244.37	3565.37	-294.10	-613.14	680.03	0.00	0.00	0.00	
3750.00	15.85	244.37	3661.57	-305.92	-637.77	707.34	0.00	0.00	0.00	
3850.00	15.85	244.37	3757.77	-317.73	-662.40	734.66	0.00	0.00	0.00	
3950.00	15.85	244.37	3853.97	-329.54	-687.02	761.97	0.00	0.00	0.00	
4050.00	15.85	244.37	3950.17	-341.35	-711.65	789.28	0.00	0.00	0.00	
4150.00	15.85	244.37	4046.36	-353.16	-736.27	816.59	0.00	0.00	0.00	
4250.00	15.85	244.37	4142.56	-364.98	-760.90	843.91	0.00	0.00	0.00	
4350.00	15.85	244.37	4238.76	-376.79	-785.53	871.22	0.00	0.00	0.00	
4450.00	15.85	244.37	4334.96	-388.60	-810.15	898.53	0.00	0.00	0.00	
4550.00	15.85	244.37	4431.15	-400.41	-834.78	925.84	0.00	0.00	0.00	
4650.00	15.85	244.37	4527.35	-412.23	-859.41	953.16	0.00	0.00	0.00	
4750.00	15.85	244.37	4623.55	-424.04	-884.03	980.47	0.00	0.00	0.00	
4850.00	15.85	244.37	4719.75	-435.85	-908.66	1007.78	0.00	0.00	0.00	
4950.00	15.85	244.37	4815.95	-447.66	-933.28	1035.09	0.00	0.00	0.00	
5050.00	15.85	244.37	4912.14	-459.47	-957.91	1062.41	0.00	0.00	0.00	
5150.00	15.85	244.37	5008.34	-471.29	-982.54	1089.72	0.00	0.00	0.00	
5250.00	15.85	244.37	5104.54	-483.10	-1007.16	1117.03	0.00	0.00	0.00	
5350.00	15.85	244.37	5200.74	-494.91	-1031.79	1144.35	0.00	0.00	0.00	
5450.00	15.85	244.37	5296.93	-506.72	-1056.42	1171.66	0.00	0.00	0.00	
5527.10	15.85	244.37	5371.10	-515.83	-1075.40	1192.72	0.00	0.00	0.00	DROP
5550.00	15.62	244.37	5393.14	-518.52	-1081.00	1198.93	1.00	-1.00	0.00	
5650.00	14.62	244.37	5489.68	-529.80	-1104.52	1225.01	1.00	-1.00	0.00	
5750.00	13.62	244.37	5586.66	-540.35	-1126.52	1249.41	1.00	-1.00	0.00	
5850.00	12.62	244.37	5684.05	-550.17	-1146.99	1272.11	1.00	-1.00	0.00	
5950.00	11.62	244.37	5781.82	-559.25	-1165.92	1293.11	1.00	-1.00	0.00	
6050.00	10.62	244.37	5879.94	-567.59	-1183.31	1312.40	1.00	-1.00	0.00	
6150.00	9.62	244.37	5978.38	-575.19	-1199.16	1329.97	1.00	-1.00	0.00	

# Weatherford International, Ltd.

## PLAN REPORT

<b>Company:</b> BERRY PETROLEUM COMPANY	<b>Date:</b> 12/11/2007	<b>Time:</b> 14:42:54	<b>Page:</b> 3
<b>Field:</b> GARFIELD COUNTY (NAD 83)	<b>Co-ordinate(NE) Reference:</b> Well: BERRY 1-32D, True North		
<b>Site:</b> BERRY 1-21D PAD	<b>Vertical (TVD) Reference:</b> KB 8332.0		
<b>Well:</b> BERRY 1-32D	<b>Section (VS) Reference:</b> Well (0.00N,0.00E,244.37Azi)		
<b>Wellpath:</b> 1	<b>Survey Calculation Method:</b> Minimum Curvature	<b>Db:</b> Sybase	

### Survey

MD ft	Incl deg	Azim deg	TVD ft	N/S ft	E/W ft	VS ft	DLS deg/100ft	Build deg/100ft	Turn deg/100ft	Comment
6250.00	8.62	244.37	6077.11	-582.05	-1213.45	1345.82	1.00	-1.00	0.00	
6350.00	7.62	244.37	6176.11	-588.16	-1226.19	1359.95	1.00	-1.00	0.00	
6450.00	6.62	244.37	6275.34	-593.52	-1237.37	1372.35	1.00	-1.00	0.00	
6550.00	5.62	244.37	6374.76	-598.13	-1246.98	1383.01	1.00	-1.00	0.00	
6650.00	4.62	244.37	6474.36	-601.99	-1255.03	1391.94	1.00	-1.00	0.00	
6711.81	4.00	244.37	6536.00	-604.00	-1259.22	1396.59	1.00	-1.00	0.00	OHIO CREEK
6750.00	3.62	244.37	6574.10	-605.10	-1261.51	1399.12	1.00	-1.00	0.00	
6850.00	2.62	244.37	6673.95	-607.45	-1266.42	1404.57	1.00	-1.00	0.00	
6950.00	1.62	244.37	6773.88	-609.06	-1269.76	1408.27	1.00	-1.00	0.00	
7012.13	1.00	244.37	6836.00	-609.67	-1271.04	1409.69	1.00	-1.00	0.00	MESAVERDE
7050.00	0.62	244.37	6873.86	-609.90	-1271.52	1410.23	1.00	-1.00	0.00	
7112.14	0.00	244.37	6936.00	-610.05	-1271.82	1410.56	1.00	-1.00	0.00	APPROX TOP GAS
7150.00	0.00	244.37	6973.86	-610.05	-1271.82	1410.56	0.00	0.00	0.00	
7250.00	0.00	244.37	7073.86	-610.05	-1271.82	1410.56	0.00	0.00	0.00	
7350.00	0.00	244.37	7173.86	-610.05	-1271.82	1410.56	0.00	0.00	0.00	
7450.00	0.00	244.37	7273.86	-610.05	-1271.82	1410.56	0.00	0.00	0.00	
7550.00	0.00	244.37	7373.86	-610.05	-1271.82	1410.56	0.00	0.00	0.00	
7650.00	0.00	244.37	7473.86	-610.05	-1271.82	1410.56	0.00	0.00	0.00	
7750.00	0.00	244.37	7573.86	-610.05	-1271.82	1410.56	0.00	0.00	0.00	
7850.00	0.00	244.37	7673.86	-610.05	-1271.82	1410.56	0.00	0.00	0.00	
7950.00	0.00	244.37	7773.86	-610.05	-1271.82	1410.56	0.00	0.00	0.00	
8050.00	0.00	244.37	7873.86	-610.05	-1271.82	1410.56	0.00	0.00	0.00	
8150.00	0.00	244.37	7973.86	-610.05	-1271.82	1410.56	0.00	0.00	0.00	
8250.00	0.00	244.37	8073.86	-610.05	-1271.82	1410.56	0.00	0.00	0.00	
8350.00	0.00	244.37	8173.86	-610.05	-1271.82	1410.56	0.00	0.00	0.00	
8450.00	0.00	244.37	8273.86	-610.05	-1271.82	1410.56	0.00	0.00	0.00	
8550.00	0.00	244.37	8373.86	-610.05	-1271.82	1410.56	0.00	0.00	0.00	
8650.00	0.00	244.37	8473.86	-610.05	-1271.82	1410.56	0.00	0.00	0.00	
8750.00	0.00	244.37	8573.86	-610.05	-1271.82	1410.56	0.00	0.00	0.00	
8850.00	0.00	244.37	8673.86	-610.05	-1271.82	1410.56	0.00	0.00	0.00	
8950.00	0.00	244.37	8773.86	-610.05	-1271.82	1410.56	0.00	0.00	0.00	
9050.00	0.00	244.37	8873.86	-610.05	-1271.82	1410.56	0.00	0.00	0.00	
9150.00	0.00	244.37	8973.86	-610.05	-1271.82	1410.56	0.00	0.00	0.00	
9250.00	0.00	244.37	9073.86	-610.05	-1271.82	1410.56	0.00	0.00	0.00	
9350.00	0.00	244.37	9173.86	-610.05	-1271.82	1410.56	0.00	0.00	0.00	
9437.14	0.00	244.37	9261.00	-610.05	-1271.82	1410.56	0.00	0.00	0.00	CAMEO
9450.00	0.00	244.37	9273.86	-610.05	-1271.82	1410.56	0.00	0.00	0.00	
9550.00	0.00	244.37	9373.86	-610.05	-1271.82	1410.56	0.00	0.00	0.00	
9650.00	0.00	244.37	9473.86	-610.05	-1271.82	1410.56	0.00	0.00	0.00	
9750.00	0.00	244.37	9573.86	-610.05	-1271.82	1410.56	0.00	0.00	0.00	
9850.00	0.00	244.37	9673.86	-610.05	-1271.82	1410.56	0.00	0.00	0.00	
9912.14	0.00	244.37	9736.00	-610.05	-1271.82	1410.56	0.00	0.00	0.00	PBHL
9950.00	0.00	244.37	9773.86	-610.05	-1271.82	1410.56	0.00	0.00	0.00	
10012.14	0.00	244.37	9836.00	-610.05	-1271.82	1410.56	0.00	0.00	0.00	PBHL 1-32D

### Annotation

MD ft	TVD ft	
250.00	250.00	NUDGE
750.00	749.37	HOLD
1200.00	1197.65	KOP
1742.52	1730.42	HOLD
5527.10	5371.10	DROP

# Weatherford International, Ltd.

## PLAN REPORT

<b>Company:</b> BERRY PETROLEUM COMPANY	<b>Date:</b> 12/11/2007	<b>Time:</b> 14:42:54	<b>Page:</b> 4
<b>Field:</b> GARFIELD COUNTY (NAD 83)	<b>Co-ordinate(NE) Reference:</b> Well: BERRY 1-32D, True North		
<b>Site:</b> BERRY 1-21D PAD	<b>Vertical (TVD) Reference:</b> KB 8332.0		
<b>Well:</b> BERRY 1-32D	<b>Section (VS) Reference:</b> Well (0.00N,0.00E,244.37Azi)		
<b>Wellpath:</b> 1	<b>Survey Calculation Method:</b> Minimum Curvature		<b>Db:</b> Sybase

### Annotation

MD ft	TVD ft	
7112.14	6936.00	HOLD
10012.14	9836.00	PBHL

### Targets

Name	Description Dip.	Dir.	TVD ft	+N/-S ft	+E/-W ft	Map Northing ft	Map Easting ft	<--- Latitude ---> Deg Min Sec	<--- Longitude ---> Deg Min Sec
PBHL 1-32D			9836.00	-610.05	-1271.82	1637893.36	2245623.31	39 33 15.452 N	108 10 32.926 W
	-Rectangle (100x200)								
	-Plan hit target								

# Weatherford International, Ltd.

## Anticollision Report

<b>Company:</b>	BERRY PETROLEUM COMPANY	<b>Date:</b> 5/25/2007	<b>Time:</b> 11:54:03	<b>Page:</b> 1
<b>Field:</b>	GARFIELD COUNTY (NAD 83)	<b>Co-ordinate(NE) Reference:</b>	Well: BERRY 1-32D, True North	
<b>Reference Site:</b>	BERRY 1-21D PAD	<b>Vertical (TVD) Reference:</b>	KB 8332.0	
<b>Reference Well:</b>	BERRY 1-32D			
<b>Reference Wellpath:</b>	1			<b>Db:</b> Sybase

<b>NO GLOBAL SCAN: Using user defined selection &amp; scan criteria</b>		<b>Reference:</b>	Plan: Plan #1
<b>Interpolation Method:</b> MD	<b>Interval:</b> 100.00 ft	<b>Error Model:</b>	ISCWSA Ellipse
<b>Depth Range:</b> 0.00 to 10667.13 ft		<b>Scan Method:</b>	Closest Approach 3D
<b>Maximum Radius:</b> 10000.00 ft		<b>Error Surface:</b>	Ellipse

<b>Plan:</b> Plan #1	<b>Date Composed:</b> 5/24/2007
<b>Principal:</b> Yes	<b>Version:</b> 1
	<b>Tied-to:</b> From Surface

**Summary**

<----- Offset Wellpath ----->	Reference	Offset	Ctr-Ctr	Edge	Separation	Warning	
Site	Well	Wellpath	MD	MD	Distance	Distance	Factor
			ft	ft	ft	ft	
BERRY 1-21D PAD	BERRY 1-31D	1 V0 Plan: Plan #1 V1	900.00	898.03	19.31	15.47	5.03
BERRY 1-21D PAD	BERRY 1-33D	1 V0 Plan: Plan #1 V1	1200.00	1201.06	22.12	16.68	4.07

**Site:** BERRY 1-21D PAD  
**Well:** BERRY 1-31D  
**Wellpath:** 1 V0 Plan: Plan #1 V1

**Inter-Site Error:** 0.00 ft

Reference	Offset		Semi-Major Axis			Offset Location		Ctr-Ctr	Edge	Separation	Warning
	MD	TVD	Ref	Offset	TFO-HS	North	East				
ft	ft	ft	ft	ft	deg	ft	ft	ft	ft	ft	
0.00	0.00	0.00	0.00	0.00	226.62	-10.70	-11.33	15.58			No Data
100.00	100.00	100.00	100.00	0.09	226.62	-10.70	-11.33	15.58	15.41	87.76	
200.00	200.00	200.00	200.00	0.31	226.62	-10.70	-11.33	15.58	14.96	24.85	
300.00	300.00	299.87	299.87	0.54	342.11	-10.83	-11.50	15.59	14.51	14.48	
400.00	399.98	399.60	399.58	0.76	341.06	-11.83	-12.92	15.66	14.13	10.25	
500.00	499.92	499.33	499.25	1.00	338.99	-13.84	-15.75	15.80	13.82	7.99	
600.00	599.78	599.05	598.84	1.23	335.96	-16.85	-20.00	16.05	13.63	6.61	
700.00	699.54	698.77	698.31	1.48	332.08	-20.86	-25.66	16.46	13.57	5.70	
800.00	799.18	798.62	797.80	1.74	327.64	-25.76	-32.58	17.07	13.71	5.08	
900.00	898.79	898.03	896.67	2.01	325.71	-31.73	-41.01	19.31	15.47	5.03	
1000.00	998.41	997.19	994.87	2.28	327.71	-39.66	-52.20	24.73	20.42	5.74	
1100.00	1098.03	1095.86	1092.06	2.55	2.67	331.13	-49.49	-66.09	33.40	28.62	6.99
1200.00	1197.65	1193.83	1187.92	2.83	3.07	334.40	-61.17	-82.57	45.42	40.17	8.66
1300.00	1297.10	1291.14	1282.40	3.12	3.51	336.53	-74.63	-101.57	59.21	53.49	10.35
1400.00	1396.12	1388.02	1375.61	3.44	4.00	337.43	-89.87	-123.09	73.13	66.91	11.77
1500.00	1494.60	1487.25	1470.64	3.80	4.54	337.43	-106.39	-146.41	85.45	78.69	12.65
1600.00	1592.41	1586.82	1565.99	4.21	5.10	336.62	-122.96	-169.81	94.57	87.24	12.90
1700.00	1689.43	1686.60	1661.54	4.67	5.67	335.12	-139.57	-193.26	100.55	92.60	12.65
1800.00	1785.71	1786.47	1757.18	5.17	6.24	333.05	-156.20	-216.73	103.99	95.35	12.03
1900.00	1881.91	1886.35	1852.82	5.70	6.83	331.03	-172.82	-240.20	107.29	97.90	11.42
2000.00	1978.11	1986.22	1948.47	6.23	7.41	329.12	-189.45	-263.67	110.71	100.53	10.87
2100.00	2074.31	2086.10	2044.11	6.77	8.00	327.34	-206.07	-287.14	114.24	103.24	10.38
2200.00	2170.51	2185.97	2139.76	7.32	8.59	325.66	-222.70	-310.62	117.88	106.02	9.93
2300.00	2266.70	2285.85	2235.40	7.87	9.18	324.08	-239.33	-334.09	121.62	108.86	9.53
2400.00	2362.90	2385.72	2331.05	8.43	9.77	322.60	-255.95	-357.56	125.44	111.76	9.17
2500.00	2459.10	2485.60	2426.69	8.99	10.37	321.20	-272.58	-381.03	129.34	114.72	8.85
2600.00	2555.30	2585.48	2522.33	9.55	10.97	319.89	-289.20	-404.50	133.31	117.73	8.55
2700.00	2651.50	2685.35	2617.98	10.11	11.56	318.66	-305.83	-427.98	137.35	120.78	8.29
2800.00	2747.69	2785.23	2713.62	10.68	12.16	317.49	-322.46	-451.45	141.45	123.87	8.05
2900.00	2843.89	2885.10	2809.27	11.25	12.76	316.39	-339.08	-474.92	145.60	127.01	7.83
3000.00	2940.09	2984.98	2904.91	11.82	13.36	315.36	-355.71	-498.39	149.80	130.18	7.63
3100.00	3036.29	3084.86	3000.56	12.39	13.96	314.38	-372.33	-521.86	154.05	133.39	7.45
3200.00	3132.48	3184.73	3096.20	12.96	14.56	313.45	-388.96	-545.33	158.35	136.63	7.29
3300.00	3228.68	3284.61	3191.84	13.53	15.16	312.57	-405.58	-568.81	162.68	139.90	7.14
3400.00	3324.88	3384.48	3287.49	14.10	15.76	311.74	-422.21	-592.28	167.05	143.19	7.00
3500.00	3421.08	3484.36	3383.13	14.68	16.36	310.95	-438.84	-615.75	171.45	146.52	6.88

# Weatherford International, Ltd.

## Anticollision Report

<b>Company:</b>	BERRY PETROLEUM COMPANY	<b>Date:</b>	5/25/2007	<b>Time:</b>	11:54:03	<b>Page:</b>	2
<b>Field:</b>	GARFIELD COUNTY (NAD 83)	<b>Co-ordinate(NE) Reference:</b>	Well: BERRY 1-32D, True North				
<b>Reference Site:</b>	BERRY 1-21D PAD	<b>Vertical (TVD) Reference:</b>	KB 8332.0				
<b>Reference Well:</b>	BERRY 1-32D						
<b>Reference Wellpath:</b>	1	<b>Db:</b> Sybase					

**Site:** BERRY 1-21D PAD  
**Well:** BERRY 1-31D  
**Wellpath:** 1 V0 Plan: Plan #1 V1

**Inter-Site Error:** 0.00 ft

Reference		Offset		Semi-Major Axis			Offset Location		Ctr-Ctr Distance	Edge Distance	Separation Factor	Warning
MD	TVD	MD	TVD	Ref	Offset	TFO-HS	North	East				
ft	ft	ft	ft	ft	ft	deg	ft	ft	ft	ft		
3600.00	3517.28	3584.24	3478.78	15.25	16.96	310.20	-455.46	-639.22	175.88	149.87	6.76	
3700.00	3613.47	3684.11	3574.42	15.83	17.56	309.48	-472.09	-662.69	180.34	153.24	6.65	
3800.00	3709.67	3783.99	3670.07	16.40	18.17	308.81	-488.71	-686.17	184.83	156.63	6.55	
3900.00	3805.87	3883.86	3765.71	16.98	18.77	308.16	-505.34	-709.64	189.34	160.04	6.46	
4000.00	3902.07	3983.74	3861.35	17.55	19.37	307.54	-521.97	-733.11	193.88	163.47	6.38	
4100.00	3998.26	4083.61	3957.00	18.13	19.97	306.95	-538.59	-756.58	198.43	166.92	6.30	
4200.00	4094.46	4183.49	4052.64	18.71	20.58	306.39	-555.22	-780.05	203.01	170.39	6.22	
4300.00	4190.66	4283.37	4148.29	19.28	21.18	305.86	-571.84	-803.53	207.60	173.87	6.15	
4400.00	4286.86	4383.24	4243.93	19.86	21.78	305.34	-588.47	-827.00	212.22	177.36	6.09	
4500.00	4383.06	4483.12	4339.58	20.44	22.38	304.85	-605.10	-850.47	216.85	180.88	6.03	
4600.00	4479.25	4582.99	4435.22	21.01	22.99	304.38	-621.72	-873.94	221.49	184.40	5.97	
4700.00	4575.45	4682.87	4530.86	21.59	23.59	303.93	-638.35	-897.41	226.15	187.93	5.92	
4800.00	4671.65	4782.75	4626.51	22.17	24.19	303.49	-654.97	-920.89	230.82	191.48	5.87	
4900.00	4767.85	4882.62	4722.15	22.75	24.80	303.08	-671.60	-944.36	235.51	195.04	5.82	
5000.00	4864.04	4982.50	4817.80	23.33	25.40	302.68	-688.23	-967.83	240.20	198.61	5.78	
5100.00	4960.24	5082.37	4913.44	23.91	26.01	302.29	-704.85	-991.30	244.91	202.19	5.73	
5200.00	5056.44	5182.25	5009.09	24.48	26.61	301.92	-721.48	-1014.77	249.63	205.78	5.69	
5300.00	5152.64	5282.12	5104.73	25.06	27.21	301.57	-738.10	-1038.25	254.36	209.38	5.66	
5400.00	5248.84	5382.00	5200.37	25.64	27.82	301.22	-754.73	-1061.72	259.09	212.99	5.62	
5500.00	5345.03	5482.20	5296.33	26.22	28.41	300.89	-771.40	-1085.26	263.83	216.60	5.59	
5600.00	5441.36	5585.16	5395.24	26.74	28.87	300.44	-787.92	-1108.58	268.13	219.87	5.56	
5700.00	5538.12	5688.16	5494.69	27.14	29.29	300.01	-803.41	-1130.45	272.14	222.98	5.54	
5800.00	5635.30	5791.19	5594.63	27.53	29.70	299.61	-817.88	-1150.87	275.89	225.89	5.52	
5900.00	5732.88	5894.25	5695.04	27.89	30.08	299.26	-831.30	-1169.82	279.39	228.58	5.50	
6000.00	5830.83	5997.34	5795.88	28.23	30.44	298.94	-843.68	-1187.30	282.62	231.06	5.48	
6100.00	5929.12	6100.45	5897.12	28.55	30.78	298.65	-855.02	-1203.30	285.58	233.32	5.46	
6200.00	6027.71	6203.60	5998.71	28.85	31.09	298.40	-865.30	-1217.82	288.27	235.36	5.45	
6300.00	6126.58	6306.76	6100.63	29.13	31.38	298.17	-874.52	-1230.84	290.69	237.17	5.43	
6400.00	6225.70	6409.94	6202.84	29.38	31.64	297.98	-882.69	-1242.37	292.83	238.77	5.42	
6500.00	6325.03	6513.14	6305.31	29.61	31.88	297.81	-889.79	-1252.39	294.70	240.13	5.40	
6600.00	6424.54	6616.36	6408.00	29.82	32.10	297.67	-895.82	-1260.91	296.29	241.27	5.39	
6700.00	6524.22	6719.59	6510.87	30.01	32.29	297.55	-900.78	-1267.91	297.59	242.18	5.37	
6800.00	6624.02	6822.83	6613.88	30.18	32.46	297.46	-904.67	-1273.41	298.62	242.85	5.35	
6900.00	6723.91	6926.08	6717.01	30.32	32.61	297.40	-907.49	-1277.38	299.36	243.29	5.34	
7000.00	6823.87	7029.33	6820.22	30.44	32.73	297.36	-909.24	-1279.85	299.82	243.50	5.32	
7100.00	6923.86	7132.58	6923.47	30.54	32.83	297.34	-909.90	-1280.79	300.00	243.47	5.31	
7200.00	7023.86	7232.98	7023.86	30.64	32.92	181.71	-909.91	-1280.80	300.00	263.79	8.28	
7300.00	7123.86	7332.98	7123.86	30.75	33.03	181.71	-909.91	-1280.80	300.00	263.43	8.20	
7400.00	7223.86	7432.98	7223.86	30.86	33.13	181.71	-909.91	-1280.80	300.00	263.07	8.12	
7500.00	7323.86	7532.98	7323.86	30.98	33.24	181.71	-909.91	-1280.80	300.00	262.71	8.05	
7600.00	7423.86	7632.98	7423.86	31.09	33.35	181.71	-909.91	-1280.80	300.00	262.35	7.97	
7700.00	7523.86	7732.98	7523.86	31.21	33.46	181.71	-909.91	-1280.80	300.00	261.99	7.89	
7800.00	7623.86	7832.98	7623.86	31.33	33.57	181.71	-909.91	-1280.80	300.00	261.62	7.82	
7900.00	7723.86	7932.98	7723.86	31.45	33.68	181.71	-909.91	-1280.80	300.00	261.25	7.74	
8000.00	7823.86	8032.98	7823.86	31.57	33.79	181.71	-909.91	-1280.80	300.00	260.88	7.67	
8100.00	7923.86	8132.98	7923.86	31.69	33.90	181.71	-909.91	-1280.80	300.00	260.51	7.60	
8200.00	8023.86	8232.98	8023.86	31.81	34.02	181.71	-909.91	-1280.80	300.00	260.14	7.53	
8300.00	8123.86	8332.98	8123.86	31.93	34.13	181.71	-909.91	-1280.80	300.00	259.77	7.46	
8400.00	8223.86	8432.98	8223.86	32.06	34.25	181.71	-909.91	-1280.80	300.00	259.39	7.39	
8500.00	8323.86	8532.98	8323.86	32.18	34.37	181.71	-909.91	-1280.80	300.00	259.01	7.32	
8600.00	8423.86	8632.98	8423.86	32.31	34.49	181.71	-909.91	-1280.80	300.00	258.64	7.25	

# Weatherford International, Ltd.

## Anticollision Report

<b>Company:</b>	BERRY PETROLEUM COMPANY	<b>Date:</b> 5/25/2007	<b>Time:</b> 11:54:03	<b>Page:</b> 3
<b>Field:</b>	GARFIELD COUNTY (NAD 83)			
<b>Reference Site:</b>	BERRY 1-21D PAD	<b>Co-ordinate(NE) Reference:</b>	Well: BERRY 1-32D, True North	
<b>Reference Well:</b>	BERRY 1-32D	<b>Vertical (TVD) Reference:</b>	KB 8332.0	
<b>Reference Wellpath:</b>	1	<b>Db:</b> Sybase		

**Site:** BERRY 1-21D PAD  
**Well:** BERRY 1-31D  
**Wellpath:** 1 V0 Plan: Plan #1 V1

**Inter-Site Error:** 0.00 ft

Reference		Offset		Semi-Major Axis			Offset Location		Ctr-Ctr Distance	Edge Distance	Separation Factor	Warning
MD ft	TVD ft	MD ft	TVD ft	Ref ft	Offset ft	TFO-HS deg	North ft	East ft				
8700.00	8523.86	8732.98	8523.86	32.44	34.61	181.71	-909.91	-1280.80	300.00	258.26	7.19	
8800.00	8623.86	8832.98	8623.86	32.57	34.73	181.71	-909.91	-1280.80	300.00	257.87	7.12	
8900.00	8723.86	8932.98	8723.86	32.69	34.85	181.71	-909.91	-1280.80	300.00	257.49	7.06	
9000.00	8823.86	9032.98	8823.86	32.83	34.97	181.71	-909.91	-1280.80	300.00	257.11	6.99	
9100.00	8923.86	9132.98	8923.86	32.96	35.10	181.71	-909.91	-1280.80	300.00	256.72	6.93	
9200.00	9023.86	9232.98	9023.86	33.09	35.22	181.71	-909.91	-1280.80	300.00	256.34	6.87	
9300.00	9123.86	9332.98	9123.86	33.22	35.35	181.71	-909.91	-1280.80	300.00	255.95	6.81	
9400.00	9223.86	9432.98	9223.86	33.36	35.48	181.71	-909.91	-1280.80	300.00	255.56	6.75	
9500.00	9323.86	9532.98	9323.86	33.49	35.60	181.71	-909.91	-1280.80	300.00	255.17	6.69	
9600.00	9423.86	9632.98	9423.86	33.63	35.73	181.71	-909.91	-1280.80	300.00	254.78	6.63	
9700.00	9523.86	9732.98	9523.86	33.77	35.86	181.71	-909.91	-1280.80	300.00	254.39	6.58	
9800.00	9623.86	9832.98	9623.86	33.91	35.99	181.71	-909.91	-1280.80	300.00	253.99	6.52	
9900.00	9723.86	9932.98	9723.86	34.05	36.13	181.71	-909.91	-1280.80	300.00	253.60	6.47	
10000.00	9823.86	10032.98	9823.86	34.19	36.26	181.71	-909.91	-1280.80	300.00	253.20	6.41	

**Site:** BERRY 1-21D PAD  
**Well:** BERRY 1-33D  
**Wellpath:** 1 V0 Plan: Plan #1 V1

**Inter-Site Error:** 0.00 ft

Reference		Offset		Semi-Major Axis			Offset Location		Ctr-Ctr Distance	Edge Distance	Separation Factor	Warning
MD ft	TVD ft	MD ft	TVD ft	Ref ft	Offset ft	TFO-HS deg	North ft	East ft				
0.00	0.00	0.00	0.00	0.00	0.00	49.33	9.70	11.30	14.89		No Data	
100.00	100.00	100.00	100.00	0.09	0.09	49.33	9.70	11.30	14.89	14.71	83.87	
200.00	200.00	200.00	200.00	0.31	0.31	49.33	9.70	11.30	14.89	14.26	23.75	
300.00	300.00	300.12	300.12	0.54	0.54	164.80	9.65	11.08	14.91	13.83	13.84	
400.00	399.98	400.35	400.33	0.76	0.77	163.57	9.21	9.38	15.03	13.50	9.83	
500.00	499.92	500.58	500.50	1.00	1.00	161.18	8.34	5.99	15.29	13.31	7.72	
600.00	599.78	600.80	600.59	1.23	1.23	157.74	7.04	0.90	15.73	13.30	6.46	
700.00	699.54	701.02	700.56	1.48	1.48	153.48	5.30	-5.89	16.40	13.50	5.66	
800.00	799.18	801.12	800.29	1.74	1.74	148.79	3.18	-14.14	17.34	13.96	5.13	
900.00	898.79	901.11	899.90	2.01	2.01	144.53	1.02	-22.58	18.41	14.54	4.75	
1000.00	998.41	1001.09	999.50	2.28	2.28	140.76	-1.15	-31.02	19.58	15.19	4.46	
1100.00	1098.03	1101.08	1099.11	2.55	2.55	137.42	-3.31	-39.46	20.82	15.91	4.24	
1200.00	1197.65	1201.06	1198.71	2.83	2.82	134.47	-5.47	-47.91	22.12	16.68	4.07	
1300.00	1297.10	1301.26	1298.49	3.12	3.10	133.95	-7.76	-56.81	24.42	18.46	4.09	
1400.00	1396.12	1401.70	1398.17	3.44	3.41	133.35	-10.81	-68.71	27.48	20.94	4.20	
1500.00	1494.60	1502.18	1497.39	3.80	3.75	132.06	-14.73	-84.00	31.07	23.90	4.33	
1600.00	1592.41	1602.67	1596.01	4.21	4.14	130.36	-19.51	-102.66	35.21	27.33	4.47	
1700.00	1689.43	1703.18	1693.92	4.67	4.57	128.44	-25.15	-124.65	39.93	31.24	4.59	
1800.00	1785.71	1803.26	1790.75	5.17	5.05	126.75	-31.44	-149.17	45.21	35.61	4.71	
1900.00	1881.91	1903.11	1887.29	5.70	5.54	125.50	-37.76	-173.85	50.61	40.07	4.80	
2000.00	1978.11	2002.96	1983.84	6.23	6.04	124.50	-44.09	-198.52	56.02	44.53	4.87	
2100.00	2074.31	2102.81	2080.39	6.77	6.55	123.67	-50.42	-223.19	61.46	48.98	4.92	
2200.00	2170.51	2202.66	2176.93	7.32	7.07	122.98	-56.74	-247.86	66.90	53.43	4.97	
2300.00	2266.70	2302.51	2273.48	7.87	7.59	122.39	-63.07	-272.53	72.35	57.87	5.00	
2400.00	2362.90	2402.36	2370.02	8.43	8.11	121.88	-69.39	-297.21	77.81	62.31	5.02	
2500.00	2459.10	2502.20	2466.57	8.99	8.64	121.44	-75.72	-321.88	83.27	66.75	5.04	
2600.00	2555.30	2602.05	2563.11	9.55	9.16	121.06	-82.05	-346.55	88.74	71.19	5.06	
2700.00	2651.50	2701.90	2659.66	10.11	9.70	120.72	-88.37	-371.22	94.21	75.63	5.07	
2800.00	2747.69	2801.75	2756.21	10.68	10.23	120.41	-94.70	-395.89	99.68	80.07	5.08	
2900.00	2843.89	2901.60	2852.75	11.25	10.76	120.14	-101.02	-420.57	105.16	84.50	5.09	

# Weatherford International, Ltd.

## Anticollision Report

<b>Company:</b>	BERRY PETROLEUM COMPANY	<b>Date:</b> 5/25/2007	<b>Time:</b> 11:54:03	<b>Page:</b> 4
<b>Field:</b>	GARFIELD COUNTY (NAD 83)			
<b>Reference Site:</b>	BERRY 1-21D PAD	<b>Co-ordinate(NE) Reference:</b>	Well: BERRY 1-32D, True North	
<b>Reference Well:</b>	BERRY 1-32D	<b>Vertical (TVD) Reference:</b>	KB 8332.0	
<b>Reference Wellpath:</b>	1	<b>Db:</b> Sybase		

**Site:** BERRY 1-21D PAD  
**Well:** BERRY 1-33D  
**Wellpath:** 1 V0 Plan: Plan #1 V1

**Inter-Site Error:** 0.00 ft

Reference		Offset		Semi-Major Axis			Offset Location		Ctr-Ctr Distance	Edge Distance	Separation Factor	Warning
MD	TVD	MD	TVD	Ref	Offset	TFO-HS	North	East				
ft	ft	ft	ft	ft	ft	deg	ft	ft	ft	ft		
3000.00	2940.09	3001.45	2949.30	11.82	11.30	119.90	-107.35	-445.24	110.63	88.94	5.10	
3100.00	3036.29	3101.30	3045.84	12.39	11.83	119.68	-113.68	-469.91	116.11	93.37	5.11	
3200.00	3132.48	3201.15	3142.39	12.96	12.37	119.47	-120.00	-494.58	121.60	97.80	5.11	
3300.00	3228.68	3301.00	3238.93	13.53	12.91	119.29	-126.33	-519.25	127.08	102.24	5.12	
3400.00	3324.88	3400.84	3335.48	14.10	13.45	119.12	-132.65	-543.93	132.56	106.67	5.12	
3500.00	3421.08	3500.69	3432.02	14.68	13.99	118.96	-138.98	-568.60	138.05	111.10	5.12	
3600.00	3517.28	3600.54	3528.57	15.25	14.53	118.82	-145.31	-593.27	143.54	115.53	5.13	
3700.00	3613.47	3700.39	3625.12	15.83	15.07	118.69	-151.63	-617.94	149.02	119.96	5.13	
3800.00	3709.67	3800.24	3721.66	16.40	15.61	118.56	-157.96	-642.61	154.51	124.39	5.13	
3900.00	3805.87	3900.09	3818.21	16.98	16.15	118.45	-164.28	-667.29	160.00	128.82	5.13	
4000.00	3902.07	3999.94	3914.75	17.55	16.70	118.34	-170.61	-691.96	165.49	133.25	5.13	
4100.00	3998.26	4099.79	4011.30	18.13	17.24	118.24	-176.94	-716.63	170.98	137.68	5.14	
4200.00	4094.46	4199.63	4107.84	18.71	17.78	118.15	-183.26	-741.30	176.47	142.11	5.14	
4300.00	4190.66	4299.48	4204.39	19.28	18.32	118.06	-189.59	-765.97	181.96	146.54	5.14	
4400.00	4286.86	4399.33	4300.93	19.86	18.87	117.97	-195.91	-790.65	187.45	150.97	5.14	
4500.00	4383.06	4499.18	4397.48	20.44	19.41	117.89	-202.24	-815.32	192.94	155.40	5.14	
4600.00	4479.25	4599.03	4494.03	21.01	19.95	117.82	-208.57	-839.99	198.43	159.82	5.14	
4700.00	4575.45	4698.88	4590.57	21.59	20.50	117.75	-214.89	-864.66	203.92	164.25	5.14	
4800.00	4671.65	4798.73	4687.12	22.17	21.04	117.68	-221.22	-889.33	209.42	168.68	5.14	
4900.00	4767.85	4898.58	4783.66	22.75	21.59	117.62	-227.54	-914.01	214.91	173.11	5.14	
5000.00	4864.04	4998.42	4880.21	23.33	22.13	117.56	-233.87	-938.68	220.40	177.54	5.14	
5100.00	4960.24	5098.27	4976.75	23.91	22.68	117.50	-240.20	-963.35	225.89	181.96	5.14	
5200.00	5056.44	5198.12	5073.30	24.48	23.22	117.45	-246.52	-988.02	231.39	186.39	5.14	
5300.00	5152.64	5297.97	5169.85	25.06	23.77	117.40	-252.85	-1012.69	236.88	190.82	5.14	
5400.00	5248.84	5397.82	5266.39	25.64	24.31	117.35	-259.17	-1037.37	242.37	195.25	5.14	
5500.00	5345.03	5497.67	5362.94	26.22	24.86	117.30	-265.50	-1062.04	247.87	199.68	5.14	
5600.00	5441.36	5597.53	5459.49	26.74	25.40	117.19	-271.83	-1086.71	253.15	203.92	5.14	
5700.00	5538.12	5696.37	5555.22	27.14	25.88	116.90	-277.94	-1110.57	257.84	207.70	5.14	
5800.00	5635.30	5795.04	5651.18	27.53	26.25	116.64	-283.64	-1132.80	262.22	211.28	5.15	
5900.00	5732.88	5893.73	5747.55	27.89	26.61	116.40	-288.93	-1153.43	266.29	214.59	5.15	
6000.00	5830.83	5992.44	5844.28	28.23	26.94	116.19	-293.81	-1172.46	270.05	217.64	5.15	
6100.00	5929.12	6091.16	5941.35	28.55	27.26	116.01	-298.28	-1189.87	273.49	220.42	5.15	
6200.00	6027.71	6189.90	6038.72	28.85	27.55	115.84	-302.33	-1205.66	276.61	222.92	5.15	
6300.00	6126.58	6288.64	6136.38	29.13	27.82	115.70	-305.96	-1219.83	279.41	225.15	5.15	
6400.00	6225.70	6387.40	6234.28	29.38	28.07	115.57	-309.17	-1232.36	281.89	227.11	5.15	
6500.00	6325.03	6486.17	6332.41	29.61	28.30	115.46	-311.97	-1243.26	284.05	228.79	5.14	
6600.00	6424.54	6584.94	6430.72	29.82	28.51	115.37	-314.34	-1252.52	285.88	230.19	5.13	
6700.00	6524.22	6683.72	6529.18	30.01	28.69	115.30	-316.29	-1260.13	287.39	231.31	5.12	
6800.00	6624.02	6782.51	6627.78	30.18	28.86	115.24	-317.82	-1266.11	288.58	232.16	5.11	
6900.00	6723.91	6881.30	6726.47	30.32	29.00	115.20	-318.93	-1270.43	289.44	232.72	5.10	
7000.00	6823.87	6980.09	6825.22	30.44	29.13	115.18	-319.62	-1273.10	289.97	233.00	5.09	
7100.00	6923.86	7078.89	6924.01	30.54	29.23	115.17	-319.88	-1274.13	290.17	232.99	5.07	
7200.00	7023.86	7178.74	7023.86	30.64	29.34	-0.46	-319.88	-1274.14	290.17	254.78	8.20	
7300.00	7123.86	7278.74	7123.86	30.75	29.46	-0.46	-319.88	-1274.14	290.17	254.41	8.11	
7400.00	7223.86	7378.74	7223.86	30.86	29.58	-0.46	-319.88	-1274.14	290.17	254.04	8.03	
7500.00	7323.86	7478.74	7323.86	30.98	29.69	-0.46	-319.88	-1274.14	290.17	253.67	7.95	
7600.00	7423.86	7578.74	7423.86	31.09	29.81	-0.46	-319.88	-1274.14	290.17	253.30	7.87	
7700.00	7523.86	7678.74	7523.86	31.21	29.94	-0.46	-319.88	-1274.14	290.17	252.93	7.79	
7800.00	7623.86	7778.74	7623.86	31.33	30.06	-0.46	-319.88	-1274.14	290.17	252.55	7.71	
7900.00	7723.86	7878.74	7723.86	31.45	30.18	-0.46	-319.88	-1274.14	290.17	252.17	7.64	
8000.00	7823.86	7978.74	7823.86	31.57	30.31	-0.46	-319.88	-1274.14	290.17	251.79	7.56	

# Weatherford International, Ltd.

## Anticollision Report

<b>Company:</b>	BERRY PETROLEUM COMPANY	<b>Date:</b> 5/25/2007	<b>Time:</b> 11:54:03	<b>Page:</b> 5
<b>Field:</b>	GARFIELD COUNTY (NAD 83)			
<b>Reference Site:</b>	BERRY 1-21D PAD	<b>Co-ordinate(NE) Reference:</b>	Well: BERRY 1-32D, True North	
<b>Reference Well:</b>	BERRY 1-32D	<b>Vertical (TVD) Reference:</b>	KB 8332.0	
<b>Reference Wellpath:</b>	1	<b>Db:</b> Sybase		

**Site:** BERRY 1-21D PAD  
**Well:** BERRY 1-33D  
**Wellpath:** 1 V0 Plan: Plan #1 V1

**Inter-Site Error:** 0.00 ft

Reference MD ft	TVD ft	Offset		Semi-Major Axis			Offset Location		Ctr-Ctr Distance ft	Edge Distance ft	Separation Factor	Warning
		MD ft	TVD ft	Ref ft	Offset ft	TFO-HS deg	North ft	East ft				
8100.00	7923.86	8078.74	7923.86	31.69	30.43	-0.46	-319.88	-1274.14	290.17	251.41	7.49	
8200.00	8023.86	8178.74	8023.86	31.81	30.56	-0.46	-319.88	-1274.14	290.17	251.03	7.41	
8300.00	8123.86	8278.74	8123.86	31.93	30.69	-0.46	-319.88	-1274.14	290.17	250.65	7.34	
8400.00	8223.86	8378.74	8223.86	32.06	30.82	-0.46	-319.88	-1274.14	290.17	250.26	7.27	
8500.00	8323.86	8478.74	8323.86	32.18	30.95	-0.46	-319.88	-1274.14	290.17	249.88	7.20	
8600.00	8423.86	8578.74	8423.86	32.31	31.08	-0.46	-319.88	-1274.14	290.17	249.49	7.13	
8700.00	8523.86	8678.74	8523.86	32.44	31.21	-0.46	-319.88	-1274.14	290.17	249.10	7.07	
8800.00	8623.86	8778.74	8623.86	32.57	31.34	-0.46	-319.88	-1274.14	290.17	248.71	7.00	
8900.00	8723.86	8878.74	8723.86	32.69	31.48	-0.46	-319.88	-1274.14	290.17	248.32	6.93	
9000.00	8823.86	8978.74	8823.86	32.83	31.61	-0.46	-319.88	-1274.14	290.17	247.93	6.87	
9100.00	8923.86	9078.74	8923.86	32.96	31.75	-0.46	-319.88	-1274.14	290.17	247.54	6.81	
9200.00	9023.86	9178.74	9023.86	33.09	31.89	-0.46	-319.88	-1274.14	290.17	247.14	6.74	
9300.00	9123.86	9278.74	9123.86	33.22	32.03	-0.46	-319.88	-1274.14	290.17	246.75	6.68	
9400.00	9223.86	9378.74	9223.86	33.36	32.17	-0.46	-319.88	-1274.14	290.17	246.35	6.62	
9500.00	9323.86	9478.74	9323.86	33.49	32.31	-0.46	-319.88	-1274.14	290.17	245.95	6.56	
9600.00	9423.86	9578.74	9423.86	33.63	32.45	-0.46	-319.88	-1274.14	290.17	245.55	6.50	
9700.00	9523.86	9678.74	9523.86	33.77	32.59	-0.46	-319.88	-1274.14	290.17	245.15	6.45	
9800.00	9623.86	9778.74	9623.86	33.91	32.73	-0.46	-319.88	-1274.14	290.17	244.75	6.39	
9900.00	9723.86	9878.74	9723.86	34.05	32.88	-0.46	-319.88	-1274.14	290.17	244.35	6.33	
10000.00	9823.86	9978.74	9823.86	34.19	33.02	-0.46	-319.88	-1274.14	290.17	243.95	6.28	