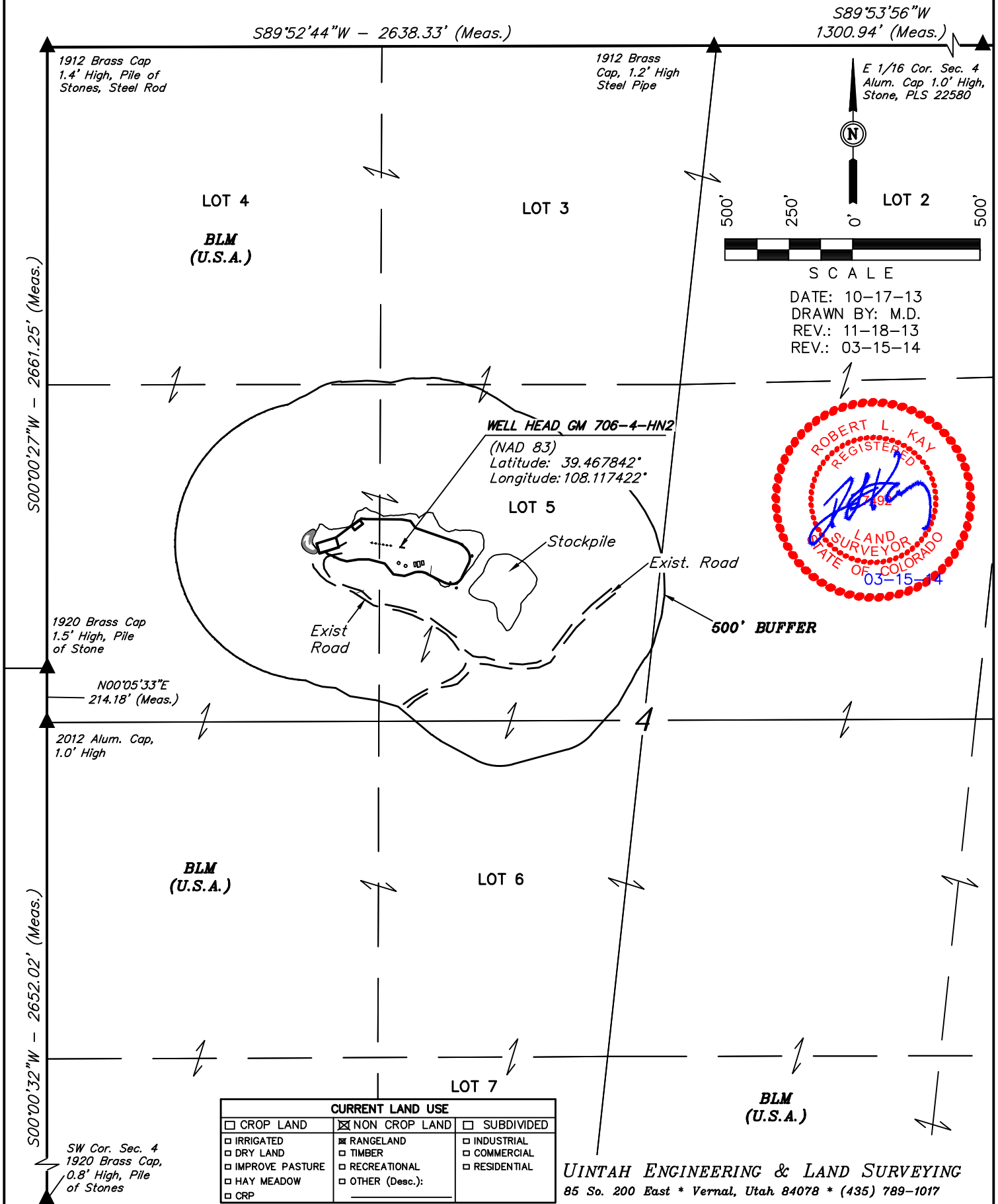


WPX Energy Rocky Mountain, LLC
PLAT #6_LOCATION DRAWING FOR MV 28-4
SECTION 4, T7S, R96W, 6th P.M.



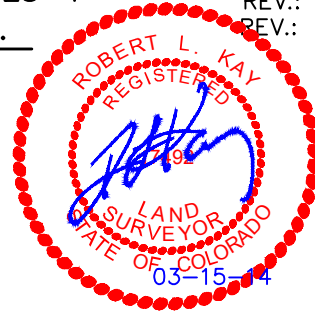
CURRENT LAND USE		
<input type="checkbox"/> CROP LAND	<input checked="" type="checkbox"/> NON CROP LAND	<input type="checkbox"/> SUBDIVIDED
<input type="checkbox"/> IRRIGATED	<input checked="" type="checkbox"/> RANGELAND	<input type="checkbox"/> INDUSTRIAL
<input type="checkbox"/> DRY LAND	<input type="checkbox"/> TIMBER	<input type="checkbox"/> COMMERCIAL
<input type="checkbox"/> IMPROVE PASTURE	<input type="checkbox"/> RECREATIONAL	<input type="checkbox"/> RESIDENTIAL
<input type="checkbox"/> HAY MEADOW	<input type="checkbox"/> OTHER (Desc.):	
<input type="checkbox"/> CRP		

UINTAH ENGINEERING & LAND SURVEYING
 85 So. 200 East * Vernal, Utah 84078 * (435) 789-1017

WPX Energy Rocky Mountain, LLC

PLAT #6B_LOCATION TABLE FOR MV 28-4
SECTION 4, T7S, R96W, 6th P.M.

DATE: 10-17-13
DRAWN BY: M.D.
REV.: 11-18-13
REV.: 03-15-14

**DISTANCES FROM WELL HEAD(S) (IN FEET)**

Description	Building	Building Unit	High Occu. Building	DOAA	Public Road	Above Ground Utility	Railroad	Property Line
GM 706-4-HN2	N76°E 1192	>5280	>5280	>5280	>5280	>5280	>5280	N75°E 2503
GM 711-4	N75°E 1185	>5280	>5280	>5280	>5280	>5280	>5280	N75°E 2496
GM 703-4-HN1	N75°E 1178	>5280	>5280	>5280	>5280	>5280	>5280	N75°E 2489
EXISTING WELLS (IN FEET)								
MV 28-4	N77°E 1226	>5280	>5280	>5280	>5280	>5280	>5280	N75°E 2538
GM 12-4	N77°E 1240	>5280	>5280	>5280	>5280	>5280	>5280	N75°E 2551
GM 412-4	N77°E 1254	>5280	>5280	>5280	>5280	>5280	>5280	N75°E 2565
GM 322-4	N77°E 1268	>5280	>5280	>5280	>5280	>5280	>5280	N75°E 2579
GM 512-4	N78°E 1282	>5280	>5280	>5280	>5280	>5280	>5280	N75°E 2592
GM 312-4	N78°E 1296	>5280	>5280	>5280	>5280	>5280	>5280	N75°E 2606

DISTANCES FROM PRODUCTION EQUIPMENT (IN FEET)

Description	Building	Building Unit	High Occu. Building	DOAA	Public Road	Above Ground Utility	Railroad	Property Line
TANKS	N81°E 1317	>5280	>5280	>5280	>5280	>5280	>5280	N77°E 2623
SEPARATORS	N80°E 1430	>5280	>5280	>5280	>5280	>5280	>5280	N77°E 2738