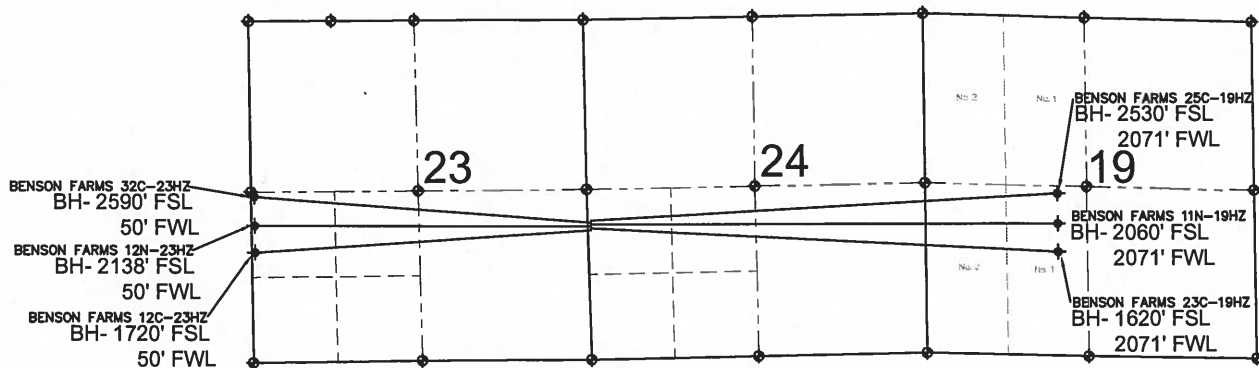


BENSON FARMS 11N-19HZ MULTI-WELL PLAN

SECTION 24, TOWNSHIP 3 NORTH, RANGE 68 WEST, 6TH P.M.



NOTES:

BENSON FARMS 25C-19HZ TO BE AT 2165' FSL, 51' FWL.
 BOTTOM HOLE AT 2530' FSL & 2071' FWL, SEC. 19, T3N, R67W.
 BENSON FARMS 32C-23HZ TO BE AT 2135' FSL, 50' FWL.
 BOTTOM HOLE AT 2590' FSL & 50' FWL, SEC. 23.
 BENSON FARMS 11N-19HZ TO BE AT 2105' FSL, 50' FWL.
 BOTTOM HOLE AT 2060' FSL & 2071' FWL, SEC. 19, T3N, R67W.
 BENSON FARMS 12N-23HZ TO BE AT 2075' FSL, 50' FWL.
 BOTTOM HOLE AT 2138' FSL & 50' FWL, SEC. 23.
 BENSON FARMS 23C-19HZ TO BE AT 2045' FSL, 50' FWL.
 BOTTOM HOLE AT 1620' FSL & 2071' FWL, SEC. 19, T3N, R67W.
 BENSON FARMS 12C-23HZ TO BE AT 2015' FSL, 50' FWL.
 BOTTOM HOLE AT 1720' FSL & 50' FWL, SEC. 23.

LEGEND

= EXISTING MONUMENT
 = BOTTOM HOLE
 BH= BOTTOM HOLE
 = PROPOSED WELL
 = EXISTING WELL

PREPARED BY:



KERR-MCGEE OIL & GAS ONSHORE LP

FIELD DATE:
10-18-13

DRAWING DATE:
12-11-13

SURFACE LOCATION:

NW 1/4 SW 1/4, SEC. 24, T3N, R68W, 6TH P.M.
 WELD COUNTY, COLORADO

