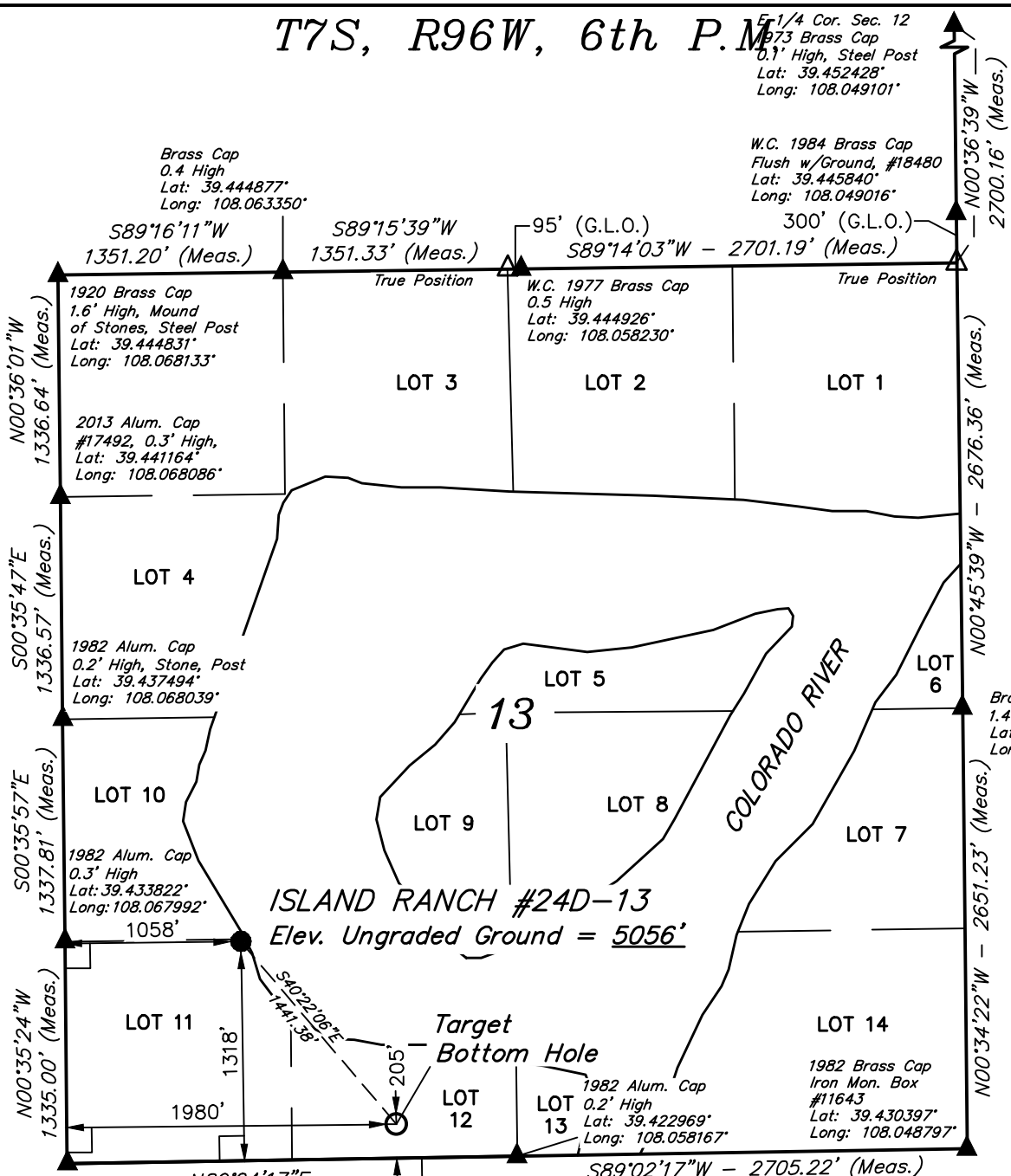


T7S, R96W, 6th P.M.

E 1/4 Cor. Sec. 12
#73 Brass Cap
0.1' High, Steel Post
Lat: 39.452428°
Long: 108.049101°

W.C. 1984 Brass Cap
Flush w/Ground, #18480
Lat: 39.445840°
Long: 108.049016°

Brass Cap
0.4 High
Lat: 39.444877°
Long: 108.063350°



Caerus Oil & Gas LLC

Well location, ISLAND RANCH #24D-13, located as shown in LOT 11 of Section 13, T7S, R96W, 6th P.M., Garfield County, Colorado.

BASIS OF ELEVATION

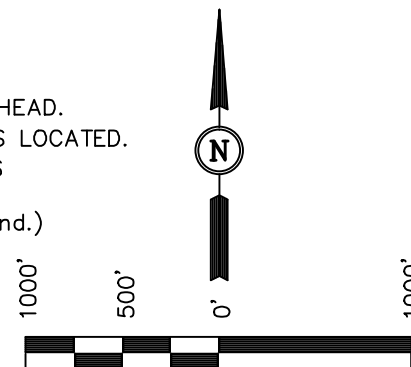
SPOT ELEVATION AT THE NORTHWEST CORNER OF SECTION 30, T5S, R95W, 6th P.M., TAKEN FROM THE FORKED GULCH QUADRANGLE, GARFIELD COUNTY, COLORADO, 7.5 MINUTE QUAD. (TOPOGRAPHIC MAP) PUBLISHED BY THE UNITED STATES DEPARTMENT OF THE INTERIOR, GEOLOGICAL SURVEY. SAID ELEVATION IS MARKED AS BEING 5966 FEET.

BASIS OF BEARINGS

BASIS OF BEARINGS IS A G.P.S. OBSERVATION.

LEGEND:

- └─ = 90° SYMBOL
- = PROPOSED WELL HEAD.
- ▲ = SECTION CORNERS LOCATED.
- △ = SECTION CORNERS RE-ESTABLISHED. (Not Set on Ground.)



THIS IS TO CERTIFY THAT THE ABOVE PLAT WAS PREPARED FROM FIELD NOTES OF ACTUAL SURVEYS MADE BY ME OR UNDER MY SUPERVISION AND THAT THE SAME ARE TRUE AND CORRECT TO THE BEST OF MY KNOWLEDGE AND BELIEF.

ROBERT L. BAKER, M.D.
REGISTERED LAND SURVEYOR
REGISTRATION NO. 17492
STATE OF COLORADO
03-18-14

REVISED: 03-18-14

UINTAH ENGINEERING & LAND SURVEYING
85 SOUTH 200 EAST - VERNAL, UTAH 84078
(435) 789-1017

SCALE 1" = 1000'	DATE SURVEYED: 02-20-14	DATE DRAWN: 02-27-14
PARTY BRIAN BAKER, M.D.	REFERENCES PLAT	
WEATHER COLD	FILE Caerus Oil & Gas LLC	

NAD 83 (TARGET BOTTOM HOLE)	NAD 83 (SURFACE LOCATION)
LATITUDE = 39°25'50.91" (39.430808)	LATITUDE = 39°26'01.76" (39.433822)
LONGITUDE = 108°03'39.40" (108.060944)	LONGITUDE = 108°03'51.29" (108.064247)
NAD 27 (TARGET BOTTOM HOLE)	NAD 27 (SURFACE LOCATION)
LATITUDE = 39°25'50.98" (39.430828)	LATITUDE = 39°26'01.84" (39.433844)
LONGITUDE = 108°03'37.13" (108.060314)	LONGITUDE = 108°03'49.02" (108.063617)

PDOP = 1.4

2006 Alum. Cap
#17492
Lat: 39.430158°
Long: 108.067944°

N89°04'17"E
2705.17' (Meas.)

S89°02'17"W - 2705.22' (Meas.)

1982 Brass Cap
Iron Mon. Box
#11643
Lat: 39.430397°
Long: 108.048797°

1982 Alum. Cap
0.2' High
Lat: 39.422969°
Long: 108.058167°

Target
Bottom Hole

ISLAND RANCH #24D-13
Elev. Ungraded Ground = 5056'

Brass Cap
1.4' High
Lat: 39.437672°
Long: 108.048886°

1982 Alum. Cap
0.2' High, Stone, Post
Lat: 39.437494°
Long: 108.068039°

2013 Alum. Cap
#17492, 0.3' High,
Lat: 39.441164°
Long: 108.068086°

1920 Brass Cap
1.6' High, Mound
of Stones, Steel Post
Lat: 39.444831°
Long: 108.068133°

W.C. 1977 Brass Cap
0.5 High
Lat: 39.444926°
Long: 108.058230°