

T7S, R96W, 6th P.M.

E 1/4 Cor. Sec. 12  
1973 Brass Cap  
0.1' High, Steel Post  
Lat: 39.452428°  
Long: 108.049101°

W.C. 1984 Brass Cap  
Flush w/Ground, #18480  
Lat: 39.445840°  
Long: 108.049016°

## Caerus Oil & Gas LLC

Well location, ISLAND RANCH #21B-24 (SURFACE LOCATION), located as shown in LOT 11 of Section 30, T5S, R95W, 6th P.M., TAKEN FROM THE FORKED GULCH QUADRANGLE, GARFIELD COUNTY, COLORADO, 7.5 MINUTE QUAD. (TOPOGRAPHIC MAP) PUBLISHED BY THE UNITED STATES DEPARTMENT OF THE INTERIOR, GEOLOGICAL SURVEY. SAID ELEVATION IS MARKED AS BEING 5966 FEET.

### BASIS OF ELEVATION

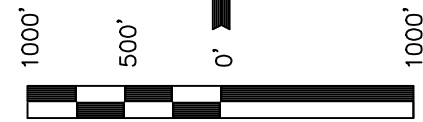
SPOT ELEVATION AT THE NORTHWEST CORNER OF SECTION 30, T5S, R95W, 6th P.M., TAKEN FROM THE FORKED GULCH QUADRANGLE, GARFIELD COUNTY, COLORADO, 7.5 MINUTE QUAD. (TOPOGRAPHIC MAP) PUBLISHED BY THE UNITED STATES DEPARTMENT OF THE INTERIOR, GEOLOGICAL SURVEY. SAID ELEVATION IS MARKED AS BEING 5966 FEET.

### BASIS OF BEARINGS

BASIS OF BEARINGS IS A G.P.S. OBSERVATION.

#### LEGEND:

- └─┘ = 90° SYMBOL
- = PROPOSED WELL HEAD.
- ▲ = SECTION CORNERS LOCATED.
- △ = SECTION CORNERS RE-ESTABLISHED.  
(Not Set on Ground.)



#### CERTIFICATE

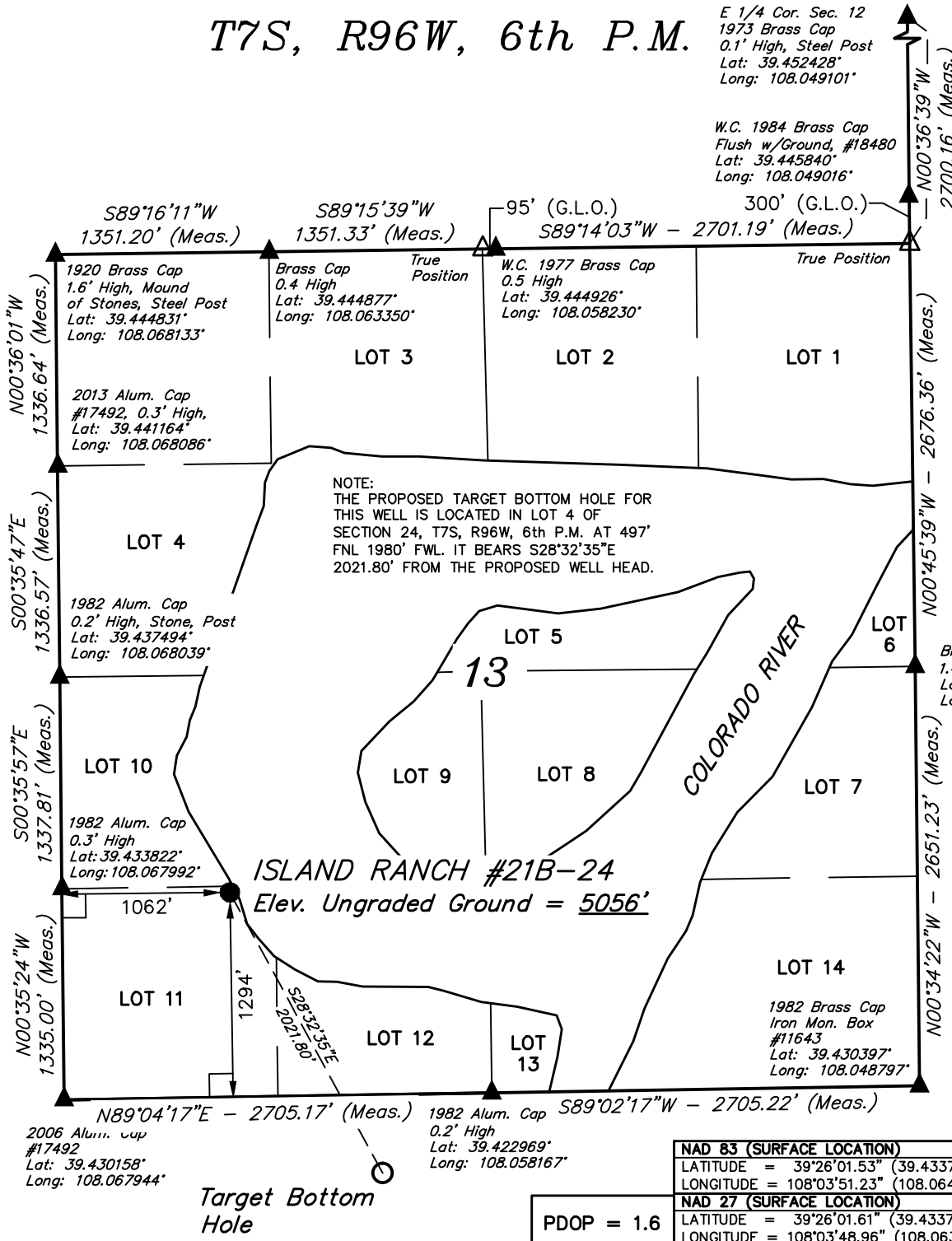
THIS IS TO CERTIFY THAT THE ABOVE PLAT WAS PREPARED FROM FIELD NOTES OF ACTUAL SURVEYS MADE BY ME OR UNDER MY SUPERVISION AND THAT THE SAME ARE TRUE AND CORRECT TO THE BEST OF MY KNOWLEDGE AND BELIEF.

REGISTERED LAND SURVEYOR  
REGISTRATION NO. 17492  
STATE OF COLORADO  
03-18-14

REVISED: 03-18-14

**UINTAH ENGINEERING & LAND SURVEYING**  
85 SOUTH 200 EAST - VERNAL, UTAH 84078  
(435) 789-1017

SCALE 1" = 1000'	DATE SURVEYED: 02-20-14	DATE DRAWN: 02-27-14
PARTY BRIAN BAKER, M.D.	REFERENCES PLAT	
WEATHER COLD	FILE Caerus Oil & Gas LLC	



<b>NAD 83 (SURFACE LOCATION)</b>
LATITUDE = 39°26'01.53" (39.433758)
LONGITUDE = 108°03'51.23" (108.064231)
<b>NAD 27 (SURFACE LOCATION)</b>
LATITUDE = 39°26'01.61" (39.433781)
LONGITUDE = 108°03'48.96" (108.063600)

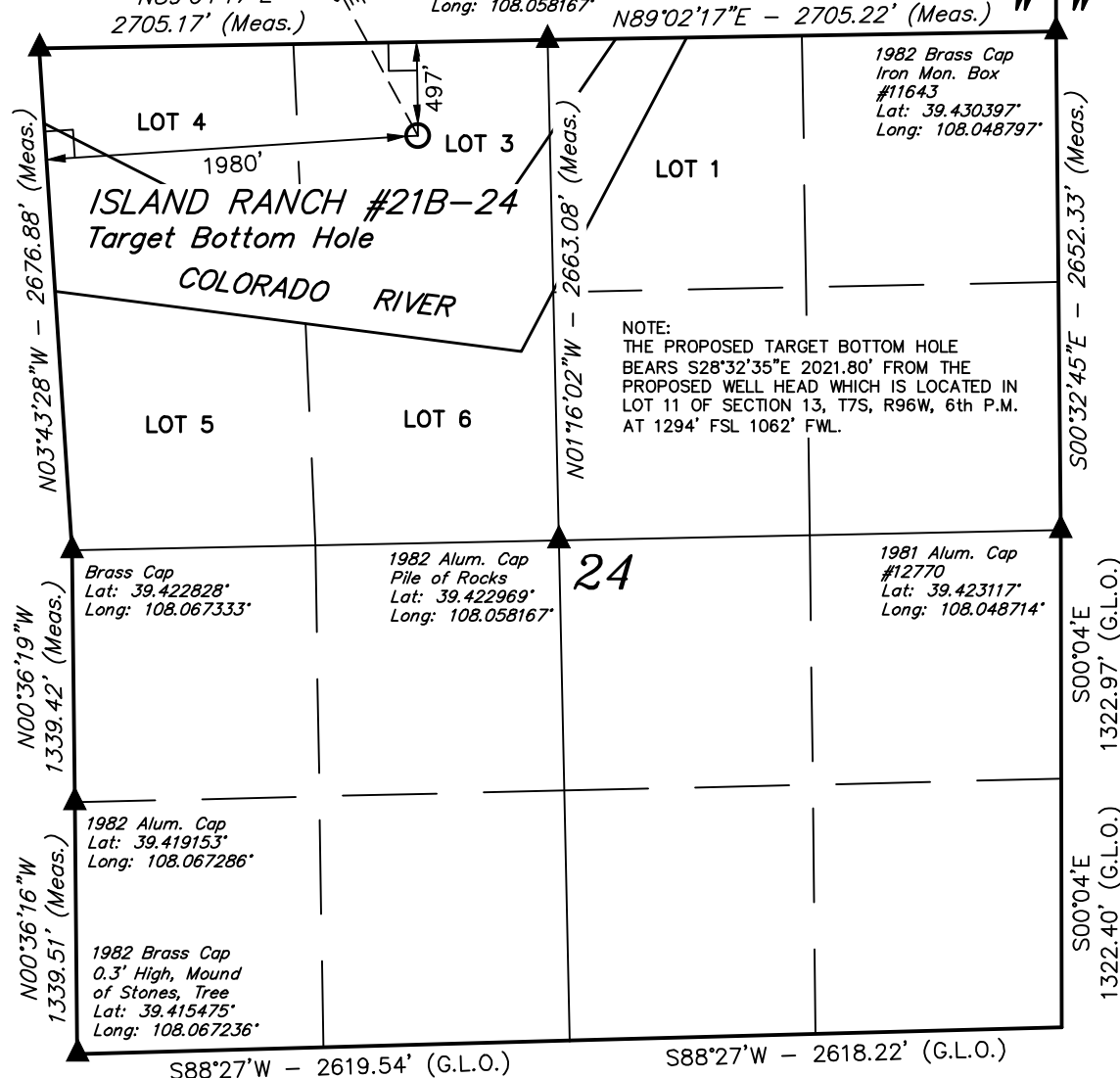
PDOP = 1.6

Surface Location ● T7S, R96W, 6th P.M.

2006 Alum. Cap  
#17492  
Lat: 39.430158°  
Long: 108.067944°

1982 Alum. Cap  
0.2' High  
Lat: 39.422969°  
Long: 108.058167°

R 96  
W 95  
W



#### LEGEND:

└─┘ = 90° SYMBOL

● = PROPOSED WELL HEAD.

▲ = SECTION CORNERS LOCATED.

#### NAD 83 (TARGET BOTTOM HOLE)

LATITUDE = 39°25'43.97" (39.428881)  
LONGITUDE = 108°03'38.94" (108.060817)

#### NAD 27 (TARGET BOTTOM HOLE)

LATITUDE = 39°25'44.05" (39.428903)  
LONGITUDE = 108°03'36.66" (108.060183)

## Caerus Oil & Gas LLC

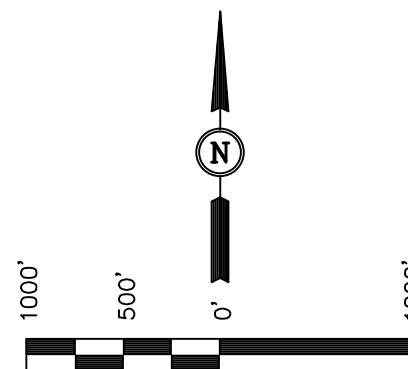
Well location, ISLAND RANCH #21B-24 (TARGET BOTTOM HOLE), located as shown in LOT 3 of Section 24, T7S, R96W, 6th P.M., Garfield County, Colorado.

### BASIS OF ELEVATION

SPOT ELEVATION AT THE NORTHWEST CORNER OF SECTION 30, T5S, R95W, 6th P.M., TAKEN FROM THE FORKED GULCH QUADRANGLE, GARFIELD COUNTY, COLORADO, 7.5 MINUTE QUAD. (TOPOGRAPHIC MAP) PUBLISHED BY THE UNITED STATES DEPARTMENT OF THE INTERIOR, GEOLOGICAL SURVEY. SAID ELEVATION IS MARKED AS BEING 5966 FEET.

### BASIS OF BEARINGS

BASIS OF BEARINGS IS A G.P.S. OBSERVATION.



SCALE  
CERTIFICATE

THIS IS TO CERTIFY THAT THE ABOVE PLAT WAS PREPARED FROM FIELD NOTES OF ACTUAL SURVEYS MADE BY ME OR UNDER MY SUPERVISION AND THAT THE SAME ARE TRUE AND CORRECT TO THE BEST OF MY KNOWLEDGE AND BELIEF.

REGISTERED LAND SURVEYOR  
REGISTRATION NO. 17492  
STATE OF COLORADO  
02-27-14

## UINTAH ENGINEERING & LAND SURVEYING

85 SOUTH 200 EAST - VERNAL, UTAH 84078

(435) 789-1017

SCALE 1" = 1000'	DATE SURVEYED: 02-20-14	DATE DRAWN: 02-27-14
PARTY BRIAN BAKER, M.D.	REFERENCES PLAT	
WEATHER COLD	FILE Caerus Oil & Gas LLC	