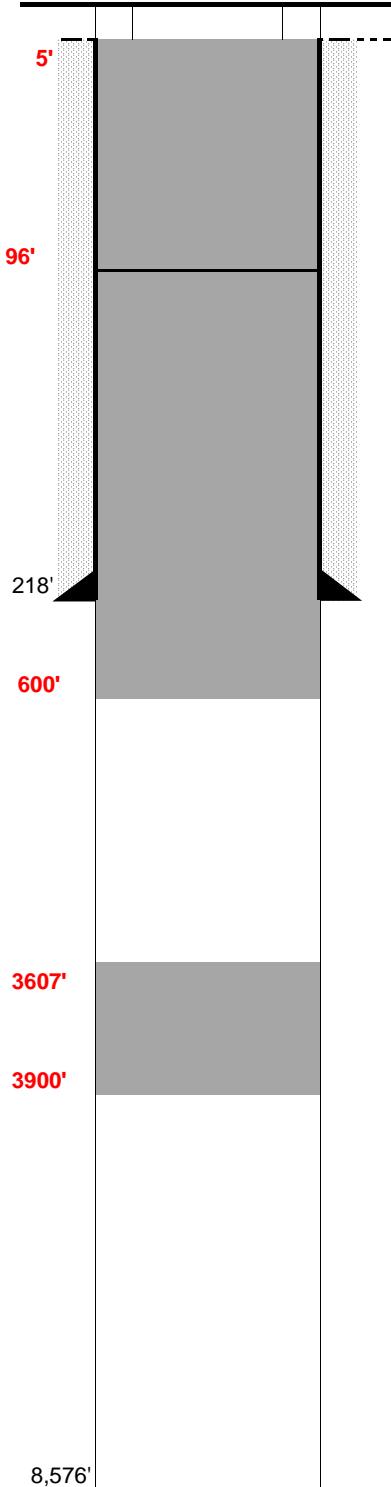


FINAL AS-BUILD

WELL NAME: State 1-16
OPERATOR: McCulloch Oil Corporation
COMP ZONE: Dry Hole
LOCATION: 9N 60W S16 SW SW

COUNTY: Weld
STATE: Colorado
API : 05-123-33402

SPUD: 10/20/70
P&A: 11/7/70
GL: 5,032'



SURFACE CASING

DEPTH: 218' SIZE: 9.625" GRADE: H-40 WT (#/ft): 32.3
CEMENT: 200 sx of Class G + 3% CaCl2
COMMENTS: _____

PRODUCTION CASING

DEPTH: _____ SIZE: _____ GRADE: _____ WT (#/ft): _____
CEMENT: _____ TOC: _____
COMMENTS: _____

PERFS: _____ - _____ PROD ZONE 1: _____
PERFS: _____ - _____ ZONE 2: _____
PERFS: _____ - _____ ZONE 3: _____

PREVIOUS PLUGS

RECOVERED: _____ SIZE: _____
CMT 1: 8,333' - 8,240' COMMENT: 25 sx Cement
CMT 2: 245' - 215' COMMENT: 15 sx Cement
CMT 3: 30' - 0' COMMENT: 10 sx Cement

ACTUAL: Plug #1: 3,900' to 3,607' (125 sx) tagged plug

Plug #2: 600' to 96' (42 sx) tagged plug

Plug #3: 96' to surface (30 sx)

Washed to 4003', hole heaving bad. Decision made not to wash deeper

FORMATIONS:

NIOBRARA: 6,307'
FORT HAYS _____
CODELL _____
D SAND 7,072'
D SILT _____
J SAND 7,150'