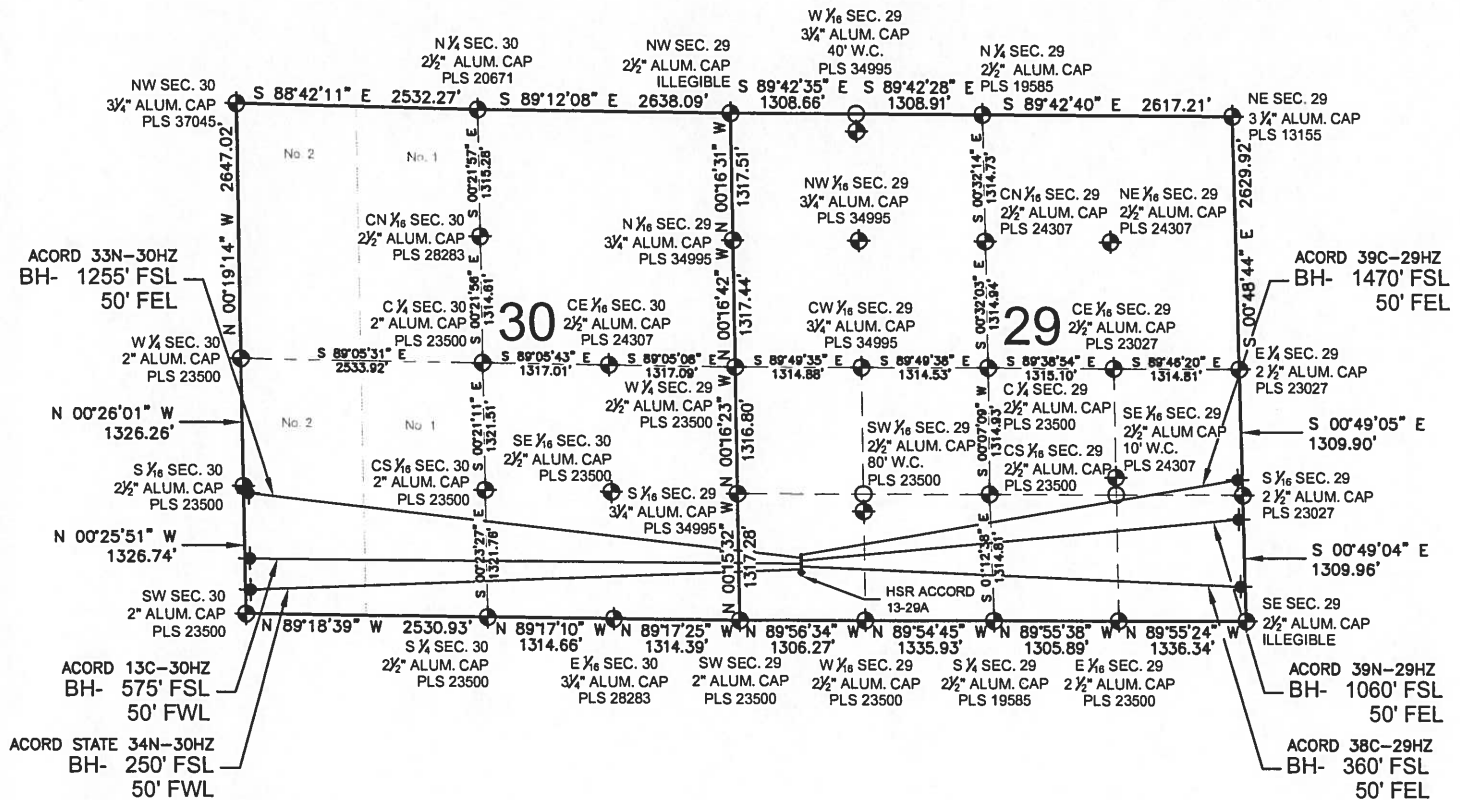


ACORD STATE 34N-30HZ MULTI-WELL PLAN

SECTION 29, TOWNSHIP 3 NORTH, RANGE 67 WEST, 6TH P.M.



NOTES:

ACORD 39C-29HZ TO BE AT 680' FSL, 651' FWL.
BOTTOM HOLE AT 1470' FSL & 50' FEL.
ACORD 33N-30HZ TO BE AT 650' FSL, 651' FWL.
BOTTOM HOLE AT 1255' FSL & 50' FWL, SEC. 30.
ACORD 39N-29HZ TO BE AT 620' FSL, 651' FWL.
BOTTOM HOLE AT 1060' FSL & 50' FEL.
ACORD 13C-30HZ TO BE AT 590' FSL, 651' FWL.
BOTTOM HOLE AT 575' FSL & 50' FWL, SEC. 30.
ACORD 38C-29HZ TO BE AT 560' FSL, 651' FWL.
BOTTOM HOLE AT 360' FSL & 50' FEL.
ACORD STATE 34N-30HZ TO BE AT 530' FSL, 651' FWL.
BOTTOM HOLE AT 250' FSL & 50' FWL, SEC. 30.
EXISTING HSR ACORD 13-29 IS 500' FSL, 651' FWL

LEGEND

◆ = EXISTING MONUMENT ◆ = BOTTOM HOLE BH = BOTTOM HOLE
• = PROPOSED WELL ◆ = EXISTING WELL ○ = CALCULATED POSITION

PREPARED BY:



KERR-MCGEE OIL & GAS ONSHORE LP

FIELD DATE:
07-17-13

DRAWING DATE:
10-15-13

SURFACE LOCATION:

SW 1/4 SW 1/4, SEC. 29, T3N, R67W, 6TH P.M.
WELD COUNTY, COLORADO

