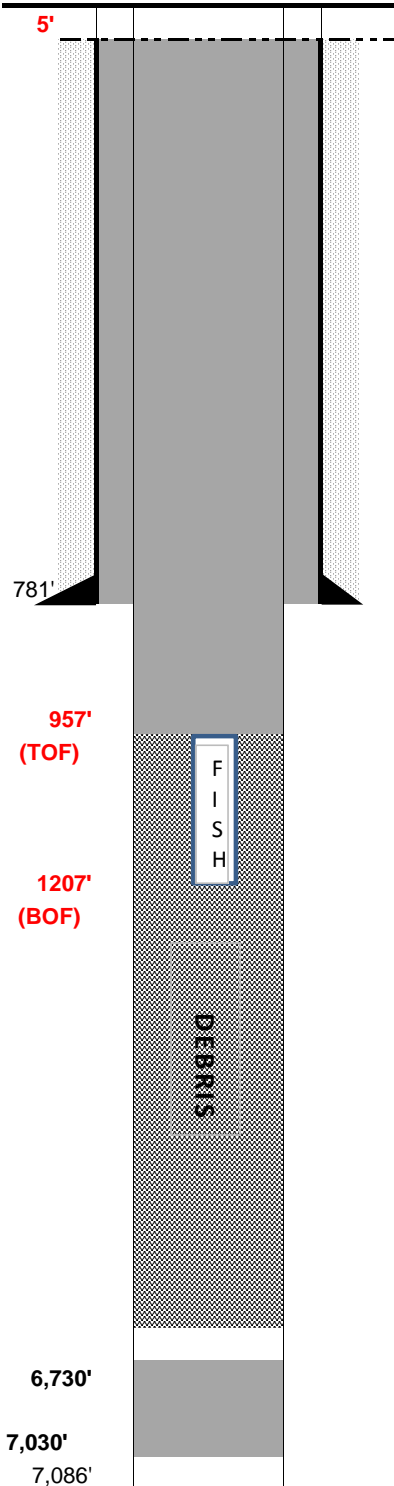


FINAL AS-BUILD

WELL NAME:	State #1	COUNTY:	Weld	SPUD:	5/2/52
OPERATOR:	The California Company	STATE:	Colorado	P&A:	6/5/52
COMP ZONE:	D Sand, J Sand, Lakota	API :	05-123-05006	GL:	4,940'
LOCATION:	9N 59W S36 NW NE				



SURFACE CASING

DEPTH: 781' SIZE: 10.75" GRADE: J-55 WT (#/ft): 40.5
CEMENT: 400 sx "common cement"
COMMENTS: Estimated Class D or H Cmt.

PRODUCTION CASING

DEPTH: SIZE: GRADE: WT (#/ft):
CEMENT: TOC:
COMMENTS: DST 6672-6713', then DST 6756-6769' w/ 5-1/2" packer

PERFS: - PROD ZONE 1:
PERFS: - ZONE 2:
PERFS: - ZONE 3:

PREVIOUS PLUGS

RECOVERED: SIZE:
CMT 1: 6,730' - 7,030' COMMENT: 150 sk cement plug
CMT 2: 700' - 900' COMMENT: 100 sk cement plug
CMT 3: 0' - 29' COMMENT: 15 sx - surface w/ 4" pipe marker
OTHER: Plug 1: 957' - 912' (150 sx - tagged)
Plug 2: 912' - 103' (250 sx - tagged)
Plug 3: 103' - Surface (30 sx - cement returns)

FORMATIONS:

FOX HILLS:
NIOBRARA: 4782' Estimated
CODELL:
D SAND: 6,230'
J SAND: 6,305'
LAKOTA: 6,585'