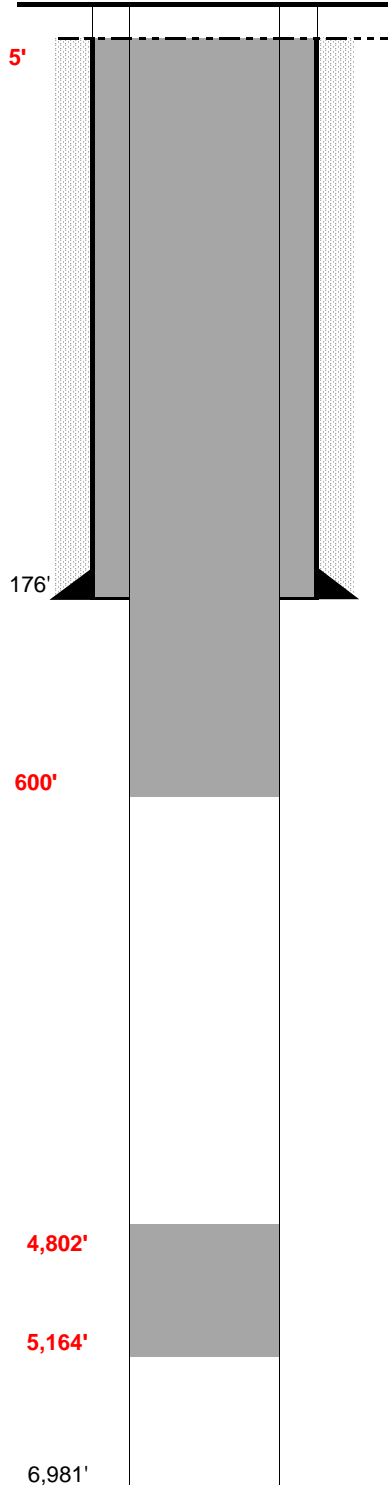


FINAL AS-BUILD

WELL NAME: Stanley #14-23
OPERATOR: Gear Petroleum Company Inc.
COMP ZONE: D Sand & J Sand
LOCATION: 8N 60W S23 SW SW

COUNTY: Weld
STATE: Colorado
API : 05-123-10707
GL/KB: 4911' / 4920'

SPUD: 7/11/82
COMP: 7/18/82
ABDN: 7/18/82
COGCC: DA



SURFACE CASING

DEPTH: 176' SIZE: 8.625" GRADE: J-55 WT (#/ft): 24.0
CEMENT: 110 sx - regular cmt. With 3% CaCl₂
COMMENTS:

PRODUCTION CASING

DEPTH: SIZE: GRADE: WT (#/ft):
CEMENT: TOC:
COMMENTS:

PERFS: - PROD ZONE 1: D Sand
PERFS: - ZONE 2:
PERFS: - ZONE 3:

PREVIOUS PLUGS

RECOVERED: SIZE:
CMT 1: 155' - 195' COMMENT: 20 sx - half in half out surf csg.
CMT 2: 0' - 30' COMMENT: 10 sx - surface
CMT 3: COMMENT:

OTHER: Plug #1: from 5,164' to 4,802' (100 sx)

Plug #2: 600' to 390' (260 sx)

Plug #3: 390' to Surface (150 sx)

FORMATIONS:

SUSSEX	3,428'
NIOBRARA	6,120'
CARLILE	6,428'
GREENHORN	6,474'
BENONITE	6,839'
D SAND:	6,846'
J SAND	6,927'