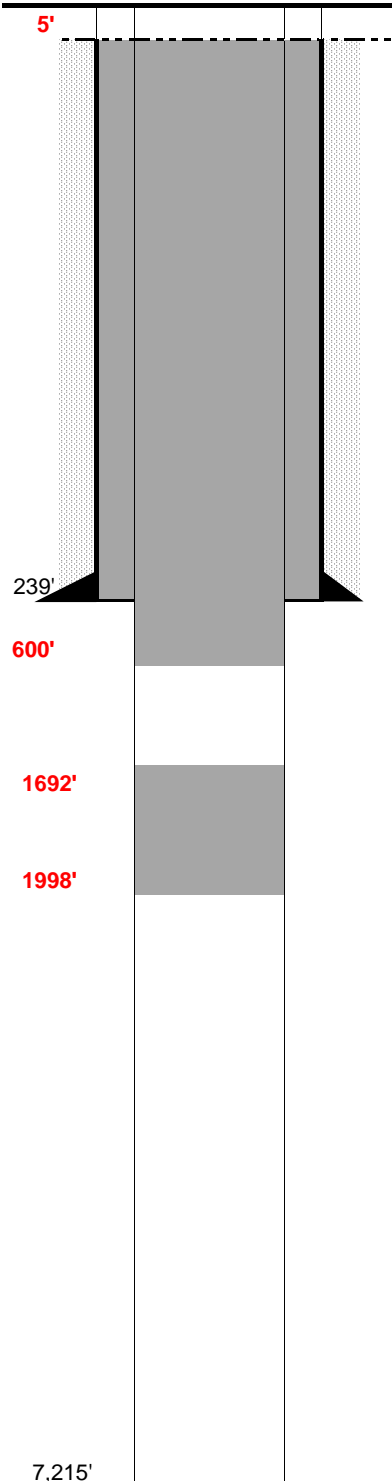


FINAL AS-BUILD

WELL NAME:	Sohio State #1	COUNTY:	Weld	SPUD:	4/7/77
OPERATOR:	M & T Inc - 52030	STATE:	Colorado	P&A:	4/15/77
COMP ZONE:	J Sand	API :	05-123-09178	GL:	4,968'
LOCATION:	9N 61W S36 SW SE				



SURFACE CASING

DEPTH: 239' SIZE: 8 5/8" GRADE: J-55 WT (#/ft): 24.0
CEMENT: 250 sx "common cement"
COMMENTS:

PRODUCTION CASING

DEPTH: SIZE: GRADE: WT (#/ft):
CEMENT: TOC:
COMMENTS:

PERFS: - PROD ZONE 1:
PERFS: - ZONE 2:
PERFS: - ZONE 3:

PREVIOUS PLUGS

RECOVERED: SIZE:
CMT 1: 239' - 189' COMMENT: 15 sk cement plug
CMT 2: 0' - 33' COMMENT: 10 sx - surface w/ 4" pipe marker
CMT 3: - COMMENT:

ACTUAL: Plug 1: 1998' - 1692" (100 sx) tagged plug
Plug 2: 600' - Surface' (425 sx) Circulated to surface

Washed to 1998', lost circulation, hole sticky. Decision not to wash deeper

FORMATIONS:

NIOBRARA: 6,304'
CODELL: 6,619'
D SAND: 7,057'
J SAND: 7,140'