

## SERVICE INVOICE

Nº 12524

WELL NO. AND FARM E H m Ke		COUNTY weld	STATE CO	DATE 11-18-13	
CHARGE TO CURR 120		WELL LOCATION SEC. 6 TWP. 10 N RANGE 59 W		CONTRACTOR B o l l	
		DELIVERED TO 124 + 107		LOCATION 1 Shop	CODE
		SHIPPED VIA 3102 - 3206		LOCATION 2 124 - 107	CODE
		TYPE AND PURPOSE OF JOB P + A		LOCATION 3 Shop	CODE
PRICE				WELL TYPE Gas	CODE

PRICE REFERENCE	DESCRIPTION	UNITS		UNIT PRICE	AMOUNT
		QTY.	MEAS.		
	Pump charge	1	ea	3000 <sup>00</sup>	3000 <sup>00</sup>
	Grout	952	SKS	22 <sup>75</sup>	21658 <sup>00</sup>
	Datta Arc	1	ea	225 <sup>00</sup>	225 <sup>00</sup>
	millage 150 Per mile	79.5	ea	119.25	119 25
	millage 400 Per mile	79.5	ea	318 <sup>00</sup>	636 <sup>00</sup>
	Torn Inspection	1	ea	500 <sup>00</sup>	500 <sup>00</sup>
	wait time		hr	250 <sup>00</sup>	

DRLS ☐ PROD ☐ COMP ☒ WG ☐

Well: EHMKE 1 P-4 AMT \$ 26138<sup>25</sup>

AFF: 313414 Code: 170-110

Description: CEMENT WELL

Signature: Kurt Williams

Total Weight	Loaded Miles	Ton
--------------	--------------	-----

If this account is not paid within 30 days of Invoice date a FINANCE CHARGE will be made. Computed at a single monthly rate of 1 1/2% which is equal to an ANNUAL PERCENTAGE RATE OF 18%.

## TAX REFERENCES

**"TAXES WILL BE ADDED AT CORPORATE OFFICE"**

**SUB TOTAL**

TAX

TOTAL

**SUBJECT TO CORRECTION**

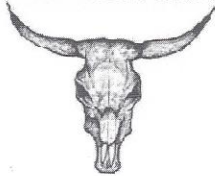
Customer or His Agent

Bison Oil Well Cementing, Inc. Representative

Customers hereby acknowledges and specifically agrees to the terms and conditions on this work order, including, without limitation, the provisions on the reverse side hereof which include the release and indemnity.

# BISON OIL WELL CEMENTING, INC.

1547 Gaylord Street  
Denver, Colorado 80206  
Phone: 303-296-3010  
Fax: 303-298-8143  
E-mail: bisonoil1@qwestoffice.net



INVOICE #  
LOCATION  
FOREMAN

12524  
124+107  
monte

## TREATMENT REPORT

DATE	WELL NAME	SECTION	TWP	RGE	COUNTY
11-18-13	EHMKE well 1	6	10N	59W	Weld
BILL TO	CONSULTANT				
Carrizo	Bill Pitts				
OWNER	RIG NAME & NUMBER				
	select 6				
MAILING ADDRESS	DISTANCE TO LOCATION		UNITS ON LOCATION		
	79.1		3102 - 3206		
CITY	TIME REQUESTED		TIME ARRIVED ON LOCATION		
	930 Pm		830 Pm		
STATE, ZIP	TIME LEFT LOCATION				
	930 Pm				

### WELL DATA

HOLE SIZE	TUBING SIZE	PERFORATIONS
	27/8	
TOTAL DEPTH	TUBING DEPTH	SHOTS/FT
	6586.19	
CASING SIZE	TUBING WEIGHT	OPEN HOLE
	6.0	
CASING DEPTH	TUBING CONDITION	TREATMENT VIA
	Good	
CASING WEIGHT	PACKER DEPTH	
CASING CONDITION		
Max Rate		
Max Pressure		

### Cement Makeup

Cement Blend	Coneat		
Cement - Specs	lbs	Yield	Water Requirements
	15.2	1.27	5.89
Annulus Factor	Capacity Factor		
.0059			

### TYPE OF TREATMENT

<input type="checkbox"/> Surface Pipe	<input type="checkbox"/> Production	<input type="checkbox"/> Squeeze
<input type="checkbox"/> MISC Pump	<input checked="" type="checkbox"/> P&A	

HYD HHP = RATE X PRESSURE / 40.8

% Excess

BBL to Pit

### DESCRIPTION OF JOB EVENTS

safty meeting MFRU Pressure test Per company man circulate  
5 bbls H2O mlt + Pump 150 SKS displace 39 bbls  
2nd mlt + Pump to surface pull Pipe + top off 1075 ft  
3rd mlt + Pump to surface 520-PT

X John Williams  
Authorization To Proceed

WSS  
Title

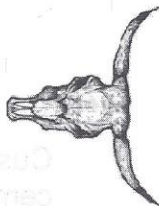
X 11-18-13  
Date

Customers hereby acknowledges and specifically agrees to the terms and conditions on this work order, including, without limitation, the provisions on the reverse side hereof which include the release and indemnity.



# BISON OIL WELL CEMENTING, INC.

1547 Gaylord Street  
Denver, Colorado 80206  
Phone: 303-296-3010  
Fax: 303-298-8143  
E-mail: bisonoil1@qwestoffice.net



INVOICE #  
LOCATION  
FOREMAN

12524  
124-107  
moutte

Treatment Report Page 2

## DESCRIPTION OF JOB EVENTS

Safety Meeting	12:05 PM	Displace 1			Displace 2			Displace 3			Displace 4			Displace 5		
MIRU	900	BBLS	Time	PSI	BBLS	Time	PSI	BBLS	Time	PSI	BBLS	Time	PSI	BBLS	Time	PSI
CIRCULATE Drop Plug	542	0	557	360	0	1240	160	0			0			0		
		10	557	360	<del>1240</del>	1241	160	10			10			10		
		20	600	610	20			20			20			20		
		30	603	980	30			30			30			30		
		<del>3/40</del>	<del>605</del>	1380	40			40			40			40		
M & P		50			50			50			50			50		
	Time	Sacks	60			60			60			60			60	
947-556	150	70			70			70			70			70		
1205-1240	530	80			80			80			80			80		
<del>740-753</del>	272	90			90			90			90			90		
		100			100			100			100			100		
		110			110			110			110			110		
15T		120			120			120			120			120		
m 1x 21		130			130			130			130			130		
slurry 33.92		140			140			140			140			140		
2nd m 1x 24.3		150			150			150			150			150		
slurry 19.87																

Notes:

circulate 5 bbls Ahead m 1x 20 up 150 sks cement displace 39 bbls 420  
m 1x 20 up 530 sks pull out of hole wait tag cement  
m 1x 20 up 272 sks to surface displace 1/2 bbl

1ST 150 sks deep 39 bbls 420  
2nd 530 sks  
3rd 272 sks

X Kurt Cellars  
Work Performed

X WSS  
Title

X 17-18-13  
Date



Bison Oil Well Cementing, Inc  
1738 Wynkoop St., Ste. 102  
Denver, CO 80202  
303-296-3010  
www.Bisonoilwell.com

### Cementing Customer Satisfaction Survey

Service Date 11-18-13 Invoice Number 12824  
Invoice Amount \_\_\_\_\_ Well Permit Number \_\_\_\_\_  
Well Name EA make 1 Well Type Gas  
Well Location 1242107 Well Number 1  
County Weld Lease \_\_\_\_\_  
SEC/TWP/RNG 6 10N 54W Job Type P + A  
State CO Company Name COW 120  
Supervisor Name monte Customer Representative Bill  
Customer Phone Number \_\_\_\_\_  
Employee Name \_\_\_\_\_ Exposure Hours (Per Employee) \_\_\_\_\_

mark  
feff

25  
25

Total Exposure Hours 50

Did we encounter any problems on this job? Yes / No

### To Be Completed By Customer

#### Rating/Description

- 5 - Superior Performance ( Established new quality / performance standards )
- 4 - Exceeded Expectations ( Provided more than what was required / expected )
- 3 - Met Expectations ( Did what was expected )
- 2 - Below Expectations ( Job problems / failures occurred [ \* Recovery made ] )
- 1 - Poor Performance ( Job problems / failures occurred [ \* Some recovery made ] )

\* Recovery: resolved issue(s) on jobsite in a timely and professional manner

#### Opportunity

- Best Practices
- Potential Best Practice
- Prevention/Improvement

#### RATING / CATEGORY

- \_\_\_\_\_ Personnel -
- \_\_\_\_\_ Equipment -
- \_\_\_\_\_ Job Design -
- \_\_\_\_\_ Product / Material -
- \_\_\_\_\_ Health & Safety -
- \_\_\_\_\_ Environmental -
- \_\_\_\_\_ Timeliness -
- \_\_\_\_\_ Condition / Appearance -
- \_\_\_\_\_ Communication -
- \_\_\_\_\_ Improvement -

#### CUSTOMER SATISFACTION RATING

- Did our personnel perform to your satisfaction ?
- Did our equipment perform to your satisfaction ?
- Did we perform the job to the agreed upon design ?
- Did our products and materials perform as you expected ?
- Did we perform in a safe and careful manner ( Pre / post mtgs, PPE, TSMR, etc.. ) ?
- Did we perform in an environmentally sound manner ( Spills, leaks, cleanup, etc.. ) ?
- Was job performed as scheduled (On time to site, accessible to customer, completed when expected)?
- Did the equipment condition and appearance meet your expectation?
- How well did our personnel communicate during mobilization, rig up, and job execution?
- What can we do to improve our service?

#### Please Circle:

- Yes / No - Did an accident or injury occur?
- Yes / No - Did an injury requiring medical treatment occur?
- Yes / No - Did a first-aid injury occur?
- Yes / No - Did a vehicle accident occur?
- Yes / No - Was a post-job safety meeting held?

Additional Comments:

#### Please Circle:

- Yes / No - Was a pre-job safety meeting held?
- Yes / No - Was a job safety analysis completed?
- Yes / No - Were emergency services discussed?
- Yes / No - Did environmental incident occur?
- Yes / No - Did any near misses occur?

THE INFORMATION HEREIN IS CORRECT -

Mark Williams

Customer Representative's Signature

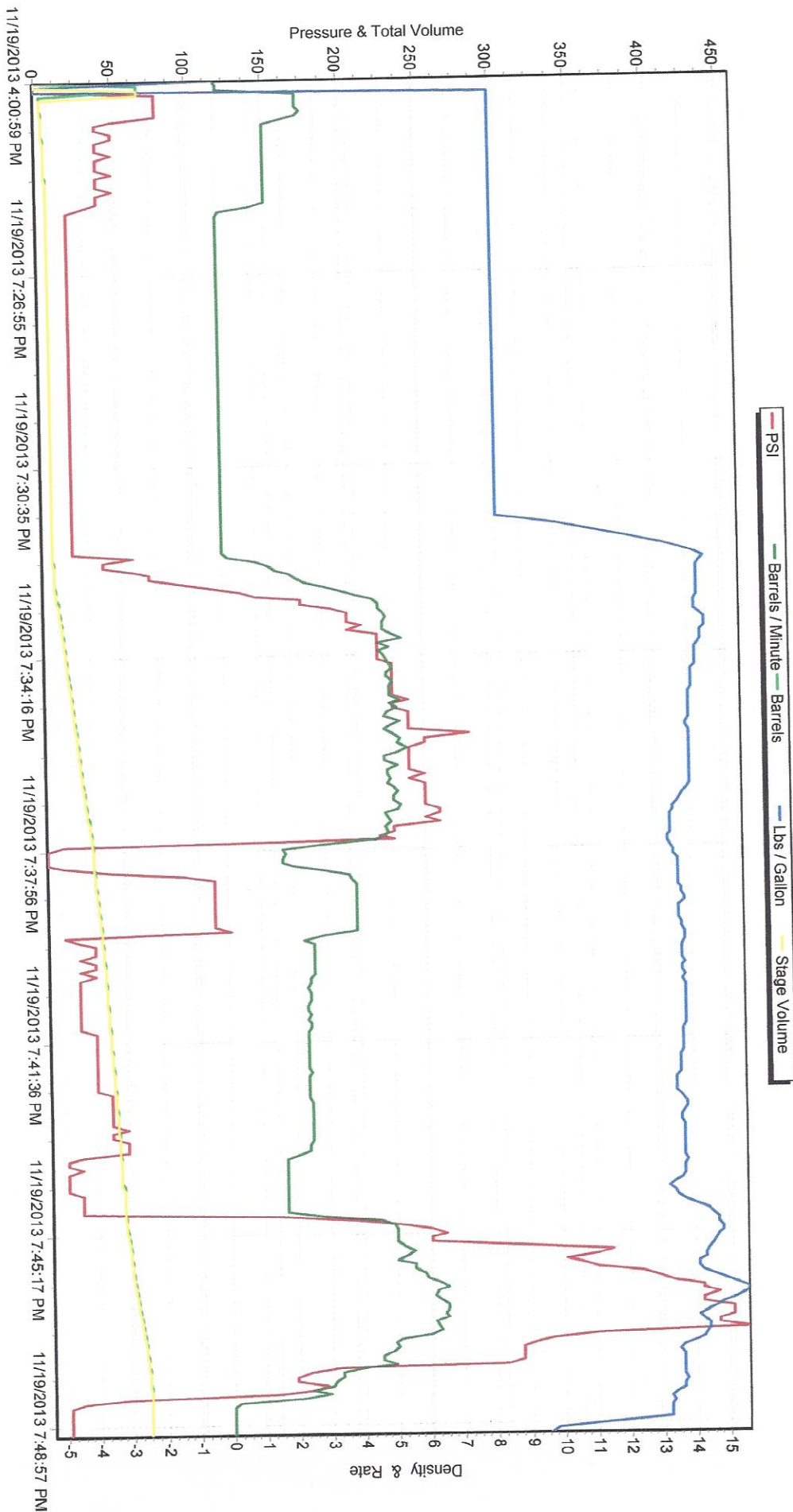
11-18-13

Date

Any additional Customer Comments or HSE concerns should be described on the back of this form



# M/D TOTCO 2000 SERIES



## BISON OILWELL CEMENTING JOB SAFETY ANALYSIS WORKSHEET



ASK: Plug and Abandon		CEMENTER/SUPERVISOR: monte bedeaux		PAGE 1	OF 3
NAME: ehmk 1		RIG # select 6	LOCATION: 124-107	DATE: 11-18-13	
ATOR: Carrizo		CONSULTANT: bill		INVOICE # 1252 4	
EQUIPED: <input checked="" type="checkbox"/> Hard Hat <input checked="" type="checkbox"/> FR Coveralls <input checked="" type="checkbox"/> ADDITIONAL PPE (based on job specific hazards) <input type="checkbox"/> Goggles <input type="checkbox"/> Faceshield <input type="checkbox"/> Air Purifying Respirator <input checked="" type="checkbox"/> Safety Glasses <input checked="" type="checkbox"/> Reflective Vest <input type="checkbox"/> Chemical Resistant Gloves <input type="checkbox"/> Personal H2S Monitor <input type="checkbox"/> Supplied Air Respirator <input checked="" type="checkbox"/> Steel Toe Boots <input type="checkbox"/> Chemical Resistant Clothing <input type="checkbox"/> Personal Methane Monitor <input checked="" type="checkbox"/> Impact Gloves					
JOB STEPS	POTENTIAL HAZARDS	RECOMMENDED ACTION OR PROCEDURE		REVIEWED BY	
Review JSA	Misunderstanding	Clarify job and associated hazards and safety concerns		MB	
Induct pre job safety meeting	Misunderstanding	- Hold safety meeting with all personnel on location, ensure everyone pays attention to ensure they understand their role and responsibility during the job - Review treatment report with consultant and attain signature for authorization to proceed - Identify and address short service employees (SSE) who are on location - Verify method of relaying hand signals to rig crew for shutting down mud pump			
Drive trucks in and rig up equipment	Other traffic on location, overhead lines, pinch points, heavy lifting, slips/falls	- Coordinate with well site supervisor for directions on where and when to park the equipment - All Bison crew members walk the location prior to driving in to access specific hazards - Utilize spotters when trucks are in motion - Establish buffer zone around equipment utilizing cones and caution tape - Cementer follows up to ensure connections are secure - Lift with your legs and use teamwork when rigging up - Utilize reflective vests and wands to increase visibility at night - Deploy spill berms and buckets - Verify connections on mudline for compatibility			
Use hose to rig floor	Overhead work, improper hook up/load not properly secured, miscommunication between ground personnel and the crane/tugger operator	- Inspect chains, slings, hooks prior to lift - Ensure line of sight with crane/tugger operator is maintained throughout the lift and hand signals are clarified before the lift. - Ensure no personnel are under suspended loads - Utilize tag line			
Attach swage to tubing/Connect to swage on pipe	Connections/equipment failing under pressure, spills, slips and falls	- Insure swage has proper pressure rating for the job and falls within the parameters of the <i>Bison Oilwell Cementing Iron Inspection Program</i> - Verify the compatibility of the connections on a swage/pin provided by the rig - Minimize number of people on rig floor, utilize Bison personnel to attach cement lines - Be aware of surroundings when swinging a hammer			
Pressure test lines	Test to: PSI- 500 Maximum pressure allowed for job: PSI-2000	Equipment failing under high pressures	- Ensure rig floor is clear and personnel are away from hoses prior to test - Establish buffer area around high pressure hoses - Lines are checked from a distance and using pressure gauges - Cementer ensures pressure gauges are working properly	Pressure relief valve set to: PSI-2000 Max. pump pressure: PSI- 10000	

# BISON OILWELL CEMENTING JOB SAFETY ANALYSIS WORKSHEET



mp Spacer/Mix and Pump tent	Serious injury from high pressure line failure or catastrophic equipment failure. Burns or skin irritation from splashing cement, uncontrolled spills	-Pressure test prior to job, utilize heavy duty hose hobbles and pressure relief valve -Keep rig floor and buffer area clear while pumping -Utilize proper PPE -Have access to water to rinse affected skin -Deploy spill berms and buckets	NB
placement	Unexpected pressure associated with resuming of pumping, serious injury from high pressure line failure catastrophic equipment failure, spills, overpressure of mudlines	-Ensure rig floor remains clear and non-essential personnel stay clear from buffer area -Pump operator monitors pump pressure constantly -Utilize proper PPE -During displacement ensure one mudline valve is always open -Review method of relaying hand signals to rig crew to engage/disengage mud pumps	
IT STEPS 7 AND 8 AS REQUIRED			
sh up / rig down	Splashing cement slurry, heavy lifting, pinch points, unsecured hoses	-Utilize stakes or portable tank manifold to secure hoses -Use proper lifting technique (2 man lift, lift with legs, plan your route)	
part location	Other traffic and personnel and location, overhead lines	-All Bison crew member walk the planned exit route to access possible obstacles and hazards -Utilize spotters while backing	
eneral Precautions/Stop Work	-If you see a leaking connection, notify the cementer. Do not attempt to hammer up a leaking connection as there may be pressure on the lines. -Any person on location, regardless of their position or experience level has the authority and responsibility to stop the job if they witness an unsafe act or condition.		
R HAZARDS SPECIFIC TO LOCATION OR COMMENT NOT ADDRESSED ABOVE:			
NATED EMERGENCY MUSTER AREA: access rd	NEAREST EMERGENCY MEDICAL FACILITY (OTHER THAN 911): sterling		
COUNT- 11			



Signature and Company	
<i>Kurt Wilhoit</i>	SEC
<i>Laird</i>	Seiwicker
<i>Steve Baker</i>	SAS
<i>Clay Bomer</i>	SES
<i>Steve Connor</i>	SES
<i>Dionicio Grosse</i>	SES
<i>Frank Thompson</i>	SES
<i>Spencer</i>	
<i>Andy Smith</i>	Bison
<i>Geoff Kneppel-Bison</i>	
<i>Monte Butler</i>	





**BISON**  
Oil Well Cementing Inc.

## PRE TRIP CEMENT CALL OUT SHEET

INVOICE # 12524

DATE/TIME 11/8/43

WELL NAME Ehmkd 1

OPERATOR Kirk / 1311

CUSTOMER Carri 20

LOCATION/RIG 124+107 select 6

DELIVERED TO 124+107

### PRE CHECK CALL OUT

CHECK ITEMS	Supervisor Initials	Other Initials	BULK TRUCK DRIVER	Supervisor Initials	Other Initials
DRY SAMPLE #	mb	jk	VACUUM BREAKER PORT CLEANED & INSPECTED & SPARE ON TRUCK	mb	mb
REQUIRED CEMENT CONNECTIONS	mb	jk	WATER JET AT MIX HEAD REMOVED, INSPECTED & CLEANED	mb	mb
TYPE OF CEMENT	Good Neat	mb	CEMENTING HEAD INSPECTED & CLEANED		mb
# OF LBS/SACKS	full	mb	MIX TUB INSPECTED & CLEANED	mb	mb
FLOAT EQUIPMENT			CENTRIFUGALS GREASED, TIGHTENED & INSPECTED	mb	mb
BEGINNING FUEL	full	jk	DECK MOTORS STARTED	mb	mb
STATING MILEAGE	305870	jk	VERIFY ALL AIR VALVES ARE FUNCTIONAL	mb	mb
PERSONAL PROTECTIVE EQUIPMENT	mb	jk	VERIFY ALL VALVES ARE FUNCTIONAL ON BULK TRUCK	mb	jk
DRIVING DIRECTIONS	mb	jk	VERIFY BERMS ARE ON BULK TRUCK	mb	jk
DRIVERS LOGS UPDATED PRIOR TO LEAVING YARD	mb	jk	VERIFY SPARE CEMENT HEAD IS ON BULK TRUCK		jk
TRUCK PRE TRIP COMPLETED	mb	jk	VERIFY 1" TUBING IS ON BULK TRUCK	mb	jk
ROCK CATCHERS REMOVED & CLEANED	mb	mb	VERIFY 1" IS ADEQUATELY SECURED ON BULK TRUCK	mb	jk
VACUUM BREAKER REMOVED & CLEANED	mb	mb	CHECK FOR ADEQUATE SUPPLY OF KCL, DYE AND DEFOAMER	mb	
VERIFY CORRECT POP OFF PIN IN PLACE	mb	mb	TOP OFF FUEL IN TRUCKS POST TRIP	mb	jk
VERIFY PRESSURE TRANSDUCERS ARE CLEAN OF CEMENT	mb	mb	VERIFY PARKING METER GAUGE IS ON TRUCK		
CLEAN TRUCKS	mb	jk	DRAIN AIR TANKS	mb	jk
TIGHTEN PACKING NUTS ON PLUNGERS	mb	mb			

### CEMENT HEAD CHECK LIST

	Supervisor Initials	Other Initials
THREADS		
VALVES		
PIN		

COMMENTS: