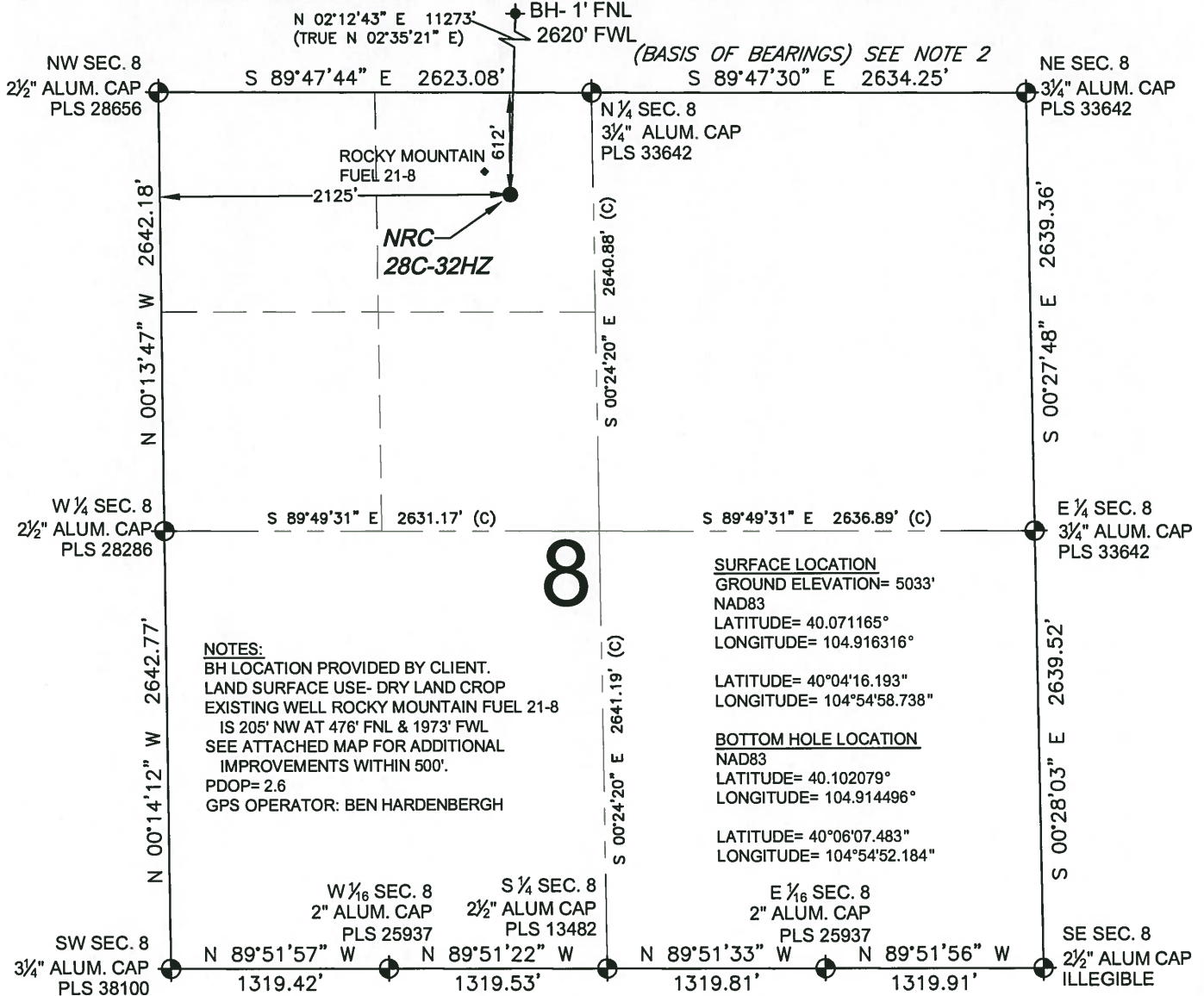


WELL LOCATION CERTIFICATE: NRC 28C-32HZ

SECTION 8, TOWNSHIP 1 NORTH, RANGE 67 WEST, 6TH P.M.



SURFACE LOCATION
 GROUND ELEVATION= 5033'
 NAD83
 LATITUDE= 40.071165°
 LONGITUDE= 104.916316°

LATITUDE= 40°04'16.193"
 LONGITUDE= 104°54'58.738"

BOTTOM HOLE LOCATION
 NAD83
 LATITUDE= 40.102079°
 LONGITUDE= 104.914496°

LATITUDE= 40°06'07.483"
 LONGITUDE= 104°54'52.184"

NOTES:
 BH LOCATION PROVIDED BY CLIENT.
 LAND SURFACE USE- DRY LAND CROP
 EXISTING WELL ROCKY MOUNTAIN FUEL 21-8
 IS 205' NW AT 476' FNL & 1973' FWL
 SEE ATTACHED MAP FOR ADDITIONAL
 IMPROVEMENTS WITHIN 500'.
 PDOP= 2.6
 GPS OPERATOR: BEN HARDENBERGH

WELL NRC 28C-32HZ TO BE LOCATED 612' FNL AND 2125' FWL

LEGEND

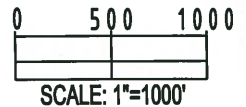
- ⊕ = EXISTING MONUMENT
- ⬠ = PROPOSED WELL
- BH = BOTTOM HOLE
- ◆ = BOTTOM HOLE
- ◆ = EXISTING WELL

NOTES:

- THIS FIELD SURVEY CONFORMS TO THE MINIMUM STANDARDS SET BY THE C.O.G.C.C., RULE NO. 215
- BEARINGS AND DISTANCE SHOWN HEREON ARE GRID AND BASED ON THE COLORADO STATE PLANE COORDINATE SYSTEM, NAD 83/2011 BETWEEN MONUMENTS AS LABELED HEREON AND ELEVATIONS SHOWN ARE NAVD 88, AS DERIVED BY GPS OBSERVATIONS.
- GRID DISTANCES ARE SHOWN, AS MEASURED IN THE FIELD, WITH TIES TO WELLS MEASURED PERPENDICULAR TO SECTION LINES.

I, BRADLEY L. LAMAN, A LICENSED PROFESSIONAL LAND SURVEYOR IN THE STATE OF COLORADO DO HEREBY CERTIFY TO **KERR-MCGEE OIL & GAS ONSHORE LP**, THAT THE SURVEY AND WELL LOCATION CERTIFICATE SHOWN HEREON WERE DONE BY ME OR UNDER MY DIRECT SUPERVISION AND THAT THE DRAWING SHOWN HEREON ACCURATELY DEPICTS THE PROPOSED LOCATION OF THE WELL. THIS CERTIFICATE DOES NOT REPRESENT A LAND SURVEY PLAT OR IMPROVEMENT SURVEY PLAT AS DEFINED BY C.R.S. 38-51-102 AND CANNOT BE RELIED UPON TO DETERMINE OWNERSHIP.

BRADLEY L. LAMAN, PLS 38345
 COLORADO LICENSED PROFESSIONAL LAND SURVEYOR
 FOR AND ON BEHALF OF P.F.S., LLC



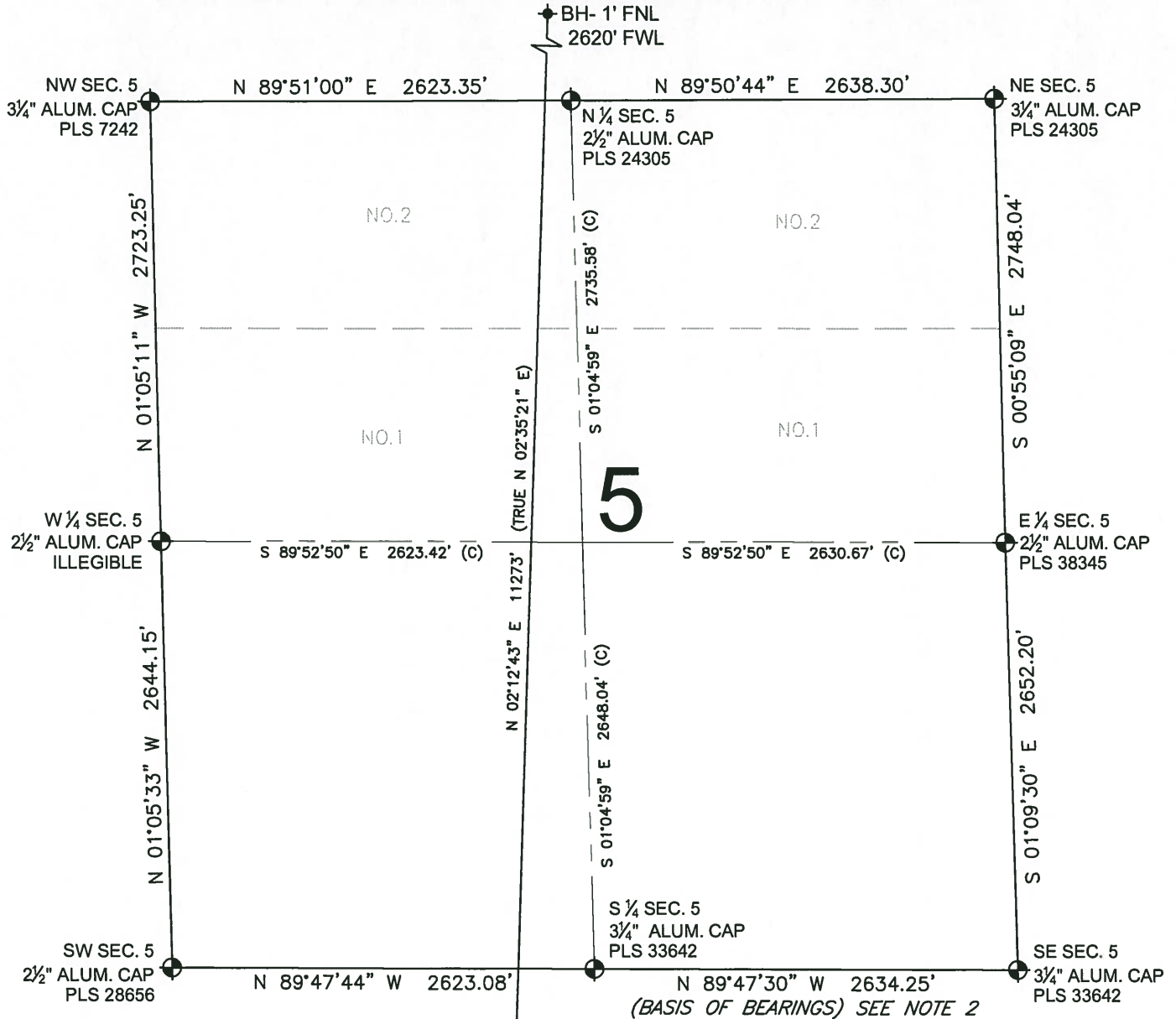
SHEET 1 OF 3

PREPARED BY: Petroleum Field Services, LLC 1801 W. 13th Ave. Denver, CO 80224	FIELD DATE: 10-30-13	SURFACE LOCATION: NE 1/4, NW 1/4, SEC. 8, T1N, R67W, 6TH P.M.
	DRAWING DATE: 11-06-13	WELD COUNTY, COLORADO
BY: SMF	CHECKED: JAH	

NOTICE: ACCORDING TO COLORADO LAW YOU MUST COMMENCE ANY LEGAL ACTION BASED UPON ANY DEFECT IN THIS SURVEY WITHIN THREE YEARS AFTER YOU FIRST DISCOVER SUCH DEFECT. IN NO EVENT MAY ANY ACTION BASED UPON ANY DEFECT IN THIS SURVEY BE COMMENCED MORE THAN TEN YEARS FROM THIS SAID DATE OF THIS CERTIFICATION SHOWN HEREON.

WELL LOCATION CERTIFICATE: NRC 28C-32HZ

SECTION 5, TOWNSHIP 1 NORTH, RANGE 67 WEST, 6TH P.M.



**NRC
28C-32HZ**

LEGEND

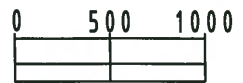
- ⊕ = EXISTING MONUMENT
- ⊙ = PROPOSED WELL
- BH = BOTTOM HOLE
- ⊕ = BOTTOM HOLE
- ◆ = EXISTING WELL

NOTES:

1. THIS FIELD SURVEY CONFORMS TO THE MINIMUM STANDARDS SET BY THE C.O.G.C.C., RULE NO. 215
2. BEARINGS AND DISTANCE SHOWN HEREON ARE GRID AND BASED ON THE COLORADO STATE PLANE COORDINATE SYSTEM, NAD 83/2011 BETWEEN MONUMENTS AS LABELED HEREON AND ELEVATIONS SHOWN ARE NAVD 88, AS DERIVED BY GPS OBSERVATIONS.
3. GRID DISTANCES ARE SHOWN, AS MEASURED IN THE FIELD, WITH TIES TO WELLS MEASURED PERPENDICULAR TO SECTION LINES.



BRADLEY L. LAMAN, PLS 38345
 COLORADO LICENSED PROFESSIONAL LAND SURVEYOR
 FOR AND ON BEHALF OF P.F.S., LLC



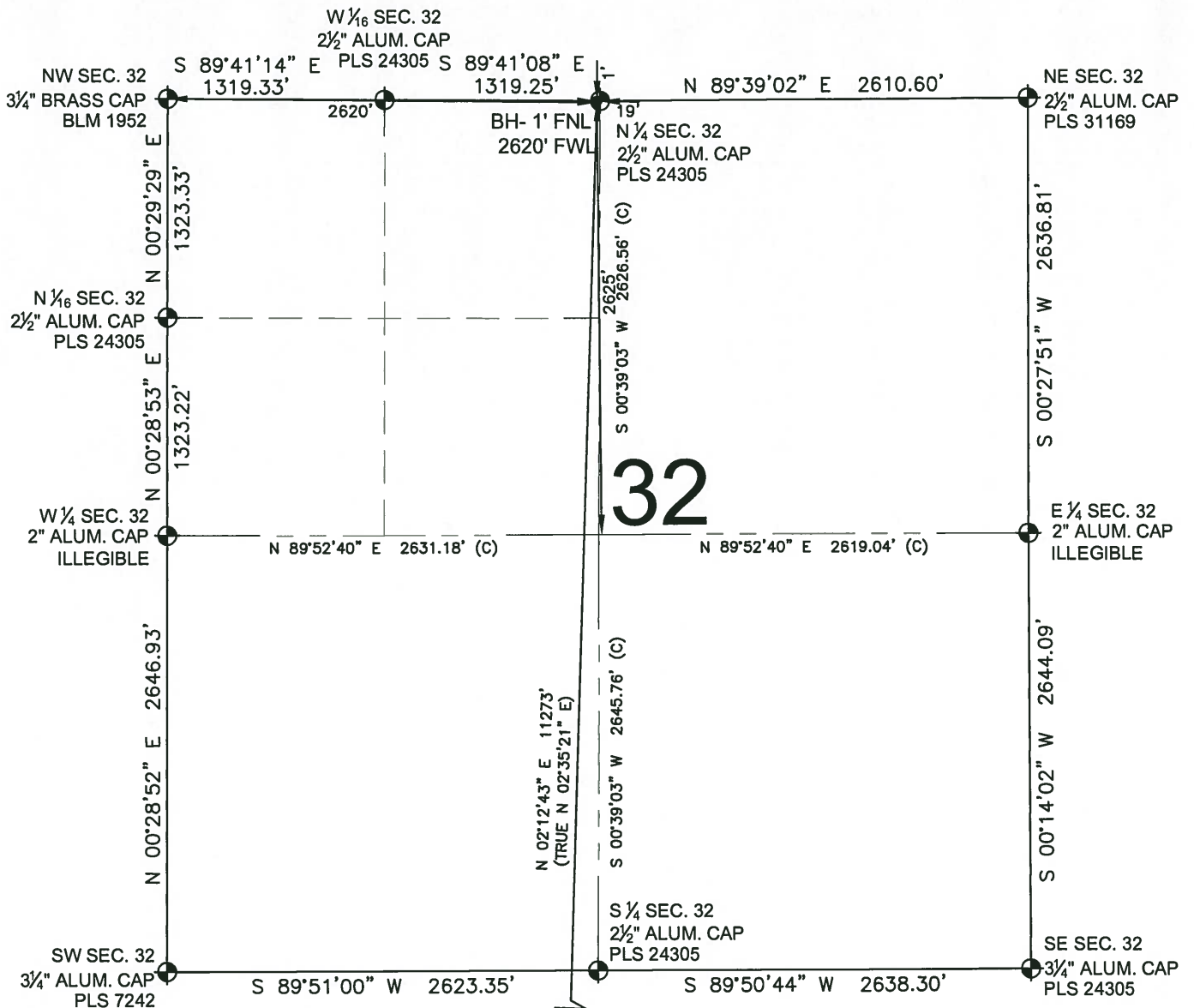
SHEET 2 OF 3

PREPARED BY: Petroleum Field Services, LLC 1801 W. 13th Ave. Denver, CO 80204	FIELD DATE: 10-30-13 DRAWING DATE: 11-06-13 BY: SMF CHECKED: JAH	SURFACE LOCATION: NE 1/4, NW 1/4, SEC. 8, T1N, R67W, 6TH P.M. WELD COUNTY, COLORADO
--	---	--

NOTICE: ACCORDING TO COLORADO LAW YOU MUST COMMENCE ANY LEGAL ACTION BASED UPON ANY DEFECT IN THIS SURVEY WITHIN THREE YEARS AFTER YOU FIRST DISCOVER SUCH DEFECT. IN NO EVENT MAY ANY ACTION BASED UPON ANY DEFECT IN THIS SURVEY BE COMMENCED MORE THAN TEN YEARS FROM THIS SAID DATE OF THIS CERTIFICATION SHOWN HEREON.

WELL LOCATION CERTIFICATE: NRC 28C-32HZ

SECTION 32, TOWNSHIP 2 NORTH, RANGE 67 WEST, 6TH P.M.



LEGEND

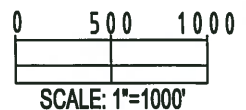
- ⊕ = EXISTING MONUMENT
- ⊙ = PROPOSED WELL
- ⬥ = EXISTING WELL
- ⬇ = BOTTOM HOLE
- BH = BOTTOM HOLE

NOTES:

1. THIS FIELD SURVEY CONFORMS TO THE MINIMUM STANDARDS SET BY THE C.O.G.C.C., RULE NO. 215
2. BEARINGS AND DISTANCE SHOWN HEREON ARE GRID AND BASED ON THE COLORADO STATE PLANE COORDINATE SYSTEM, NAD 83/2011 BETWEEN MONUMENTS AS LABELED HEREON AND ELEVATIONS SHOWN ARE NAVD 88, AS DERIVED BY GPS OBSERVATIONS.
3. GRID DISTANCES ARE SHOWN, AS MEASURED IN THE FIELD, WITH TIES TO WELLS MEASURED PERPENDICULAR TO SECTION LINES.



BRADLEY L. LAMAN, PLS 38345
COLORADO LICENSED PROFESSIONAL LAND SURVEYOR
FOR AND ON BEHALF OF P.F.S., LLC



SHEET 3 OF 3

PREPARED BY: PFS Petroleum Field Services, LLC 1801 W. 13th Ave. Denver, CO 80204	FIELD DATE: 10-30-13 DRAWING DATE: 11-06-13 BY: SMF CHECKED: JAH	SURFACE LOCATION: NE 1/4, NW 1/4, SEC. 8, T1N, R67W, 6TH P.M. WELD COUNTY, COLORADO
--	---	--

NOTICE: ACCORDING TO COLORADO LAW YOU MUST COMMENCE ANY LEGAL ACTION BASED UPON ANY DEFECT IN THIS SURVEY WITHIN THREE YEARS AFTER YOU FIRST DISCOVER SUCH DEFECT. IN NO EVENT MAY ANY ACTION BASED UPON ANY DEFECT IN THIS SURVEY BE COMMENCED MORE THAN TEN YEARS FROM THIS SAID DATE OF THIS CERTIFICATION SHOWN HEREON.