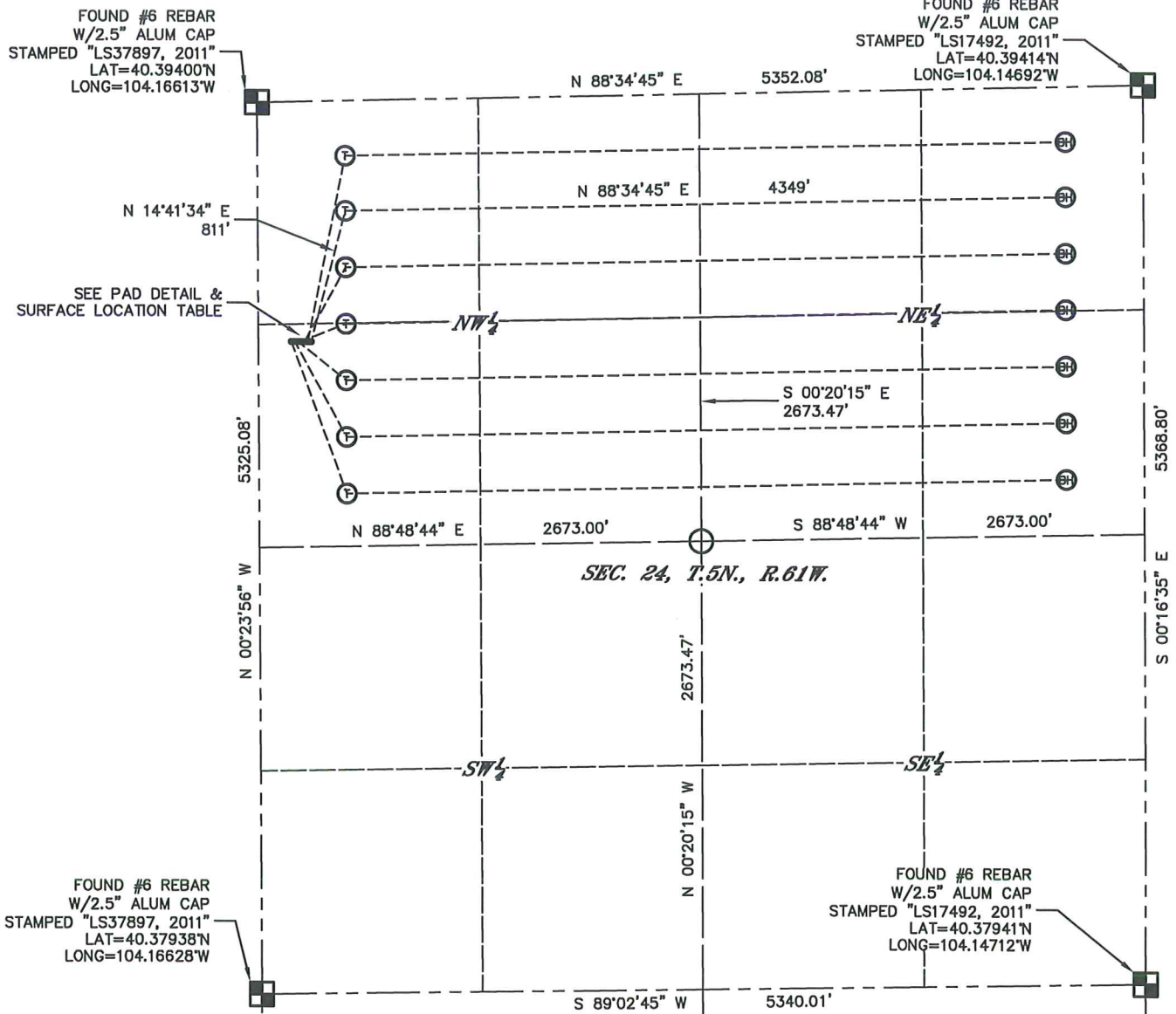


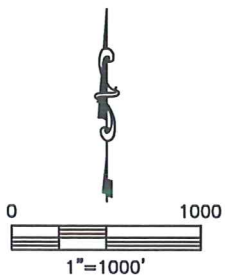
# MULTI-WELL PLAN (1 of 2)

## PRONGHORN B-24 PAD

SECTION: 24  
TOWNSHIP: 5N  
RANGE: 61W



- PRONGHORN 24PH6 20' OG
  - PRONGHORN 24PH5 20' OG
  - PRONGHORN 24PH4 20' OG
  - PRONGHORN 24PH3 20' OG
  - PRONGHORN 24PH2 20' OG
  - PRONGHORN 24PH1 20' OG
  - PRONGHORN 11-41-24HNB 20' OG
- TO TARGET 1



PAD DETAIL  
N.T.S.

MULTI-WELL PLAN (2 of 2)

PRONGHORN B-24 PAD

SECTION: 24  
TOWNSHIP: 5N  
RANGE: 61W

SURFACE LOCATIONS

(EAST TO WEST)

PRONGHORN 11-41-24HNB  
1439' FNL  
320' FWL  
LAT=40.39006°N  
LONG=104.16502°W

PRONGHORN 24PH1  
1438' FNL  
300' FWL  
LAT=40.39006°N  
LONG=104.16510°W

PRONGHORN 24PH2  
1438' FNL  
280' FWL  
LAT=40.39006°N  
LONG=104.16517°W

PRONGHORN 24PH3  
1437' FNL  
260' FWL  
LAT=40.39006°N  
LONG=104.16524°W

PRONGHORN 24PH4  
1437' FNL  
240' FWL  
LAT=40.39006°N  
LONG=104.16531°W

PRONGHORN 24PH5  
1436' FNL  
220' FWL  
LAT=40.39006°N  
LONG=104.16538°W

PRONGHORN 24PH6  
1436' FNL  
200' FWL  
LAT=40.39006°N  
LONG=104.16545°W

TARGET 1 LOCATIONS

PRONGHORN 11-41-24HNB  
660' FNL  
531' FWL  
LAT=40.39220°N  
LONG=104.16424°W

BOTTOM HOLE LOCATIONS

PRONGHORN 11-41-24HNB  
660' FNL  
470' FEL  
LAT=40.39231°N  
LONG=104.14863°W