

# **BILL BARRETT CORP**

**WELD COUNTY, COLORADO  
Fiducial 6-62-34\_35 NWSW Pad  
Fiducial 6-62-34-4841BH2**

**Wellbore #1**

**Plan: Design #1**

## **Standard Planning Report**

**19 March, 2014**



**Bill Barrett Corporation**

## COMPANY DETAILS: BILL BARRETT CORP

Calculation Method: Minimum Curvature  
Error System: ISCWSA  
Scan Method: Closest Approach 3D  
Error Surface: Elliptical Conic  
Warning Method: Error Ratio

## REFERENCE INFORMATION

Co-ordinate (N/E) Reference: Well Fiducial 6-62-34-4841BH2, True North  
Vertical (TVD) Reference: KB @ 4707.0ft (Original Well Elev)  
Section (VS) Reference: Slot - (0.0N, 0.0E)  
Measured Depth Reference: KB @ 4707.0ft (Original Well Elev)  
Calculation Method: Minimum Curvature

## WELL DETAILS: Fiducial 6-62-34-4841BH2

+N/-S +E/-W Northing Easting Latitude Longitude  
0.0 0.0 1406404.12 3329153.1840° 26' 34.641 N 104° 19' 2.572 W

## SECTION DETAILS

Sec	MD	Inc	Azi	TVD	+N/-S	+E/-W	DLeg	TFace	VSec	Target
1	0.0	0.00	0.00	0.0	0.0	0.0	0.00	0.00	0.0	
2	1000.0	0.00	0.00	1000.0	0.0	0.0	0.00	0.00	0.0	
3	1319.8	6.40	269.56	1319.1	-0.1	-17.8	2.00	269.56	-17.8	
4	5313.0	6.40	269.56	5287.4	-3.6	-462.6	0.00	0.00	-462.6	
5	5632.7	0.00	89.56	5606.5	-3.7	-480.4	2.00	180.00	-480.4	
6	5882.7	0.00	89.56	5856.5	-3.7	-480.4	0.00	89.56	-480.4	
7	6635.7	90.36	89.56	6334.0	0.0	0.0	12.00	89.56	0.0	F 34-4841BH2 LP
8	16270.4	90.36	89.56	6274.0	74.7	9634.2	0.00	0.00	9634.5	F 34-4841BH2 PBHL

## PROJECT DETAILS: WELD COUNTY, COLORADO

Geodetic System: US State Plane 1983  
Datum: North American Datum 1983  
Ellipsoid: GRS 1980  
Zone: Colorado Northern Zone

## FORMATION TOP DETAILS

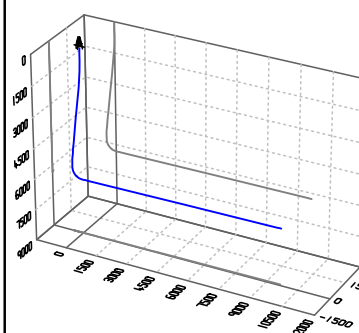
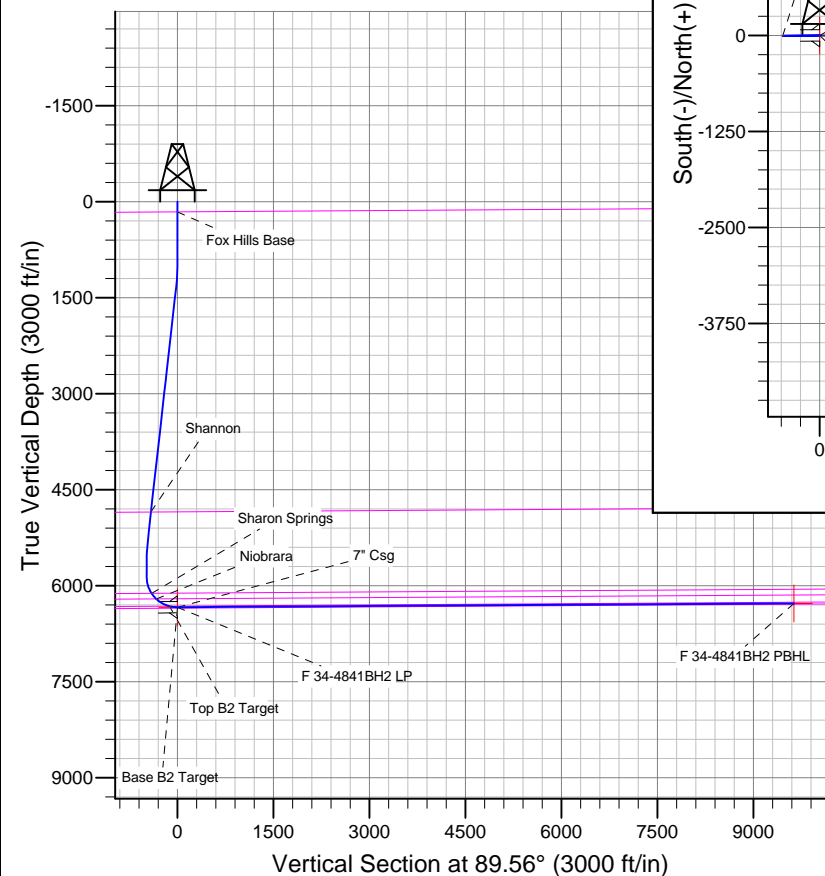
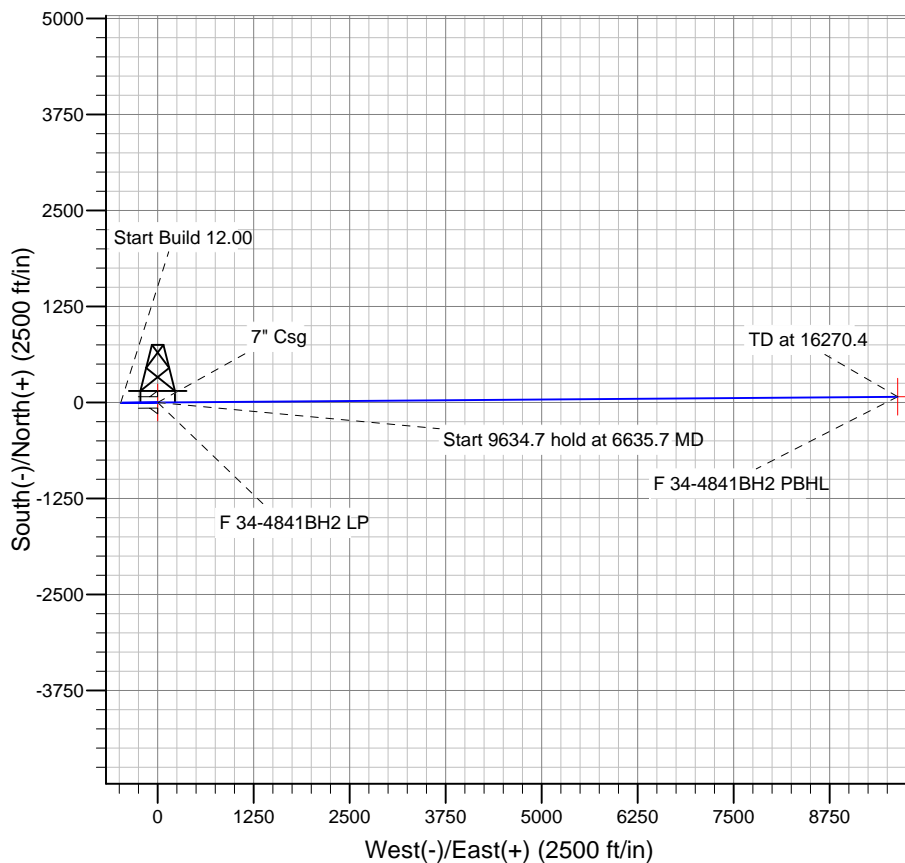
TVDPath	MDPath	Formation
157.0	157.0	Base B2 Target
4845.6	4868.3	Fox Hills Base
6117.5	6158.8	Shannon
6205.1	6273.4	Sharon Springs
6318.8	6511.8	Niobrara
6318.8	6511.8	Top B2 Target

## WELLBORE TARGET DETAILS

Name	TVD	+N/-S	+E/-W	Shape
F 34-4841BH2 PBHL	6274.0	74.7	9634.2	Point
F 34-4841BH2 LP	6334.0	0.0	0.0	Point

## CASING DETAILS

TVD	MD	Name	Size
6334.0	6635.7	7" Csg	7



Azimuths to True North  
Magnetic North: 8.25°

Magnetic Field  
Strength: 52910.4snT  
Dip Angle: 67.06°  
Date: 3/19/2014  
Model: IGRF2010

# Bill Barrett Corp

## Planning Report

<b>Database:</b>	Compass	<b>Local Co-ordinate Reference:</b>	Well Fiducial 6-62-34-4841BH2
<b>Company:</b>	BILL BARRETT CORP	<b>TVD Reference:</b>	KB @ 4707.0ft (Original Well Elev)
<b>Project:</b>	WELD COUNTY, COLORADO	<b>MD Reference:</b>	KB @ 4707.0ft (Original Well Elev)
<b>Site:</b>	Fiducial 6-62-34_35 NWSW Pad	<b>North Reference:</b>	True
<b>Well:</b>	Fiducial 6-62-34-4841BH2	<b>Survey Calculation Method:</b>	Minimum Curvature
<b>Wellbore:</b>	Wellbore #1		
<b>Design:</b>	Design #1		

<b>Project</b>	WELD COUNTY, COLORADO		
<b>Map System:</b>	US State Plane 1983	<b>System Datum:</b>	Mean Sea Level
<b>Geo Datum:</b>	North American Datum 1983		
<b>Map Zone:</b>	Colorado Northern Zone		

Site	Fiducial 6-62-34_35 NWSW Pad				
Site Position:		Northing:	1,406,419.06ft	Latitude:	40° 26' 34.789 N
From:	Lat/Long	Easting:	3,329,152.98ft	Longitude:	104° 19' 2.572 W
Position Uncertainty:	0.0 ft	Slot Radius:	"	Grid Convergence:	0.76 °

Well		Fiducial 6-62-34-4841BH2				
Well Position	+N-S	-14.9 ft	Northing:	1,406,404.12 ft	Latitude:	40° 26' 34.641 N
	+E-W	0.0 ft	Easting:	3,329,153.18 ft	Longitude:	104° 19' 2.572 W
Position Uncertainty		0.0 ft	Wellhead Elevation:	ft	Ground Level:	4,685.0 ft

<b>Wellbore</b>	Wellbore #1				
<b>Magnetics</b>	<b>Model Name</b>	<b>Sample Date</b>	<b>Declination (°)</b>	<b>Dip Angle (°)</b>	<b>Field Strength (nT)</b>
	IGRF2010	3/19/2014	8.25	67.06	52,910

<b>Design</b>	Design #1				
<b>Audit Notes:</b>					
<b>Version:</b>	<b>Phase:</b>	PLAN	<b>Tie On Depth:</b>	0.0	
<b>Vertical Section:</b>	<b>Depth From (TVD) (ft)</b>	<b>+N/-S (ft)</b>	<b>+E/-W (ft)</b>	<b>Direction (°)</b>	
	0.0	0.0	0.0	89.56	

<b>Plan Sections</b>										
Measured Depth (ft)	Inclination (°)	Azimuth (°)	Vertical Depth (ft)	+N/-S (ft)	+E/-W (ft)	Dogleg Rate (°/100ft)	Build Rate (°/100ft)	Turn Rate (°/100ft)	TFO (°)	Target
0.0	0.00	0.00	0.0	0.0	0.0	0.00	0.00	0.00	0.00	
1,000.0	0.00	0.00	1,000.0	0.0	0.0	0.00	0.00	0.00	0.00	
1,319.8	6.40	269.56	1,319.1	-0.1	-17.8	2.00	2.00	0.00	269.56	
5,313.0	6.40	269.56	5,287.4	-3.6	-462.6	0.00	0.00	0.00	0.00	
5,632.7	0.00	89.56	5,606.5	-3.7	-480.4	2.00	-2.00	0.00	180.00	
5,882.7	0.00	89.56	5,856.5	-3.7	-480.4	0.00	0.00	0.00	89.56	
6,635.7	90.36	89.56	6,334.0	0.0	0.0	12.00	12.00	0.00	89.56	F 34-4841BH2 LP
16,270.4	90.36	89.56	6,274.0	74.7	9,634.2	0.00	0.00	0.00	0.00	F 34-4841BH2 PBT

# Bill Barrett Corp

## Planning Report

<b>Database:</b>	Compass	<b>Local Co-ordinate Reference:</b>	Well Fiducial 6-62-34-4841BH2
<b>Company:</b>	BILL BARRETT CORP	<b>TVD Reference:</b>	KB @ 4707.0ft (Original Well Elev)
<b>Project:</b>	WELD COUNTY, COLORADO	<b>MD Reference:</b>	KB @ 4707.0ft (Original Well Elev)
<b>Site:</b>	Fiducial 6-62-34_35 NWSW Pad	<b>North Reference:</b>	True
<b>Well:</b>	Fiducial 6-62-34-4841BH2	<b>Survey Calculation Method:</b>	Minimum Curvature
<b>Wellbore:</b>	Wellbore #1		
<b>Design:</b>	Design #1		

Planned Survey									
Measured Depth (ft)	Inclination (°)	Azimuth (°)	Vertical Depth (ft)	+N/-S (ft)	+E/-W (ft)	Vertical Section (ft)	Dogleg Rate (°/100ft)	Build Rate (°/100ft)	Turn Rate (°/100ft)
0.0	0.00	0.00	0.0	0.0	0.0	0.0	0.00	0.00	0.00
100.0	0.00	0.00	100.0	0.0	0.0	0.0	0.00	0.00	0.00
157.0	0.00	0.00	157.0	0.0	0.0	0.0	0.00	0.00	0.00
Fox Hills Base									
200.0	0.00	0.00	200.0	0.0	0.0	0.0	0.00	0.00	0.00
300.0	0.00	0.00	300.0	0.0	0.0	0.0	0.00	0.00	0.00
400.0	0.00	0.00	400.0	0.0	0.0	0.0	0.00	0.00	0.00
500.0	0.00	0.00	500.0	0.0	0.0	0.0	0.00	0.00	0.00
600.0	0.00	0.00	600.0	0.0	0.0	0.0	0.00	0.00	0.00
700.0	0.00	0.00	700.0	0.0	0.0	0.0	0.00	0.00	0.00
800.0	0.00	0.00	800.0	0.0	0.0	0.0	0.00	0.00	0.00
900.0	0.00	0.00	900.0	0.0	0.0	0.0	0.00	0.00	0.00
1,000.0	0.00	0.00	1,000.0	0.0	0.0	0.0	0.00	0.00	0.00
1,100.0	2.00	269.56	1,100.0	0.0	-1.7	-1.7	2.00	2.00	0.00
1,200.0	4.00	269.56	1,199.8	-0.1	-7.0	-7.0	2.00	2.00	0.00
1,300.0	6.00	269.56	1,299.5	-0.1	-15.7	-15.7	2.00	2.00	0.00
1,319.8	6.40	269.56	1,319.1	-0.1	-17.8	-17.8	2.00	2.00	0.00
1,400.0	6.40	269.56	1,398.8	-0.2	-26.8	-26.8	0.00	0.00	0.00
1,500.0	6.40	269.56	1,498.2	-0.3	-37.9	-37.9	0.00	0.00	0.00
1,600.0	6.40	269.56	1,597.6	-0.4	-49.0	-49.0	0.00	0.00	0.00
1,700.0	6.40	269.56	1,697.0	-0.5	-60.2	-60.2	0.00	0.00	0.00
1,800.0	6.40	269.56	1,796.3	-0.6	-71.3	-71.3	0.00	0.00	0.00
1,900.0	6.40	269.56	1,895.7	-0.6	-82.5	-82.5	0.00	0.00	0.00
2,000.0	6.40	269.56	1,995.1	-0.7	-93.6	-93.6	0.00	0.00	0.00
2,100.0	6.40	269.56	2,094.5	-0.8	-104.7	-104.7	0.00	0.00	0.00
2,200.0	6.40	269.56	2,193.9	-0.9	-115.9	-115.9	0.00	0.00	0.00
2,300.0	6.40	269.56	2,293.2	-1.0	-127.0	-127.0	0.00	0.00	0.00
2,400.0	6.40	269.56	2,392.6	-1.1	-138.1	-138.2	0.00	0.00	0.00
2,500.0	6.40	269.56	2,492.0	-1.2	-149.3	-149.3	0.00	0.00	0.00
2,600.0	6.40	269.56	2,591.4	-1.2	-160.4	-160.4	0.00	0.00	0.00
2,700.0	6.40	269.56	2,690.7	-1.3	-171.6	-171.6	0.00	0.00	0.00
2,800.0	6.40	269.56	2,790.1	-1.4	-182.7	-182.7	0.00	0.00	0.00
2,900.0	6.40	269.56	2,889.5	-1.5	-193.8	-193.8	0.00	0.00	0.00
3,000.0	6.40	269.56	2,988.9	-1.6	-205.0	-205.0	0.00	0.00	0.00
3,100.0	6.40	269.56	3,088.3	-1.7	-216.1	-216.1	0.00	0.00	0.00
3,200.0	6.40	269.56	3,187.6	-1.8	-227.3	-227.3	0.00	0.00	0.00
3,300.0	6.40	269.56	3,287.0	-1.8	-238.4	-238.4	0.00	0.00	0.00
3,400.0	6.40	269.56	3,386.4	-1.9	-249.5	-249.5	0.00	0.00	0.00
3,500.0	6.40	269.56	3,485.8	-2.0	-260.7	-260.7	0.00	0.00	0.00
3,600.0	6.40	269.56	3,585.1	-2.1	-271.8	-271.8	0.00	0.00	0.00
3,700.0	6.40	269.56	3,684.5	-2.2	-282.9	-283.0	0.00	0.00	0.00
3,800.0	6.40	269.56	3,783.9	-2.3	-294.1	-294.1	0.00	0.00	0.00
3,900.0	6.40	269.56	3,883.3	-2.4	-305.2	-305.2	0.00	0.00	0.00
4,000.0	6.40	269.56	3,982.7	-2.4	-316.4	-316.4	0.00	0.00	0.00
4,100.0	6.40	269.56	4,082.0	-2.5	-327.5	-327.5	0.00	0.00	0.00
4,200.0	6.40	269.56	4,181.4	-2.6	-338.6	-338.6	0.00	0.00	0.00
4,300.0	6.40	269.56	4,280.8	-2.7	-349.8	-349.8	0.00	0.00	0.00
4,400.0	6.40	269.56	4,380.2	-2.8	-360.9	-360.9	0.00	0.00	0.00
4,500.0	6.40	269.56	4,479.5	-2.9	-372.0	-372.1	0.00	0.00	0.00
4,600.0	6.40	269.56	4,578.9	-3.0	-383.2	-383.2	0.00	0.00	0.00
4,700.0	6.40	269.56	4,678.3	-3.1	-394.3	-394.3	0.00	0.00	0.00
4,800.0	6.40	269.56	4,777.7	-3.1	-405.5	-405.5	0.00	0.00	0.00
4,868.3	6.40	269.56	4,845.6	-3.2	-413.1	-413.1	0.00	0.00	0.00
Shannon									

# Bill Barrett Corp

## Planning Report

<b>Database:</b>	Compass	<b>Local Co-ordinate Reference:</b>	Well Fiducial 6-62-34-4841BH2
<b>Company:</b>	BILL BARRETT CORP	<b>TVD Reference:</b>	KB @ 4707.0ft (Original Well Elev)
<b>Project:</b>	WELD COUNTY, COLORADO	<b>MD Reference:</b>	KB @ 4707.0ft (Original Well Elev)
<b>Site:</b>	Fiducial 6-62-34_35 NWSW Pad	<b>North Reference:</b>	True
<b>Well:</b>	Fiducial 6-62-34-4841BH2	<b>Survey Calculation Method:</b>	Minimum Curvature
<b>Wellbore:</b>	Wellbore #1		
<b>Design:</b>	Design #1		

Planned Survey									
Measured Depth (ft)	Inclination (°)	Azimuth (°)	Vertical Depth (ft)	+N/-S (ft)	+E/-W (ft)	Vertical Section (ft)	Dogleg Rate (°/100ft)	Build Rate (°/100ft)	Turn Rate (°/100ft)
4,900.0	6.40	269.56	4,877.1	-3.2	-416.6	-416.6	0.00	0.00	0.00
5,000.0	6.40	269.56	4,976.4	-3.3	-427.7	-427.8	0.00	0.00	0.00
5,100.0	6.40	269.56	5,075.8	-3.4	-438.9	-438.9	0.00	0.00	0.00
5,200.0	6.40	269.56	5,175.2	-3.5	-450.0	-450.0	0.00	0.00	0.00
5,300.0	6.40	269.56	5,274.6	-3.6	-461.2	-461.2	0.00	0.00	0.00
5,313.0	6.40	269.56	5,287.4	-3.6	-462.6	-462.6	0.00	0.00	0.00
5,400.0	4.65	269.56	5,374.1	-3.6	-471.0	-471.0	2.00	-2.00	0.00
5,500.0	2.65	269.56	5,473.9	-3.7	-477.4	-477.4	2.00	-2.00	0.00
5,600.0	0.65	269.56	5,573.8	-3.7	-480.2	-480.3	2.00	-2.00	0.00
5,632.7	0.00	89.56	5,606.5	-3.7	-480.4	-480.4	2.00	-2.00	0.00
5,700.0	0.00	89.56	5,673.8	-3.7	-480.4	-480.4	0.00	0.00	0.00
5,800.0	0.00	89.56	5,773.8	-3.7	-480.4	-480.4	0.00	0.00	0.00
5,882.7	0.00	89.56	5,856.5	-3.7	-480.4	-480.4	0.00	0.00	0.00
5,900.0	2.07	89.56	5,873.8	-3.7	-480.1	-480.1	12.00	12.00	0.00
6,000.0	14.07	89.56	5,972.6	-3.6	-466.1	-466.1	12.00	12.00	0.00
6,100.0	26.07	89.56	6,066.4	-3.3	-431.8	-431.8	12.00	12.00	0.00
6,158.8	33.13	89.56	6,117.5	-3.1	-402.8	-402.8	12.00	12.00	0.00
Sharon Springs									
6,200.0	38.07	89.56	6,151.0	-2.9	-378.8	-378.8	12.00	12.00	0.00
6,273.4	46.88	89.56	6,205.1	-2.5	-329.3	-329.3	12.00	12.00	0.00
Niobrara									
6,300.0	50.07	89.56	6,222.7	-2.4	-309.4	-309.4	12.00	12.00	0.00
6,400.0	62.07	89.56	6,278.4	-1.7	-226.6	-226.6	12.00	12.00	0.00
6,500.0	74.07	89.56	6,315.7	-1.0	-134.0	-134.0	12.00	12.00	0.00
6,511.8	75.49	89.56	6,318.8	-0.9	-122.6	-122.6	12.00	12.00	0.00
Top B2 Target									
6,600.0	86.07	89.56	6,332.9	-0.3	-35.7	-35.7	12.00	12.00	0.00
6,635.7	90.36	89.56	6,334.0	0.0	0.0	0.0	12.00	12.00	0.00
7" Csg - F 34-4841BH2 LP									
6,700.0	90.36	89.56	6,333.6	0.5	64.3	64.3	0.00	0.00	0.00
6,800.0	90.36	89.56	6,333.0	1.3	164.3	164.3	0.00	0.00	0.00
6,900.0	90.36	89.56	6,332.4	2.1	264.3	264.3	0.00	0.00	0.00
7,000.0	90.36	89.56	6,331.7	2.8	364.3	364.3	0.00	0.00	0.00
7,100.0	90.36	89.56	6,331.1	3.6	464.3	464.3	0.00	0.00	0.00
7,200.0	90.36	89.56	6,330.5	4.4	564.3	564.3	0.00	0.00	0.00
7,300.0	90.36	89.56	6,329.9	5.2	664.3	664.3	0.00	0.00	0.00
7,400.0	90.36	89.56	6,329.2	5.9	764.3	764.3	0.00	0.00	0.00
7,500.0	90.36	89.56	6,328.6	6.7	864.3	864.3	0.00	0.00	0.00
7,600.0	90.36	89.56	6,328.0	7.5	964.3	964.3	0.00	0.00	0.00
7,700.0	90.36	89.56	6,327.4	8.3	1,064.3	1,064.3	0.00	0.00	0.00
7,800.0	90.36	89.56	6,326.7	9.0	1,164.2	1,164.3	0.00	0.00	0.00
7,900.0	90.36	89.56	6,326.1	9.8	1,264.2	1,264.3	0.00	0.00	0.00
8,000.0	90.36	89.56	6,325.5	10.6	1,364.2	1,364.3	0.00	0.00	0.00
8,100.0	90.36	89.56	6,324.9	11.4	1,464.2	1,464.3	0.00	0.00	0.00
8,200.0	90.36	89.56	6,324.3	12.1	1,564.2	1,564.3	0.00	0.00	0.00
8,300.0	90.36	89.56	6,323.6	12.9	1,664.2	1,664.3	0.00	0.00	0.00
8,400.0	90.36	89.56	6,323.0	13.7	1,764.2	1,764.3	0.00	0.00	0.00
8,500.0	90.36	89.56	6,322.4	14.5	1,864.2	1,864.3	0.00	0.00	0.00
8,600.0	90.36	89.56	6,321.8	15.2	1,964.2	1,964.3	0.00	0.00	0.00
8,700.0	90.36	89.56	6,321.1	16.0	2,064.2	2,064.3	0.00	0.00	0.00
8,800.0	90.36	89.56	6,320.5	16.8	2,164.2	2,164.3	0.00	0.00	0.00
8,900.0	90.36	89.56	6,319.9	17.6	2,264.2	2,264.3	0.00	0.00	0.00
9,000.0	90.36	89.56	6,319.3	18.3	2,364.2	2,364.3	0.00	0.00	0.00

# Bill Barrett Corp

## Planning Report

<b>Database:</b>	Compass	<b>Local Co-ordinate Reference:</b>	Well Fiducial 6-62-34-4841BH2
<b>Company:</b>	BILL BARRETT CORP	<b>TVD Reference:</b>	KB @ 4707.0ft (Original Well Elev)
<b>Project:</b>	WELD COUNTY, COLORADO	<b>MD Reference:</b>	KB @ 4707.0ft (Original Well Elev)
<b>Site:</b>	Fiducial 6-62-34_35 NWSW Pad	<b>North Reference:</b>	True
<b>Well:</b>	Fiducial 6-62-34-4841BH2	<b>Survey Calculation Method:</b>	Minimum Curvature
<b>Wellbore:</b>	Wellbore #1		
<b>Design:</b>	Design #1		

Planned Survey									
Measured Depth (ft)	Inclination (°)	Azimuth (°)	Vertical Depth (ft)	+N/-S (ft)	+E/-W (ft)	Vertical Section (ft)	Dogleg Rate (°/100ft)	Build Rate (°/100ft)	Turn Rate (°/100ft)
9,100.0	90.36	89.56	6,318.7	19.1	2,464.2	2,464.3	0.00	0.00	0.00
9,200.0	90.36	89.56	6,318.0	19.9	2,564.2	2,564.3	0.00	0.00	0.00
9,300.0	90.36	89.56	6,317.4	20.7	2,664.2	2,664.3	0.00	0.00	0.00
9,400.0	90.36	89.56	6,316.8	21.5	2,764.2	2,764.3	0.00	0.00	0.00
9,500.0	90.36	89.56	6,316.2	22.2	2,864.2	2,864.3	0.00	0.00	0.00
9,600.0	90.36	89.56	6,315.5	23.0	2,964.2	2,964.2	0.00	0.00	0.00
9,700.0	90.36	89.56	6,314.9	23.8	3,064.2	3,064.2	0.00	0.00	0.00
9,800.0	90.36	89.56	6,314.3	24.6	3,164.1	3,164.2	0.00	0.00	0.00
9,900.0	90.36	89.56	6,313.7	25.3	3,264.1	3,264.2	0.00	0.00	0.00
10,000.0	90.36	89.56	6,313.0	26.1	3,364.1	3,364.2	0.00	0.00	0.00
10,100.0	90.36	89.56	6,312.4	26.9	3,464.1	3,464.2	0.00	0.00	0.00
10,200.0	90.36	89.56	6,311.8	27.7	3,564.1	3,564.2	0.00	0.00	0.00
10,300.0	90.36	89.56	6,311.2	28.4	3,664.1	3,664.2	0.00	0.00	0.00
10,400.0	90.36	89.56	6,310.6	29.2	3,764.1	3,764.2	0.00	0.00	0.00
10,500.0	90.36	89.56	6,309.9	30.0	3,864.1	3,864.2	0.00	0.00	0.00
10,600.0	90.36	89.56	6,309.3	30.8	3,964.1	3,964.2	0.00	0.00	0.00
10,700.0	90.36	89.56	6,308.7	31.5	4,064.1	4,064.2	0.00	0.00	0.00
10,800.0	90.36	89.56	6,308.1	32.3	4,164.1	4,164.2	0.00	0.00	0.00
10,900.0	90.36	89.56	6,307.4	33.1	4,264.1	4,264.2	0.00	0.00	0.00
11,000.0	90.36	89.56	6,306.8	33.9	4,364.1	4,364.2	0.00	0.00	0.00
11,100.0	90.36	89.56	6,306.2	34.6	4,464.1	4,464.2	0.00	0.00	0.00
11,200.0	90.36	89.56	6,305.6	35.4	4,564.1	4,564.2	0.00	0.00	0.00
11,300.0	90.36	89.56	6,305.0	36.2	4,664.1	4,664.2	0.00	0.00	0.00
11,400.0	90.36	89.56	6,304.3	37.0	4,764.1	4,764.2	0.00	0.00	0.00
11,500.0	90.36	89.56	6,303.7	37.7	4,864.1	4,864.2	0.00	0.00	0.00
11,600.0	90.36	89.56	6,303.1	38.5	4,964.1	4,964.2	0.00	0.00	0.00
11,700.0	90.36	89.56	6,302.5	39.3	5,064.1	5,064.2	0.00	0.00	0.00
11,800.0	90.36	89.56	6,301.8	40.1	5,164.1	5,164.2	0.00	0.00	0.00
11,900.0	90.36	89.56	6,301.2	40.8	5,264.0	5,264.2	0.00	0.00	0.00
12,000.0	90.36	89.56	6,300.6	41.6	5,364.0	5,364.2	0.00	0.00	0.00
12,100.0	90.36	89.56	6,300.0	42.4	5,464.0	5,464.2	0.00	0.00	0.00
12,200.0	90.36	89.56	6,299.3	43.2	5,564.0	5,564.2	0.00	0.00	0.00
12,300.0	90.36	89.56	6,298.7	43.9	5,664.0	5,664.2	0.00	0.00	0.00
12,400.0	90.36	89.56	6,298.1	44.7	5,764.0	5,764.2	0.00	0.00	0.00
12,500.0	90.36	89.56	6,297.5	45.5	5,864.0	5,864.2	0.00	0.00	0.00
12,600.0	90.36	89.56	6,296.9	46.3	5,964.0	5,964.2	0.00	0.00	0.00
12,700.0	90.36	89.56	6,296.2	47.1	6,064.0	6,064.2	0.00	0.00	0.00
12,800.0	90.36	89.56	6,295.6	47.8	6,164.0	6,164.2	0.00	0.00	0.00
12,900.0	90.36	89.56	6,295.0	48.6	6,264.0	6,264.2	0.00	0.00	0.00
13,000.0	90.36	89.56	6,294.4	49.4	6,364.0	6,364.2	0.00	0.00	0.00
13,100.0	90.36	89.56	6,293.7	50.2	6,464.0	6,464.2	0.00	0.00	0.00
13,200.0	90.36	89.56	6,293.1	50.9	6,564.0	6,564.2	0.00	0.00	0.00
13,300.0	90.36	89.56	6,292.5	51.7	6,664.0	6,664.2	0.00	0.00	0.00
13,400.0	90.36	89.56	6,291.9	52.5	6,764.0	6,764.2	0.00	0.00	0.00
13,500.0	90.36	89.56	6,291.3	53.3	6,864.0	6,864.2	0.00	0.00	0.00
13,600.0	90.36	89.56	6,290.6	54.0	6,964.0	6,964.2	0.00	0.00	0.00
13,700.0	90.36	89.56	6,290.0	54.8	7,064.0	7,064.2	0.00	0.00	0.00
13,800.0	90.36	89.56	6,289.4	55.6	7,164.0	7,164.2	0.00	0.00	0.00
13,900.0	90.36	89.56	6,288.8	56.4	7,263.9	7,264.2	0.00	0.00	0.00
14,000.0	90.36	89.56	6,288.1	57.1	7,363.9	7,364.2	0.00	0.00	0.00
14,100.0	90.36	89.56	6,287.5	57.9	7,463.9	7,464.2	0.00	0.00	0.00
14,200.0	90.36	89.56	6,286.9	58.7	7,563.9	7,564.2	0.00	0.00	0.00
14,300.0	90.36	89.56	6,286.3	59.5	7,663.9	7,664.2	0.00	0.00	0.00
14,400.0	90.36	89.56	6,285.6	60.2	7,763.9	7,764.2	0.00	0.00	0.00

# Bill Barrett Corp

## Planning Report

<b>Database:</b>	Compass	<b>Local Co-ordinate Reference:</b>	Well Fiducial 6-62-34-4841BH2
<b>Company:</b>	BILL BARRETT CORP	<b>TVD Reference:</b>	KB @ 4707.0ft (Original Well Elev)
<b>Project:</b>	WELD COUNTY, COLORADO	<b>MD Reference:</b>	KB @ 4707.0ft (Original Well Elev)
<b>Site:</b>	Fiducial 6-62-34_35 NWSW Pad	<b>North Reference:</b>	True
<b>Well:</b>	Fiducial 6-62-34-4841BH2	<b>Survey Calculation Method:</b>	Minimum Curvature
<b>Wellbore:</b>	Wellbore #1		
<b>Design:</b>	Design #1		

### Planned Survey

Measured Depth (ft)	Inclination (°)	Azimuth (°)	Vertical Depth (ft)	+N/-S (ft)	+E/-W (ft)	Vertical Section (ft)	Dogleg Rate (°/100ft)	Build Rate (°/100ft)	Turn Rate (°/100ft)
14,500.0	90.36	89.56	6,285.0	61.0	7,863.9	7,864.2	0.00	0.00	0.00
14,600.0	90.36	89.56	6,284.4	61.8	7,963.9	7,964.2	0.00	0.00	0.00
14,700.0	90.36	89.56	6,283.8	62.6	8,063.9	8,064.1	0.00	0.00	0.00
14,800.0	90.36	89.56	6,283.2	63.3	8,163.9	8,164.1	0.00	0.00	0.00
14,900.0	90.36	89.56	6,282.5	64.1	8,263.9	8,264.1	0.00	0.00	0.00
15,000.0	90.36	89.56	6,281.9	64.9	8,363.9	8,364.1	0.00	0.00	0.00
15,100.0	90.36	89.56	6,281.3	65.7	8,463.9	8,464.1	0.00	0.00	0.00
15,200.0	90.36	89.56	6,280.7	66.4	8,563.9	8,564.1	0.00	0.00	0.00
15,300.0	90.36	89.56	6,280.0	67.2	8,663.9	8,664.1	0.00	0.00	0.00
15,400.0	90.36	89.56	6,279.4	68.0	8,763.9	8,764.1	0.00	0.00	0.00
15,500.0	90.36	89.56	6,278.8	68.8	8,863.9	8,864.1	0.00	0.00	0.00
15,600.0	90.36	89.56	6,278.2	69.5	8,963.9	8,964.1	0.00	0.00	0.00
15,700.0	90.36	89.56	6,277.6	70.3	9,063.9	9,064.1	0.00	0.00	0.00
15,800.0	90.36	89.56	6,276.9	71.1	9,163.9	9,164.1	0.00	0.00	0.00
15,900.0	90.36	89.56	6,276.3	71.9	9,263.8	9,264.1	0.00	0.00	0.00
16,000.0	90.36	89.56	6,275.7	72.7	9,363.8	9,364.1	0.00	0.00	0.00
16,100.0	90.36	89.56	6,275.1	73.4	9,463.8	9,464.1	0.00	0.00	0.00
16,200.0	90.36	89.56	6,274.4	74.2	9,563.8	9,564.1	0.00	0.00	0.00
16,270.4	90.36	89.56	6,274.0	74.7	9,634.2	9,634.5	0.00	0.00	0.00
F 34-4841BH2 PBHL									

### Casing Points

Measured Depth (ft)	Vertical Depth (ft)	Name	Casing Diameter (")	Hole Diameter (")
6,635.7	6,334.0	7" Csg	7	8-3/4

### Formations

Measured Depth (ft)	Vertical Depth (ft)	Name	Lithology	Dip (°)	Dip Direction (°)
157.0	157.0	Fox Hills Base		-0.36	89.56
4,868.3	4,843.0	Shannon		-0.36	89.56
6,158.8	6,115.0	Sharon Springs		-0.36	89.56
6,273.4	6,203.0	Niobrara		-0.36	89.56
6,511.8	6,318.0	Top B2 Target		-0.36	89.56
	6,349.0	Base B2 Target		-0.36	89.56