



Cathedral Energy Services
Cathedral Energy Services 1949
Pyrite Rd Casper Wy 82604

135469

5"-100' - MD

10/30/2013 12:37:26 PM

Oper. Company: Encana Oil & Gas
Country: US
State / Province: Colorado
County / Parish: Weld
Started: 10/17/2013 02:00 PM

API/UWI: 51233710600
Field: DJ Basin
Well: Billings 1A-34H
Rig:
Ended: 10/23/2013 04:00 PM

Personnel

Day Hand: Kenneth Wagoner
Night Hand: Brett Giannino
Comp. Emp:

Location

Latitude: 40.101620
Longitude: -104.985650
Elev. GL: 4995
Elev. DF: 4995
Elev. KB: 5008

Hole Data

Size	From	To
8.75	1043	7956
6.13	7956	12295

Casing Data

Size	From	To
7in	0	7937
4.5	0	12266

Bit Sizes

Size	From	To
8.75	1043	7956
6.13	7956	12295

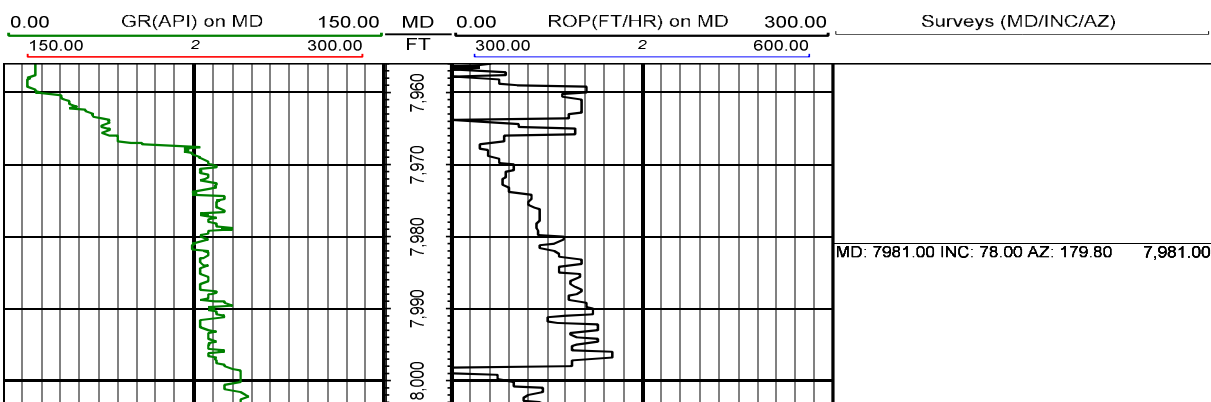
Mud Data

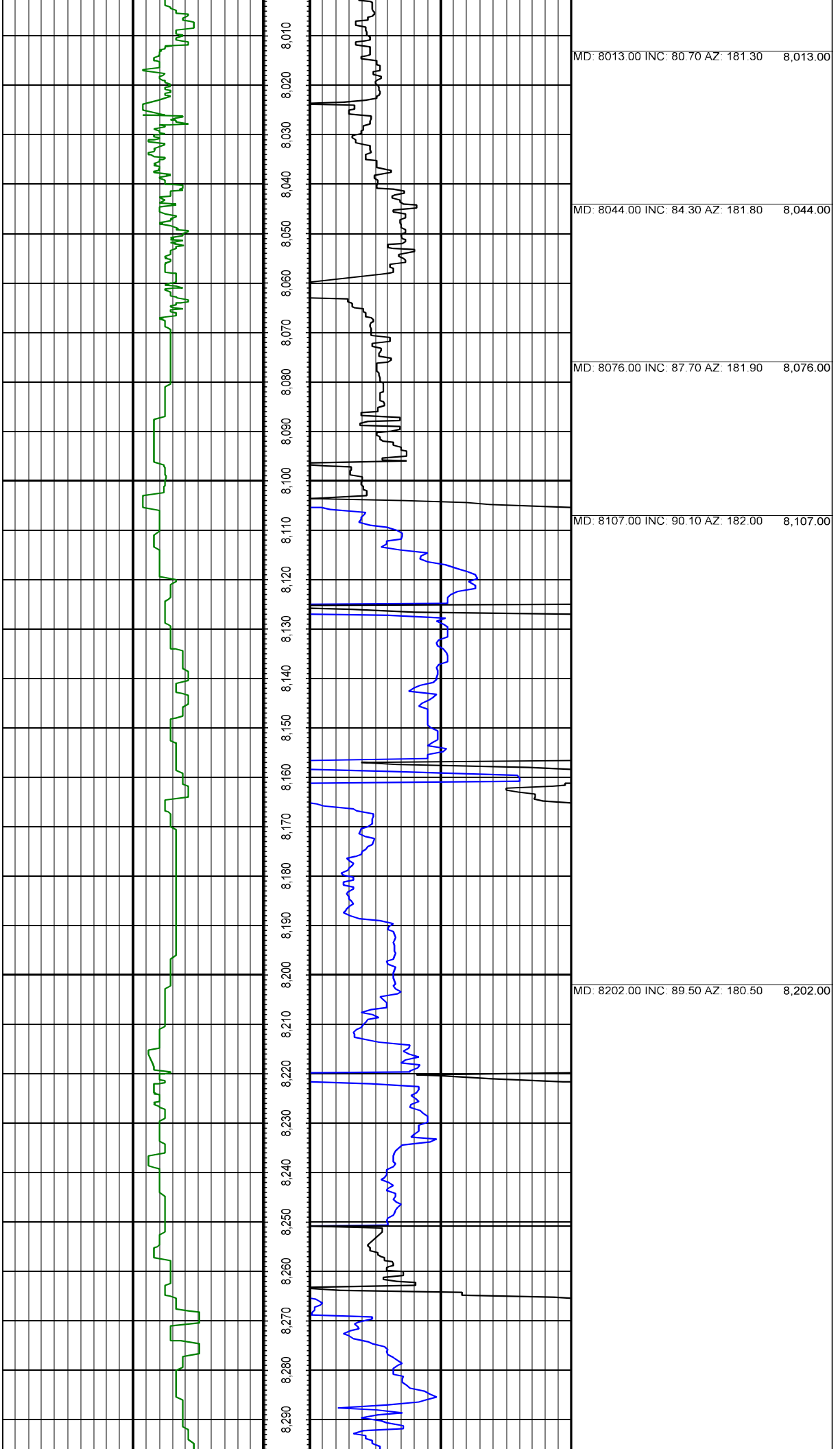
Type	Weight	Density	Viscosity	Rm	Rmf	Rmc	From	To
LSND	8.4	8.4	27.0				1043	7956
LSND	10.1	10.1	37.0				7956	12295

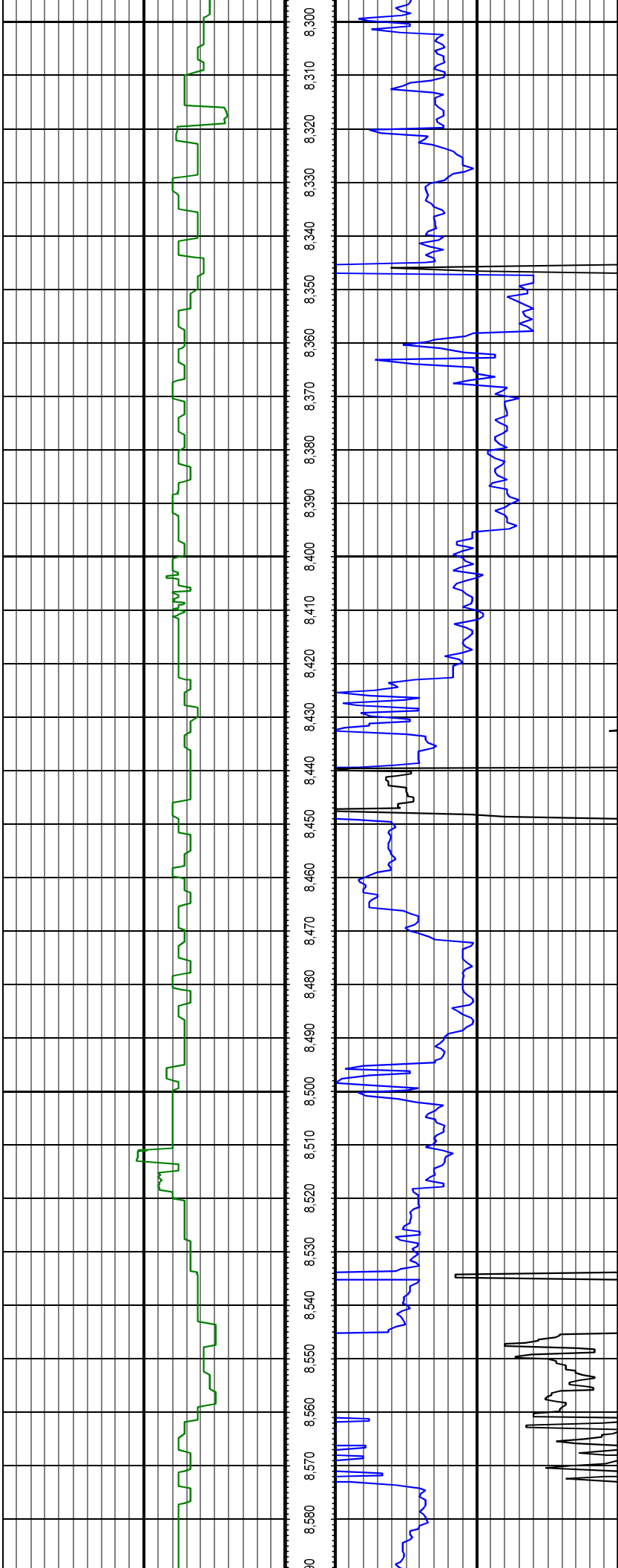
Tool Run Data

Serial Number	Gamma Offset	Resist. Offset	Start Time	Start Depth	End Time	End Depth
1140	41.32	0	10/17/2013 3:30:37 PM	1043	10/19/2013 6:00:37 PM	7956
1580	39	0	10/21/2013 7:30:14 PM	7956	10/23/2013 6:00:14 PM	12246

All interpretations are opinions based on inferences from electrical or other measurements and we cannot and do not guarantee the accuracy or correctness of any interpretation, and we shall not except in the case of gross or willful negligence on our part, be liable or responsible for any loss, cost damages or expenses incurred or sustained by anyone resulting from an interpretation made by any of our officers, agents, or employees.





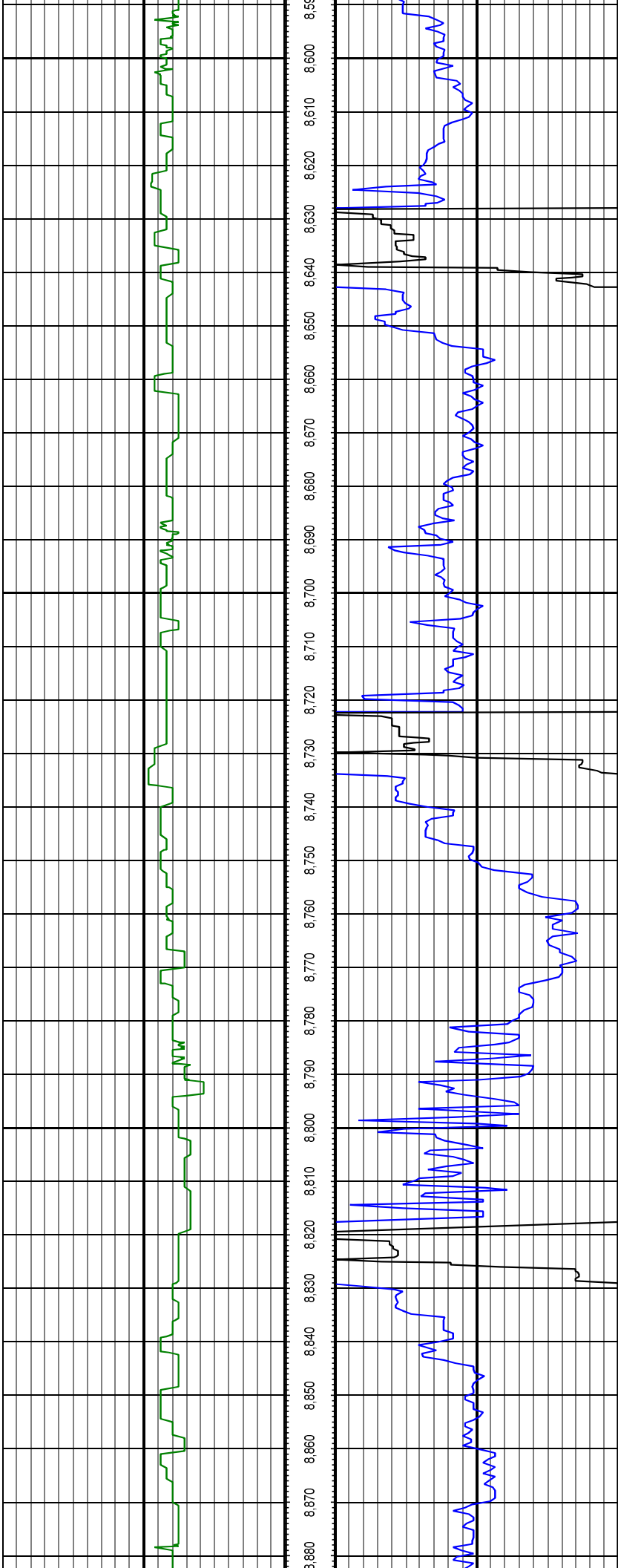


MD: 8297.00 INC: 90.80 AZ: 180.50 8,297.00

MD: 8392.00 INC: 91.20 AZ: 181.10 8,392.00

MD: 8486.00 INC: 90.20 AZ: 181.20 8,486.00

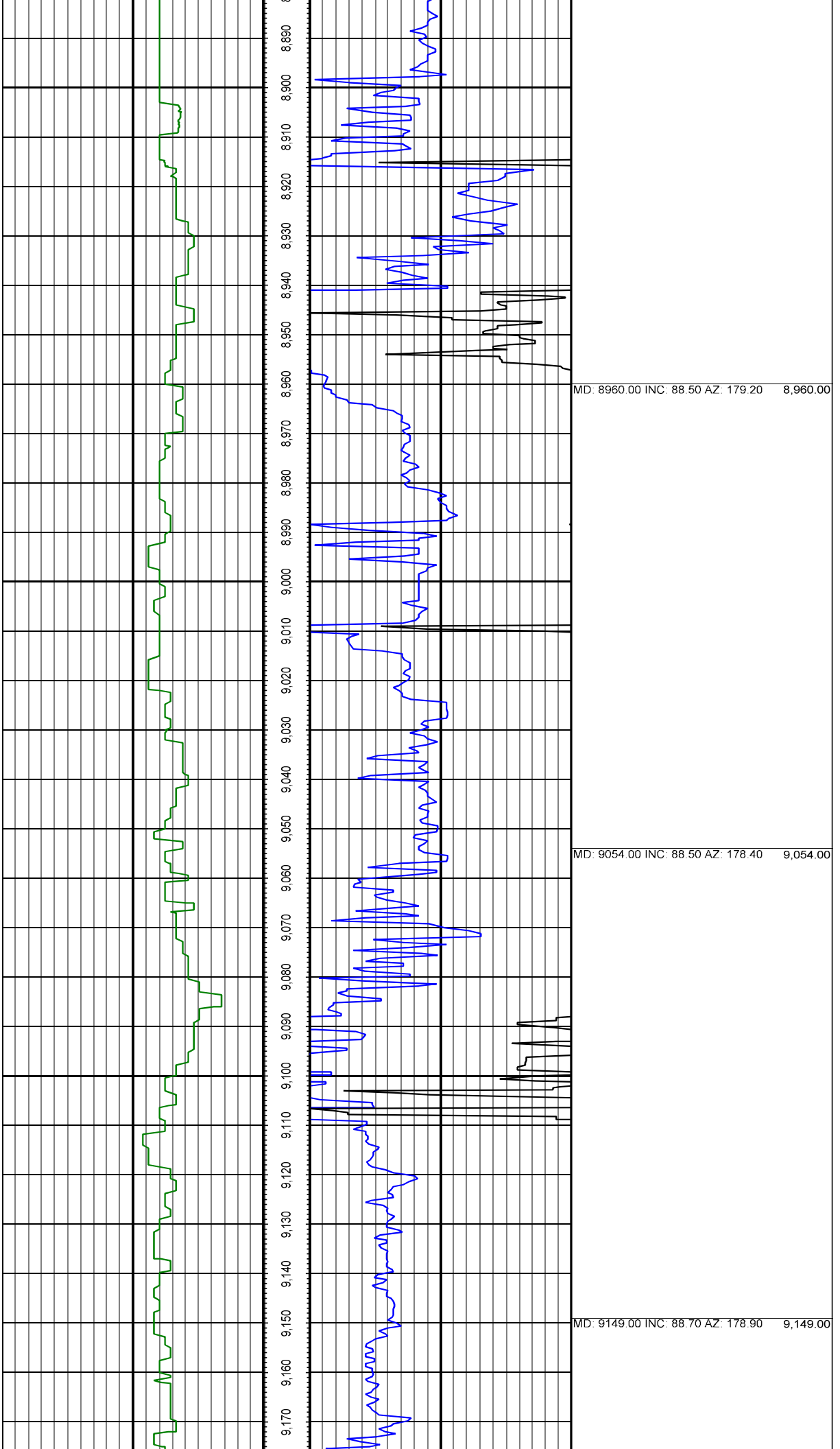
MD: 8581.00 INC: 90.80 AZ: 180.80 8,581.00

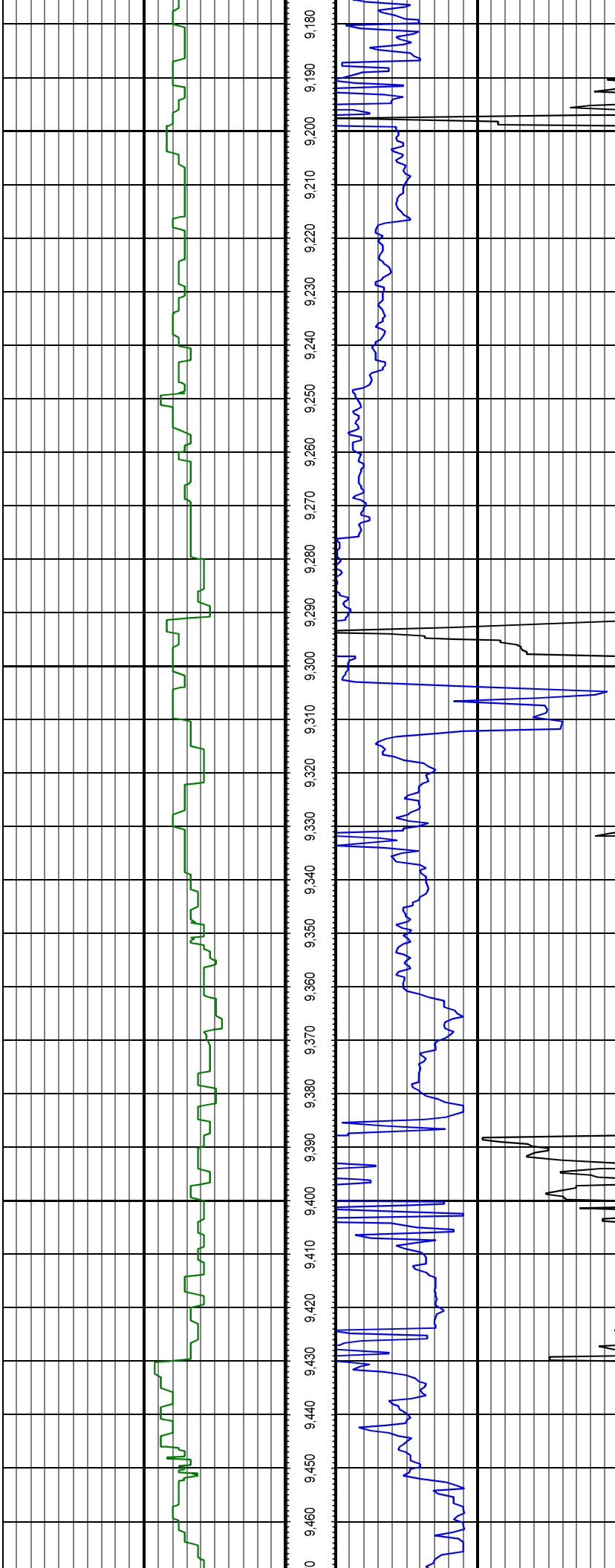


MD: 8676.00 INC: 89.70 AZ: 181.20 8,676.00

MD: 8771.00 INC: 88.90 AZ: 179.50 8,771.00

MD: 8865.00 INC: 88.30 AZ: 179.40 8,865.00

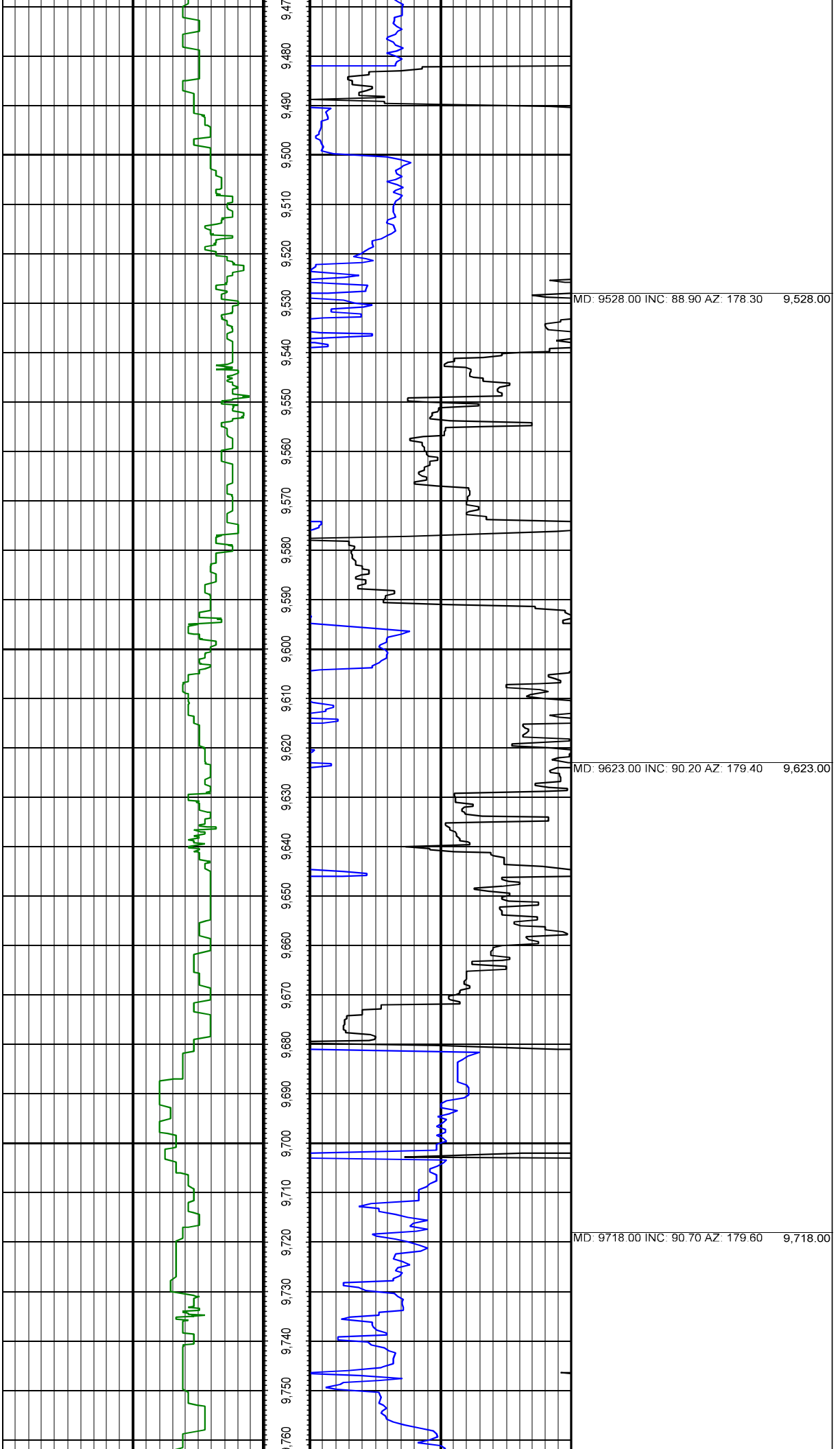


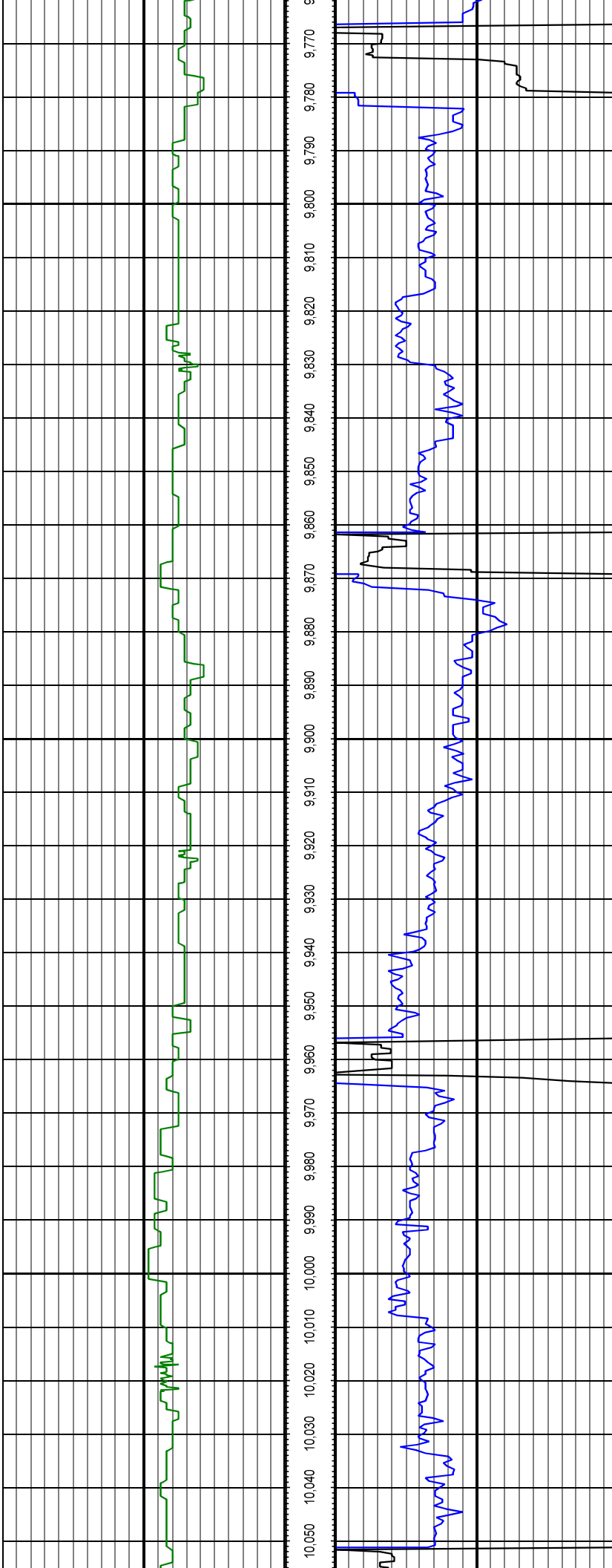


MD: 9244.00 INC: 89.00 AZ: 179.10 9,244.00

MD: 9339.00 INC: 89.20 AZ: 178.80 9,339.00

MD: 9433.00 INC: 88.30 AZ: 178.40 9,433.00

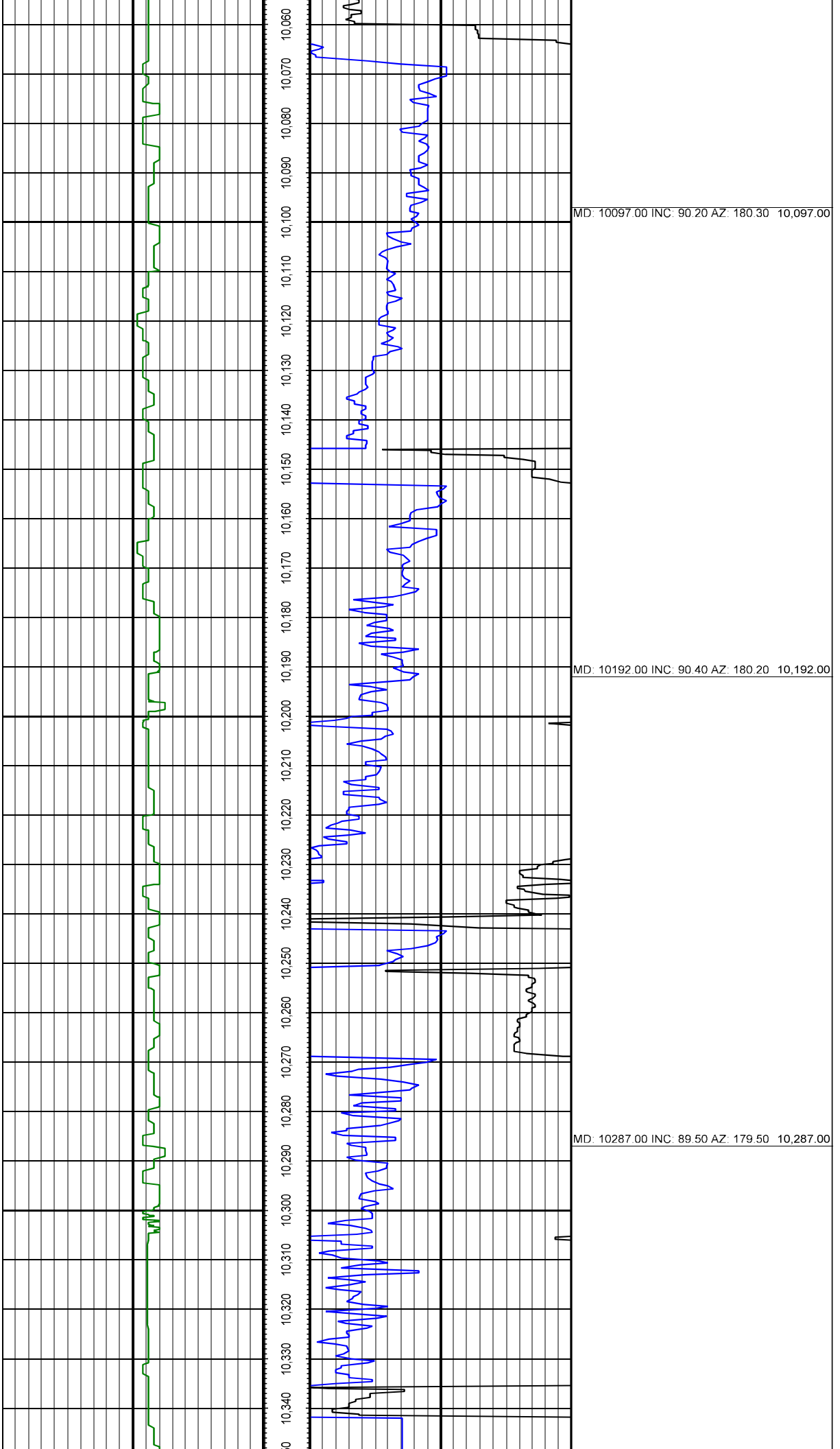


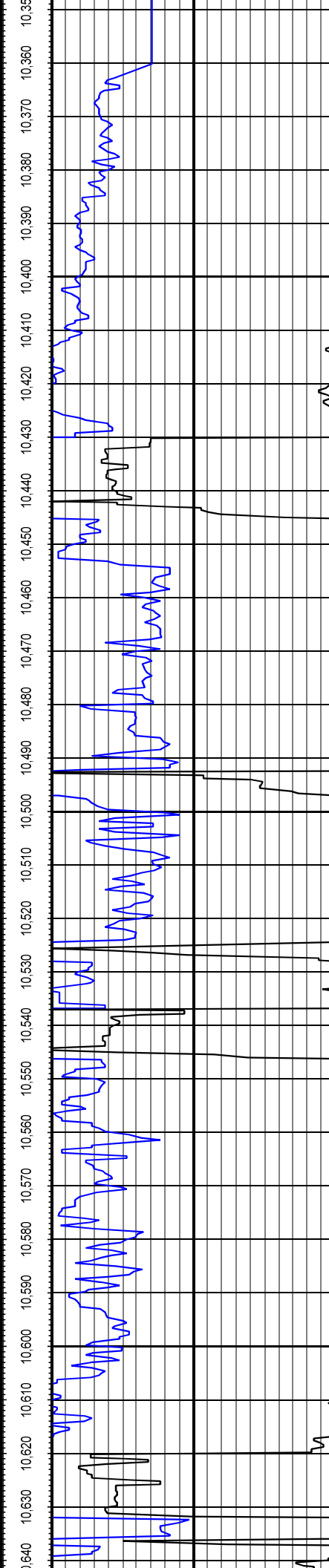
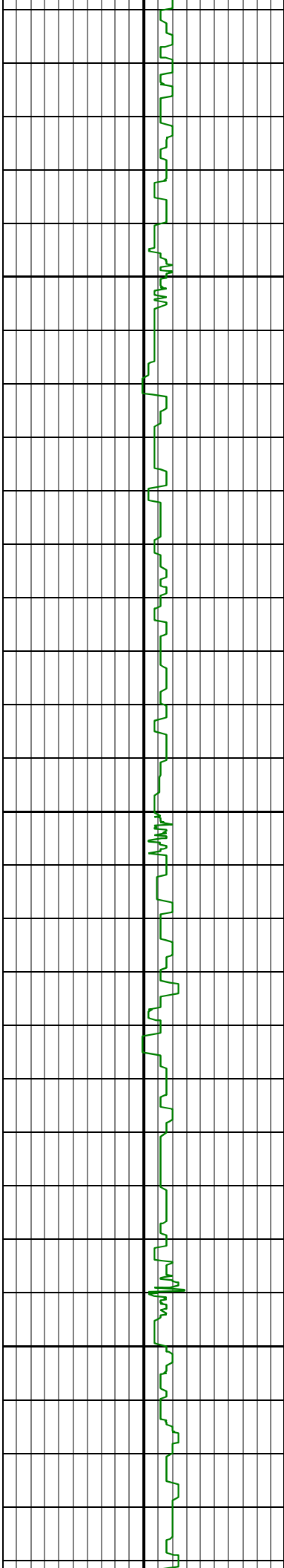


MD: 9812.00 INC: 91.50 AZ: 180.30 9,812.00

MD: 9907.00 INC: 91.10 AZ: 179.90 9,907.00

MD: 10002.00 INC: 90.90 AZ: 180.60 10,002.00

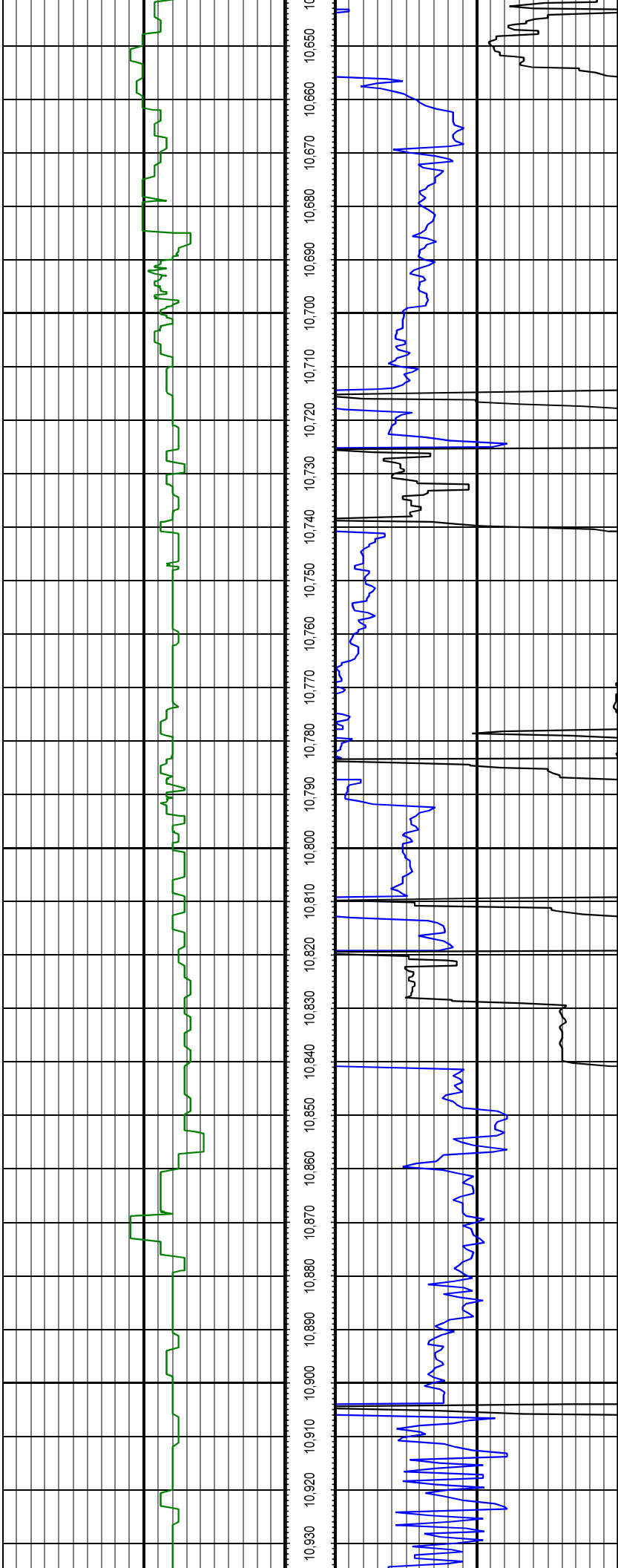




MD: 10381.00 INC: 89.00 AZ: 179.40 10,381.00

MD: 10476.00 INC: 89.80 AZ: 179.50 10,476.00

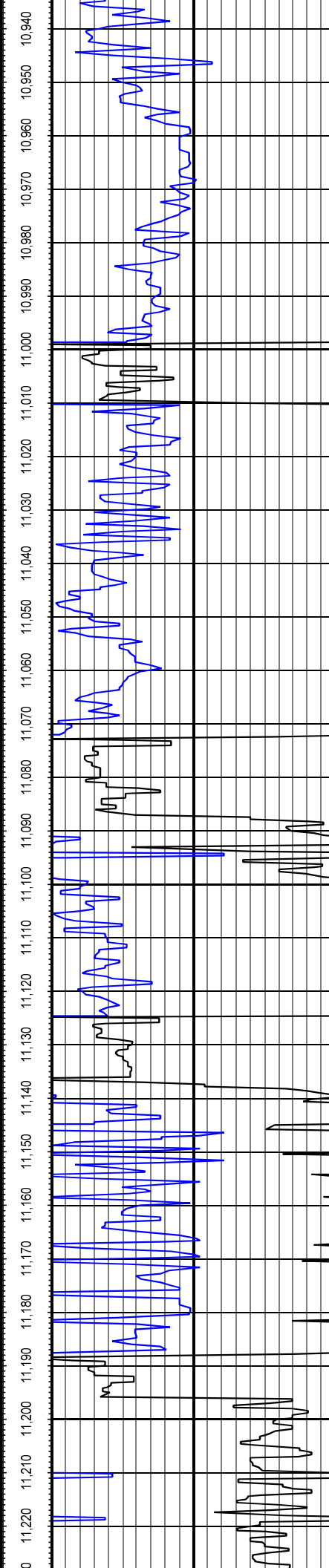
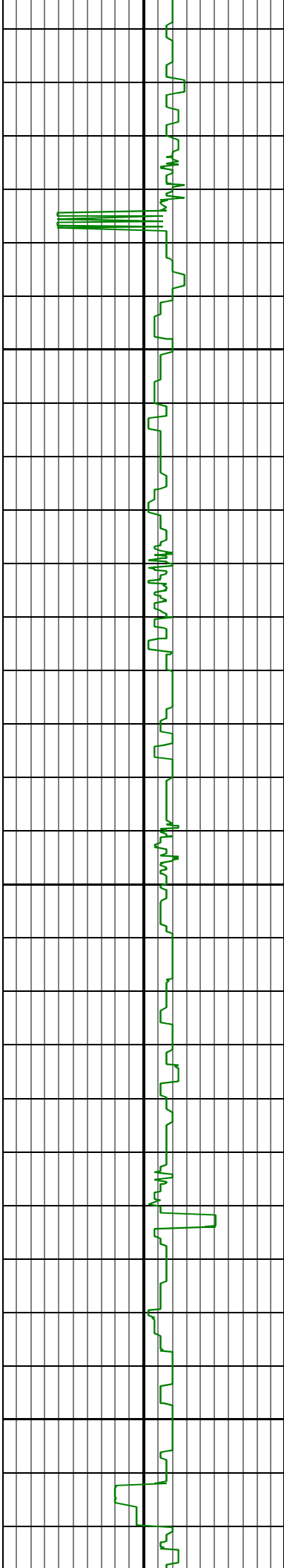
MD: 10571.00 INC: 89.70 AZ: 179.90 10,571.00



MD: 10666.00 INC: 86.70 AZ: 179.80 10,666.00

MD: 10760.00 INC: 88.30 AZ: 180.60 10,760.00

MD: 10855.00 INC: 89.50 AZ: 181.40 10,855.00

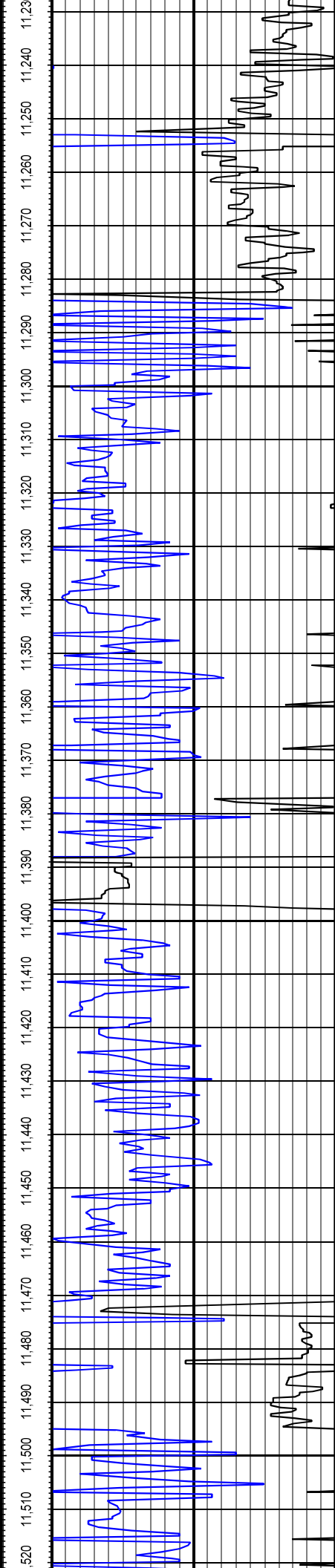
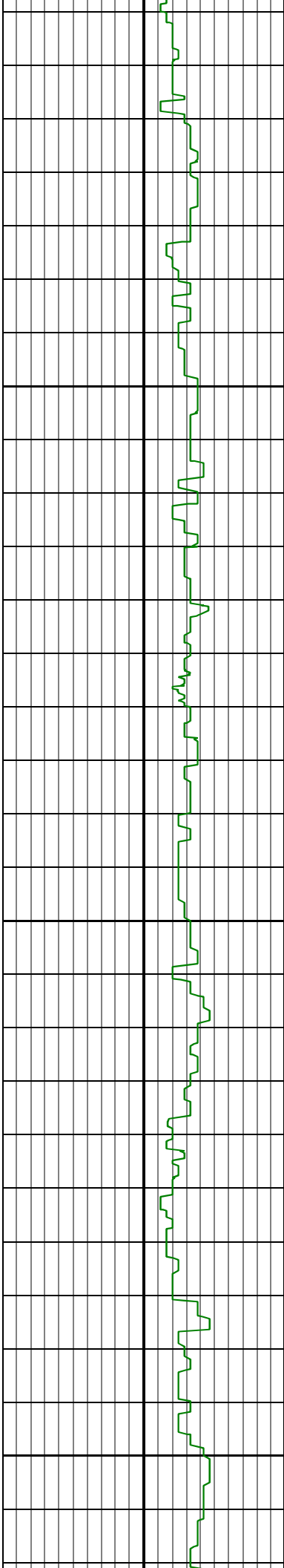


MD: 10950.00 INC: 90.90 AZ: 182.00 10,950.00

MD: 11013.00 INC: 91.40 AZ: 181.60 11,013.00

MD: 11076.00 INC: 89.90 AZ: 180.60 11,076.00

MD: 11139.00 INC: 86.60 AZ: 178.80 11,139.00

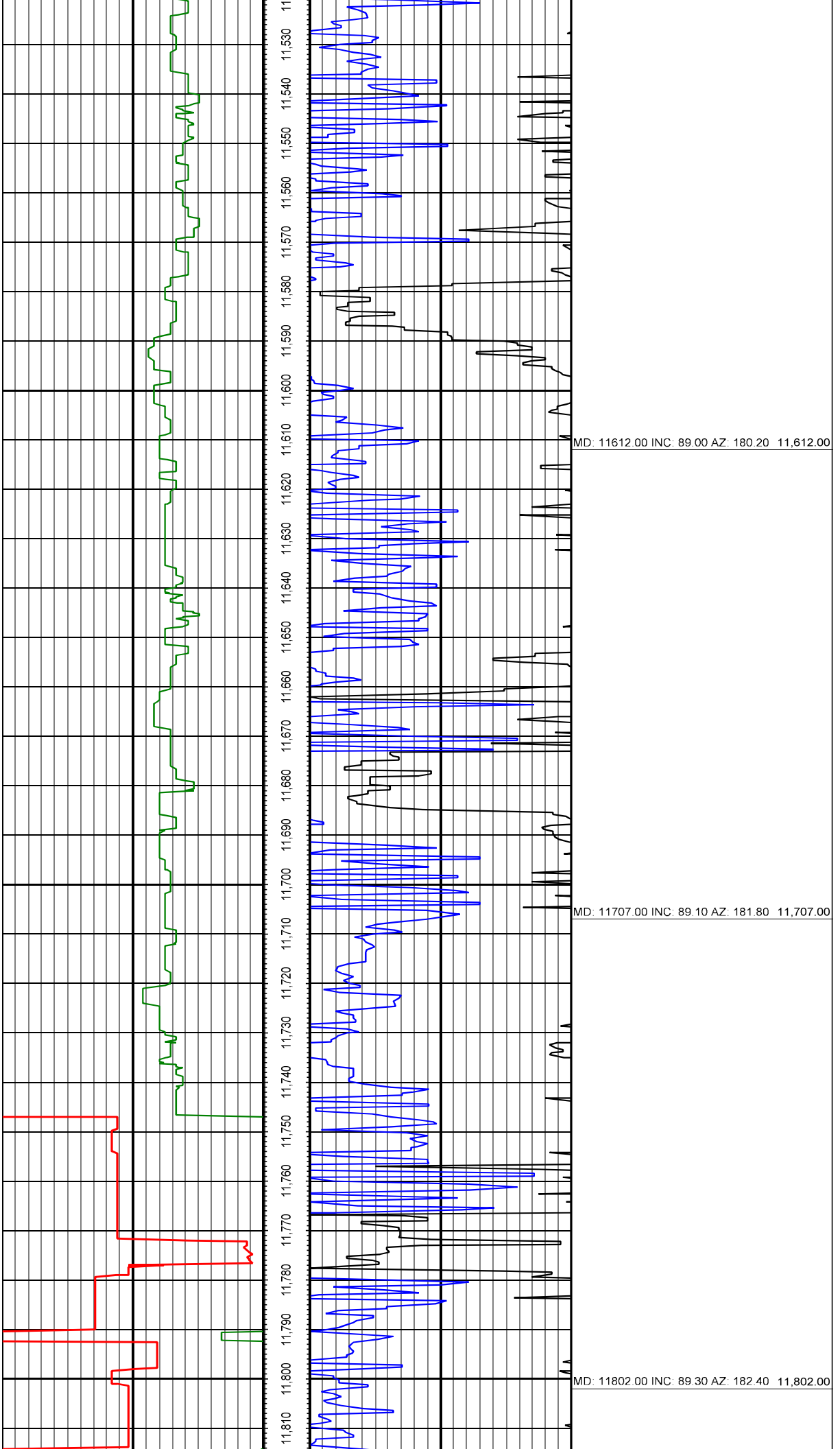


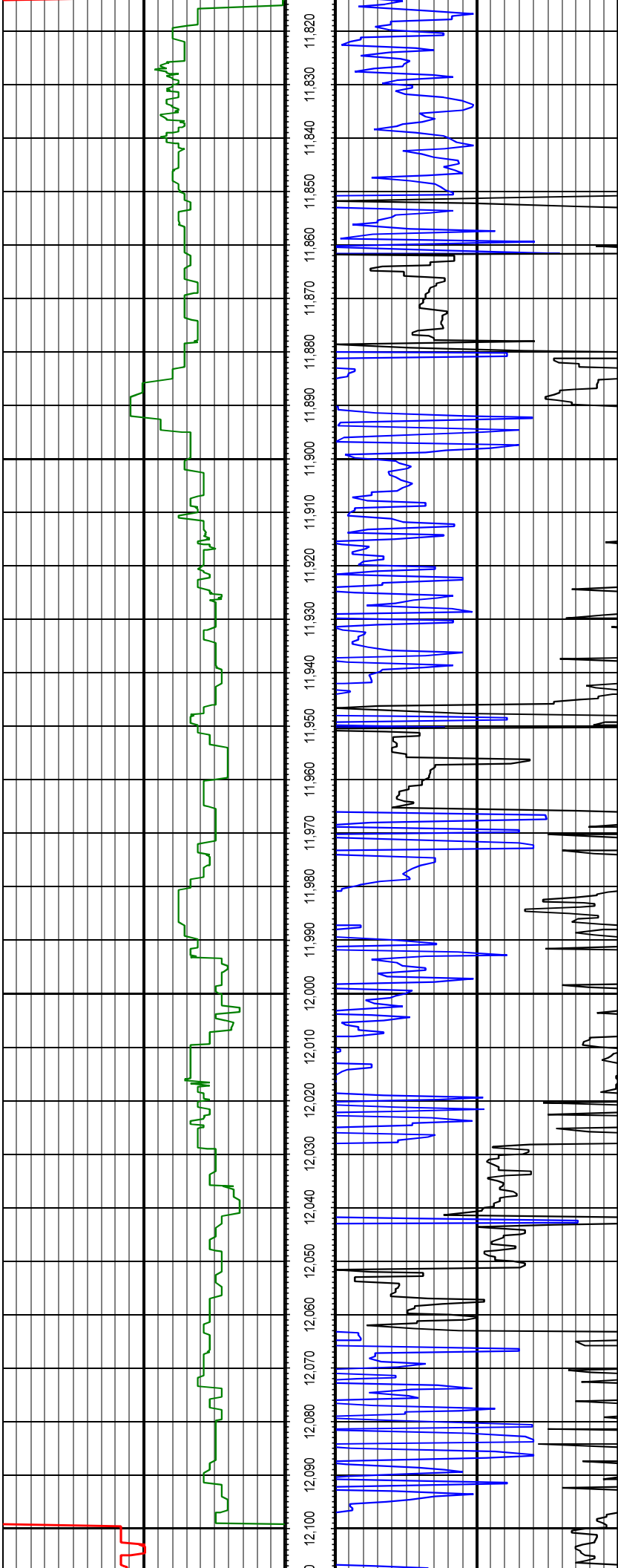
MD: 11234.00 INC: 87.40 AZ: 179.10 11,234.00

MD: 11328.00 INC: 88.30 AZ: 179.10 11,328.00

MD: 11423.00 INC: 88.00 AZ: 179.70 11,423.00

MD: 11518.00 INC: 88.70 AZ: 179.30 11,518.00





MD: 11897.00 INC: 88.70 AZ: 181.30 11,897.00

MD: 11992.00 INC: 88.10 AZ: 181.30 11,992.00

MD: 12086.00 INC: 87.60 AZ: 181.50 12,086.00

