



RADIAL BOND LOG
GAMMA RAY
CCL

Company BILL BARRETT CORPORATION
Well MERRITT 6-66-9-0560CH
Field Wattenberg Field
County WELD
State COLORADO

Company BILL BARRETT CORPORATION
Well MERRITT 6-66-9-0560CH
Field Wattenberg Field
County WELD State COLORADO

Location: API # : 05-123-32692
SHL: 260' FNL & 2140' FEL
NW NE
SEC 9 TWP 6N RGE 66W
Permanent Datum G.L. Elevation 4822'
Log Measured From K.B. 22'
Drilling Measured From K.B.
Other Services
K.B. 4844'
D.F. 4843'
G.L. 4822'

Date

8-JAN-2014

Run Number	ONE
Depth Driller	11694'
Depth Logger	6570'
Bottom Logged Interval	6570'
Top Log Interval	SURFACE
Open Hole Size	8.375"
Type Fluid	WATER
Density / Viscosity	1.0
Max. Recorded Temp.	197 DEG F
Estimated Cement Top	1350'
Time Well Ready	ON ARRIVAL
Time Logger on Bottom	N/A
Equipment Number	3812
Location	GREELEY, CO.
Recorded By	A.PAVEY
Witnessed By	C.BRIDGES

Borehole Record				Tubing Record			
Run Number	Bit	From	To	Size	Weight	From	To
ONE				9 5/8"	36#	SURFACE	830'
TWO				7"	26#	SURFACE	7546'
THREE				4.5"	11.6#	6498'	11694'
FOUR							
Casing Record	Size		Wgt/Ft	Top	Bottom		
Surface String	9 5/8"		36#	SURFACE	830'		
Prot. String							
Production String	7"		26#	SURFACE	7546'		
Liner	4.5"		11.6#	6498'	11694'		

<<< Fold Here >>>

All interpretations are opinions based on inferences from electrical or other measurements and we cannot and do not guarantee the accuracy or correctness of any interpretation, and we shall not, except in the case of gross or willful negligence on our part, be liable or responsible for any loss, costs, damages, or expenses incurred or sustained by anyone resulting from any interpretation made by any of our officers, agents or employees. These interpretations are also subject to our general terms and conditions set out in our current Price Schedule.

Comments

CORRELATED TO LINER HANGER

THANK YOU FOR USING WARRIOR ENERGY SERVICES

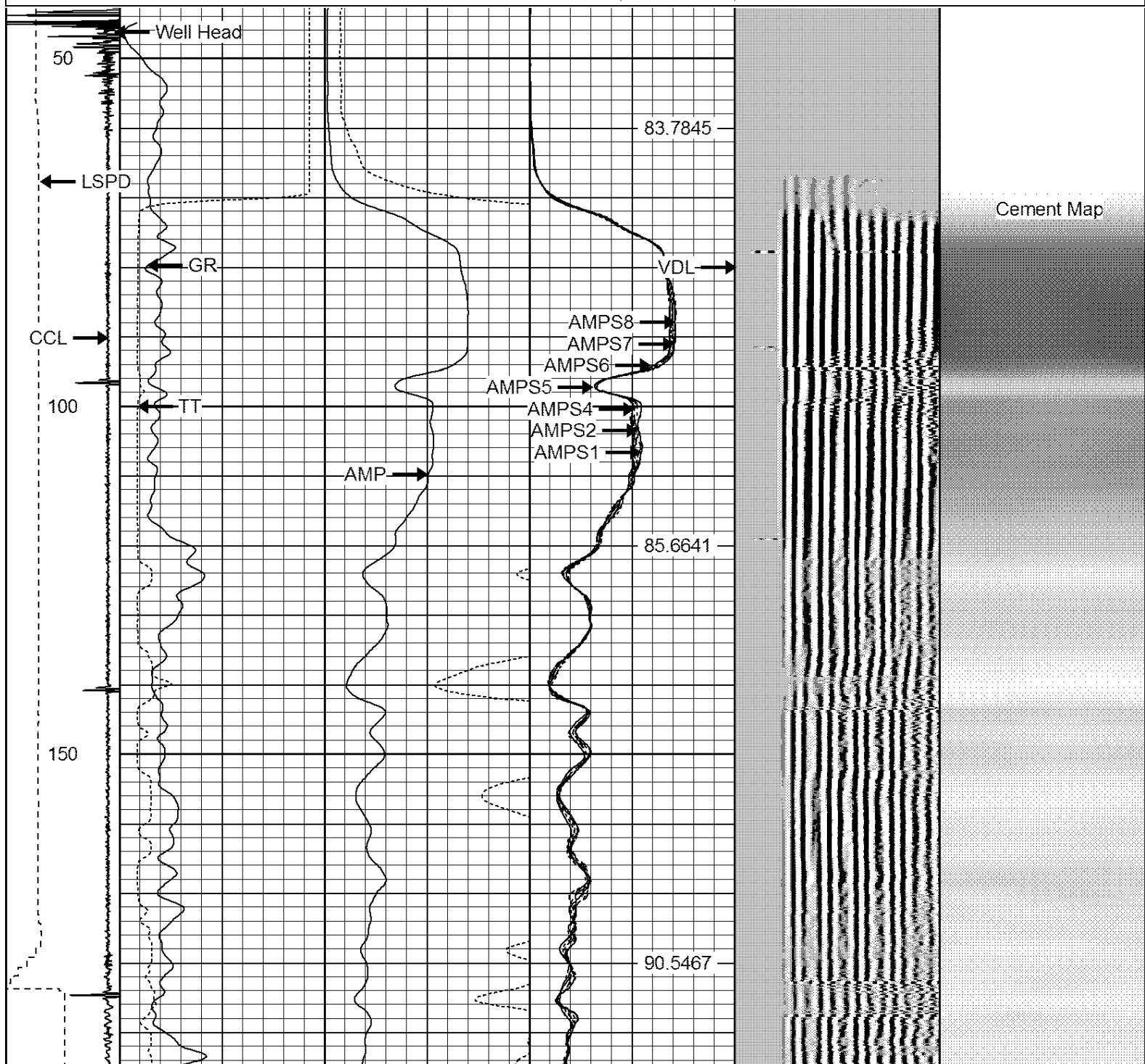


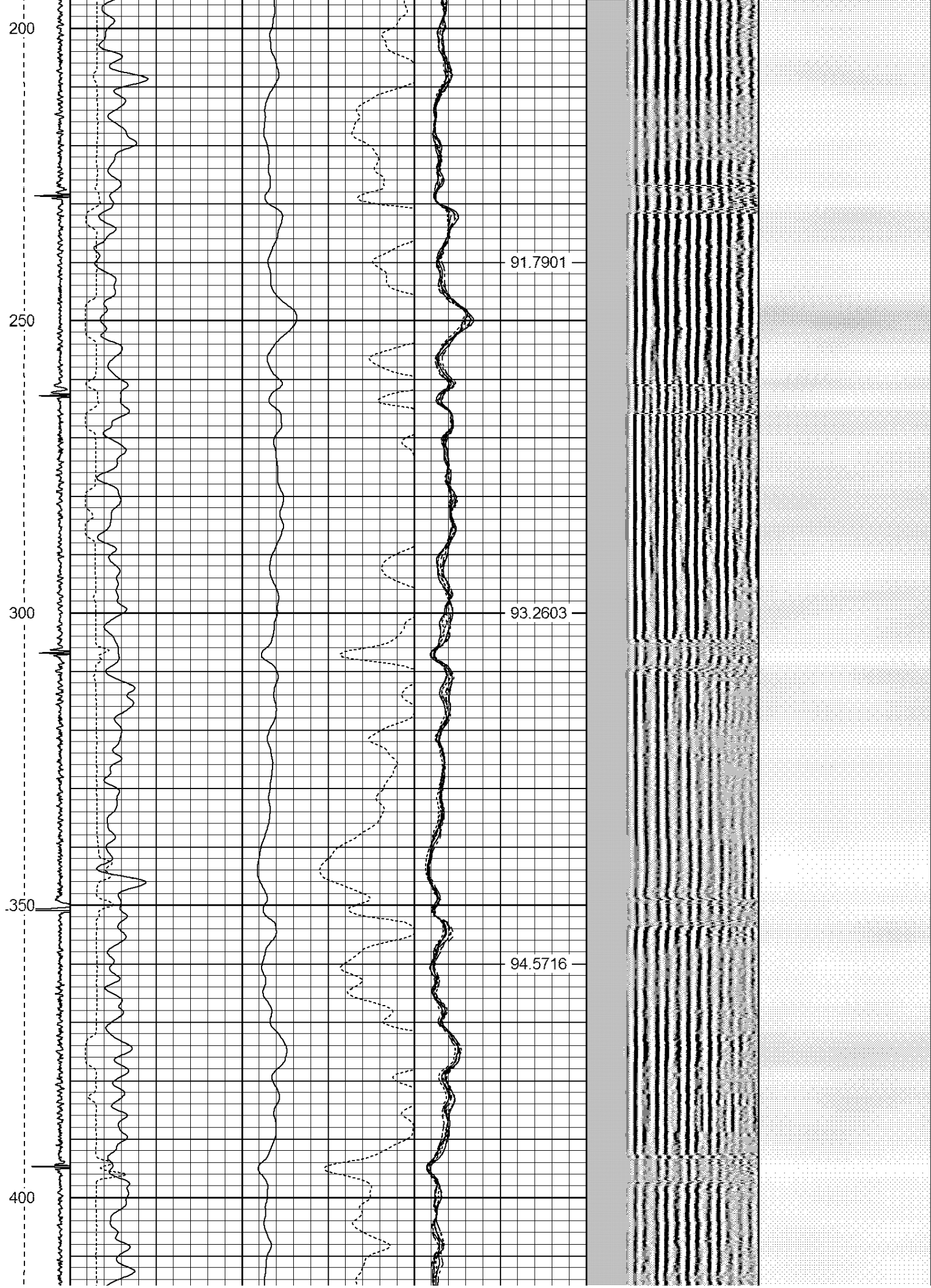
WARRIOR
ENERGY SERVICES

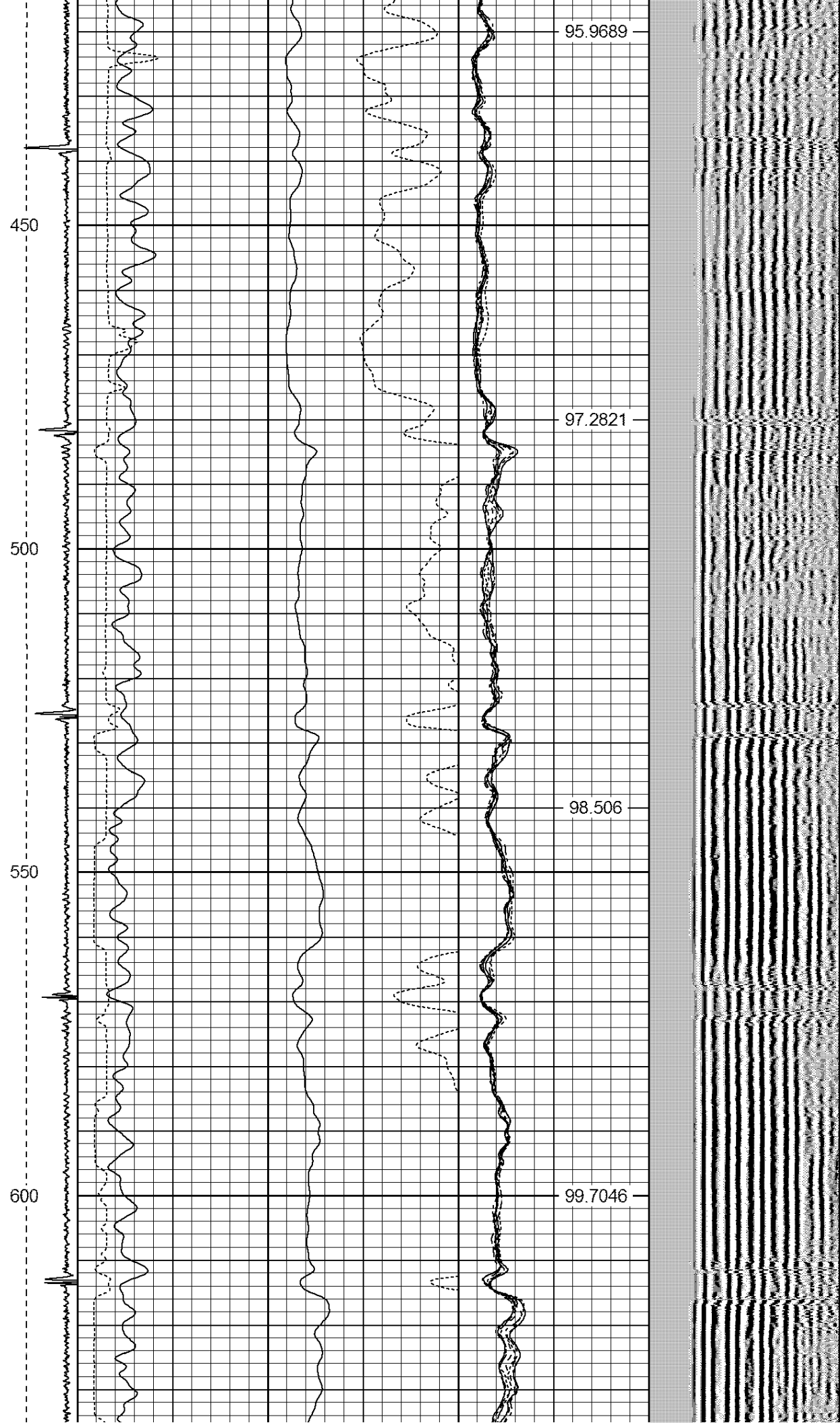
MAIN PASS 0# PSI

Database File: bbc_merritt 6-66-9-0560ch.db
 Dataset Pathname: pass33
 Presentation Format: ips_rbt
 Dataset Creation: Wed Jan 08 14:51:02 2014 by Log 7.0 B1
 Charted by: Depth in Feet scaled 1:240

-9	CCL	1	250	TT (usec)	950	0	AMP (mV)	100	0	AMPS1	100	200	VDL	1200	1	Cement Map	8
	LSPD		0	GR (GAPI)	200	0	AMPx5 (mV)	20	0	AMPS2	100				1		100
	(ft/min)		200	GR (GAPI)	400				0	AMPS4	100						
0		250							0	AMPS5	100						
									0	AMPS6	100						
									0	AMPS7	100						
									0	AMPS8	100						
										IntTemp							
										(degF)							







650

700

750

800

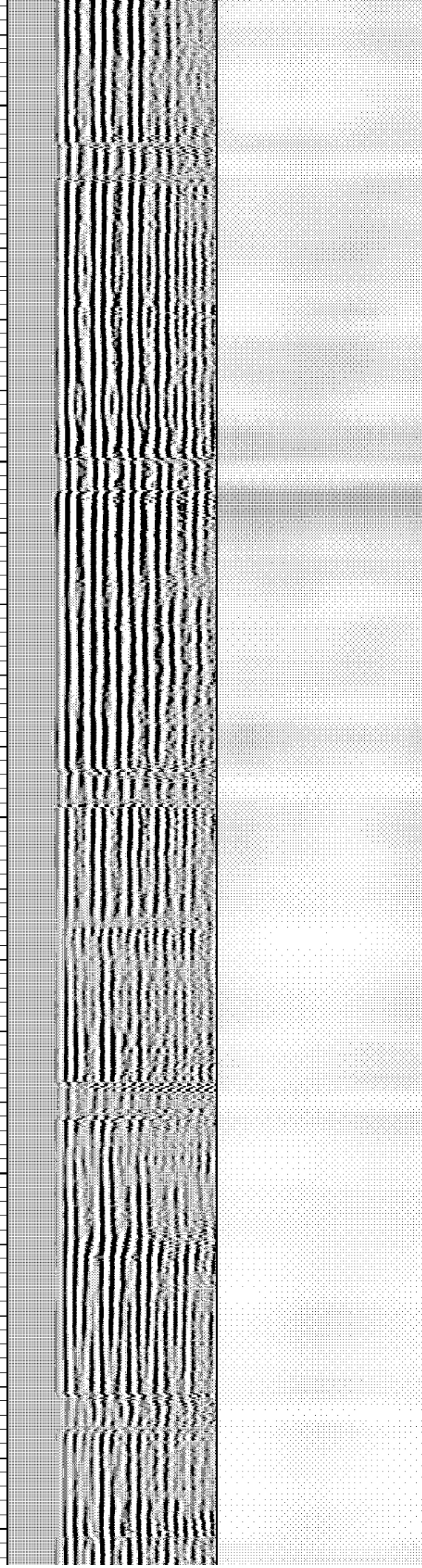
850

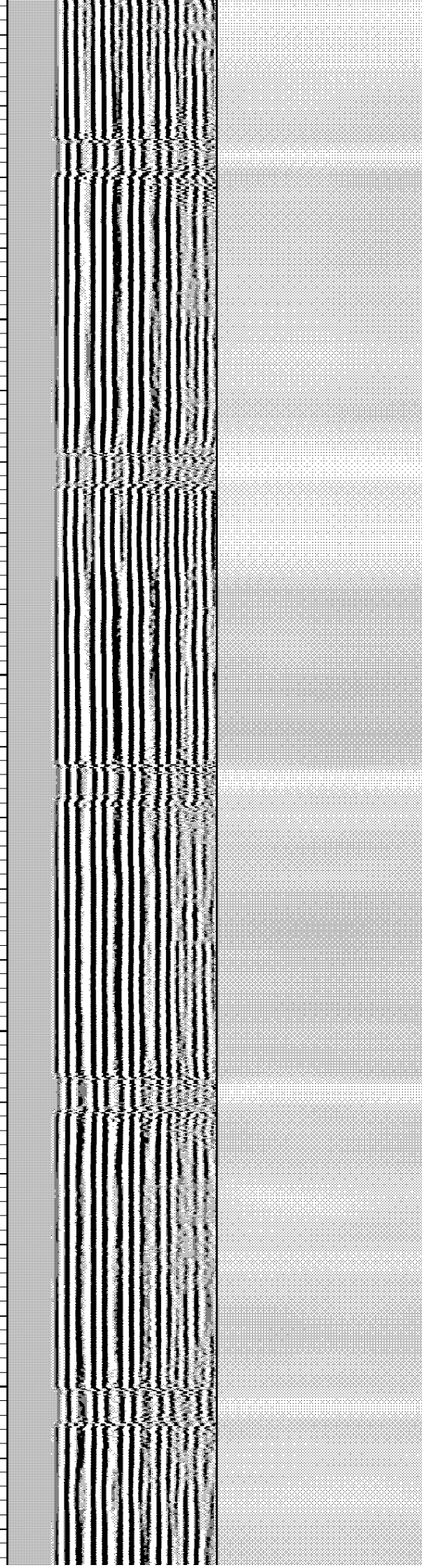
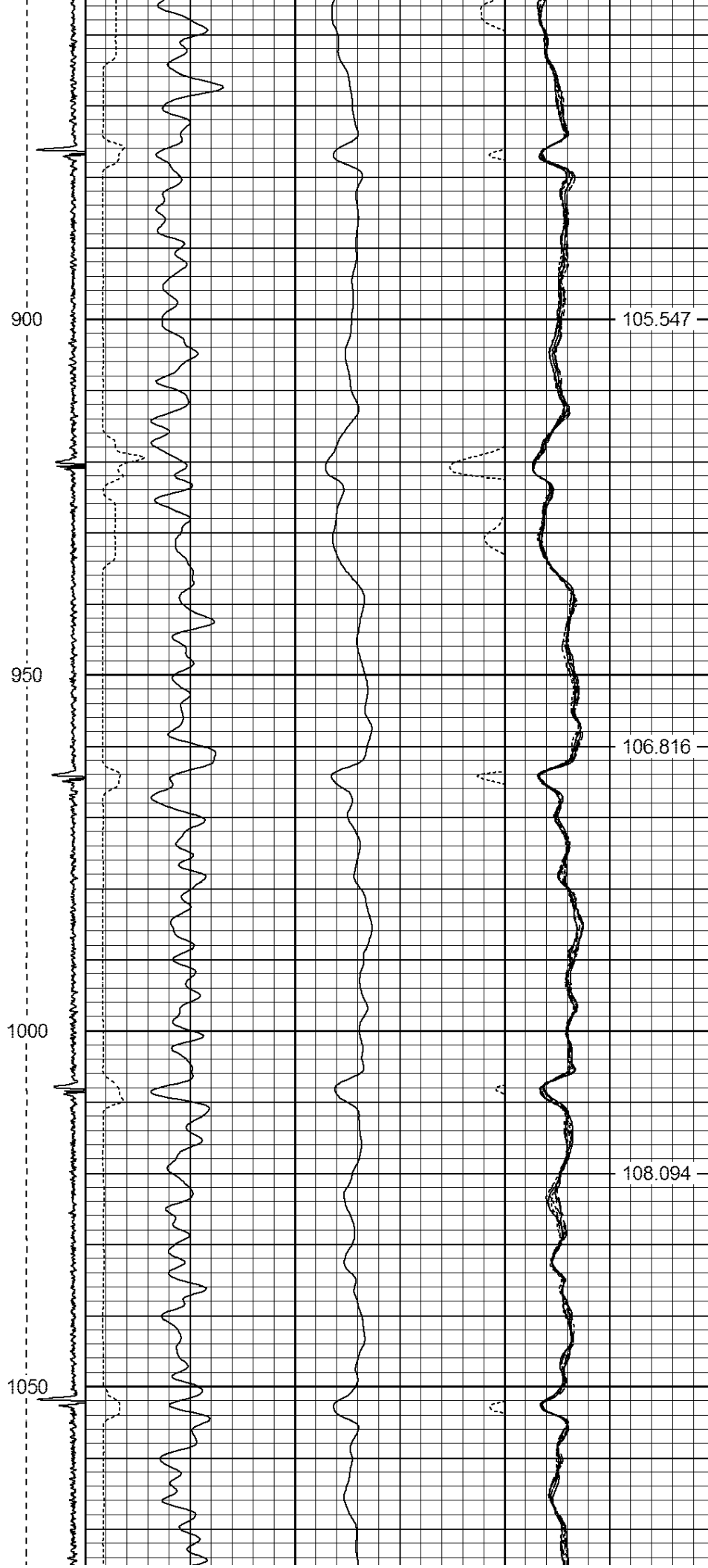
100.863

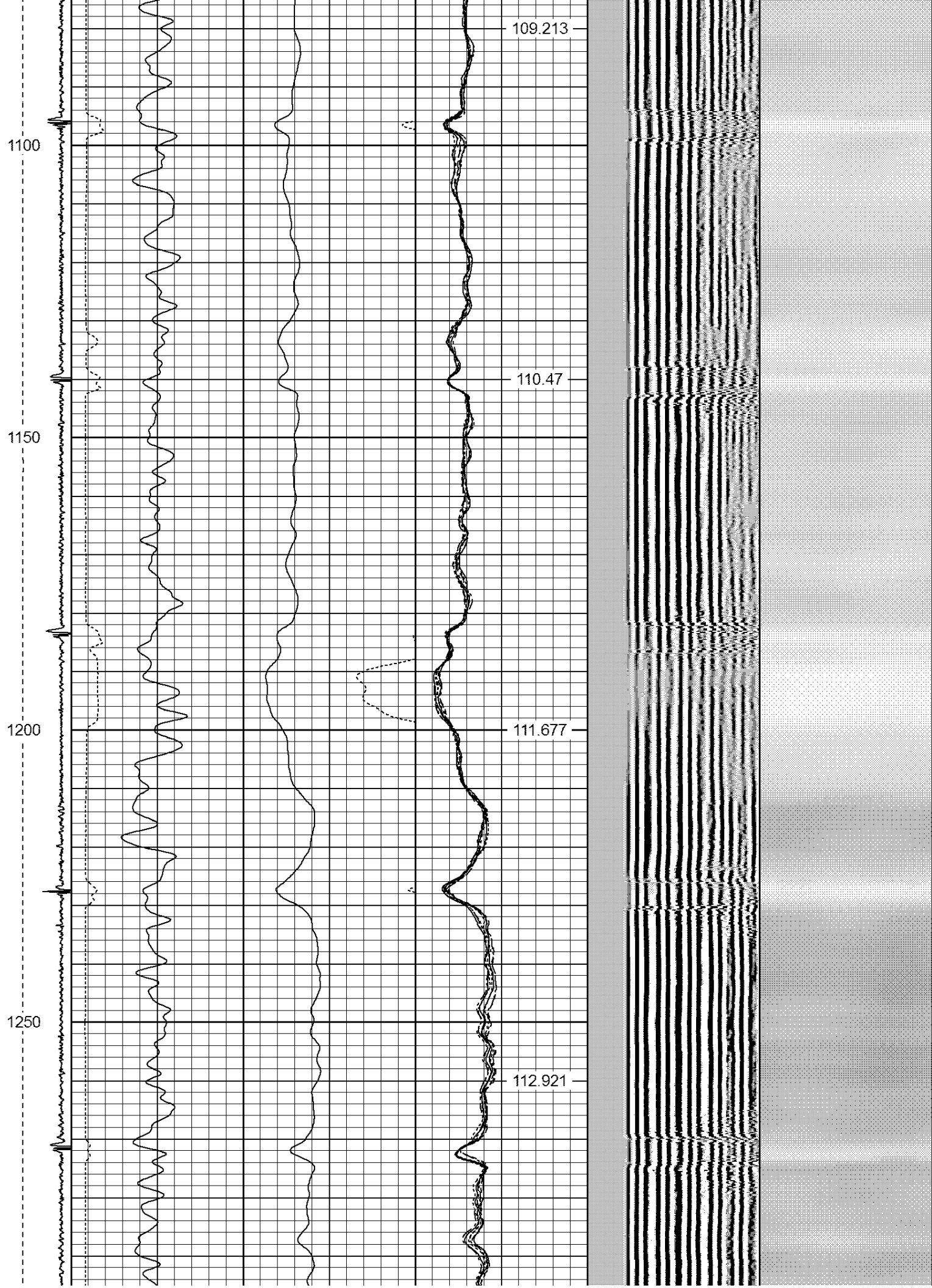
102.03

103.202

104.354







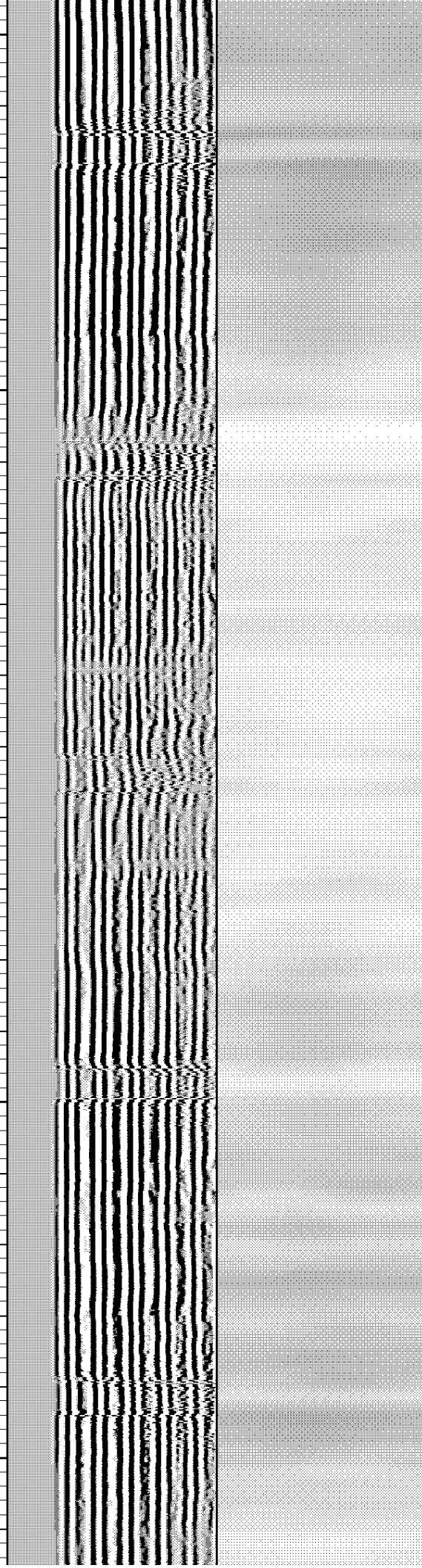
1300
1350
1400
1450
1500

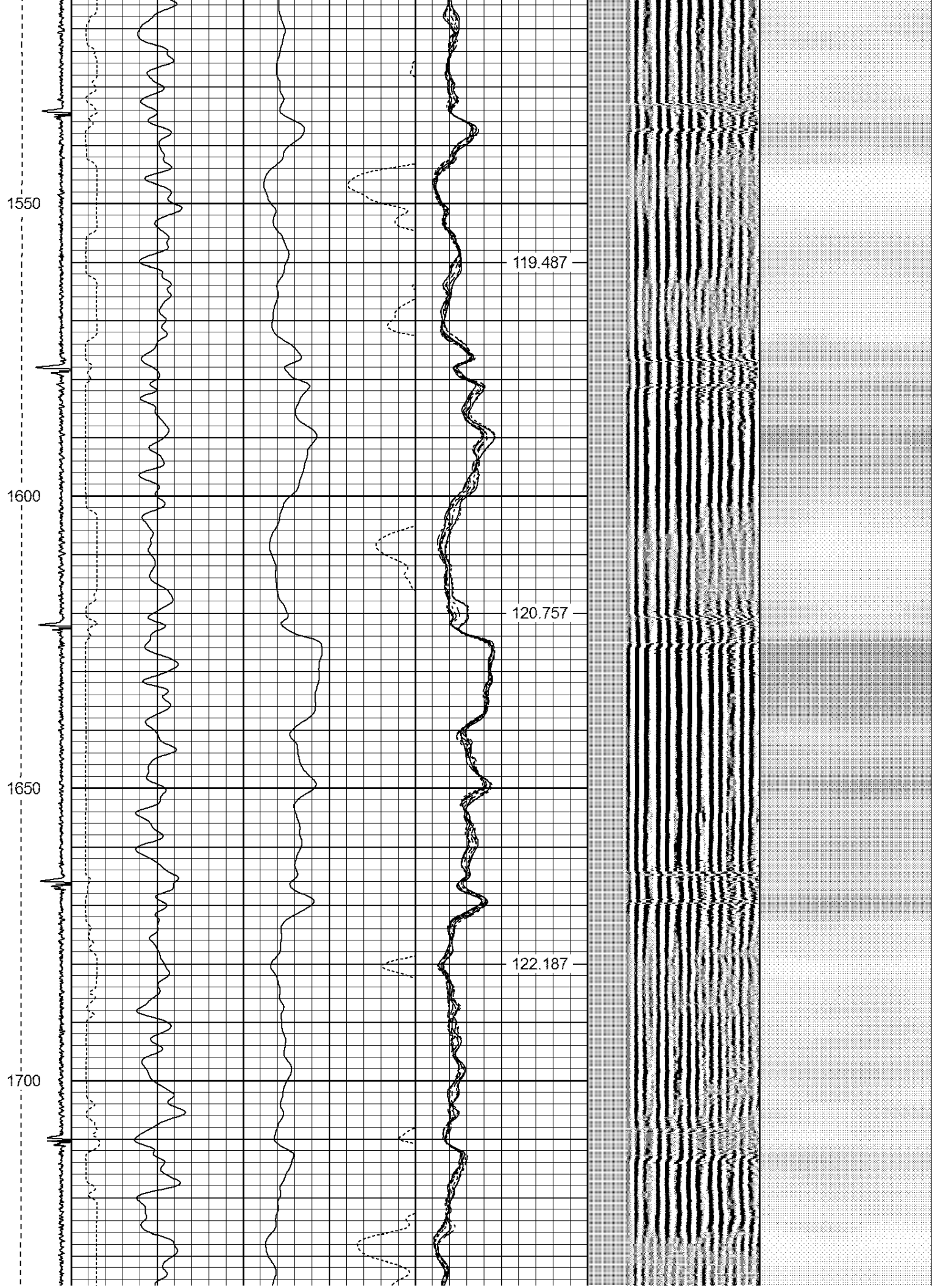
114.226

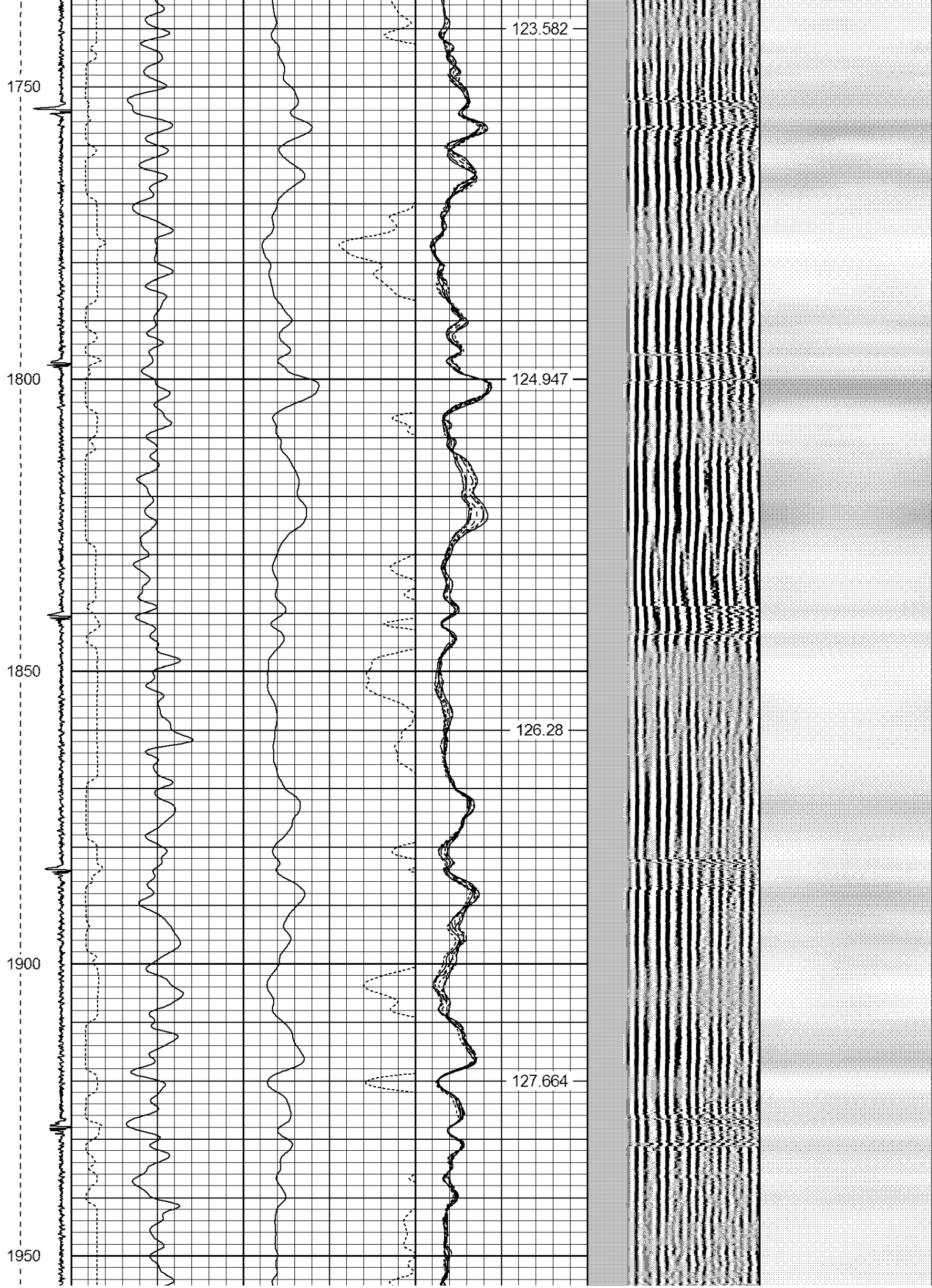
115.446

116.749

118.129







2000

2050

2100

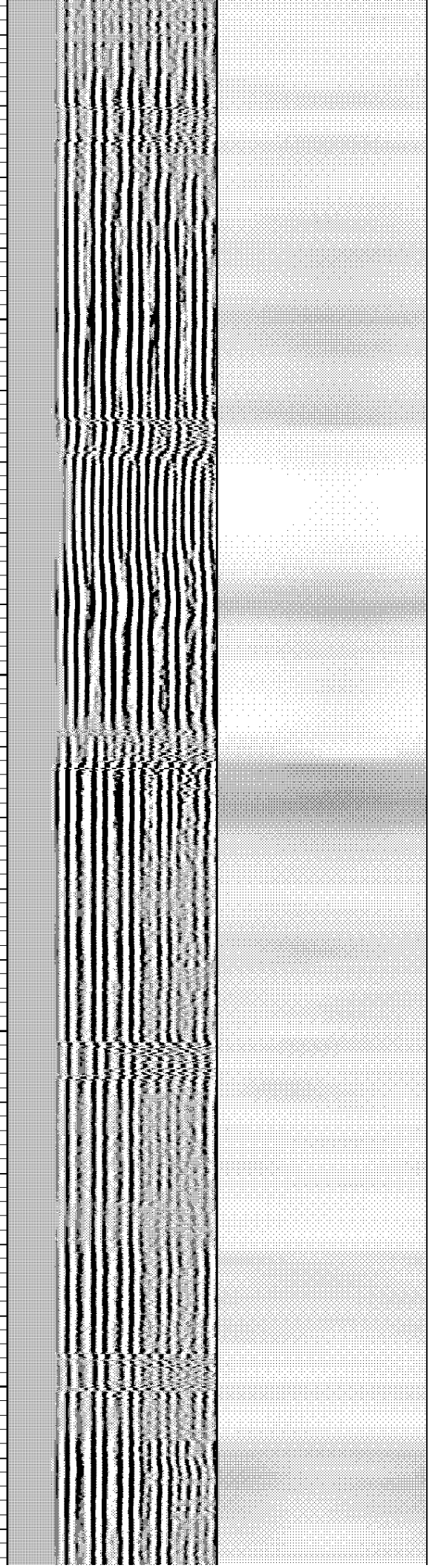
2150

129.036

130.405

131.835

133.172



2200

2250

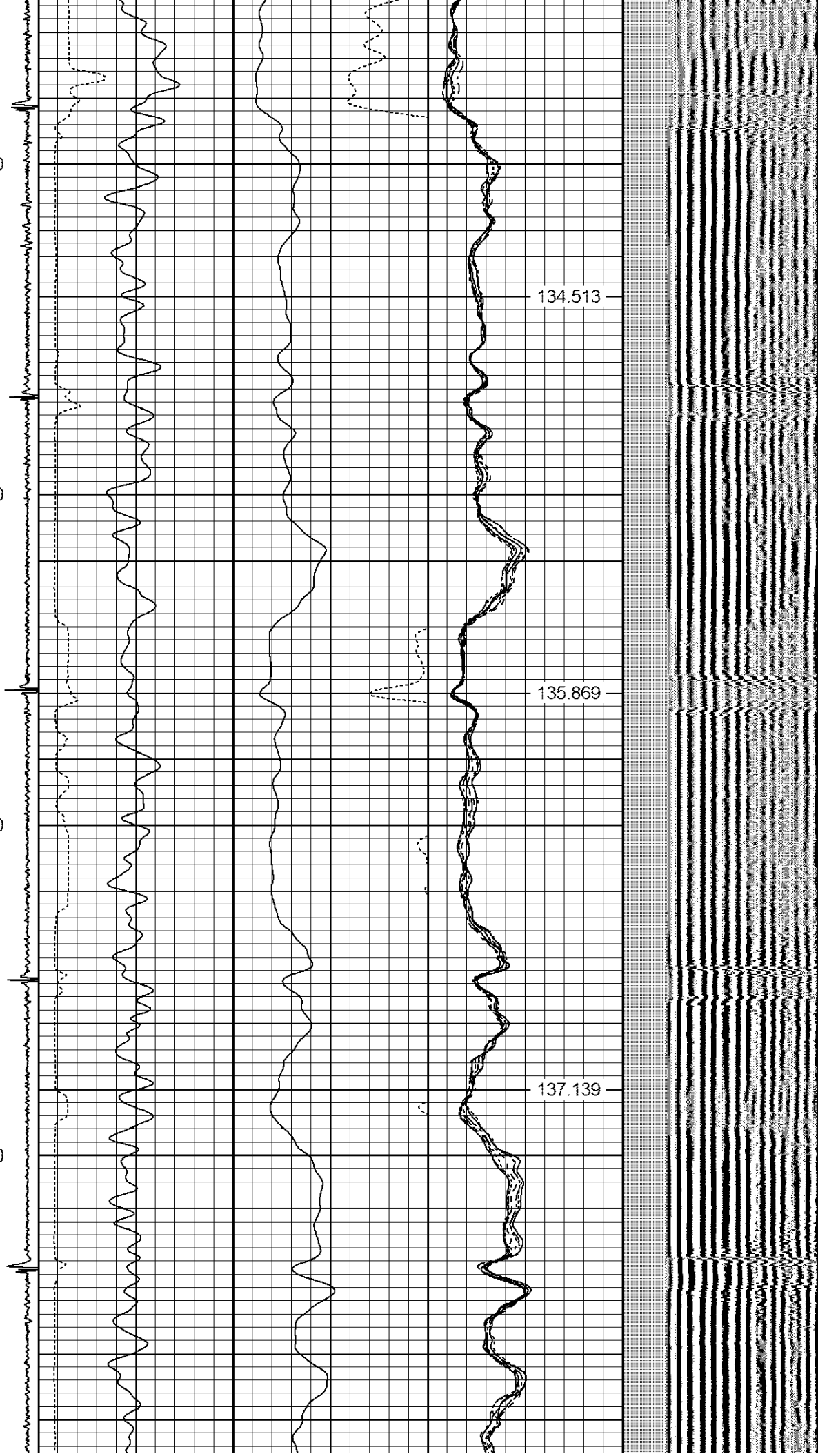
2300

2350

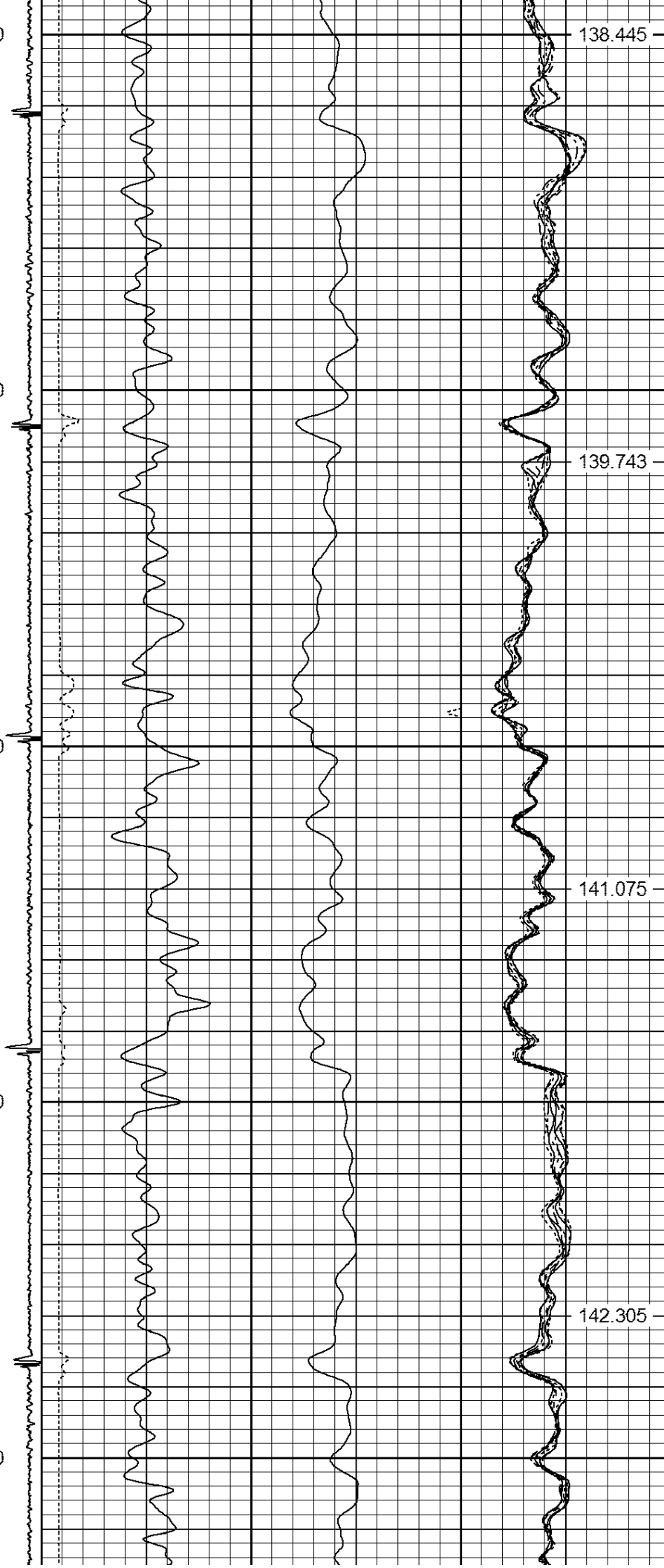
134.513

135.869

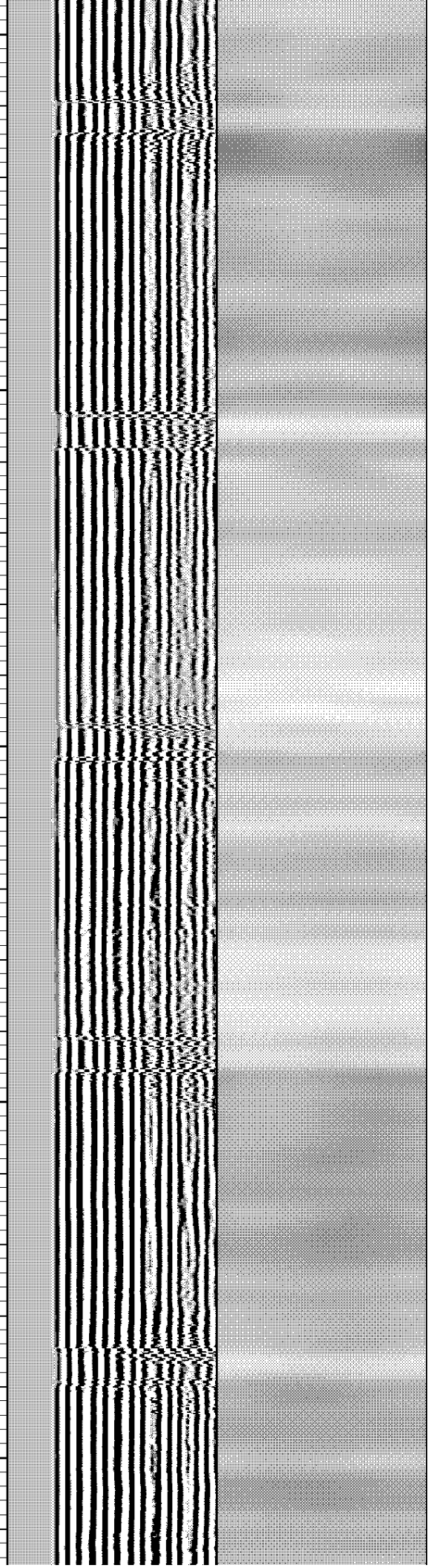
137.139



2400
2450
2500
2550
2600



138.445
139.743
141.075
142.305



2650

2700

2750

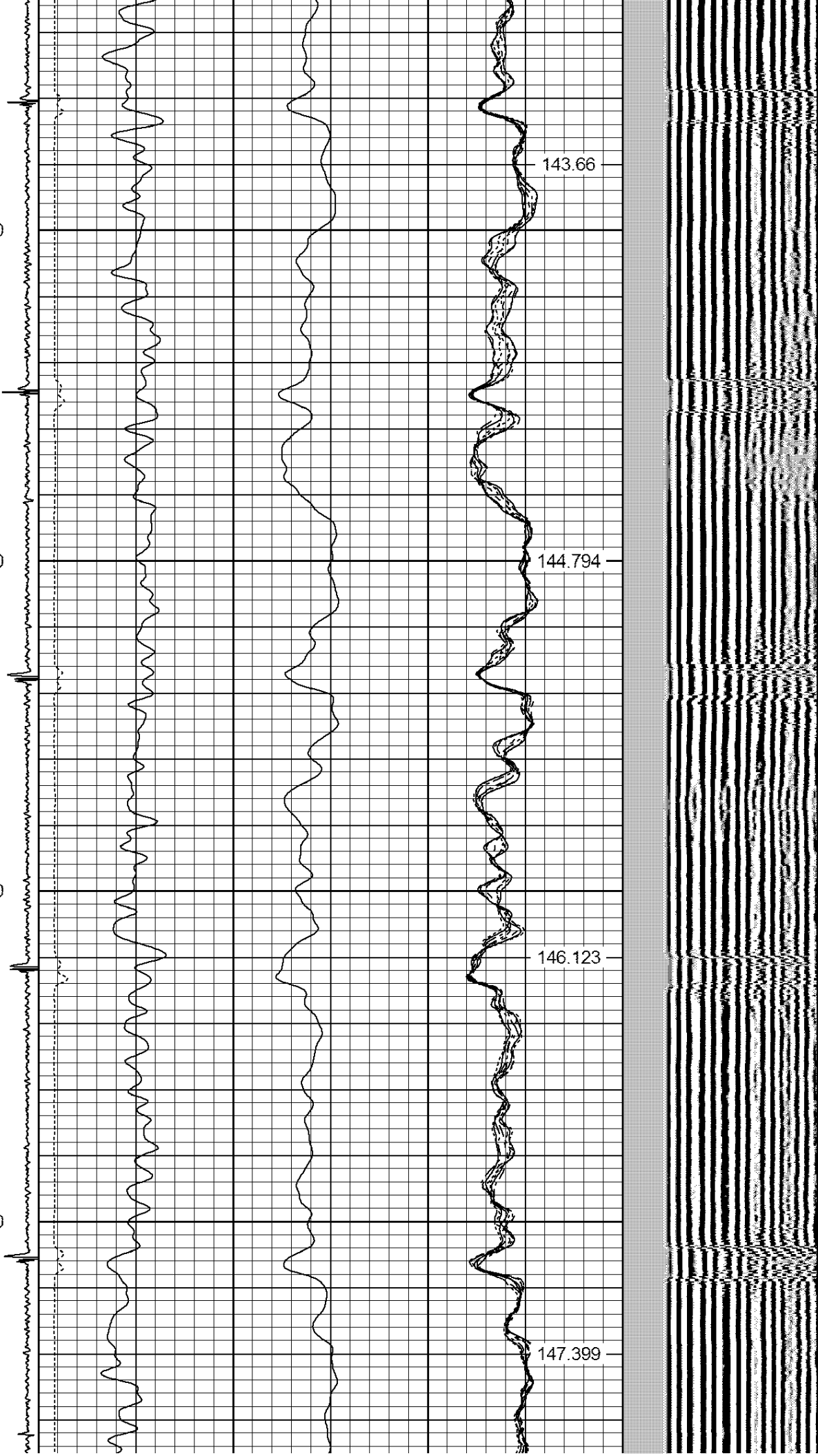
2800

143.66

144.794

146.123

147.399



2850

2900

2950

3000

3050

148.761

149.968

151.196



3100

3150

3200

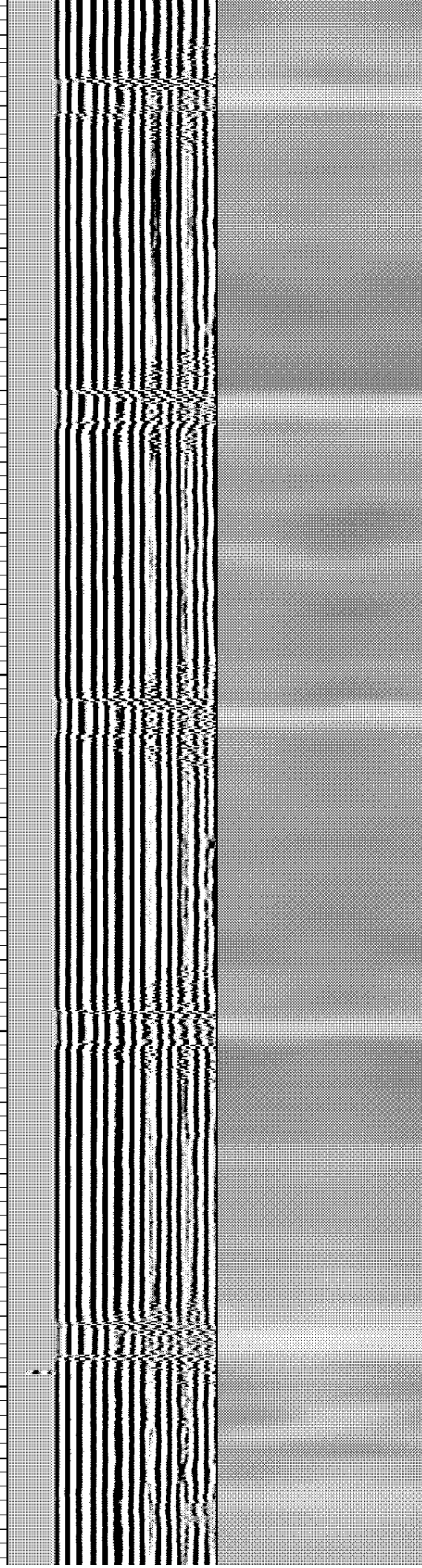
3250

152.451

153.738

155.065

156.308



3300

3350

3400

3450

157.621

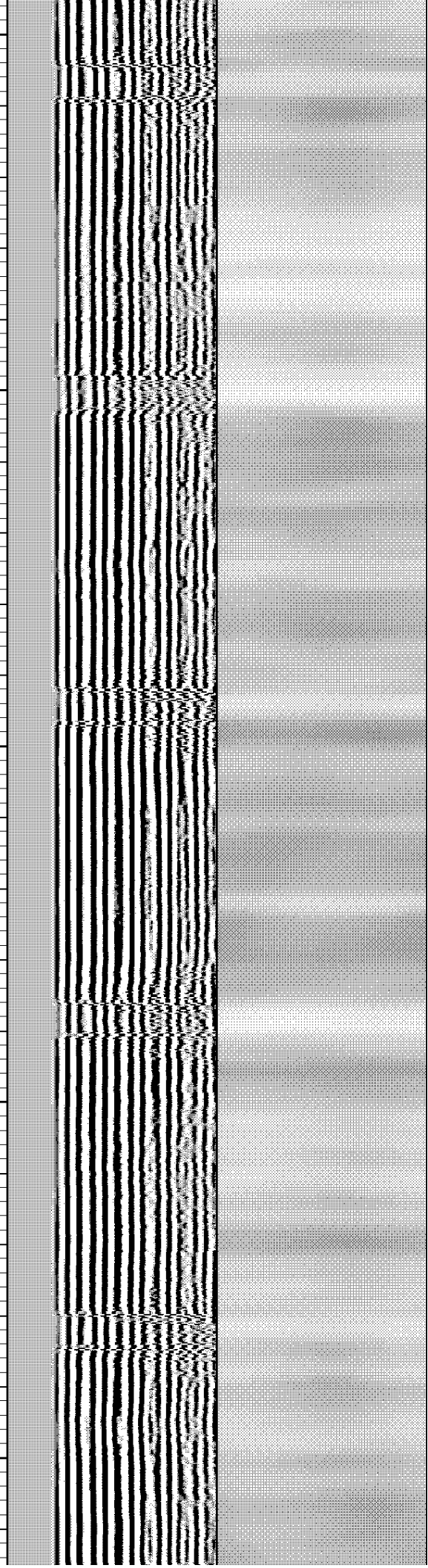
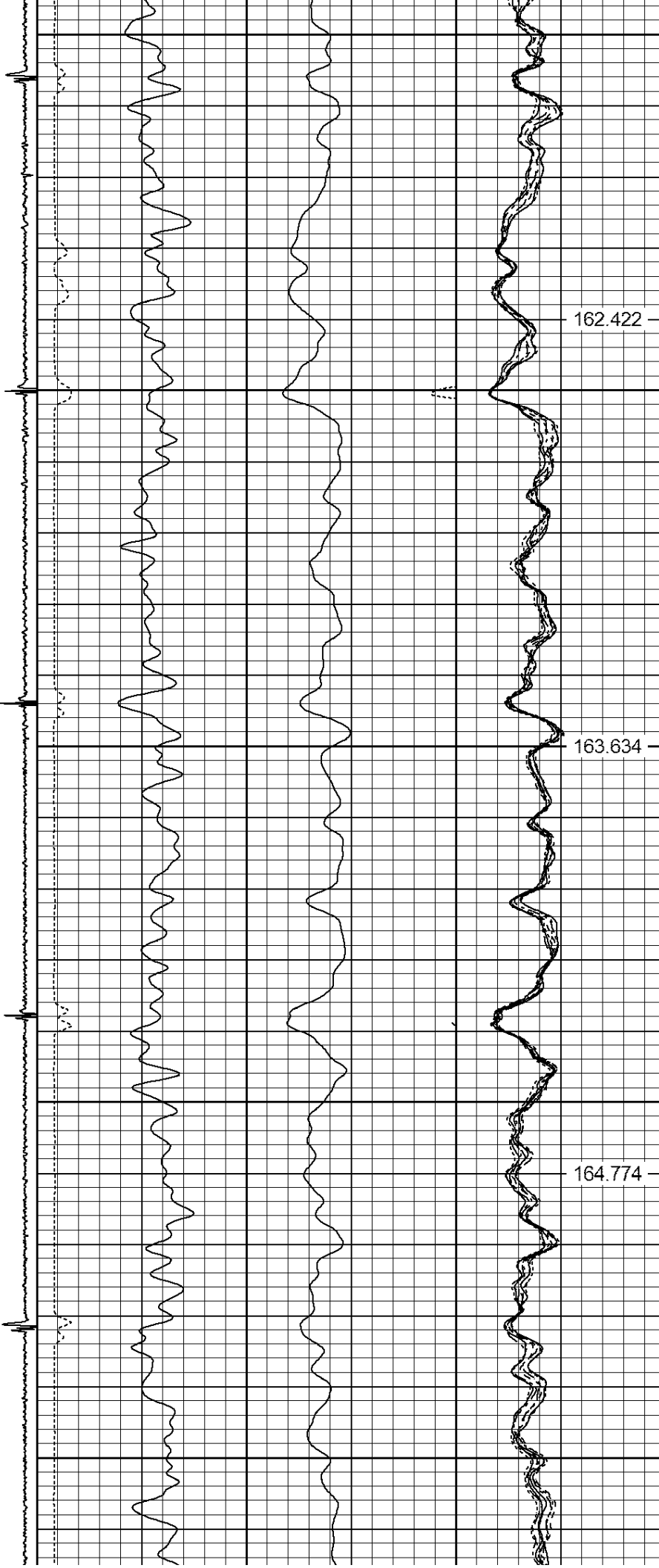
158.739

160.015

161.301



3500
3550
3600
3650
3700



3750

3800

3850

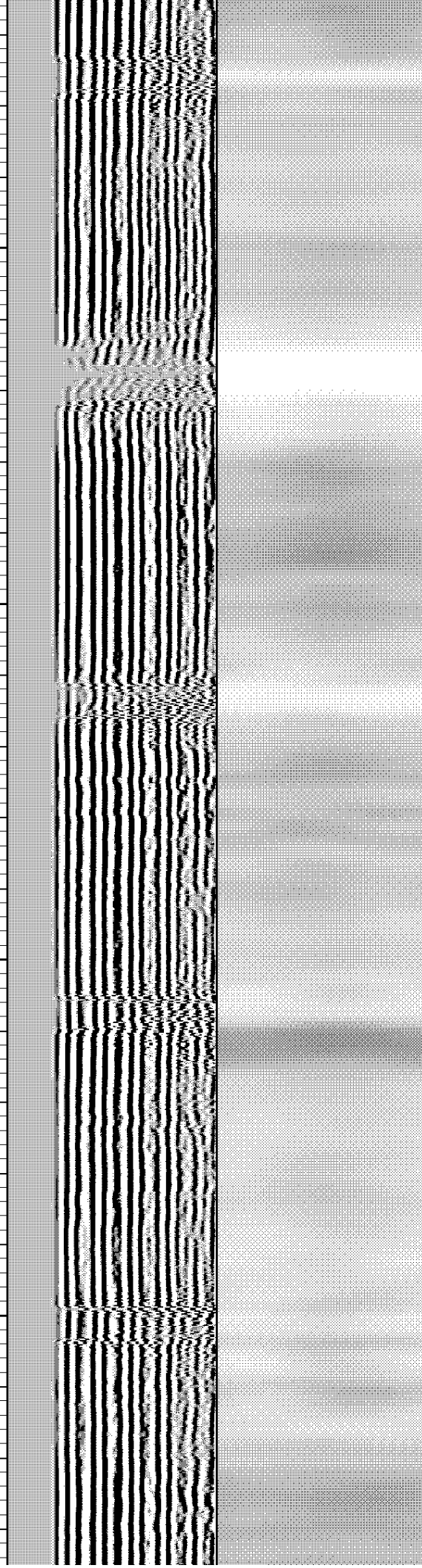
3900

165.842

166.832

167.907

168.951



3950

4000

4050

4100

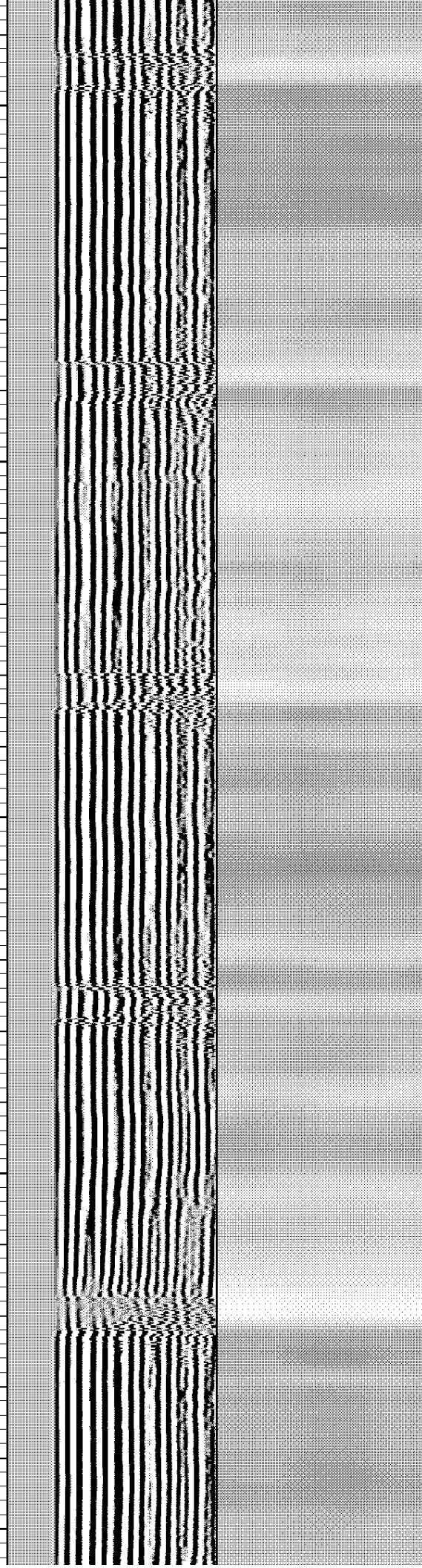
4150

170.051

171.17

172.245

173.403



4200

174.616

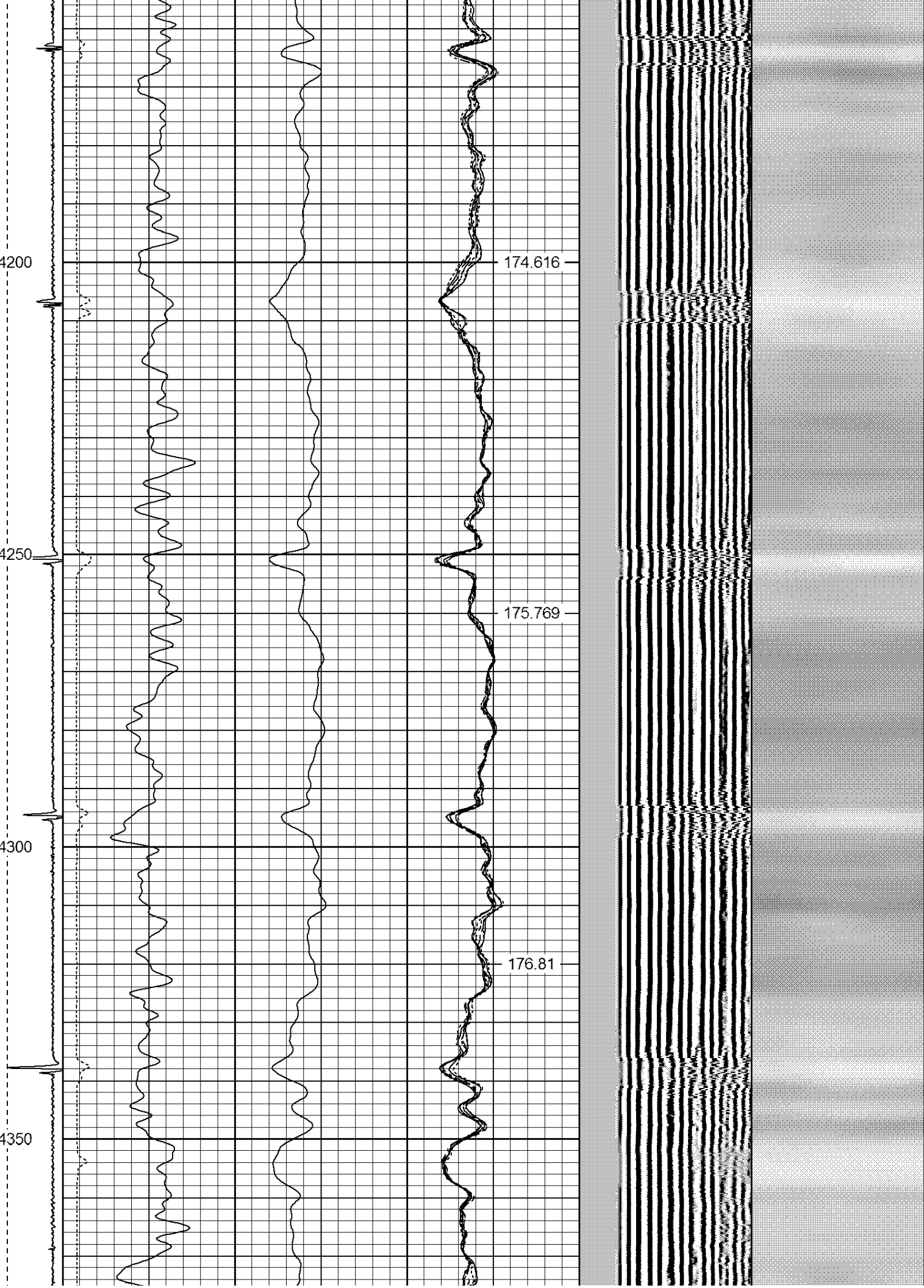
4250

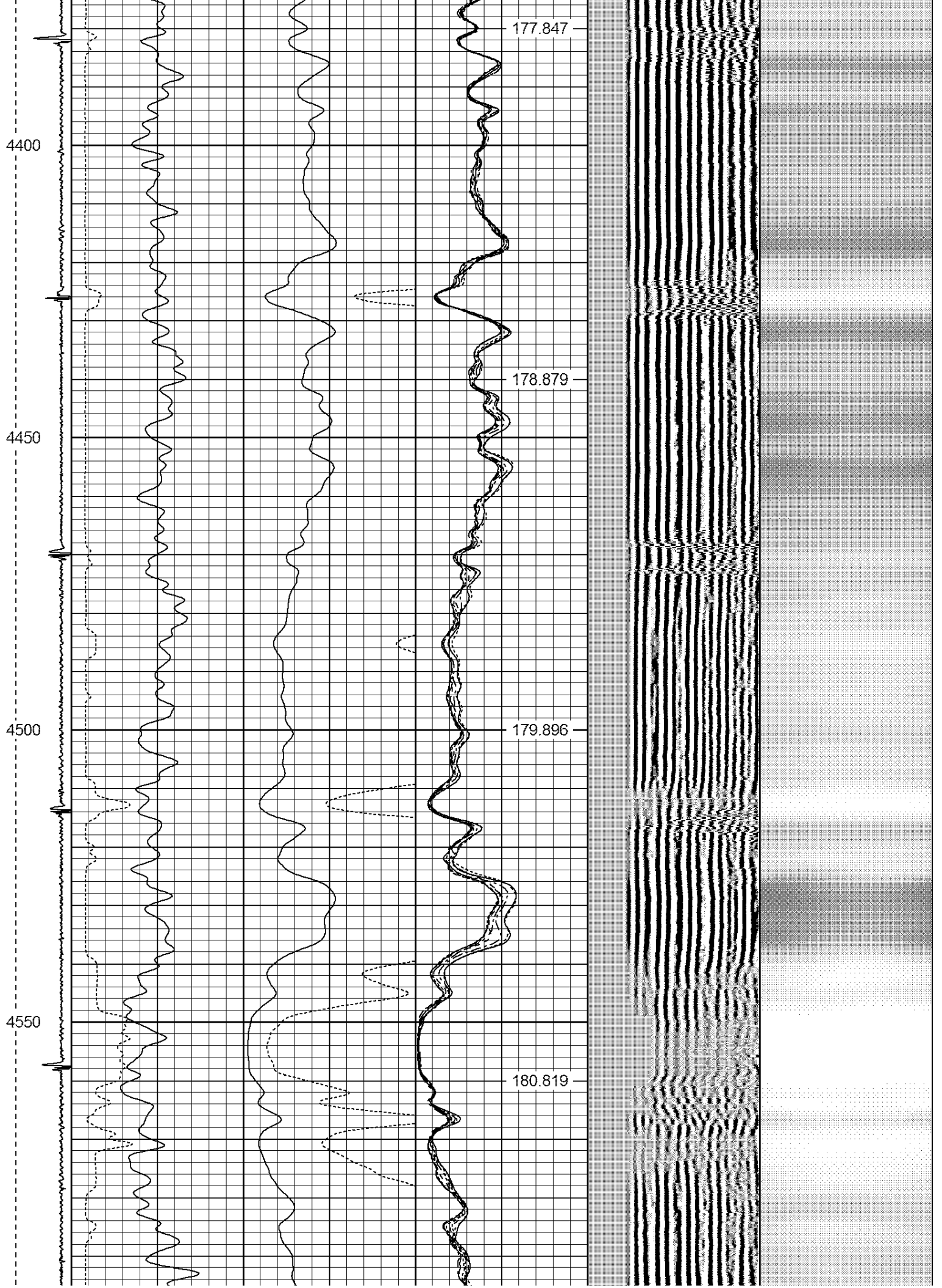
175.769

4300

176.81

4350





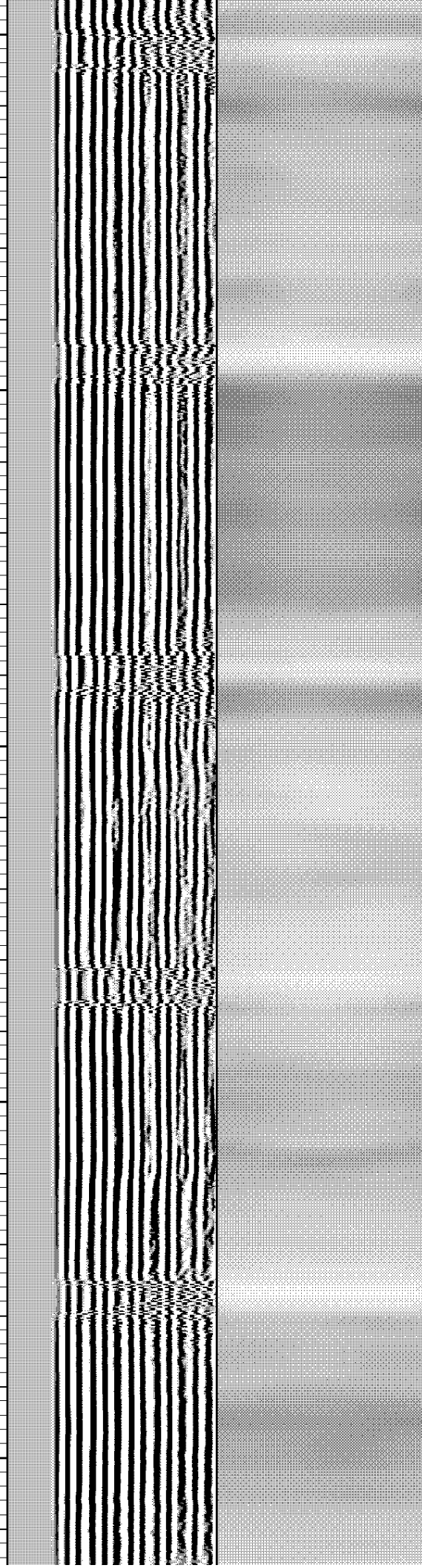
4600
4650
4700
4750
4800

181.896

182.924

183.918

184.886



4850

4900

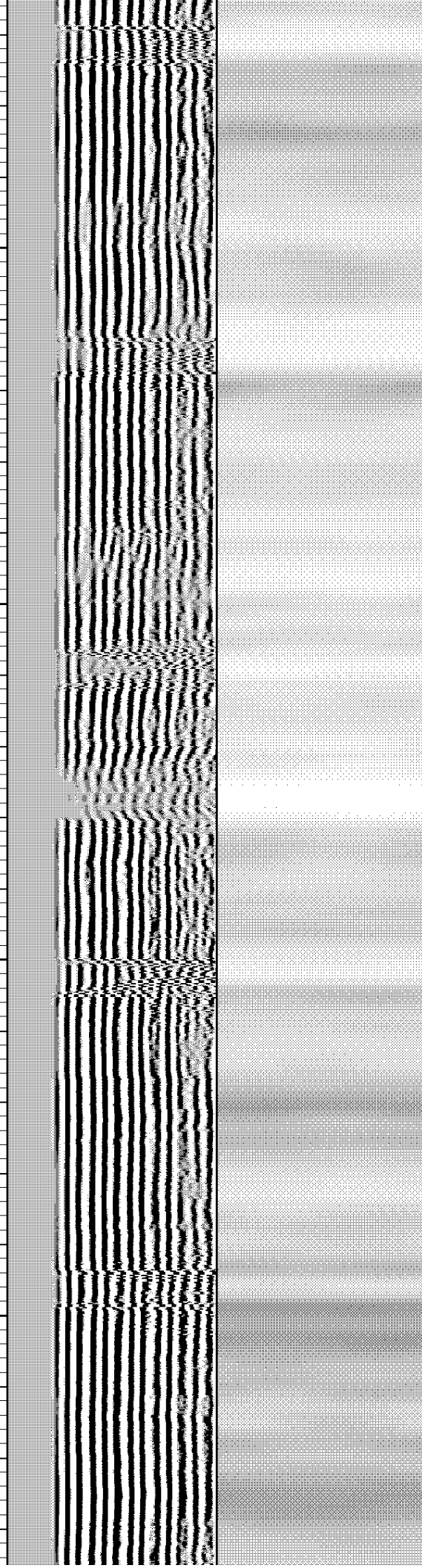
4950

5000

185.762

186.767

187.661



5050

5100

5150

5200

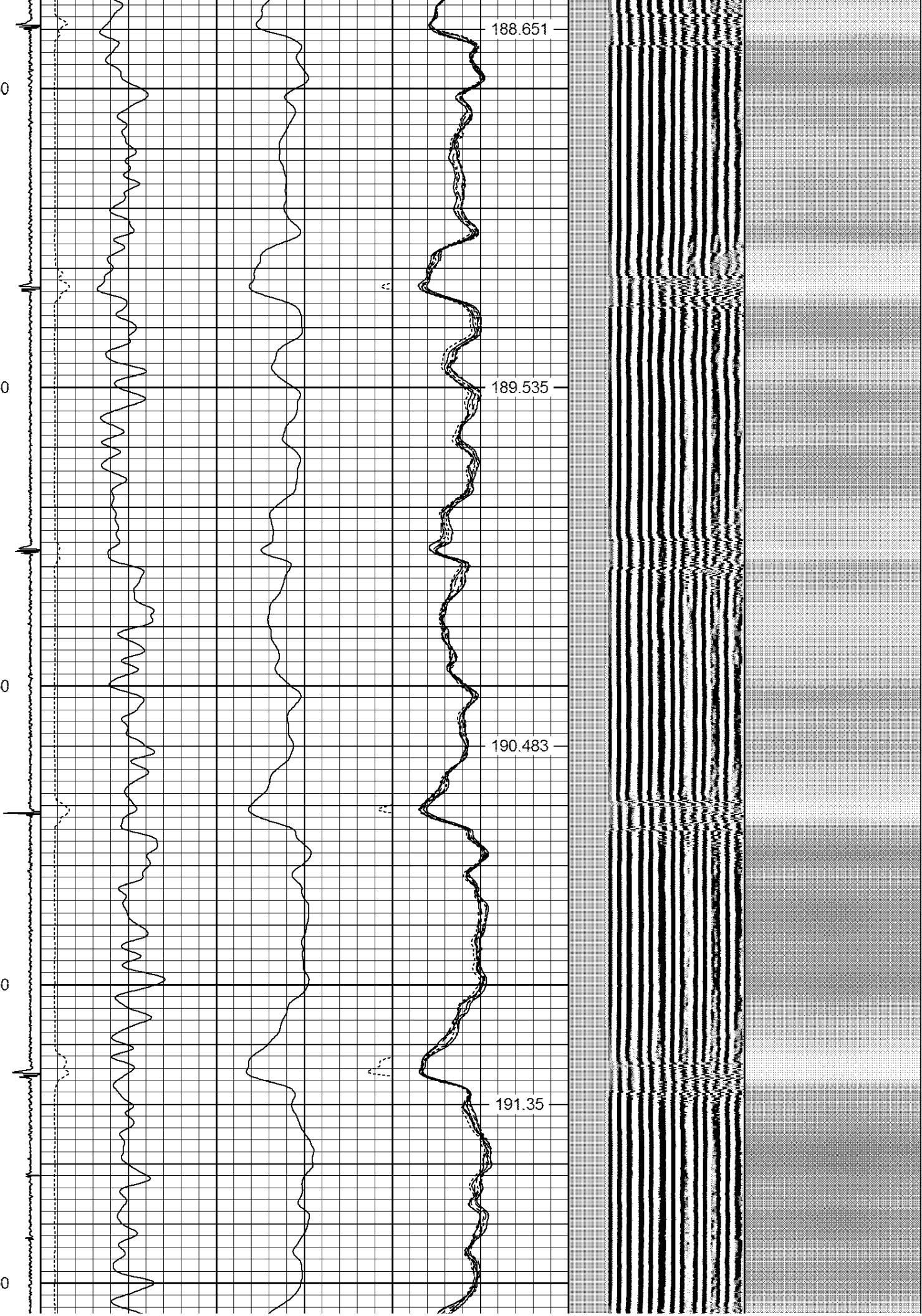
5250

188.651

189.535

190.483

191.35



5300

5350

5400

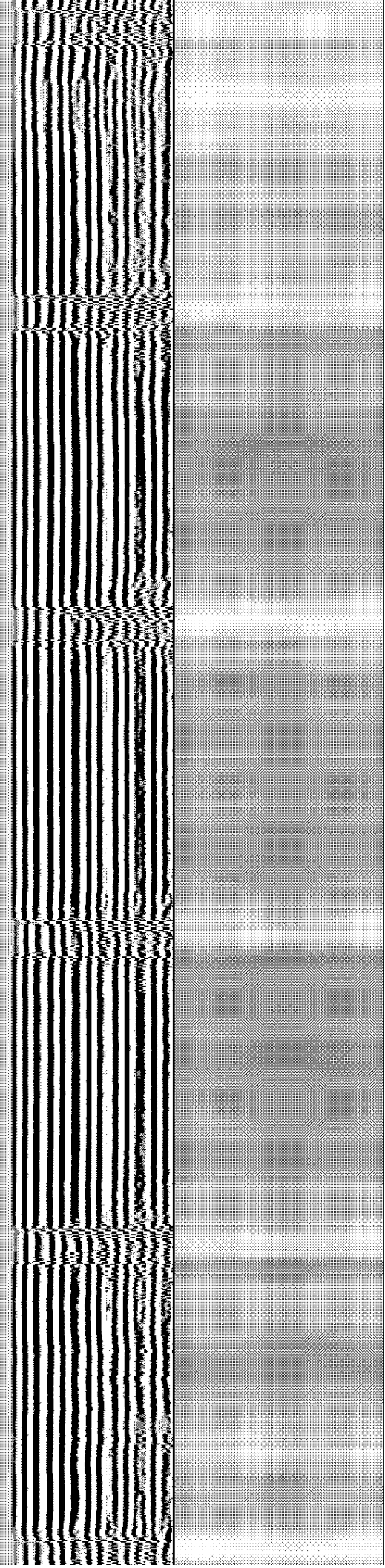
5450

192.173

192.984

193.885

194.626



5500

5550

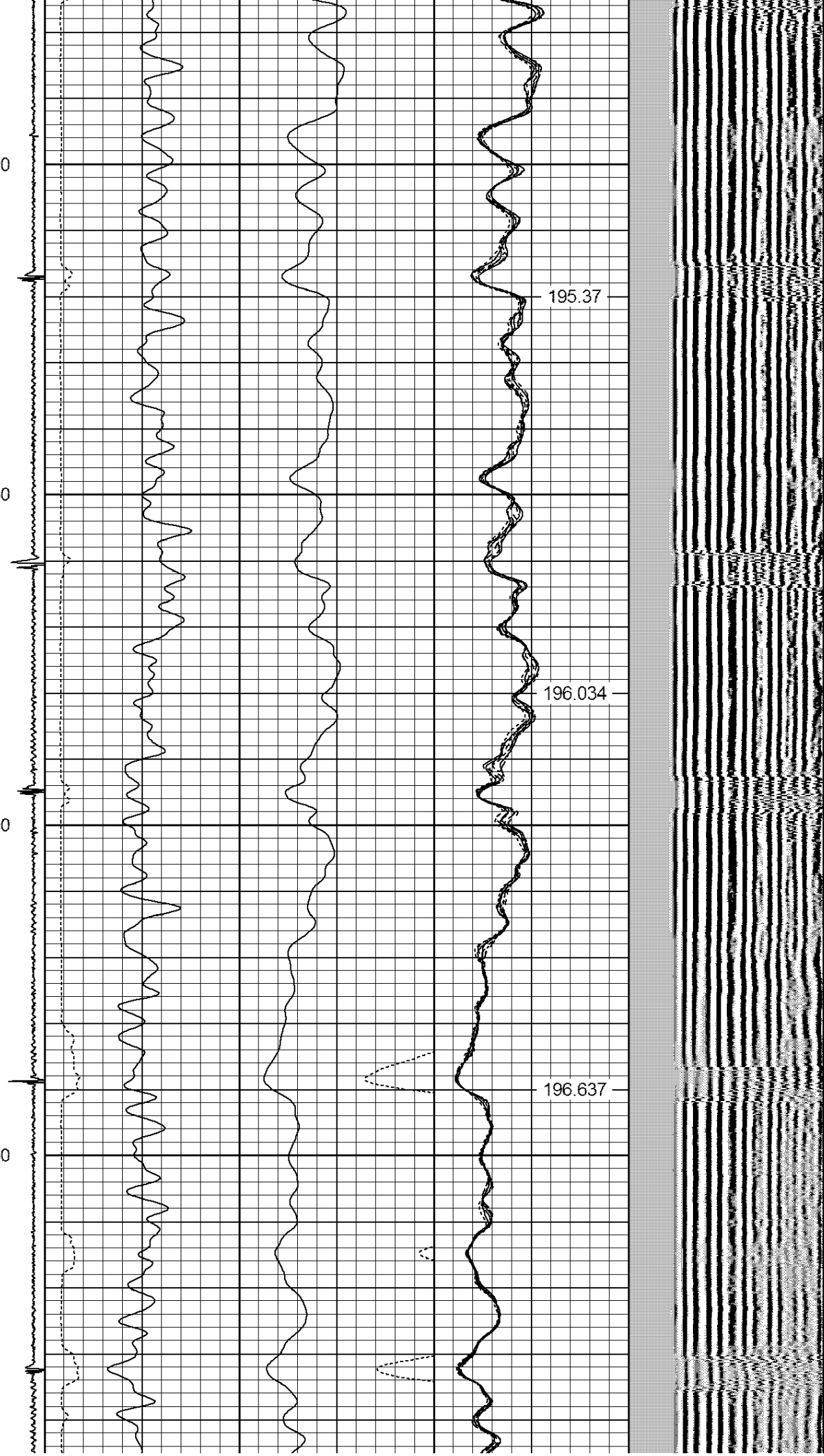
5600

5650

195.37

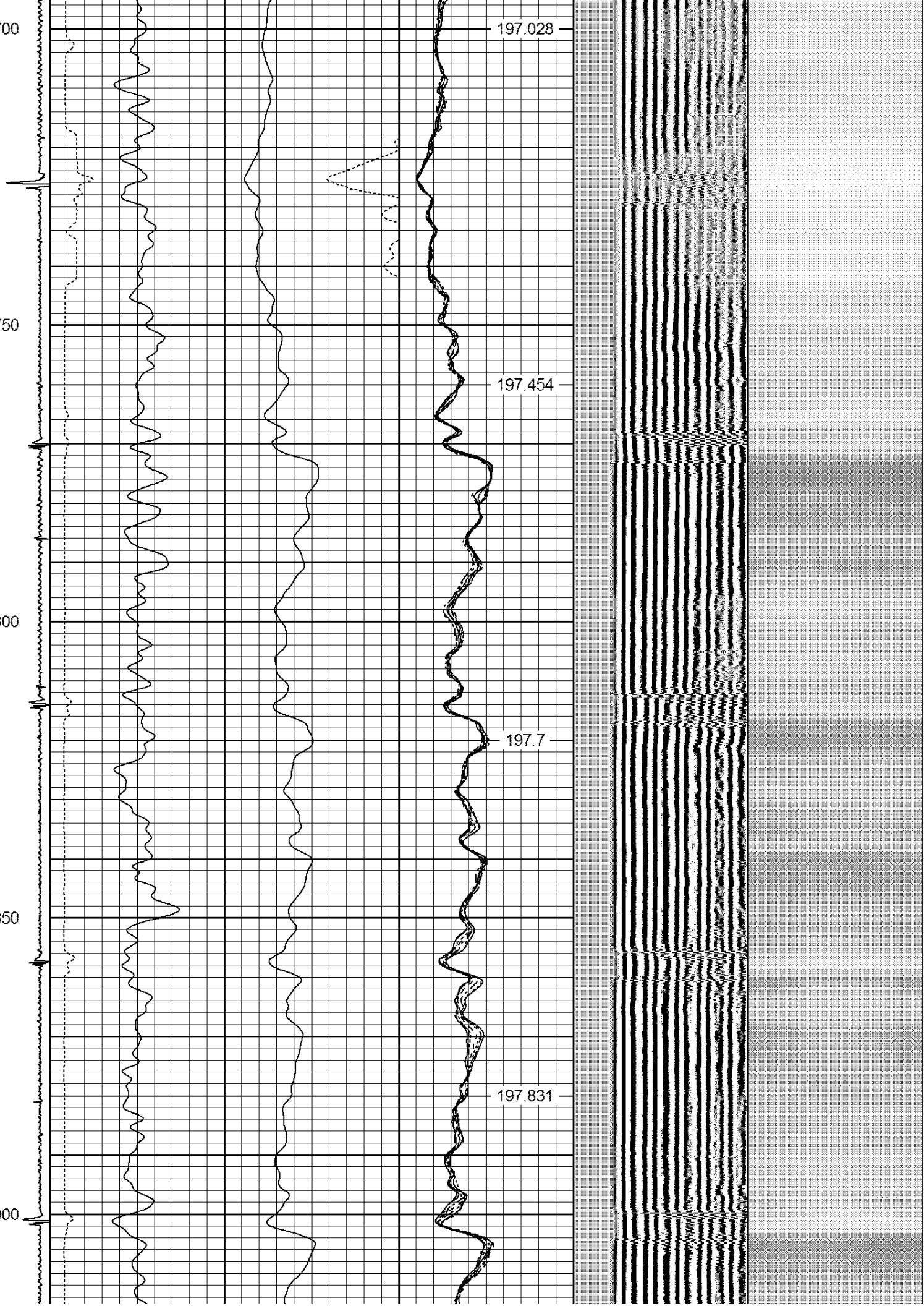
196.034

196.637



5700
5750
5800
5850
5900

197.028
197.454
197.7
197.831



5950

6000

6050

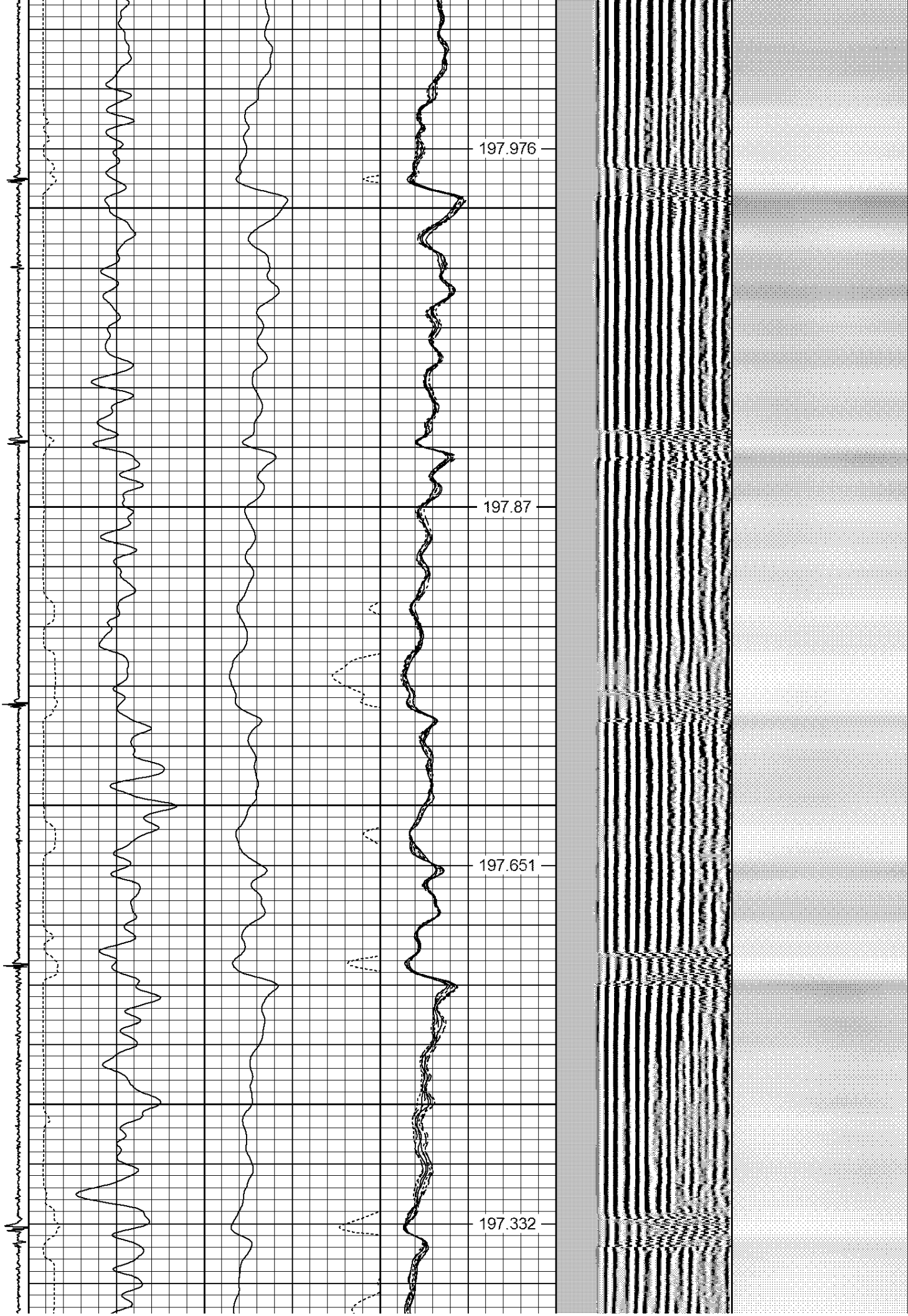
6100

197.976

197.87

197.651

197.332



6150

6200

6250

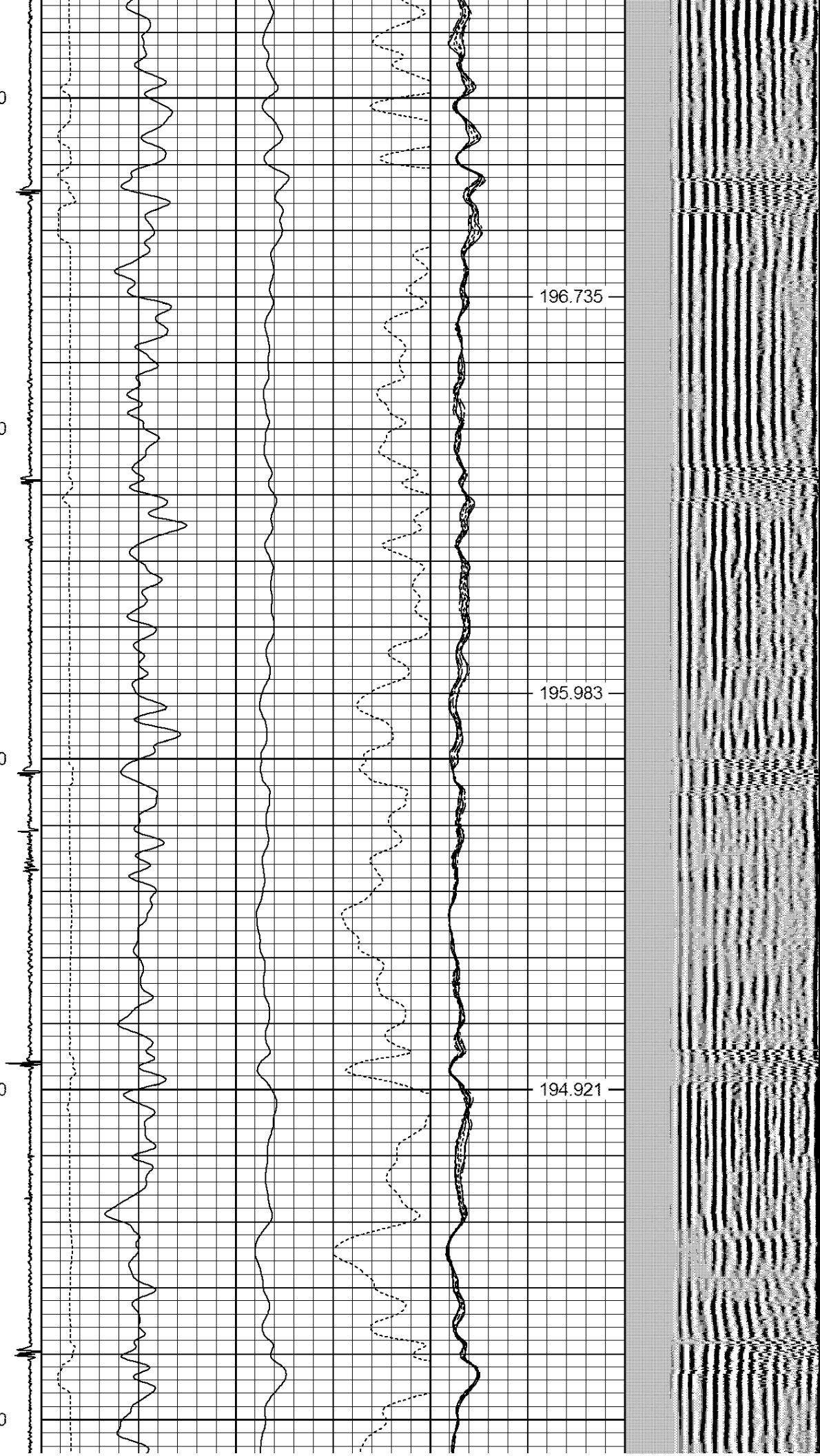
6300

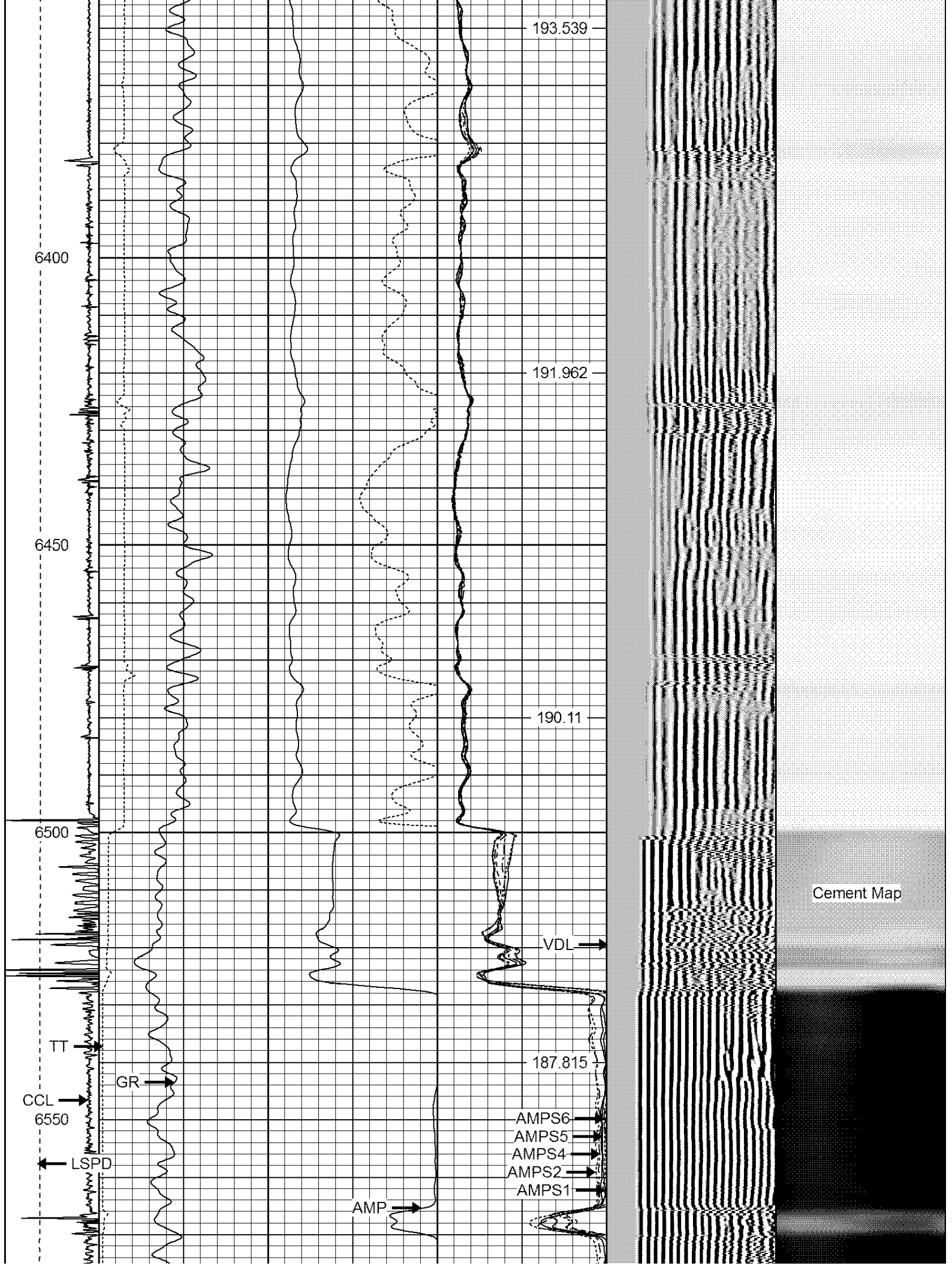
6350

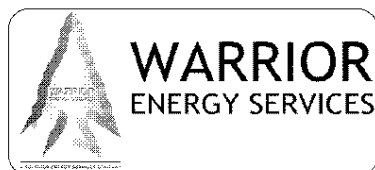
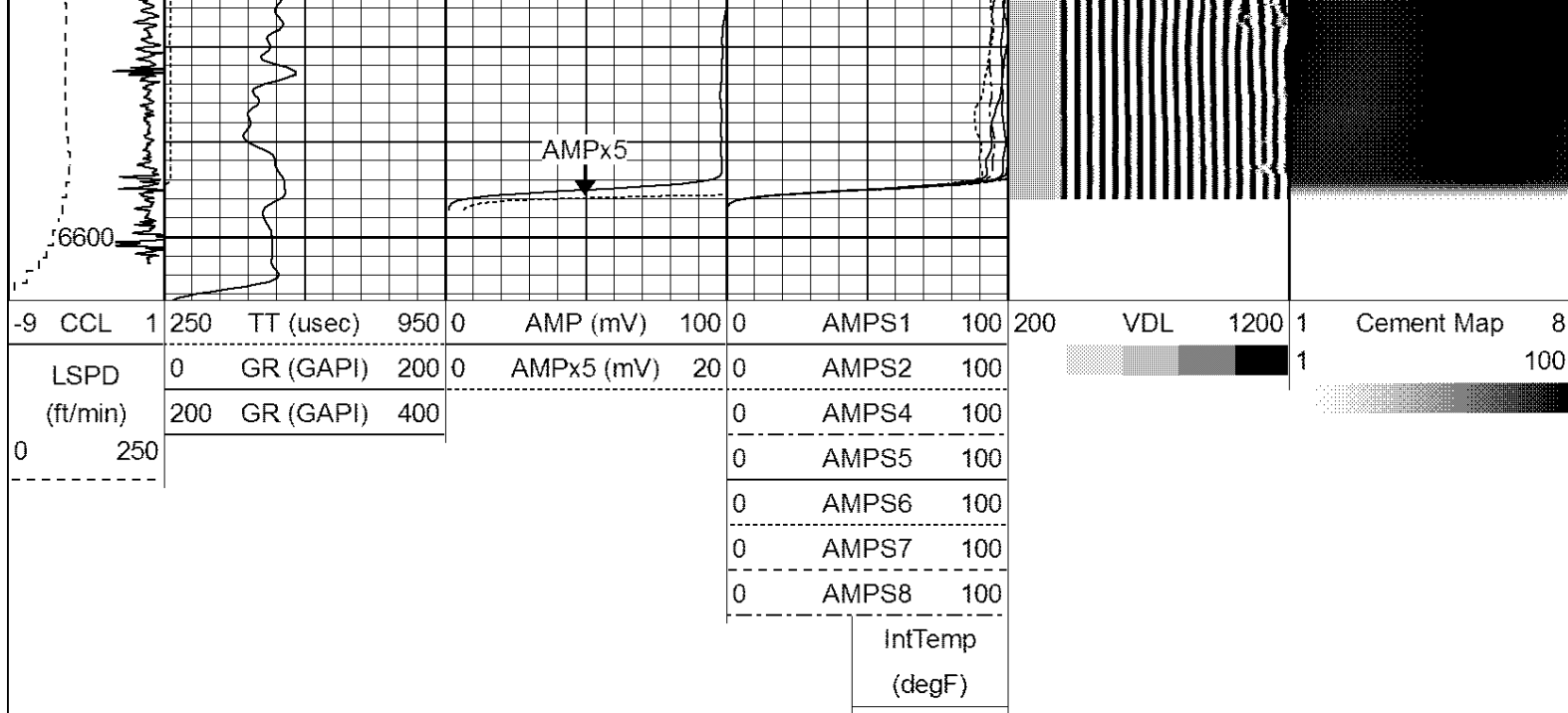
196.735

195.983

194.921

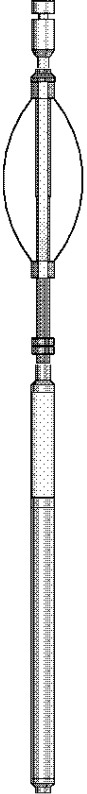






TOOL STRING DIAGRAM

Sensor	Offset (ft)	Schematic	Description	Len (ft)	OD (in)	Wt (lb)
HEADVOLT	16.25		PTS275	2.83	2.75	
IntTemp	14.83					
WVF3FT	11.58		RBT-Probe (Base) Probe Radii Bond Tool with Digital Telemetry	8.92	2.75	90.00
WVFCAL	11.58					
WVFS1	11.58					
WVFS2	11.58					
WVFS3	11.58					
WVFS4	11.58					
WVFS5	11.58					
WVFS6	11.58					
WVFS7	11.58					
WVFS8	11.58					

WVF5FT	10.58						
CNLSC	6.00			CNT-Probe_B (275) 6 bow centralizer	3.00	2.75	40.00
CNSSC	5.17						
CCL	3.64						
GR	0.90			GR-Probe (275) Probe 2.75"	4.33	2.75	30.00
<div>Dataset: bbc merritt 6-66-9-0560ch.db: field/well/run1/pass33</div> <div>Total Length: 19.08 ft</div> <div>Total Weight: 160.00 lb</div> <div>O.D. 2.75 in</div>							

	CompanyBILL BARRETT CORPORATION					
	Well MERRITT 6-66-9-0560CH					
	Field Wattenberg Field					
	County WELD					
	State COLORADO					