

COLUMBINE LOGGING

Scale: 5" / 100'
Measured Depth Log

Well Name Merritt 6-66-9-0560CH

Location NWNE SEC 9, T6N, R66W

State COLORADO

County WELD

Country USA

Rig Number NABORS M22

API Number 05-123-37692-00

AFE # 18461D

Region DJ BASIN

Field WATTENBERG

Spud Date 9/1/2013

Drilling Completed 9/9/2013

Surface Coordinates 260' FNL x 2140' FEL

Bottom Hole Coordinates 500' FSL x 2280' FEL

Ground Elevation 4822'

K.B. Elevation 4844'

Logged Interval 4000' To 11707'

Total Depth 11707'

Formation SUSSEX - SHANNON

Type of Drilling Fluid LSND - WATER POLY MUD

Rock Types

UNKNOWN

ANHYDRITE
BENTONITE
BRECCIA
CEMENT
CHALK
CHERT
CLAY CHOKE SAND
CLAYSTONE

COAL

CONGLOMERATE
DOLOMITE
GRANITE
GYPSUM
IGNEOUS
LIMESTONE
SIDERITE or LIMONITE
MARLSTONE

METAMORPHIC

NO SAMPLE
SALT
SALT- PEPPER SAND
SANDSTONE
SHAPE
SHAPE COLORED
SHAPE GRAY
SHALY SANDSTONE

SHALY SILTSTONE

SILTSTONE
SILTY SHALE
TILL
TUFF
WELDED TUFF

Accessories

Fossils

ALGAE
AMPHIPORA
BELEMNITE
BIOCLASTIC
BRACHIOPOD
BRYOZOA
CEPHALOPOD
CORAL
CRINOID
ECHINOID
FISH
FORAMINIFERA

FOSSIL

GASTROPOD
INOCERAMUS
OOLITE
OSTRACOD
PELECYPOD
PELLET
PISOLITE
PLANT REMAINS
PLANT SPORES
SCAPHOPOD
STROMATOPOROID

Minerals

ANHYDRITIC

ARGILLACEOUS
ARGILLITE GRAIN
BENTONITE
BITUMENOUS SUBSTANCE
BRECCIA FRAGMENTS
CALCAREOUS
CARBONACEOUS FLAKES
CHTDK
CHTLT
COAL - THIN BEDS
DOLOMITIC
FELDSPAR
FERRUGINOUS PELLET

FERRUGINOUS

GLAUCONITE
GYPSIFEROUS
HEAVY MINERAL
KAOLIN
MARLSTONE
MINERAL CRYSTALS
NODULES
PHOSPHATE PELLETS
PYRITE
SALT CAST
SANDY
SILICEOUS
SILTY

TUFFACEOUS

Stringer

ANHYDRITE STRINGER
BENTONITE STRINGER
COAL STRINGER
DOLOMITE STRINGER
GYPSUM STRINGER
LIMESTONE STRINGER
MARLSTONE (CALC) STRG
MARLSTONE (DOL) STRG
SANDSTONE STRINGER
SHALE STRINGER
SILTSTONE STRINGER

Other Symbols

Oil Show

- DEAD
- EVEN
- QUESTIONABLE
- SPOTTED STAINING

Porosity

- E EARTHY
- F FENESTRAL
- F FRACTURE
- X INTERCRYSTALLINE
- Φ INTEROOLITIC

- MOLDIC
- ORGANIC
- P PINPOINT
- VUGGY

Engineering

- BIT
- CONNECTION (LEFT)
- CONNECTION (RIGHT)
- CONNECTION GAS
- CORE - LOST
- CORE - RECOVERED
- DST INTERVAL

- FAULT
- FORMATION TOP
- GAS SHOW
- MN DEPTH
- NORMAL FAULT
- OIL SHOW
- OVERTURNED STRATA
- REVERSE FAULT
- SIDEWALL CORE (LEFT)
- SIDEWALL CORE (RIGHT)
- SLIDE
- SURVEY
- TRIP GAS

- WIRELINE TESTED - LEFT
- WIRELINE TESTED - RT

Rounding

- ANGULAR
- ROUNDED
- SUBANG
- SUBRND

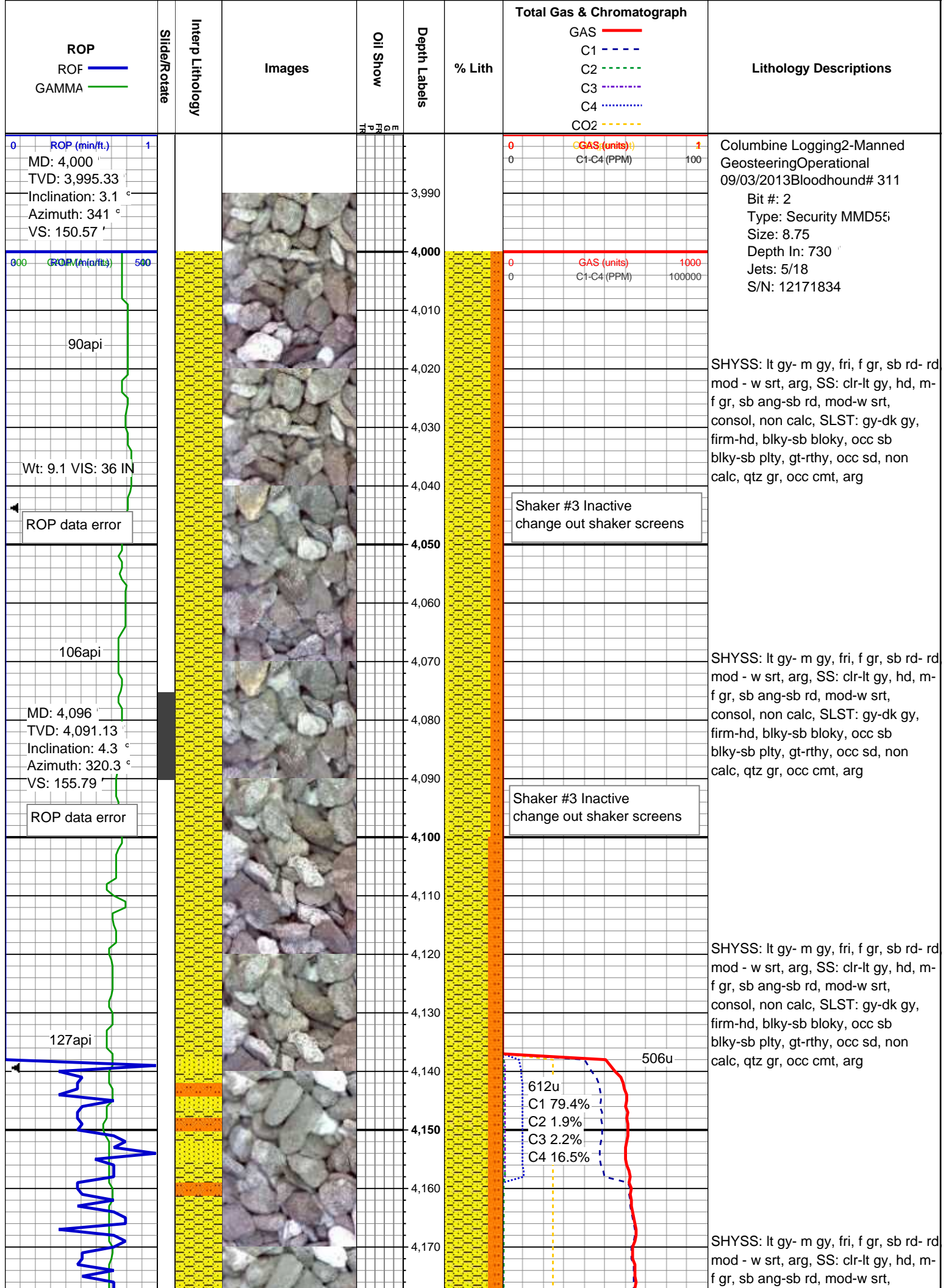
Textures

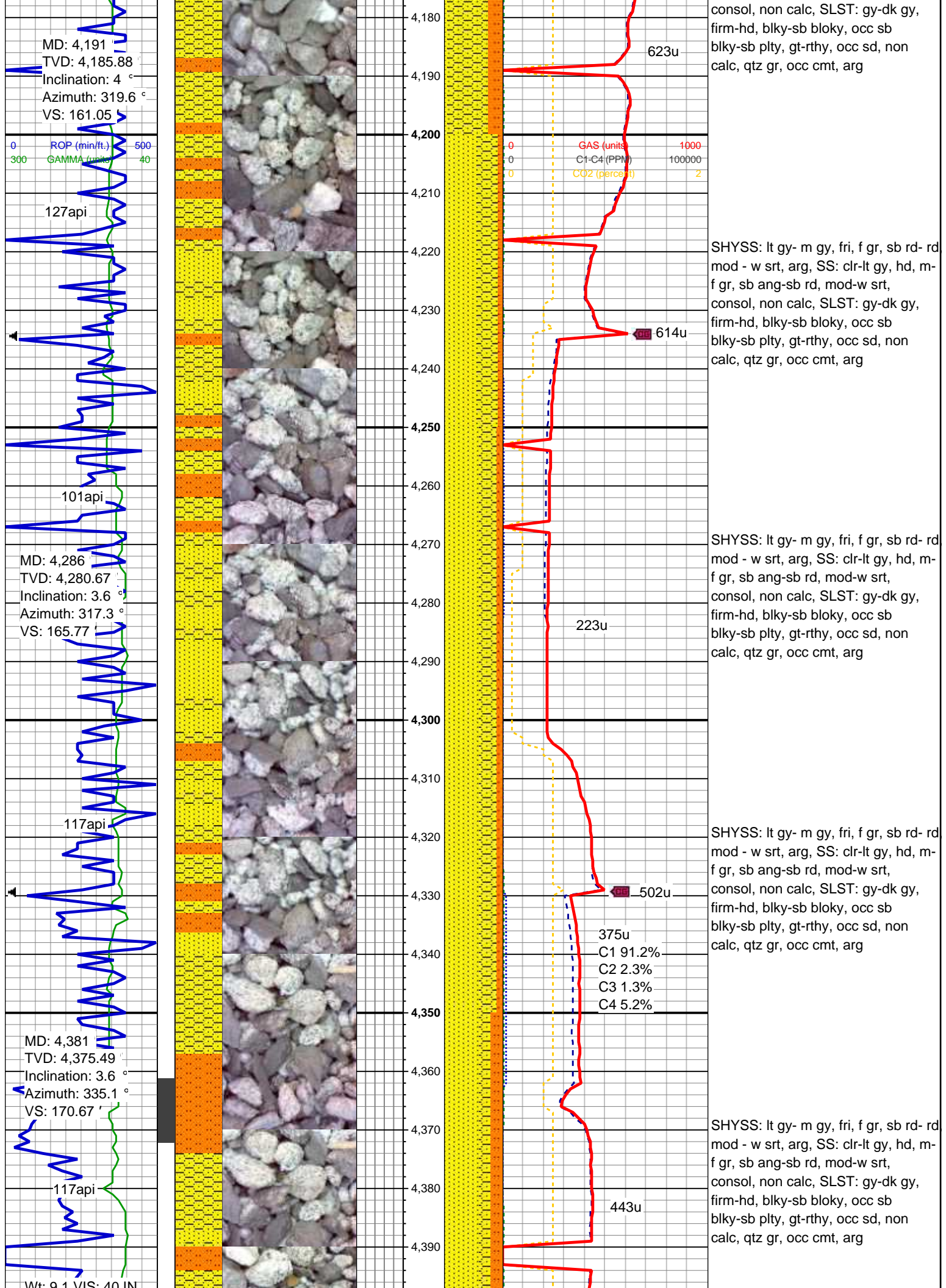
- BOUNDSTONE
- CHALKY
- CRYPTOXLN

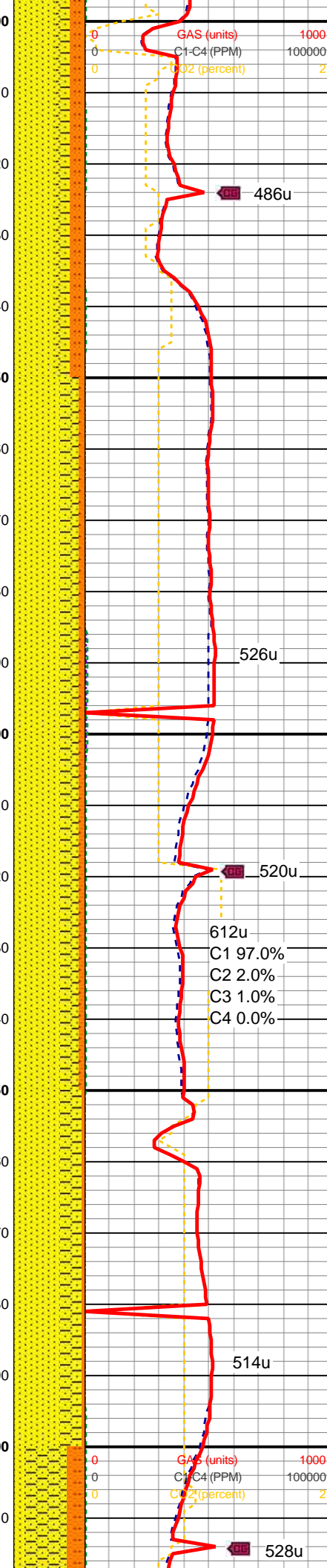
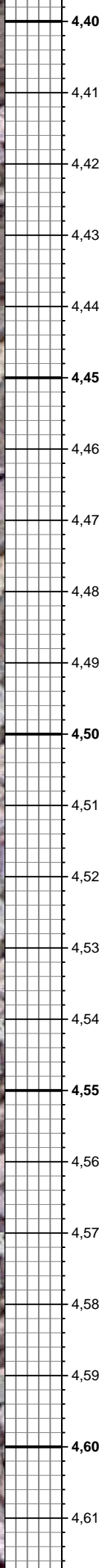
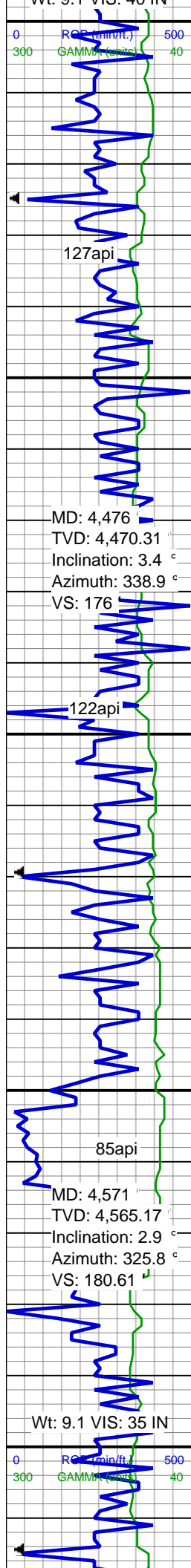
- E EARTHY
- FX FINELYXLN
- GS GRAINSTONE
- L LITHOGRAPHIC
- MX MICROXLN
- MS MUDSTONE
- PS PACKSTONE
- WS WACKESTONE

Sorting

- M MODERATE
- P POOR
- W WELL





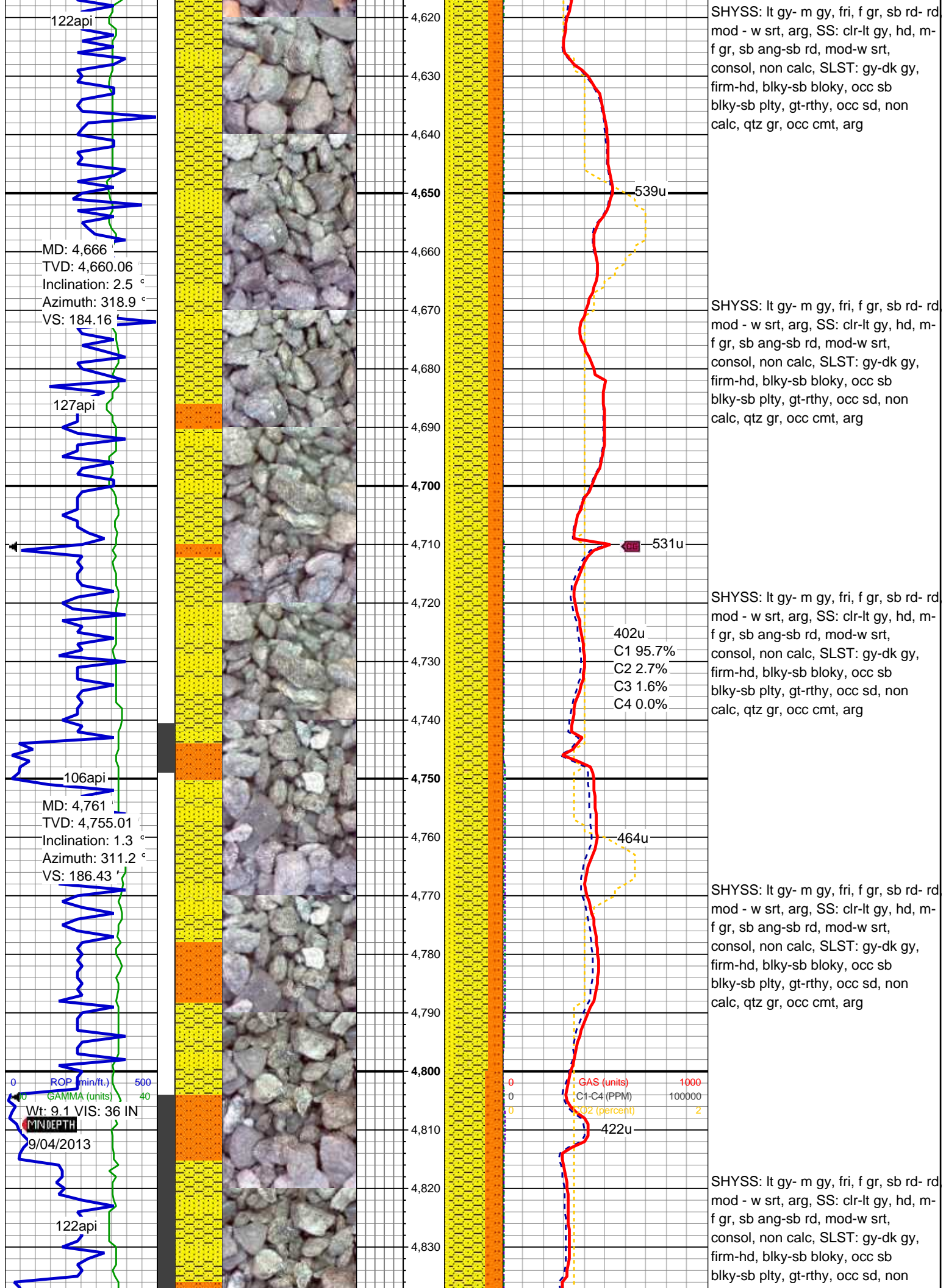


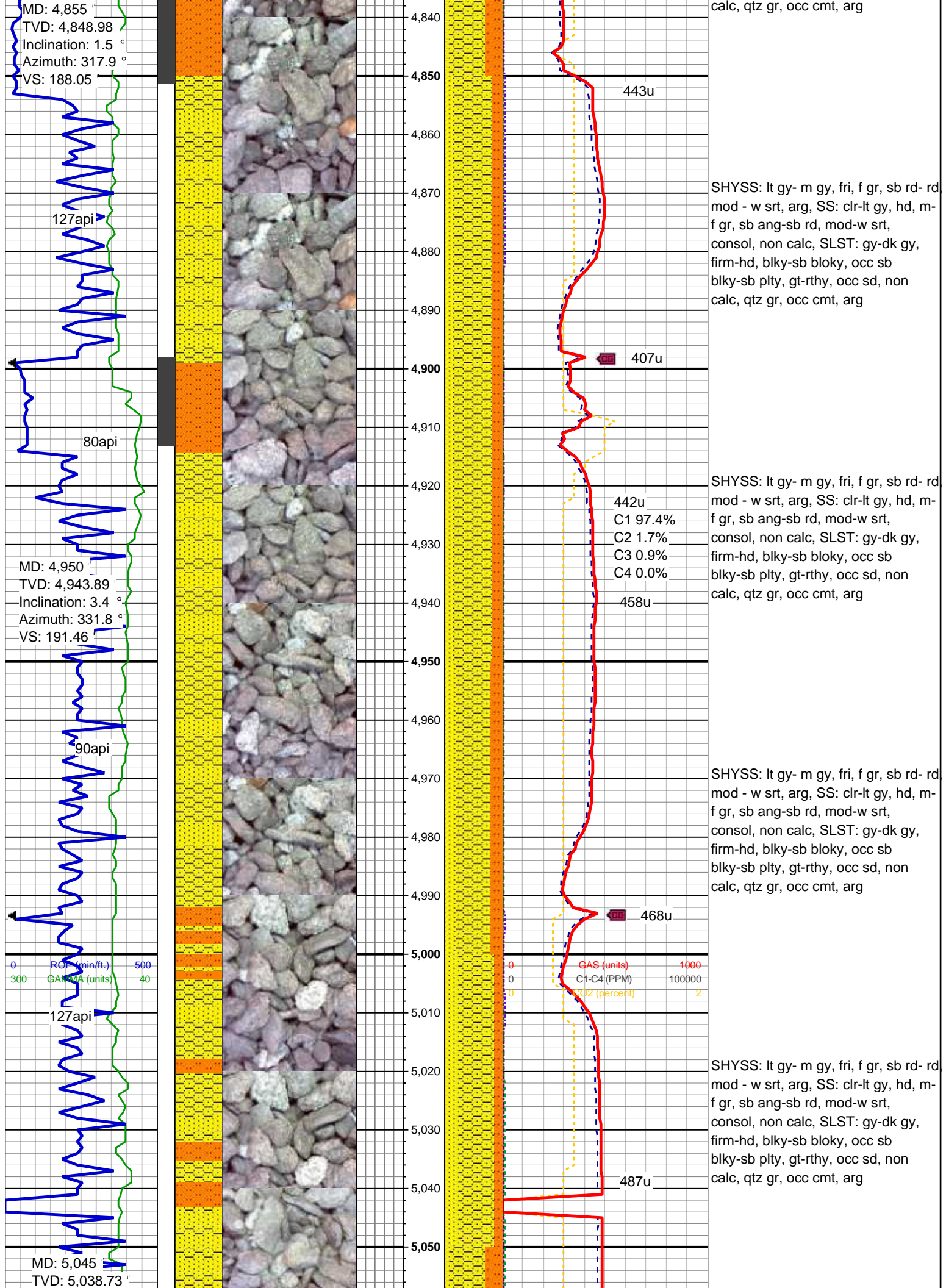
SHYSS: lt gy- m gy, fri, f gr, sb rd- rd mod - w srt, arg, SS: clr-lt gy, hd, m- f gr, sb ang-sb rd, mod-w srt, consol, non calc, SLST: gy-dk gy, firm-hd, blk-ly-sb bloky, occ sb blk-ly-sb plty, gt-rthy, occ sd, non calc, qtz gr, occ cmt, arg

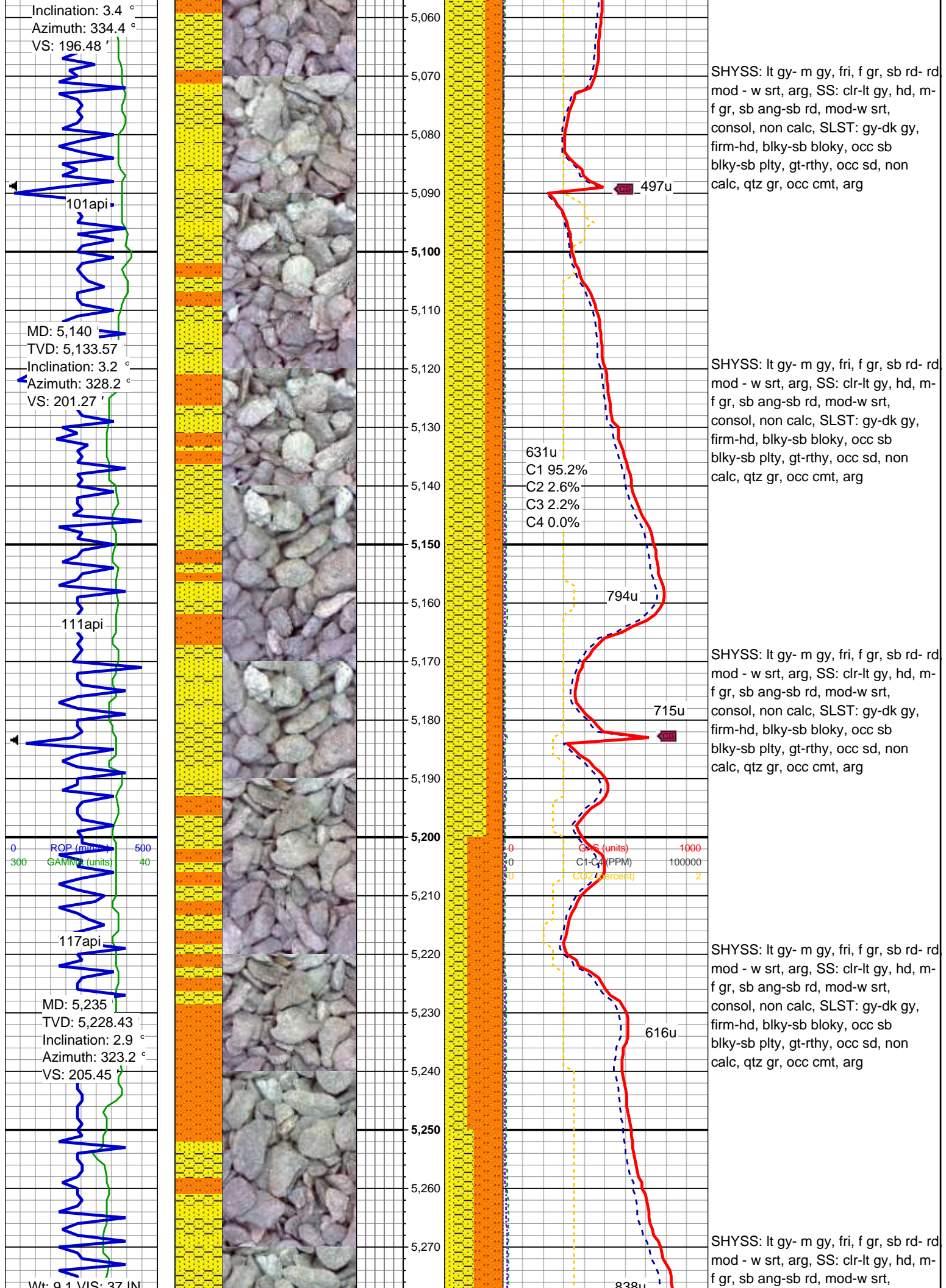
SHYSS: lt gy- m gy, fri, f gr, sb rd- rd mod - w srt, arg, SS: clr-lt gy, hd, m- f gr, sb ang-sb rd, mod-w srt, consol, non calc, SLST: gy-dk gy, firm-hd, blk-ly-sb bloky, occ sb blk-ly-sb plty, gt-rthy, occ sd, non calc, qtz gr, occ cmt, arg

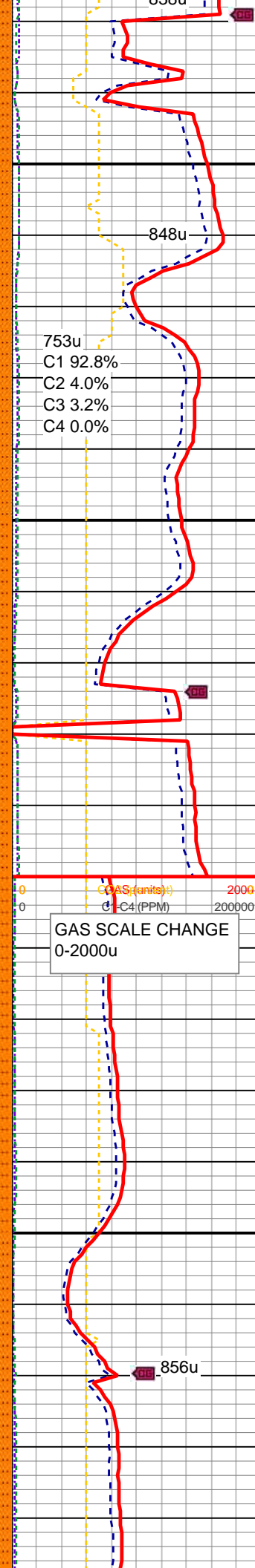
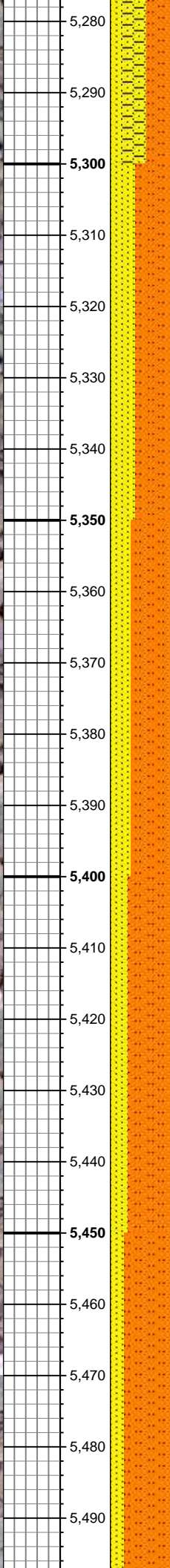
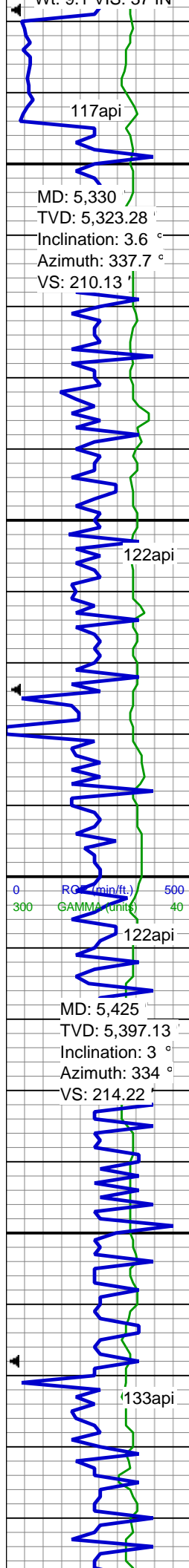
SHYSS: lt gy- m gy, fri, f gr, sb rd- rd mod - w srt, arg, SS: clr-lt gy, hd, m- f gr, sb ang-sb rd, mod-w srt, consol, non calc, SLST: gy-dk gy, firm-hd, blk-ly-sb bloky, occ sb blk-ly-sb plty, gt-rthy, occ sd, non calc, qtz gr, occ cmt, arg

SHYSS: lt gy- m gy, fri, f gr, sb rd- rd mod - w srt, arg, SS: clr-lt gy, hd, m- f gr, sb ang-sb rd, mod-w srt, consol, non calc, SLST: gy-dk gy, firm-hd, blk-ly-sb bloky, occ sb blk-ly-sb plty, gt-rthy, occ sd, non calc, qtz gr, occ cmt, arg









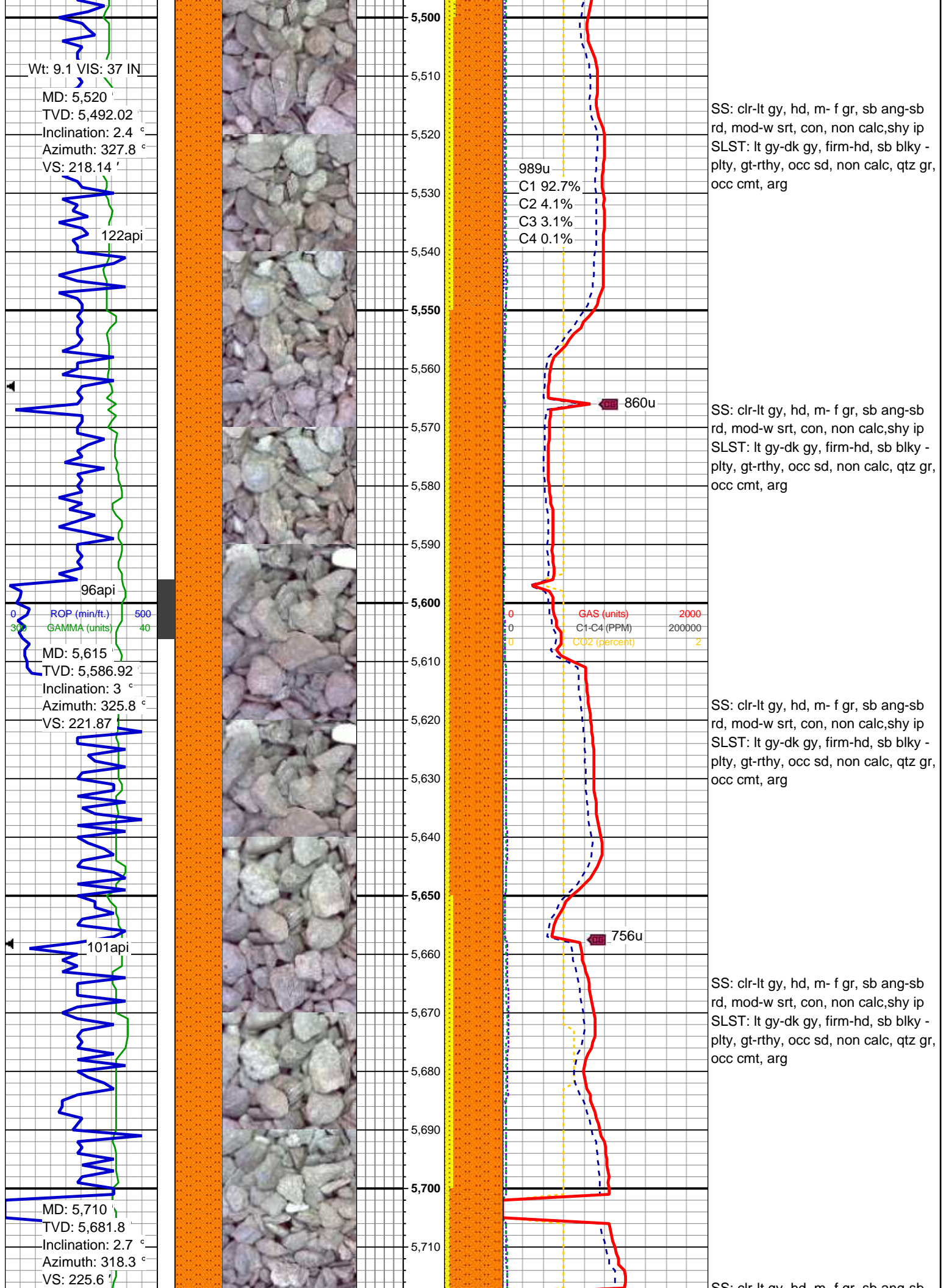
consol, non calc, SLST: gy-dk gy, firm-hd, blk-y-sb bloky, occ sb blk-y-sb plty, gt-rthy, occ sd, non calc, qtz gr, occ cmt, arg

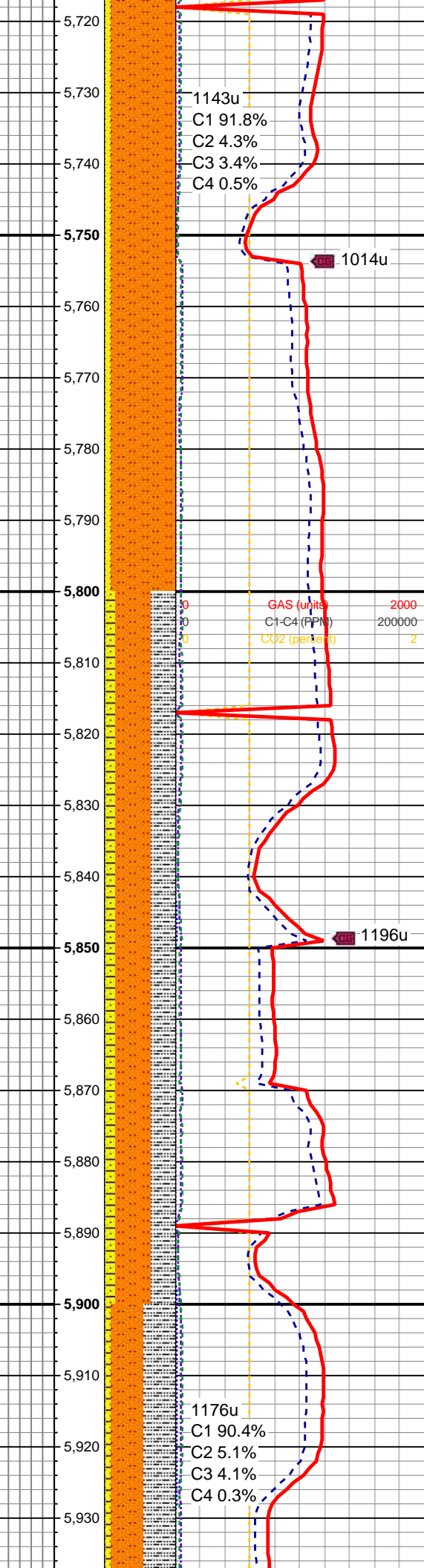
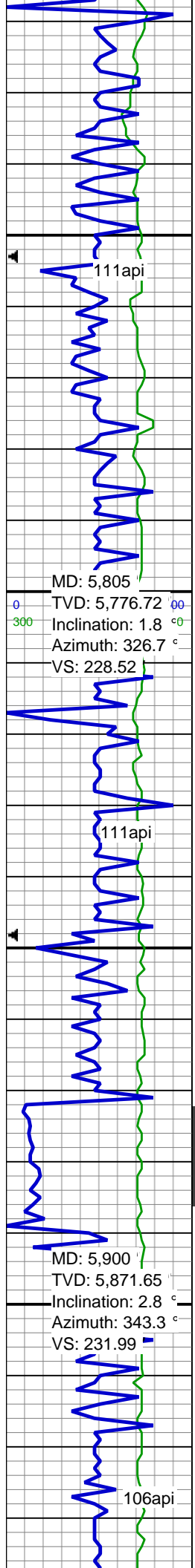
SS: clr-lt gy, hd, m- f gr, sb ang-sb rd, mod-w srt, con, non calc, shy ip
SLST: lt gy-dk gy, firm-hd, sb blk-y-sb plty, occ sb blk-y-sb plty, gt-rthy, occ sd, non calc, qtz gr, occ cmt, arg

SS: clr-lt gy, hd, m- f gr, sb ang-sb rd, mod-w srt, con, non calc, shy ip
SLST: lt gy-dk gy, firm-hd, sb blk-y-sb plty, gt-rthy, occ sd, non calc, qtz gr, occ cmt, arg

SS: clr-lt gy, hd, m- f gr, sb ang-sb rd, mod-w srt, con, non calc, shy ip
SLST: lt gy-dk gy, firm-hd, sb blk-y-sb plty, gt-rthy, occ sd, non calc, qtz gr, occ cmt, arg

SS: clr-lt gy, hd, m- f gr, sb ang-sb rd, mod-w srt, con, non calc, shy ip
SLST: lt gy-dk gy, firm-hd, sb blk-y-sb plty, gt-rthy, occ sd, non calc, qtz gr, occ cmt, arg





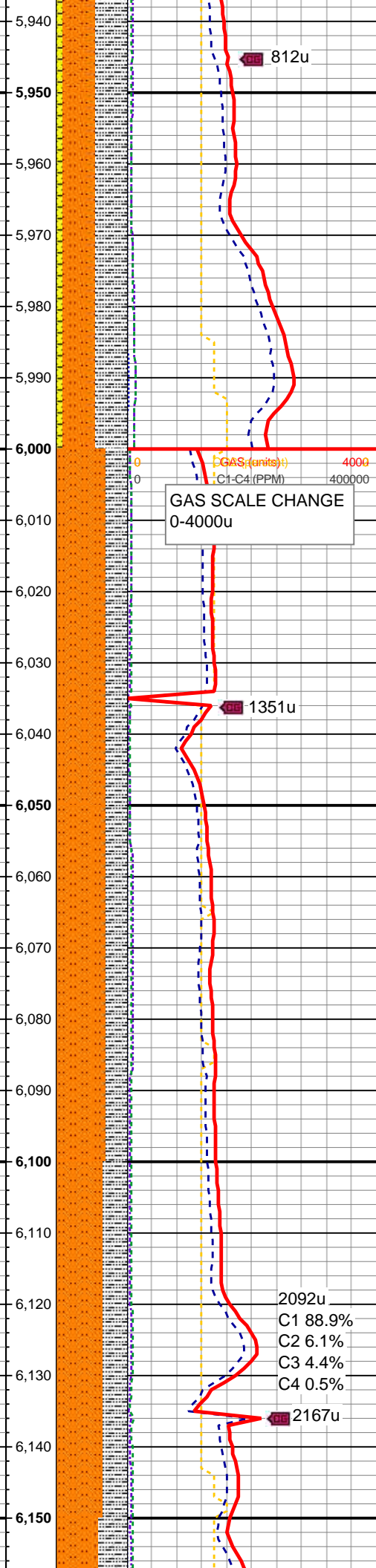
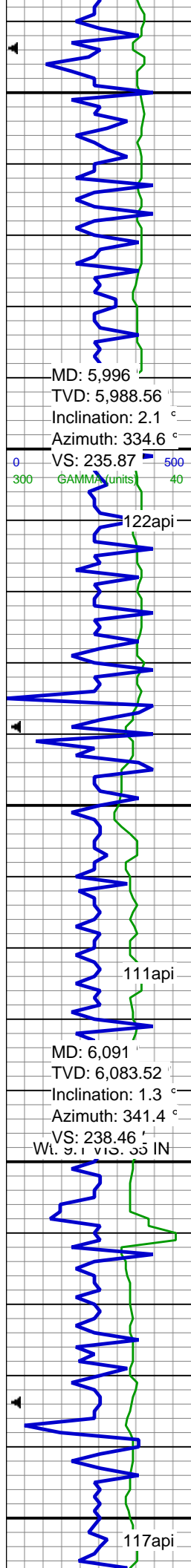
SS: cl-lt gy, hd, m- f gr, sb ang-sb rd, mod-w srt, con, non calc,shy ip
SLST: lt gy-dk gy, firm-hd, sb blkly - plty, gt-rthy, occ sd, non calc, qtz gr, occ cmt, arg

SS: cl-lt gy, hd, m- f gr, sb ang-sb rd, mod-w srt, con, non calc,shy ip
SLST: lt gy-dk gy, firm-hd, sb blkly - plty, gt-rthy, occ sd, non calc, qtz gr, occ cmt, arg

SLTYSH: m gy-m gy brn, mod fri-sl britt, sb blkly-sb plty, gt-rthy, silty, grdg - SH, SLST: lt gy-dk gy, firm-hd, sb blkly - plty, gt-rthy, occ sd, non calc, qtz gr, occ cmt, arg, grdg to sh, SHYSS: lt gy- m gy, fri, f gr, sb rd- rd, mod - w srt, arg, str ss

SLTYSH: m gy-m gy brn, mod fri-sl britt, sb blkly-sb plty, gt-rthy, silty, grdg - SH, SLST: lt gy-dk gy, firm-hd, sb blkly - plty, gt-rthy, occ sd, non calc, qtz gr, occ cmt, arg, grdg to sh, SHYSS: lt gy- m gy, fri, f gr, sb rd- rd, mod - w srt, arg, str ss

SLTYSH: m gy-m gy brn, mod fri-sl britt, sb blkly-sb plty, gt-rthy, silty, grdg - SH, SLST: lt gy-dk gy, firm-hd, sb blkly - plty, gt-rthy, occ sd, non calc, qtz gr, occ cmt, arg, grdg to sh, SHYSS: lt gy- m gy, fri, f gr, sb rd- rd, mod - w srt, arg, str ss

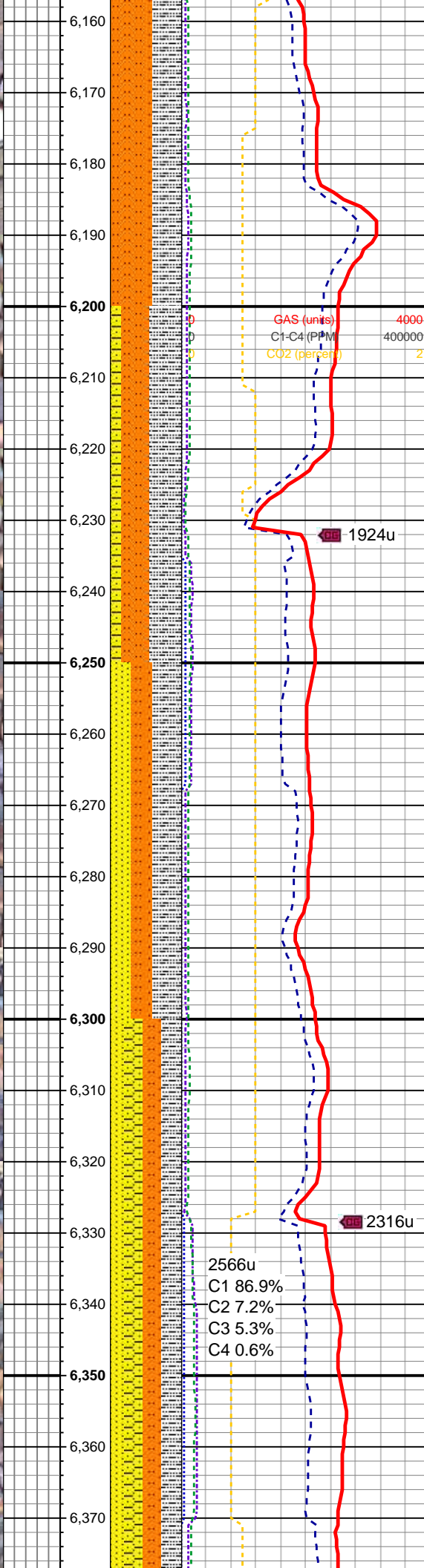
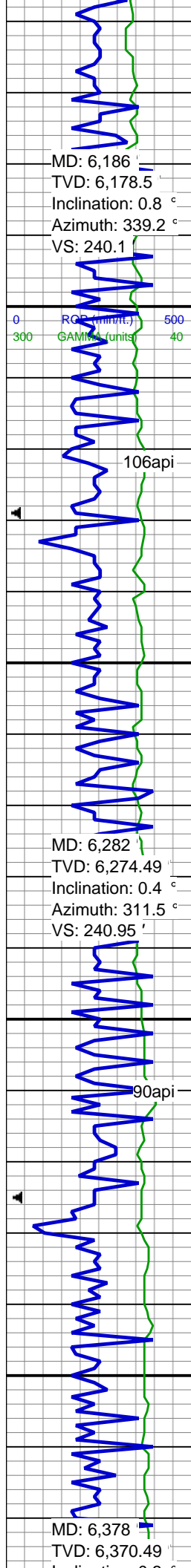


SLTYSH: m gy-m gy brn, mod fri-sl
britt, sb blkly-sb plty, gt-rthy, silty,
grdg - SH, SLST: lt gy-dk gy,
firm-hd, sb blkly - plty, gt-rthy, occ
sd, non calc, qtz gr, occ cmt, arg,
grdg to sh, SHYSS: lt gy- m gy, fri, f
gr, sb rd- rd, mod - w srt, arg, str ss

SLTYSH: m gy-m gy brn, mod fri-sl
britt, sb blkly-sb plty, gt-rthy, silty,
grdg - SH, SLST: lt gy-dk gy,
firm-hd, sb blkly - plty, gt-rthy, occ
sd, non calc, qtz gr, occ cmt, arg,
grdg to sh, str ss

SLTYSH: m gy-m gy brn, mod fri-sl
britt, sb blkly-sb plty, gt-rthy, silty,
grdg - SH, SLST: lt gy-dk gy,
firm-hd, sb blkly - plty, gt-rthy, occ
sd, non calc, qtz gr, occ cmt, arg,
grdg to sh, str ss

SLTYSH: m gy-m gy brn, mod fri-sl
britt, sb blkly-sb plty, gt-rthy, silty,
grdg - SH, SLST: lt gy-dk gy,
firm-hd, sb blkly - plty, gt-rthy, occ
sd, non calc, qtz gr, occ cmt, arg,
grdg to sh, str ss



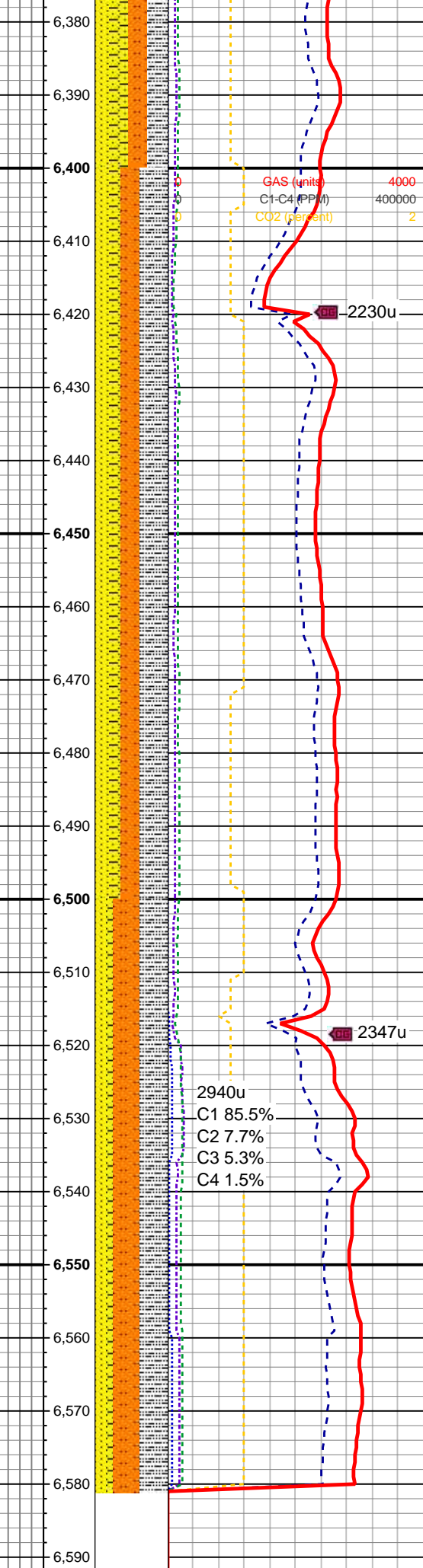
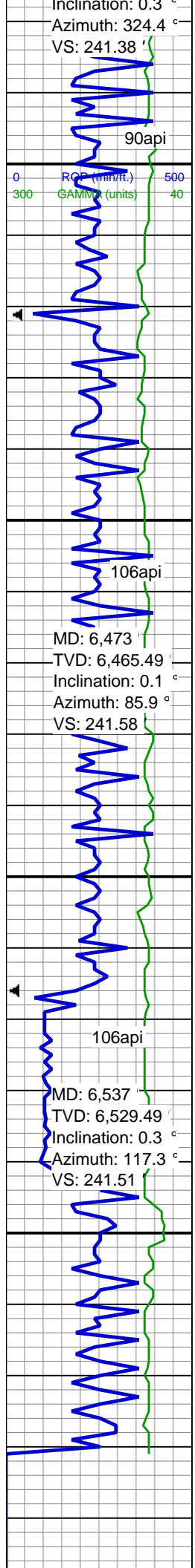
SLTYSH: m gy-m gy brn, mod fri-sl
britt, sb blkly-sb plty, gt-rthy, silty,
grdg - SH, SLST: lt gy-dk gy,
firm-hd, sb blkly - plty, gt-rthy, occ
sd, non calc, qtz gr, occ cmt, arg,
grdg to sh, str ss

SLTYSH: m gy-m gy brn, mod fri-sl
britt, sb blkly-sb plty, gt-rthy, silty,
grdg - SH, SLST: lt gy-dk gy,
firm-hd, sb blkly - plty, gt-rthy, occ
sd, non calc, qtz gr, occ cmt, arg,
grdg to sh, SHYSS: lt gy- m gy, fri, f
gr, sb rd- rd, mod - w srt, arg, str ss

SLTYSH: m gy-m gy brn, mod fri-sl
britt, sb blkly-sb plty, gt-rthy, silty,
grdg - SH, SLST: lt gy-dk gy,
firm-hd, sb blkly - plty, gt-rthy, occ
sd, non calc, qtz gr, occ cmt, arg,
grdg to sh, SS: clr-lt gy, hd, m- f gr,
sb ang-sb rd, mod-w srt, con, non
calc, shy ip, occ shy ss

SLTYSH: m gy-m gy brn, mod fri-sl
britt, sb blkly-sb plty, gt-rthy, silty,
grdg - SH, SLST: lt gy-dk gy,
firm-hd, sb blkly - plty, gt-rthy, occ
sd, non calc, qtz gr, occ cmt, arg,
grdg to sh, SS: clr-lt gy, hd, m- f gr,
sb ang-sb rd, mod-w srt, con, non
calc, shy ip, SHYSS: lt gy- m gy, fri, f
gr, sb rd- rd, mod - w srt, arg

SLTYSH: m gy-m gy brn, mod fri-sl
britt, sb blkly-sb plty, gt-rthy, silty,
grdg - SH, SLST: lt gy-dk gy,
firm-hd, sb blkly - plty, gt-rthy, occ
sd, non calc, qtz gr, occ cmt, arg,
grdg to sh, SS: clr-lt gy, hd, m- f gr,
sb ang-sb rd, mod-w srt, con, non
calc, shy ip, SHYSS: lt gy- m gy, fri, f
gr, sb rd- rd, mod - w srt, arg



grdg to sh, SS: clr-lt gy, hd, m- f gr, sb ang-sb rd, mod-w srt, con, non calc, shy ip, SHYSS: lt gy- m gy, fri, f gr, sb rd- rd, mod - w srt, arg

SLTYSH: m gy-m gy brn, mod fri-sl britt, sb blk- sb plty, gt-rthy, silty, grdg - SH, SLST: lt gy-dk gy, firm-hd, sb blk- plty, gt-rthy, occ sd, non calc, qtz gr, occ cmt, arg, grdg to sh, SS: clr-lt gy, hd, m- f gr, sb ang-sb rd, mod-w srt, con, non calc, shy ip, SHYSS: lt gy- m gy, fri, f gr, sb rd- rd, mod - w srt, arg

SLTYSH: m gy-m gy brn, mod fri-sl britt, sb blk- sb plty, gt-rthy, silty, grdg - SH, SLST: lt gy-dk gy, firm-hd, sb blk- plty, gt-rthy, occ sd, non calc, qtz gr, occ cmt, arg, grdg to sh, SS: clr-lt gy, hd, m- f gr, sb ang-sb rd, mod-w srt, con, non calc, shy ip, SHYSS: lt gy- m gy, fri, f gr, sb rd- rd, mod - w srt, arg

SLTYSH: m gy-m gy brn, mod fri-sl britt, sb blk- sb plty, gt-rthy, silty, grdg - SH, SLST: lt gy-dk gy, firm-hd, sb blk- plty, gt-rthy, occ sd, non calc, qtz gr, occ cmt, arg, grdg to sh, SS: clr-lt gy, hd, m- f gr, sb ang-sb rd, mod-w srt, con, non calc, shy ip, SHYSS: lt gy- m gy, fri, f gr, sb rd- rd, mod - w srt, arg

SLTYSH: m gy-m gy brn, mod fri-sl britt, sb blk- sb plty, gt-rthy, silty, grdg - SH, SLST: lt gy-dk gy, firm-hd, sb blk- plty, gt-rthy, occ sd, non calc, qtz gr, occ cmt, arg, grdg to sh, SS: clr-lt gy, hd, m- f gr, sb ang-sb rd, mod-w srt, con, non calc, shy ip, SHYSS: lt gy- m gy, fri, f gr, sb rd- rd, mod - w srt, arg

Log continues on Merritt
6-66-9-0560CH HZ

