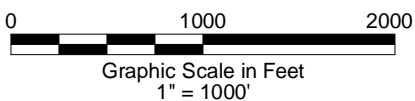
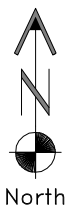
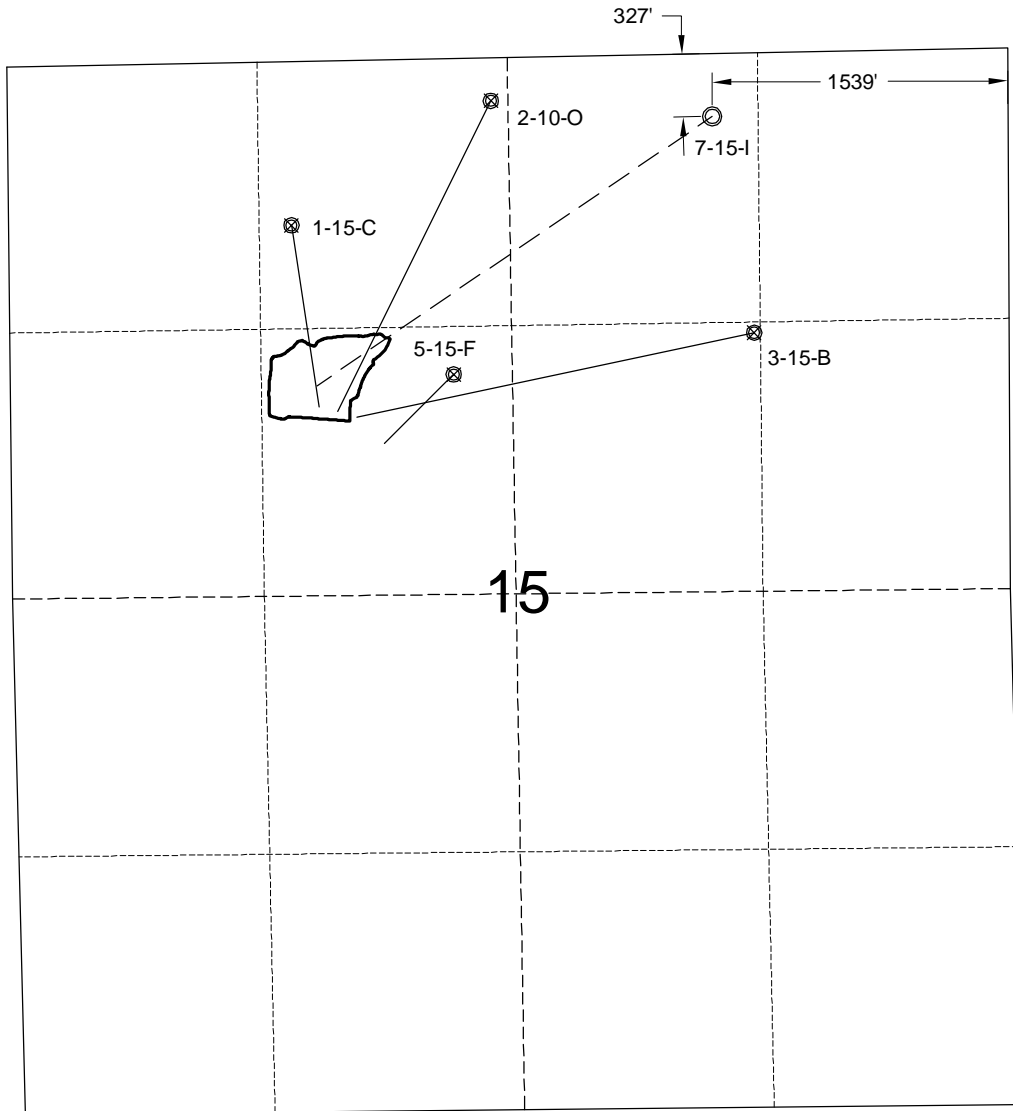


MULTI-WELL PLAN



----- Proposed Directional
 ----- Existing Directional

○ Planned Bottom
 Hole Location
 ⊗ Existing Bottom
 Hole Location

2/13/14

GEO SURV

LAND SURVEYING AND MAPPING
 LAFAYETTE - WINTER PARK
 Ph 303 666 0379 Fx 303 665 6320

OXY PERMIAN
SMU 7-15-I PAD

SE1/4 NW1/4 SECTION 15 T27S R70W
6th PM HUERFANO COUNTY COLORADO